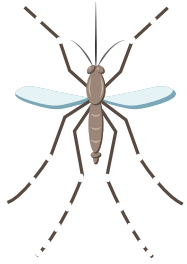


O le a lea fiva?

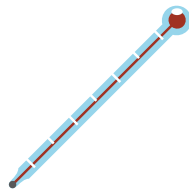
Dengue ale fa'ama'i e feavea'i e le namu pea utia e le namu e igoa o le aedes.



Dengue e le pipisi mai le tasi tagata i le isi.

Symptoms include:

- Maualuga le fiva
- Tiga tele le ulu
- Tiga le tino atoa ma so'oga o ivi



- Pua'i
- Tiga mata
- Mageso

Fa'afeso'ota'i lau foma'i pea maua oe i fa'alloga e pei ona ta'ua i luga.

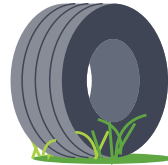


Puipui oe ma lou aiga mai le Dengue fiva

E leai se togafiti. E na'o na puipuia oe mai le.

Taofia le fa'ateleina o namu:

- Aveese, fa'afou, pe sasa'a uma mea e ono to'a ai suavai pei o: atigi apa, atigi fagu, pakete, pa'u ta'avale ua le toe fa'aaogaina, ipu tu'u teu, alavai, oga ofe ma tagutugutu o la'au, va o puipui, gutu paipa o pa e leo tapunia, ta'avale e le'o toe fa'aaogaina, ma va'a.



- Siaki uma faitoto'a valavala ma fa'amalama ma fa'afou ni mea e tatau ona fa'aleleia.
- Fa'agaogao ma fa'amama ipu 'ai ma mea e tu'u ai vai mo fagafao i vaiaso ta'i tasi.



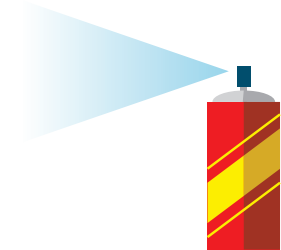
- Fa'agaogao ma fa'amama vase tu'u teu i vaiaso ta'itasi.



- Fefiloi le 4-6 aunese o le moli fufulu ipu ma le kalone vai, ona fana ai lea o ogaeleele o lo'o fanafanau ai namu pei o vai tu lota e tu'u ai i'a, loto taele ua le'o toe fa'aaogaina.



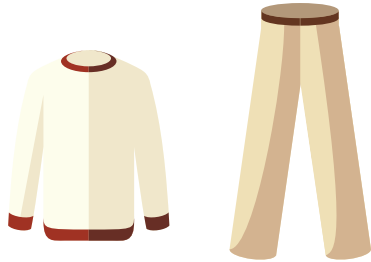
- la mautinoa lelei, o tane o lo'o tuu ai vai e le'o saofia e namu.



- Fa'aaoga vaila'a ua fa'atonuina e tãpē ai namu lapopo'a ma meaola felele i totonu o fale.

Puipuia oe:

- Fa'aaoga vaila'au tuli namu e maua ai le "DEET" (N,N-diethylmeta-toluamide) mo vaega o lou tino o lo'o fa'asausau. Mo ni fa'amatalaga au iliili e uiga i le "DEET," fesili i le fale talavai pe feso'ota'i ane i le website.



- Fa'aaoga laei e puipuia ai oe mai namu pei o, ofu lima uumi, ofu vae uumi, totigi ma se'evae, aemaise lava le taeao ae le'i malamalama, ma le afiafi ae le'i pogisa. O le taimi tonu lena o le titio ma le taufe'a'ai o namu.



- Tapuni faitoto'a ma fa'amalama e le'o puipuia i ni uaea valavala.

Manatua, atonu e le tiga le u a le namu, ae mafai ona matua'i e ma'i al lava.

Mo ni fesili, vala'au lau foma'i po'o le Ofisa o le Soifua Maloloina e pei o:

- On the Big Island: 808-974-6001 or 808-322-4880
- On Oahu: 808-586-8021
- On Maui, Lanai, and Molokai: 808-873-3560
- On Kauai: 808-241-3306

health.hawaii.gov

Equal Rights

We provide access to our activities without regard to race, color, national origin (including language), age, sex, religion, or disability. Write or call the programs on the brochure or our departmental Affirmative Action Officer at 808-586-4616 within 180 days of a problem.

David Y. Ige

Governor of Hawai'i

Virginia Pressler, M.D.

Director of Health



HAWAII STATE
DEPARTMENT
OF HEALTH

Rev. 4/2016

PROTECT YOURSELF FROM

**DENGUE
FEVER**



**SAMOAN
LANGUAGE VERSION**