

***Fuel Tank Advisory Committee:  
June 6, 2023***





# Navy Region Hawaii Agenda

- Closure Plan
  - Timeline and Status
  - Red Hill Tank Closure four Phases
  - Beneficial Non-Fuel Reuse (Nakupuna)
- Remediation
  - Long-Term Monitoring
  - Remediation Action Schedule
  - Groundwater Monitoring Wells



# Red Hill Tank Closure Plan Timeline and Status

- **Navy responsible for executing the Red Hill Tank Closure Plan (01 Nov 2022)**
  - Iterative Plan
  - Outlined 4 options for Closure
    - Close in place
    - Close in place for potential beneficial non-fuel reuse
    - Close and fill
    - Close, remove the steel liner, and fill
- **Navy formally request DOH approval for Closure in Place ( ~ 3 years)**
  - Supported by Alternatives Analysis (Jacobs' report)
  - Most limited impact to environment and surrounding community; safest
  - Other options (Close and fill; Close, remove liner, and fill) very difficult due to Red Hill's size
- **Four (4) Phases of the Red Hill Tank Closure Plan**
  - Phase 1: Planning for permanent tank closure (includes 4 surge tanks; associated piping)
  - Phase 2: Planning for beneficial non-fuel reuse per DOH request
    - Nakupuna Companies awarded a contract to help solicit public input.
    - Other two (2) efforts: UH Alternative Energy Study and NDAA
  - Phases 3 & 4: Preparation and Implementation of Permanent Tank Closure will start after defueling is completed
- **Supplement 1 (28 Feb 2023)**
  - Focus on first major milestone of "Cleaning", including HAZMAT management and Spill Plan
  - Requesting DOH concurrence by end of June 2023 to start cleaning contract process.
- **Supplement 2 (31 May 2023)**
  - Provides amplifying information on Closure in Place, Structural Analysis, & responses to EPA comments
- **Next Steps**
  - Aligning future Supplements to each major milestone



# RED HILL TANK CLOSURE

The DON will be regularly releasing information as the timeline progresses via the following:

- Press Releases
- Website Updates
- Virtual/Online Updates
- Neighborhood Boards



## PLANNING FOR PERMANENT TANK CLOSURE

- Submit Red Hill Tank Closure Plan to Hawaii Department of Health (DOH) and the Environmental Protection Agency (EPA).
- DOH & EPA concurrence on permanent tank closure methods and procedures.



## PLANNING FOR BENEFICIAL NON-FUEL REUSE OF TANKS

- Collaborate with DOH, EPA, local leaders, and general public.
- Identify, evaluate, and discuss beneficial non-fuel reuse options.



## PREPARATION FOR TANK CLOSURE

- Begin closure process upon completion of defueling.
- Ventilate the 20 underground storage tanks to allow worker access.
- Complete repairs required for safe closure.
- DOH concurrence on repair completion and spill prevention.



## IMPLEMENTATION OF PERMANENT TANK CLOSURE

- Clean the 20 underground storage tanks, surge tanks, and associated piping.
- Address tank security, electrical power, and access for long term maintenance and environmental monitoring.
- Render the tanks unusable for fuel storage.



## SITE ASSESSMENT, RELEASE INVESTIGATION & RESPONSE

Concurrent throughout phases 1 - 4.

- Perform site assessment as part of permanent closure.
- Continue to investigate and remediate impacted groundwater.

## DEFUELING

Concurrent planning and preparation to defueling effort.

- Contingent on final defueling completion.

For more information, please see Navy's public website for Red Hill



CNRH Red Hill Website:



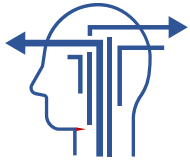
Contact us:

[cnrh.pao@us.navy.mil](mailto:cnrh.pao@us.navy.mil)

<https://cnrh.cnrc.navy.mil/Operations-and-Management/Red-Hill/>



# Interviews: 3 Apr to 31 May 2023



**What is your opinion of the potential repurposing of the Red Hill Facility after the tanks are defueled and closed?**

- Focus should be defueling, not repurposing
- Facility must be permanently disabled
- Only possible if safe for aquifer
- Need community discussion first



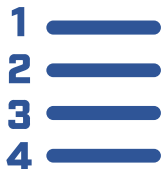
**Which idea would be the best for the people of Hawaii?**

- Return to nature
- Anything safe for environment
- Water storage
- Reduce dependence on imports
- Energy use



**What ideas if any would you suggest for repurposing the facility after it is closed?**

- Must safely serve community needs
- Return to State/Native Hawaiians/nature
- Energy (solar, hydroelectric, gravity-fed)
- Storage (water, emergency supplies, etc.)
- Agricultural use (vertical farming)
- Emergency shelter
- Museum/attraction/educational
- Landfill for dry non-HAZMAT waste



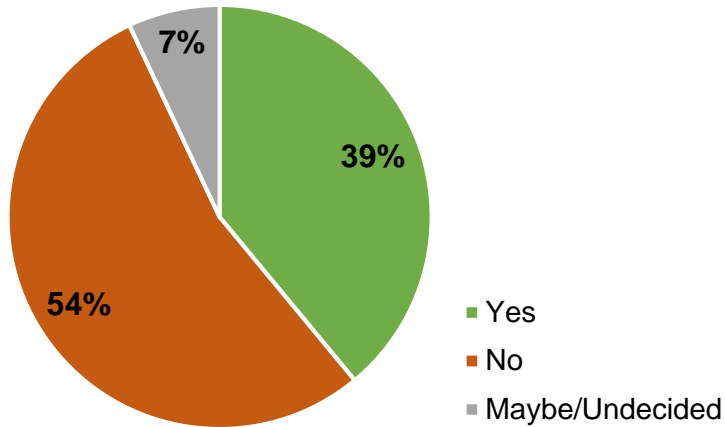
**Do you have a preference for either of the four categories?**

- DoD: Least popular
- Non-DoD: Most popular
- Energy: Mixed response. (Risk to aquifer)
- Non-Energy Most popular

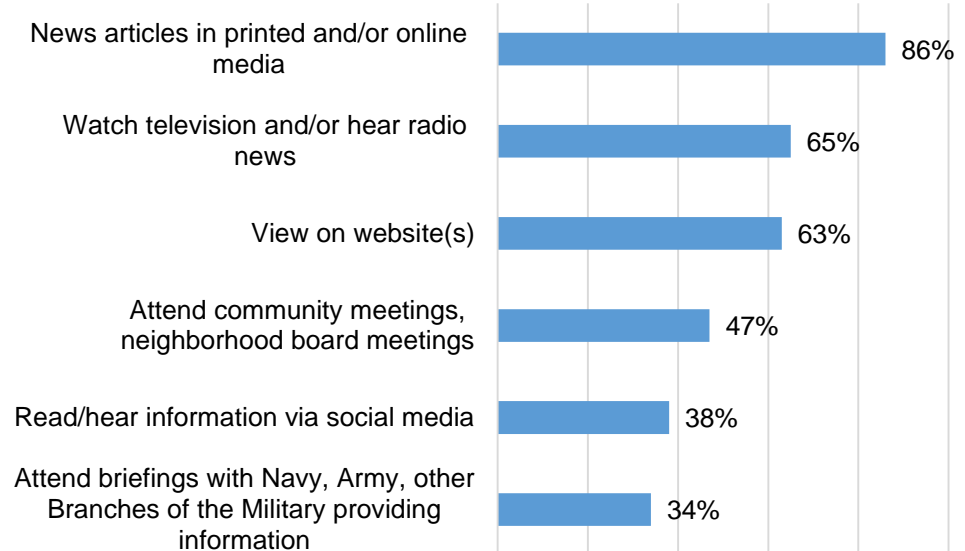


# Qualitative Survey: 31 Mar to 31 May 2023

## Are you in favor of the Red Hill Facility being Repurposed?



## How do you prefer to receive information?



## How do you think the Red Hill facility should be utilized after it is closed?:

- Clean it out, restore it to how it was before the tanks were installed
  - Return to the State
  - Return to Native Hawaiians
- Renewable energy resource
- Museum/attraction - engineering marvel
- Store water – potable or non-potable
- Storage for emergency supplies such as food, blankets, tents, etc.
- Other: homeless shelter, grow mushrooms, use for agriculture, emergency shelter
- Tell me what the options are – cost/benefit
- Military should find a safe non-fuel use



# Navy Region Hawaii Agenda

- Closure Plan
  - Timeline and Status
  - Red Hill Tank Closure four Phases
  - Beneficial Non-Fuel Reuse (Nakupuna)
- Remediation
  - Long-Term Monitoring
  - Remediation Action Schedule
  - Groundwater Monitoring Wells



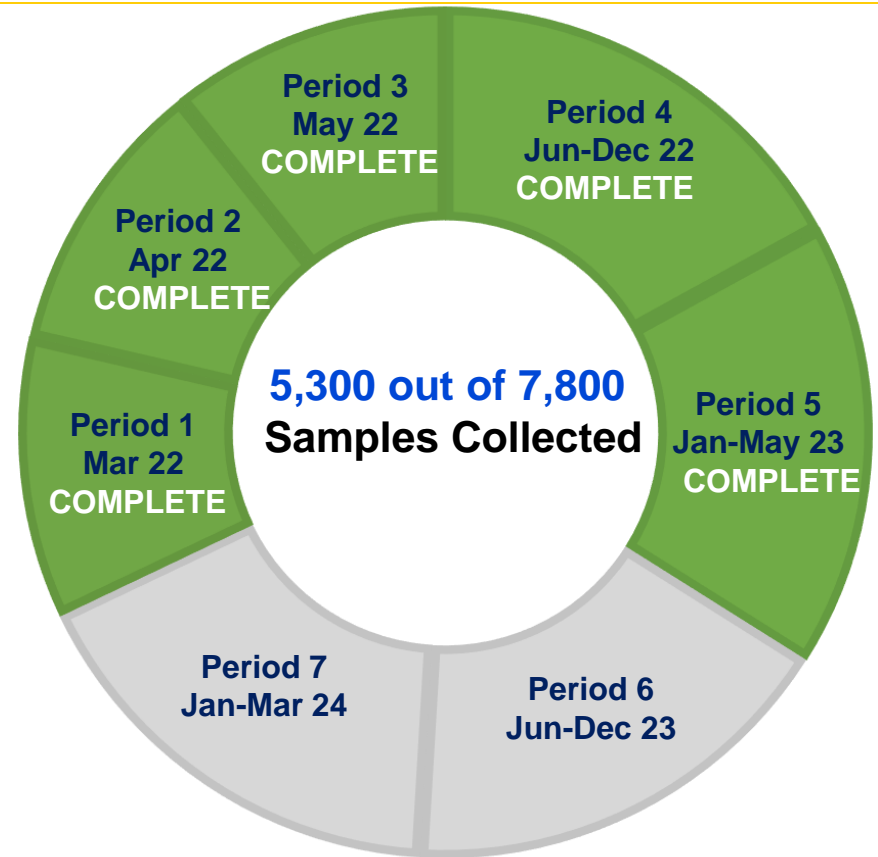
# JBPHH Water Distribution System Long-Term Monitoring

## Priority locations Sampled Each Period:

- Schools
- CDC's
- CDH's
- Medical/Dental Offices
- Distribution System

## Drinking Water Distribution Sampling:

- sampling continues until Mar 2024
- 65%+ of homes and non-residential buildings sampled
- Zero detections of JP5



### Rapid Response Team

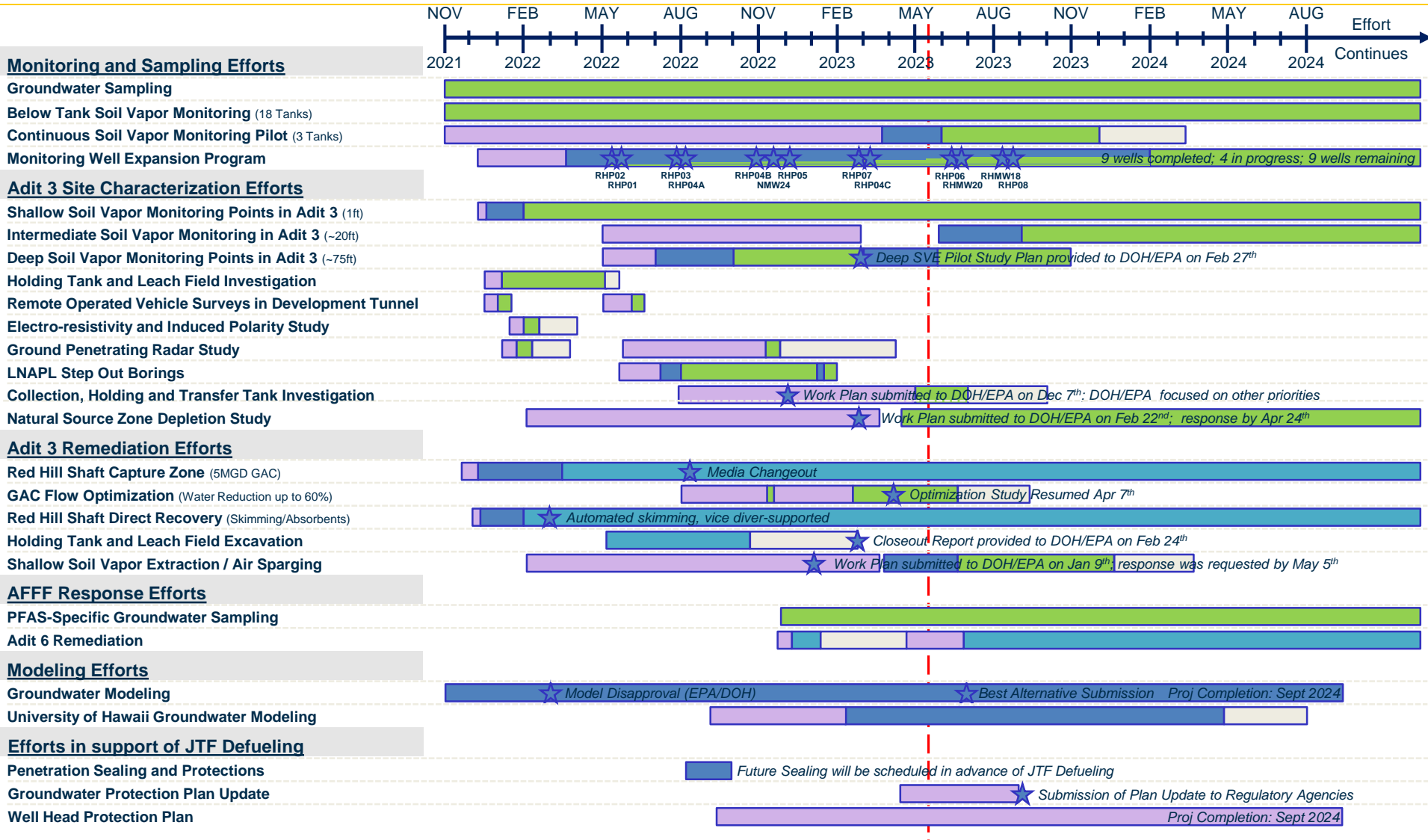
The Rapid Response team is available to contact if residents have a concern to perform a house flush and test for TPH. Residents can contact the Water Response Team at (808) 920-3616





# Red Hill Remediation Actions Schedule

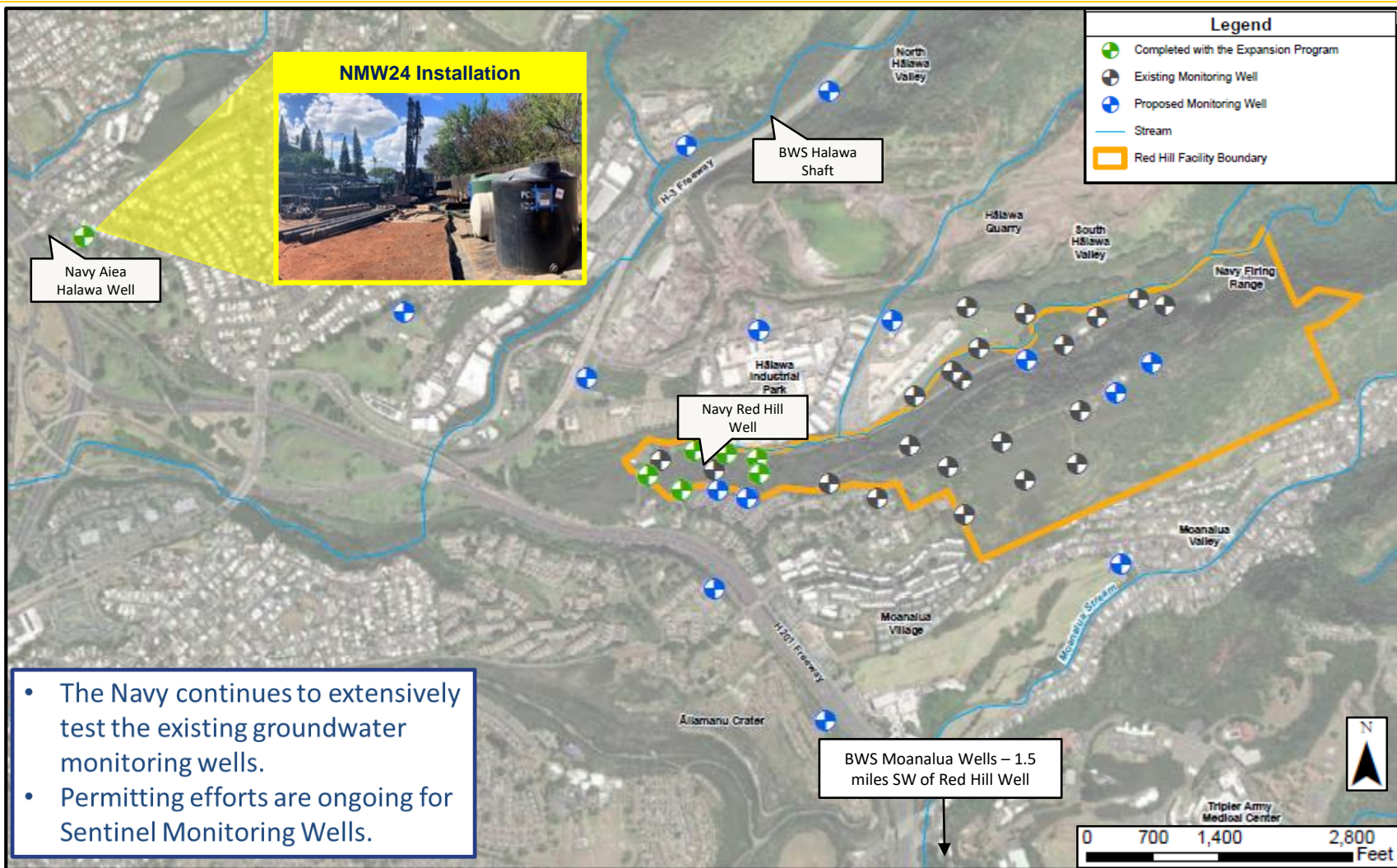
Planning Phase
Installation Phase
Monitoring Phase
Remediation Phase
Closeout / Report Phase



\*\* Subject to change – dependent on predecessor activity progress, environmental permitting, real estate agreements and negotiations, resource availabilities, and prior activity data interpretation.



# Groundwater Monitoring Wells and Well Network Expansion



- The Navy continues to extensively test the existing groundwater monitoring wells.
- Permitting efforts are ongoing for Sentinel Monitoring Wells.