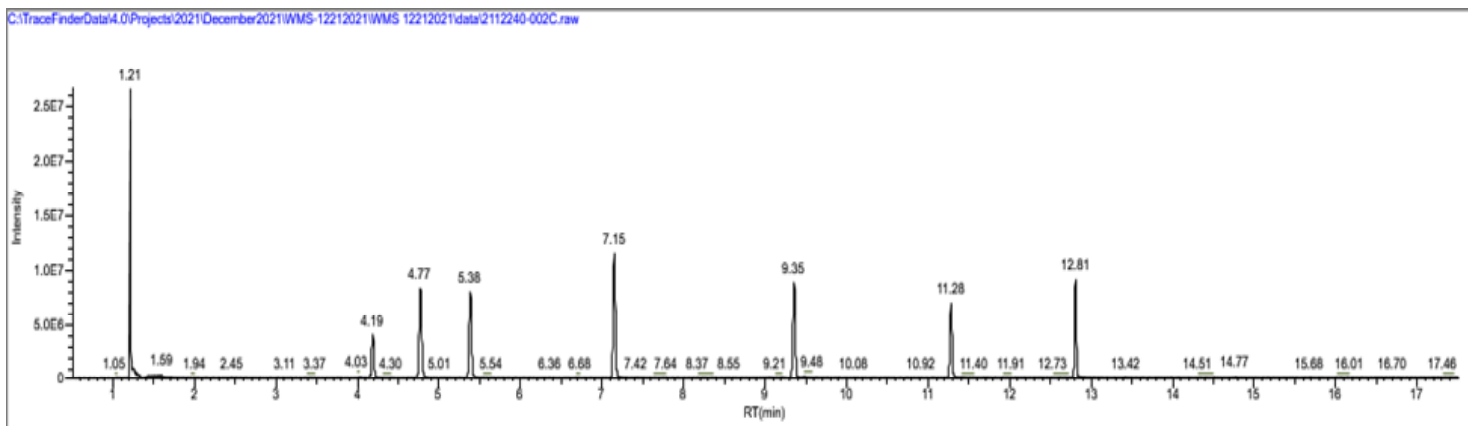


Batch Folder Path: C:\TraceFinderData\4.0\Projects\2021\December2021\WMS-12212021\WMS 12212021
Sample ID: 2112240-002C
User Name: BP
Method Name: WMS 12212021_Torrent Lab Method 8260-W_12142021-ICAL
Instrument Name: GCMS-10
Acquisition Date: 12/21/2021 3:43:12 PM
Cal File: C:\TraceFinderData\4.0\Projects\2021\December2021\WMS-12212021\WMS 12212021\Methods\8260B-ICAL-12142021_WMS 12212C



R Time	Name	Type	Conc.	Area	m/z	Conc.Units
4.77	Pentafluorobenzene	internalStandar	11.90	3894048	168	ug/L
5.38	1,4-Difluorobenzene	internalStandar	11.90	6603078	114	ug/L
9.36	Chlorobenzene-d5	internalStandar	11.90	5976499	117	ug/L
12.81	1,4-Dichlorobenzene-d4	internalStandar	11.90	2255141	152	ug/L
R Time	Name	Type	Conc	Total Area	m/z	Units
1.35	Dichlorodifluoromethane	targetCompou	0.00	272	85	ug/L
1.37	Chloromethane	targetCompou	0.01	3933	50	ug/L
1.42	1,3-Butadiene	targetCompou	0.01	2351	54	ug/L
1.41	Vinyl Chloride	targetCompou	0.00	276	62	ug/L
1.57	Bromomethane	targetCompou	0.14	14527	94	ug/L
1.63	Chloroethane	targetCompou	0.00	271	64	ug/L
1.74	Trichlorofluoromethane	targetCompou	0.00	429	101	ug/L
1.87	1,1-Dichloroethene	targetCompou	0.00	138	61	ug/L
2.05	Carbon disulfide	targetCompou	0.01	5573	76	ug/L
2.06	Freon 113	targetCompou	0.00	209	151	ug/L
2.45	Methylene Chloride	targetCompou	0.04	10850	49	ug/L
2.5	Acetone	targetCompou	0.63	17969	43	ug/L
2.59	trans-1,2-Dichloroethene	targetCompou	0.00	330	61	ug/L
2.71	MTBE	targetCompou	0.00	822	73	ug/L

2.79	tert-Butanol	TargetCompou	0.21	1667	59	ug/L
3	Diisopropyl ether (DIPE)	TargetCompou	0.01	4702	45	ug/L
3.11	1,1-Dichloroethane	TargetCompou	0.00	620	63	ug/L
3.42	ETBE	TargetCompou	0.00	103	59	ug/L
3.7	cis-1,2-Dichloroethene	TargetCompou	0.00	231	61	ug/L
3.69	2,2-Dichloropropane	TargetCompou	0.00	531	77	ug/L
4	Bromochloromethane	TargetCompou	0.00	276	49	ug/L
4	Chloroform	TargetCompou	0.00	853	83	ug/L
4.19	(S) Dibromofluoromethane	eSurrogate	15.10	2491731	111	ug/L
4.18	1,1,1-Trichloroethane	TargetCompou	0.00	134	97	ug/L
4.35	1,1-Dichloropropene	TargetCompou	0.01	551	110	ug/L
4.28	2-Butanone	TargetCompou	0.27	3486	43	ug/L
4.61	Benzene	TargetCompou	0.00	2940	78	ug/L
4.77	(S) 1,4-Dichloroethane-d4	eSurrogate	13.94	2323154	65	ug/L
4.78	TAME	TargetCompou	0.01	3670	73	ug/L
4.85	1,2-Dichloroethane	TargetCompou	0.02	4638	62	ug/L
5.32	Trichloroethylene	TargetCompou	0.00	104	132	ug/L
5.82	Dibromomethane	TargetCompou	0.00	138	174	ug/L
6.05	Bromodichloromethane	TargetCompou	0.01	1144	83	ug/L
6.36	1,4-Dioxane	TargetCompou	0.80	716	88	ug/L
6.87	cis-1,3-Dichloropropene	TargetCompou	0.00	602	75	ug/L
7.15	(S) Toluene-d8	eSurrogate	11.55	8942964	98	ug/L
7.21	Toluene	TargetCompou	0.01	4578	91	ug/L
7.76	Tetrachloroethylene	TargetCompou	0.00	663	166	ug/L
7.79	4-Methyl-2-Pentanone	TargetCompou	0.02	2232	43	ug/L
7.83	trans-1,3-Dichloropropene	TargetCompou	0.00	579	75	ug/L
8.04	1,1,2-Trichloroethane	TargetCompou	0.00	402	83	ug/L
8.27	Dibromochloromethane	TargetCompou	0.00	418	129	ug/L
8.54	1,3-Dichloropropane	TargetCompou	0.00	250	76	ug/L
8.57	1,2-Dibromoethane	TargetCompou	0.00	169	107	ug/L
9.07	2-Hexanone	TargetCompou	0.50	19675	43	ug/L
9.36	Chlorobenzene	TargetCompou	0.00	725	112	ug/L
9.49	Ethyl Benzene	TargetCompou	0.00	904	91	ug/L
9.52	1,1,1,2-Tetrachloroethane	TargetCompou	0.01	731	133	ug/L
9.74	m,p-Xylene	TargetCompou	0.00	807	91	ug/L
10.36	o-Xylene	TargetCompou	0.00	765	91	ug/L
10.23	Bromoform	TargetCompou	0.00	72	173	ug/L
10.5	Styrene	TargetCompou	0.29	2903	104	ug/L
10.92	Isopropyl Benzene	TargetCompou	0.26	986	105	ug/L
11.28	(S) 4-Bromofluorobenzene	eSurrogate	12.25	2801649	95	ug/L
11.37	Bromobenzene	TargetCompou	0.00	566	77	ug/L
11.54	n-Propylbenzene	TargetCompou	0.00	956	91	ug/L
11.68	1,1,2,2-Tetrachloroethane	TargetCompou	0.00	388	83	ug/L
11.69	2-Chlorotoluene	TargetCompou	0.00	1017	91	ug/L
11.82	1,2,3-Trichloropropane	TargetCompou	0.01	875	75	ug/L
11.85	1,3,5-Trimethylbenzene	TargetCompou	0.28	1370	105	ug/L

Flag legend: LOD<J<LOQ; I=Ion ratio failure; C=Carryover; ?=Linearity limit; D=Detection limit; Q=Quan limit; POS=Rpt limit; b=Blank; s=Solvent blank; est=Estimated; Bordered Cell=Manually integrated.

12.06	4-Chlorotoluene	TargetCompou	0.00	1550	91	ug/L
12.26	tert-Butylbenzene	TargetCompou	0.22	450	119	ug/L
12.39	1,2,4-Trimethylbenzene	TargetCompou	0.28	1871	105	ug/L
12.5	sec-Butyl Benzene	TargetCompou	0.00	885	105	ug/L
12.71	1,3-Dichlorobenzene	TargetCompou	0.00	938	146	ug/L
12.7	p-Isopropyltoluene	TargetCompou	0.28	918	119	ug/L
12.8	1,4-Dichlorobenzene	TargetCompou	0.01	1352	146	ug/L
13.26	n-Butylbenzene	TargetCompou	0.26	2228	91	ug/L
13.32	Hexachloroethane	TargetCompou	0.01	352	166	ug/L
13.33	1,2-Dichlorobenzene	TargetCompou	0.00	150	146	ug/L
14.32	1,2-Dibromo-3-Chloropropane	TargetCompou	0.04	842	75	ug/L
15.08	1,2,4-Trichlorobenzene	TargetCompou	0.01	916	180	ug/L
15.11	Hexachlorobutadiene	TargetCompou	0.01	640	225	ug/L
15.46	Naphthalene	TargetCompou	0.01	2717	128	ug/L
15.65	1,2,3-Trichlorobenzene	TargetCompou	0.02	1556	180	ug/L
N/F	Carbon Tetrachloride	TargetCompou	0.00	N/F	119	ug/L
N/F	1,2-Dichloropropane	TargetCompou	0.00	N/F	63	ug/L

Flag legend: LOD<J<LOQ; I=Ion ratio failure; C=Carryover; ?=Linearity limit; D=Detection limit; Q=Quan limit; POS=Rpt limit; b=Blank; s=Solvent blank; est=Estimated; Bordered Cell=Manually integrated.

021.cal