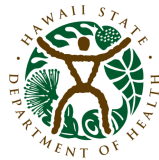


2019 Hawai‘i State Epidemiologic Profile

Selected Youth and Adult Alcohol and Drug Indicators

7th Edition

Published Date: December 18, 2020. Modified Date: January 15, 2021



Contents

Authorship	2
Acknowledgements	3
Profile Background	4
BRFSS Analysis	5
Table 1. 30-day current drinking by county, sex, and race for years 2011-2017	5
Table 2. 30-day current drinking by county, sex, and race for years 2011-2017 (age-adjusted)	5
Table 3. 30-day binge drinking by county, sex, and race in 2011-2017	6
Table 4. 30-day binge drinking by county, sex, and race in 2011-2017 (age-adjusted)	6
Table 5. Prescription drug overuse by county, sex, and race in 2015-2017	7
Table 6. Prescription drug overuse by county, sex, and race in 2015-2017 (age-adjusted)	8
Table 7. Frequency in the past 30 days of driving after having too much to drink (age 18 and older) in 2012, 2014, and 2016	8
Table 8. Frequency in the past 30 days of driving after having too much to drink (age 18 and older) in 2012, 2014, and 2016 (age-adjusted)	9
Table 9. Current number of prescription drugs used in 2015-2017	9
Table 10. Current number of prescription drugs used in 2015-2017 (age-adjusted)	9
YRBS Analysis	10
Table 11. Ever drank alcohol among public high school students by county, sex, grade, and race for years 2011-2017	10
Table 12. Current alcohol use among public high school students by county, sex, grade, and race for years 2011-2017	11
Table 13. Current binge drinking among public high school students by county, sex, grade, and race for years 2011-2015	12
Table 14. Consumed alcohol before age 13 among public high school students by county, sex, grade, and race for years 2011-2017	13
Table 15. Ridden in a car with someone, including self, who was high or had been using alcohol or drugs in the past 30 days among public high school students by county, sex, grade, and race for years 2013-2017	14
Table 16. Current marijuana use among public high school students by county, sex, sexual orientation, grade, and race for years 2011-2017	15
Table 17. Marijuana use before age 13 among public high school students by county, sex, grade, and race for years 2011-2017	16
Table 18. Ever used marijuana among public high school students by county, sex, grade, and race for years 2011-2017	17
Table 19. Ever used cocaine among public high school students by county, sex, grade, and race for years 2011-2017	18
Table 20. Ever used hallucinogenics among public high school students by county, sex, grade, and race for years 2013-2017	19
Table 21. Ever used ecstasy among public high school students by county, sex, grade, and race for years 2011-2017	20
Table 22. Ever used heroin among public high school students by county, sex, grade, and race for years 2013-2017	21
Table 23. Ever used methamphetamines among public high school students by county, sex, grade, and race for years 2011-2017	22
Table 24. Ever used injectables among public high school students by county, sex, sexual orientation, grade, and race for years 2013-2017	23
Table 25. Ever used prescription drugs without a doctor's prescription among public high school students by county, sex, sexual orientation, grade, and race for years 2011-2017	24

Table 26. Ever used inhalants among public high school students by county, sex, grade, and race for years 2011-2015	25
Table 27. Offered, sold, or given drugs on school property in the past year among public high school students by county, sex, grade, and race for years 2011-2015	26
PRAMS Analysis	27
Table 28. Drank alcohol 3 months before pregnancy by age group and race for years 2009-2015	27
Table 29. Drank alcohol during last 3 months of pregnancy by age group and race for years 2009-2015	27
Table 30. Binge drinking 3 months before pregnancy by age group and race for years 2009-2015	28
Table 31. Illicit drug use 1 month before pregnancy by age group and race for years 2009-2015	28
Appendices	28
Appendix A. 2019 Hawai'i State Epidemiologic Profile County Fact Sheet	29
Appendix B. 2019 Hawai'i State Epidemiologic Profile Infographic	36
Appendix C. 2019 Hawai'i County Epidemiologic Profile Infographic	37
Appendix D. 2019 Honolulu County Epidemiologic Profile Infographic	38
Appendix E. 2019 Kaua'i County Epidemiologic Profile Infographic	39
Appendix F. 2019 Maui County Epidemiologic Profile Infographic	40
Appendix G. 2019 Hawai'i State Epidemiologic Profile Chartbook	41

Copyright © University of Hawai'i at Mānoa. 2020. Some Rights Reserved.

Pacific Health Analytics Collaborative
Center on Aging
Myron B. Thompson School of Social Work
University of Hawai'i at Mānoa
1960 East-West Road
Biomed C105
Honolulu, HI 96822
Email: phac+uhseow@hawaii.edu

Suggested citation

Hawai'i State Epidemiologic Outcomes Workgroup (2019). 2019 Hawai'i State Epidemiologic Profile: Selected Youth and Adult Alcohol Indicators. Honolulu, HI.

This report was generated on January 15, 2021 with R version 4.0.2 (2020-06-22).

Authorship

About the Authors

This report was prepared by Bobby Do, Constance Emory, and Victoria Y Fan on behalf of the State Epidemiologic Outcomes Workgroup (SEOW). The University of Hawai'i (UH) Epidemiology Team has been providing epidemiologic services to and working with the ADAD of DOH from 2006 to present as a Substance Abuse and Mental Health Services Administration (SAMHSA): Strategic Prevention Framework Partnerships for Success (SPF-PFS) partner. The SPF-PFS builds upon the accomplishments of the SPF-SIG and Substance Abuse Block Grants. Since 2010, the profiles have been put together and updated by the UH Epidemiology Team with guidance from the SEOW. The UH Epidemiology Team also provides technical assistance and training for state and community level stakeholders and sub-recipients in evidence-based programs, data usage, program evaluation, grant writing, needs assessment, and other identified-training needs. The SEOW is funded by the Behavioral Health Administration, Alcohol and Drug Abuse Division.

Modifications

January 15, 2021: Removed year column 2017 for Table 13 (current binge drinking among public high school students by county, sex, grade, and race) due to change in wording of the survey question.

Acknowledgements

The contents of the *Hawai'i State Epidemiologic Profile: Selected Youth and Adult Alcohol and Drug Indicators* are a collaborative effort on the part of numerous individuals and agencies throughout the State of Hawai'i. It is because of the knowledge and dedication of these entities that [Hawai'i's Strategic Planning Framework – Partnerships for Success \(SPF-PFS\)](#) partners are able to provide the leadership necessary for the development and delivery of quality substance abuse prevention, intervention, and treatment services for youth and adults.

The purpose of Hawai'i's Strategic Planning Framework – Partnership for Success (SPF-PFS) Project is to improve the quality of life for residents of Hawai'i by continuing to implement the five steps of SAMHSA's SPF process. A goal of the SPF process aims to aid in the development of more effective prevention strategies and sustainable prevention infrastructures statewide to reduce and prevent underage drinking. The five steps included in the SPF process are as follows: 1) Assess Needs 2) Build Capacity 3) Plan 4) Implement and 5) Evaluate. These five steps are informed and made relevant by sustainability and cultural competency considerations throughout the project.

The Alcohol and Drug Abuse Division (ADAD) of the Hawai'i State Department of Health (DOH)

ADAD of DOH is a major source of public funds for many substance abuse treatment and prevention services in Hawai'i. This profile would not have been possible without funding and support from ADAD. ADAD is supported by the SPF-PFS 2018 of SAMHSA under grant number Hawaii PFS 2018 - SP081001.

Evaluation Team at Center on the Family (COF) of the University of Hawai'i at Mānoa

The University of Hawai'i, COF has research and evaluation expertise with substance use prevention programs and has collaborated with ADAD. COF was the evaluator for the Strategic Prevention Framework – State Incentive Grant (SPF-SIG) from 2007 to 2012, and continues providing their services for the current project SPF-PFS 2018 as one of our partners. The authors express our gratitude to the Evaluation Team at COF who works collaboratively with the Epidemiology Team and ADAD at DOH.

State Epidemiologic Outcomes Workgroup (SEOW)

SEOW comprises directors, epidemiologists and data managers from the government, community stakeholders, and individuals from educational institutions. The Epidemiology Team appreciates feedback and suggestions from members, which were reflected throughout this profile.

Hawai'i School Health Survey (HSHS), Hawai'i Health Data Warehouse (HHDW), and the Hawai'i PRAMS Program

The HSHS is a joint effort between DOH and the Hawai'i Department of Education (DOE) to monitor the health status and needs of students in 6th through 12th grade. Data for a large portion of this profile have been collected and provided by Hawai'i Youth Risk Behavior Survey (Hawai'i YRBS), which is one of two survey modules (the other one is Youth Tobacco Survey) that are coordinated by HSHS committee members. Based at the University of Hawai'i through a contract with DOH, HHDW analyzes the Hawai'i YRBS and Behavioral Risk Factor Surveillance System (BRFSS) and provides detailed reports of results. The Hawai'i PRAMS Program identifies and monitors maternal attitudes and experiences before, during, and after pregnancy. The program is funded by the Centers for Disease Control and Prevention (CDC), Division of Reproductive Health. This profile would not have been possible without invaluable data and analysis provided by these resources.

Profile Background

ADAD and the University of Hawai'i, Myron B. Thompson School of Social Work, Center on Aging, Epidemiology Team produces an epidemiologic profile titled the "Hawai'i State Epidemiologic Profile for Selected Youth and Adult Alcohol and Drug Use Indicators". The Epidemiology Team is a partner of the Strategic Prevention Framework Partnerships for Success (SPF-PFS), which is funded through the Substance Abuse and Mental Health Services Administration (SAMHSA) Center for Substance Abuse Prevention. The purpose of these profiles is to identify recent rates, patterns, and trends of alcohol or drug use in Hawai'i among youth and adults. These profiles are intended to present information in a user-friendly format for planning and implementation of alcohol and substance use prevention and treatment programs in Hawai'i.

The alcohol and drug indicators in this profile were selected in order to be consistent with previous years' reports, which used SAMHSA's National Outcome Measures (NOMs). The original data sources in this profile are the Behavioral Risk Factor Surveillance System (BRFSS), Hawai'i Youth Risk Behavior Survey (Hawai'i YRBS), and the Pregnancy Risk Assessment Monitoring System (PRAMS).

Original Data Sources

Hawai'i Behavioral Risk Factor Surveillance System (Hawai'i BRFSS)

Description: The BRFSS is coordinated by CDC and it is the largest telephone survey in the world. Data are collected monthly, targeting all 50 states, the District of Columbia, American Samoa, Palau, Puerto Rico, the US Virgin Islands, and Guam. Survey questions include alcohol and marijuana usage, and demographics of age, gender, and ethnicity/race. In addition to landlines, the BRFSS has also started to incorporate cellphone based surveys in 2011. Hawai'i BRFSS is administered by DOH.

Limitations: The BRFSS is self-reported with challenges of under- or over-reporting. Surveys are only distributed to those who are in possession of landlines or cellphones, which may not be representative of the entire population.

Website: <http://health.hawaii.gov/brfss/>

Hawai'i Youth Risk Behavior Survey (Hawai'i YRBS)

Description: The YRBS is a national health survey conducted by the Centers for Disease Control and Prevention (CDC). Data are collected regarding health-risk behaviors among 9th through 12th grade students in the United States (US) including alcohol or other drug use and tobacco use. Hawai'i YRBS is administered by HIDOE in partnership with DOH, and HHDW provides detailed aggregate reports for the state YRBS data.

Limitations: Although quality of the data are demonstrated as acceptable, there might be potential underreporting or over-reporting of behaviors from the participants since data are self-reported and includes sensitive topics such as underage drinking and other substance use. Counties that have a response rate less than 60% are not analyzed, which may lower the representativeness across geographic areas. Other than core questions that are standardized by CDC, comparable national data are not available for some of the indicators in Hawai'i YRBS.

Website: <http://hhdw.org/health-reports-data/data-source/yrbs-reports/>

Pregnancy Risk Assessment Monitoring System (PRAMS)

Description: PRAMS is a project sponsored by the CDC to collect state-specific, population-based data on maternal attitudes and experiences before, during, and after pregnancy. A questionnaire is mailed to approximately 200 new mothers per month on all islands of Hawai'i. Questions were intended to address critical maternal and child health issues. Relevant to this report are their questions about use of alcohol before and during pregnancy.

Limitations: Responses are self-reported. Additionally, the absence of national level statistics and differences in methodology between states makes cross-state comparison difficult.

Website: <http://health.hawaii.gov/fhsd/home/hawaii-pregnancy-risk-assessment-monitoring-system-prams/>

BRFSS Analysis

Table 1. 30-day current drinking by county, sex, and race for years 2011-2017

	2011		2012		2013		2014		2015		2016		2017	
	%	95% CI	%	95% CI	%	95% CI	%	95% CI	%	95% CI	%	95% CI	%	95% CI
Overall														
Hawaii State	53.1	(51.3-54.9)	50.3	(48.5-52.0)	49.3	(47.6-51.0)	51.0	(49.3-52.7)	51.8	(50.1-53.5)	49.6	(48.0-51.2)	51.6	(50.0-53.2)
County														
Hawaii County	56.1	(52.2-59.9)	52.8	(48.9-56.7)	51.0	(47.3-54.6)	51.0	(47.3-54.6)	51.1	(47.3-54.9)	50.0	(46.2-53.9)	50.9	(47.5-54.3)
Honolulu County	52.0	(49.7-54.3)	49.3	(47.0-51.5)	48.1	(45.9-50.3)	49.8	(47.5-52.0)	51.3	(49.1-53.5)	49.4	(47.2-51.5)	51.2	(49.0-53.3)
Kauai County	55.4	(49.5-61.1)	54.2	(48.0-60.2)	48.5	(43.9-53.3)	50.5	(45.7-55.2)	53.4	(48.5-58.2)	54.1	(49.3-58.8)	55.2	(50.3-60.0)
Maui County	53.8	(49.7-57.8)	52.2	(47.7-56.7)	54.2	(50.3-58.1)	57.4	(53.8-61.0)	55.7	(51.8-59.4)	50.3	(46.5-54.0)	53.4	(49.7-57.1)
Sex														
Female	43.4	(41.0-45.8)	39.9	(37.5-42.2)	41.0	(38.8-43.2)	41.4	(39.1-43.8)	43.0	(40.7-45.3)	42.2	(40.0-44.4)	43.4	(41.2-45.6)
Male	62.8	(60.2-65.4)	60.9	(58.4-63.4)	57.8	(55.3-60.2)	60.5	(58.2-62.9)	60.5	(58.2-62.9)	56.9	(54.5-59.2)	59.6	(57.3-61.9)
Race														
Black	67.0	(50.3-81.1)	63.7	(48.6-77.0)	46.6	(31.8-61.9)	66.2	(50.4-79.7)	53.2	(34.4-71.4)	60.6	(46.0-73.9)	47.7	(34.1-61.5)
Caucasian	68.7	(65.6-71.6)	64.4	(61.3-67.4)	63.8	(60.7-66.8)	67.4	(64.1-70.5)	65.8	(62.6-68.9)	63.6	(60.4-66.6)	67.3	(64.3-70.2)
Chinese	43.0	(35.5-50.7)	37.8	(31.3-44.7)	41.7	(34.7-48.9)	43.5	(36.1-51.1)	43.0	(36.1-50.2)	38.4	(31.9-45.3)	40.2	(33.8-46.9)
Filipino	43.4	(38.4-48.5)	42.1	(36.9-47.5)	39.2	(34.6-43.9)	42.2	(37.6-46.8)	42.5	(37.6-47.5)	41.1	(36.9-45.4)	43.2	(39.0-47.4)
Japanese	40.5	(36.9-44.1)	42.4	(38.8-46.0)	40.9	(37.4-44.4)	42.1	(38.4-45.9)	43.1	(39.5-46.7)	40.3	(36.8-43.8)	45.9	(42.2-49.6)
Native Alaskan/ American Indian	62.6	(49.4-74.5)	65.5	(55.2-74.8)	60.3	(48.7-71.2)	49.7	(38.8-60.7)	62.5	(49.8-74.0)	56.6	(44.1-68.5)	56.3	(42.8-69.2)
Native Hawaiian	51.7	(47.3-56.0)	49.2	(45.0-53.5)	48.9	(45.1-52.6)	49.8	(46.0-53.5)	49.5	(45.9-53.1)	47.3	(43.7-50.9)	49.6	(46.1-53.0)
Other Asian	52.6	(40.2-64.7)	37.1	(26.7-48.4)	53.8	(41.9-65.5)	45.1	(33.9-56.8)	57.7	(43.8-70.7)	40.1	(30.0-50.9)	48.4	(37.7-59.2)
Other Pacific Islander	51.3	(35.2-67.2)	44.3	(30.9-58.5)	40.7	(29.6-52.5)	34.1	(24.7-44.6)	40.6	(28.9-53.1)	42.1	(31.7-53.2)	39.0	(28.0-50.8)
Other Race	64.2	(55.7-72.1)	56.2	(46.8-65.3)	49.8	(42.1-57.4)	46.1	(39.1-53.1)	57.7	(49.9-65.3)	60.2	(53.2-66.9)	46.9	(40.4-53.6)

Note:

Data Source: Hawai'i BRFSS

Table 2. 30-day current drinking by county, sex, and race for years 2011-2017 (age-adjusted)

	2011		2012		2013		2014		2015		2016		2017	
	%	95% CI	%	95% CI	%	95% CI	%	95% CI	%	95% CI	%	95% CI	%	95% CI
Overall														
Hawaii State	54.2	(52.4-56.1)	51.1	(49.3-53.0)	49.7	(48.0-51.5)	51.9	(50.1-53.7)	52.8	(51.0-54.5)	50.2	(48.5-51.9)	52.7	(51.0-54.4)
County														
Hawaii County	57.0	(52.8-61.1)	53.4	(49.2-57.6)	51.2	(47.3-55.2)	52.3	(48.2-56.4)	52.3	(47.8-56.7)	50.8	(46.4-55.1)	51.9	(48.2-55.6)
Honolulu County	53.1	(50.7-55.5)	50.3	(48.0-52.6)	48.5	(46.2-50.7)	50.8	(48.4-53.2)	52.3	(50.1-54.6)	49.9	(47.7-52.1)	52.3	(50.1-54.5)
Kauai County	56.3	(49.5-62.9)	55.5	(48.8-62.0)	50.5	(45.4-55.6)	52.1	(46.9-57.2)	54.3	(49.2-59.2)	54.7	(49.4-60.0)	57.7	(52.3-62.9)
Maui County	54.6	(50.3-58.9)	52.6	(47.8-57.3)	54.2	(50.0-58.4)	58.5	(54.6-62.3)	56.5	(52.4-60.5)	51.3	(47.3-55.4)	53.6	(49.7-57.4)
Sex														
Female	45.5	(42.9-48.0)	41.3	(38.9-43.8)	41.6	(39.3-44.0)	42.8	(40.3-45.3)	44.9	(42.4-47.4)	43.7	(41.4-46.1)	45.3	(43.0-47.7)
Male	63.1	(60.5-65.7)	61.3	(58.7-63.8)	58.0	(55.6-60.4)	61.1	(58.6-63.5)	60.7	(58.3-63.1)	56.7	(54.3-59.1)	60.0	(57.6-62.3)
Race														
Black	63.5	(51.4-74.5)	58.5	(46.4-70.0)	55.6	(44.5-66.3)	68.5	(54.9-80.0)	55.7	(44.0-67.1)	57.0	(44.2-69.2)	48.5	(37.0-60.1)
Caucasian	69.9	(66.1-73.6)	64.0	(60.7-67.3)	62.7	(59.0-66.2)	67.9	(64.3-71.4)	66.5	(62.5-70.3)	64.2	(60.6-67.8)	67.6	(64.3-70.8)
Chinese	43.9	(36.2-51.8)	39.3	(32.6-46.4)	43.9	(36.9-51.2)	46.1	(37.7-54.6)	44.1	(36.8-51.7)	38.2	(31.6-45.2)	44.6	(37.6-51.8)
Filipino	43.6	(38.8-48.6)	42.2	(37.4-47.0)	38.1	(33.6-42.8)	42.6	(38.2-47.1)	43.0	(38.1-48.0)	40.6	(36.4-44.8)	45.2	(41.2-49.2)
Japanese	46.3	(41.3-51.4)	48.0	(43.5-52.6)	47.5	(43.1-52.0)	47.5	(42.7-52.4)	48.1	(43.7-52.6)	46.4	(41.7-51.2)	52.7	(48.0-57.3)
Native Alaskan/ American Indian	64.7	(54.8-73.7)	66.9	(57.0-75.8)	60.0	(48.8-70.4)	49.2	(39.2-59.3)	59.4	(46.9-71.1)	54.5	(43.1-65.6)	57.0	(46.8-66.8)
Native Hawaiian	50.0	(46.0-54.0)	47.6	(43.7-51.6)	46.3	(42.7-49.9)	47.1	(43.6-50.6)	48.5	(45.0-51.9)	46.6	(43.2-50.0)	49.1	(45.7-52.4)
Other Asian	55.0	(43.8-65.8)	40.4	(31.0-50.3)	53.7	(43.0-64.1)	47.5	(35.6-59.6)	53.3	(42.9-63.6)	40.3	(31.7-49.4)	47.8	(37.7-58.1)
Other Pacific Islander	42.1	(31.9-52.9)	36.5	(27.1-46.6)	46.4	(36.8-56.2)	28.3	(20.5-37.2)	30.2	(22.5-38.7)	35.2	(27.1-43.9)	33.5	(24.7-43.4)
Other Race	60.6	(53.2-67.7)	54.6	(46.4-62.5)	49.3	(42.3-56.4)	45.6	(38.7-52.6)	56.4	(48.5-64.2)	60.3	(53.3-67.0)	47.7	(41.4-54.1)

Note:

Data Source: Hawai'i BRFSS

Table 3. 30-day binge drinking by county, sex, and race in 2011-2017

	2011		2012		2013		2014		2015		2016		2017	
	%	95% CI	%	95% CI	%	95% CI	%	95% CI	%	95% CI	%	95% CI	%	95% CI
Overall														
Hawaii State	21.5	(19.9-23.2)	18.2	(16.9-19.6)	18.3	(17.0-19.6)	19.7	(18.3-21.2)	18.9	(17.5-20.3)	18.6	(17.3-19.9)	19.5	(18.2-20.9)
County														
Hawaii County	22.5	(18.9-26.3)	21.1	(17.9-24.6)	15.5	(13.2-18.0)	20.0	(17.1-23.2)	20.3	(17.4-23.5)	20.5	(17.3-24.0)	19.0	(16.3-21.9)
Honolulu County	21.3	(19.2-23.5)	17.6	(16.0-19.3)	18.7	(16.9-20.5)	19.2	(17.3-21.1)	18.5	(16.6-20.4)	18.0	(16.3-19.8)	19.0	(17.3-20.9)
Kauai County	17.7	(13.2-23.1)	21.4	(15.6-28.2)	18.2	(14.9-21.9)	19.5	(15.8-23.6)	19.4	(15.6-23.6)	20.8	(16.9-25.1)	21.8	(17.4-26.6)
Maui County	22.6	(19.3-26.2)	17.6	(14.3-21.2)	18.4	(15.6-21.6)	23.4	(20.0-27.1)	19.4	(16.3-22.8)	18.9	(15.9-22.1)	20.5	(17.5-23.7)
Sex														
Female	12.3	(10.6-14.1)	11.0	(9.6-12.5)	11.2	(9.8-12.8)	11.4	(9.9-13.0)	11.7	(10.2-13.4)	12.8	(11.2-14.4)	12.9	(11.4-14.5)
Male	30.8	(28.2-33.5)	25.7	(23.5-27.9)	25.4	(23.3-27.7)	28.0	(25.7-30.4)	26.1	(23.9-28.4)	24.3	(22.2-26.4)	26.1	(24.0-28.3)
Race														
Black	36.1	(18.5-56.9)	17.4	(9.2-28.6)	20.7	(11.2-33.3)	-	-	-	-	26.2	(14.4-41.3)	14.3	(7.1-24.8)
Caucasian	21.5	(18.6-24.7)	18.8	(16.5-21.3)	18.9	(16.4-21.6)	21.7	(18.9-24.8)	20.1	(17.2-23.2)	20.9	(18.3-23.6)	22.5	(19.5-25.7)
Chinese	12.5	(7.4-19.4)	13.1	(8.6-18.9)	8.3	(4.6-13.4)	13.0	(8.3-19.1)	11.0	(7.0-16.1)	8.2	(4.4-13.7)	9.0	(5.7-13.3)
Filipino	18.5	(14.5-23.1)	13.3	(10.3-16.8)	16.0	(12.5-20.1)	14.7	(11.4-18.6)	16.8	(12.9-21.4)	15.5	(12.4-19.0)	15.4	(12.5-18.7)
Japanese	15.6	(12.7-18.8)	14.3	(11.9-17.1)	12.3	(10.1-14.7)	13.0	(10.4-15.8)	12.5	(10.2-15.2)	12.0	(9.7-14.6)	16.4	(13.6-19.4)
Native Alaskan/ American Indian	28.3	(17.6-41.1)	23.8	(15.6-33.7)	18.6	(11.5-27.6)	22.0	(13.4-32.7)	22.1	(13.0-33.7)	20.3	(10.5-33.6)	29.2	(18.7-41.7)
Native Hawaiian	31.0	(26.7-35.5)	26.5	(22.8-30.4)	26.2	(22.7-29.8)	30.0	(26.4-33.8)	26.6	(23.4-29.9)	24.5	(21.3-27.8)	26.4	(23.4-29.5)
Other Asian	23.6	(14.9-34.4)	10.9	(5.9-17.9)	27.4	(17.7-39.0)	17.3	(9.2-28.4)	-	-	15.3	(8.9-23.7)	12.8	(6.9-21.1)
Other Pacific Islander	23.0	(11.9-37.9)	27.7	(16.1-41.9)	19.6	(11.9-29.5)	21.4	(14.2-30.3)	26.7	(16.5-39.2)	31.1	(20.9-42.9)	27.9	(17.7-40.2)
Other Race	26.5	(19.1-35.0)	20.2	(14.1-27.5)	21.5	(15.3-29.0)	20.0	(14.5-26.5)	22.6	(16.3-30.0)	21.4	(15.6-28.2)	15.7	(11.4-20.9)

Note:

Data Source: Hawai'i BRFSS

Table 4. 30-day binge drinking by county, sex, and race in 2011-2017 (age-adjusted)

	2011		2012		2013		2014		2015		2016		2017	
	%	95% CI	%	95% CI	%	95% CI	%	95% CI	%	95% CI	%	95% CI	%	95% CI
Overall														
Hawaii State	22.7	(21.0-24.4)	19.2	(17.8-20.7)	19.4	(18.0-20.8)	20.9	(19.4-22.4)	19.9	(18.4-21.4)	19.5	(18.1-21.0)	20.7	(19.3-22.2)
County														
Hawaii County	23.2	(19.6-27.1)	22.9	(19.4-26.7)	16.8	(14.1-19.7)	22.2	(18.7-25.9)	23.0	(19.5-26.8)	22.8	(19.2-26.8)	20.8	(17.7-24.1)
Honolulu County	22.4	(20.3-24.6)	18.6	(16.9-20.4)	19.5	(17.7-21.5)	20.0	(18.1-22.1)	19.2	(17.3-21.2)	18.6	(16.8-20.5)	20.0	(18.2-21.9)
Kauai County	18.7	(13.8-24.6)	22.9	(16.8-30.0)	20.6	(16.7-24.9)	22.1	(17.8-26.9)	21.6	(17.3-26.4)	22.9	(18.3-28.0)	24.6	(19.6-30.3)
Maui County	23.5	(19.8-27.4)	18.4	(14.8-22.4)	20.0	(16.8-23.5)	25.6	(22.0-29.6)	20.7	(17.3-24.4)	20.3	(17.1-23.8)	21.8	(18.6-25.3)
Sex														
Female	13.9	(12.1-15.9)	12.2	(10.7-13.9)	12.3	(10.7-14.0)	12.5	(10.8-14.3)	12.8	(11.2-14.7)	14.3	(12.5-16.1)	14.6	(12.9-16.4)
Male	31.0	(28.4-33.7)	26.2	(23.9-28.5)	26.4	(24.2-28.6)	28.8	(26.5-31.2)	26.6	(24.4-29.0)	24.5	(22.4-26.7)	26.6	(24.4-28.8)
Race														
Black	31.1	(20.1-44.0)	16.1	(9.3-25.1)	16.9	(8.9-27.9)	21.8	(11.9-34.8)	-	-	21.2	(12.0-33.1)	12.8	(6.6-21.7)
Caucasian	23.7	(20.1-27.6)	20.1	(17.4-23.0)	20.4	(17.5-23.5)	23.9	(20.5-27.6)	22.9	(19.2-26.9)	23.3	(20.2-26.6)	25.2	(22.0-28.7)
Chinese	13.4	(8.4-19.8)	14.7	(9.9-20.6)	10.5	(6.0-16.8)	12.8	(8.1-18.9)	11.6	(7.3-17.4)	8.6	(4.7-14.4)	10.2	(6.3-15.3)
Filipino	18.7	(14.8-23.1)	13.1	(10.3-16.4)	15.7	(12.3-19.6)	15.0	(11.8-18.8)	16.7	(12.8-21.1)	15.4	(12.3-18.8)	16.4	(13.4-19.8)
Japanese	21.9	(17.5-26.9)	19.3	(15.8-23.1)	15.7	(12.6-19.1)	17.3	(13.6-21.6)	16.1	(12.5-20.3)	17.1	(13.4-21.3)	20.9	(17.0-25.2)
Native Alaskan/ American Indian	25.6	(16.8-36.1)	25.4	(17.6-34.7)	18.6	(11.7-27.3)	19.2	(12.0-28.4)	20.4	(11.9-31.6)	20.0	(11.1-31.8)	30.2	(20.6-41.2)
Native Hawaiian	28.7	(25.1-32.6)	25.3	(21.8-29.1)	23.3	(20.3-26.5)	27.6	(24.4-31.0)	25.4	(22.5-28.5)	24.1	(21.1-27.3)	25.5	(22.7-28.5)
Other Asian	25.6	(17.0-35.8)	12.2	(6.8-19.8)	27.0	(17.7-38.1)	16.3	(8.8-26.6)	11.9	(6.1-20.3)	15.9	(10.2-23.0)	11.6	(6.5-18.8)
Other Pacific Islander	17.8	(9.5-29.2)	20.9	(13.4-30.1)	18.9	(11.1-29.2)	18.6	(12.0-26.9)	19.8	(13.1-28.1)	26.1	(18.7-34.7)	19.9	(13.4-27.9)
Other Race	24.3	(17.5-32.1)	19.6	(13.9-26.4)	21.3	(15.6-28.1)	18.8	(13.7-24.9)	22.6	(16.1-30.2)	20.3	(15.2-26.2)	15.4	(11.2-20.4)

Note:

Data Source: Hawai'i BRFSS

Table 5. Prescription drug overuse by county, sex, and race in 2015-2017

	2015		2016		2017	
	%	95% CI	%	95% CI	%	95% CI
Overall						
Hawaii State	4.6	(3.7-5.5)	3.5	(2.9-4.2)	4.5	(3.8-5.3)
County						
Hawaii County	4.9	(2.7-8.0)	4.5	(3.2-6.2)	6.9	(5.0-9.2)
Honolulu County	3.9	(3.0-5.1)	3.4	(2.6-4.3)	3.9	(3.0-4.8)
Kauai County	5.6	(3.4-8.6)	2.4	(1.4-3.9)	5.4	(3.5-7.8)
Maui County	7.3	(5.1-10.1)	3.5	(2.3-5.0)	4.8	(3.3-6.6)
Sex						
Female	3.7	(2.7-5.0)	3.1	(2.3-4.0)	3.5	(2.7-4.5)
Male	5.5	(4.3-6.9)	3.9	(3.0-5.0)	5.5	(4.5-6.7)
Race						
Black	-	-	-	-	-	-
Caucasian	4.6	(3.3-6.2)	3.5	(2.5-4.9)	5.4	(3.9-7.1)
Chinese	-	-	-	-	-	-
Filipino	-	-	-	-	4.7	(2.9-7.0)
Japanese	-	-	1.8	(1.0-2.9)	2.4	(1.5-3.7)
Native Alaskan/ American Indian	-	-	-	-	-	-
Native Hawaiian	6.4	(4.5-8.9)	4.7	(3.2-6.6)	5.3	(3.9-7.1)
Other Asian	-	-	-	-	-	-
Other Pacific Islander	-	-	-	-	-	-
Other Race	-	-	-	-	7.0	(3.5-12.4)

Note:

Data Source: Hawai'i BRFSS

Table 6. Prescription drug overuse by county, sex, and race in 2015-2017 (age-adjusted)

	2015		2016		2017	
	%	95% CI	%	95% CI	%	95% CI
Overall						
Hawaii State	4.7	(3.8-5.7)	3.6	(2.9-4.4)	4.7	(3.9-5.5)
County						
Hawaii County	5.6	(2.9-9.6)	4.3	(2.8-6.2)	7.5	(5.3-10.4)
Honolulu County	4.0	(2.9-5.2)	3.5	(2.6-4.5)	3.9	(3.0-4.9)
Kauai County	5.5	(3.3-8.6)	2.6	(1.4-4.4)	5.7	(3.5-8.5)
Maui County	7.8	(5.3-11.0)	3.7	(2.4-5.3)	5.2	(3.5-7.3)
Sex						
Female	4.0	(2.8-5.6)	3.2	(2.4-4.3)	3.6	(2.7-4.6)
Male	5.4	(4.1-6.8)	4.0	(3.0-5.2)	5.6	(4.5-6.9)
Race						
Black	-	-	-	-	-	-
Caucasian	4.6	(3.1-6.6)	3.7	(2.3-5.7)	6.2	(4.4-8.5)
Chinese	-	-	-	-	-	-
Filipino	-	-	2.4	(1.2-4.3)	5.0	(3.0-7.6)
Japanese	-	-	-	-	1.7	(1.0-2.8)
Native Alaskan/ American Indian	-	-	-	-	-	-
Native Hawaiian	6.1	(4.4-8.3)	4.4	(3.1-6.1)	5.2	(3.9-6.9)
Other Asian	-	-	-	-	-	-
Other Pacific Islander	-	-	-	-	-	-
Other Race	-	-	-	-	5.7	(3.2-9.3)

Note:

Data Source: Hawai'i BRFSS

Table 7. Frequency in the past 30 days of driving after having too much to drink (age 18 and older) in 2012, 2014, and 2016

	2012			2014			2016		
	%	lower CI	upper CI	%	lower CI	upper CI	%	lower CI	upper CI
None	94.1	92.7	95.3	95.9	94.9	96.7	94.5	93.4	95.5
Once	2.9	2.0	3.9	1.8	1.3	2.5	2.9	2.2	3.8
Twice	1.1	0.7	1.8	1.2	0.7	1.8	1.3	0.9	1.9
Three or more	1.9	1.2	2.8	1.1	0.7	1.7	1.3	0.9	1.9

Note:

Data Source: Hawai'i BRFSS

Table 8. Frequency in the past 30 days of driving after having too much to drink (age 18 and older) in 2012, 2014, and 2016 (age-adjusted)

	2012			2014			2016		
	%	lower CI	upper CI	%	lower CI	upper CI	%	lower CI	upper CI
None	94.0	92.6	95.3	96.1	95.1	96.9	94.6	93.5	95.6
Once	3.0	2.1	4.2	1.7	1.2	2.3	2.9	2.1	3.8
Twice	1.1	0.7	1.8	1.2	0.7	1.8	1.3	0.8	1.9
Three or more	1.8	1.2	2.7	1.1	0.6	1.6	1.3	0.8	1.8

Note:

Data Source: Hawai'i BRFSS

Table 9. Current number of prescription drugs used in 2015-2017

	2015			2016			2017		
	%	lower CI	upper CI	%	lower CI	upper CI	%	lower CI	upper CI
0 meds	48.8	47.0	50.6	47.6	45.9	49.3	45.4	43.7	47.1
1-2 meds	27.4	25.9	29.0	26.9	25.5	28.5	28.0	26.5	29.5
3-4 meds	13.3	12.2	14.4	13.8	12.8	14.9	14.9	13.7	16.1
5-7 meds	7.4	6.6	8.2	8.0	7.2	8.8	8.3	7.4	9.3
8+ meds	3.1	2.6	3.7	3.7	3.1	4.3	3.4	2.8	4.0

Note:

Data Source: Hawai'i BRFSS

Table 10. Current number of prescription drugs used in 2015-2017 (age-adjusted)

	2015			2016			2017		
	%	lower CI	upper CI	%	lower CI	upper CI	%	lower CI	upper CI
0 meds	52.8	51.1	54.5	51.7	50.0	53.4	50.8	49.1	52.5
1-2 meds	26.9	25.2	28.5	26.4	24.8	28.0	27.3	25.7	28.9
3-4 meds	11.6	10.6	12.7	12.0	11.1	13.0	12.6	11.5	13.7
5-7 meds	6.1	5.4	6.9	6.8	6.1	7.6	6.6	5.8	7.5
8+ meds	2.6	2.2	3.1	3.2	2.7	3.7	2.8	2.2	3.4

Note:

Data Source: Hawai'i BRFSS

YRBS Analysis

Table 11. Ever drank alcohol among public high school students by county, sex, grade, and race for years 2011-2017

	2011		2013		2015		2017	
	%	95% CI	%	95% CI	%	95% CI	%	95% CI
Overall								
Hawaii State	55.8	(52.5-59.2)	52.5	(49.2-55.8)	49.4	(46.0-52.7)	49.0	(45.9-52.2)
County								
Hawaii County	-	-	60.5	(55.7-65.1)	58.0	(54.1-61.9)	58.7	(54.6-62.7)
Honolulu County	53.6	(48.6-58.6)	49.3	(44.6-54.0)	47.0	(42.2-51.9)	45.9	(41.6-50.3)
Kauai County	53.0	(47.3-58.7)	57.0	(52.5-61.4)	48.3	(44.0-52.7)	51.4	(47.8-54.9)
Maui County	55.3	(51.3-59.3)	58.7	(53.7-63.5)	53.2	(48.1-58.2)	54.7	(50.6-58.6)
Sex								
Female	58.7	(54.7-62.6)	54.9	(50.8-58.9)	51.3	(47.3-55.3)	52.0	(47.7-56.2)
Male	53.0	(48.5-57.5)	50.2	(46.0-54.4)	47.2	(43.6-50.8)	45.7	(42.2-49.1)
Grade								
9th grade	46.4	(41.6-51.3)	41.1	(34.6-47.8)	32.1	(27.3-37.1)	38.7	(32.9-44.7)
10th grade	54.3	(50.3-58.3)	49.5	(45.5-53.6)	50.8	(45.8-55.7)	47.5	(42.4-52.6)
11th grade	57.8	(49.4-65.9)	53.6	(49.4-57.7)	56.6	(50.9-62.3)	51.3	(47.0-55.7)
12th grade	67.0	(62.8-71.0)	67.7	(61.7-73.3)	61.0	(55.7-66.1)	61.7	(56.2-66.9)
Race								
Black	-	-	-	-	-	-	-	-
Caucasian	63.2	(57.8-68.4)	52.2	(45.9-58.5)	53.3	(46.0-60.6)	54.8	(49.5-60.1)
Filipino	52.7	(47.3-58.2)	51.7	(46.1-57.2)	45.3	(38.9-51.8)	46.8	(42.8-50.8)
Japanese	41.6	(33.2-50.4)	33.5	(26.6-41.0)	35.8	(30.2-41.6)	30.0	(19.1-42.9)
Native Alaskan/ American Indian	-	-	-	-	-	-	-	-
Native Hawaiian	66.0	(62.1-69.7)	61.9	(57.2-66.4)	59.4	(55.6-63.0)	54.8	(47.7-61.8)
Other Asian	29.0	(24.8-33.4)	32.0	(26.2-38.2)	28.1	(22.2-34.6)	39.3	(32.7-46.2)
Other Pacific Islander	48.6	(40.9-56.3)	57.9	(46.1-69.0)	44.5	(38.3-50.9)	41.9	(34.5-49.6)
Other	54.5	(48.9-60.0)	54.0	(48.2-59.6)	52.1	(47.9-56.3)	50.2	(45.7-54.8)

Note:

Data Source: Hawai'i YRBS

Table 12. Current alcohol use among public high school students by county, sex, grade, and race for years 2011-2017

	2011		2013		2015		2017	
	%	95% CI	%	95% CI	%	95% CI	%	95% CI
Overall								
Hawaii State	29.1	(25.8-32.5)	25.2	(21.9-28.6)	25.1	(22.9-27.5)	24.5	(22.0-27.2)
County								
Hawaii County	-	-	31.7	(27.6-36.0)	29.9	(26.5-33.3)	32.1	(28.7-35.6)
Honolulu County	26.8	(22.0-32.0)	22.6	(17.8-28.1)	23.5	(20.2-27.1)	21.0	(17.6-24.8)
Kauai County	29.7	(25.4-34.3)	26.4	(22.2-30.8)	25.6	(22.0-29.3)	30.1	(26.2-34.1)
Maui County	28.7	(25.3-32.4)	30.9	(26.5-35.5)	28.7	(25.1-32.6)	32.8	(29.1-36.7)
Sex								
Female	32.3	(28.4-36.4)	26.0	(22.2-30.1)	26.7	(23.7-29.9)	26.4	(22.6-30.4)
Male	25.8	(22.0-29.8)	24.1	(20.5-28.1)	23.2	(20.1-26.6)	22.1	(19.5-25.0)
Grade								
9th grade	21.5	(18.4-24.8)	18.3	(12.6-25.3)	16.7	(13.5-20.4)	17.3	(13.4-21.8)
10th grade	28.2	(24.0-32.7)	19.3	(16.0-23.0)	24.5	(21.1-28.2)	20.5	(16.9-24.4)
11th grade	30.2	(22.8-38.5)	25.7	(21.8-29.9)	25.9	(22.3-29.7)	25.2	(22.1-28.5)
12th grade	38.4	(33.1-43.9)	38.4	(33.1-44.0)	35.0	(30.7-39.5)	36.8	(31.1-42.8)
Race								
Black	-	-	-	-	-	-	-	-
Caucasian	39.6	(34.4-44.9)	29.2	(22.4-36.8)	30.4	(24.4-37.0)	32.8	(27.6-38.3)
Filipino	24.2	(19.0-30.1)	21.6	(17.3-26.5)	20.6	(16.6-25.1)	19.7	(15.4-24.6)
Japanese	20.2	(14.7-26.7)	12.0	(7.6-17.7)	20.1	(13.0-28.9)	11.9	(5.4-21.9)
Native Alaskan/ American Indian	-	-	-	-	-	-	-	-
Native Hawaiian	35.1	(30.5-40.0)	31.8	(25.6-38.5)	30.1	(26.5-34.0)	29.6	(24.7-34.9)
Other Asian	10.6	(3.8-22.0)	10.2	(4.3-19.6)	10.1	(6.7-14.5)	16.1	(9.6-24.5)
Other Pacific Islander	31.8	(23.5-41.0)	28.7	(19.1-39.9)	14.7	(10.4-19.9)	21.4	(16.1-27.7)
Other	28.2	(24.2-32.5)	26.3	(23.4-29.3)	27.3	(23.9-30.8)	23.4	(20.1-26.9)

Note:

Data Source: Hawai'i YRBS

Table 13. Current binge drinking among public high school students by county, sex, grade, and race for years 2011-2015

	2011		2013		2015	
	%	95% CI	%	95% CI	%	95% CI
Overall						
Hawaii State	15.4	(13.2-17.7)	12.7	(10.8-14.9)	13.4	(12.0-15.0)
County						
Hawaii County	-	-	15.9	(12.5-19.8)	16.0	(13.6-18.6)
Honolulu County	13.4	(10.3-17.0)	11.3	(8.4-14.7)	12.4	(10.4-14.7)
Kauai County	19.3	(15.7-23.3)	15.3	(11.8-19.3)	14.1	(11.3-17.3)
Maui County	16.4	(13.9-19.2)	15.9	(12.6-19.7)	16.1	(13.4-19.2)
Sex						
Female	16.4	(13.9-19.0)	12.7	(10.1-15.7)	13.2	(11.3-15.3)
Male	14.3	(11.5-17.5)	12.7	(10.8-14.9)	13.5	(11.2-16.1)
Grade						
9th grade	10.9	(7.9-14.6)	8.3	(5.9-11.4)	10.0	(7.4-13.0)
10th grade	14.1	(10.8-17.9)	9.0	(6.7-11.6)	13.2	(10.6-16.2)
11th grade	16.9	(12.6-22.1)	12.6	(10.0-15.6)	13.7	(10.9-16.9)
12th grade	20.5	(17.0-24.4)	21.5	(16.7-26.9)	17.4	(14.3-21.0)
Race						
Black	-	-	-	-	-	-
Caucasian	18.9	(14.6-23.8)	17.1	(13.2-21.6)	13.3	(9.5-17.8)
Filipino	11.8	(8.1-16.5)	7.6	(5.4-10.5)	10.2	(7.5-13.3)
Japanese	8.2	(4.8-12.8)	5.1	(2.1-10.2)	9.1	(4.8-15.4)
Native Alaskan/ American Indian	-	-	-	-	-	-
Native Hawaiian	19.5	(15.1-24.4)	18.4	(13.1-24.8)	19.2	(16.4-22.3)
Other Asian	6.1	(2.1-13.2)	4.9	(1.5-11.7)	4.8	(2.0-9.3)
Other Pacific Islander	23.9	(17.5-31.2)	16.6	(10.4-24.5)	9.3	(5.8-13.9)
Other	15.8	(13.0-18.9)	13.7	(11.7-15.9)	15.4	(12.9-18.2)

Note:

Data Source: Hawai'i YRBS

Table 14. Consumed alcohol before age 13 among public high school students by county, sex, grade, and race for years 2011-2017

	2011		2013		2015		2017	
	%	95% CI	%	95% CI	%	95% CI	%	95% CI
Overall								
Hawaii State	19.2	(17.6-21.0)	17.5	(15.9-19.3)	16.9	(14.7-19.2)	16.8	(14.8-19.0)
County								
Hawaii County	-	-	22.9	(19.5-26.6)	22.4	(18.8-26.3)	20.5	(18.0-23.2)
Honolulu County	17.5	(15.2-19.9)	16.3	(14.0-18.9)	15.0	(12.0-18.4)	15.4	(12.8-18.5)
Kauai County	20.9	(17.1-25.1)	18.1	(14.8-21.8)	19.2	(16.7-21.9)	17.8	(15.0-20.8)
Maui County	21.6	(18.5-24.9)	17.7	(15.0-20.7)	19.9	(17.3-22.6)	19.6	(16.4-23.2)
Sex								
Female	18.2	(15.9-20.7)	16.5	(14.2-18.9)	15.0	(12.9-17.2)	14.5	(12.0-17.2)
Male	20.3	(18.1-22.7)	18.6	(16.4-21.0)	18.6	(16.0-21.4)	18.9	(16.1-21.9)
Grade								
9th grade	23.6	(20.3-27.1)	21.5	(17.9-25.5)	15.6	(12.1-19.6)	19.5	(15.8-23.6)
10th grade	18.8	(15.5-22.4)	15.8	(12.8-19.1)	20.2	(16.8-24.0)	17.8	(14.4-21.6)
11th grade	14.7	(11.6-18.3)	16.7	(13.3-20.5)	16.0	(13.0-19.4)	13.6	(11.1-16.4)
12th grade	17.8	(14.9-21.0)	14.8	(11.6-18.5)	14.5	(11.9-17.4)	15.1	(11.4-19.4)
Race								
Black	-	-	-	-	-	-	-	-
Caucasian	19.1	(14.6-24.3)	12.6	(8.9-17.2)	15.4	(10.9-20.9)	14.9	(10.7-19.9)
Filipino	14.3	(10.5-18.9)	14.9	(11.3-19.1)	12.7	(10.2-15.5)	15.0	(11.8-18.7)
Japanese	14.6	(7.9-23.8)	11.0	(7.2-15.9)	8.9	(4.9-14.7)	8.4	(3.9-15.3)
Native Alaskan/ American Indian	-	-	-	-	-	-	-	-
Native Hawaiian	25.6	(22.1-29.5)	25.9	(22.1-29.9)	26.0	(21.8-30.7)	21.4	(17.8-25.5)
Other Asian	12.3	(9.1-16.2)	13.4	(8.5-19.8)	6.5	(3.8-10.3)	11.5	(6.9-17.6)
Other Pacific Islander	15.8	(11.3-21.2)	19.0	(12.4-27.2)	14.1	(8.6-21.4)	10.2	(6.5-15.1)
Other	21.0	(18.2-24.0)	17.4	(14.6-20.5)	17.9	(15.2-21.0)	18.0	(15.2-21.1)

Note:

Data Source: Hawai'i YRBS

Table 15. Ridden in a car with someone, including self, who was high or had been using alcohol or drugs in the past 30 days among public high school students by county, sex, grade, and race for years 2013-2017

	2013		2015		2017	
	%	95% CI	%	95% CI	%	95% CI
Overall						
Hawaii State	23.0	(20.6-25.6)	20.3	(18.4-22.2)	20.6	(19.0-22.3)
County						
Hawaii County	26.6	(23.4-29.9)	23.3	(20.6-26.3)	23.6	(20.5-27.0)
Honolulu County	20.2	(16.5-24.4)	18.1	(15.6-20.8)	18.8	(16.6-21.2)
Kauai County	29.8	(26.6-33.2)	24.6	(21.1-28.3)	24.5	(21.7-27.6)
Maui County	30.6	(27.3-34.0)	27.0	(23.8-30.4)	25.6	(22.2-29.3)
Sex						
Female	24.4	(21.5-27.5)	21.2	(18.6-24.1)	19.2	(16.9-21.6)
Male	21.5	(18.1-25.2)	19.3	(17.0-21.7)	21.8	(18.9-25.0)
Grade						
9th grade	19.7	(16.4-23.4)	14.5	(11.9-17.4)	17.7	(14.9-20.8)
10th grade	19.8	(15.3-24.9)	21.5	(18.6-24.6)	22.0	(18.7-25.7)
11th grade	25.1	(21.5-29.0)	21.2	(17.7-25.0)	19.2	(16.0-22.7)
12th grade	28.4	(23.0-34.4)	25.1	(21.3-29.2)	23.0	(19.2-27.3)
Race						
Black	-	-	-	-	-	-
Caucasian	23.9	(19.6-28.6)	20.0	(16.2-24.2)	23.1	(19.1-27.5)
Filipino	18.1	(14.3-22.3)	15.2	(12.5-18.2)	15.9	(13.3-18.9)
Japanese	12.4	(8.0-18.0)	14.6	(9.8-20.7)	17.7	(9.2-29.5)
Native Alaskan/ American Indian	-	-	-	-	-	-
Native Hawaiian	32.1	(27.7-36.8)	27.5	(24.3-30.9)	24.6	(22.4-26.9)
Other Asian	8.6	(4.9-13.7)	5.8	(2.0-12.6)	13.8	(7.2-23.2)
Other Pacific Islander	31.1	(22.4-40.8)	20.9	(15.0-27.8)	22.0	(16.9-27.8)
Other	24.8	(21.7-28.1)	23.9	(20.7-27.3)	21.4	(18.5-24.4)

Note:

Data Source: Hawai'i YRBS

Table 16. Current marijuana use among public high school students by county, sex, sexual orientation, grade, and race for years 2011-2017

	2011		2013		2015		2017	
	%	95% CI	%	95% CI	%	95% CI	%	95% CI
Overall								
Hawaii State	21.9	(19.1-25.0)	18.9	(16.0-22.1)	19.4	(17.5-21.5)	18.1	(16.0-20.4)
County								
Hawaii County	-	-	23.6	(20.1-27.4)	22.6	(19.7-25.7)	24.1	(21.2-27.2)
Honolulu County	19.1	(15.1-23.6)	16.5	(12.1-21.7)	18.1	(15.3-21.3)	15.8	(12.9-19.1)
Kauai County	23.4	(19.3-27.9)	22.7	(19.2-26.4)	21.3	(18.1-24.7)	20.9	(18.4-23.6)
Maui County	21.9	(18.6-25.4)	24.6	(21.6-27.9)	22.3	(19.0-25.8)	23.1	(20.3-26.1)
Sex								
Female	21.1	(17.6-24.9)	18.0	(14.7-21.5)	18.6	(16.1-21.2)	16.8	(14.4-19.4)
Male	22.9	(20.0-26.0)	19.7	(16.1-23.6)	20.0	(17.1-23.0)	18.7	(16.0-21.5)
Sexual Orientation								
Heterosexual	20.4	(17.6-23.4)	17.4	(14.7-20.3)	17.7	(15.8-19.8)	16.1	(14.0-18.4)
Lesbian, Gay, Bisexual	40.4	(31.2-50.2)	34.7	(27.3-42.7)	28.3	(23.8-33.1)	27.7	(23.2-32.5)
Not sure	22.3	(12.9-34.3)	20.0	(11.1-31.9)	21.0	(12.9-31.3)	18.6	(11.8-27.2)
Grade								
9th grade	19.2	(14.5-24.6)	16.2	(12.5-20.5)	13.1	(10.0-16.7)	14.8	(12.1-17.7)
10th grade	19.7	(16.9-22.8)	16.2	(13.0-19.8)	20.4	(16.0-25.3)	17.4	(13.8-21.6)
11th grade	24.1	(15.9-34.0)	20.3	(15.9-25.3)	21.5	(17.6-25.8)	17.2	(14.1-20.5)
12th grade	25.4	(21.7-29.4)	22.9	(18.1-28.4)	23.4	(19.5-27.7)	23.1	(18.7-28.1)
Race								
Black	-	-	-	-	-	-	-	-
Caucasian	24.8	(18.1-32.6)	23.2	(18.1-29.0)	22.9	(19.0-27.0)	19.3	(16.1-22.8)
Filipino	17.4	(13.2-22.4)	9.4	(7.0-12.3)	11.6	(8.0-16.2)	10.9	(8.0-14.4)
Japanese	9.6	(4.7-16.8)	10.4	(4.1-20.9)	10.1	(5.1-17.4)	9.6	(3.9-18.9)
Native Alaskan/ American Indian	-	-	-	-	-	-	-	-
Native Hawaiian	30.0	(24.7-35.7)	28.7	(22.9-35.2)	28.8	(25.2-32.5)	26.3	(22.6-30.3)
Other Asian	9.0	(2.5-21.4)	7.7	(3.1-15.4)	5.4	(2.2-10.8)	8.0	(4.2-13.6)
Other Pacific Islander	16.8	(10.6-24.9)	25.3	(16.9-35.5)	22.0	(16.1-28.9)	21.6	(16.0-28.1)
Other	22.3	(18.5-26.5)	19.9	(16.9-23.1)	22.5	(19.6-25.6)	19.1	(16.0-22.4)

Note:

Data Source: Hawai'i YRBS

Table 17. Marijuana use before age 13 among public high school students by county, sex, grade, and race for years 2011-2017

	2011		2013		2015		2017	
	%	95% CI	%	95% CI	%	95% CI	%	95% CI
Overall								
Hawaii State	9.5	(8.0-11.1)	10.4	(8.7-12.3)	9.5	(7.9-11.3)	9.1	(7.3-11.0)
County								
Hawaii County	-	-	14.5	(11.7-17.6)	15.5	(13.2-17.9)	14.9	(12.7-17.3)
Honolulu County	6.7	(5.1-8.5)	9.0	(6.6-11.9)	7.4	(5.3-9.8)	7.3	(5.0-10.2)
Kauai County	16.4	(12.7-20.7)	12.5	(9.9-15.5)	12.6	(10.5-14.9)	9.8	(7.7-12.2)
Maui County	12.3	(9.7-15.4)	12.4	(9.7-15.6)	13.5	(11.1-16.1)	12.3	(9.7-15.4)
Sex								
Female	7.5	(5.9-9.3)	9.2	(7.4-11.3)	7.2	(5.8-8.8)	7.3	(5.8-9.1)
Male	11.6	(9.6-13.9)	11.5	(9.2-14.1)	11.6	(9.5-13.9)	10.6	(8.2-13.5)
Grade								
9th grade	10.9	(8.5-13.6)	11.1	(8.4-14.4)	7.7	(5.4-10.6)	8.4	(6.8-10.4)
10th grade	8.7	(6.2-11.7)	9.6	(6.6-13.3)	11.2	(8.2-14.8)	9.3	(6.0-13.5)
11th grade	8.3	(5.2-12.4)	10.2	(7.4-13.7)	9.6	(7.4-12.3)	7.7	(5.6-10.1)
12th grade	9.5	(7.2-12.3)	9.8	(7.1-13.2)	8.6	(6.3-11.3)	10.2	(7.4-13.6)
Race								
Black	-	-	-	-	-	-	-	-
Caucasian	7.9	(5.0-11.7)	10.2	(6.6-14.9)	7.5	(4.8-11.2)	10.2	(6.1-15.7)
Filipino	5.2	(3.2-7.8)	4.4	(2.8-6.5)	5.5	(3.7-7.7)	2.9	(1.7-4.7)
Japanese	5.7	(2.5-10.9)	3.9	(1.1-9.2)	3.5	(1.3-7.5)	2.2	(0.2-8.5)
Native Alaskan/ American Indian	-	-	-	-	-	-	-	-
Native Hawaiian	15.3	(11.6-19.7)	19.6	(16.7-22.8)	17.4	(14.6-20.5)	15.8	(12.7-19.3)
Other Asian	2.2	(0.2-7.9)	3.5	(0.9-8.7)	2.6	(0.8-6.1)	2.8	(0.8-6.7)
Other Pacific Islander	11.4	(4.5-22.7)	14.9	(8.4-23.7)	13.9	(8.8-20.4)	13.5	(8.0-20.8)
Other	10.5	(8.2-13.1)	10.3	(7.9-13.1)	10.1	(7.4-13.5)	9.1	(7.5-11.1)

Note:

Data Source: Hawai'i YRBS

Table 18. Ever used marijuana among public high school students by county, sex, grade, and race for years 2011-2017

	2011		2013		2015		2017	
	%	95% CI	%	95% CI	%	95% CI	%	95% CI
Overall								
Hawaii State	36.3	(32.9-39.8)	34.9	(30.8-39.3)	32.6	(30.0-35.4)	31.1	(28.1-34.2)
County								
Hawaii County	-	-	42.4	(38.0-46.9)	40.7	(37.1-44.3)	41.6	(37.8-45.5)
Honolulu County	32.4	(27.6-37.5)	31.9	(25.6-38.7)	29.8	(26.0-33.8)	27.5	(23.3-32.0)
Kauai County	40.8	(35.2-46.6)	36.0	(31.5-40.6)	36.3	(31.9-40.9)	34.2	(30.8-37.7)
Maui County	38.2	(33.8-42.7)	42.5	(38.1-47.0)	37.8	(33.1-42.6)	37.9	(34.2-41.7)
Sex								
Female	36.8	(32.2-41.5)	33.5	(29.2-37.9)	32.5	(29.1-36.1)	30.8	(27.5-34.2)
Male	35.8	(32.1-39.7)	36.1	(31.5-40.8)	32.4	(29.2-35.8)	30.8	(26.8-35.0)
Grade								
9th grade	25.7	(20.9-31.0)	26.5	(22.2-31.2)	20.6	(16.5-25.1)	23.4	(19.5-27.7)
10th grade	34.1	(29.8-38.7)	30.4	(25.0-36.3)	32.6	(27.6-37.9)	31.2	(25.8-37.1)
11th grade	42.3	(33.0-51.9)	37.9	(31.8-44.3)	36.8	(31.6-42.2)	30.0	(26.4-33.8)
12th grade	45.4	(40.8-50.1)	46.1	(38.7-53.5)	43.0	(37.3-48.8)	41.1	(34.8-47.7)
Race								
Black	-	-	-	-	-	-	-	-
Caucasian	39.3	(32.5-46.4)	35.9	(28.0-44.4)	34.7	(29.7-40.0)	36.3	(31.4-41.4)
Filipino	27.6	(22.2-33.6)	24.3	(19.8-29.4)	21.8	(17.0-27.2)	19.5	(15.5-23.9)
Japanese	20.6	(12.8-30.4)	18.4	(9.0-31.5)	19.3	(12.7-27.5)	16.6	(8.0-28.9)
Native Alaskan/ American Indian	-	-	-	-	-	-	-	-
Native Hawaiian	51.1	(46.9-55.3)	50.5	(46.2-54.8)	47.0	(43.1-50.9)	43.0	(37.5-48.7)
Other Asian	12.5	(5.9-22.2)	15.6	(10.0-22.8)	13.9	(9.2-19.8)	16.7	(11.3-23.4)
Other Pacific Islander	33.6	(23.4-45.0)	41.3	(32.7-50.3)	37.4	(29.2-46.1)	37.8	(28.1-48.2)
Other	38.2	(33.1-43.6)	40.2	(35.6-44.8)	38.5	(34.8-42.4)	33.8	(29.2-38.7)

Note:

Data Source: Hawai'i YRBS

Table 19. Ever used cocaine among public high school students by county, sex, grade, and race for years 2011-2017

	2011		2013		2015		2017	
	%	95% CI	%	95% CI	%	95% CI	%	95% CI
Overall								
Hawaii State	6.4	(5.0-8.1)	6.5	(5.2-8.0)	5.7	(4.8-6.7)	7.1	(5.8-8.6)
County								
Hawaii County	-	-	7.5	(5.4-10.1)	7.4	(5.5-9.7)	7.5	(5.8-9.5)
Honolulu County	5.4	(3.5-8.0)	6.3	(4.5-8.6)	5.1	(3.8-6.6)	6.6	(4.9-8.8)
Kauai County	8.2	(5.6-11.6)	7.1	(4.9-9.9)	7.4	(5.5-9.6)	8.5	(6.5-10.9)
Maui County	5.3	(3.7-7.3)	6.3	(4.5-8.5)	6.3	(4.7-8.3)	8.7	(6.6-11.1)
Sex								
Female	5.6	(4.2-7.4)	6.5	(4.7-8.6)	4.1	(2.9-5.6)	4.5	(3.5-5.8)
Male	7.0	(5.4-8.9)	6.5	(4.8-8.6)	7.0	(5.7-8.5)	8.6	(6.8-10.7)
Grade								
9th grade	4.6	(2.9-6.8)	5.1	(3.5-7.0)	3.3	(2.2-4.8)	5.7	(3.8-8.2)
10th grade	4.2	(2.8-6.1)	4.5	(2.8-7.0)	6.5	(4.5-9.0)	5.9	(4.0-8.3)
11th grade	9.1	(5.5-14.0)	6.7	(4.6-9.4)	5.1	(3.7-6.8)	5.8	(4.5-7.3)
12th grade	8.2	(6.1-10.7)	9.3	(6.2-13.3)	7.4	(5.7-9.4)	9.8	(6.6-13.9)
Race								
Black	-	-	-	-	-	-	-	-
Caucasian	11.4	(7.5-16.5)	9.6	(6.2-13.9)	7.7	(4.9-11.4)	9.1	(5.9-13.2)
Filipino	4.6	(2.8-7.1)	3.1	(1.4-5.9)	2.1	(1.0-3.9)	2.8	(1.6-4.4)
Japanese	5.3	(2.1-10.8)	8.0	(2.7-17.7)	4.2	(1.4-9.4)	5.1	(1.3-13.1)
Native Alaskan/ American Indian	-	-	-	-	-	-	-	-
Native Hawaiian	5.0	(3.2-7.6)	8.2	(6.4-10.3)	7.8	(6.1-9.7)	9.3	(7.1-11.8)
Other Asian	3.6	(1.1-8.4)	1.4	(0.2-4.6)	1.5	(0.4-3.6)	2.2	(0.5-6.4)
Other Pacific Islander	8.6	(5.3-12.9)	5.2	(2.4-9.7)	3.5	(1.6-6.6)	6.1	(2.7-11.4)
Other	5.8	(4.1-8.0)	6.7	(4.8-8.9)	7.4	(5.8-9.3)	7.2	(5.6-9.1)

Note:

Data Source: Hawai'i YRBS

Table 20. Ever used hallucinogenics among public high school students by county, sex, grade, and race for years 2013-2017

	2013		2015		2017	
	%	95% CI	%	95% CI	%	95% CI
Overall						
Hawaii State	6.0	(5.1-7.1)	8.1	(6.8-9.4)	7.6	(6.3-8.9)
County						
Hawaii County	8.7	(6.4-11.4)	10.6	(7.9-13.9)	10.9	(8.8-13.3)
Honolulu County	5.0	(3.6-6.6)	7.3	(5.6-9.3)	6.3	(4.6-8.4)
Kauai County	7.6	(5.2-10.7)	8.2	(6.6-10.2)	8.6	(6.6-10.9)
Maui County	8.2	(6.1-10.6)	9.5	(7.7-11.5)	10.4	(8.3-12.8)
Sex						
Female	5.9	(4.5-7.4)	6.7	(5.1-8.7)	5.0	(3.8-6.4)
Male	5.8	(4.7-7.2)	8.8	(7.4-10.4)	9.1	(7.2-11.3)
Grade						
9th grade	5.0	(3.6-6.8)	5.6	(4.1-7.6)	6.7	(4.9-8.8)
10th grade	4.0	(2.7-5.7)	7.2	(5.3-9.6)	6.0	(4.2-8.3)
11th grade	8.1	(6.2-10.3)	8.2	(5.7-11.3)	7.2	(5.2-9.6)
12th grade	6.2	(4.3-8.7)	10.7	(8.1-13.8)	8.7	(6.7-11.2)
Race						
Black	-	-	-	-	-	-
Caucasian	10.0	(6.1-15.4)	10.7	(6.9-15.7)	11.4	(8.0-15.7)
Filipino	1.8	(0.9-3.4)	5.8	(4.1-7.9)	3.3	(1.8-5.6)
Japanese	4.8	(1.4-11.4)	7.6	(4.5-11.8)	2.5	(0.6-6.7)
Native Alaskan/ American Indian	-	-	-	-	-	-
Native Hawaiian	6.3	(4.5-8.5)	7.8	(6.2-9.7)	8.7	(6.8-10.9)
Other Asian	1.6	(0.3-4.7)	2.7	(1.1-5.4)	2.0	(0.4-6.2)
Other Pacific Islander	6.0	(2.3-12.4)	2.9	(1.2-5.7)	7.0	(3.2-13.0)
Other	8.3	(6.3-10.7)	9.0	(7.3-11.0)	8.3	(7.0-9.8)

Note:

Data Source: Hawai'i YRBS

Table 21. Ever used ecstasy among public high school students by county, sex, grade, and race for years 2011-2017

	2011		2013		2015		2017	
	%	95% CI	%	95% CI	%	95% CI	%	95% CI
Overall								
Hawaii State	9.0	(7.5-10.8)	8.0	(6.2-10.2)	8.0	(6.7-9.4)	6.0	(5.0-7.1)
County								
Hawaii County	-	-	8.2	(5.7-11.2)	9.7	(6.9-13.0)	7.2	(5.4-9.3)
Honolulu County	9.0	(6.8-11.6)	8.4	(5.7-11.8)	7.6	(5.7-9.7)	5.6	(4.1-7.3)
Kauai County	9.2	(6.9-11.9)	5.6	(3.7-8.1)	8.5	(6.4-11.1)	6.1	(4.6-8.0)
Maui County	6.6	(4.7-9.1)	7.0	(5.3-9.0)	8.1	(6.2-10.3)	7.0	(5.3-9.1)
Sex								
Female	9.0	(6.9-11.5)	7.0	(5.5-8.8)	6.8	(5.3-8.5)	4.4	(3.5-5.5)
Male	8.8	(7.1-10.8)	8.9	(6.2-12.3)	8.5	(6.9-10.4)	7.0	(5.2-9.3)
Grade								
9th grade	7.2	(5.0-9.9)	6.6	(4.5-9.3)	4.4	(3.1-6.2)	4.0	(2.7-5.7)
10th grade	6.5	(4.7-8.8)	5.1	(3.6-7.1)	7.8	(5.2-11.2)	5.1	(3.6-6.9)
11th grade	12.1	(8.6-16.5)	9.9	(7.0-13.5)	7.7	(5.1-10.9)	5.1	(3.8-6.7)
12th grade	10.5	(8.4-13.0)	10.1	(6.4-15.0)	11.0	(8.2-14.4)	9.6	(6.7-13.2)
Race								
Black	-	-	-	-	-	-	-	-
Caucasian	13.1	(10.0-16.9)	11.0	(8.5-13.9)	10.0	(6.9-13.9)	7.8	(4.7-11.9)
Filipino	6.7	(4.4-9.8)	3.7	(1.7-6.9)	4.4	(2.6-6.9)	3.2	(1.9-5.0)
Japanese	5.3	(1.8-11.5)	8.1	(3.3-16.2)	7.2	(3.8-12.1)	4.1	(1.0-11.0)
Native Alaskan/ American Indian	-	-	-	-	-	-	-	-
Native Hawaiian	8.1	(5.7-11.1)	9.8	(7.0-13.3)	8.5	(6.6-10.7)	7.5	(5.6-9.7)
Other Asian	6.8	(2.7-13.7)	1.6	(0.3-4.7)	3.6	(2.3-5.3)	2.7	(0.5-7.9)
Other Pacific Islander	4.4	(1.1-11.3)	6.0	(2.5-11.9)	3.3	(1.3-6.8)	4.3	(1.4-9.7)
Other	10.6	(8.2-13.5)	10.2	(7.9-12.9)	9.9	(8.0-12.0)	6.6	(5.2-8.1)

Note:

Data Source: Hawai'i YRBS

Table 22. Ever used heroin among public high school students by county, sex, grade, and race for years 2013-2017

	2013		2015		2017	
	%	95% CI	%	95% CI	%	95% CI
Overall						
Hawaii State	3.4	(2.7-4.3)	3.3	(2.7-4.1)	4.5	(3.5-5.7)
County						
Hawaii County	3.4	(2.3-4.8)	5.6	(3.5-8.4)	6.0	(4.2-8.3)
Honolulu County	3.5	(2.4-4.8)	2.7	(1.8-3.7)	3.9	(2.5-5.6)
Kauai County	2.3	(1.1-4.3)	4.9	(3.3-7.1)	5.0	(3.4-7.0)
Maui County	3.9	(2.5-5.8)	3.7	(2.6-5.3)	6.0	(4.0-8.5)
Sex						
Female	3.2	(2.0-4.9)	1.8	(1.2-2.5)	1.8	(1.2-2.6)
Male	3.3	(2.3-4.7)	4.4	(3.4-5.5)	6.2	(4.5-8.2)
Grade						
9th grade	3.2	(1.6-5.8)	2.8	(1.7-4.4)	5.0	(3.2-7.5)
10th grade	1.8	(0.9-3.2)	2.9	(1.7-4.5)	3.5	(2.0-5.7)
11th grade	4.2	(2.5-6.7)	3.0	(1.8-4.7)	2.7	(1.8-3.8)
12th grade	3.9	(2.2-6.3)	3.4	(2.1-5.2)	4.9	(3.1-7.4)
Race						
Black	-	-	-	-	-	-
Caucasian	4.6	(2.5-7.7)	1.9	(1.1-3.0)	3.9	(1.8-7.2)
Filipino	1.2	(0.3-2.9)	2.1	(1.0-3.6)	2.3	(1.2-4.0)
Japanese	4.9	(1.2-12.6)	2.6	(0.6-6.9)	1.3	(0.1-4.6)
Native Alaskan/ American Indian	-	-	-	-	-	-
Native Hawaiian	3.3	(2.1-4.9)	4.7	(3.3-6.5)	6.0	(4.2-8.3)
Other Asian	1.4	(0.1-5.5)	0.5	(0.0-2.3)	0.2	(0.0-0.9)
Other Pacific Islander	2.6	(0.6-7.2)	2.9	(1.0-6.2)	4.7	(1.2-11.9)
Other	3.7	(2.2-5.8)	3.1	(2.2-4.2)	4.0	(2.9-5.3)

Note:

Data Source: Hawai'i YRBS

Table 23. Ever used methamphetamines among public high school students by county, sex, grade, and race for years 2011-2017

	2011		2013		2015		2017	
	%	95% CI	%	95% CI	%	95% CI	%	95% CI
Overall								
Hawaii State	3.4	(2.5-4.4)	4.3	(3.3-5.5)	3.8	(3.0-4.7)	4.8	(3.5-6.3)
County								
Hawaii County	-	-	4.8	(3.3-6.9)	6.3	(4.1-9.3)	5.7	(4.1-7.7)
Honolulu County	2.3	(1.3-3.6)	4.2	(2.8-6.1)	3.1	(2.1-4.3)	4.3	(2.6-6.7)
Kauai County	5.2	(3.4-7.5)	3.2	(1.6-5.6)	5.2	(3.6-7.2)	5.4	(3.9-7.4)
Maui County	3.6	(2.3-5.4)	4.3	(2.7-6.4)	4.3	(3.0-5.9)	6.2	(4.0-8.9)
Sex								
Female	2.3	(1.5-3.4)	4.2	(3.0-5.7)	2.4	(1.6-3.5)	2.2	(1.4-3.2)
Male	4.2	(2.9-5.9)	3.9	(2.6-5.5)	4.6	(3.6-5.8)	6.6	(4.8-8.9)
Grade								
9th grade	3.3	(1.7-5.7)	3.8	(2.6-5.5)	3.2	(2.1-4.7)	4.7	(3.1-6.9)
10th grade	2.1	(1.3-3.2)	1.9	(1.1-3.1)	3.9	(2.7-5.5)	3.9	(2.1-6.4)
11th grade	4.1	(2.2-6.9)	5.5	(3.4-8.5)	3.3	(2.2-4.9)	2.8	(1.7-4.3)
12th grade	3.7	(2.1-6.0)	5.3	(3.2-8.2)	3.6	(2.0-6.0)	6.5	(3.9-10.0)
Race								
Black	-	-	-	-	-	-	-	-
Caucasian	5.3	(2.6-9.3)	6.4	(4.0-9.6)	2.6	(1.4-4.4)	4.9	(2.2-9.2)
Filipino	2.6	(1.2-4.9)	2.2	(1.0-4.2)	2.5	(1.4-4.1)	2.6	(1.3-4.7)
Japanese	1.2	(0.2-4.3)	3.5	(0.6-10.5)	2.3	(0.6-6.1)	4.0	(0.9-10.8)
Native Alaskan/ American Indian	-	-	-	-	-	-	-	-
Native Hawaiian	2.9	(1.7-4.6)	4.8	(3.2-7.0)	4.9	(3.7-6.5)	6.0	(4.3-8.0)
Other Asian	1.5	(0.1-5.9)	2.6	(0.9-5.8)	0.5	(0.0-2.1)	0.2	(0.0-0.9)
Other Pacific Islander	2.9	(0.6-8.4)	2.4	(0.7-5.6)	2.0	(0.6-5.0)	5.7	(1.9-12.5)
Other	3.0	(1.9-4.5)	4.2	(2.6-6.3)	4.8	(3.6-6.2)	3.6	(2.7-4.8)

Note:

Data Source: Hawai'i YRBS

Table 24. Ever used injectables among public high school students by county, sex, sexual orientation, grade, and race for years 2013-2017

	2013		2015		2017	
	%	95% CI	%	95% CI	%	95% CI
Overall						
Hawaii State	2.6	(2.0-3.2)	3.3	(2.7-4.1)	2.8	(2.3-3.5)
County						
Hawaii County	2.8	(1.9-4.0)	4.9	(3.3-7.1)	3.5	(2.3-5.0)
Honolulu County	2.5	(1.7-3.5)	3.0	(2.2-4.0)	2.4	(1.6-3.3)
Kauai County	2.0	(1.0-3.6)	3.5	(2.2-5.2)	4.6	(3.1-6.6)
Maui County	3.0	(1.9-4.5)	3.5	(2.3-5.1)	3.9	(2.4-5.9)
Sex						
Female	2.7	(1.9-3.8)	1.9	(1.2-2.9)	1.2	(0.8-1.8)
Male	2.1	(1.5-2.9)	4.5	(3.5-5.7)	4.0	(3.0-5.1)
Sexual Orientation						
Heterosexual	1.9	(1.4-2.6)	1.7	(1.3-2.2)	1.5	(1.2-1.9)
Lesbian, Gay, Bisexual	4.0	(1.5-8.7)	12.6	(8.7-17.3)	9.3	(6.0-13.7)
Not sure	10.9	(3.4-24.3)	6.3	(1.9-14.6)	6.8	(3.3-12.2)
Grade						
9th grade	3.3	(2.1-5.1)	2.9	(1.9-4.3)	2.8	(1.6-4.4)
10th grade	1.9	(1.1-3.1)	2.9	(1.9-4.2)	2.9	(1.6-4.7)
11th grade	2.0	(1.0-3.5)	3.4	(2.2-5.2)	1.9	(1.3-2.7)
12th grade	2.5	(1.2-4.7)	3.6	(2.1-5.7)	2.6	(1.6-3.9)
Race						
Black	-	-	-	-	-	-
Caucasian	3.3	(1.2-7.1)	2.0	(0.8-4.2)	1.9	(0.8-4.0)
Filipino	1.8	(0.8-3.6)	2.7	(1.6-4.4)	1.3	(0.6-2.5)
Japanese	1.2	(0.1-5.0)	2.5	(0.6-6.6)	1.7	(0.2-5.8)
Native Alaskan/ American Indian	-	-	-	-	-	-
Native Hawaiian	2.3	(1.5-3.4)	4.8	(3.4-6.5)	3.4	(2.4-4.6)
Other Asian	2.1	(0.4-6.0)	0.0	(NaN-NaN)	0.6	(0.0-2.2)
Other Pacific Islander	6.5	(2.4-13.9)	2.5	(0.8-5.9)	6.7	(3.1-12.3)
Other	3.1	(2.0-4.6)	3.5	(2.5-4.9)	3.1	(2.2-4.2)

Note:

Data Source: Hawai'i YRBS

Table 25. Ever used prescription drugs without a doctor’s prescription among public high school students by county, sex, sexual orientation, grade, and race for years 2011-2017

	2011		2013		2015		2017	
	%	95% CI	%	95% CI	%	95% CI	%	95% CI
Overall								
Hawaii State	14.3	(12.6-16.2)	12.9	(11.0-15.2)	12.3	(10.7-14.2)	12.2	(10.7-13.9)
County								
Hawaii County	-	-	15.2	(12.4-18.5)	14.4	(11.8-17.5)	15.5	(13.3-18.0)
Honolulu County	12.3	(9.8-15.2)	12.3	(9.3-15.7)	12.1	(9.7-14.9)	11.3	(9.2-13.8)
Kauai County	17.5	(14.0-21.6)	14.0	(11.0-17.4)	10.2	(8.2-12.5)	11.7	(9.6-14.0)
Maui County	13.6	(11.5-16.0)	13.6	(11.5-16.0)	12.2	(10.2-14.4)	13.6	(11.3-16.2)
Sex								
Female	14.5	(11.9-17.4)	14.2	(12.1-16.5)	11.3	(8.8-14.1)	10.7	(9.2-12.3)
Male	14.0	(11.8-16.6)	11.5	(9.0-14.5)	12.9	(11.4-14.6)	12.8	(10.4-15.5)
Sexual Orientation								
Heterosexual	13.1	(11.5-14.8)	11.6	(9.5-13.9)	9.9	(8.7-11.2)	9.6	(8.3-11.1)
Lesbian, Gay, Bisexual	30.0	(20.4-41.0)	26.5	(21.4-32.2)	26.6	(20.8-33.1)	27.0	(22.9-31.5)
Not sure	12.7	(6.0-22.7)	18.8	(9.1-32.4)	19.1	(11.2-29.4)	14.1	(9.9-19.3)
Grade								
9th grade	10.6	(8.0-13.7)	8.5	(6.3-11.3)	7.6	(5.2-10.6)	10.3	(8.0-13.0)
10th grade	11.8	(8.6-15.5)	11.3	(9.2-13.6)	11.5	(9.1-14.3)	10.9	(8.4-13.8)
11th grade	17.3	(13.2-22.1)	14.2	(11.6-17.1)	13.9	(10.3-18.2)	12.8	(10.6-15.3)
12th grade	18.4	(15.1-22.1)	18.2	(13.4-23.8)	16.5	(13.4-20.0)	13.8	(10.1-18.3)
Race								
Black	-	-	-	-	-	-	-	-
Caucasian	22.2	(18.5-26.3)	19.0	(15.0-23.6)	16.2	(12.7-20.1)	13.2	(9.5-17.7)
Filipino	9.3	(6.9-12.1)	7.2	(4.8-10.2)	7.7	(5.7-10.1)	7.1	(5.3-9.4)
Japanese	11.1	(6.2-18.0)	11.1	(5.4-19.8)	8.5	(5.5-12.5)	10.2	(3.1-23.1)
Native Alaskan/ American Indian	-	-	-	-	-	-	-	-
Native Hawaiian	14.2	(11.5-17.3)	16.5	(13.7-19.6)	14.8	(11.8-18.3)	14.1	(11.9-16.7)
Other Asian	9.8	(3.8-19.8)	2.4	(0.7-6.1)	7.0	(3.1-13.3)	5.2	(2.8-8.7)
Other Pacific Islander	10.0	(6.1-15.3)	7.5	(3.8-13.1)	4.5	(2.0-8.5)	11.7	(7.4-17.3)
Other	17.2	(14.1-20.6)	15.7	(12.6-19.3)	15.2	(12.5-18.2)	14.5	(12.4-16.8)

Note:

Data Source: Hawai‘i YRBS

Table 26. Ever used inhalants among public high school students by county, sex, grade, and race for years 2011-2015

	2011		2013		2015	
	%	95% CI	%	95% CI	%	95% CI
Overall						
Hawaii State	9.7	(8.4-11.1)	9.2	(7.8-10.9)	8.0	(7.0-9.1)
County						
Hawaii County	-	-	8.1	(6.1-10.4)	10.3	(8.2-12.8)
Honolulu County	9.3	(7.6-11.4)	9.8	(7.7-12.1)	7.4	(6.1-8.9)
Kauai County	10.0	(7.3-13.3)	7.9	(5.8-10.4)	7.4	(5.6-9.5)
Maui County	7.5	(5.9-9.4)	8.4	(6.2-11.0)	9.3	(7.6-11.3)
Sex						
Female	9.6	(8.2-11.2)	9.8	(8.1-11.8)	6.2	(5.1-7.4)
Male	9.5	(7.6-11.8)	8.2	(6.6-10.0)	9.4	(7.9-11.0)
Grade						
9th grade	10.3	(7.9-13.1)	9.4	(7.1-12.3)	6.6	(5.0-8.4)
10th grade	8.6	(6.4-11.1)	9.3	(7.1-11.9)	7.6	(5.9-9.6)
11th grade	9.9	(7.5-12.7)	9.0	(6.5-12.0)	8.6	(7.0-10.5)
12th grade	9.8	(7.0-13.2)	8.5	(6.0-11.7)	8.6	(6.2-11.6)
Race						
Black	-	-	-	-	-	-
Caucasian	12.3	(8.0-17.9)	10.6	(7.4-14.6)	9.8	(6.9-13.4)
Filipino	7.3	(4.9-10.3)	7.1	(4.5-10.4)	5.2	(3.6-7.3)
Japanese	6.4	(3.0-11.7)	3.9	(1.3-8.6)	4.1	(1.2-9.9)
Native Alaskan/ American Indian	-	-	-	-	-	-
Native Hawaiian	8.8	(6.4-11.9)	11.8	(9.2-14.9)	10.2	(8.0-12.6)
Other Asian	4.7	(2.5-8.1)	5.7	(2.5-10.7)	4.5	(2.1-8.4)
Other Pacific Islander	10.1	(6.7-14.4)	11.2	(6.5-17.5)	3.2	(1.5-6.0)
Other	13.0	(10.8-15.6)	10.2	(7.2-13.9)	8.9	(7.5-10.4)

Note:

Data Source: Hawai'i YRBS

Table 27. Offered, sold, or given drugs on school property in the past year among public high school students by county, sex, grade, and race for years 2011-2015

	2011		2013		2015	
	%	95% CI	%	95% CI	%	95% CI
Overall						
Hawaii State	31.7	(29.0-34.5)	31.2	(28.8-33.8)	25.4	(23.3-27.6)
County						
Hawaii County	-	-	31.6	(28.1-35.3)	26.8	(23.3-30.6)
Honolulu County	31.8	(28.0-35.8)	31.7	(28.2-35.4)	25.3	(22.3-28.5)
Kauai County	23.4	(20.0-27.1)	29.6	(25.8-33.5)	21.4	(18.9-24.1)
Maui County	28.9	(25.7-32.3)	29.0	(25.8-32.4)	26.5	(23.8-29.2)
Sex						
Female	28.1	(25.2-31.0)	28.4	(24.2-32.8)	24.9	(22.1-27.8)
Male	35.6	(32.1-39.2)	34.2	(31.5-36.9)	25.9	(23.6-28.3)
Grade						
9th grade	30.9	(26.6-35.4)	29.9	(25.3-34.7)	24.0	(20.7-27.7)
10th grade	30.5	(27.3-34.0)	27.3	(23.7-31.1)	27.6	(23.2-32.2)
11th grade	34.7	(29.3-40.4)	33.6	(28.2-39.4)	26.4	(22.3-30.8)
12th grade	30.9	(26.3-35.7)	34.5	(30.5-38.6)	23.5	(20.2-27.1)
Race						
Black	-	-	-	-	-	-
Caucasian	40.6	(35.2-46.1)	37.6	(29.3-46.4)	29.8	(23.8-36.4)
Filipino	32.1	(27.6-36.8)	24.0	(20.2-28.2)	23.0	(18.8-27.7)
Japanese	21.0	(14.7-28.5)	29.9	(19.0-42.8)	19.8	(15.3-25.0)
Native Alaskan/ American Indian	-	-	-	-	-	-
Native Hawaiian	26.6	(22.4-31.1)	33.3	(29.1-37.7)	26.9	(24.2-29.9)
Other Asian	19.7	(12.5-28.6)	26.5	(16.4-38.9)	18.4	(13.8-23.9)
Other Pacific Islander	36.4	(24.5-49.7)	34.8	(26.4-44.0)	30.0	(23.8-36.9)
Other	34.7	(30.6-39.0)	34.9	(31.9-37.9)	27.5	(24.9-30.3)

Note:

Data Source: Hawai'i YRBS

PRAMS Analysis

Table 28. Drank alcohol 3 months before pregnancy by age group and race for years 2009-2015

	2009		2010		2011		2012		2013		2014		2015		
	%	95% CI	%	95% CI	%	95% CI	%	95% CI	%	95% CI	%	95% CI	%	95% CI	
Overall															
Hawaii State	49.8	(46.5-53.1)	51.6	(48.3-54.9)	53.1	(49.7-56.4)	53.8	(50.4-57.2)	53.1	(49.4-56.7)	49.4	(45.5-53.4)	54.5	(50.6-58.4)	
County															
Hawaii County	56.6	(51.0-62.0)	53.7	(48.0-59.3)	50.8	(45.2-56.4)	55.7	(49.8-61.6)	50.9	(44.7-57.0)	53.5	(47.3-59.5)	52.6	(46.0-59.1)	
Honolulu County	48.0	(43.6-52.4)	50.2	(45.8-54.7)	52.2	(47.7-56.7)	52.8	(48.2-57.3)	53.0	(48.1-57.9)	47.5	(42.3-52.8)	54.1	(48.9-59.2)	
Kauai County	58.4	(51.3-65.3)	59.6	(52.6-66.4)	57.5	(50.2-64.6)	59.3	(51.7-66.5)	55.6	(49.0-62.1)	64.2	(57.3-70.7)	61.2	(53.9-68.1)	
Maui County	49.6	(44.4-54.8)	55.2	(49.8-60.6)	60.0	(54.7-65.1)	56.1	(50.3-61.7)	54.9	(48.7-60.9)	51.2	(44.1-58.3)	56.9	(50.1-63.5)	
Age Group															
<20 years of age	39.9	(29.4-51.2)	26.6	(16.5-38.9)	19.6	(12.1-29.2)	22.6	(11.4-37.7)	19.7	(10.4-32.2)	-	-	-	-	-
20-24 years of age	54.6	(47.5-61.5)	53.5	(46.5-60.4)	57.6	(50.3-64.6)	59.7	(51.8-67.2)	49.8	(41.8-57.8)	46.2	(37.5-55.1)	53.4	(44.2-62.3)	
25-34 years of age	51.9	(47.3-56.5)	55.2	(50.5-59.8)	55.8	(51.2-60.4)	55.8	(51.2-60.4)	58.3	(53.3-63.2)	53.0	(47.7-58.2)	59.3	(54.1-64.3)	
35+ years of age	43.0	(35.2-51.0)	47.3	(39.3-55.3)	49.5	(41.5-57.5)	51.1	(43.0-59.1)	50.8	(42.5-59.0)	46.0	(36.9-55.3)	52.5	(43.4-61.5)	
Race															
Black	56.0	(32.1-78.1)	-	-	-	-	-	-	-	-	-	-	44.7	(22.0-69.2)	
Caucasian	64.8	(58.0-71.3)	64.9	(57.9-71.5)	69.7	(63.0-75.8)	70.9	(63.8-77.3)	65.9	(58.3-73.0)	65.2	(56.9-72.9)	73.0	(65.4-79.7)	
Chinese	44.0	(27.3-61.8)	48.5	(30.9-66.3)	34.3	(19.1-52.3)	44.7	(30.1-60.1)	43.3	(26.1-61.8)	46.5	(26.9-67.0)	55.8	(37.3-73.2)	
Filipino	36.2	(28.9-44.0)	41.4	(33.7-49.4)	42.3	(34.6-50.3)	36.0	(28.4-44.2)	45.9	(36.8-55.3)	30.5	(22.3-39.7)	38.2	(29.3-47.6)	
Japanese	46.1	(35.0-57.5)	48.5	(37.1-59.9)	54.6	(43.4-65.4)	59.6	(47.3-71.1)	59.0	(46.6-70.6)	52.2	(38.5-65.5)	57.1	(43.1-70.4)	
Native Alaskan/ American Indian	-	-	-	-	-	-	-	-	-	-	-	-	-	-	
Native Hawaiian	51.2	(45.3-57.1)	57.3	(51.3-63.1)	56.2	(50.0-62.3)	57.1	(50.7-63.3)	52.7	(46.2-59.0)	49.2	(41.8-56.7)	50.9	(43.7-58.1)	
Other Asian	40.2	(22.3-60.2)	32.2	(15.5-53.0)	31.5	(15.2-52.0)	43.6	(25.9-62.7)	38.0	(16.7-63.3)	46.9	(24.6-70.1)	54.1	(32.1-75.0)	
Other Pacific Islander	27.7	(15.7-42.5)	24.7	(14.5-37.4)	26.7	(16.3-39.4)	31.2	(20.0-44.3)	-	-	30.4	(16.7-47.3)	30.0	(16.7-46.3)	
Other	60.7	(36.3-81.6)	-	-	-	-	-	-	-	-	-	-	-	-	

Note:

Data Source: Hawai'i PRAMS

Table 29. Drank alcohol during last 3 months of pregnancy by age group and race for years 2009-2015

	2009		2010		2011		2012		2013		2014		2015	
	%	95% CI	%	95% CI	%	95% CI	%	95% CI	%	95% CI	%	95% CI	%	95% CI
Overall														
Hawaii State	6.7	(5.2-8.4)	7.2	(5.6-9.0)	6.9	(5.3-8.7)	7.9	(6.2-9.9)	7.6	(5.9-9.6)	8.5	(6.5-10.8)	8.7	(6.7-11.0)
County														
Hawaii County	8.1	(5.4-11.5)	5.4	(3.3-8.4)	4.5	(2.5-7.3)	6.7	(4.1-10.1)	8.3	(5.4-12.2)	9.6	(6.4-13.7)	11.4	(7.8-16.0)
Honolulu County	6.0	(4.1-8.4)	6.9	(4.9-9.5)	7.0	(4.9-9.6)	7.6	(5.4-10.4)	7.0	(4.8-9.9)	7.8	(5.2-11.0)	7.8	(5.3-11.0)
Kauai County	10.1	(6.4-15.0)	11.3	(7.3-16.5)	11.0	(7.0-16.2)	13.6	(9.0-19.5)	10.2	(6.7-14.8)	14.1	(9.7-19.5)	8.3	(4.8-13.0)
Maui County	8.0	(5.4-11.1)	9.3	(6.5-12.9)	7.4	(4.9-10.5)	9.0	(6.2-12.6)	9.4	(6.1-13.5)	9.2	(5.7-14.0)	11.5	(7.7-16.3)
Age Group														
<20 years of age	-	-	-	-	-	-	-	-	-	-	-	-	-	-
20-24 years of age	5.3	(2.8-9.1)	3.6	(1.9-6.1)	-	-	8.3	(4.6-13.7)	-	-	-	-	9.6	(5.0-16.4)
25-34 years of age	7.4	(5.3-10.1)	9.3	(6.8-12.3)	7.7	(5.5-10.5)	7.1	(5.0-9.6)	7.4	(5.2-10.2)	9.5	(6.8-12.7)	10.0	(7.3-13.4)
35+ years of age	8.5	(4.8-13.7)	8.5	(4.7-13.9)	8.6	(4.7-14.2)	10.6	(6.2-16.6)	10.9	(6.6-16.6)	12.2	(6.8-19.7)	-	-
Race														
Black	-	-	-	-	-	-	-	-	-	-	-	-	-	-
Caucasian	9.9	(6.4-14.5)	11.2	(7.4-16.1)	13.4	(9.0-18.9)	12.6	(8.4-18.0)	10.5	(6.6-15.6)	11.0	(6.9-16.4)	14.2	(9.4-20.2)
Chinese	-	-	-	-	-	-	-	-	-	-	-	-	-	-
Filipino	2.7	(1.5-4.4)	7.5	(3.9-12.6)	-	-	8.2	(4.2-14.1)	-	-	-	-	9.0	(4.4-15.8)
Japanese	-	-	-	-	-	-	-	-	-	-	-	-	-	-
Native Alaskan/ American Indian	-	-	-	-	-	-	-	-	-	-	-	-	-	-
Native Hawaiian	5.8	(3.5-9.0)	6.8	(4.1-10.7)	3.6	(1.9-6.2)	7.1	(4.3-11.0)	7.4	(4.5-11.2)	7.7	(4.3-12.7)	7.2	(3.9-11.9)
Other Asian	-	-	-	-	-	-	-	-	-	-	-	-	-	-
Other Pacific Islander	-	-	-	-	-	-	-	-	-	-	-	-	-	-
Other	-	-	-	-	-	-	-	-	-	-	-	-	-	-

Note:

Data Source: Hawai'i PRAMS

Table 30. Binge drinking 3 months before pregnancy by age group and race for years 2009-2015

	2009		2010		2011		2012		2013		2014		2015	
	%	95% CI	%	95% CI	%	95% CI	%	95% CI	%	95% CI	%	95% CI	%	95% CI
Overall														
Hawaii State	23.1	(20.5-25.9)	25.2	(22.4-28.2)	24.0	(21.2-26.9)	19.8	(17.1-22.7)	18.9	(16.1-21.9)	16.6	(13.9-19.5)	19.2	(16.2-22.4)
County														
Hawaii County	29.1	(24.2-34.4)	28.4	(23.5-33.7)	28.1	(23.2-33.4)	21.6	(17.0-26.8)	18.1	(13.8-23.0)	19.1	(14.6-24.3)	17.7	(13.1-23.1)
Honolulu County	21.3	(17.9-25.2)	23.8	(20.1-27.7)	21.8	(18.3-25.7)	19.3	(15.8-23.3)	18.4	(14.8-22.5)	14.9	(11.4-18.9)	19.3	(15.4-23.7)
Kauai County	29.9	(23.6-36.7)	27.5	(21.5-34.2)	31.7	(25.2-38.7)	21.2	(15.5-28.0)	24.5	(19.1-30.5)	23.7	(18.0-30.1)	18.0	(12.8-24.3)
Maui County	24.6	(20.3-29.3)	30.4	(25.5-35.6)	29.9	(25.3-34.9)	19.9	(15.6-24.8)	20.6	(15.9-26.0)	21.8	(16.4-28.1)	20.4	(15.4-26.2)
Age Group														
<20 years of age	17.3	(9.8-27.2)	13.4	(7.0-22.7)	13.9	(7.5-22.6)	-	-	-	-	-	-	-	-
20-24 years of age	29.7	(23.7-36.2)	30.9	(24.8-37.5)	30.6	(24.2-37.5)	23.1	(16.8-30.4)	23.3	(17.0-30.7)	21.4	(14.9-29.2)	20.4	(13.7-28.7)
25-34 years of age	25.0	(21.2-29.1)	28.0	(24.0-32.4)	25.9	(22.1-30.1)	22.4	(18.6-26.4)	20.6	(16.7-24.9)	17.4	(13.8-21.5)	21.3	(17.3-25.9)
35+ years of age	12.2	(7.8-18.1)	13.6	(9.0-19.5)	12.0	(7.9-17.1)	11.0	(6.7-16.7)	12.3	(7.7-18.3)	9.9	(5.3-16.3)	15.4	(9.6-23.0)
Race														
Black	-	-	-	-	40.1	(17.7-66.1)	-	-	-	-	-	-	-	-
Caucasian	31.0	(25.0-37.5)	29.0	(22.9-35.6)	26.2	(20.5-32.6)	26.5	(20.2-33.6)	16.1	(11.3-22.0)	20.3	(14.4-27.3)	20.9	(14.9-28.1)
Chinese	-	-	-	-	-	-	-	-	-	-	-	-	-	-
Filipino	13.0	(8.3-19.1)	19.5	(13.5-26.7)	17.2	(11.6-24.0)	14.1	(8.9-20.8)	13.4	(7.8-21.0)	-	-	14.0	(8.4-21.5)
Japanese	19.5	(11.5-29.9)	16.5	(9.6-25.6)	22.6	(14.0-33.2)	-	-	25.9	(15.4-38.8)	-	-	19.8	(10.3-32.8)
Native Alaskan/ American Indian	-	-	-	-	-	-	-	-	-	-	-	-	-	-
Native Hawaiian	27.2	(22.3-32.5)	30.4	(25.2-36.0)	30.8	(25.5-36.6)	27.5	(21.9-33.7)	23.6	(18.5-29.4)	21.4	(15.8-27.9)	22.0	(16.3-28.7)
Other Asian	-	-	-	-	-	-	-	-	-	-	-	-	-	-
Other Pacific Islander	-	-	18.5	(9.6-30.7)	16.6	(8.5-28.1)	14.2	(6.9-24.7)	-	-	-	-	-	-
Other	-	-	-	-	-	-	-	-	-	-	-	-	-	-

Note:

Data Source: Hawai'i PRAMS

Table 31. Illicit drug use 1 month before pregnancy by age group and race for years 2009-2015

	2009		2010		2011		2012		2013		2014		2015	
	%	95% CI	%	95% CI	%	95% CI	%	95% CI	%	95% CI	%	95% CI	%	95% CI
Overall														
Hawaii State	7.2	(5.7-9.0)	6.1	(4.6-7.8)	6.3	(4.9-8.0)	6.7	(5.1-8.5)	7.4	(5.7-9.4)	5.3	(3.9-7.0)	5.4	(3.9-7.4)
County														
Hawaii County	11.6	(8.3-15.7)	6.9	(4.4-10.3)	11.4	(8.0-15.5)	7.1	(4.5-10.5)	10.5	(7.1-14.8)	9.3	(6.2-13.2)	6.9	(4.0-11.0)
Honolulu County	5.6	(3.7-8.1)	5.0	(3.2-7.3)	4.4	(2.8-6.7)	5.9	(3.9-8.5)	5.8	(3.7-8.7)	3.3	(1.7-5.6)	4.4	(2.6-7.1)
Kauai County	10.0	(6.3-15.0)	9.8	(6.1-14.8)	8.9	(5.2-14.2)	8.7	(4.9-13.9)	11.5	(7.6-16.4)	10.6	(6.8-15.7)	9.6	(5.7-14.9)
Maui County	10.6	(7.6-14.1)	10.9	(7.8-14.8)	11.8	(8.7-15.6)	10.5	(7.2-14.6)	12.0	(8.3-16.5)	11.5	(7.5-16.8)	8.7	(5.2-13.4)
Age Group														
<20 years of age	12.9	(6.9-21.5)	-	-	-	-	24.8	(12.3-41.3)	-	-	-	-	-	-
20-24 years of age	9.1	(5.6-13.8)	9.8	(6.1-14.7)	8.9	(5.8-13.0)	8.8	(5.3-13.6)	9.4	(5.6-14.6)	5.9	(3.1-10.1)	-	-
25-34 years of age	6.1	(4.2-8.5)	4.8	(3.2-7.0)	5.6	(3.8-7.9)	5.4	(3.5-7.7)	6.5	(4.3-9.4)	6.6	(4.5-9.2)	5.8	(3.8-8.5)
35+ years of age	-	-	-	-	-	-	-	-	-	-	-	-	-	-
Race														
Black	-	-	-	-	-	-	-	-	-	-	-	-	-	-
Caucasian	9.5	(6.3-13.6)	8.3	(5.2-12.4)	9.2	(5.8-13.5)	6.5	(3.8-10.2)	8.0	(4.8-12.4)	7.5	(4.5-11.6)	8.3	(4.7-13.4)
Chinese	-	-	-	-	-	-	-	-	-	-	-	-	-	-
Filipino	-	-	-	-	-	-	-	-	-	-	-	-	-	-
Japanese	-	-	-	-	-	-	-	-	-	-	-	-	-	-
Native Alaskan/ American Indian	-	-	-	-	-	-	-	-	-	-	-	-	-	-
Native Hawaiian	9.9	(6.7-14.0)	6.7	(4.3-10.0)	8.0	(5.4-11.4)	10.7	(7.0-15.4)	10.7	(7.2-15.1)	6.6	(3.8-10.4)	5.8	(3.1-9.7)
Other Asian	-	-	-	-	-	-	-	-	-	-	-	-	-	-
Other Pacific Islander	-	-	-	-	-	-	-	-	-	-	-	-	-	-
Other	-	-	-	-	-	-	-	-	-	-	-	-	-	-

Note:

Data Source: Hawai'i PRAMS

2019 Hawai'i State Epidemiologic Profile County Fact Sheet

Table 1. 30-day current drinking (Adults who have had at least one drink of alcohol within the past 30 days)	2011	2017	Change from 2011 to 2017
Hawai'i County	56.1%	50.9%	Decreased
Honolulu County	52.0%	51.2%	Decreased
Kaua'i County	55.4%	55.2%	Decreased
Maui County	53.8%	53.4%	Decreased
State of Hawai'i ¹	53.1%	51.6%	Decreased

Table 2. 30-day current drinking age-adjusted (Adults who have had at least one drink of alcohol within the past 30 days)	2011	2017	Change from 2011 to 2017
Hawai'i County	57.0%	51.9%	Decreased
Honolulu County	53.1%	52.3%	Decreased
Kaua'i County	56.3%	57.7%	Increased
Maui County	54.6%	53.6%	Decreased
State of Hawai'i ¹	54.2%	52.7%	Decreased

Table 3. 30-day binge drinking (Men having five or more drinks on one occasion and women having four or more drinks on one occasion)	2011	2017	Change from 2011 to 2017
Hawai'i County	22.5%	19.0%	Decreased
Honolulu County	21.3%	19.0%	Decreased
Kaua'i County	17.7%	21.8%	Increased
Maui County	22.6%	20.5%	Decreased
State of Hawai'i ¹	21.5%	19.5%	Decreased

Table 4. 30-day binge drinking age-adjusted (Men having five or more drinks on one occasion and women having four or more drinks on one occasion)	2011	2017	Change from 2011 to 2017
Hawai'i County	23.2%	20.8%	Decreased
Honolulu County	22.4%	20.0%	Decreased
Kaua'i County	18.7%	24.6%	Increased
Maui County	23.5%	21.8%	Decreased
State of Hawai'i ¹	22.7%	20.7%	Decreased

¹ Excludes Kalawao county.

Data source: Hawai'i State Epidemiologic Outcomes Workgroup (2019). 2019 Hawai'i State Epidemiologic Profile: Selected Youth and Adult Alcohol Indicators. Honolulu, HI.

Suggested citation: Hawai'i State Epidemiologic Outcomes Workgroup. 2019 Hawai'i State Epidemiologic Profile Fact Sheet. September 30, 2020.

Corresponding e-mail: phac+uhseow@hawaii.edu

Updated 1/15/2021



Table 5. Prescription drug overuse (Adults who ever used pain medications more frequently or in higher doses than prescribed by doctor (among those with Rx))	2015	2017	Change from 2015 to 2017
Hawai'i County	4.9%	6.9%	Increased
Honolulu County	3.9%	3.9%	No Change
Kaua'i County	5.6%	5.4%	Decreased
Maui County	7.3%	4.8%	Decreased
State of Hawai'i ¹	4.6%	4.5%	Decreased

Table 6. Prescription drug overuse (Adults who ever used pain medications more frequently or in higher doses than prescribed by doctor (age-adjusted))	2015	2017	Change from 2015 to 2017
Hawai'i County	5.6%	7.5%	Increased
Honolulu County	4.0%	3.9%	Decreased
Kaua'i County	5.5%	5.7%	Increased
Maui County	7.8%	5.2%	Decreased
State of Hawai'i ¹	4.7%	4.7%	No Change

Table 11. Ever drank alcohol among public high school students	2013	2017	Change from 2013 to 2017
Hawai'i County	60.5%	58.7%	Decreased
Honolulu County	49.3%	45.9%	Decreased
Kaua'i County	57.0%	51.4%	Decreased
Maui County	58.7%	54.7%	Decreased
State of Hawai'i ¹	52.5%	49.0%	Decreased

Table 12. Current alcohol use among public high school students	2013	2017	Change from 2013 to 2017
Hawai'i County	31.7%	32.1%	Increased
Honolulu County	22.6%	21.0%	Decreased
Kaua'i County	26.4%	30.1%	Increased
Maui County	30.9%	32.8%	Increased
State of Hawai'i ¹	25.2%	24.5%	Decreased

¹ Excludes Kalawao county.

Data source: Hawai'i State Epidemiologic Outcomes Workgroup (2019). 2019 Hawai'i State Epidemiologic Profile: Selected Youth and Adult Alcohol Indicators. Honolulu, HI.

Suggested citation: Hawai'i State Epidemiologic Outcomes Workgroup. 2019 Hawai'i State Epidemiologic Profile Fact Sheet. September 30, 2020.

Corresponding e-mail: phac+uhseow@hawaii.edu

Updated 1/15/2021



Table 13. Current binge drinking among public high school students	2013	2015	Change from 2013 to 2015
Hawai'i County	15.9%	16.0%	Increased
Honolulu County	11.3%	12.4%	Increased
Kaua'i County	15.3%	14.1%	Decreased
Maui County	15.9%	16.1%	Increased
State of Hawai'i ¹	12.7%	13.4%	Increased

Table 14. Consumed alcohol before age 13 among public high school students	2013	2017	Change from 2013 to 2017
Hawai'i County	22.9%	20.5%	Decreased
Honolulu County	16.3%	15.4%	Decreased
Kaua'i County	18.1%	17.8%	Decreased
Maui County	17.7%	19.6%	Increased
State of Hawai'i ¹	17.5%	16.8%	Decreased

Table 15. Ridden in a car with someone, including self, who was high or had been using alcohol or drugs in the past 30 days among public high school students	2013	2017	Change from 2013 to 2017
Hawai'i County	26.6%	23.6%	Decreased
Honolulu County	20.2%	18.8%	Decreased
Kaua'i County	29.8%	24.5%	Decreased
Maui County	30.6%	25.6%	Decreased
State of Hawai'i ¹	23.0%	20.6%	Decreased

Table 16. Current marijuana use among public high school students	2013	2017	Change from 2013 to 2017
Hawai'i County	23.6%	24.1%	Increased
Honolulu County	16.5%	15.8%	Decreased
Kaua'i County	22.7%	20.9%	Decreased
Maui County	24.6%	23.1%	Decreased
State of Hawai'i ¹	18.9%	18.1%	Decreased

¹ Excludes Kalawao county.

Data source: Hawai'i State Epidemiologic Outcomes Workgroup (2019). 2019 Hawai'i State Epidemiologic Profile: Selected Youth and Adult Alcohol Indicators. Honolulu, HI.

Suggested citation: Hawai'i State Epidemiologic Outcomes Workgroup. 2019 Hawai'i State Epidemiologic Profile Fact Sheet. September 30, 2020.

Corresponding e-mail: phac+uhseow@hawaii.edu

Updated 1/15/2021



Table 17. Marijuana use before age 13 among public high school students	2013	2017	Change from 2013 to 2017
Hawai'i County	14.5%	14.9%	Increased
Honolulu County	9.0%	7.3%	Decreased
Kaua'i County	12.5%	9.8%	Decreased
Maui County	12.4%	12.3%	Decreased
State of Hawai'i ¹	10.4%	9.1%	Decreased

Table 18. Ever used marijuana among public high school students	2013	2017	Change from 2013 to 2017
Hawai'i County	42.4%	41.6%	Decreased
Honolulu County	31.9%	27.5%	Decreased
Kaua'i County	36.0%	34.2%	Decreased
Maui County	42.5%	37.9%	Decreased
State of Hawai'i ¹	34.9%	31.1%	Decreased

Table 19. Ever used cocaine among public high school students	2013	2017	Change from 2013 to 2017
Hawai'i County	7.5%	7.5%	No Change
Honolulu County	6.3%	6.6%	Increased
Kaua'i County	7.1%	8.5%	Increased
Maui County	6.3%	8.7%	Increased
State of Hawai'i ¹	6.5%	7.1%	Increased

Table 20. Ever used hallucinogenics among public high school students	2013	2017	Change from 2013 to 2017
Hawai'i County	8.7%	10.9%	Increased
Honolulu County	5.0%	6.3%	Increased
Kaua'i County	7.6%	8.6%	Increased
Maui County	8.2%	10.4%	Increased
State of Hawai'i ¹	6.0%	7.6%	Increased

¹ Excludes Kalawao county.

Data source: Hawai'i State Epidemiologic Outcomes Workgroup (2019). 2019 Hawai'i State Epidemiologic Profile: Selected Youth and Adult Alcohol Indicators. Honolulu, HI.

Suggested citation: Hawai'i State Epidemiologic Outcomes Workgroup. 2019 Hawai'i State Epidemiologic Profile Fact Sheet. September 30, 2020.

Corresponding e-mail: phac+uhseow@hawaii.edu

Updated 1/15/2021



Table 21. Ever used ecstasy among public high school students	2013	2017	Change from 2013 to 2017
Hawai'i County	8.2%	7.2%	Decreased
Honolulu County	8.4%	5.6%	Decreased
Kaua'i County	5.6%	6.1%	Increased
Maui County	7.0%	7.0%	No Change
State of Hawai'i ¹	8.0%	6.0%	Decreased

Table 22. Ever used heroin among public high school students	2013	2017	Change from 2013 to 2017
Hawai'i County	3.4%	6.0%	Increased
Honolulu County	3.5%	3.9%	Increased
Kaua'i County	2.3%	5.0%	Increased
Maui County	3.9%	6.0%	Increased
State of Hawai'i ¹	3.4%	4.5%	Increased

Table 23. Ever used methamphetamines among public high school students	2013	2017	Change from 2013 to 2017
Hawai'i County	4.8%	5.7%	Increased
Honolulu County	4.2%	4.3%	Increased
Kaua'i County	3.2%	5.4%	Increased
Maui County	4.3%	6.2%	Increased
State of Hawai'i ¹	4.3%	4.8%	Increased

Table 24. Ever used injectables among public high school students	2013	2017	Change from 2013 to 2017
Hawai'i County	2.8%	3.5%	Increased
Honolulu County	2.5%	2.4%	Decreased
Kaua'i County	2.0%	4.6%	Increased
Maui County	3.0%	3.9%	Increased
State of Hawai'i ¹	2.6%	2.8%	Increased

¹ Excludes Kalawao county.

Data source: Hawai'i State Epidemiologic Outcomes Workgroup (2019). 2019 Hawai'i State Epidemiologic Profile: Selected Youth and Adult Alcohol Indicators. Honolulu, HI.

Suggested citation: Hawai'i State Epidemiologic Outcomes Workgroup. 2019 Hawai'i State Epidemiologic Profile Fact Sheet. September 30, 2020.

Corresponding e-mail: phac+uhseow@hawaii.edu

Updated 1/15/2021



Table 25. Ever used prescription drugs without a doctor's prescription among public high school students	2013	2017	Change from 2013 to 2017
Hawai'i County	15.2%	15.5%	Increased
Honolulu County	12.3%	11.3%	Decreased
Kaua'i County	14.0%	11.7%	Decreased
Maui County	13.6%	13.6%	No Change
State of Hawai'i ¹	12.9%	12.2%	Decreased

Table 26. Ever used inhalants among public high school students	2013	2015	Change from 2013 to 2015
Hawai'i County	8.1%	10.3%	Increased
Honolulu County	9.8%	7.4%	Decreased
Kaua'i County	7.9%	7.4%	Decreased
Maui County	8.4%	9.3%	Increased
State of Hawai'i ¹	9.2%	8.0%	Decreased

Table 27. Offered, sold, or given drugs on school property in the past year among public high school students	2013	2015	Change from 2013 to 2015
Hawai'i County	31.6%	26.8%	Decreased
Honolulu County	31.7%	25.3%	Decreased
Kaua'i County	29.6%	21.4%	Decreased
Maui County	29.0%	26.5%	Decreased
State of Hawai'i ¹	31.2%	25.4%	Decreased

Table 28. Drank alcohol 3 months before pregnancy	2009	2015	Change from 2009 to 2015
Hawai'i County	56.6%	52.6%	Decreased
Honolulu County	48.0%	54.1%	Increased
Kaua'i County	58.4%	61.2%	Increased
Maui County	49.6%	56.9%	Increased
State of Hawai'i ¹	49.8%	54.5%	Increased

¹ Excludes Kalawao county.

Data source: Hawai'i State Epidemiologic Outcomes Workgroup (2019). 2019 Hawai'i State Epidemiologic Profile: Selected Youth and Adult Alcohol Indicators. Honolulu, HI.

Suggested citation: Hawai'i State Epidemiologic Outcomes Workgroup. 2019 Hawai'i State Epidemiologic Profile Fact Sheet. September 30, 2020.

Corresponding e-mail: phac+uhseow@hawaii.edu

Updated 1/15/2021



Table 29. Drank alcohol during last 3 months of pregnancy	2009	2015	Change from 2009 to 2015
Hawai'i County	8.1%	11.4%	Increased
Honolulu County	6.0%	7.8%	Increased
Kaua'i County	10.1%	8.3%	Decreased
Maui County	8.0%	11.5%	Increased
State of Hawai'i ¹	6.7%	8.7%	Increased

Table 30. Binge drinking 3 months before pregnancy	2009	2015	Change from 2009 to 2015
Hawai'i County	29.1%	17.7%	Decreased
Honolulu County	21.3%	19.3%	Decreased
Kaua'i County	29.9%	18.0%	Decreased
Maui County	24.6%	20.4%	Decreased
State of Hawai'i ¹	23.1%	19.2%	Decreased

Table 31. Illicit drug use 1 month before pregnancy	2009	2015	Change from 2009 to 2015
Hawai'i County	11.6%	6.9%	Decreased
Honolulu County	5.6%	4.4%	Decreased
Kaua'i County	10.0%	9.6%	Decreased
Maui County	10.6%	8.7%	Decreased
State of Hawai'i ¹	7.2%	5.4%	Decreased

¹ Excludes Kalawao county.

Data source: Hawai'i State Epidemiologic Outcomes Workgroup (2019). 2019 Hawai'i State Epidemiologic Profile: Selected Youth and Adult Alcohol Indicators. Honolulu, HI.

Suggested citation: Hawai'i State Epidemiologic Outcomes Workgroup. 2019 Hawai'i State Epidemiologic Profile Fact Sheet. September 30, 2020.

Corresponding e-mail: phac+uhseow@hawaii.edu

Updated 1/15/2021



2019 Hawai'i State Epidemiologic Profile

Fact Sheet for Youth and Adult Alcohol and Substance Use Indicators



Adults



4.5% of adults overused a prescription drug in 2017

An average of 130 Americans die every day from an opioid overdose

Excessive alcohol use can increase risk of stroke, liver cirrhosis, alcoholic hepatitis, cancer, and risk taking behaviors



51.6% of adults drank alcohol in the past 30 days (2017)

Public High School Students

4.8% of public high school students reported using methamphetamines in 2017, up from 3.4% in 2011

Risks of Underage Drinking

- Affects development and growth
- Often occurs with other risky behaviors
- Contributes to adult health problems (heart disease, high blood pressure, and sleep disorders)

49% of public high school students in the state drank alcohol at least once in 2017

Compared to:

58.7% in Hawai'i County
45.9% in Honolulu County
51.4% in Kaua'i County
54.7% in Maui County

Expectant Mothers

Dangers of Drinking During Pregnancy

- Miscarriage and stillbirth
- Lifelong physical, behavioral, and intellectual disabilities

5.4% of women used illicit drugs one month before pregnancy in 2015, down from 7.2% in 2009

8.7% of women surveyed drank alcohol in the last 3 months of pregnancy in 2015, up from 6.7% in 2009



2019 Hawai'i County Epidemiologic Profile



Fact Sheet for Youth and Adult Alcohol
and Substance Use Indicators

Adults



6.9%
of adults
overused a
prescription
drug in 2017

An average of 130 Americans die
every day from an opioid
overdose

Excessive alcohol use can
increase risk of stroke, liver
cirrhosis, alcoholic hepatitis,
cancer, and risk taking behaviors



50.9%
of adults drank
alcohol in the
past 30 days
(2017)

Public High School Students

5.7% of public high
school students
reported using
methamphetamines
in 2017, up from
4.8% in 2013

Risks of Underage Drinking

- Affects development and growth
- Often occurs with other risky behaviors
- Contributes to adult health problems (heart disease, high blood pressure, and sleep disorders)

58.7% of public high
school students in
the county drank
alcohol at least
once in 2017

Compared to:

49% in Hawai'i State
45.9% in Honolulu County
51.4% in Kaua'i County
54.7% in Maui County

Expectant Mothers

Dangers of Drinking During Pregnancy

- Miscarriage and stillbirth
- Lifelong physical, behavioral, and intellectual disabilities

6.9% of women
used illicit drugs
one month before
pregnancy in
2015, down from
11.6% in 2009

11.4% of women
surveyed drank
alcohol in the last
3 months of
pregnancy in 2015,
up from 8.1% in
2009



2019 Honolulu County Epidemiologic Profile

Fact Sheet for Youth and Adult Alcohol and Substance Use Indicators



Adults



3.9% of adults overused a prescription drug in 2017

An average of 130 Americans die every day from an opioid overdose

Excessive alcohol use can increase risk of stroke, liver cirrhosis, alcoholic hepatitis, cancer, and risk taking behaviors



51.2% of adults drank alcohol in the past 30 days (2017)

Public High School Students

4.3% of public high school students reported using methamphetamines in 2017, up from 2.3% in 2011

Risks of Underage Drinking

- Affects development and growth
- Often occurs with other risky behaviors
- Contributes to adult health problems (heart disease, high blood pressure, and sleep disorders)

45.9% of public high school students in the county drank alcohol at least once in 2017

Compared to:
49% in Hawai'i State
58.7% in Hawai'i County
51.4% in Kaua'i County
54.7% in Maui County

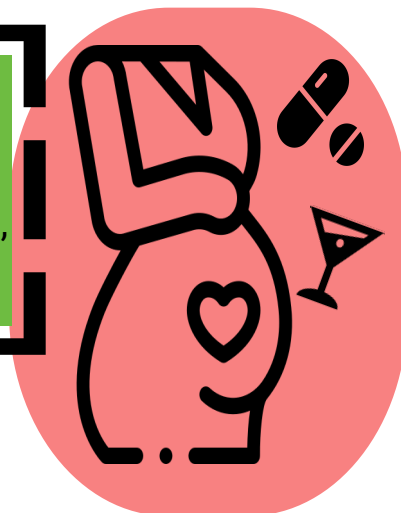
Expectant Mothers

Dangers of Drinking During Pregnancy

- Miscarriage and stillbirth
- Lifelong physical, behavioral, and intellectual disabilities

4.4% of women used illicit drugs one month before pregnancy in 2015, down from 5.6% in 2009

7.8% of women surveyed drank alcohol in the last 3 months of pregnancy in 2015, up from 6% in 2009



Youth Risk Behavior Survey (YRBS) 2017, 2015, 2013, 2011, Behavioral Risk Factor Surveillance System (BRFSS) 2017, Pregnancy Risk Assessment Monitoring (PRAMS) 2015, 2009). CDC Fetal Alcohol Spectrum Disorders (FASDS): "Alcohol Use and Pregnancy" (2020) and "Teen Substance Use & Risks (2020). Substance Abuse and Mental Health Services Administration (SAMHSA): "Find Help: ATOD" (2020). For more information on substance and alcohol use and full citations, please email phac+uhseow@hawaii.edu Edited: 10/16/20 Icons made by photo3idea_studio, Freepik, Kiranshastry, and Digital from www.flaticon.com is licensed by CC 3.0 BY



2019 Kaua'i County Epidemiologic Profile

Fact Sheet for Youth and Adult Alcohol and Substance Use Indicators



Adults



5.4% of adults overused a prescription drug in 2017

An average of 130 Americans die every day from an opioid overdose

Excessive alcohol use can increase risk of stroke, liver cirrhosis, alcoholic hepatitis, cancer, and risk taking behaviors



55.2% of adults drank alcohol in the past 30 days (2017)

Public High School Students

5.4% of public high school students reported using methamphetamines in 2017, up from 5.2% in 2011

Risks of Underage Drinking

- Affects development and growth
- Often occurs with other risky behaviors
- Contributes to adult health problems (heart disease, high blood pressure, and sleep disorders)

51.4% of public high school students in the county drank alcohol at least once in 2017

Compared to:

49% in Hawai'i State
58.7% in Hawai'i County
45.9% in Honolulu County
54.7% in Maui County

Expectant Mothers

Dangers of Drinking During Pregnancy

- Miscarriage and stillbirth
- Lifelong physical, behavioral, and intellectual disabilities

9.6% of women used illicit drugs one month before pregnancy in 2015, down from 10.1% in 2009

8.3% of women surveyed drank alcohol in the last 3 months of pregnancy in 2015, down from 10.1% in 2009



2019 Maui County Epidemiologic Profile

Fact Sheet for Youth and Adult Alcohol and Substance Use Indicators



Adults



4.8% of adults overused a prescription drug in 2017

An average of 130 Americans die every day from an opioid overdose

Excessive alcohol use can increase risk of stroke, liver cirrhosis, alcoholic hepatitis, cancer, and risk taking behaviors



53.4% of adults drank alcohol in the past 30 days (2017)

Public High School Students

6.2% of public high school students reported using methamphetamines in 2017, up from 3.6% in 2011

Risks of Underage Drinking

- Affects development and growth
- Often occurs with other risky behaviors
- Contributes to adult health problems (heart disease, high blood pressure, and sleep disorders)

54.7% of public high school students in the county drank alcohol at least once in 2017

Compared to:

49% in Hawai'i State
58.7% in Hawai'i County
45.9% in Honolulu County
51.4% in Kaua'i County

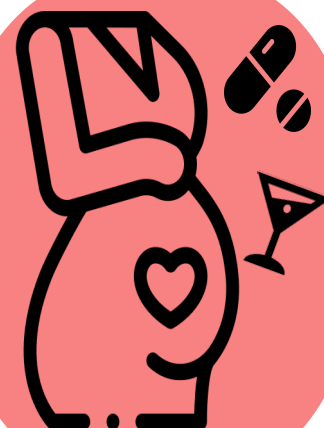
Expectant Mothers

Dangers of Drinking During Pregnancy

- Miscarriage and stillbirth
- Lifelong physical, behavioral, and intellectual disabilities

8.7% of women used illicit drugs one month before pregnancy in 2015, down from 10.6% in 2009

11.5% of women surveyed drank alcohol in the last 3 months of pregnancy in 2015, up from 8% in 2009



Appendix G. 2019 Hawai'i State Epidemiologic Profile Chartbook

Please see separate Excel file.