

Businesses: Lithium-ion Battery Disposal (Small and Medium Formats)

Information Sheet for Businesses

Risks of improper lithium-ion (Li-ion) battery disposal

If lithium-ion batteries are improperly handled during disposal or transport, they can become damaged and turn into a fire hazard. Damaged batteries can ignite and explode, which releases toxic chemicals and causes dangerous fires. For information on lithium-ion battery fire safety information, please see the Department of Health's (DOH) Hazard Evaluation and Emergency Response (HEER) Office website. Click on [this link to access the HEER Office's website \(opens in a new tab\)](#).

Where are lithium-ion batteries commonly found?

Lithium-ion batteries are commonly contained in rechargeable devices. Small and medium format lithium-ion batteries, as defined by the EPA, are 0-11 pounds and 0-300 watt-hours, and 11-25 pounds and 300-2000 watt-hours, respectively. Common devices with lithium-ion batteries include:

- Cell phones
- Power tools
- Digital cameras
- Laptops and tablets
- Portable chargers
- Electric toothbrushes
- Children's toys
- E-cigarettes/vapes
- Cordless or wireless appliances
- Tablets and e-readers
- Electric scooters and bikes

(Note: This list is not exhaustive; check labels on devices to see if they contain lithium-ion batteries. Additionally, this information and list do not apply to large format lithium-ion batteries like ones contained in electric vehicles and photovoltaic solar panel systems.)



Image 1: Lithium-ion battery shipping label used for packages containing Lithium-ion batteries. Diagram of batteries in the middle and red border with white hatch marks around the label.

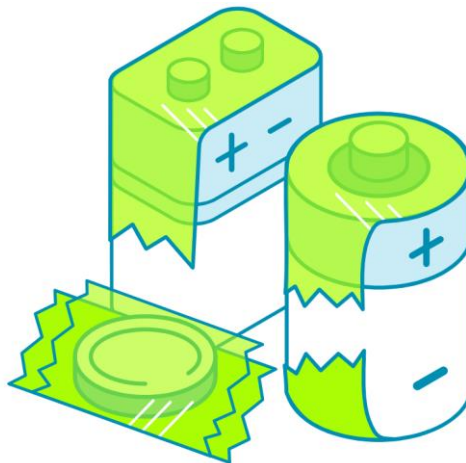


Image 2: Infographic showing proper taping of Lithium-ion batteries. For rechargeable Lithium-ion batteries, cover all metal parts. For power tools, cover all exposed metal areas.

How should I properly dispose of my lithium-ion batteries?

To safely dispose of lithium-ion batteries and products, businesses should seek out authorized handling facilities and/or transportation (resources are suggested below). Businesses are mandated by law to properly dispose of their hazardous waste, including lithium-ion batteries, which are considered as universal waste. In addition to the recommended collection sites listed below, the DOH maintains a list of universal waste collectors. Follow this [link to access the website where the list of universal waste collectors is posted](#). For inquiries, please call the DOH's Hazardous Waste section at (808) 586-4226.

Electronic Devices

Electronic devices (e.g. computer, laptop, televisions, and video game monitors with screens ≥ 9 inches) that contain embedded, rechargeable lithium-ion batteries should be disposed at e-waste collection sites or via the product manufacturer's recycling plan. Please see the DOH's e-waste website for e-waste disposal. The DOH's e-waste website [can be accessed at this link](#). In cases where e-waste is considered hazardous waste, businesses' disposal requirements are subject to hazardous waste regulation. To learn what regulations apply to you, contact the DOH's Hazardous Waste Section at (808) 586-4226.

Drop off / Pick up Locations and Services

Depending on the county, there may be local drop-off sites for businesses to bring waste to; otherwise, contact a hazardous waste transporter or universal waste collector to properly dispose of the batteries. Do not bring lithium-ion batteries to designated residential drop-off sites. For damaged lithium-ion batteries, see page 3 for disposal directions and locations.

If an item cannot be safely transported to or accepted at any on-island locations, hazardous waste transporters that abide by the U.S. Department of Transportation's requirements can be used. The DOH has compiled a list of hazardous waste transporters that may be able to provide service throughout the State. Follow this [link to access the website where the list of hazardous waste transporters is posted](#).

O‘ahu Drop off and Pick up Locations

Battery Bill’s

- Locations, phone numbers, and hours:
 - Mapunapuna: 960 Ahua Street, (808) 833-3797
 - Hours: Monday – Friday, 8am-4:30pm; Saturday, 8am-4pm
 - Nimitz: 550 North Nimitz Hwy #1A, (808) 536-4017
 - Hours: Monday – Friday, 8am-4:30pm
- Fees: \$10/lb
- Notes: large quantities of batteries accepted by appointment only

E-Opala Computer Recycling Center

- Location: 2627 Kilihau Street
- Phone: (808) 232-2000
- Hours: Monday – Sunday, 9am-4:30pm
- Collection type: drop-off or pick-up
- Fees: call for specific fees
- Notes: must create an E-Opala account and schedule an appointment

Island Recycling Inc

- Location: 91-140 Kaomi Loop (Kapolei)
- Phone: (808) 682-9200
- Hours: Monday – Saturday, 8am-3:30pm
- Collection type: drop-off or pick-up for fee
- Fees: \$2/lb + tax
- Notes: Wai‘anae location does not collect lithium-ion batteries

Pacific Commercial Services (PCS)

- Location: 91-254 Olai Street
- Hours: Monday – Friday, 8am-4pm
- Collection type: drop-off or pick-up for fee
- Fees: \$15/lb
- Phone: (808) 545-4599

Premier Environmental Services LLC

- Phone: (808) 282-1776
- Hours: Monday – Friday, 8am-4pm
- Collection type: pick-up only
- Fees: call for fees

Hawai'i Island Drop off and Pick up Locations

Battery Bill's

- Location: 76 Kea'a Street
- Phone: (808) 498-0698
- Hours: Monday – Friday, 8am-4:30pm
- Collection type: drop-off
- Fees: \$10/lb
- Notes: large quantities of batteries accepted by appointment only

Maui Drop off and Pick up Locations

E-Opala Computer Recycling Center

- Location: 300 E Uahi Way
- Phone: (808) 232-2000
- Hours: Monday – Friday, 9am-4:30pm
- Collection type: drop-off or pick-up
- Fees: call for specific fees
- Notes: must create an E-Opala account and schedule an appointment

Moloka'i Drop off and Pick up Locations

Naiwa Landfill, Molokai Metals Facility

- Location: Maunaloa Hwy, Moloka'i Island off Maunaloa Hwy between mm 3 & 4
- Phone: (808) 870-6453
- Hours: Tuesday – Saturday, 8am-2:30pm
- Collection type: deliver to staff, no drop-offs
- Fees: may apply

Lānaʻi Drop off and Pick up Locations

Lānaʻi Redemption and Recycling Center

- Location: 12th St. and Fraser Ave
- Phone: (808) 270-6102
- Hours: 2-4 times/year, check Maui County website for dates
- Collection type: drop-off
- Fees: none

Kauaʻi Service Providers

For businesses required to manage lithium batteries through permitted hazardous waste disposal companies, contact list:

- Cameron Chemical Corp.: (808) 695-2999
- Oasis Environmental Group: (808) 529-1300
- EnviroServices & Training Center: (808) 839-7222
- Pacific Commercial Services: services@pcshi.com
- Pacific Environmental Corp. (PENCO): (808) 545-5195

Damaged Batteries

Damaged, defective, or recalled (DDR) batteries are exceptionally dangerous. Batteries that are bulging, swelling, or leaking should be kept separate from non-damaged batteries, and handled differently due to the higher risk they present.

Oʻahu Drop off and Pick up Locations

Battery Bill's

- Locations, phone numbers, and hours:
 - Mapunapuna: 960 Ahua Street, (808) 833-3797
 - Hours: Monday – Friday, 8am-4:30pm; Saturday 8am-4pm
 - Nimitz: 550 North Nimitz Hwy #1A, (808) 536-4017
 - Hours: Monday – Friday, 8am-4:30pm
- Fees: \$25/lb
- Notes: large quantities of batteries accepted by appointment only

E-Opala Computer Recycling Center

- Location: 2627 Kilihau Street
- Phone: (808) 232-2000
- Hours: Monday – Sunday, 9am-4:30pm
- Collection type: drop-off or pick-up
- Fees: call for specific fees
- Notes: must create an E-Opala account and schedule an appointment

Pacific Commercial Services (PCS)

- Location: 91-254 Olai Street
- Phone: (808) 545-4599
- Hours: Monday – Friday, 8am-4pm
- Collection type: drop-off or pick-up for fee
- Fees: damaged batteries priced on case-by-case basis
- Notes: damaged batteries need a scheduled pick-up

Premier Environmental Services LLC

- Phone: (808) 282-1776
- Hours: Monday – Friday, 8am-4pm
- Collection type: pick-up
- Fees: call for fees

Hawai'i Island Drop off and Pick up Locations

Battery Bill's

- Location: 76 Kea'a Street
- Phone: (808) 498-0698
- Hours: Monday – Friday, 8am-4:30pm
- Collection type: drop-off
- Fees: \$25/lb
- Notes: large quantities of batteries accepted by appointment only

Disclaimer: The businesses listed on this sheet are not endorsed by the State of Hawai'i or DOH. The information gathered on this page is subject to change at any time without notice. Contact the facilities for the latest information.

QR Codes for Helpful Website Links

Follow this [link to access the DOH Solid & Hazardous Waste Branch website.](#)

Follow this [link to access the HEER Office's Lithium-ion Battery Fire Safety Flyer.](#)

Follow this [link to access the Residents: Lithium-ion Battery Disposal Info Sheet.](#)

Image Sources:

Follow this [link to Image 2's source website.](#)