

# Residents: Lithium-ion Battery Disposal (Small and Medium Formats)

## Information Sheet for Residents

### Risks of improper lithium-ion (Li-ion) battery disposal

If lithium-ion batteries are improperly handled during disposal or transport, they can become damaged and turn into a fire hazard. Damaged batteries can ignite and explode, which releases toxic chemicals and causes dangerous fires. For information on lithium-ion battery fire safety information, please see the Department of Health's (DOH) Hazard Evaluation and Emergency Response (HEER) Office website ([health.hawaii.gov/heer/environmental-health/fact-sheets/](https://health.hawaii.gov/heer/environmental-health/fact-sheets/)).

### Where are lithium-ion batteries commonly found?

Lithium-ion batteries are commonly contained in rechargeable devices. Small and medium format lithium-ion batteries, as defined by the EPA, are 0-11 pounds and 0-300 watt-hours, and 11-25 pounds and 300-2000 watt-hours, respectively. Common devices with lithium-ion batteries include:

- |                   |                         |                       |                               |
|-------------------|-------------------------|-----------------------|-------------------------------|
| • Cell phones     | • Laptops               | • Children's toys     | • Tablets and e-readers       |
| • Power tools     | • Portable chargers     | • E-cigarettes/vapes  | • Electric scooters and bikes |
| • Digital cameras | • Electric toothbrushes | • Cordless appliances |                               |

(Note: This list is not exhaustive; check labels on devices to see if they contain lithium-ion batteries. Additionally, this information and list do not apply to large format lithium-ion batteries like ones contained in electric vehicles and photovoltaic solar panel systems.)



Image 1: Shipping packaging warning for products with lithium-ion batteries

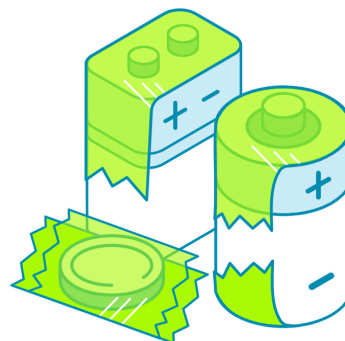


Image 2: Proper taping of lithium-ion battery terminals

### How should I properly dispose of my lithium-ion batteries?

Residents should properly dispose of lithium-ion batteries by giving them to facilities that are authorized to handle and process them safely. The DOH strongly warns residents against throwing lithium-ion batteries away in household trash. Improper disposal creates serious fire and safety risks. While businesses are legally required to follow hazardous waste regulations, households and residents also have a responsibility to keep their homes, families, and communities safe. Disposal rules may vary by county, but the expectation is consistent statewide: lithium-ion batteries should not be thrown out with normal garbage. Instead, they should always be taken to designated drop-off locations or managed through authorized pick-up services.

Note: **E-waste** disposal for electronic devices (e.g. computer, laptop, televisions, and video game monitors with screens  $\geq 9$  inches) that may have embedded, rechargeable batteries should be disposed at e-waste collection sites. Please see [health.hawaii.gov/ewaste/e-waste-collection-locations](https://health.hawaii.gov/ewaste/e-waste-collection-locations) for e-waste disposal directions.

**O'ahu residents:** For non-e-waste items with embedded batteries that cannot be removed (e.g. e-bikes, vapes, toothbrushes), schedule an appointment with the Household Hazardous Waste Drop-off with the City.

Phone: (808) 768-3201, Email: [hhw@honolulu.gov](mailto:hhw@honolulu.gov)

## Drop-off / Pick-up Locations and Services

Handling of products with embedded lithium-ion batteries differs by county. Contact your county's solid waste or refuse division for instructions on how to dispose of such items. For damaged lithium-ion batteries, see page 4 for disposal directions and locations.

### Preparing for Proper Disposal

1. Safely remove lithium-ion batteries from devices, if possible.
2. Cover lithium battery terminals with non-metallic packing, duct, or electrical tape.
3. Individually bag each battery.
4. Drop off at designated battery collection sites, schedule for pick-up with authorized collection services, or turn in at household hazardous waste collection facilities/events.

### O'ahu Drop-off and Pick-up Locations

#### City and County of Honolulu Convenience Centers

- Locations and phone numbers:
  - Waimānalo: 41-241 Hihimanu Street, (808) 259-7182
  - Wai'anae: 85-572 Wai'anae Valley Road, (808) 696-4203
  - Waipahu: 94-071 Waipahu Depot Street, (808) 676-8878
  - 'Ewa Beach: 91-1000 Geiger Road, (808) 226-2996
  - Kapolei: 91-184 Kaomi Loop, (808) 260-2801
  - Lā'i'e: 56-020 Kamehameha Highway, (808) 293-8714
  - Wahiawā: 71-129 Wilikina Drive, (808) 621-3648
- Hours: Monday – Sunday, 7am–6pm (closed Christmas Day and New Year's Day)
- Collection type: drop-off
- Fees: none

#### City and County of Honolulu Transfer Stations

- Locations and phone numbers:
  - Ke'ehi (Honolulu): 606 Middle Street, (808) 768-4884
  - Kapa'a (Kailua): 100 Kapa'a Quarry Road, (808) 768-4248
  - Kawaihoa (Hale'iwa): 62-180 Kawaihoa Road, (808) 637-5511
- Hours:
  - Ke'ehi and Kapa'a: Monday – Friday, 10am–6pm; Saturday – Sunday, 7am–6pm (closed Christmas Day and New Year's Day)
  - Kawaihoa: Monday – Sunday, 7am–6pm (closed Christmas Day and New Year's Day)
- Collection type: drop-off
- Fees: none

#### E-Opala Computer Recycling Center

- Location: 2627 Kiliha Street
- Phone: (808) 232-2000
- Hours: Monday – Sunday, 9am-4:30pm
- Collection type: drop-off or pick-up
- Fees: call for specific fees
- Notes: must create an E-Opala account and schedule an appointment

#### Home Depot

- Locations, phone numbers, and hours:
  - Honolulu: 421 Alakawa St, (808) 521-7355
    - Hours: Monday – Saturday, 5am-10pm; Sunday, 5am–8pm
  - Kapolei: 4600 Kapolei Pkwy, (808) 674-6120
    - Hours: Monday – Saturday, 6am–10pm; Sunday, 7am–8pm
- Collection Type: drop-off
- Fees: none
- Notes: small lithium-ion formats only, place in plastic bag provided at location or tape terminals

#### Island Recycling Inc

- Location: 91-140 Kaomi Loop (Kapolei)
- Phone: (808) 682-9200
- Hours: Monday – Saturday, 8am-3:30pm
- Collection type: drop-off or pick-up for fee
- Fees: \$2/lb + tax
- Notes: Wai'anae location does not collect lithium-ion batteries

#### Pacific Commercial Services (PCS)

- Location: 91-254 Olai Street
- Hours: Monday – Friday, 8am–4pm
- Collection type: drop-off or pick-up for fee
- Fees: \$15/lb
- Phone: (808) 545-4599

**O'ahu Drop-off and Pick-up Locations, cont.****Battery Bill's**

- Locations, phone numbers, and hours:
  - Mapunapuna: 960 Ahua Street, (808) 833-3797
    - Hours: Monday – Friday, 8am–4:30pm; Saturday, 8am–4pm
  - Nimitz: 550 North Nimitz Hwy #1A, (808) 536-4017
    - Hours: Monday – Friday, 8am–4:30pm
- Fees: \$10/lb
- Notes: large quantities of batteries accepted by appointment only

**Hawai'i Island Drop-off and Pick-up Locations****Battery Bill's**

- Location: 76 Kea'a Street
- Phone: (808) 498-0698
- Hours: Monday – Friday, 8am-4:30pm
- Collection type: drop-off
- Fees: \$10/lb
- Notes: large quantities of batteries accepted by appointment only

**Home Depot**

- Locations, phone numbers, and hours:
  - Hilo: 380 E Maka'ala St, (808) 920-8400
    - Hours: Monday – Saturday, 6am-10pm; Sunday 7am-7pm
  - Kailua-Kona: 73-5598 Olowalu St, (808) 326-6013
    - Monday – Saturday, 6am-9pm; Sunday, 7am-7pm
- Collection Type: drop-off
- Fees: none
- Notes: small lithium-ion formats only, place in plastic bag provided at location or tape terminals

**Household Hazardous Waste Collection Events**

- Locations (all are subject to change):
  - Hilo: Afook-Chinen Civic Auditorium Parking Lot, Ho'olulu Park, 323 Manono St (enter through Pi'ilani St.)
  - Kailua-Kona: West Hawai'i Civic Center Parking Lot, 74-5044 Ane Keohokālole Hwy
  - Waimea: Waimea District Park Parking Lot, 67-1315 Ala 'Ōhi'a Road
  - Pāhoa: Pāhoa Recycling & Transfer Station, 15-1870 Cemetery Road
  - Phone: (808) 961-8554
- Hours: visit County of Hawai'i's website at [hawaiiizerowaste.org/recycle/household-hazardous-waste](http://hawaiiizerowaste.org/recycle/household-hazardous-waste) for operation information
- Collection type: drop-off
- Fees: none
- Notes: place tape over terminals

**Kaua'i Drop-off and Pick-up Locations****Home Depot**

- Location: 4320 Nuhou St
- Phone: (808) 632-2740
- Hours: Monday – Saturday, 6am-9pm; Sunday, 7am-7pm
- Collection Type: drop-off
- Fees: none
- Notes: small lithium-ion (up to 11 lbs), place in plastic bag provided at location or tape terminals. No embedded batteries.

**Household Hazardous Waste Collection Events**

- Locations (all subject to change):
  - Kapa'a: Kapa'a Baseyard, 4900 Kahau Rd
  - Hanapepe: Hanapepe Baseyard, 4380 Lele Rd
  - Līhu'e: Kaua'i Resource Center, 3460 Ahukini Rd
  - Kīlauea: Ānaina Hou Community Park, 5-2723 Kuhio Hwy
- Phone: (808) 241-4841
- Hours: semi-annual; visit the County of Kaua'i's website at [kauai.gov/Government/Departments-Agencies/Public-Works/Solid-Waste/Recycling/HHW](http://kauai.gov/Government/Departments-Agencies/Public-Works/Solid-Waste/Recycling/HHW)
- Collection type: drop-off, residents only. 4-pound limit. Small-format lithium-ion batteries only. No embedded batteries.
- Fees: none

**Kaua'i Resource Center**

- Location: 3460 Ahukini Road
- Phone: (808) 241-4841
- Hours: Monday – Friday, 7:45am-4:30pm; closed on all County holidays
- Collection type: drop-off, residents only
- Fees: none
- Notes: 4-pound limit. Small format lithium-ion batteries only. No embedded batteries.

**Maui Drop-off and Pick-up Locations****E-Opala Computer Recycling Center**

- Location: 300 E Uahi Way
- Phone: (808) 232-2000
- Hours: Monday – Friday, 9am-4:30pm
- Collection type: drop-off or pick-up
- Fees: call for specific fees
- Notes: must create an E-Opala account and schedule an appointment

**Home Depot**

- Location: 100 Pakaula St
- Phone: (808) 893-7800
- Hours: Monday – Saturday, 6am-10pm; Sunday 6am-7pm
- Collection Type: drop-off
- Fees: none
- Notes: small lithium-ion formats only, place in plastic bag provided at location or tape terminals

### Lānaʻi Drop-off and Pick-up Locations

#### **Lānaʻi Redemption and Recycling Center**

- Location: 12th St. and Fraser Ave
- Phone: (808) 270-6102
- Hours: 2-4 times/year, visit Maui County website for dates
- Collection type: drop-off
- Fees: none

### Molokaʻi Drop-off and Pick-up Locations

#### **Molokaʻi Metals Facility, Naiwa Landfill**

- Location: Maunaloa Hwy, Molokaʻi Island off Maunaloa Hwy between mm 3 & 4, Maunaloa
- Phone: (808) 870-6453
- Hours: Tuesday – Saturday, 8am-2:30pm
- Collection type: deliver to staff, no drop-offs
- Fees: none for residents, may apply to materials from businesses

## Damaged Batteries

Damaged, defective, or recalled (DDR) batteries are exceptionally dangerous. Batteries that are bulging, swelling, or leaking should be kept separate from non-damaged batteries and handled differently due to the higher risk they present.

### Oʻahu Drop-off and Pick-up Locations

#### **Battery Bill's**

- Locations, phone numbers, and hours:
  - Mapunapuna: 960 Ahua Street, (808) 833-3797
    - Hours: Monday – Friday, 8am-4:30pm; Saturday 8am-4pm
  - Nimitz: 550 North Nimitz Hwy #1A Honolulu, (808) 536-4017
    - Hours: Monday – Friday, 8am-4:30pm
- Fees: \$25/lb
- Notes: large quantities of batteries accepted by appointment only

#### **E-Opala Computer Recycling Center**

- Location: 2627 Kili Hau Street
- Phone: (808) 232-2000
- Hours: Monday – Sunday, 9am-4:30pm
- Collection type: drop-off or pick-up
- Fees: call for specific fees
- Notes: must create an E-Opala account and schedule an appointment

#### **Pacific Commercial Services (PCS)**

- Location: 91-254 Olai Street
- Phone: (808) 545-4599
- Hours: Monday – Friday, 8am-4pm
- Collection type: drop-off or pick-up for fee
- Fees: damaged batteries priced on case-by-case basis
- Notes: damaged batteries need scheduled pick-up

### Hawaiʻi Island Drop-off and Pick-up Locations

#### **Battery Bill's**

- Location: 76 Keaʻa Street
- Phone: (808) 498-0698
- Hours: Monday – Friday, 8am-4:30pm
- Collection type: drop-off
- Fees: \$25/lb
- Notes: large quantities of batteries accepted by appointment only

Disclaimer: The businesses listed on this sheet are not endorsed by the State of Hawaiʻi or DOH. The information gathered on this page is subject to change at any time without notice. Contact the facilities directly for the latest information.

## QR Codes for Related Resources



DOH Solid & Hazardous  
Waste Branch



Business: Lithium-ion Battery  
Disposal Info Sheet



HEER Office Lithium-ion  
Battery Fire Safety Flyer

Image Sources:

Image 2: [www.wmwaste.com.au/resource-centre/safe-battery-disposal](http://www.wmwaste.com.au/resource-centre/safe-battery-disposal)