

Businesses: Lithium-ion Battery Disposal (Small and Medium Formats)

Information Sheet for Businesses

Risks of improper lithium-ion (Li-on) battery disposal

If lithium-ion batteries are improperly handled during disposal or transport, they can become damaged and turn into a fire hazard. Damaged batteries can ignite and explode, which releases toxic chemicals and causes dangerous fires. For information on lithium-ion battery fire safety information, please see the Department of Health's (DOH) [Hazard Evaluation and Emergency Response \(HEER\) Office website](#).

Where are lithium-ion batteries commonly found?

Lithium-ion batteries are commonly contained in rechargeable devices. Small and medium format lithium-ion batteries, as defined by the EPA, are 0-11 pounds and 0-300 watt-hours, and 11-25 pounds and 300-2000 watt-hours, respectively. Common devices with lithium-ion batteries include:

- | | | | |
|-------------------|-------------------------|-----------------------|-------------------------------|
| • Cell phones | • Laptops | • Children's toys | • Tablets and e-readers |
| • Power tools | • Portable chargers | • E-cigarettes/vapes | • Electric scooters and bikes |
| • Digital cameras | • Electric toothbrushes | • Cordless appliances | |

(Note: This list is not exhaustive; check labels on devices to see if they contain lithium-ion batteries. Additionally, this information and list do not apply to large format lithium-ion batteries like ones contained in electric vehicles and photovoltaic solar panel systems.)



Image 1: Shipping packaging warning for products with lithium-ion batteries

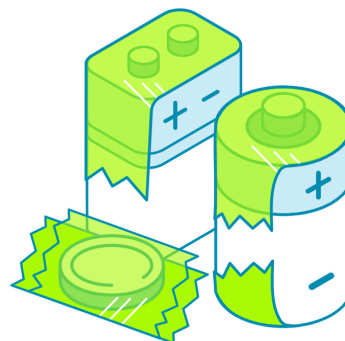


Image 2: Proper taping of lithium-ion battery terminals

How should my business properly dispose of our lithium-ion batteries?

To safely dispose of lithium-ion batteries and products, businesses should seek out authorized handling facilities and/or transporter (resources are suggested below). Businesses are mandated by law to properly dispose of their hazardous waste, including lithium-ion batteries, which are considered as universal waste. In addition to the recommended collection sites listed below, the DOH maintains a [list of universal waste collectors](#). For inquiries, please call the DOH's Hazardous Waste section at (808) 586-4226.

Electronic Waste (E-Waste)

Electronic devices (e.g. computer, laptop, televisions, and video game monitors with screens ≥ 9 inches) that contain embedded, rechargeable lithium-ion batteries should be disposed at e-waste collection sites or via the product manufacturer's recycling plan. Please see the [DOH's e-waste website](#) for e-waste disposal. In cases where e-waste is considered hazardous waste, businesses' disposal requirements are subject to hazardous waste regulation. To learn what regulations apply to you, contact the DOH's Hazardous Waste Section at (808) 586-4226.

Drop-off / Pick-up Locations and Services

Depending on the county, there may be local drop-off sites for businesses to bring waste to; otherwise, contact a private hazardous waste transporter or universal waste collector to properly dispose of the batteries. Do not bring lithium-ion batteries to designated residential drop-off sites. For damaged lithium-ion batteries, see page 3 for disposal directions and locations.

If an item cannot be safely transported to or accepted at any on-island locations, hazardous waste transporters that abide by the U.S. Department of Transportation's requirements can be used. The DOH has compiled a [list of hazardous waste transporters](#) that may be able to provide service throughout the State.

O'ahu Drop-off and Pick-up Locations

Battery Bill's

- Locations, phone numbers, and hours:
 - Mapunapuna: 960 Ahua Street, (808) 833-3797
 - Hours: Monday – Friday, 8am-4:30pm; Saturday, 8am-4pm
 - Nimitz: 550 North Nimitz Hwy #1A, (808) 536-4017
 - Hours: Monday – Friday, 8am-4:30pm
- Fees: \$10/lb
- Notes: large quantities of batteries accepted by appointment only

E-Opala Computer Recycling Center

- Location: 2627 Kili Hau Street
- Phone: (808) 232-2000
- Hours: Monday – Sunday, 9am-4:30pm
- Collection type: drop-off or pick-up
- Fees: call for specific fees
- Notes: must create an E-Opala account and schedule an appointment

Island Recycling Inc

- Location: 91-140 Kaomi Loop (Kapolei)
- Phone: (808) 682-9200
- Hours: Monday – Saturday, 8am-3:30pm
- Collection type: drop-off or pick-up for fee
- Fees: \$2/lb + tax
- Notes: Wai'anae location does not collect lithium-ion batteries

Pacific Commercial Services (PCS)

- Location: 91-254 Olai Street
- Hours: Monday – Friday, 8am-4pm
- Collection type: drop-off or pick-up for fee
- Fees: \$15/lb
- Phone: (808) 545-4599

Premier Environmental Services LLC

- Phone: (808) 282-1776
- Hours: Monday – Friday, 8am-4pm
- Collection type: pick-up only
- Fees: call for fees

Hawai'i Island Drop-off and Pick-up Locations

Battery Bill's

- Location: 76 Kea'a Street
- Phone: (808) 498-0698
- Hours: Monday – Friday, 8am-4:30pm
- Collection type: drop-off
- Fees: \$10/lb
- Notes: large quantities of batteries accepted by appointment only

Maui Drop-off and Pick-up Locations

E-Opala Computer Recycling Center

- Location: 300 E Uahi Way
- Phone: (808) 232-2000
- Hours: Monday – Friday, 9am-4:30pm
- Collection type: drop-off or pick-up
- Fees: call for specific fees
- Notes: must create an E-Opala account and schedule an appointment

Lāna'i Drop-off and Pick-up Locations

Lāna'i Redemption and Recycling Center

- Location: 12th St. and Fraser Ave
- Phone: (808) 270-6102
- Hours: 2-4 times/year, check Maui County website for dates
- Collection type: drop-off
- Fees: none

Moloka'i Drop-off and Pick-up Locations

Naiwa Landfill, Molokai Metals Facility

- Location: Maunaloa Hwy, Moloka'i Island off Maunaloa Hwy between mm 3 & 4
- Phone: (808) 870-6453
- Hours: Tuesday – Saturday, 8am-2:30pm
- Collection type: deliver to staff, no drop-offs
- Fees: may apply

Kaua'i Service Providers

For businesses required to manage lithium-ion batteries through permitted hazardous waste disposal companies, contact list:

- Cameron Chemical Corp.: (808) 695-2999
- EnviroServices & Training Center: (808) 839-7222
- Oasis Environmental Group: (808) 529-1300
- Pacific Commercial Services: services@pcshi.com
- Pacific Environmental Corp. (PENCO): (808) 545-5195

Damaged Batteries

Damaged, defective, or recalled (DDR) batteries are exceptionally dangerous. Batteries that are bulging, swelling, or leaking should be kept separate from non-damaged batteries and handled differently due to the higher risk they present.

O'ahu Drop-off and Pick-up Locations

Battery Bill's

- Locations, phone numbers, and hours:
 - Mapunapuna: 960 Ahua Street, (808) 833-3797
 - Hours: Monday – Friday, 8am-4:30pm; Saturday 8am-4pm
 - Nimitz: 550 North Nimitz Hwy #1A, (808) 536-4017
 - Hours: Monday – Friday, 8am-4:30pm
- Fees: \$25/lb
- Notes: large quantities of batteries accepted by appointment only

E-Opala Computer Recycling Center

- Location: 2627 Kili Hau Street
- Phone: (808) 232-2000
- Hours: Monday – Sunday, 9am-4:30pm
- Collection type: drop-off or pick-up
- Fees: call for specific fees
- Notes: must create an E-Opala account and schedule an appointment

Pacific Commercial Services (PCS)

- Location: 91-254 Olai Street
- Phone: (808) 545-4599
- Hours: Monday – Friday, 8am-4pm
- Collection type: drop-off or pick-up for fee
- Fees: damaged batteries priced on case-by-case basis
- Notes: damaged batteries need a scheduled pick-up

Premier Environmental Services LLC

- Phone: (808) 282-1776
- Hours: Monday – Friday, 8am-4pm
- Collection type: pick-up
- Fees: call for fees

Disclaimer: These businesses are not endorsed by the State of Hawai'i or DOH. The information gathered on this page is subject to change at any time without notice. Contact the facilities directly for the latest information.

Hawai'i Island Drop-off and Pick-up Locations

Battery Bill's

- Location: 76 Kea'a Street
- Phone: (808) 498-0698
- Hours: Monday – Friday, 8am-4:30pm
- Collection type: drop-off
- Fees: \$25/lb
- Notes: large quantities of batteries accepted by appointment only

QR Codes for Related Resources



HEER Office Lithium-ion
Battery Fire Safety Flyer



DOH Solid & Hazardous
Waste Branch



Residents: Lithium-ion Battery
Disposal Info Sheet

Image Sources:

- Image 2: www.wmwaste.com.au/resource-centre/safe-battery-disposal