

Central Maui Landfill

Puunene, Hawaii

Phase V-A And Related Improvements

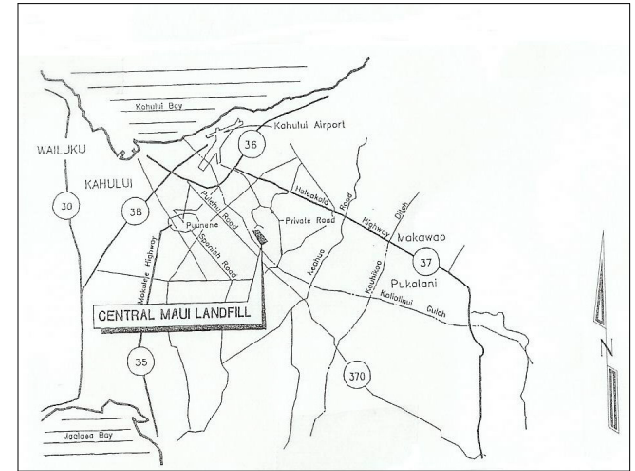
Record Drawings

Prepared by:

A-Mehr, Inc.
 23016 Mill Creek Drive
 Laguna Hills, CA 92653
 (949) 206-0157
 10/9/08
 Revision Date: 9/21/09

Owner:

County of Maui
 Department of Environmental Management
 Solid Waste Division
 2200 Main Street, Suite 225
 Wailuku, Hawaii 96793



Vicinity Map

This work was prepared by me
 or under my supervision

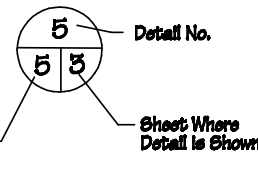
Sheet Number	Sheet Title
1	Cover Sheet
2	Site Map
3	Existing and Expansion Liner Grades
3A	Phase III Borrow Area
4	Phase IV-B LCRs & Liner Grades
5	Phase V-A Partition and Temporary Separation
5A	Horizontal Gas Collectors
6	Interim Fill Plan
7	Liner Detail 1
8	Liner Detail 2
9	West Perimeter Drainage Plan & Profile
10	East Perimeter Drainage Plan & Profile
11	Horizontal Gas Collector Details
12	Phase IV-B Sump Leachate Handling System
13	Leachate Handling System Details 1
14	Leachate Handling System Details 2
15	Leachate Handling System Details 3

Project Engineer

All Mehrazarin, P.E.

Date

Detail Conventions:



Approved by: _____
 Chief, Environmental Management Division
 Department of Health
 State of Hawaii
 Date: _____

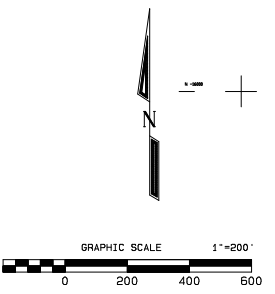
Approved by: _____
 Director of Environmental Management
 2200 Main Street, Suite 100
 Wailuku, Hawaii 96793
 Date: _____



Legend

— Existing Topography Grades as of 4/2/08

— Property Line



No.	Revision	Date	By
1	Perimeter Drainage Road Modification	8/18/08	RM
2	Updated Topography	8/18/08	RM
3	Revised Phase V-A Linear Limits	8/21/08	RM

A-Mehr, Inc.
 Central Maui Landfill
 Phase V-A And Related Improvements
 Record Drainage
 Site Map

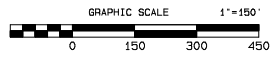
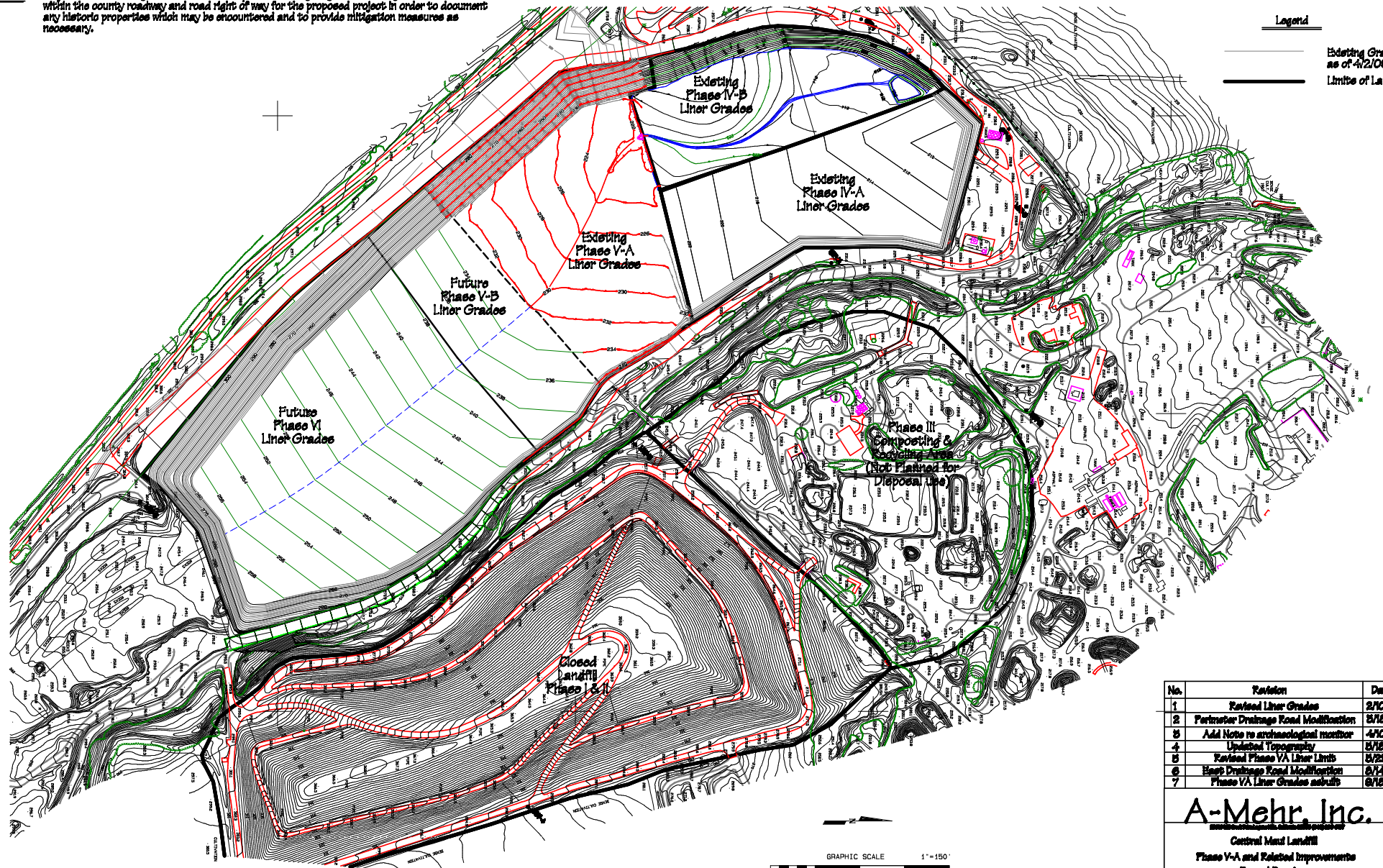
Existing Topography Grades as of 4/2/08

2

Note: A qualified archaeological monitor shall be present during all ground altering disturbances within the county roadway and road right of way for the proposed project in order to document any historic properties which may be encountered and to provide mitigation measures as necessary.

Legend

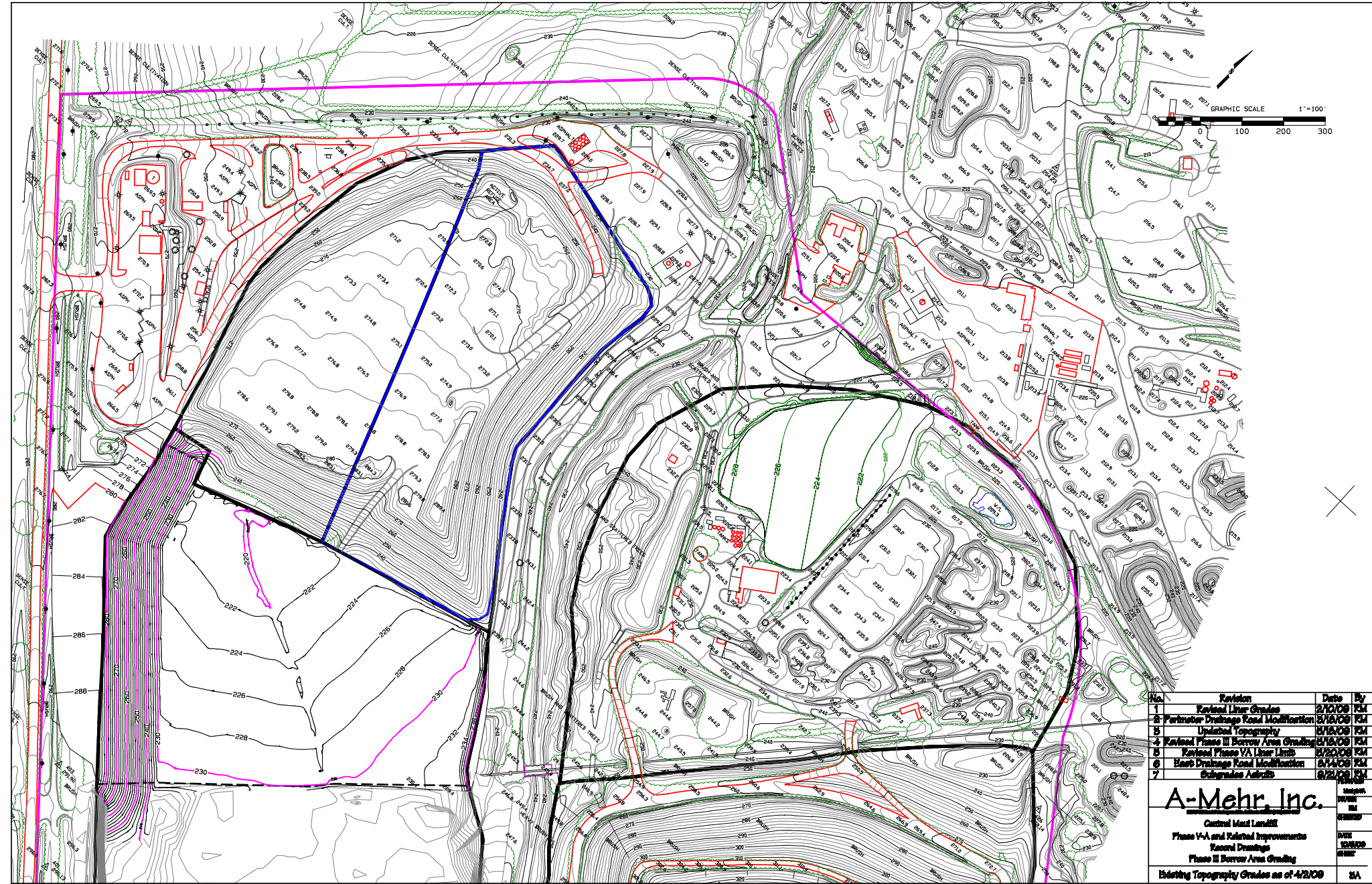
Existing Grades as of 4/2/08
 Limits of Landfilling



No.	Revision	Date	By
1	Revised Liner Grades	2/10/08	FM
2	Perimeter Drainage Road Modification	2/18/08	FM
3	Add Note re archaeological monitor	4/10/08	FM
4	Updated Topography	5/18/08	FM
5	Revised Phase VA Liner Limit	5/28/08	FM
6	Perimeter Drainage Road Modification	6/14/08	FM
7	Phase VA Liner Grades adjust	8/15/08	FM

A-Mehr, Inc.
 Central Mini Landfill
 Phase V-A and Related Improvements
 Record Drawings
 Existing and Expansion Liner Grades

DATE: 8/14/08
 DRAWN BY: [Signature]



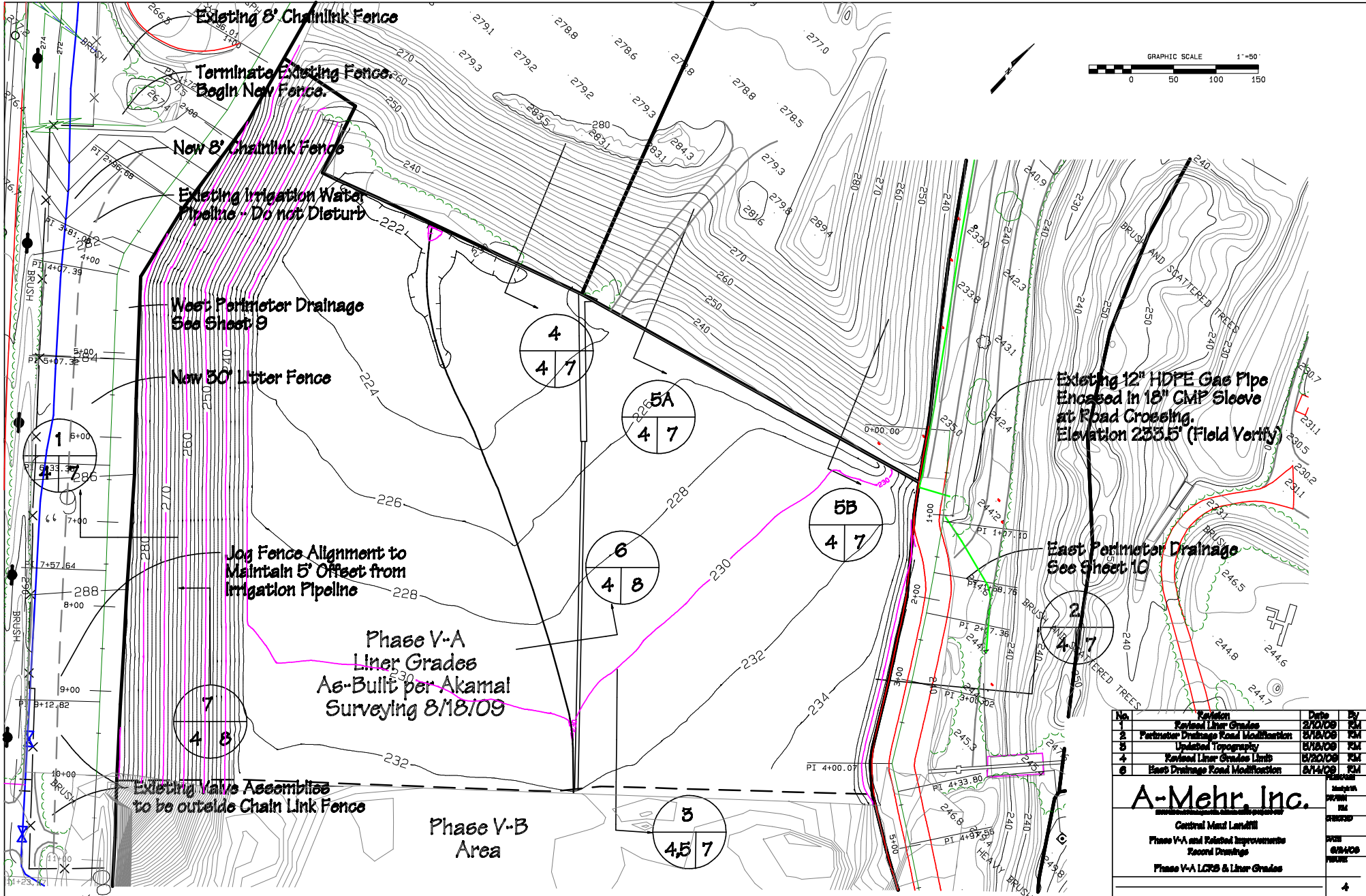
No.	Revision	Date	By
1	Revised Liner Grades	2/12/08	RM
2	Perimeter Drainage Road Modification	2/12/08	RM
3	Updated Topography	2/12/08	RM
4	Revised Phase III Borrow Area Grading	2/12/08	RM
5	Revised Phase VA Liner Limits	2/20/08	RM
6	Base Drainage Road Modification	2/12/08	RM
7	Subgrades Asphalt	2/25/08	RM

A-Mehr, Inc.

Central Mail Landfill
 Phase V-A and Related Improvements
 Record Drawings
 Phase III Borrow Area Grading

Dating Topography Grades as of 4/2/08

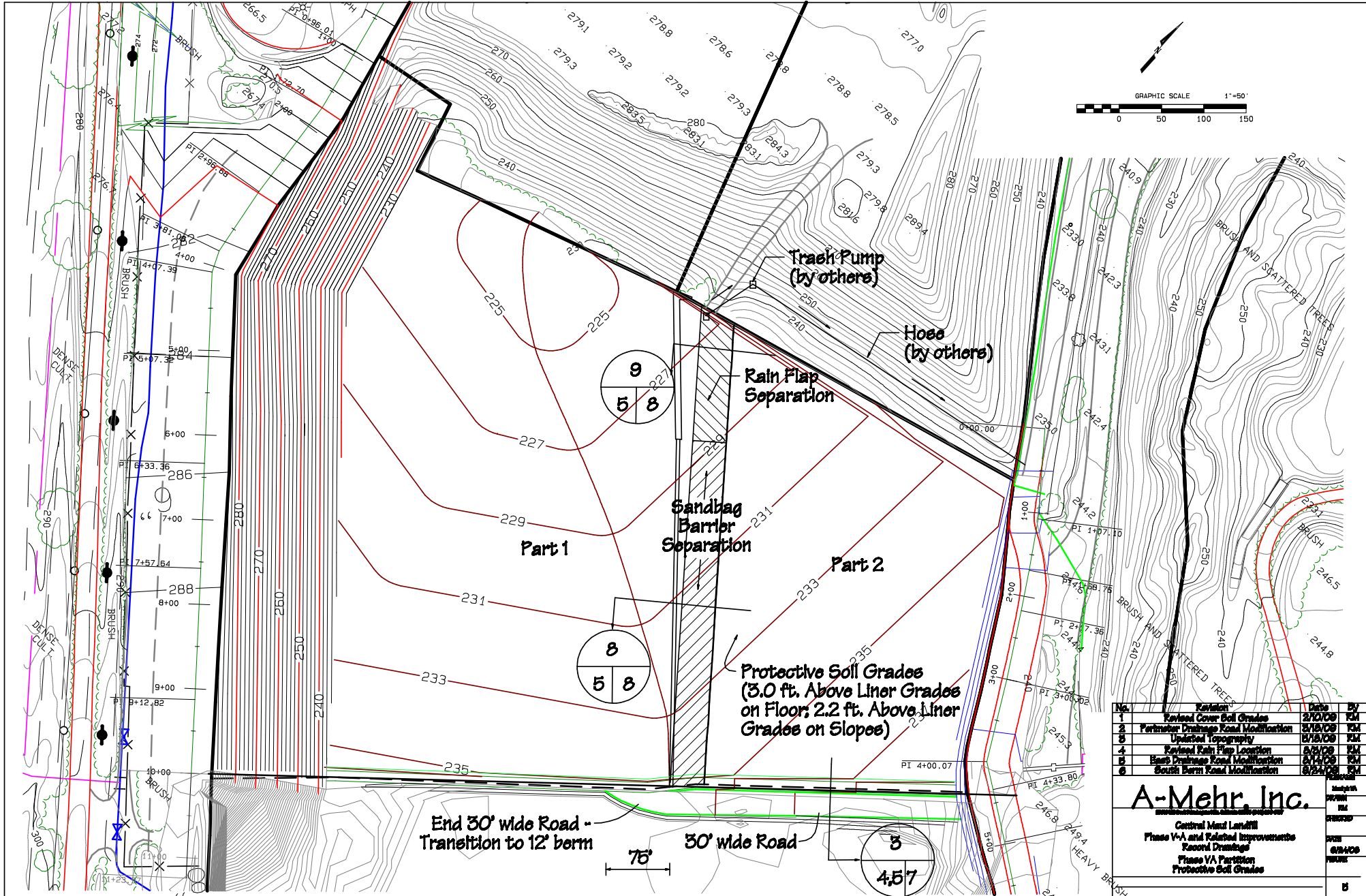
Project
 No.
 SHEET
 NO.
 20
 20



No.	Revision	Date	By
1	Revised Liner Grades	2/10/09	FM
2	Perimeter Drainage Road Modification	8/18/09	FM
3	Updated Topography	8/18/09	FM
4	Revised Liner Grades Limit	8/20/09	FM
6	East Drainage Road Modification	8/14/09	FM

A-Mehr, Inc.
 Central Mendocino
 Phase V-A and Related Improvements
 Record Drawings
 Phase V-A LCRS & Liner Grades

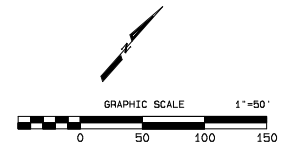
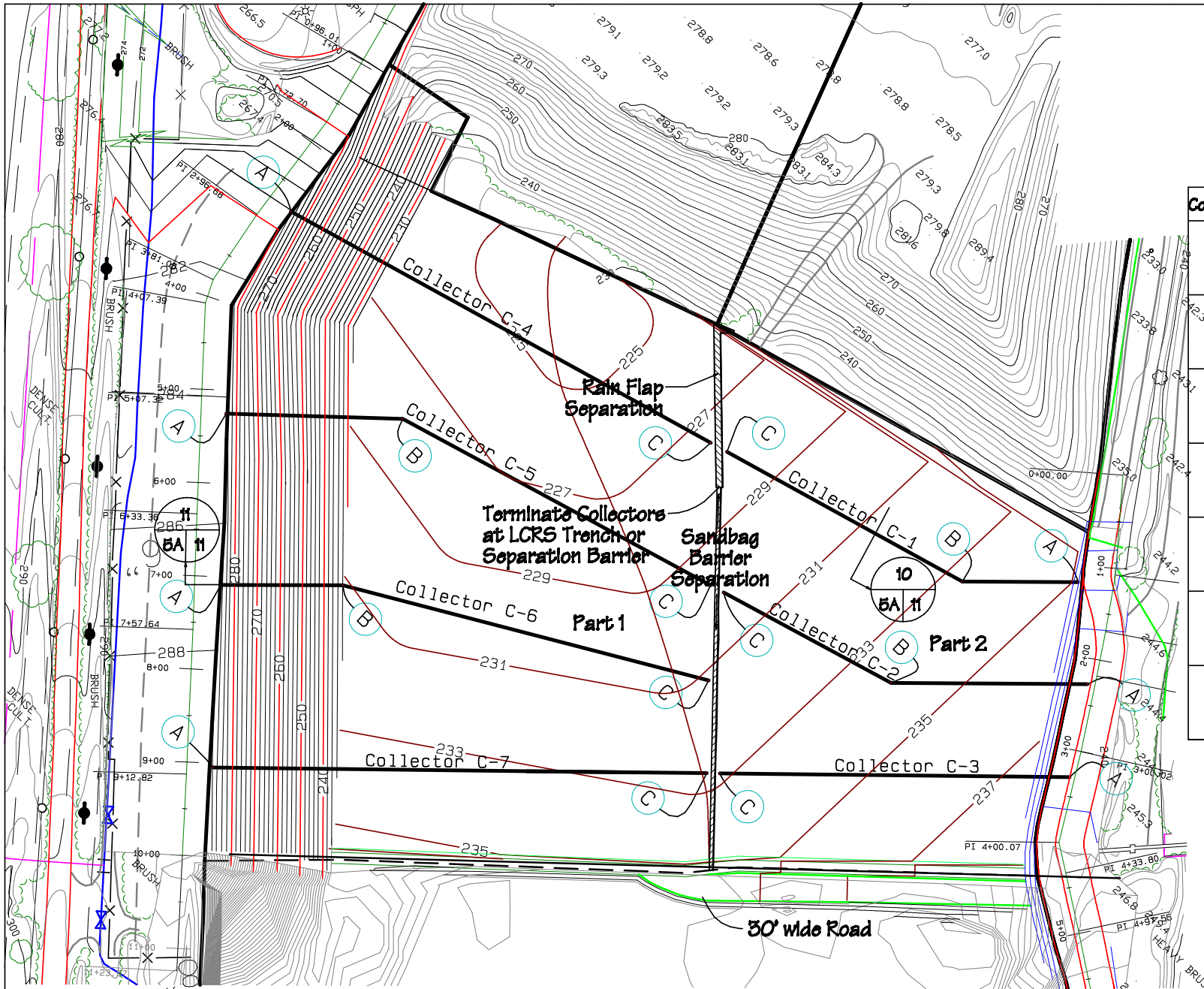
4



No.	Revision	Date	By
1	Revised Cover Soil Grades	2/20/08	FM
2	Partition Drainage Road Modification	5/15/08	FM
3	Updated Topography	5/15/08	FM
4	Revised Rain Flap Location	6/11/08	FM
5	Revised Drainage Road Modification	6/11/08	FM
6	South Berm Road Modification	8/24/08	FM

A-Mehr, Inc.
 Central Mass Landfill
 Phase V-A and Related Improvements
 Record Drawings
 Phase VA Partition
 Protective Soil Grades

DATE: 8/24/08
 DRAWN BY: [Signature]
 CHECKED BY: [Signature]



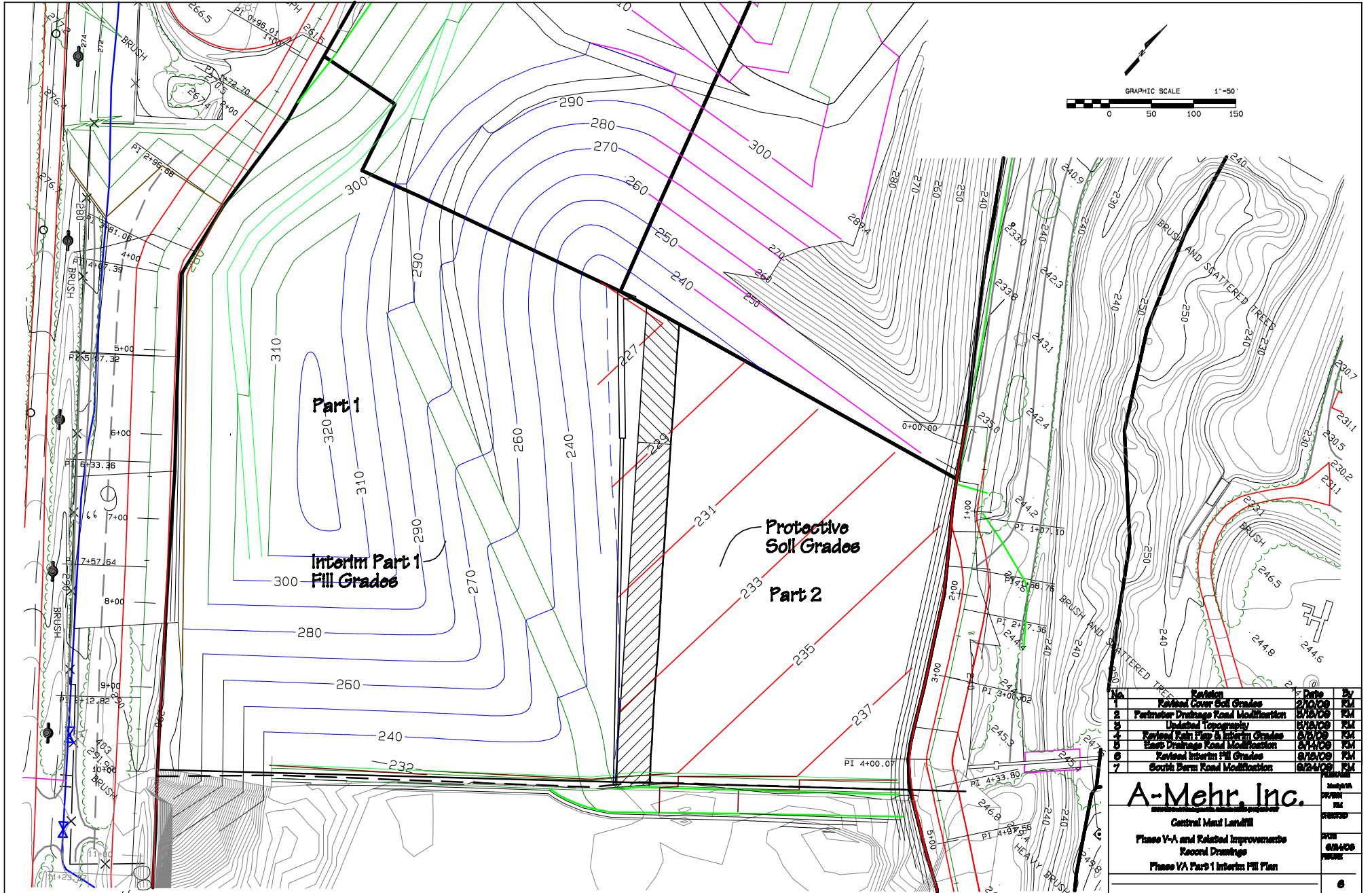
Controls

Collector	Point	Northing	Easting
C1	A	-14655.0121	-8255.7062
	B	-14737.5165	-8370.2782
	C	-14807.5416	-8650.0569
C2	A	-14719.4911	-8159.4729
	B	-14669.1182	-8552.5237
	C	-14920.2856	-8550.1704
C3	A	-14755.4287	-8115.0659
	B	"	"
	C	-15065.0712	-8421.1054
C4	A	-14656.5323	-8167.9192
	B	"	"
	C	-14912.1123	-8669.1767
C5	A	-15142.7249	-8071.5495
	B	-15018.2249	-8925.7405
	C	-14924.2562	-8665.4112
C6	A	-15281.2571	-8950.5745
	B	-15192.5165	-8954.5389
	C	-15000.8210	-8497.5927
C7	A	-15450.2057	-8925.2376
	B	"	"
	C	-15074.4921	-8431.4692

No.	Revision	Date	By
1	Revised Cover Soil Grades	2/10/09	RM
2	Particular Drainage Road Modification	5/19/09	RM
3	Updated Topography	5/19/09	RM
4	Revised Rain Flap & Collector Locations	5/19/09	RM
5	East Drainage Road Modification	8/14/09	RM
6	Revised Rain Flap & Collector Locations	8/24/09	RM
7	South Berm Road Modification	8/24/09	RM

A-Mehr, Inc.
 Central Mass Landfill
 Phase V-A and Related Improvements
 Record Drawings
 Phase VA Part 10
 Horizontal Gas Collectors

DATE: 8/24/09
 BY: BA



No.	Revisions	Date	By
1	Revised Cover Soil Grades	2/10/09	KM
2	Revised Drainage Canal Modification	6/16/09	KM
3	Updated Topography	6/16/09	KM
4	Revised Soil Erosion Control Grades	6/16/09	KM
5	Revised Drainage Canal Modification	6/16/09	KM
6	Revised Interim Fill Grades	9/24/09	KM
7	South Berm Road Modification	9/24/09	KM

A-Mehr, Inc.
 Central Mass Landfill
 Phase V-A and Related Improvements
 Record Drawings
 Phase VA Part 1 Interim Fill Plan

DATE PLOTTED: 10/20/09
 PLOT SCALE: AS SHOWN
 SHEET NO: 6