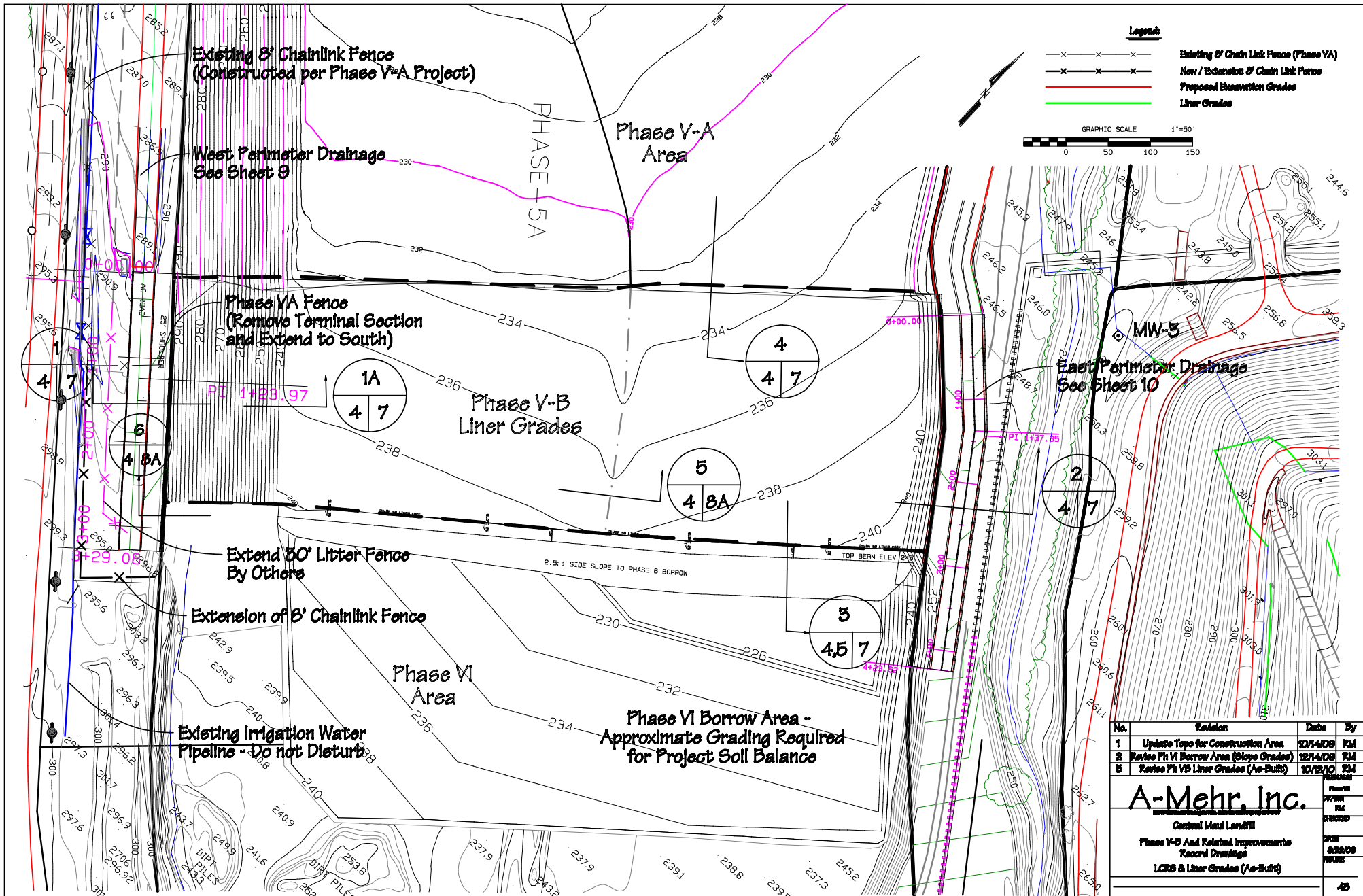


No.	Revision	Date	By
1	Update Topo for Construction Area	10/14/08	KM
2	Revise Ph VI Borrow Area (Slope Grades)	12/14/08	KM
3	Revise Ph VB Subgrades (As-Built)	10/22/10	KM

A-Mehr, Inc.

Central Mendocino
Phase V-B Area Related Improvements
Record Drawings
Subgrades (As-Built)

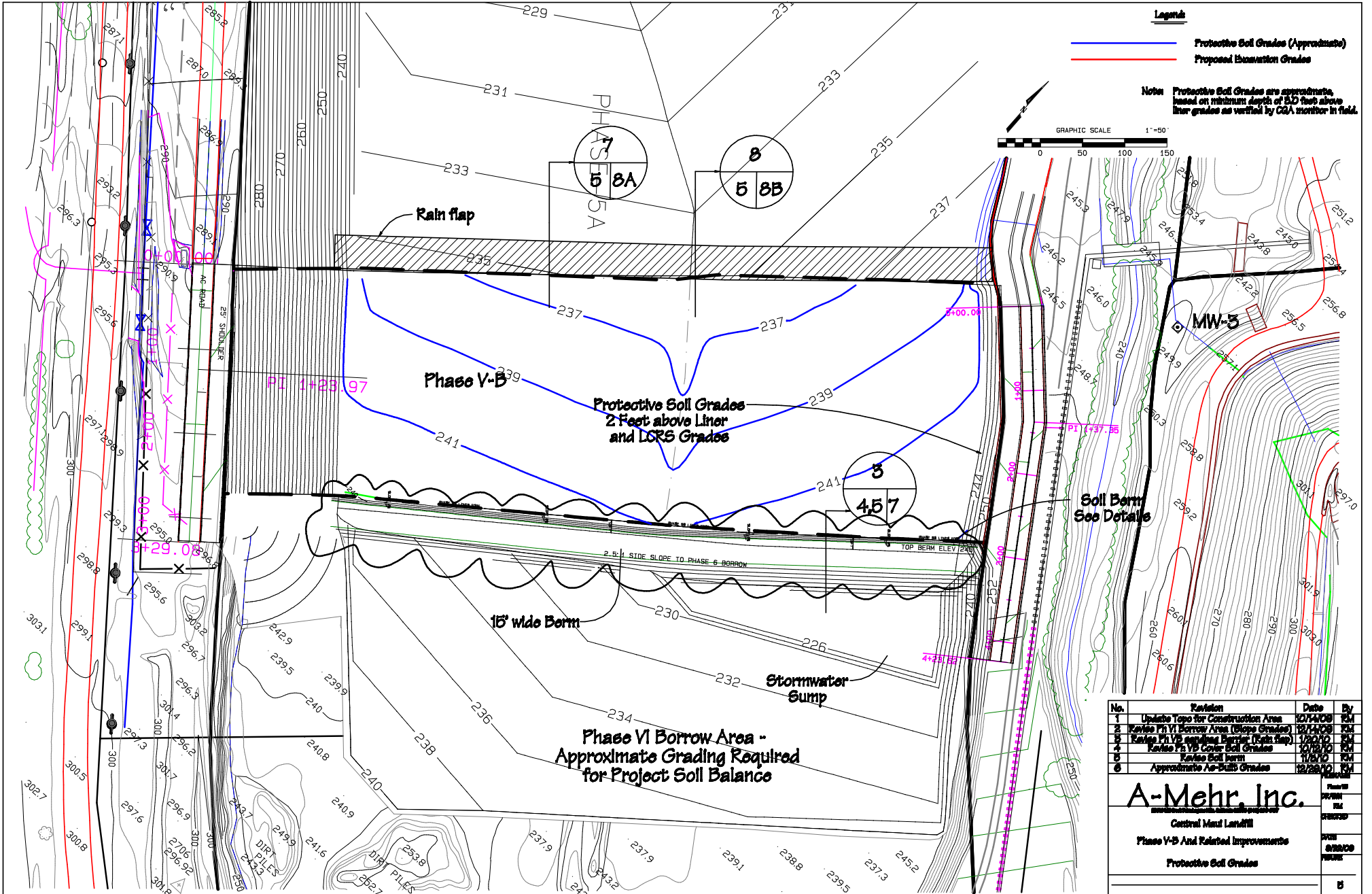
4A



No.	Revision	Date	By
1	Update Topo for Construction Area	10/14/08	RM
2	Revise PVI Borrow Area (Slope Grades)	12/14/08	RM
3	Revise PVI Liner Grades (As-Built)	10/12/10	RM

A-Mehr, Inc.
 Central Mass Landfill
 Phase V-B And Related Improvements
 Record Drawings
 LCRS & Liner Grades (As-Built)

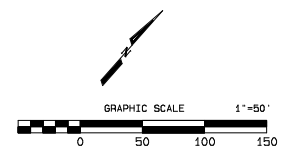
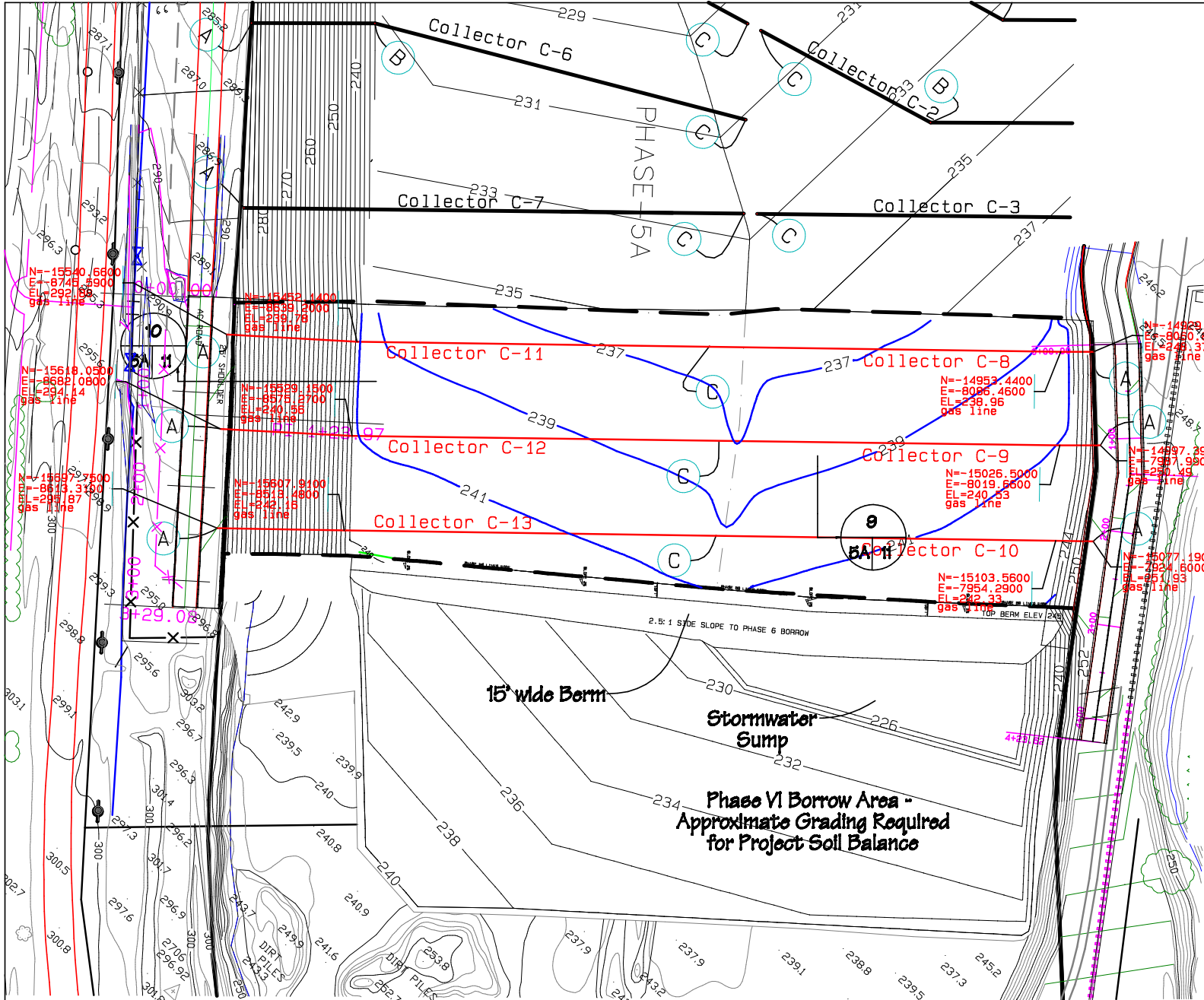
40



No.	Revision	Date	By
1	Update Topo for Construction Area	10/14/09	RM
2	Revise Pt VI Borrow Area (Slope Grades)	12/14/09	RM
3	Revise Pt V-B Stormwater Sump (Rain Flap)	1/23/10	RM
4	Revise Pt V-B Cover Soil Grades	3/27/10	RM
5	Revise Soil berm	11/21/10	RM
6	Approximate As-Built Grades	12/28/10	RM

A-Mehr, Inc.
Central Mass Landfill
Phase V-B And Related Improvements
Protective Soil Grades

DATE: 12/28/10
BY: RM



Legend

- Protective Soil Grades
- Proposed Borrower Grades

Notes

1. Collectors C1 to C7 are Existing
2. Collectors C8 to C13 are Proposed

Controls

See plan for revised controls

Collector	Point	Northing	Easting
C8	A	-14888.4864	-8076.8781
	C	-15166.8422	-8388.8648
C9	A	-14882.8248	-8009.7488
	C	-15235.2867	-8308.0546
C10	A	-15036.8888	-7842.8188
	C	-15308.8002	-8242.8878
C11	A	-15509.8440	-8761.8801
	C	-15166.8422	-8388.8648
C12	A	-15588.8764	-8897.7448
	C	-15235.2867	-8308.0546
C13	A	-15660.8288	-8628.8881
	C	-15308.8002	-8242.8878

No.	Revision	Date	By
1	Update Topo for Construction Area	10/14/09	RM
2	Revise Ph VI Borrow Area (Slope Grades)	12/14/09	RM
3	Revise Ph VB Cover Soil Grades	10/18/10	RM
4	As-Built Gas Collector Location	11/6/10	RM

A-Mehr, Inc.

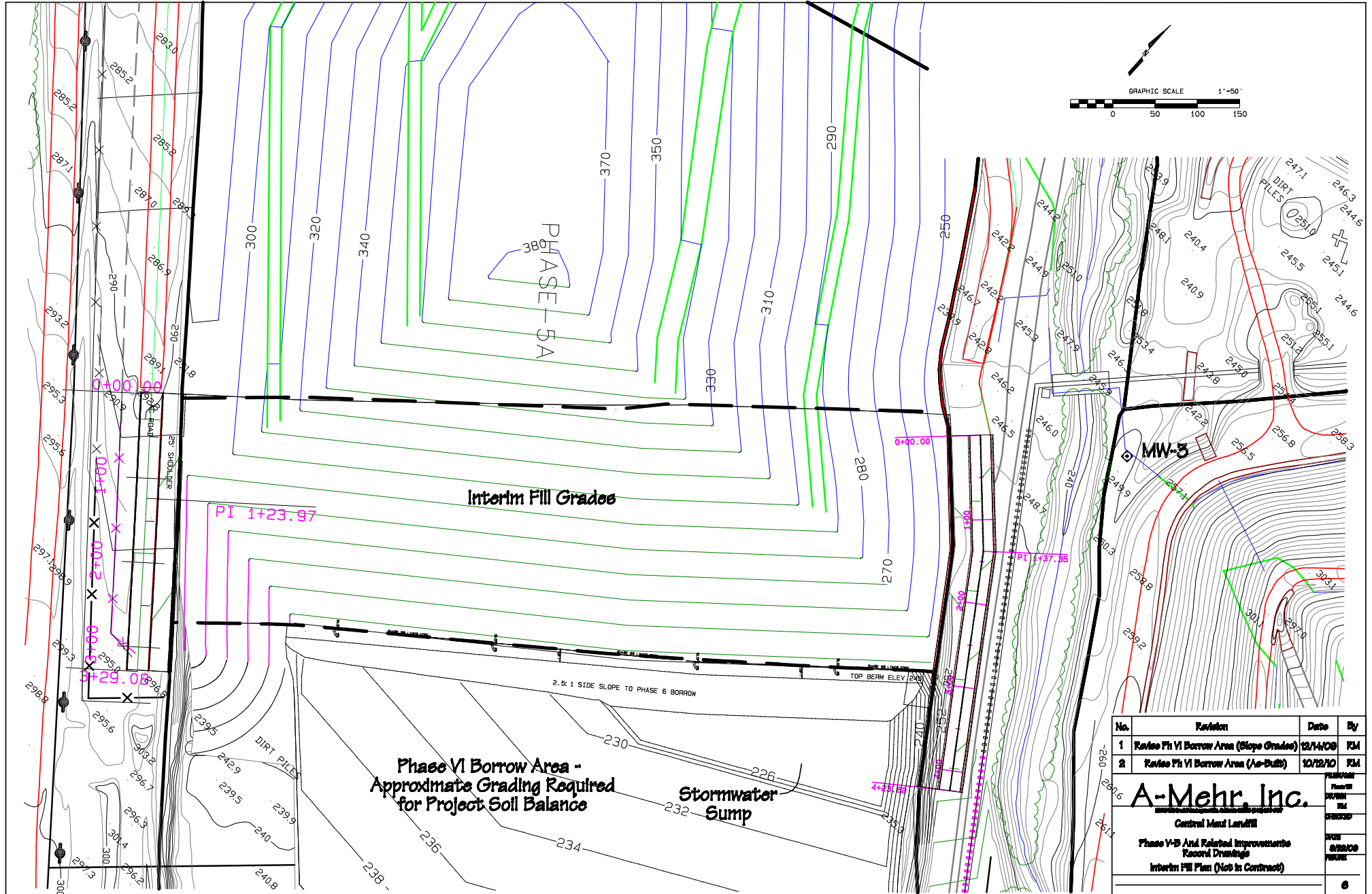
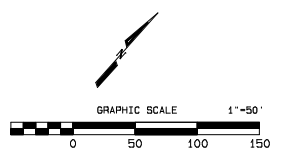
Central Main Landfill

Phase V-B And Related Improvements

Record Drawings

Horizontal Gas Collectors

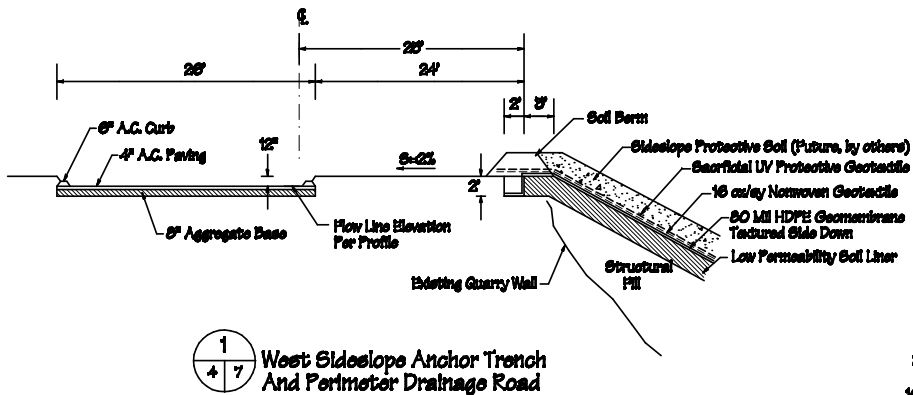
BA



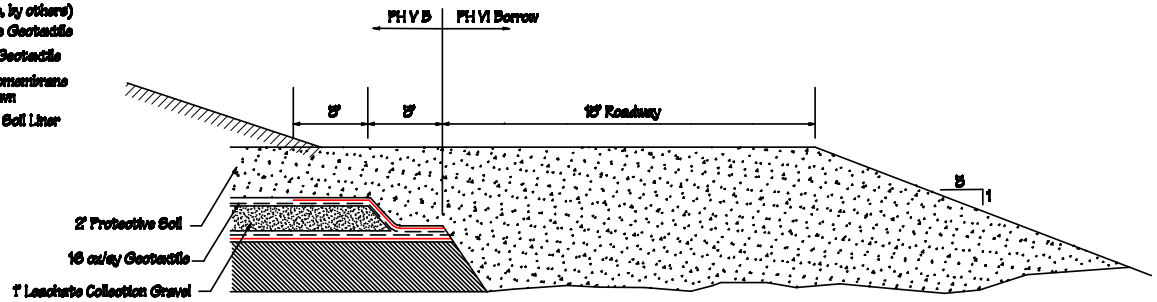
No.	Revision	Date	By
1	Revise Ph VI Borrow Area (Slope Grades)	12/14/09	KM
2	Revise Ph VI Borrow Area (As-Built)	10/12/10	KM

A-Mehr, Inc.
 Central Mass Landfill
 Phase V-B And Related Improvements
 Record Drawings
 Interim Fill Plan (Not In Contract)

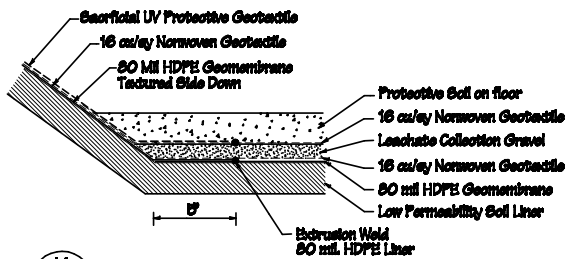
6



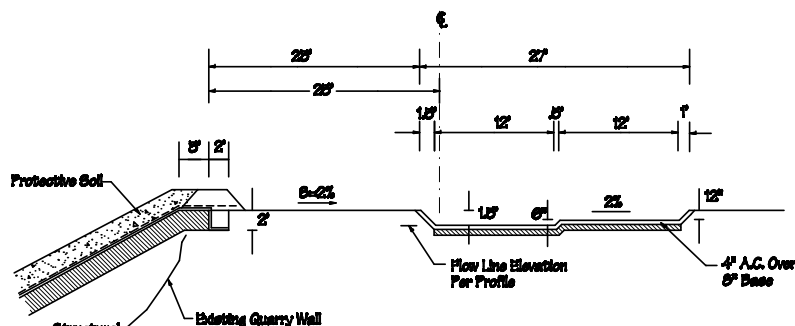
1
4 7
West Slope Anchor Trench
And Perimeter Drainage Road



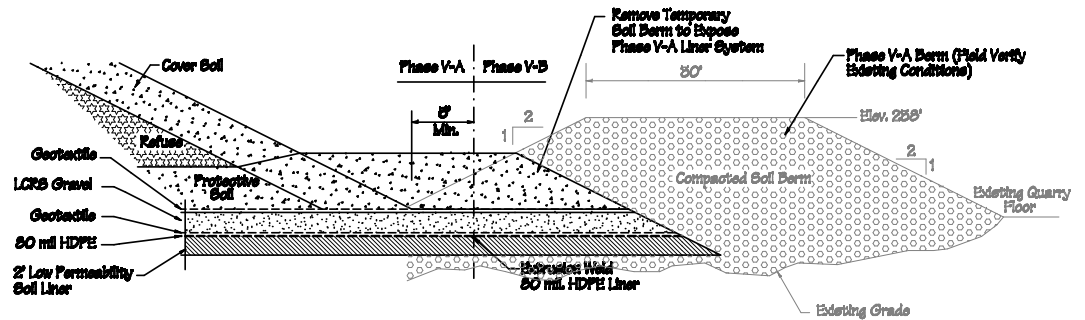
5
4 7
Temporary Liner Termination
And Separation Berm (As-Built)



1A
4 7
Detail At Toe of Slope



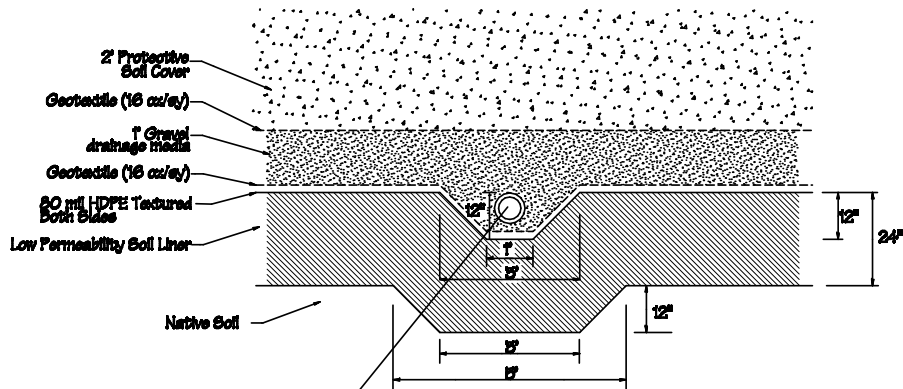
2
4 7
East Slope and Perimeter Drainage Road



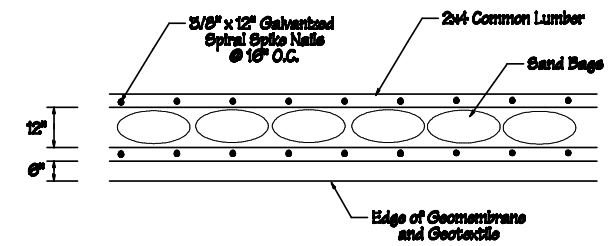
4
4 7
Connection to Phase V-A Liner
(Phase V-B Protective Soil and
Rain Flap Not Shown for Clarity)

No.	Revision	Date	By
1	Add Sacrificial UV Protective Geotextile	1/28/10	PM
2	As-Built Rain Flap Connection Detail	11/6/10	PM

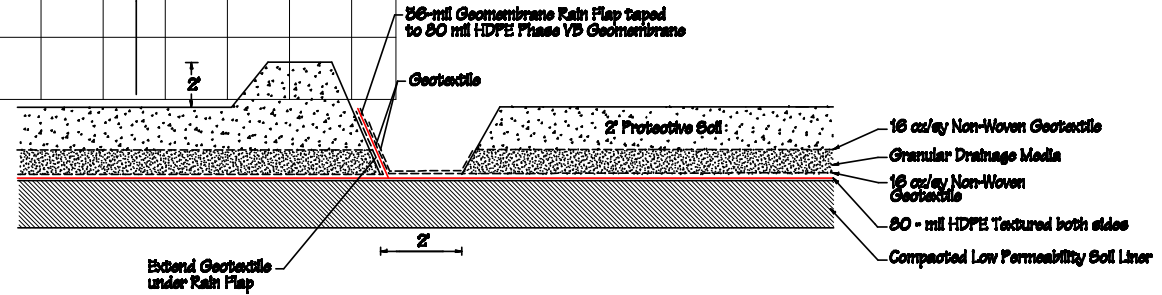
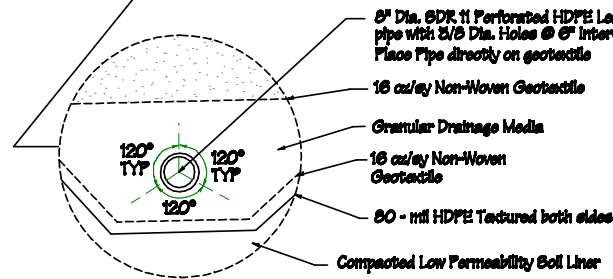
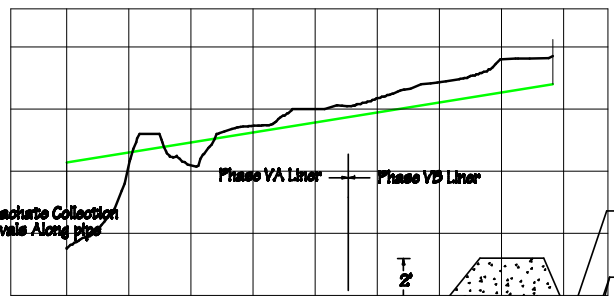
A-Mehr, Inc.
Central Mass Landfill
Phase V-B And Related Improvements
Record Drawings
Liner Details 1



5
4 BA LCRS Trench & Pipe



6
4 BA Temporary Liner Termination at Side Slope

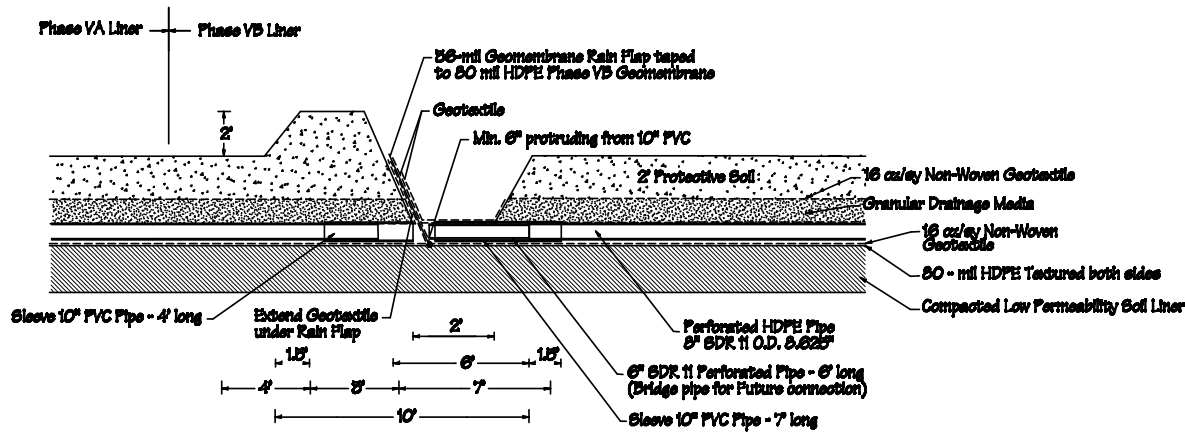


7
5 BA As-Built Rain flap Installation

No.	Revision	Date	By
1	As-Built Rain Flap Connection Detail	11/24/00	EM

A-Mehr, Inc.
 Central Mill Landfill
 Phase V-B And Related Improvements
 Record Drawings
 Liner Details 2

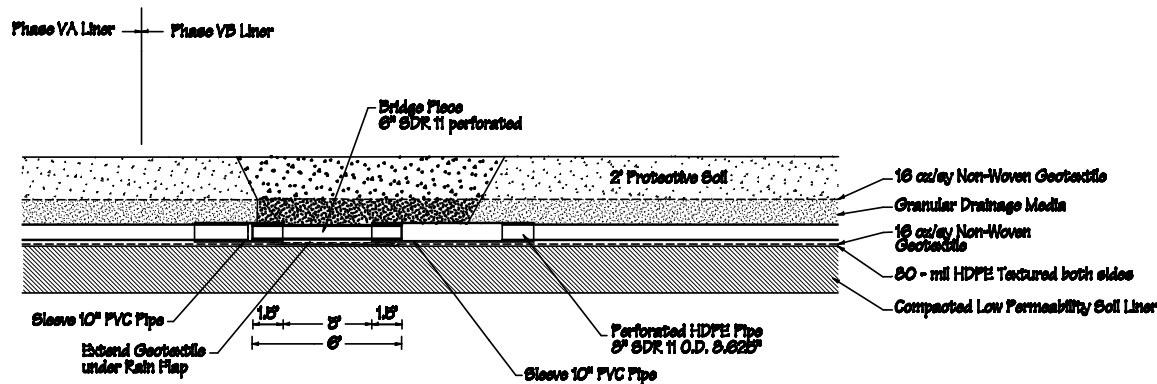
Phase VB
 DRAWN
 EM
 DATE
 02/22/00
 PAPER
 8A




LCRS Pipe Installation at Rain Flap

Rain Flap Installation

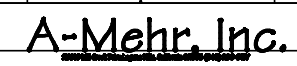
1. Install liner system in phase V-B a minimum of 10' beyond rain flap location.
2. Tape rain flap to HDPE liner as shown, using tapecoat TC mastic sealant.
3. Complete phase V-B liner and LCRS gravel installation.
4. Overlap phase V-B cushion layer fiber geotextile over rain flap before installing protective cover soil.

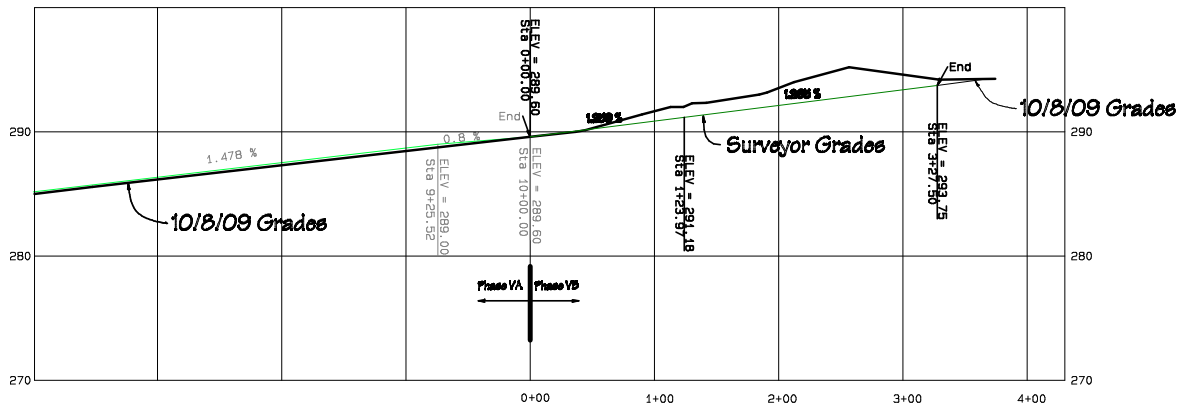
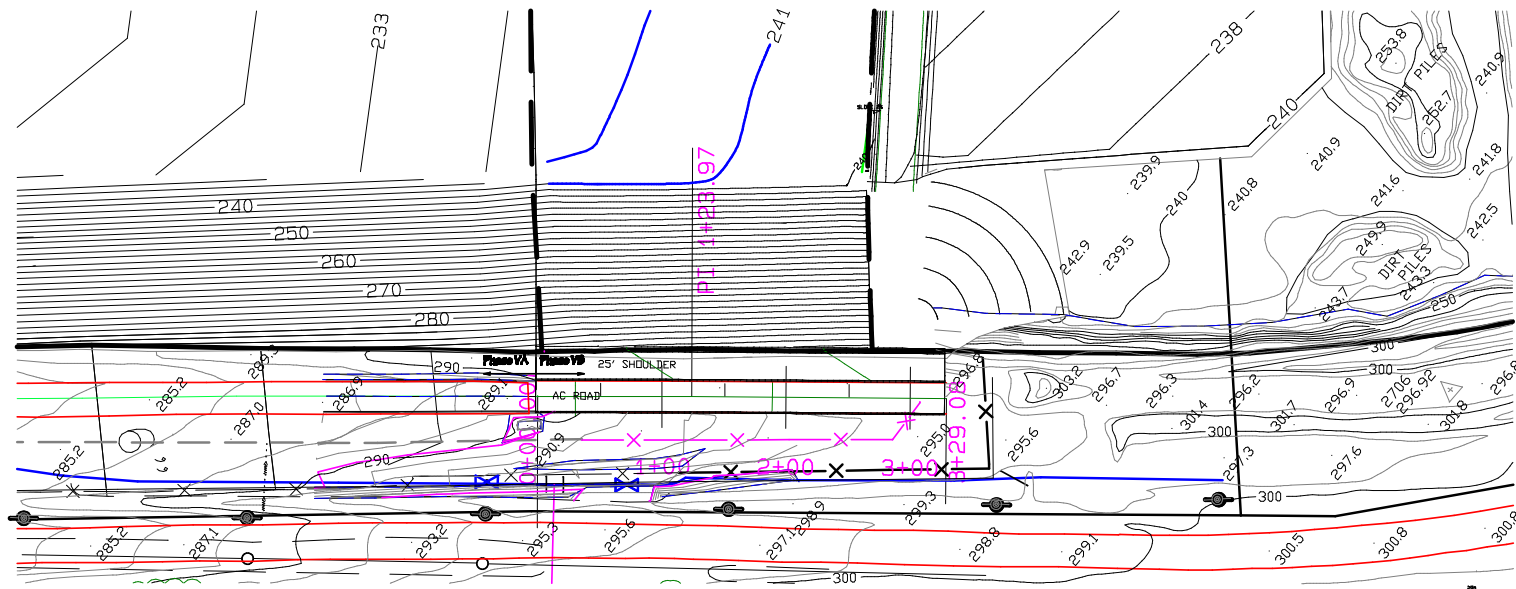


Detail 2 - Future Connection of LCRS Pipes After Rain Flap Removal

Rain Flap at LCRS Pipe Installation

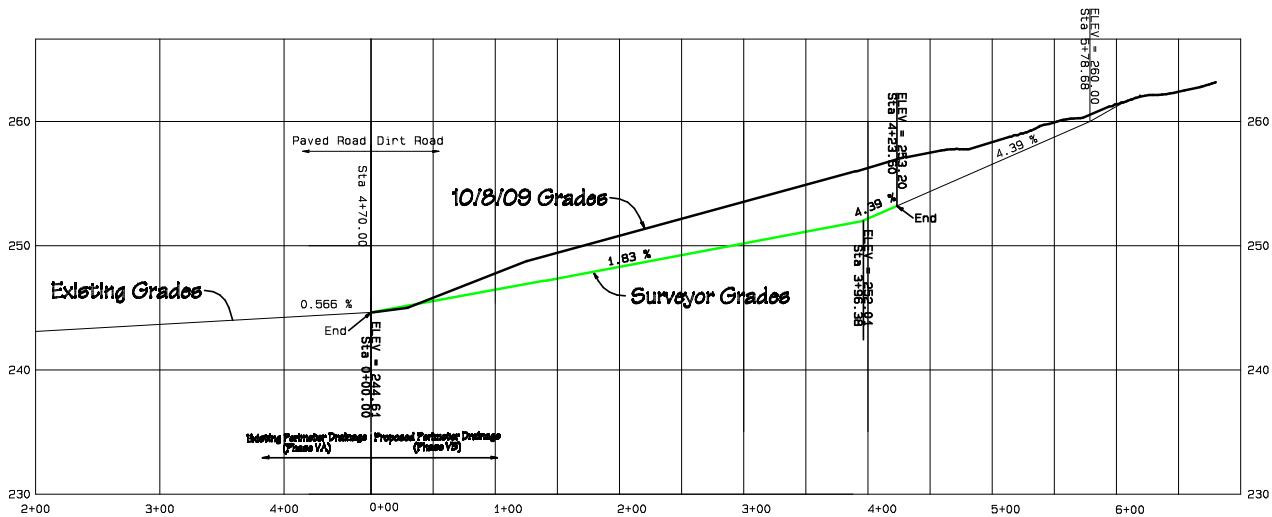
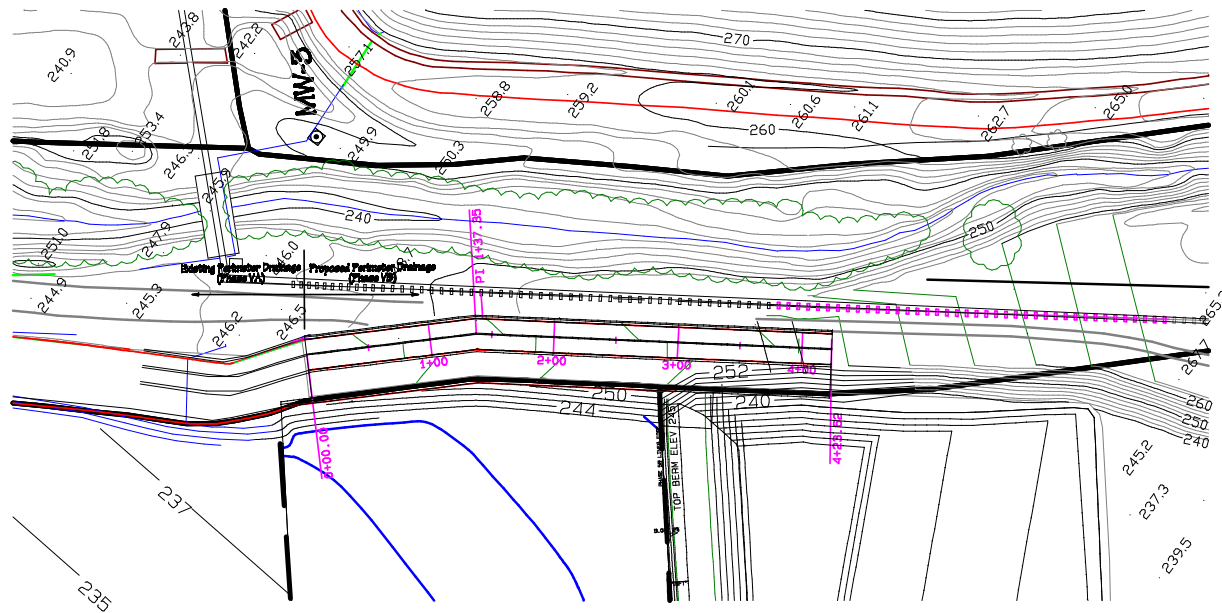
1. Place HDPE Rub Sheet under phase V-A pipe in area of rain flap installation.
2. Leave 12\"/>

No.	Revision	Date	By
1	As-Built Rain Flap Connection Detail	11/8/10	EM
			
Central Metal Landfill Phase V-B And Related Improvements Record Drawings Liner Details B			
			8B



West Perimeter Drainage Plan & Profile

No.	Revision	Date	By
1	Update Topo for Construction Area	10/14/08	KM
2	Revise Ph VB Area (As-Built)	10/22/10	KM
A-Mehr, Inc. <small>www.a-mehr.com</small> Central Mass Landfill Phase V-B And Related Improvements Record Drawings West Perimeter Drainage Plan & Profile			
			9

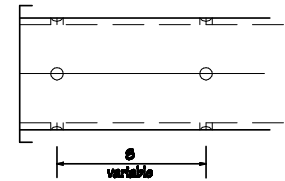
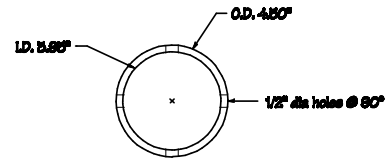
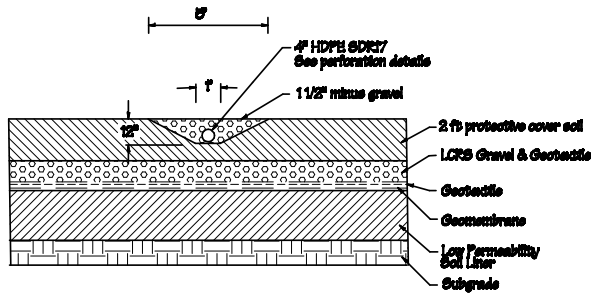


East Perimeter Drainage Plan & Profile

No.	Revision	Date	By
1	Update Topo for Construction Area	10/14/08	KM
2	Revise Ph VI Borrow Area (Slope Grades)	12/14/08	KM
B	Revise Ph VB Area (As-Built)	10/22/10	KM

A-Mehr, Inc.
 Central Mass Landfill
 Phase V-B And Related Improvements
 Record Drawings
 East Perimeter Drainage Plan & Profile

10

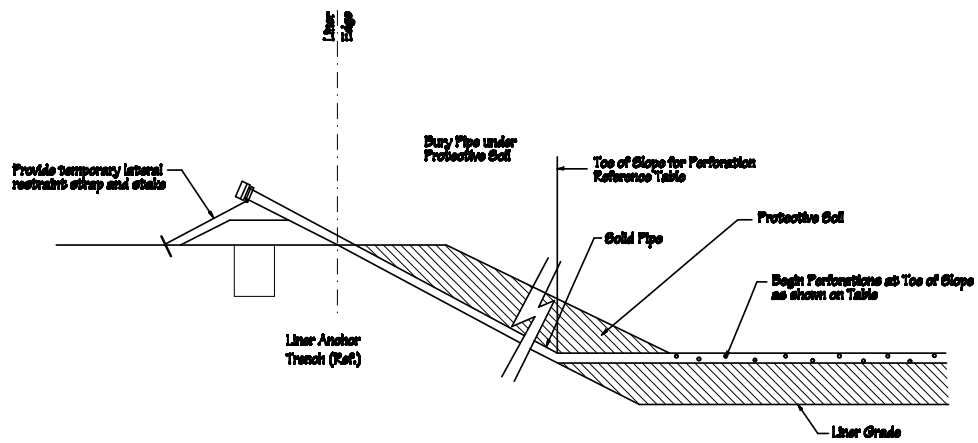


Spacing between holes (4 holes @ 80") shall vary according to distance from toe of slope as shown below

9 Horizontal Gas Collector
BA 11

PERFORATION INTERVALS - MEASURED FROM TOE OF SLOPE

Collector No.	C-8	C-9	C-10	C-11	C-12	C-13
Total Length on Floor	365	350	330	305	280	260
No Perforations	From	0	0	0	0	0
	To	50	50	50	0	0
Total Perforated Length	315	300	280	265	280	260
Spacing S = 20"	From	50	50	50	0	0
	To	140	150	150	110	110
Spacing S = 15"	From	140	150	150	110	110
	To	210	220	220	180	180
Spacing S = 8"	From	210	220	220	180	180
	To	270	280	280	260	270
Spacing S = 6"	From	270	280	280	260	270
	To	320	330	330	310	320
Spacing S = 3"	From	320	330	330	310	320
	To	365	350	350	335	350



10 Gas Collector Termination (Typical)
BA 11

A-Mehr, Inc.
 Central Mass Landfill
 Phase V-B And Related Improvements
 Horizontal Gas Collector Details

REVISION
 Phase V-B
 DRAWN
 GML
 CHECKED
 DATE
 02/21/08
 PAGES
 11