

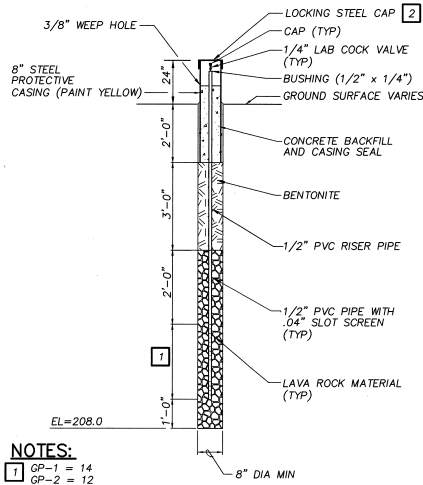
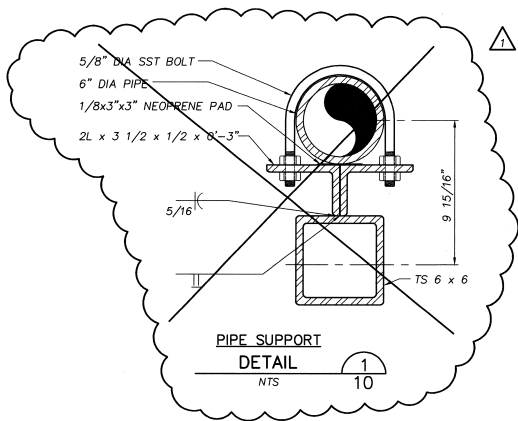
4-17-98  
 THIS WORK WAS PREPARED BY ME  
 OR UNDER MY SUPERVISION.  
 PROJECT MANAGER  
 PARAMETRIX, Inc.



COUNTY OF MAUI, HAWAII DEPT. OF PUBLIC WORKS CENTRAL MAUI SANITARY LANDFILL PHASE IV - A EXPANSION		PER CHANGE ORDER #5 7/9/98 DATE	NO.	DATE	REVISION	BY
USCM SE ER CRK CA APD	1.	7/9/98	NO.	DATE	REVISION	BY
SHEET: 10 OF 20 DATE: JUNE 98 FILE NO. 19880801						

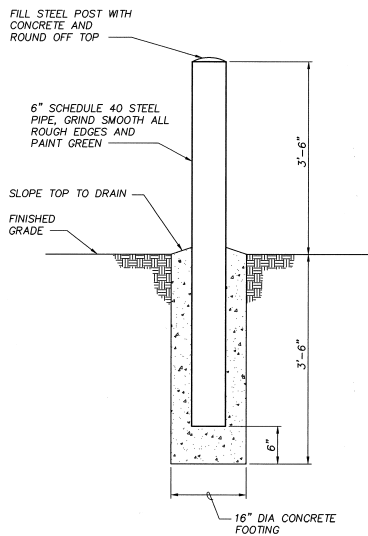
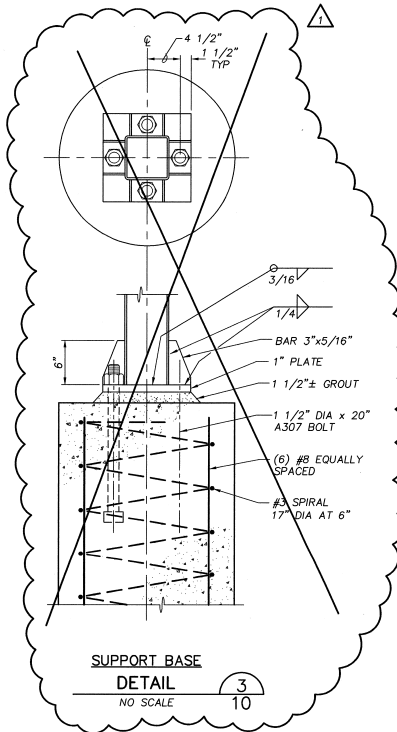
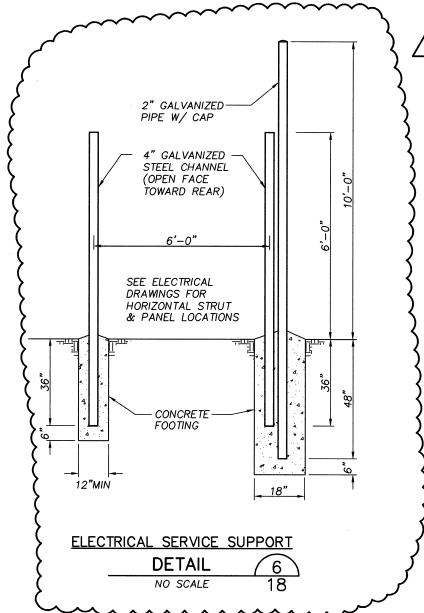
VERIFY SCALES  
 DRAWN BY: ONE (1) ONLY ON ORIGINAL DRAWING  
 CHECKED BY: ONE (1) ONLY ON ORIGINAL DRAWING  
 DESIGNED BY: ONE (1) ONLY ON ORIGINAL DRAWING  
 PROJECT NO. 19880801  
 SHEET NO. 10 OF 20

Parametrix, Inc. "Quality Service Through Employee Ownership"  
 1331 First Avenue  
 Suite 200  
 Portland, OR 97202  
 Phone: (503) 525-8800  
 Fax: (503) 525-8844



**NOTES:**

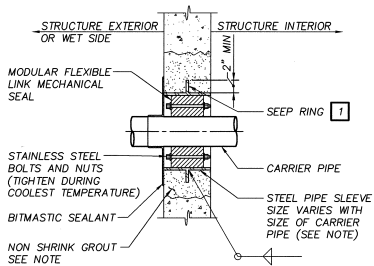
- 1 GP-1 = 14  
GP-2 = 12  
GP-3 = 8
- 2 INSTALL 3 GUARD POSTS PER DETAIL 4 AROUND EACH GAS PROBE, TO BE LOCATED IN THE FIELD BY THE CQA ENGINEER.



THIS WORK WAS PREPARED BY ME OR UNDER MY SUPERVISION, PROJECT MANAGER  
PARAMETRIX, Inc.

COUNTY OF MAUI, HAWAII DEPT. OF PUBLIC WORKS CENTRAL MAUI SANITARY LANDFILL PHASE IV-A EXPANSION		PER CHANGE ORDER #5 7/9/98		NO. DATE NO. DATE	
DRAWN BY: SE CHECKED BY: RR APPROVED BY: CA	PROJECT NO.: 19880812	SHEET NO.: 11	OF: 20	DATE: JUNE 98	FILE NO.: 19880812
<b>MISCELLANEOUS DETAILS</b>					
VERIFY SCALES BAR IS ONE INCH ON ORIGINAL DRAWING O IF NOT ONE INCH ON THIS SHEET, ADJUST SCALE ACCORDINGLY Parametrix, Inc. "Quality Service Through Employee Ownership" 1521 Pine Street Seattle, WA 98101 (206) 462-0880 8008 U.S. Washington Ave. NE Redmond, WA 98053 (206) 882-0880 19400 Redmond Rd. #200 Redmond, WA 98053 (206) 882-0880 4300 Alameda Ave. #222 Portland, OR 97206 (503) 377-0012					





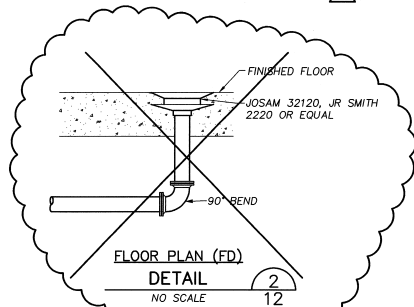
**NOTE:**

1 AT EXISTING OR PRECAST WALLS CORE DRILL HOLE TO SUIT LINK SEAL AND OMIT PIPE SLEEVE, SEEP RING AND NON SHRINK GROUT.

**PRECAST CONCRETE WALL PENETRATION**

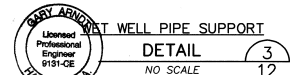
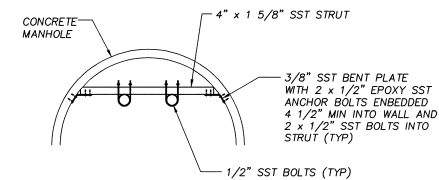


DETAIL 1  
NO SCALE 12



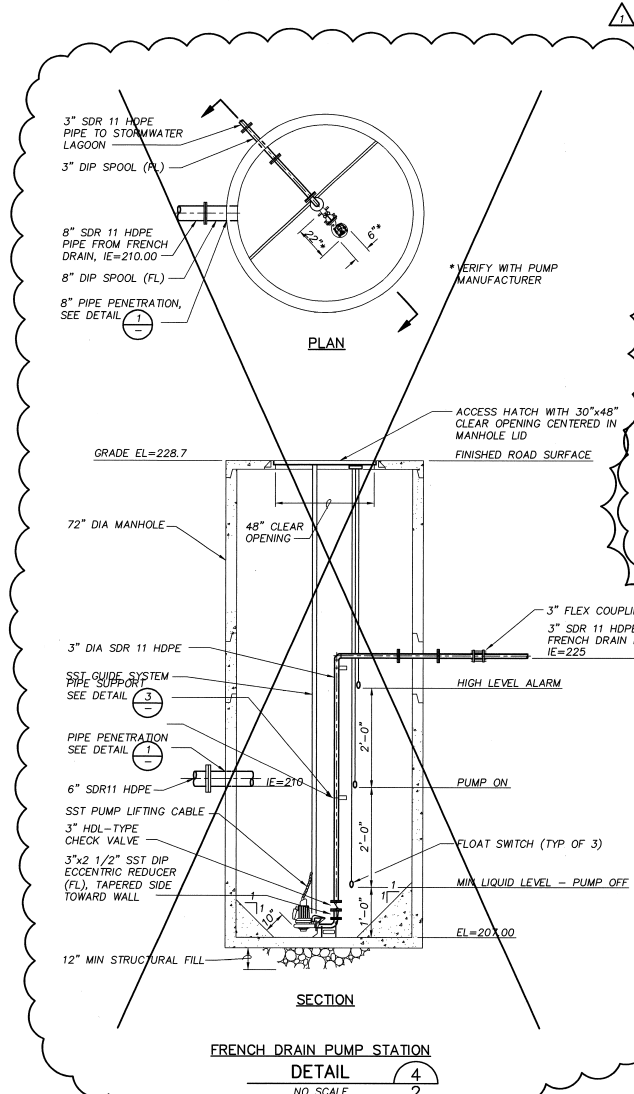
**FLOOR PLAN (FD)**

DETAIL 2  
NO SCALE 12

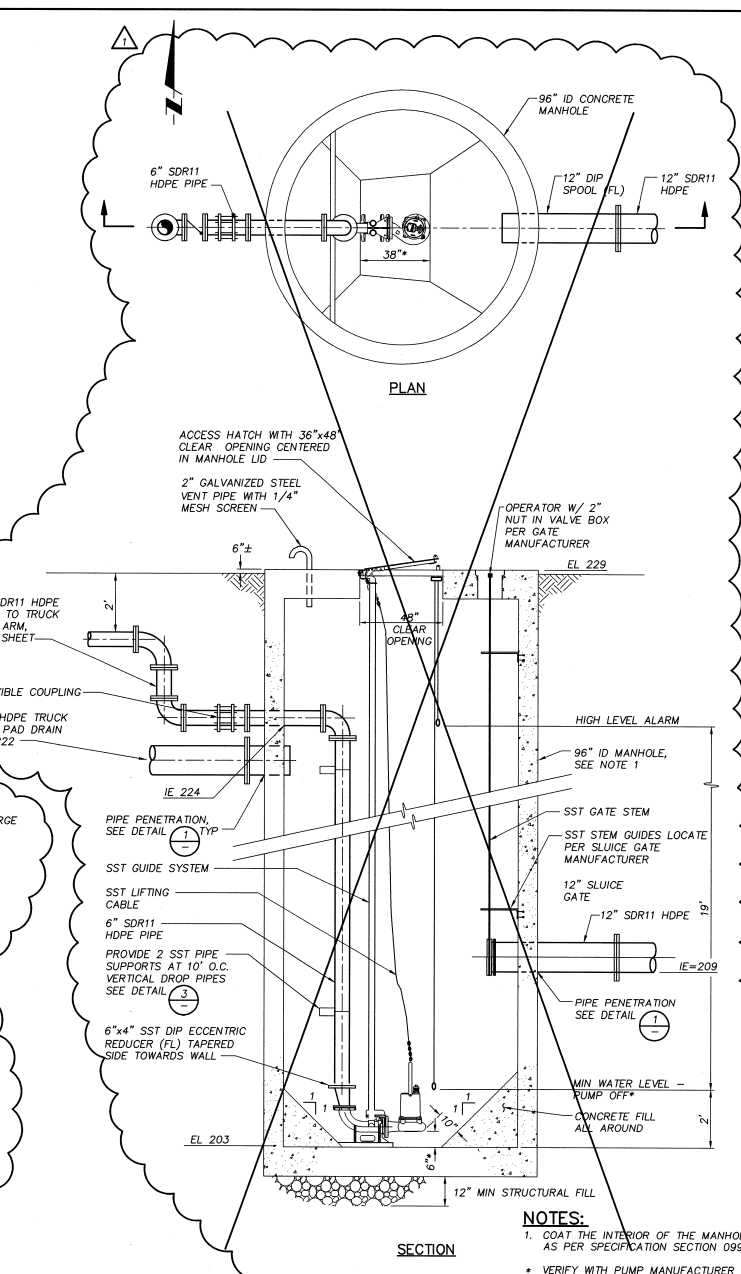


DETAIL 3  
NO SCALE 12

9-17-98  
THIS WORK WAS PREPARED BY ME OR UNDER MY SUPERVISION.  
PROJECT MANAGER  
PARAMETRIX, Inc.



FRENCH DRAIN PUMP STATION  
DETAIL 4  
NO SCALE 12



TRUCK FILL PUMP STATION  
DETAIL 5  
1/2\"/>

**NOTES:**  
1. COAT THE INTERIOR OF THE MANHOLE AS PER SPECIFICATION SECTION 09900  
\* VERIFY WITH PUMP MANUFACTURER

PARAMETRIX, Inc. "Quality Service Through Employee Ownership"

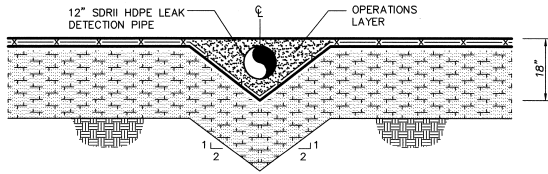
1331 Type Avenue  
9000 L.A. Washington Blvd. NE  
Ft. Collins, CO 80526  
Ft. Collins, CO 80526  
Ft. Collins, CO 80526

PAR 88 ONE INCH ON 11\"/>

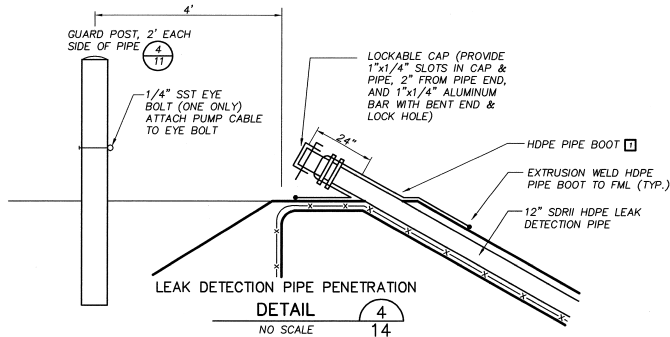
PER CHANGE ORDER #5  
7/29/98  
NO. DATE REVISION  
1. 7/29/98  
DR RRR  
CHK CA  
APP JAF/D  
ISSN: SC  
DEPT. OF PUBLIC WORKS & WASTE MANAGEMENT  
CENTRAL VALLEY SANITARY JUNCTION  
TRUCK FILL AND FRENCH DRAIN  
-AND- DETAILS-  
MANHOLE DETAILS

SHEET: 13 OF: 20  
DATE: JUNE 98  
FILE NO: 49880804

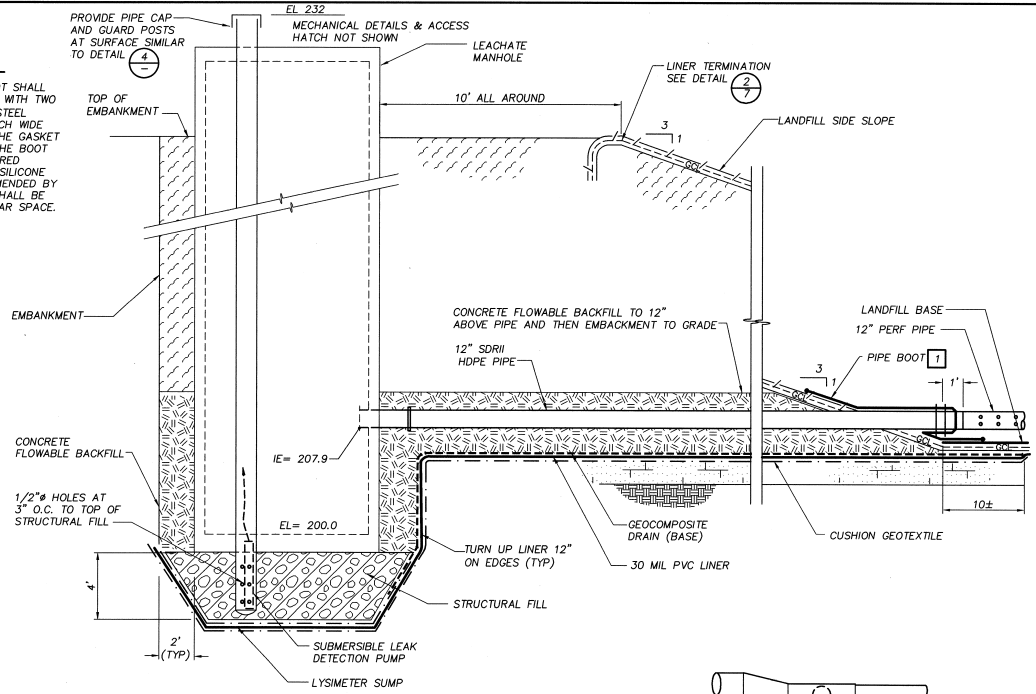




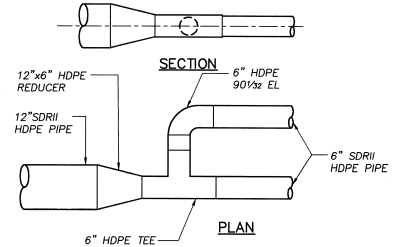
**LEAK DETECTION TRENCH SECTION**  
NTS



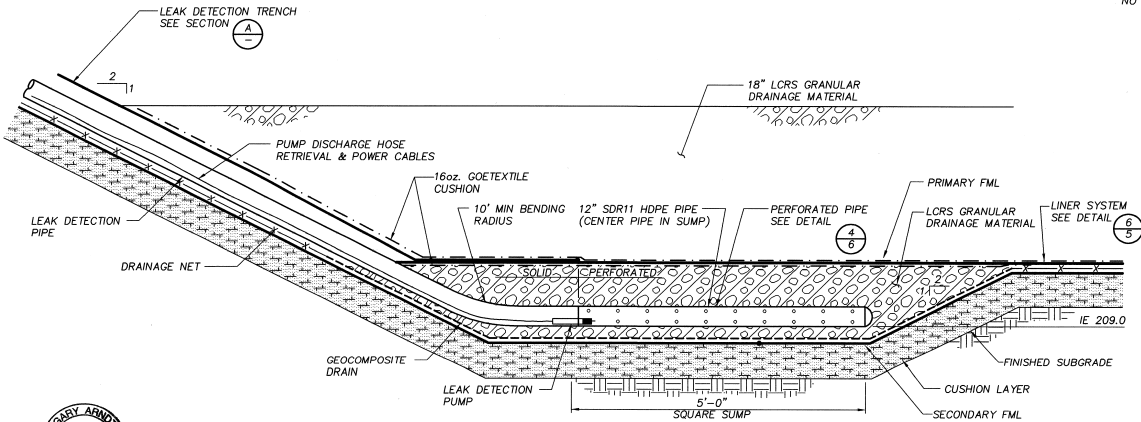
**GENERAL NOTE:**  
1 EACH HDPE PIPE BOOT SHALL BE SECURED TO PIPE WITH TWO (2) 1/2" STAINLESS STEEL CLAMPS WITH A 6-INCH WIDE NEOPRENE GASKET. THE GASKET SHALL BE BETWEEN THE BOOT AND PIPE AND CENTERED UNDER THE CLAMPS. SILICONE CAULKING AS RECOMMENDED BY THE MANUFACTURER, SHALL BE FILLED IN THE ANNULAR SPACE.



**LEACHATE PUMP STATION MANHOLE DETAIL**  
NO SCALE



**LEACHATE PIPING CONNECTION DETAIL**  
NO SCALE

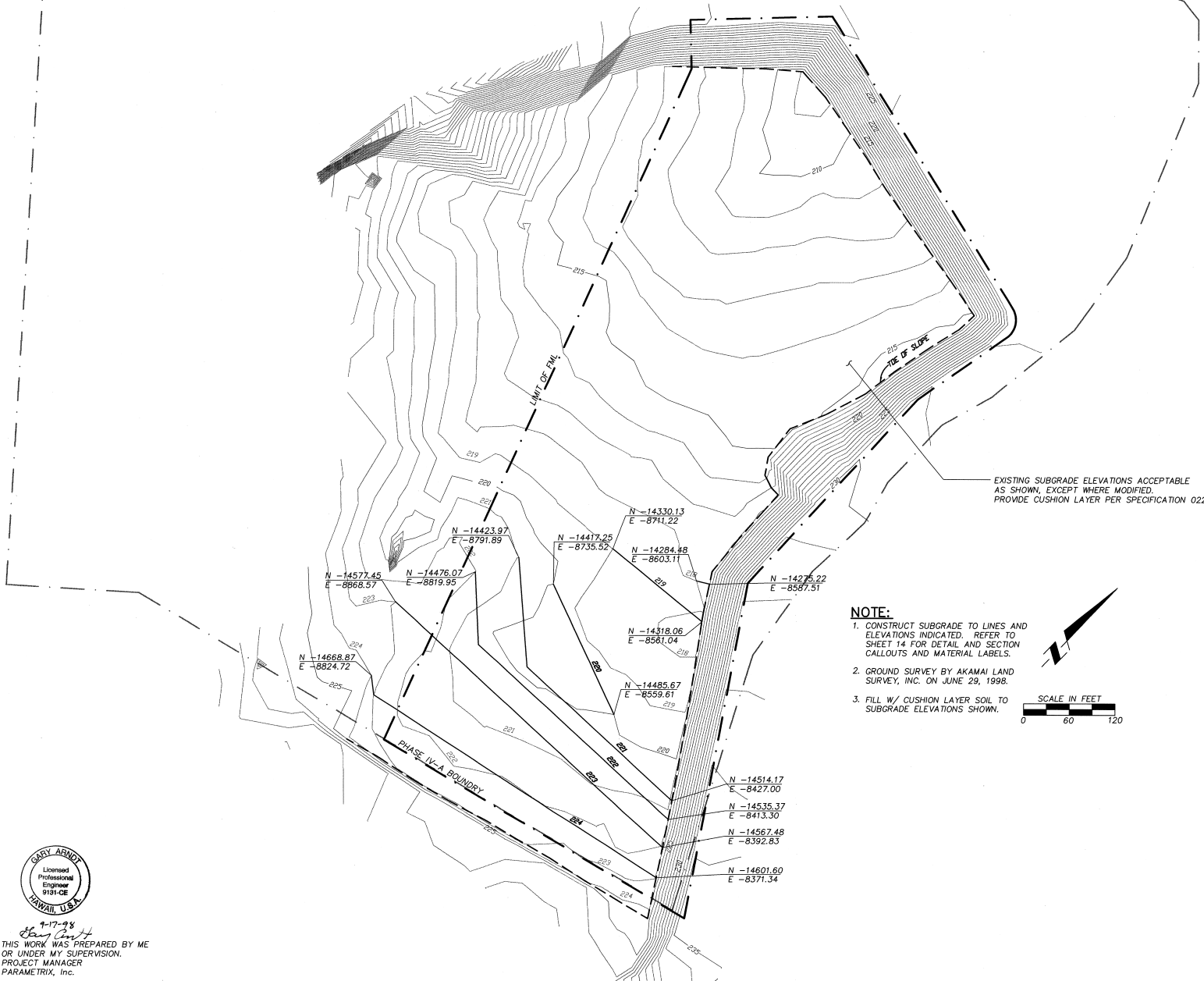


**LEAK DETECTION PIPE & SUMP DETAIL**  
NTS



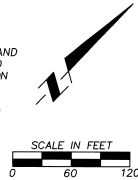
9-17-98  
THIS WORK WAS PREPARED BY ME OR UNDER MY SUPERVISION.  
PROJECT MANAGER  
PARAMETRIX, Inc.

VERIFY SCALES BAR IS ONE INCH ON DRAWING O 1" = 10'-0"		SHEET ADDED PER CHANGE ORDER #5 DATE NO.	REVISION BY
COUNTY OF MAUI, HAWAII DEPT. OF PUBLIC WORKS CENTRAL MAUI SANITARY LANDFILL PHASE IV-A EXPANSION	7/9/98 1		
DESIGNER BR CHECKER CA APPROVED AP'00	DATE NO.	DATE NO.	REVISION BY
MISCELLANEOUS DETAILS		SHEET: 15 OF: 20 DATE: JUNE 98 FILE NO: 19880815	



EXISTING SUBGRADE ELEVATIONS ACCEPTABLE AS SHOWN, EXCEPT WHERE MODIFIED. PROVIDE CUSHION LAYER PER SPECIFICATION 02232.

- NOTE:**
1. CONSTRUCT SUBGRADE TO LINES AND ELEVATIONS INDICATED. REFER TO SHEET 14 FOR DETAIL AND SECTION CALLOUTS AND MATERIAL LABELS.
  2. GROUND SURVEY BY AKAMAI LAND SURVEY, INC. ON JUNE 29, 1998.
  3. FILL W/ CUSHION LAYER SOIL TO SUBGRADE ELEVATIONS SHOWN.



9-17-98  
 THIS WORK WAS PREPARED BY ME OR UNDER MY SUPERVISION.  
 PROJECT MANAGER  
 PARAMETRIX, Inc.

<b>VERIFY SCALES</b> BAR IS ONE INCH ON ORIGINAL DRAWING THIS SHEET, SCALE 1" = 40'		<b>PARAMETRIX, Inc.</b> "Quality Service Through Employee Ownership" 15311 Pacific Highway Suite 200 Bellevue, WA 98005 Phone: (206) 835-8800 Fax: (206) 835-8811		16345 Pacific Highway, Suite 400 Tukwila, WA 98148 Phone: (206) 822-8800 Fax: (206) 822-8811	
COUNTY OF MAUI, HAWAII DEPT. OF PUBLIC WORKS CENTRAL MAUI SANITARY LANDFILL PHASE IV-A EXPANSION <b>REVISED SUBGRADE PLAN</b>		SHEET ADDED PER CHANGE ORDER #5		REVISION NO. DATE	
USGN BR CRK JPV/D		7/9/98 1		BY	
SHEET: <b>16</b> OF: 20 DATE: <b>JUNE 98</b> FILE NO. <b>19880813</b>					

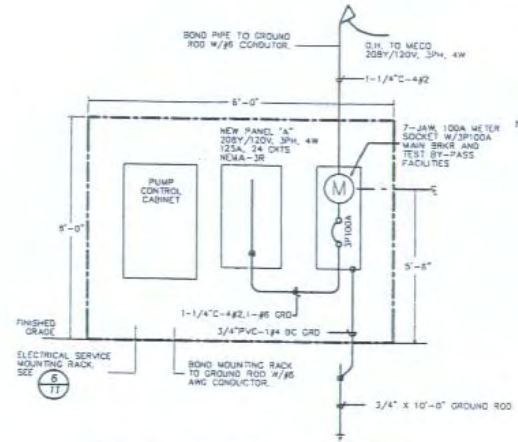
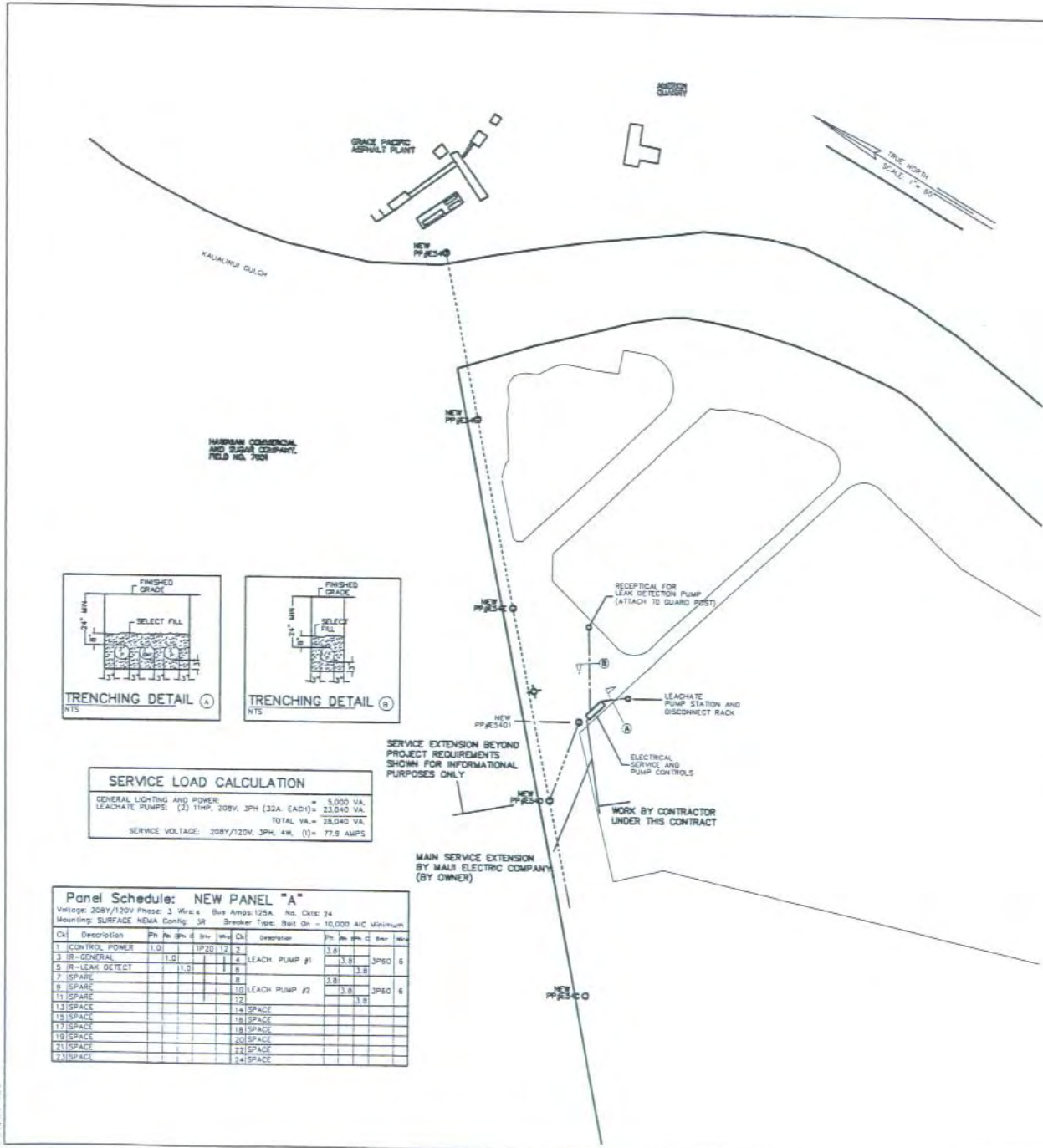






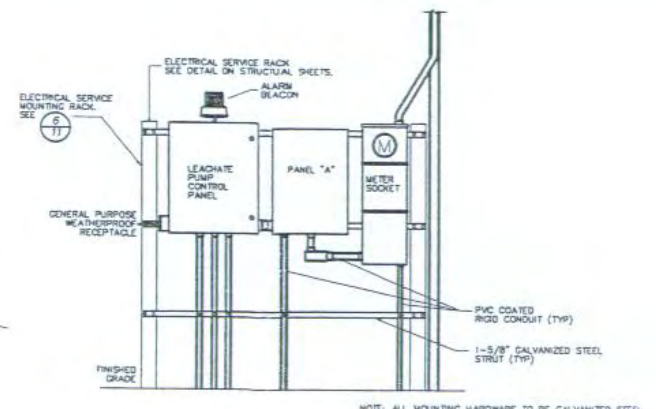
THIS WORK WAS PREPARED BY ME OR UNDER MY SUPERVISION.

VERIFY SCALES  
 HAS & INC. 840 0th St  
 KAILUA, HAWAII 96734  
 ORIGINAL DRAWING  
 PROJECT NO. 2000-0003  
 SHEET NO. 18 OF 200  
 DATE: JUNE 17, 2003  
 FILE NO. 2000-0003-0133  
 PROJECT: KALAWANUI DITCH  
 PROJECT NO. 2000-0003  
 SHEET NO. 18 OF 200  
 DATE: JUNE 17, 2003  
 FILE NO. 2000-0003-0133

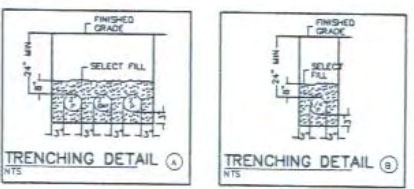


NOTE: PAINT METER SOCKET AND ELECTRICAL PANEL "A" WITH A GRAY POLYURETHANE PAINT (2 COATS MINIMUM).

**SINGLE LINE DIAGRAM**  
 Not To Scale



**SERVICE ELEVATION**  
 Scale: 3/4" = 1'-0"



**SERVICE LOAD CALCULATION**

GENERAL LIGHTING AND POWER = 5,000 VA  
 LEACHATE PUMPS: (2) 1HP, 208V, 3PH (32A EACH) = 23,040 VA  
 TOTAL VA = 28,040 VA  
 SERVICE VOLTAGE: 208Y/120V, 3PH, 4W, (1) = 77.8 AMPS

**Panel Schedule: NEW PANEL "A"**  
 Voltage: 208Y/120V Phase: 3 Wires: 4 Bus Amps: 125A No. Ckt: 24  
 Mounting: SURFACE NEKA Config: 39 Breaker Type: Bolt On - 10,000 AIC Minimum

Ckt	Description	Ph	Vol	Am	Cl	Int	Min	Max	Int	Min	Max
1	CONTROL POWER	1.0			1P20	12			3.0		
3	R-GENERAL	1.0		1.4					3.0		JP60 6
5	R-LEAK DETECT	1.0		1					3.0		
7	SPARE								5.0		
8	SPARE								3.0		JP60 6
11	SPARE								3.0		
13	SPACE										
15	SPACE										
17	SPACE										
19	SPACE										
21	SPACE										
23	SPACE										

DATE: JUNE 17, 2003



