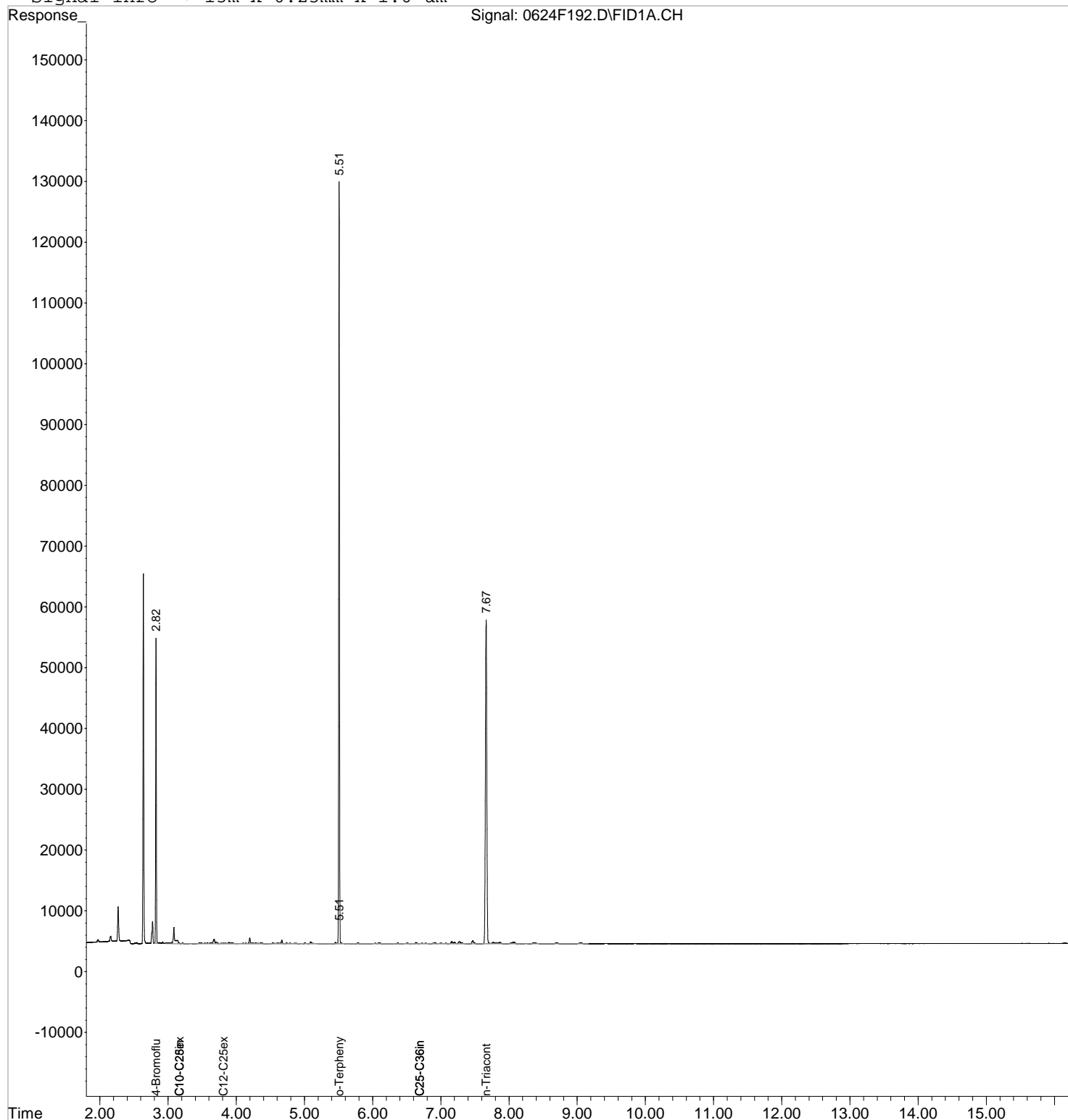


Data File : J:\GC21\DATA\062420F-DRO\0624F192.D Vial: 29
Acq On : 25 Jun 2020 9:15 pm Operator: TAP
Sample : K2005164-001 Inst : GC21
Misc : Multiplr: 1.00
IntFile : rteint.p
Quant Time: Jun 26 12:07 2020 Quant Results File: 102119F.RES

Quant Method : J:\GC21\METHODS\102119F.M (RTE Integrator)
Title : 8015/NWTPH/AK SVF MJ257 CAL16158
Last Update : Fri Jun 26 12:07:01 2020
Response via : Single Level Calibration
DataAcq Meth : SVF_FX32.M

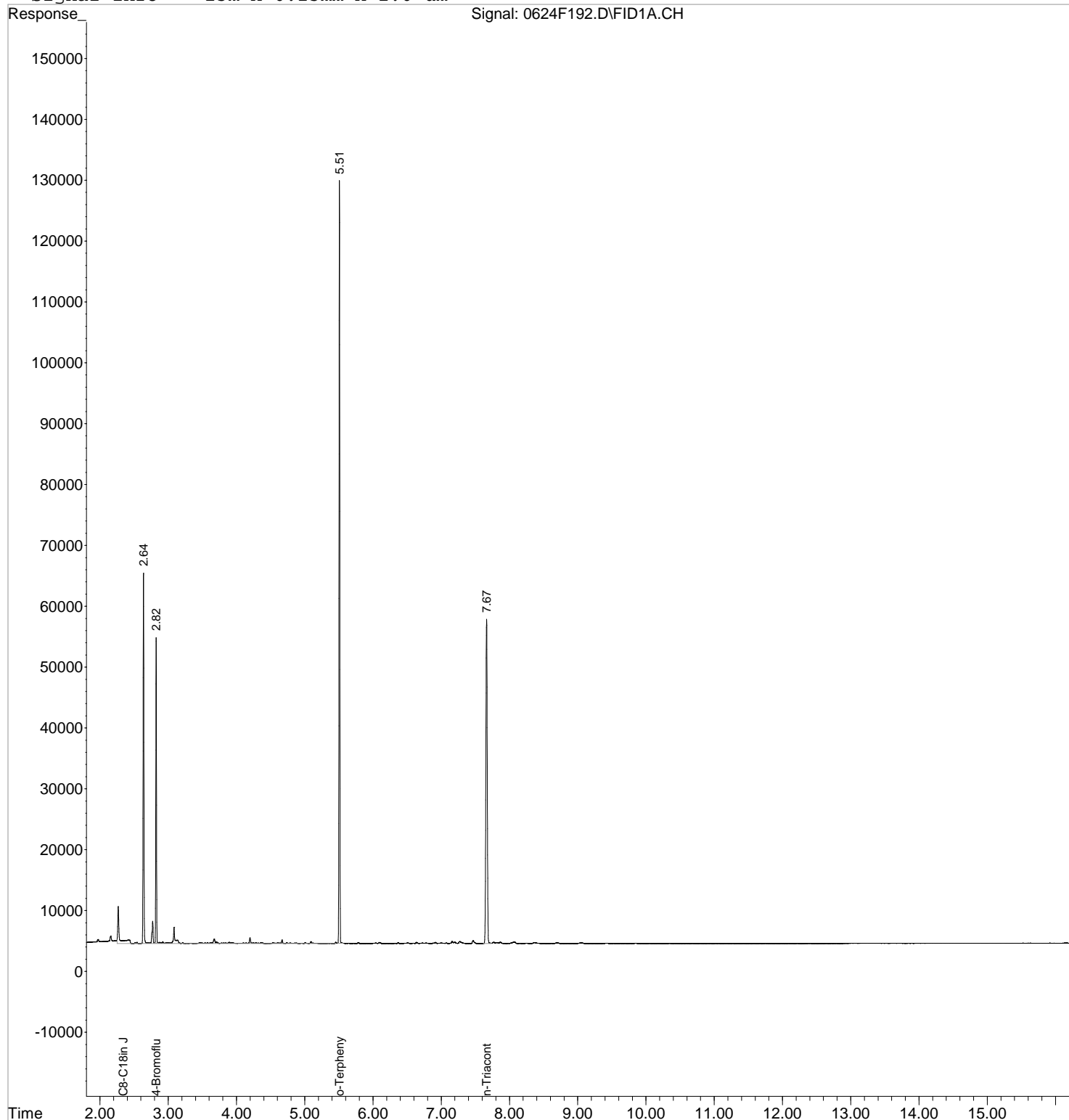
Volume Inj. : 1 uL
Signal Phase : ZB-1
Signal Info : 15m x 0.25mm x 1.0 um



Data File : J:\GC21\DATA\062420F-JP8\0624F192.D Vial: 29
 Acq On : 25 Jun 2020 9:15 pm Operator: TAP
 Sample : K2005164-001 Inst : GC21
 Misc : Multiplr: 1.00
 IntFile : rteint.p
 Quant Time: Jun 26 11:58 2020 Quant Results File: 062520FJP8.RES

Quant Method : J:\GC21\METHODS\062520FJP8.M (RTE Integrator)
 Title : JP-8 by GC/FID CAL16321
 Last Update : Fri Jun 26 11:57:04 2020
 Response via : Single Level Calibration
 DataAcq Meth : SVF_FX32.M

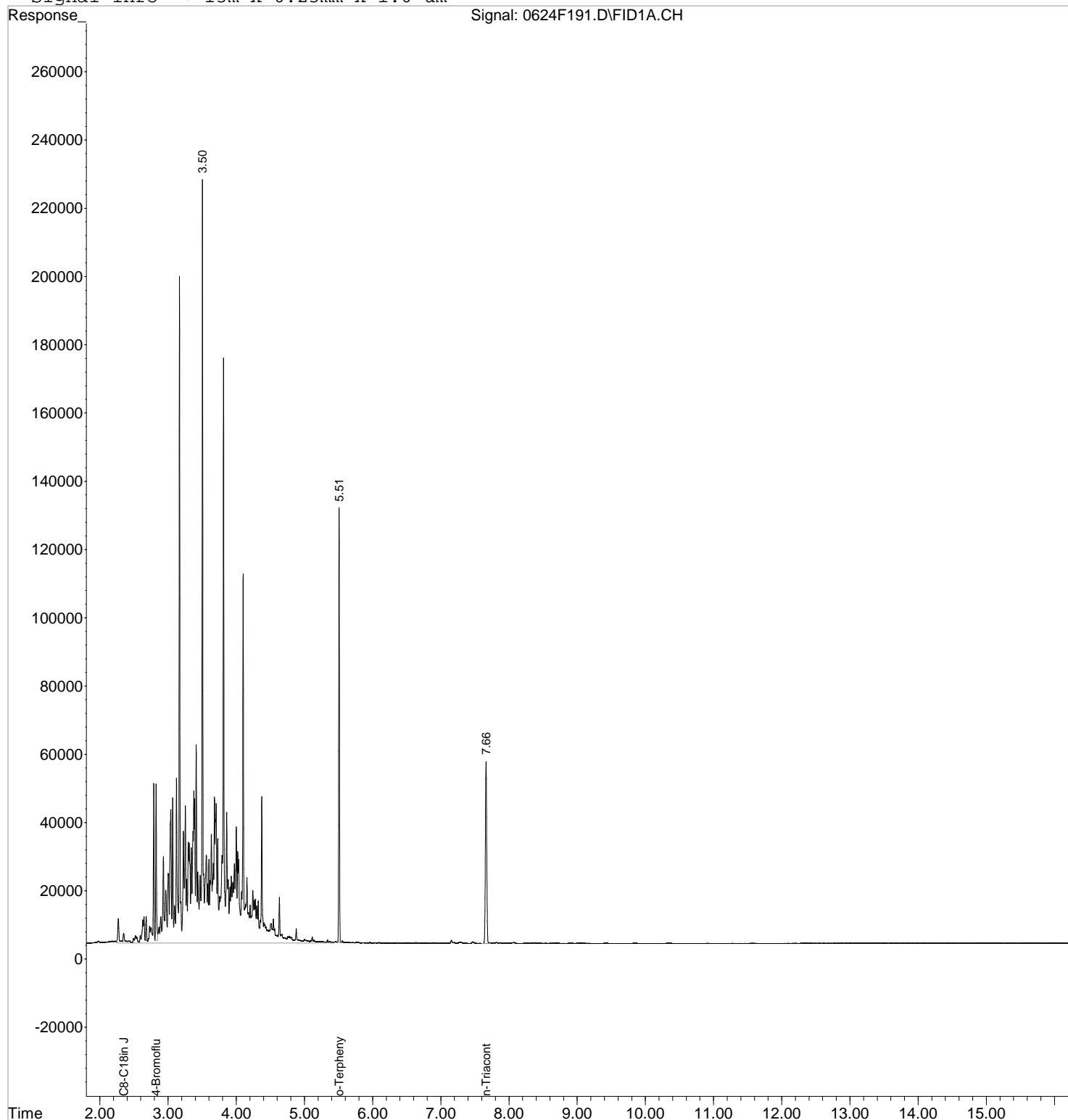
Volume Inj. : 1 uL
 Signal Phase : ZB-1
 Signal Info : 15m x 0.25mm x 1.0 um



Data File : J:\GC21\DATA\062420F-JP8\0624F191.D Vial: 28
 Acq On : 25 Jun 2020 8:52 pm Operator: TAP
 Sample : KWG2001792-02LCS Inst : GC21
 Misc : Multiplr: 1.00
 IntFile : rteint.p
 Quant Time: Jun 26 11:58 2020 Quant Results File: 062520FJP8.RES

Quant Method : J:\GC21\METHODS\062520FJP8.M (RTE Integrator)
 Title : JP-8 by GC/FID CAL16321
 Last Update : Fri Jun 26 11:57:04 2020
 Response via : Single Level Calibration
 DataAcq Meth : SVF_FX32.M

Volume Inj. : 1 uL
 Signal Phase : ZB-1
 Signal Info : 15m x 0.25mm x 1.0 um



Data File : J:\GC21\DATA\062420F-JP8\0624F187.D Vial: 25
Acq On : 25 Jun 2020 7:22 pm Operator: TAP
Sample : 8015C JP-8@1000 SVF02-88K Inst : GC21
Misc : Multiplr: 1.00
IntFile : rteint.p
Quant Time: Jun 26 11:58 2020 Quant Results File: 062520FJP8.RES

Quant Method : J:\GC21\METHODS\062520FJP8.M (RTE Integrator)
Title : JP-8 by GC/FID CAL16321
Last Update : Fri Jun 26 11:57:04 2020
Response via : Single Level Calibration
DataAcq Meth : SVF_FX32.M

Volume Inj. : 1 uL
Signal Phase : ZB-1
Signal Info : 15m x 0.25mm x 1.0 um

