


CONCRETE SAMPLE SPECIFICS		
Sample ID	1	1
Sample Location	14-UD-A-42-45-107	
Sample Dimensions	12X12 INCHES	
ON SITE VISUAL EXAMINATION		
Checks	Observations	
	Exterior	Units
Void space between concrete and liner (if any)	1/8" Void on left side, no voids in all other areas	
Biological Materials	None	
Wet or Dry	Dry	
Smell	None	
Temperature	76.9	F
Surface pH	9 to 9.5	
Structure to Electrolyte	-0.252	Volts/CSE
Concrete Resistivity	26.4 Horizontal 31.1 Vertical	k-ohm-cm k-ohm-cm
General Condition	Excellent, sound concrete with some discoloration and no cracks and no delamination	
		

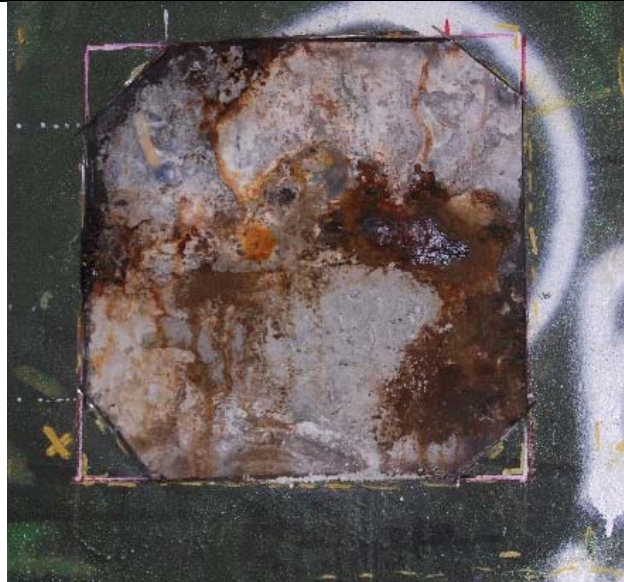
6/19/2018: 0930

CONCRETE SAMPLE SPECIFICS

Sample ID	2	2
Sample Location	14-ER-E3-12-33-40	
Sample Dimensions	12X12 INCHES	

ON SITE VISUAL EXAMINATION

Checks	Observations	
	Exterior	Units
Void space between concrete and liner (if any)	1/8" void at upper left side. Otherwise no voids.	
Biological Materials	None	
Wet or Dry	Slightly damp	
Smell	Musty, no fuel	
Temperature	80.0	F
Surface pH	10-11 corroded area 11-12 non-corroded area	
Structure to Electrolyte	-0.380	Volts/CSE
Concrete Resistivity	19.0 Horizontal 17.5 Vertical	k-ohm-cm k-ohm-cm
General Condition	Good sound condition with some minor spalling and corrosion product. Coupon took some hammering to remove	



6/19/2018: 14:00

CONCRETE SAMPLE SPECIFICS

Sample ID	3	3
Sample Location	14-ER-E3-13-7-18	
Sample Dimensions	12X12 INCHES	

ON SITE VISUAL EXAMINATION

Checks	Observations	
	Exterior	Units
Void space between concrete and liner (if any)	On left side, uneven corrosion product and a 1/16-inch void. Otherwise, no voids.	
Biological Materials	None	
Wet or Dry	Mostly dry, with some damp spots	
Smell	None	
Temperature	79.3	F
Surface pH	11-12 dry areas, 7-8 in areas with corrosion product	
Structure to Electrolyte	-0.488	Volts/CSE
Concrete Resistivity	27.8 Horizontal 31.2 Vertical	K-Ohm-cm
General Condition	Good, with some corrosion products. Corrosion product was black on the left side, and brown in some other areas. Concrete was hard and difficult to drill for powder samples. Coupons required some hammering and prying to remove after cutting.	



6/20/2018: 0800


CONCRETE SAMPLE SPECIFICS

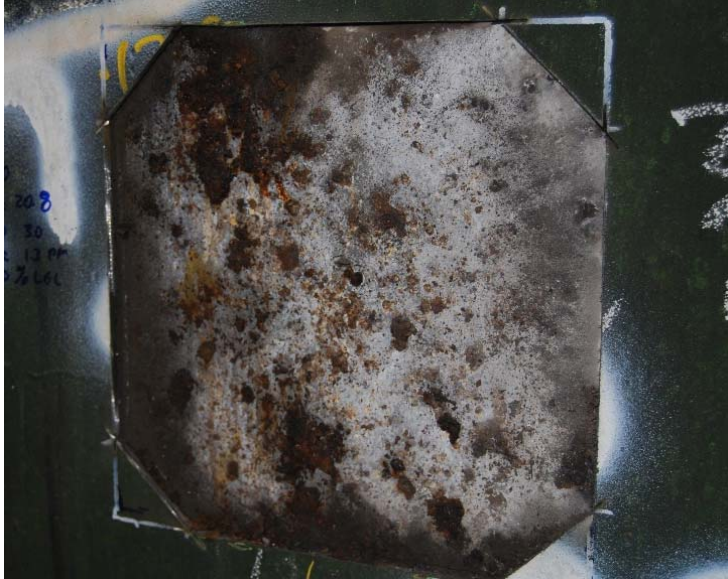
Sample ID	5	5
Sample Location	14-DA-26-15-15-8	
Sample Dimensions	12X12 INCHES	

ON SITE VISUAL EXAMINATION

Checks	Observations	
	Exterior	Units
Void space between concrete and liner (if any)	1/16" Void on top right side, no voids in all other areas	
Biological Materials	None	
Wet or Dry	Dry	
Smell	None	
Temperature	78.5	F
Surface pH	11-12	
Structure to Electrolyte	-0.220	Volts/CSE
Concrete Resistivity	19.1 Horizontal 22.0 Vertical	k-ohm-cm k-ohm-cm
General Condition	Excellent, sound concrete	



CONCRETE SAMPLE SPECIFICS		
Sample ID	6	6
Sample Location	14-BA-24-8-36-30	
Sample Dimensions	12X12 INCHES	
ON SITE VISUAL EXAMINATION		
Checks	Observations	
	Exterior	Units
Void space between concrete and liner (if any)	None, however some loose adhering grout present	
Biological Materials	None	
Wet or Dry	Dry	
Smell	None	
Temperature	77.4F	F
Surface pH	12.5	
Structure to Electrolyte	-0.387	Volts/CSE
Concrete Resistivity	Horizontal = 387 Vertical = 359	k-ohm-cm k-ohm-cm
General Condition	Concrete is sound, no delamination. There is loose adhering grout on left side and middle	
		

CONCRETE SAMPLE SPECIFICS		
Sample ID	7	7
Sample Location	14-BA-23-7-38-49	
Sample Dimensions	12X12 INCHES	
ON SITE VISUAL EXAMINATION		
Checks	Observations	
	Exterior	Units
Void space between concrete and liner (if any)	3/8" void on left side. 1/16" void on top right otherwise no voids	
Biological Materials	None	
Wet or Dry		
Smell	none	
Temperature	77.5F	F
Surface pH	9- 10	
Structure to Electrolyte		Volts/CSE
Concrete Resistivity	Horizontal = 39.3 Vertical = 42.4	k-ohm-cm k-ohm-cm
General Condition	Concrete is sound with no delamination or cracks. Some brown and black corrosion products on concrete	
		

6/20/2018: 1400

CONCRETE SAMPLE SPECIFICS

Sample ID	8	8
Sample Location	14-BA-20-13-23-4	
Sample Dimensions	12X12 INCHES	

ON SITE VISUAL EXAMINATION

Checks	Observations	
	Exterior	Units
Void space between concrete and liner (if any)	1/16" Void on left side, no voids in all other areas	
Biological Materials	None	
Wet or Dry	Dry	
Smell	None	
Temperature	80.0	F
Surface pH	11-12	
Structure to Electrolyte	-0.248	Volts/CSE
Concrete Resistivity	30.9 Horizontal 27.5 Vertical	k-ohm-cm k-ohm-cm
General Condition	Excellent, sound concrete with no cracks or delamination. Coupon had steel backing plate	




6/21/2018: 0930

CONCRETE SAMPLE SPECIFICS

Sample ID	10	10
Sample Location	14-LD-3-9-24-215	
Sample Dimensions	12X12 INCHES	

ON SITE VISUAL EXAMINATION

Checks	Observations	
	Exterior	Units
Void space between concrete and liner (if any)	None	
Biological Materials	None	
Wet or Dry	Dry	
Smell	Smells like coal tar	
Temperature	77.6	F
Surface pH	12-12.5	
Structure to Electrolyte	-0.181	Volts/CSE
Concrete Resistivity	27.3 Horizontal 38.1 Vertical	k-ohm-cm k-ohm-cm
General Condition	Excellent, sound concrete with no cracks or delamination. Coupon had to be cut into two pieces to remove. What appears to be coal tar coating present on backside of coupon and concrete.	
		

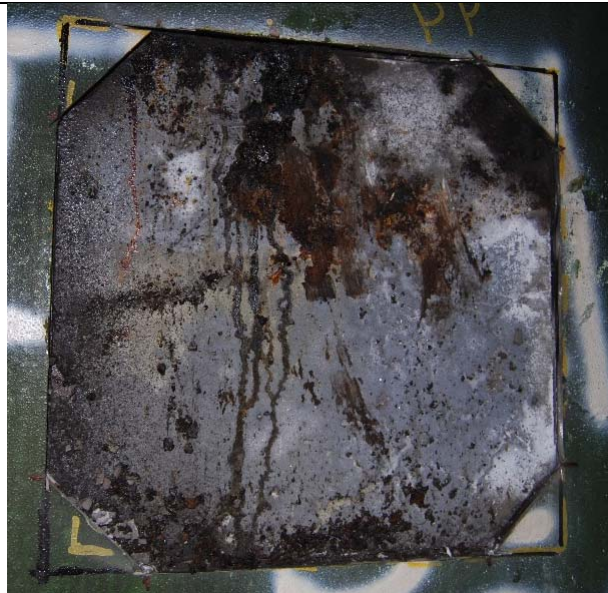
6/20/2018: 1100

CONCRETE SAMPLE SPECIFICS

Sample ID	A1	A1
Sample Location	14-BA-23-9-95-50	
Sample Dimensions	12X12 INCHES	

ON SITE VISUAL EXAMINATION

Checks	Observations	
	Exterior	Units
Void space between concrete and liner (if any)	1/8" Void on left side, no voids in all other areas	
Biological Materials	None	
Wet or Dry	Mostly dry with damp areas around corrosion product	
Smell	None	
Temperature	77.5	F
Surface pH	11-12 in dry areas, 7-8 in corroded area	
Structure to Electrolyte	-0.448 (dry area) -0.432 (damp area w. corrosion products)	Volts/CSE
Concrete Resistivity	32.9 Horizontal 37.0 Vertical	k-ohm-cm
General Condition	Good condition with sound concrete, no cracks or delamination. Corrosion products are present on concrete.	



CONCRETE SAMPLE SPECIFICS		
Sample ID	A2	A2
Sample Location	14-BA-11-4-226-50	
Sample Dimensions	12X12 INCHES	
ON SITE VISUAL EXAMINATION		
Checks	Observations	
	Exterior	Units
Void space between concrete and liner (if any)	1/2" Void on left and bottom side. 1/4" void on the right side	
Biological Materials	None	
Wet or Dry	Dry	
Smell	None	
Temperature	78.4	F
Surface pH	11-12	
Structure to Electrolyte	-0.226 (middle) -0.230 (right side)	Volts/CSE
Concrete Resistivity	35.8 Horizontal 36.1 Vertical	k-ohm-cm
General Condition	Good condition with sound concrete, no cracks or delamination. There is a layer of concrete which appears to have come off. Below that layer is sound concrete.	
Provide photo documentation with a minimum resolution of 2560 x 1920 of the coupon, front and back.	