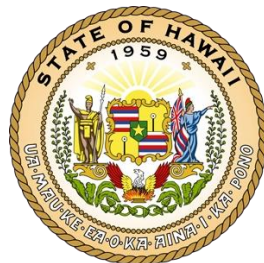


Hawai'i Rural Health Transformation Program AHEAD Steering Committee Meeting

Tuesday, June 2, 2026

Jack Lewin, MD - Administrator, State Health Planning and Development Agency

Senior Advisor to Governor Josh Green on Healthcare Innovation, Hawai'i Department of Health



Disclaimer

This presentation is supported by the Centers for Medicare and Medicaid Services (CMS). The content of this presentation are those of the authors and do not necessarily represent the official views of, nor an endorsement, by CMS, or the U.S. Government.

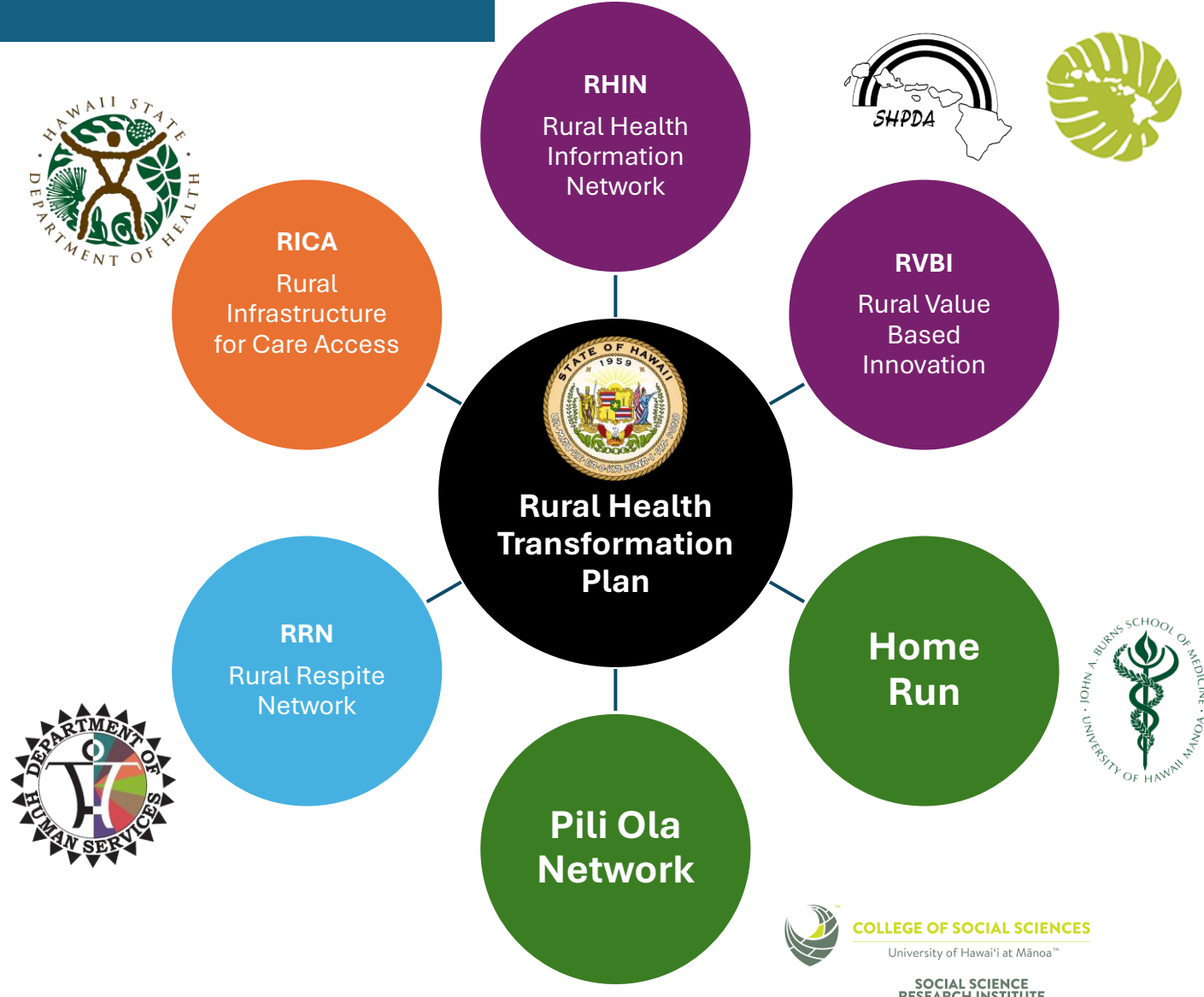
Rural Health Transformation Program

What is RHTP?

- A CMS grant designed to support rural communities transform the healthcare delivery ecosystem
- \$189 Million Dollars (per year) awarded to the State of Hawai'i for five years
- Divided into 6 initiatives



Rural Health Transformation Plan



Rural Health Transformation Program

What SHPDA Will Lead

- Initiative 1, Rural Health Innovation Network (RHIN)

The RHIN initiative is a competitive fund that will help rural health providers **strengthen network connectivity and modernize clinical systems** so they can participate successfully in the AHEAD model. Funds may support last-mile infrastructure, EHR optimization and interoperability upgrades, data exchange readiness, and technical assistance for implementation and training. Eligible applicants may include rural hospitals, independent provider practices, and Federally Qualified Health Centers (FQHCs).

- Initiative 6, RVBI

This competitive fund will **enable rural providers to adopt care models and succeed under the AHEAD model** by financing local value-based innovations. This may include support for quality reporting, advanced analytics, practice transformation coaching, hiring staff, etc. This includes hospitals, independent providers, and Federally Qualified Health Centers (FQHC).



Rural Health Transformation Program

What Projects Will Be Funded

- Initiative 1, Rural Health Innovation Network (RHIN) - \$45 million
 1. EHR upgrades/onboarding
 2. Network Infrastructure
 3. Care Quality Information Exchange
 4. Analytics & Technical Assistance Hub
 5. Community Care Coordination Hub (C-Hub)
& Duals Data Dashboard & Support Hub (DDDASH)
 6. PMO



Rural Health Transformation Program

What Projects Will Be Funded

- Initiative 6, Rural Value Based Innovation (RVBI) - \$25 million
 1. Rural Hospital Value Based Transformation and Global Budget Readiness Fund
 2. Community Health Center Value Based Transformation Readiness Fund
 3. Independent & Small Primary Care Practice Value-Based Readiness Fund



Who is RVBI For?

RVBI

1

Hospitals



2

Health Centers



3

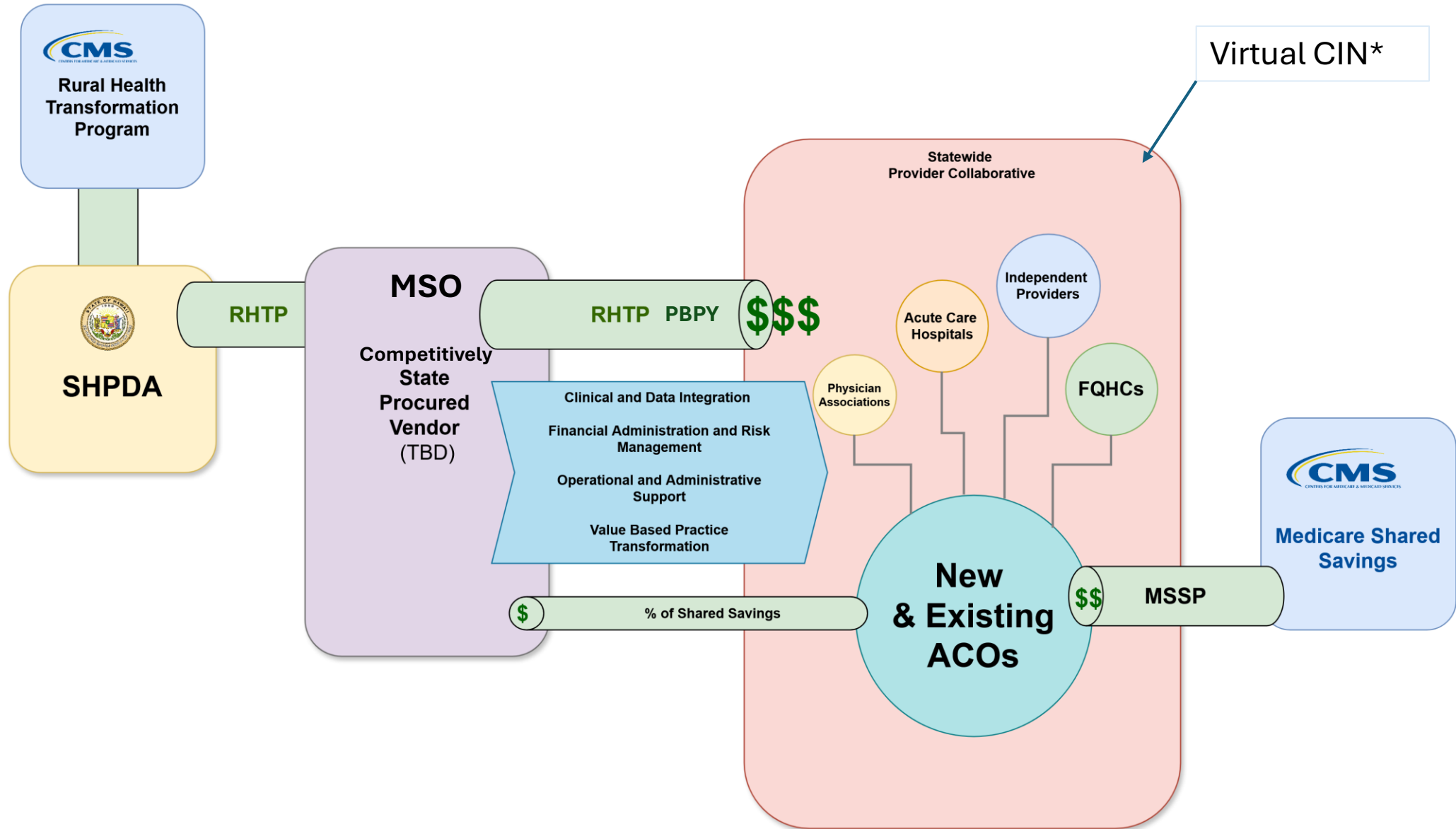
Independent Providers



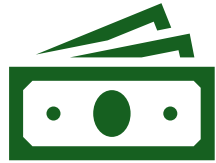
Structured Award Process

Something New...

How it works: Independent Providers

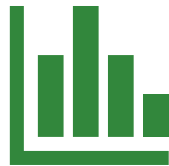


Proposed Managed Services Organization (MSO) Deliverables For Independent Providers



1. Payment Administration

Administer RVBI Readiness payments to be used to value based readiness



2. Data and Analytics Infrastructure

Turn multi-source clinical data into actionable reporting for value-based performance.



3. Practice Transformation

Provide operational and clinical support for MSSP and AHEAD readiness.



4. Downside Risk Support

Help participating entities manage financial risk and advanced participation.

To learn more.....

The State RHTP Application is Available Online:

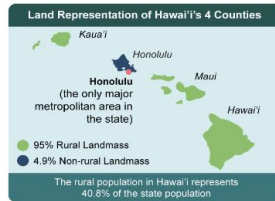
engage.hawaii.gov/rhttp/

State of Hawai'i CMS Rural Health Transformation Plan Project Narrative

1. Rural Health Needs and Target Population

A. Rural Demographics

Hawai'i, an isolated archipelago of Pacific Islands, is the most remote populated landmass on earth. Seven of the Hawaiian island are inhabited with a total population of 1.45 million. Hawai'i is a five to six-hour flight from California and a five to six-hour time zone difference from the nation's capital.¹ The only major metropolitan area in the state (Honolulu) is located on the island of O'ahu. All other areas of O'ahu and all other islands (known as the "neighbor islands") are rural. The state's rural areas are defined in Hawai'i Revised Statutes §1B-1².



Hawai'i is divided into four counties, including Honolulu, Maui, Kaua'i, and Hawai'i (for this application, Kalawao County—a county of less than 90 people and administered by the Hawai'i Department of Health—is considered part of Maui County). The majority (95%) of Hawai'i's land area is considered rural, representing 5,999 square miles. The rurality of Hawai'i

b. Subrecipient Awardees (Initiatives) Initiative 1: Rural Health Information Network (RHIN)

Name of Subrecipient: State Health Planning and Development Agency (SHPDA)

Period of Performance: FY26 – FY31

Scope of Work: SHPDA will lead the establishment and statewide rollout of the Rural Health Information Network (RHIN) initiative, which modernizes Hawai'i's rural health data infrastructure, in coordination with the State's Medicaid office (Med-QUEST Division). SHPDA will procure and manage contracts for electronic health record (EHR) onboarding, in-facility network installations, and interoperability integration for statewide health information exchange. Deliverables include implementation of four RHIN sub-hubs: the Care Quality Information Exchange (CQIE), Community Care Coordination Hub (C-Hub), Analytics & Technical Assistance Hub, and Duals Data Dashboard & Support Hub (DDDASH). Outcomes will include increased data interoperability, expanded closed-loop referrals, and measurable improvements in dual eligible integration, telehealth usage among providers, and value-based readiness.

Method of Oversight: The RHTP Project Director and Oversight Team will oversee SHPDA's implementation of the initiative. RHIN initiative leaders will meet with the RHTP Project Director and relevant members of the Oversight Team monthly. The lead agency (SHPDA) will provide quarterly progress reports and expenditure documentation. RHIN initiative leaders (or their designated representative) will participate in monthly RHTP Stakeholder Advisory Committee meetings, ensuring coordination among initiatives and community leaders, transparency in conduct, and real-time stakeholder feedback on implementation.

Itemized Budget and Justification:

Initiative	Rural Health Information Network (RHIN)				
	BP 1	BP 2	BP 3	BP 4	BP 5
A. Personnel	\$249,696	\$249,696	\$249,696	\$249,696	\$249,696
B. Fringe	\$159,954	\$159,954	\$159,954	\$159,954	\$159,954
C. Travel	\$3,250	\$3,250	\$3,250	\$3,250	\$3,250

b. Subrecipient Awardees (Initiatives) Initiative 1: Rural Health Information Network (RHIN)

Name of Subrecipient: State Health Planning and Development Agency (SHPDA)

Period of Performance: FY26 – FY31

Scope of Work: SHPDA will lead the establishment and statewide rollout of the Rural Health Information Network (RHIN) initiative, which modernizes Hawai'i's rural health data infrastructure, in coordination with the State's Medicaid office (Med-QUEST Division). SHPDA will procure and manage contracts for electronic health record (EHR) onboarding, in-facility network installations, and interoperability integration for statewide health information exchange. Deliverables include implementation of four RHIN sub-hubs: the Care Quality Information Exchange (CQIE), Community Care Coordination Hub (C-Hub), Analytics & Technical Assistance Hub, and Duals Data Dashboard & Support Hub (DDDASH). Outcomes will include increased data interoperability, expanded closed-loop referrals, and measurable improvements in dual eligible integration, telehealth usage among providers, and value-based readiness.



QUESTIONS?
MAHALO

