

HAWAII STATE HEALTH PLANNING AND DEVELOPMENT AGENCY
 1177 Alakea Street, Suite 402 • Honolulu, HI 96813 • Phone: (808) 587-0788 • www.shpda.org
 Honolulu Subarea Health Planning Council

Meeting Minutes

April 11, 2024 | 12:00 Noon Hawaii Time
 Virtually via Zoom and Physical Meeting Location at
 The Keoni Ana Building, 1177 Alakea Street, Suite 402

MEMBERS: Katherine Finn Davis, Tori Abe Carapelho, Trisha Kajimura, Colette Kon, Wesley Sumida, Charlene Takeno
 MEMBERS ABSENT: None
 GUESTS: None
 SHPDA: John Lewin, Wendy Nihoa

ATTENDANCE RECORD OF APPOINTED MEMBERS

Date	7/13/2023	8/10/2023	9/14/2023	10/12/2023	11/9/2023	12/14/2023	1/11/2024	2/8/2024	3/14/2024	4/11/2024
Tori Abe Carapelho**	X	X	X	O	O	X	X	X	O	X
Katherine Finn Davis*	X	X	O	X	X	X	X	X	X	X
Trisha Kajimura	/	/	/	X	X	O	O	O	O	X
Colette Kon	/	/	X	X	X	O	X	O	O	X
Wesley Sumida	O	O	X	O	X	X	O	O	O	X
Charlene Takeno	X	O	X	O	O	X	X	X	O	X

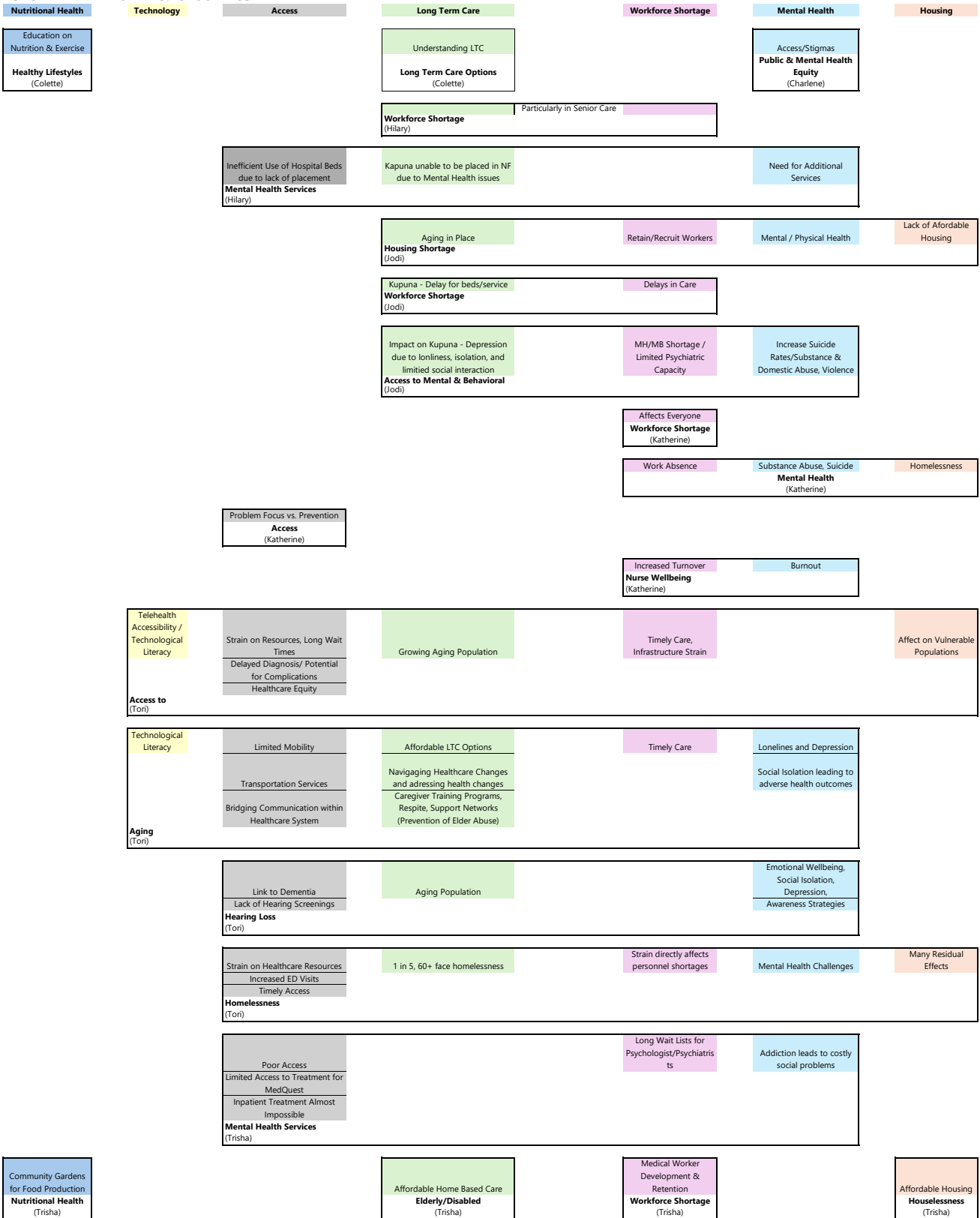
Legend: X=Present; O=Absent; /=No Meeting, *-Chair, **-Vice Chair

Meeting Recording https://www.zoomgov.com/rec/share/1xxCC7q0okq1M5WaY8Fc0UV9EVI3tO815tGMFP4M-NDA2F3q_aDeUgq4F2PmTk46.e81Mnx7JuRqmQFUI?startTime=1712872955000 Passcode: \$8zFNuo!

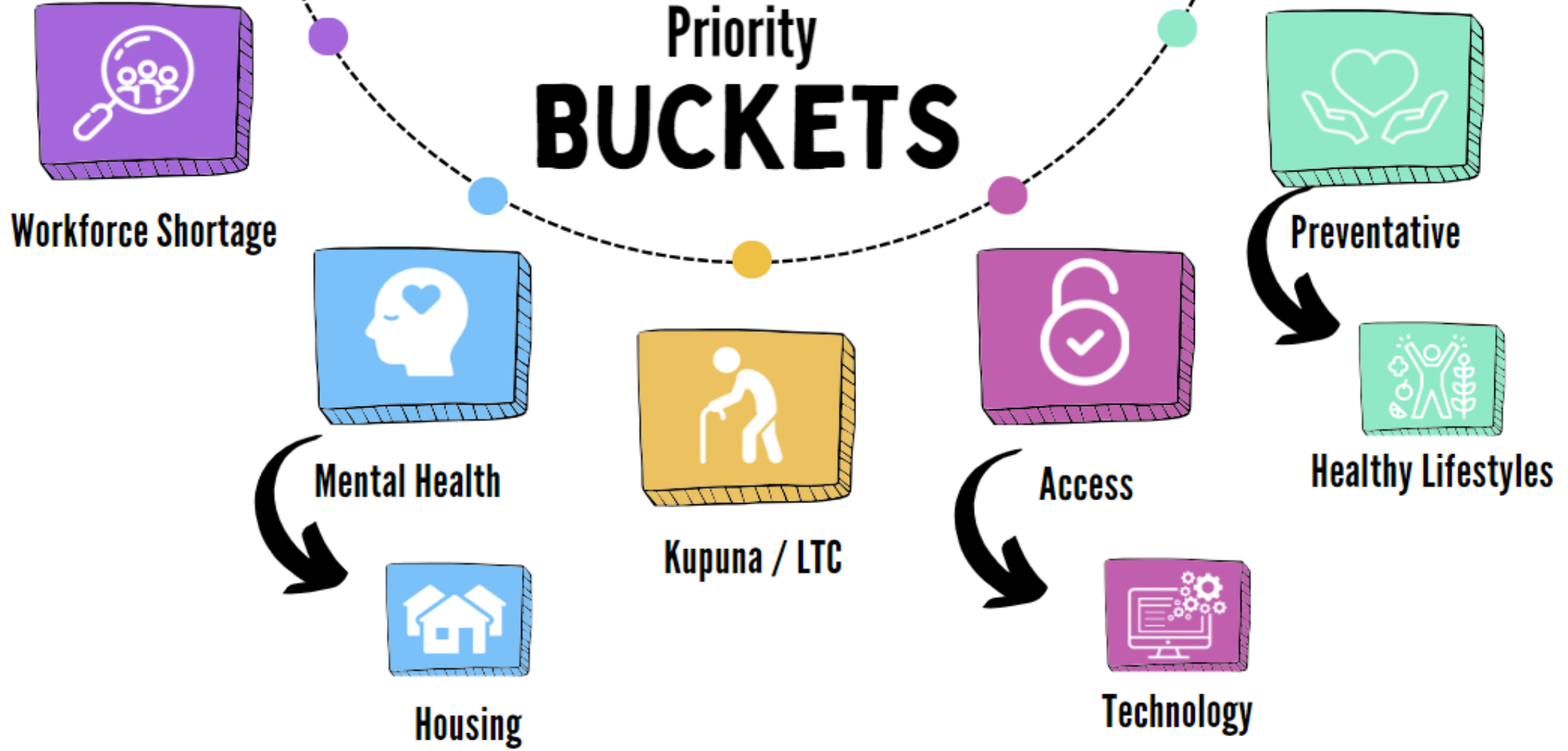
TOPIC	DISCUSSION	ACTION
Call to Order	The meeting was called to order at 12:03 p.m. by K. Finn Davis, Chairperson, presiding.	
Minutes	<p>Motion to accept the minutes from the February 8, 2024 and March 24, 2024 meetings.</p> <p>Vote: Unanimous. Motion Carried.</p> <p>Public testimony – None.</p>	
Administrator’s Report	The Administrator’s Report was distributed and reviewed. There were no questions.	
Honolulu Subarea Health Planning Council (HONSAC) Membership	<p>There are currently six members on the HONSAC. Current membership terms were discussed. W. Nihoa, Comprehensive Health Planning Coordinator will work with members individually to determine next steps.</p> <p>A short discussion followed.</p> <p>Public testimony – none.</p>	W. Nihoa to contact members RE: Membership Terms
State Health Planning and Development Agency (SHPDA) Updates	<p>J. Lewin, SHPDA Administrator, provided the following updates:</p> <p>2024 Legislative Session. Senate Bill 2285. This measure amends the functions and duties of SHPDA. Clarifies the definition of “health care”. Establishes a task force known as Hui Ho’omana. Establishes positions. Appropriates funds. If legislation passes it will broaden SHPDA’s vision.</p> <p>All-Payer Health Equity Approaches and Development Model (AHEAD) grant. The grant application was submitted; it will be 6-8 weeks before we hear anything. The grant start date is July 1, 2024. Hawaii applied for AHEAD Cohort 2 which will allow for 2.5 years of planning during the Pre-Implementation phase during which Hawaii will create its own global hospital reimbursement model. If Hawaii is not selected for Cohort 2, we will likely apply for Cohort 3, due August 2024.</p> <p>A discussion followed.</p> <p>Public testimony – none.</p>	
HONSAC Priorities	K. Finn-Davis and T. Abe-Carapelho provided a summary of work to date. The following	SHPDA-Email

	<p>similar subject themes was presented: Workforce Shortage, Mental Health (Housing), Kupuna/Long Term Care, Access (Technology), Prevention (Healthy Lifestyles). These themes are a result of compiling issues/problems identified previously by members. The document “HONSAC Priorities” was referenced and shared (screen share). Concern was expressed of diluting an issue by creating similar subject themes. Question as to how information on priorities will be used in the update of the Health Services and Facilities Plan. W. Sumida, Plan Development Committee Chair will meet with SHPDA to determine this.</p> <p>SHPDA to resend the HONSAC Priorities document to members for review and to prepare for discussion at the next meeting. A copy of the HONSAC Priorities is hereby attached to these minutes.</p> <p>Public testimony – none.</p>	<p>HONSAC Priorities document.</p> <p>W. Sumida/W. Nihoa-meeting.</p>
<p>Standing Committee/Other Committee Reports and Updates</p>	<p>Membership Committee. C. Takeno, Chair reported no updates. Discussion followed. C. Takeno will present a grid resulting from the member survey administered last year. The information on the grid will help to inform a more targeted recruitment strategy. All agreed to keep this item on the agenda.</p> <p>Statewide Health Coordinating Council (SHCC). The HONSAC liaison to the SHCC, H. Okumura, resigned from HONSAC and SHCC effective February 29, 2024. W. Nihoa mentioned a new SHCC liaison will need to be identified. There was a brief discussion. This item will be added to the next meeting agenda.</p>	<p>C. Takeno-prepare to present grid at next meeting.</p> <p>Members consider SHCC position.</p>
<p>Announcements</p>	<p>SHPDA. There will be a session on Robert’s Rules for SHPDA members on May 15, 2024, from 9:00-10:30 a.m. Interested members were instructed to email W. Nihoa for details.</p>	
<p>Next Meeting</p>	<p>May 9, 2024, 12 noon.</p>	
<p>Adjournment</p>	<p>The meeting was adjourned at 1:02 p.m.</p>	

HONSAC MEMBER PRIORITIES: GROUPINGS



Priority BUCKETS





1) Workforce Shortage

Address workforce shortages as they continue to put an overwhelming strain on care delivery, impacting timely and quality care for Hawaii's aging population and the wider healthcare system.

- Shortages require healthcare entities to rely on agency staffing/travel staff which becomes a financial burden, in turn leading to the rising cost of healthcare **(Access)**
- Directly impacts kupuna with reduced availability of skilled nursing beds and delayed home health services **(Kupuna)(Access)**
- Affects availability of hospital inpatient beds when patients can't be transferred to nursing facilities **(Access)**
- Affects everyone from birth to death
- Lack of access to healthcare has a direct link to society's overall ability to function at the highest level **(Access)**
- Impacts ability to provide timely and adequate health services **(Access)**
- Strain in healthcare resources, limiting capacity to meet needs of the growing aging population **(Access) (Kupuna)**
- Impacts long wait times and infrastructure strain leading to delayed diagnosis and treatment, heightening the potential for complications **(Access)**
- Lack of affordable housing impacts the ability to retain residents and recruit for the healthcare workforce
- Shortage of MH/BH professionals has resulted in lengthy delays **(Access)**
- More than half of nurses in the US report burnout, leading to increased turnover or leaving the profession entirely **(Access)**
- Affecting patient safety issues and poor clinical outcomes
- Homelessness strains available healthcare resources, impacting facilities, personnel, and preventative care initiatives. **(Access) (Preventative)**
- Medical workforce development and retention



2) Mental Health

Elevate mental health support to increase accessibility, reduce stigmas, and ensure comprehensive mental health services for all.

- Has become more and more prominent
- Kupuna seeking LTC placement face a critical challenge as mental health issues prevent access to available beds, putting a strain on much-needed hospital inpatient beds **(Kupuna) (Access)**
- Housing stability has an important upstream impact on mental and physical health **(Preventative)**
- Limited psychiatric capacity in hospitals and emergency rooms impacts the ability to treat patients **(Access)**
- Impacts kupuna who suffer from depression due to loneliness, isolation, and limited social interaction **(Preventative)**
- Barriers in accessing mental health treatment lead to higher rates of work absences, substance use, overdoes, homelessness, and suicide. **(Workforce)**
- 26.5% of Hawaii adults reported symptoms of anxiety and/or depressive disorder **(Preventative)**
- Because hearing loss is overlooked, the impact on mental health, dementia, and other chronic issues are not obvious, but can easily be avoided **(Preventative)**
- Untreated and unmanaged mental health conditions, including addiction, are the root of most complex and costly social problems



3) Kupuna/Long Term Care

Support the rapidly growing aging population by addressing health literacy, caregiver training, and the shortage of resources for aging in place.

- Lack of affordable housing impacts the ability for kupuna to age in place.
- Growing aging population demands accessible and affordable long-term care options **(Access)**
- Many seniors aren't equipped with enough knowledge to anticipate health changes and navigate the intricate healthcare system effectively **(Access)**
- Senior health navigation & preparedness programs are needed to better support the aging population **(Preventative)**
- Many seniors face mental health challenges including loneliness and depression, which often go unnoticed due to social isolation leading to adverse health outcomes **(Mental Health)**
- Limited mobility hinders seniors from accessing healthcare services, expanded transportation services or home health alternatives will ensure they can reach appointments and resources **(Preventative)**
- Streamlined communication is needed to create a seamless continuum of care, particularly bridging the gap between LTC, home care, and the broader healthcare system **(Access)**
- As seniors age, the demand for additional resources intensifies, emphasizing the need for a cohesive approach that ensures these essential components work together harmoniously **(Access)**
- Seniors face exclusion due to their lack of familiarity with technology. Literacy programs become essential to empower seniors with the necessary skills, enabling them to enhance communication, access healthcare information, and foster overall connectivity in the digital age. **(Preventative) (Access)**
- Caregivers may lack the necessary training and support to provide optimal care for seniors. Caregiver training programs, respite care, and support networks can help to empower and assist those caring for the aging population which can result in the prevention of elder abuse. **(Preventative) (Access) (Mental Health)**
- Hearing Loss impacts individuals across all age groups, predominantly seniors
- Accessible and affordable home-based services for elderly and/or disabled individuals so they can age in place safely **(Access)**
- Hawaii local population aging, families have limited resources for understanding the process for long-term care planning **(Preventative) (Access)**
- Patients, families, and friends are overburdened with managing care and cost for aging family member
- Understanding the Medicare/Medicaid benefits, POLST and AHCD may be beneficial **(Access)**



4) Access

Address barriers that stem from external challenges, ensuring equitable health support that will guarantee everyone can access essential services.

- Access challenges disproportionately affect vulnerable populations intensifying health disparities across socioeconomic groups
- Financial barriers create a significant health divide, preventing individuals with limited resources from accessing essential healthcare
- Disparities can lead to long-term health issues, emphasizing the need for financial assistance programs and collaborative efforts to ensure health equality
- Hearing loss is an unaddressed public health concern that has detrimental effects on the community health and well-being **(Mental Health) (Preventative)**
- Homelessness exacerbates health issues, leading to increased emergency room visits, mental health challenges, and the spread of communicable diseases **(Mental Health)**
- Homelessness creates a cycle of health deterioration hindering individuals from accessing timely and consistent healthcare, resulting in worsened conditions



5) Preventative

Initiate proactive measures that will prevent negative impacts across various health categories, bridging gaps in telehealth, combating stigmas, promoting routine screenings, and supporting healthy lifestyles.

- Gaps in telehealth accessibility limit the reach and effectiveness of virtual care options such as broader accessibility and barriers such as technological literacy **(Access) (Kupuna)**
- Hindered by social stigmas and lack of understanding individuals with hearing loss face profound consequences across various dimensions of life, impacting physical health, emotional well-being, social connections, and economic welfare **(Mental Health)**
- Recognizing hearing health as an important health concern with routine screenings and other preventative measures can reduce the burden on mental health services, and improve overall well-being resulting in more efficient and effective healthcare system **(Mental Health)**
- Availability of community gardens for food production
- Education and marketing strategies to promote Healthy Lifestyles with focus on nutrition and exercise