

HAWAII STATE HEALTH PLANNING AND DEVELOPMENT AGENCY
 1177 Alakea Street, Suite 402 • Honolulu, HI 96813 • Phone: (808) 587-0788 • www.shpda.org
 West Oahu Subarea Health Planning Council

Meeting Minutes
 March 15, 2023
 12:30 PM Hawaii Time
 Zoom Meeting

MEMBERS: Eric Barsatan, Camonia Graham-Tutt, Beverly Inocencio, Paul Roeder, Frederick Shaw.
MEMBERS ABSENT: Andrew Ancheta, Mae Patricia La Chica, Jay Raymundo.
GUESTS: Lord Ryan Lizardo.
SHPDA: Wendy Nihoa.

ATTENDANCE RECORD OF APPOINTED MEMBERS

Date	6/16/21	10/27/21	12/15/21	03/16/22	6/15/22	9/21/22	11/30/22	1/25/23	3/15/23
Andrew Ancheta	O	X	O	O	O	O	O	O	O
Eric Barsatan	O	X	O	O	X	O	O	X	X
*Camonia Graham-Tutt	X	X	X	X	X	X	X	X	X
Beverly Inocencio	X	X	X	O	O	X	X	X	X
**Mae Patricia La Chica	-	X	X	X	O	X	X	O	O
Jay Raymundo	X	O	O	O	X	O	O	X	O
Paul Roeder	O	X	X	X	O	X	X	X	X
Frederick Shaw	X	O	X	X	X	X	X	X	X

Legend: X=Present; O=Absent; /=No Meeting
 *-Chair, **-Vice Chair

TOPIC	DISCUSSION	ACTION
Call to Order	The meeting was called to order at 12:33 p.m. with C. Graham Tutt, Chair, WOSAC presiding.	
Roll Call/Introductions	Members, staff, and guests introduced themselves.	
Administrator’s Report	The Administrator’s Report was distributed and reviewed.	
Presentation	<p>“Healthcare Workforce Needs – West Oahu” by Lord Ryan Lizardo, Work-Based Learning, Chamber of Commerce Hawaii (COCH). The presentation highlighted COCH’s workforce initiatives with reference made to the Healthcare Association of Hawaii’s (HAH) Workforce Initiative. L.R. Lizardo invited anyone interested in participating in these initiatives to attend the “Pau Hana Series”, May 10, 2023, 5:30-7:30 p.m., at the Hall by Beer Lab HI. A copy of the presentation is attached to these minutes as “Attachment A”. Questions regarding the COCH’s initiatives may be emailed to L.R. Lizardo @ rlizardo@cochawaii.org</p> <p>The presentation was followed by a Q&A and discussion.</p>	
Meeting Minutes	<p>The minutes of the January 15, 2023 meeting was reviewed and unanimously approved.</p> <p>Call for public testimony – None.</p>	
Announcements/Other Matters	<p>SHPDA. Encouraged attendance to presentations at the Honolulu Subarea Health Planning Council meeting on May 11, 2023. Topics: The Healthcare Association of Hawaii’s Workforce Initiative and the Hawaii Community Needs Assessment.</p> <p>The City & County of Honolulu, Department of Community Services will be hosting a “Hiring Event” on April 12, 2023 from 9:00 a.m.- 1:00 p.m. at the Dole Cannery, Ground Floor. The link to a PDF was shared in the comments and included in these minutes as “Attachment B”.</p> <p>Board Members were reminded if being approached by anyone to advocate for a Certificate of Need, please be sure to check with the Hawaii Ethics Commission before responding.</p>	
Next Meeting/Agenda	May 17, 2023 at 12:30 p.m. via Zoom.	

Adjourn	The meeting was adjourned at 1:08 p.m.	
---------	--	--



Welcome to the Healthcare Sector Partnership

Education & Workforce Development

OUR VISION

Hawaii businesses have a highly skilled, local talent pipeline driving a thriving economy with students on clear pathways to meaningful careers that pay a family-sustaining wage.

Bridge business with education in support of a strong talent pipeline and attainment of Hawaii's college and career readiness goals:

- **68%** of HIDOE 12th graders complete CTE Program of Study (HIDOE Promise Plan)
- **55%** of working age adults attain an industry-certified certificate, 2-year or 4-year college degree by 2025 (55 by 25)

OUR GOAL

OUR PORTFOLIO

- WORK-BASED LEARNING **students**
- SECTOR PARTNERSHIPS **employers**
- WORKFORCE DEVELOPMENT **jobseekers**

School Partners Include

- Farrington
- Campbell
- Castle
- Kapolei
- Kauai
- Leilehua
- Maui
- Pearl City
- Waipahu
- Waianae
- Waimea

Mahalo to our Sponsors and Conveners

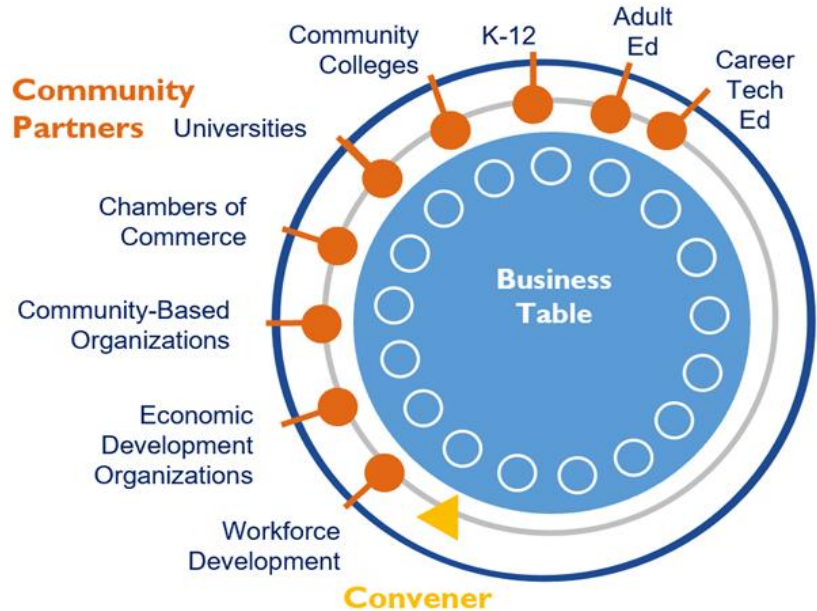


Reminder: Sector Partnerships are Industry-led

Industry-driven public/private collaboratives that address Hawaii's workforce development opportunities.

Support partners leverage their resources to help.

Third-party **convener** facilitates (COCH & HAH). This work is grant-funded.



Welcome Healthcare Sector Partners

Industry:

5 Minute Pharmacy
Accredo/Express-Scripts
Adventist Health Castle
Aloha United Way
AlohaCare
AMR- Ambulance
Arcadia
Blue Water Resources
Care Resource Hawaii
City and County of Honolulu EMT
Clinical Lab Hawaii
Coral Med, Inc.
Department of Health & Human Services
DHS Med-Quest Division
DLS Lab
Ekahi Health Systems
Hale Makua
Hawaii Dental Service
Hawaii Family Dental Centers
Hawaii Health Information Exchange
Hawaii Health Systems Corporation
Hawaii Homeless Healthcare Hui (H4)
Hawaii Pacific Health
Hawaii Primary Care Association

Healthcare Association of Hawaii
Hina Mauka Recovery Center
HMSA
Institute for Human Services (IHS)
Kaiser Permanente
Kalihi Palama Health Center
Kuakini Health System
Leahi Hospital
Medicine Pediatrics Associates
Mental Health Kokua
Naviance Hawaii
Ohana Pacific
One Kalakaua
PharMerica- Hawaii State Hospital
ProService Hawaii
Rehabilitation Hospital of the Pacific
St. Francis Medical Healthcare Systems of Hawaii
The Queen's Health Systems
Tripler Army Medical Center
United Healthcare
VA Pacific Islands Health Care System
Waikiki Health
Waianae Coast Comprehensive Health Center
Wilson Care Group
YMCA Honolulu

Education:

Area Health Education Center (AHEC), JABSOM
Chaminade University
Farrington High School Complex
Kapolei High School Complex
Hawaii Pacific University
Pearl City High School Complex
Waianae High School Complex
University of Hawaii System

Community Partners:

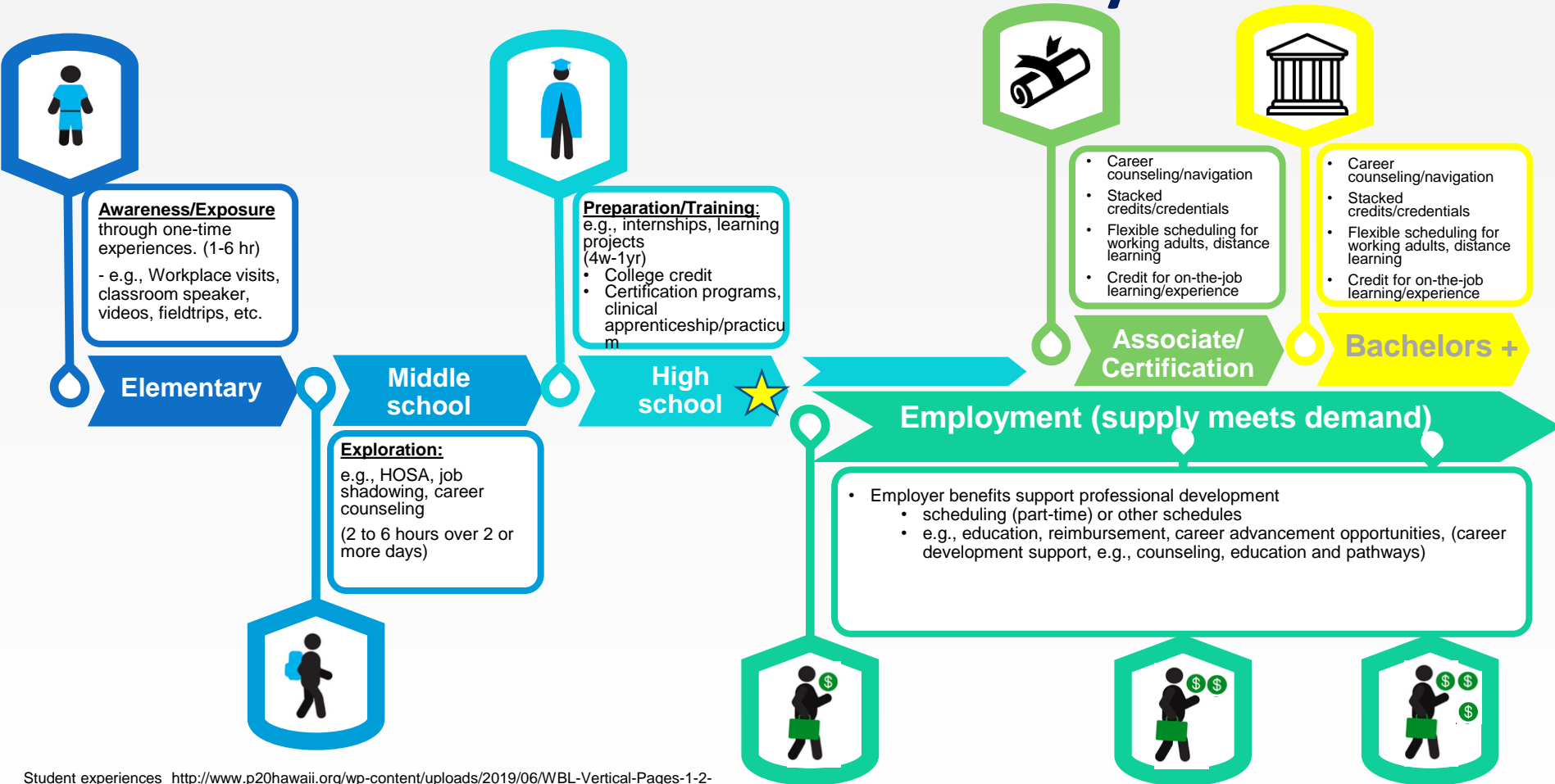
Harold KL Castle Foundation
Hawaii Business Roundtable
Hawaii P-20 Partnership for Education
Workforce Development Division (DLIR)
Economic Development Boards (Maui, Kauai)

Conveners:

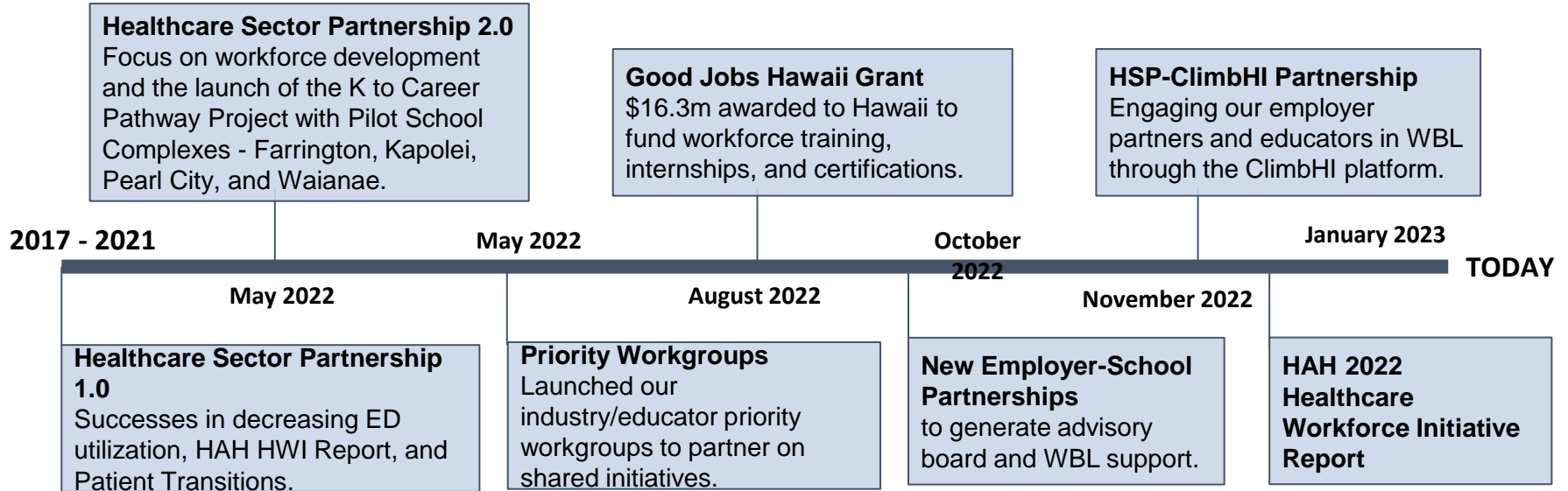
Keala Peters, Chamber of Commerce Hawai'i
Katie Kaahanui, Chamber of Commerce Hawai'i
Lord Ryan Lizardo, Chamber of Commerce Hawai'i
Janna Hoshide, Healthcare Association of Hawaii
Colleen Leopoldino, Healthcare Association of Hawaii
Anna Pacheco, SMS Research



Goal: Healthcare K-Career Pathway



Review of Where We Are



Workgroup Initiatives

Emerging and in progress key initiatives for each of the priority workgroups include:



Career Awareness

*Michele McConnell, Diagnostic Laboratory Services
Tim Pfungsten, Adventist Health*

Increased opportunities for students to learn about careers in healthcare.

- ClimbHI Bridge
- Educator Externships
- Student WBL
- Educator / Student One-Pager



Training and Transitions to Employment

*Carl Hinson, Hawaii Pacific Health
Wes Lo, Ohana Pacific*

Expanding opportunities for students to gain work experience and training.

- Good Jobs Challenge Grant Training and Certifications
- Models for Employer Engagement
- New Training Collaboratives



Curriculum Support

Jennifer Diesmann, HMSA

Increasing industry guidance and training opportunities for teachers.

- ✓ Increasing advisory board membership with pilot schools
- Advisory Board Lunch
- Working with the DOE to support Teacher PD on new pathways of study

Shared Priority: Increasing Engagement among Native Hawaiians and Pacific Islanders

About Good Jobs Hawai'i

- \$35 million workforce development initiative that will provide **free skills training** and **job placement support** for high demand, well paying jobs.
- Coalition of educators, businesses and community partners.
- Help people in Hawai'i get high quality jobs while employers meet their needs for a skilled workforce.
- Healthcare, Technology, Clean Energy/Skilled Trades, Creative Industries
- One of 32 workforce initiatives awarded nationally through the American Rescue Plan Act.

Good Jobs Hawai'i will focus on innovative approaches to transform Hawai'i's workforce development system.



What is a good job?



Pays well



**Provides good
benefits**



**Offers opportunities
For advancement**



**Makes one
feel valued**

Training Eligibility

- Hawai'i resident
- U.S. Citizen or green card holder or COFA status
- Minimum 16 years of age
- High school diploma or GED *or* current high school students for specific cohorts



Focus is on those with no to little post-sec education and career changers

Good Jobs Hawai'i Pathways to Careers

**FREE SKILLS
TRAINING**
UHCC Courses &
Certifications
Paid Internships

+

WRAPAROUND SUPPORT



QUALITY JOBS

Community Partners

Entry-level jobseekers
& incumbent workers



Good Jobs
HAWAII

Employers

- Short-term training + job placements (Integration of employment process)
 - Entry-level:
 - CNA/NA
 - Patient Service Representative
 - Phlebotomist
 - Medical Assistant
 - Pharm Tech
 - Dental Assisting
 - Optometry assistant
 - LPN
 - Nurse Residency Programs
 - Nurse Specialty-to-Practice HealthStream programs
- UHCC programs primary; sub-contract other (Hawaii Island)
- Scope: high school seniors, adult candidates, employee upskill
- Native Hawaiian and Pacific Islander (1/3)

	Participants		
Sector	Y1	Y2	Y3
Healthcare	450	550	650
Technology	150	200	300
Clean Energy	0	150	250
Creative Industries	0	150	150
Project Total	3,000		



Ready to hire?

Current Participants

SECTOR PARTNERSHIPS

If your company is already engaged in Sector Partnerships in Healthcare or IT and you're ready to train and hire local workers for entry level jobs, we can help you get started.

Begin Training and Hiring: Healthcare

Begin Training and Hiring: IT

Employer tab ([goodjobshawaii.org](https://www.goodjobshawaii.org))

- Intake Form <https://www.surveymonkey.com/r/25ZX6G7>
- Intermediary will engage with you
- \$2,000/hire

HAHworkforceteam@hah.org

GoodJobs
HAWAII

Next Steps

Educators	Employers
<ul style="list-style-type: none">● Sign-up for ClimbHI Bridge (Find your ClimbHI School POC or email swibholm@cochawaii.org)● Begin using ClimbHI Bridge and make requests for WBL opportunities!● Participate at the workgroup level	<ul style="list-style-type: none">● Join the Sector Partnership by emailing Lord Ryan (lrlizardo@cochawaii.org)● Sign on to Good Jobs Hawaii Employer Pledge @ goodjobshawaii.org● Sign-up for ClimbHI Bridge @ tinyurl.com/HSPCHBF22● Participate in School Advisory Meetings● Participate at the workgroup level

SAVE THE DATE! Full Partnership Meeting Dates for 2022-23

- May 10, 2023 from 3pm to 4:30pm (IN-PERSON at TBD)

WorkHawaii - AmericanJobCenter[®]
HAWAII

EMPLOY O'AHU'S FUTURE WORKFORCE

HIRING EVENT

Apr 12, 2023 9:00 AM-1:00 PM

LOCATED AT DOLE CANNERY

650 Iwilei Rd, Ground Floor



Looking to hire graduating high school seniors?

The American Job Center Hawaii is working with the Department of Education to hold a Hiring Event for this year's Graduating Seniors from the 24 Oahu High Schools. Students will be bussed to the event, and we are anticipating several hundred to attend.

We will hold the event on **WEDNESDAY APRIL 12th**

We'd like to ask that employers who participate are eager and willing to offer employment, apprenticeships, or internships for graduating high school seniors who will be looking for one or more of the following from a future employer:

- **Full-time work beginning June 2023**
- **Option to reduce/flex hours in August 2023 for those who plan to enroll in college in the fall**
- **Possible part-time work beginning immediately**
- **Training opportunities**
- **Opportunities for advancement**
- **Competitive wages and/or bonuses**

To sign up as an employer for this event scan the QR CODE or email:
mark.menard@honolulu.gov.



The WorkHawaii-American Job Center Hawaii Hiring Event is supported by \$6,672,737 in federal funds and \$536,737.00 in non-federal funds. For this event, a total of \$1,380.06 (0.02%) is financed with federal funds, and \$1,598.85 (0.3%) is funded by non-federal sources.

City and County of Honolulu
Department of Community Services
WorkHawaii Division

