

Table 15. Average Daily Census by County, 1984 - 2004

	1984	1985	1986	1987	1988	1989	1990	1991	1992	1993	1994	1995	1996	1997	1998	1999	2000	2001	2002	2003	2004	
<b>LONG TERM CARE</b>																						
<i>Oahu</i>	1696	1720	1753	1863	1992	2043	2140	2153	2227	2212	2250	2167	2353	2305	2317	2339	2358	2421	2501	2444	2477	
<i>Hawaii</i>	384	385	379	394	381	434	452	468	508	519	530	519	537	535	647	656	633	604	672	690	693	
<i>Kauai</i>	131	136	127	178	184	210	233	239	251	251	279	267	270	266	265	278	243	286	293	302	304	
<i>Tri-Isle</i>	341	349	343	344	343	306	341	357	357	357	354	355	364	380	446	447	467	472	470	468	467	
<i>Maui</i>	321	328	330	323	328	282	316	332	335	334	334	333	338	358	420	424	446	447	450	448	452	
<i>Molokai</i>	12	14	13	13	15	17	19	19	17	16	13	15	17	18	19	16	14	15	9	10	6	
<i>Lanai</i>	8	7	---	8	---	7	6	5	5	7	7	8	10	6	6	8	8	10	10	10	9	
<b>TOTAL ACUTE CARE</b>																						
<i>Oahu</i>	1280	1284	1295	1366	1376	1374	1450	1458	1505	1491	1485	1441	1352	1368	1281	1306	1353	1315	1305	1271	1261	
<i>Hawaii</i>	124	122	135	146	159	159	166	168	138	148	146	156	124	149	147	135	160	176	188	166	157	
<i>Kauai</i>	56	59	52	60	61	69	60	54	63	65	59	51	52	54	56	52	51	51	55	60	68	
<i>Tri-Isle</i>	98	101	104	111	111	121	126	133	130	143	144	154	160	139	137	148	146	152	157	159	151	
<i>Maui</i>	93	97	100	108	110	119	124	132	130	142	142	153	159	139	135	147	145	151	156	158	149	
<i>Molokai</i>	4	3	4	2	1	1	1	1	1	1	1	1	1	1	1	1	1	1	1	1	1	
<i>Lanai</i>	1	1	---	1	---	1	1	1	1	1	1	1	1	1	1	1	0	0	0	0	1	
<b>MEDICAL-SURGICAL</b>																						
<i>Oahu</i>	913	889	910	969	959	958	1033	1027	1062	1060	1069	1058	970	990	919	951	986	949	931	907	904	
<i>Hawaii</i>	90	88	97	108	117	118	125	127	102	107	104	114	89	106	106	99	119	135	149	121	112	
<i>Kauai</i>	43	45	39	47	46	52	45	42	52	53	47	39	41	42	44	40	39	39	41	44	51	
<i>Tri-Isle</i>	78	83	84	92	90	100	104	112	107	119	122	133	136	114	114	123	118	122	126	127	121	
<i>Maui</i>	74	79	81	89	89	98	103	110	107	118	121	132	135	113	113	122	117	121	125	126	120	
<i>Molokai</i>	3	3	3	2	1	1	1	1	1	1	1	1	1	1	1	1	1	1	1	1	1	
<i>Lanai</i>	1	1	---	1	---	1	1	1	1	1	1	1	1	1	1	1	0	0	0	0	1	

--- = Category not applicable. --- = Data not available. Excludes Tripler.

Includes revised 1992 Kapiolani data, revised 1993 Straub data, revised 1994 St. Francis-West Oahu data, revised 1996 Hale Malamalama data and revised 1996 Kaiser data, revised 1997 North Hawaii Community Hospital data, revised 1997 Wahiawa data, revised 1998 Hale Makua (Maui) data, revised 2001 Kauai and Oahu data, revised (6/27/06) Maui and Lanai data, revised 2004 Kauai data.

Source: SHPDA, sh04t15.xls

Table 15. Average Daily Census by County, 1984 - 2004 (Continued)

	1984	1985	1986	1987	1988	1989	1990	1991	1992	1993	1994	1995	1996	1997	1998	1999	2000	2001	2002	2003	2004	
<b>CRITICAL CARE</b>																						
<i>Oahu</i>	95	94	98	110	135	157	120	126	129	134	121	119	118	127	126	126	132	131	130	120	117	
<i>Hawaii</i>	9	9	10	10	11	12	12	11	9	10	10	9	7	10	10	10	11	12	9	11	13	
<i>Kauai</i>	3	3	3	3	4	4	4	4	3	4	4	4	4	4	4	4	4	4	4	4	4	
<i>Maui</i>	4	5	5	5	5	5	5	6	6	6	6	7	7	6	7	8	10	11	12	11	9	
<b>OBSTETRICS</b>																						
<i>Oahu</i>	118	111	100	123	119	92	113	106	107	101	95	76	76	72	80	76	80	76	79	82	87	
<i>Hawaii</i>	12	13	14	15	17	16	18	18	15	16	15	14	12	13	12	11	12	13	12	14	14	
<i>Kauai</i>	6	6	6	6	6	7	7	6	5	5	5	5	5	5	5	5	6	6	6	6	7	
<i>Tri-Isle</i>	7	6	6	6	6	7	8	7	7	7	6	7	6	7	7	7	7	10	10	11	11	
<i>Maui</i>	7	6	6	6	6	7	8	7	7	7	6	6	6	7	7	7	7	10	10	10	11	
<i>Molokai</i>	1	1	1	2	1	1	1	1	1	1	1	1	1	1	1	1	1	1	1	1	1	
<i>Lanai</i>	2	2	---	2	---	2	1	1	0	1	1	0	0	0	0	0	0	0	0	0	0	
<b>PEDIATRICS</b>																						
<i>Oahu</i>	47	45	42	52	48	56	73	85	87	80	76	77	78	73	72	66	58	69	77	75	75	
<i>Hawaii</i>	5	5	5	4	4	5	4	4	3	2	2	3	2	2	2	2	2	2	2	2	1	
<i>Kauai</i>	...	...	...	...	...	...	...	...	...	...	...	...	...	...	...	...	...	...	...	...	...	
<i>Tri-Isle</i>	4	4	4	3	4	3	3	3	2	2	1	2	2	3	...	...	...	...	...	...	...	
<i>Maui</i>	4	4	4	3	4	3	3	3	2	2	1	2	2	3	...	...	...	...	...	...	...	
<i>Molokai</i>	...	...	...	...	...	...	...	...	...	...	...	...	...	...	...	...	...	...	...	...	...	
<b>PSYCHIATRIC</b>																						
<i>Oahu</i>	83	120	145	90	92	83	85	90	93	92	98	87	85	82	57	61	63	64	62	63	53	
<i>Hawaii</i>	7	7	9	9	10	8	6	8	10	13	15	16	14	17	16	14	15	18	18	20	17	
<i>Kauai</i>	4	4	4	4	4	5	4	3	2	3	2	3	2	3	3	3	3	5	5	6	5	
<i>Maui</i>	4	4	5	5	6	6	5	6	7	8	8	6	10	9	9	10	11	10	10	12	10	

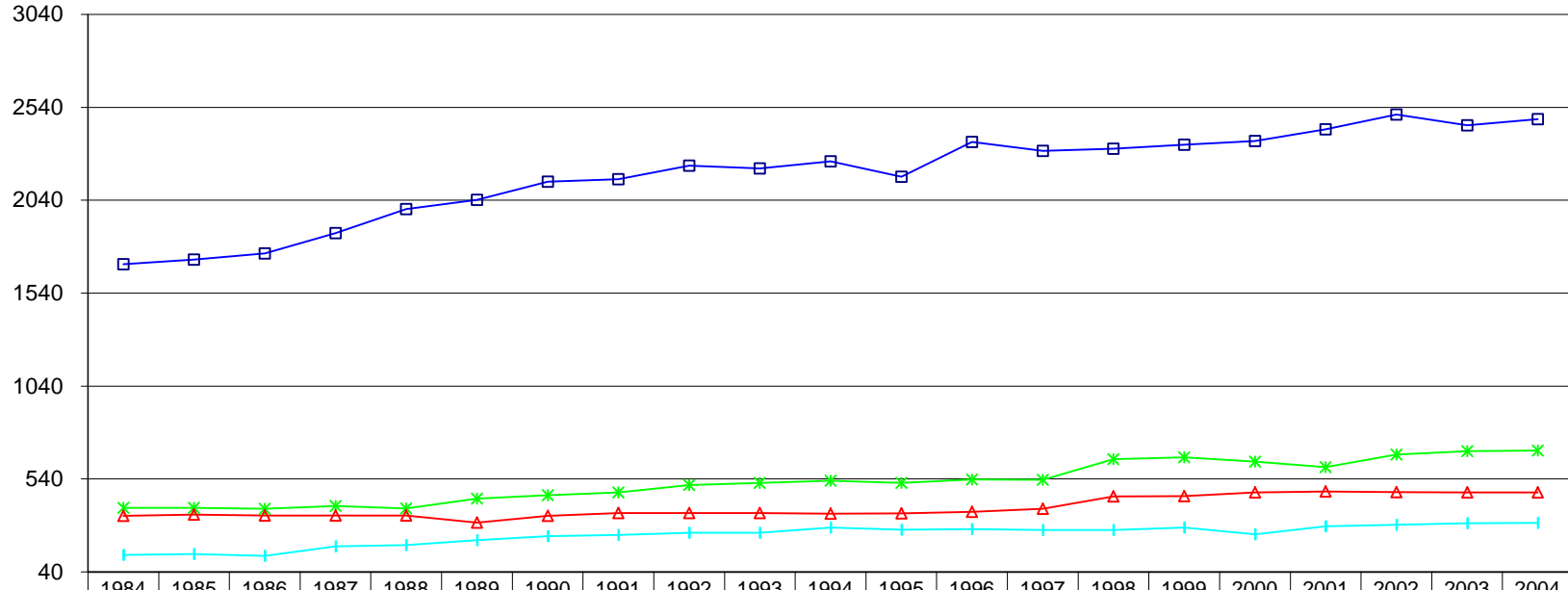
... = Category not applicable. --- = Data not available. Excludes Tripler.

Includes revised 1992 Kapiolani data, revised 1993 Straub data, revised 1994 St. Francis-West Oahu data, revised 1996 Hale Malamalama data and revised 1996 Kaiser data, revised 1997 North Hawaii Community Hospital data, revised 1997 Wahiawa data, revised 1998 Hale Makua (Maui) data, revised 2001 Kauai and Oahu data, revised (6/27/06) Maui and Lanai data, revised 2004 Kauai data.

Source: SHPDA, sh04t15.xls

## Average Daily Census Long Term Care

Average Daily  
Census

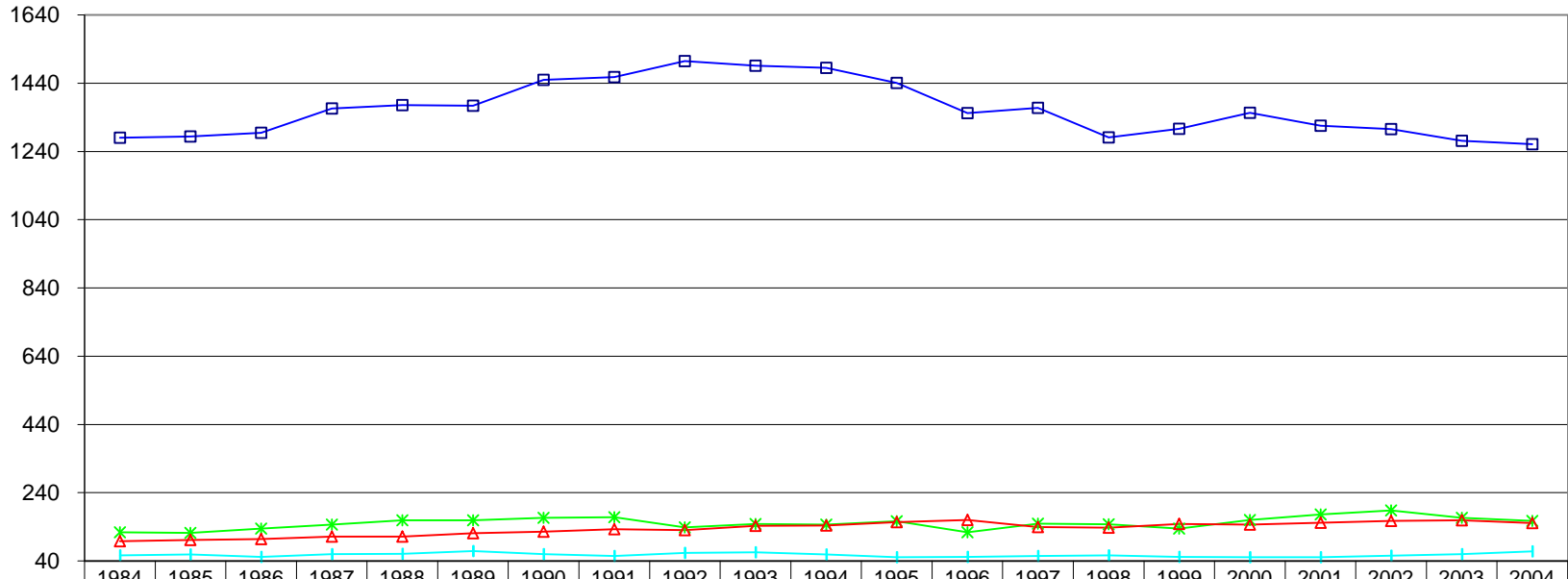


	1984	1985	1986	1987	1988	1989	1990	1991	1992	1993	1994	1995	1996	1997	1998	1999	2000	2001	2002	2003	2004
—■— Honolulu	1696	1720	1753	1863	1992	2043	2140	2153	2227	2212	2250	2167	2353	2305	2317	2339	2358	2421	2501	2444	2477
—*— Hawaii	384	385	379	394	381	434	452	468	508	519	530	519	537	535	647	656	633	604	672	690	693
—+— Kauai	131	136	127	178	184	210	233	239	251	251	279	267	270	266	265	278	243	286	293	302	304
—▲— Maui	341	349	343	344	343	306	341	357	357	357	354	355	364	380	446	447	467	472	470	468	467

Calendar Year

## Average Daily Census Total Acute Care

Average Daily  
Census

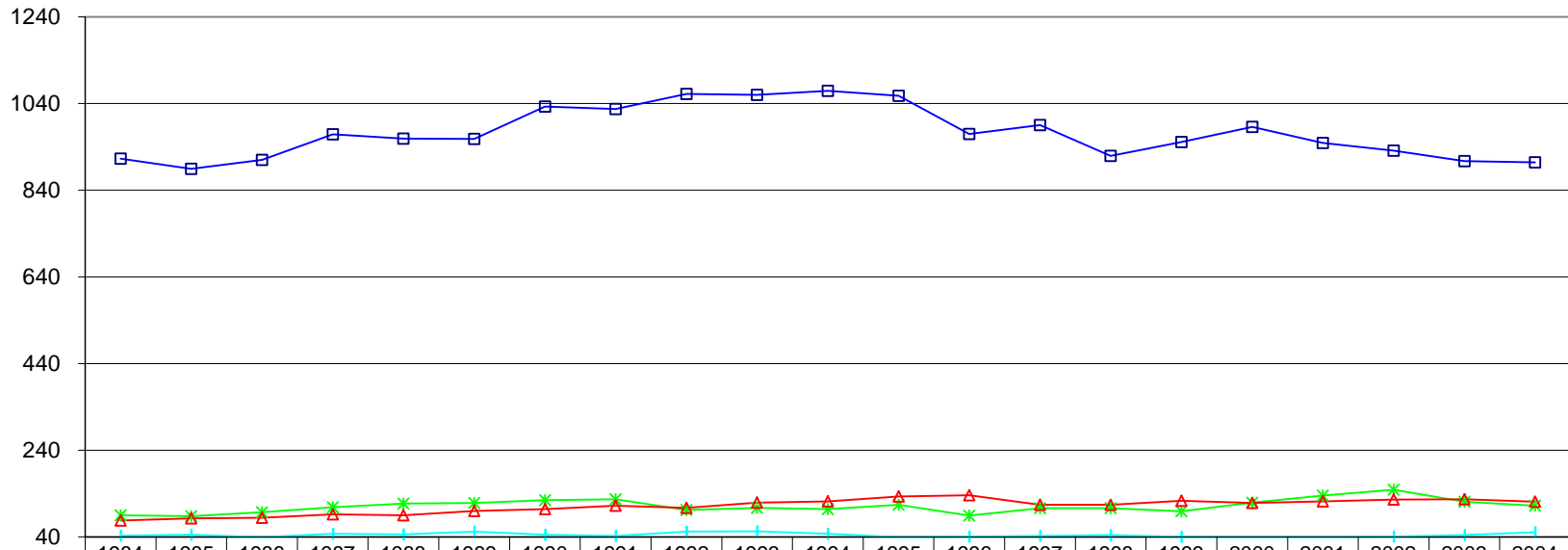


	1984	1985	1986	1987	1988	1989	1990	1991	1992	1993	1994	1995	1996	1997	1998	1999	2000	2001	2002	2003	2004
—■— Honolulu	1280	1284	1295	1366	1376	1374	1450	1458	1505	1491	1485	1441	1352	1368	1281	1306	1353	1315	1305	1271	1261
—*— Hawaii	124	122	135	146	159	159	166	168	138	148	146	156	124	149	147	135	160	176	188	166	157
—+— Kauai	56	59	52	60	61	69	60	54	63	65	59	51	52	54	56	52	51	51	55	60	68
—▲— Maui	98	101	104	111	111	121	126	133	130	143	144	154	160	139	137	148	146	152	157	159	151

Calendar Year

## Average Daily Census Medical-Surgical

Average Daily  
Census

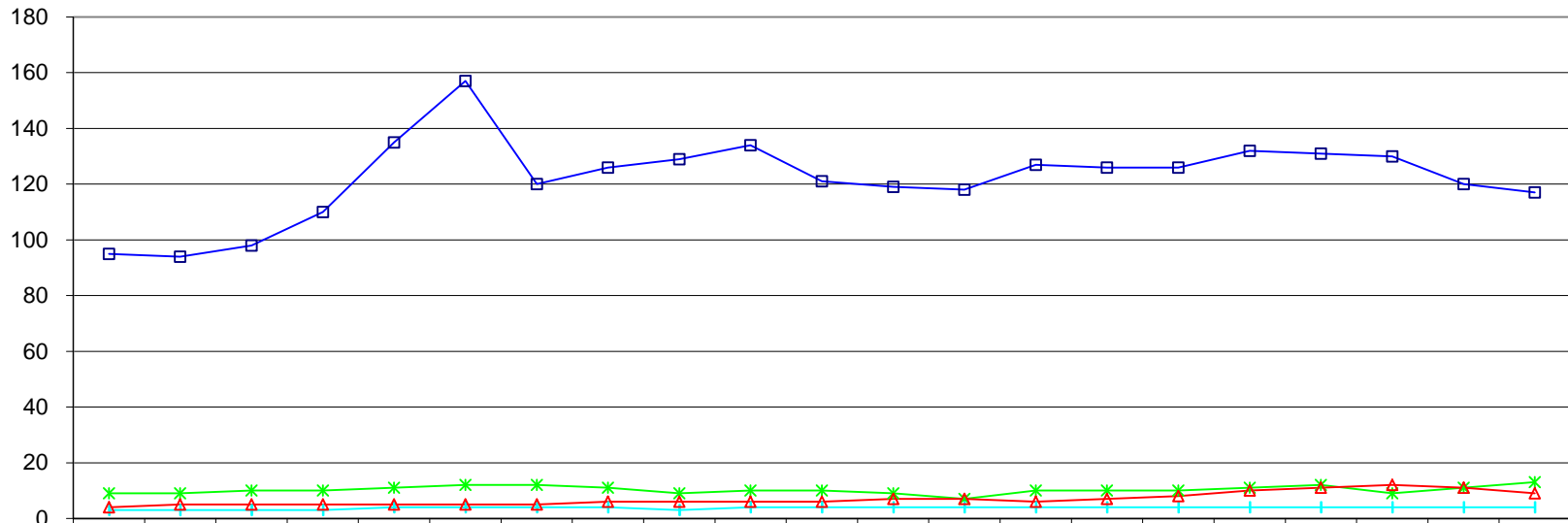


—□— Honolulu	913	889	910	969	959	958	1033	1027	1062	1060	1069	1058	970	990	919	951	986	949	931	907	904
—*— Hawaii	90	88	97	108	117	118	125	127	102	107	104	114	89	106	106	99	119	135	149	121	112
—+— Kauai	43	45	39	47	46	52	45	42	52	53	47	39	41	42	44	40	39	39	41	44	51
—△— Maui	78	83	84	92	90	100	104	112	107	119	122	133	136	114	114	123	118	122	126	127	121

Calendar Year

## Average Daily Census Critical Care

Average Daily  
Census

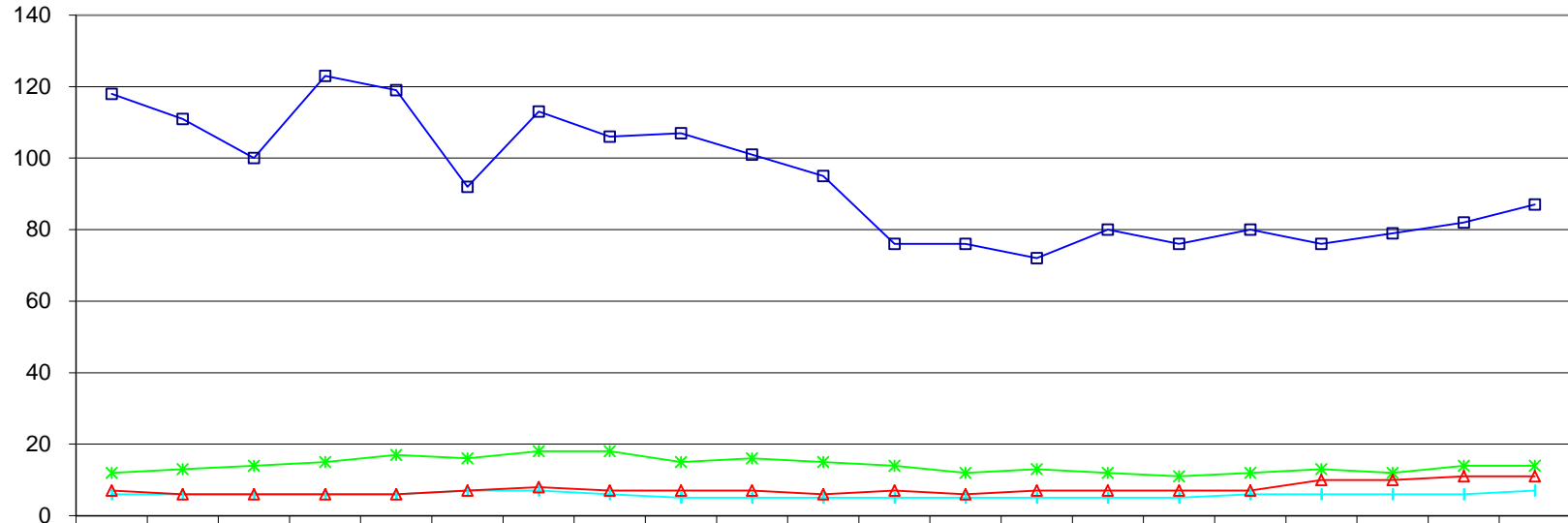


	1984	1985	1986	1987	1988	1989	1990	1991	1992	1993	1994	1995	1996	1997	1998	1999	2000	2001	2002	2003	2004
—□— Honolulu	95	94	98	110	135	157	120	126	129	134	121	119	118	127	126	126	132	131	130	120	117
—*— Hawaii	9	9	10	10	11	12	12	11	9	10	10	9	7	10	10	10	11	12	9	11	13
—+— Kauai	3	3	3	3	4	4	4	4	3	4	4	4	4	4	4	4	4	4	4	4	4
—△— Maui	4	5	5	5	5	5	5	6	6	6	6	7	7	6	7	8	10	11	12	11	9

Calendar Year

# Average Daily Census Obstetric

Average Daily  
Census

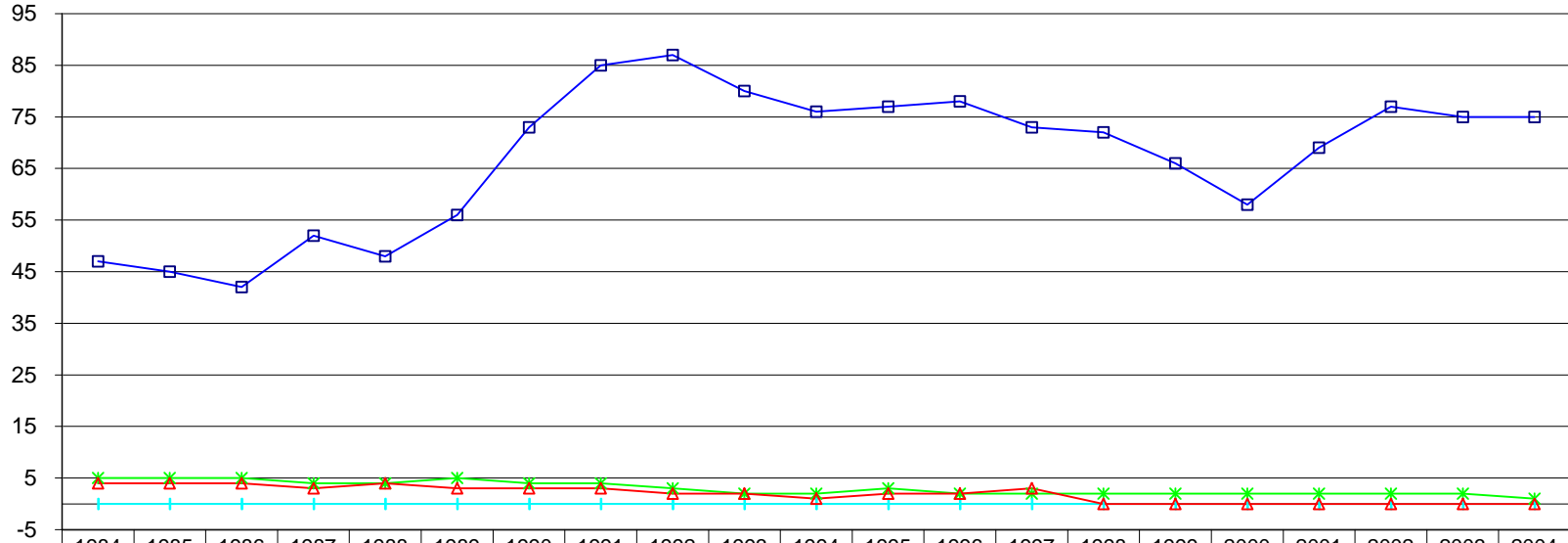


	1984	1985	1986	1987	1988	1989	1990	1991	1992	1993	1994	1995	1996	1997	1998	1999	2000	2001	2002	2003	2004
—□— Honolulu	118	111	100	123	119	92	113	106	107	101	95	76	76	72	80	76	80	76	79	82	87
—*— Hawaii	12	13	14	15	17	16	18	18	15	16	15	14	12	13	12	11	12	13	12	14	14
—+— Kauai	6	6	6	6	6	7	7	6	5	5	5	5	5	5	5	5	6	6	6	6	7
—△— Maui	7	6	6	6	6	7	8	7	7	7	6	7	6	7	7	7	7	10	10	11	11

Calendar Year

## Average Daily Census Pediatic

Average Daily  
Census



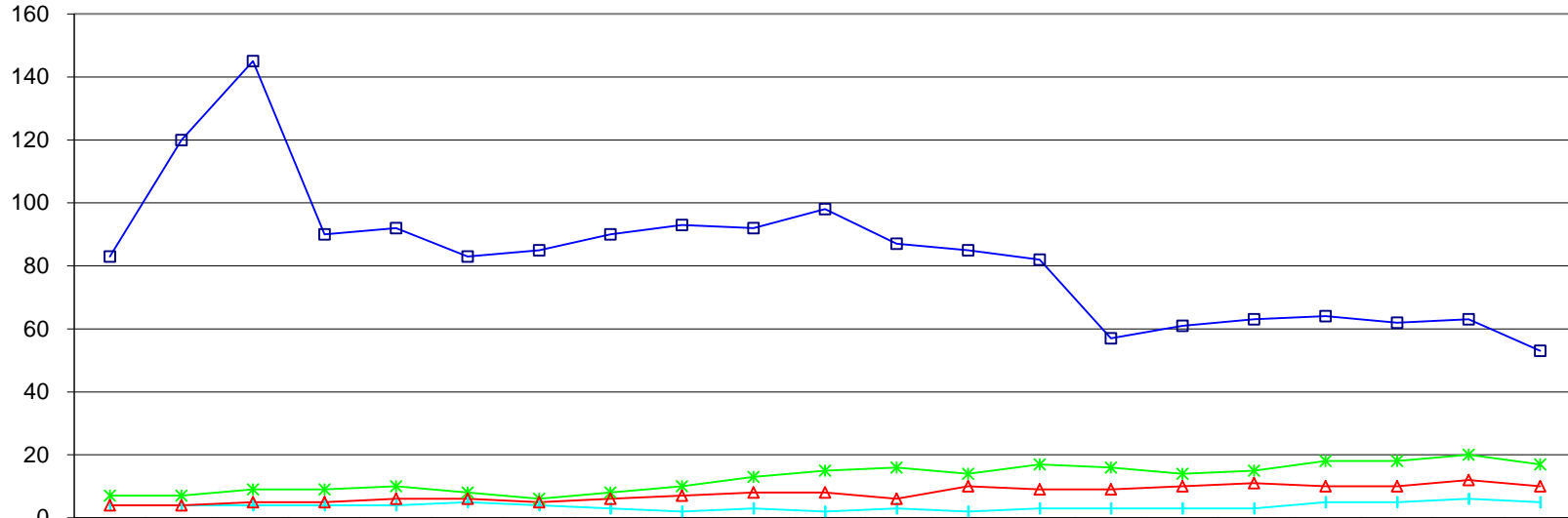
	1984	1985	1986	1987	1988	1989	1990	1991	1992	1993	1994	1995	1996	1997	1998	1999	2000	2001	2002	2003	2004	
—□— Honolulu	47	45	42	52	48	56	73	85	87	80	76	77	78	73	72	66	58	69	77	75	75	
—*— Hawaii	5	5	5	4	4	5	4	4	3	2	2	3	2	2	2	2	2	2	2	2	2	1
—+— Kauai	0	0	0	0	0	0	0	0	0	0	0	0	0	0	0	0	0	0	0	0	0	0
—△— Maui	4	4	4	3	4	3	3	3	2	2	1	2	2	3	0	0	0	0	0	0	0	0

Calendar Year



# Average Daily Census Psychiatric

Average Daily  
Census



	1984	1985	1986	1987	1988	1989	1990	1991	1992	1993	1994	1995	1996	1997	1998	1999	2000	2001	2002	2003	2004
—□— Honolulu	83	120	145	90	92	83	85	90	93	92	98	87	85	82	57	61	63	64	62	63	53
—*— Hawaii	7	7	9	9	10	8	6	8	10	13	15	16	14	17	16	14	15	18	18	20	17
—+— Kauai	4	4	4	4	4	5	4	3	2	3	2	3	2	3	3	3	3	5	5	6	5
—△— Maui	4	4	5	5	6	6	5	6	7	8	8	6	10	9	9	10	11	10	10	12	10

Calendar Year