

**Table 14. Occupancy Rates by County, 1984 - 2004**

	1984	1985	1986	1987	1988	1989	1990	1991	1992	1993	1994	1995	1996	1997	1998	1999	2000	2001	2002	2003	2004	
<b>LONG TERM CARE</b>																						
<i>Oahu</i>	97.3	97.2	90.5	93.7	91.4	95.0	92.9	91.8	94.6	93.9	95.6	91.4	94.5	92.6	93.3	92.7	90.1	92.2	95.5	93.0	93.5	
<i>Hawaii</i>	95.2	95.3	93.8	96.7	92.3	95.1	96.1	98.8	104.3	106.7	108.8	106.8	97.7	95.1	94.0	95.2	92.1	88.2	92.1	94.6	94.8	
<i>Kauai</i>	96.3	91.1	83.0	92.1	86.9	94.0	90.2	94.9	96.1	94.6	101.0	96.9	97.7	96.3	96.0	94.1	77.1	87.6	88.2	90.3	90.8	
<i>Tri-Isle</i>	92.6	97.0	97.3	95.6	95.3	82.9	92.5	95.6	95.7	95.7	94.4	95.4	73.4	76.7	90.1	90.8	94.2	93.9	93.2	92.9	90.0	
<i>Maui</i>	95.0	97.0	97.6	95.7	97.0	83.1	93.2	96.8	97.7	97.4	97.3	97.3	72.9	76.8	91.4	92.1	96.9	95.9	96.2	95.8	92.8	
<i>Molokai</i>	55.8	96.8	89.3	90.1	70.1	77.1	87.4	87.7	77.1	72.5	61.1	66.8	76.2	83.3	87.8	70.6	62.4	65.2	41.3	43.3	26.5	
<i>Lanai</i>	95.1	84.9	---	100.0	---	84.1	77.2	65.0	62.7	83.5	71.0	94.0	95.1	58.1	60.5	76.6	57.0	70.5	72.1	71.2	94.7	
<b>TOTAL ACUTE CARE</b>																						
<i>Oahu</i>	70.8	67.7	67.3	74.4	75.0	74.9	72.0	70.0	72.7	71.9	71.6	69.4	64.7	65.7	62.4	63.7	67.9	66.9	67.3	64.7	65.3	
<i>Hawaii</i>	48.3	48.3	53.8	60.7	67.8	65.8	70.2	71.2	57.9	59.0	58.2	61.4	52.9	56.4	58.7	54.0	63.1	69.0	84.5	68.2	65.9	
<i>Kauai</i>	43.8	50.0	44.4	51.5	53.4	63.5	52.9	47.5	55.4	56.9	51.4	44.5	45.8	47.0	51.9	47.8	46.7	54.7	57.0	62.2	71.2	
<i>Tri-Isle</i>	58.2	57.8	61.5	64.6	69.8	73.3	76.3	82.9	81.0	88.9	90.3	78.3	82.6	71.8	65.8	71.2	71.0	73.8	75.8	76.9	75.6	
<i>Maui</i>	60.4	62.6	65.4	70.1	72.6	80.5	82.2	90.9	88.2	96.8	98.3	83.9	87.6	76.1	69.1	74.9	73.4	76.3	78.5	79.8	79.7	
<i>Molokai</i>	41.4	17.3	25.0	15.8	18.4	10.6	13.7	14.6	7.5	10.3	13.5	8.3	9.6	9.9	14.1	12.9	11.5	13.1	7.0	5.1	12.8	
<i>Lanai</i>	12.7	12.9	---	12.9	---	16.7	11.1	8.3	2.7	0.8	2.4	1.6	1.1	1.0	6.2	3.0	0.0	0.0	0.0	0.0	5.4	
<b>MEDICAL-SURGICAL</b>																						
<i>Oahu</i>	69.8	68.2	68.8	73.3	73.1	74.8	69.5	68.1	71.1	70.9	71.4	70.8	63.9	65.6	61.2	63.3	69.1	68.1	67.6	64.9	65.8	
<i>Hawaii</i>	62.4	62.3	65.1	74.6	80.3	80.2	87.9	89.1	65.1	64.5	62.6	68.6	57.8	60.6	64.6	60.2	71.9	85.6	111.4	83.7	80.2	
<i>Kauai</i>	45.8	54.5	47.6	56.1	55.2	68.8	54.9	50.7	63.4	64.7	57.5	47.2	50.2	51.3	56.8	52.2	47.9	57.8	60.1	64.6	75.1	
<i>Tri-Isle</i>	65.2	65.0	67.7	72.4	78.9	85.5	88.3	98.1	94.6	104.5	108.7	89.4	91.0	76.4	76.2	82.0	80.9	82.9	85.3	86.2	86.5	
<i>Maui</i>	66.1	70.5	72.3	77.7	80.7	92.1	93.4	106.2	101.2	111.8	116.2	93.4	95.7	80.3	79.6	86.0	82.7	85.2	88.0	89.0	91.6	
<i>Molokai</i>	67.4	21.5	25.0	17.7	30.7	13.0	19.9	22.7	10.3	15.6	21.6	12.2	14.1	15.9	23.8	21.7	18.7	18.0	7.2	6.5	17.5	
<i>Lanai</i>	22.5	22.2	---	24.1	---	31.5	16.1	12.1	4.1	1.0	4.4	3.2	1.1	1.0	6.2	3.0	0.0	0.0	0.0	0.0	5.4	

... = Category not applicable. --- = Data not available. Excludes Tripler.

Includes revised 1992 Kapiolani data, revised 1993 Straub data, revised 1994 St. Francis-West Oahu data, revised 1996 Hale Malamalama data and revised 1996

Kaiser data, revised 1997 North Hawaii Community Hospital data, revised 1997 Wahiawa data, revised 1998 Hale Makua (Maui) data, revised 2001 Kauai and Oahu data, revised 2004 Kauai data.

Source: SHPDA, sh04t14.xls

Table 14. Occupancy Rates by County, 1984 - 2004 (Continued)

	1984	1985	1986	1987	1988	1989	1990	1991	1992	1993	1994	1995	1996	1997	1998	1999	2000	2001	2002	2003	2004	
<b>CRITICAL CARE</b>																						
<i>Oahu</i>	63.6	61.1	63.6	69.4	83.4	86.5	70.7	70.0	71.0	76.2	68.9	67.9	64.9	69.6	71.5	71.8	77.9	68.9	66.6	62.7	61.2	
<i>Hawaii</i>	44.9	41.3	50.0	52.9	58.3	69.9	71.0	64.7	43.0	45.0	44.4	41.7	36.6	41.7	42.2	40.6	46.9	46.5	37.3	44.6	53.1	
<i>Kauai</i>	29.5	33.4	30.0	35.8	46.0	44.0	38.8	36.0	35.0	36.0	38.7	39.2	43.7	38.5	48.6	41.6	41.2	34.9	36.4	39.0	45.4	
<i>Maui</i>	51.9	52.9	27.8	67.1	60.7	66.2	68.5	70.5	74.2	78.7	80.8	84.0	83.1	77.7	51.1	61.7	63.7	70.0	74.0	69.1	60.8	
<b>OBSTETRICS</b>																						
<i>Oahu</i>	80.7	75.2	68.4	84.4	81.9	58.4	77.7	67.3	68.0	63.0	57.7	44.8	47.6	45.3	55.8	54.2	51.4	53.8	56.2	60.4	64.3	
<i>Hawaii</i>	33.7	35.3	36.8	43.5	50.8	35.9	40.5	41.0	49.6	51.9	56.7	45.9	45.4	42.8	39.0	34.6	38.4	37.7	48.6	41.6	42.4	
<i>Kauai</i>	38.5	37.9	37.5	37.7	49.6	50.4	55.7	67.6	40.7	41.1	39.8	40.9	37.8	51.7	55.7	35.9	50.1	57.1	57.0	66.3	79.2	
<i>Tri-Isle</i>	32.3	27.6	26.1	26.1	27.3	30.4	35.7	32.5	32.5	28.8	25.4	27.9	29.5	32.7	25.0	26.0	27.4	37.3	37.5	38.9	39.9	
<i>Maui</i>	39.0	33.6	33.3	35.2	34.2	36.7	43.9	40.0	40.5	37.3	32.7	34.6	34.9	39.2	28.6	29.8	31.4	41.5	41.6	43.6	44.4	
<i>Molokai</i>	8.9	4.7	...	10.2	6.1	8.2	7.4	6.4	4.8	5.1	5.3	4.3	5.0	3.9	4.5	4.1	4.3	4.8	6.5	2.7	5.0	
<i>Lanai</i>	6.3	9.9	---	4.9	---	5.8	0.8	1.4	0.0	0.3	1.0	0.0	0.0	0.0	0.0	0.0	0.0	0.0	0.0	0.0	0.0	
<b>PEDIATRICS</b>																						
<i>Oahu</i>	54.8	52.4	47.7	58.8	52.5	64.0	90.7	106.2	109.4	104.7	99.5	101.6	102.2	95.5	94.4	87.1	82.6	85.3	101.4	98.1	98.1	
<i>Hawaii</i>	14.2	14.4	31.3	27.2	24.5	39.6	34.5	31.0	26.4	18.5	20.0	20.0	13.1	15.3	20.8	15.4	16.4	10.3	14.1	11.8	13.2	
<i>Kauai</i>																						
<i>Tri-Isle</i>	76.2	70.7	80.0	68.5	86.5	57.9	64.9	52.4	41.7	46.6	29.8	36.6	35.1	55.6								
<i>Maui</i>	76.2	70.7	80.0	68.5	86.5	57.9	64.9	52.4	41.7	46.6	29.8	36.6	35.1	55.6								
<i>Molokai</i>																						
<b>PSYCHIATRIC</b>																						
<i>Oahu</i>	78.9	62.1	75.1	85.5	87.9	78.6	80.8	69.4	71.9	71.5	76.3	67.8	66.2	63.9	44.0	47.6	48.8	48.3	50.5	48.8	44.5	
<i>Hawaii</i>	35.5	35.0	32.1	47.4	48.9	39.7	32.2	42.0	48.9	64.6	73.7	80.7	69.6	87.3	81.4	70.4	74.6	55.1	57.6	62.3	53.8	
<i>Kauai</i>	48.0	49.2	44.4	48.1	49.4	59.1	46.9	31.6	26.9	32.5	26.2	21.1	19.3	33.5	32.6	33.2	37.9	49.7	54.2	63.2	59.3	
<i>Maui</i>	41.3	39.1	50.0	49.4	55.3	57.8	47.3	58.7	70.9	84.3	78.0	62.6	98.4	92.5	50.8	55.2	61.8	55.5	54.8	62.8	54.3	

... = Category not applicable. --- = Data not available. Excludes Tripler.

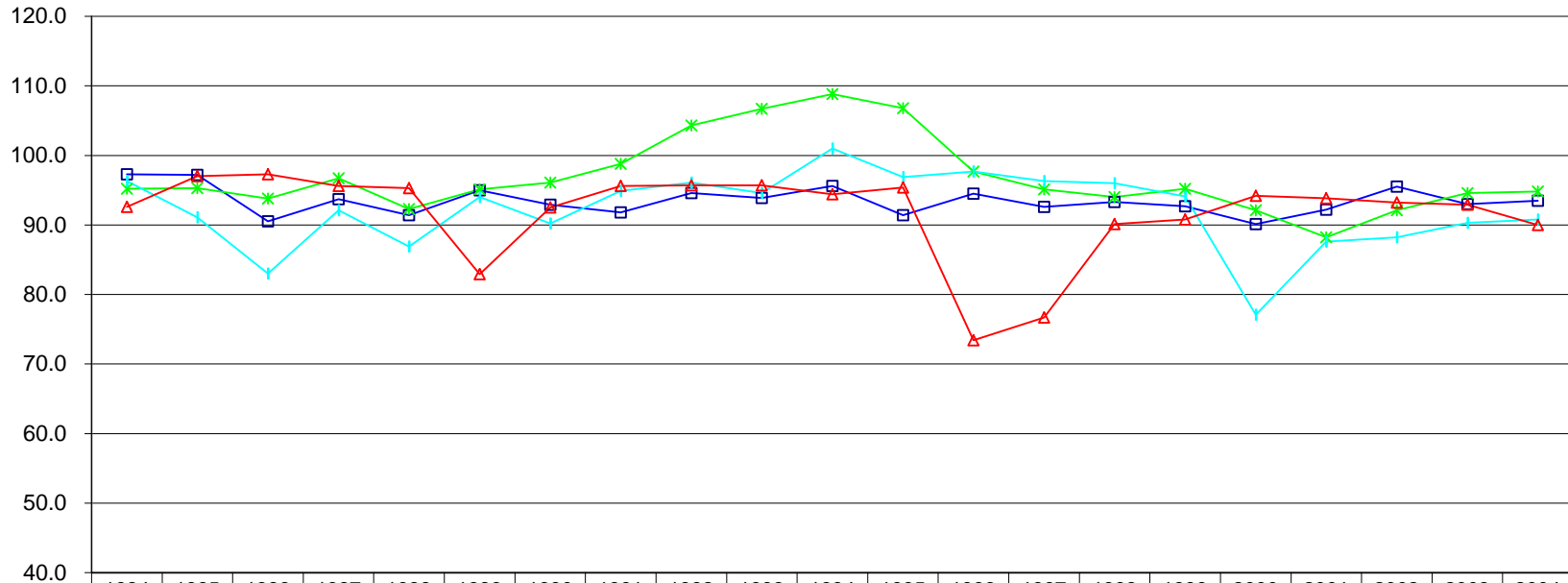
Includes revised 1992 Kapiolani data, revised 1993 Straub data, revised 1994 St. Francis-West Oahu data, revised 1996 Hale Malamalama data and revised 1996

Kaiser data, revised 1997 North Hawaii Community Hospital data, revised 1997 Wahiawa data, revised 1998 Hale Makua (Maui) data, revised 2001 Kauai and Oahu data, revised 2004 Kauai data.

Source: SHPDA, sh04t14.xls

## Occupancy Rates Long Term Care

Occupancy  
Rate (%)

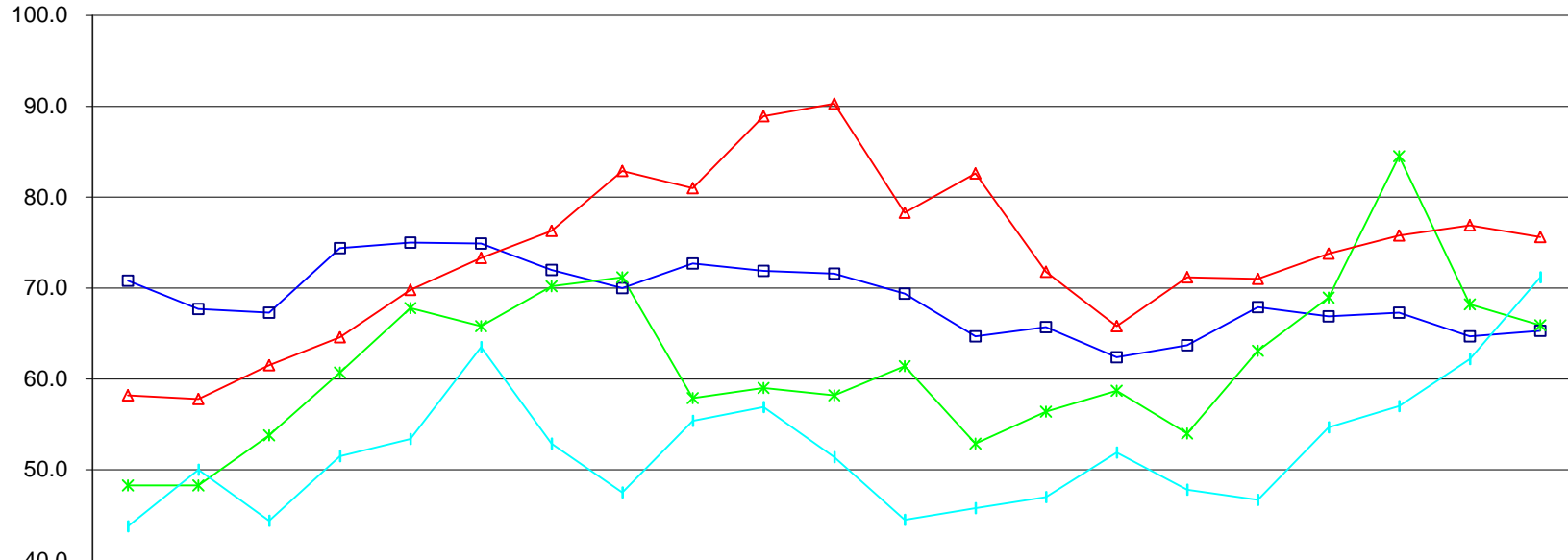


	1984	1985	1986	1987	1988	1989	1990	1991	1992	1993	1994	1995	1996	1997	1998	1999	2000	2001	2002	2003	2004
—■— Honolulu	97.3	97.2	90.5	93.7	91.4	95.0	92.9	91.8	94.6	93.9	95.6	91.4	94.5	92.6	93.3	92.7	90.1	92.2	95.5	93.0	93.5
—*— Hawaii	95.2	95.3	93.8	96.7	92.3	95.1	96.1	98.8	104.3	106.7	108.8	106.8	97.7	95.1	94.0	95.2	92.1	88.2	92.1	94.6	94.8
—+— Kauai	96.3	91.1	83.0	92.1	86.9	94.0	90.2	94.9	96.1	94.6	101.0	96.9	97.7	96.3	96.0	94.1	77.1	87.6	88.2	90.3	90.8
—▲— Maui	92.6	97.0	97.3	95.6	95.3	82.9	92.5	95.6	95.7	95.7	94.4	95.4	73.4	76.7	90.1	90.8	94.2	93.9	93.2	92.9	90.0

Calendar Year

## Occupancy Rates Total Acute Care

Occupancy  
Rate (%)

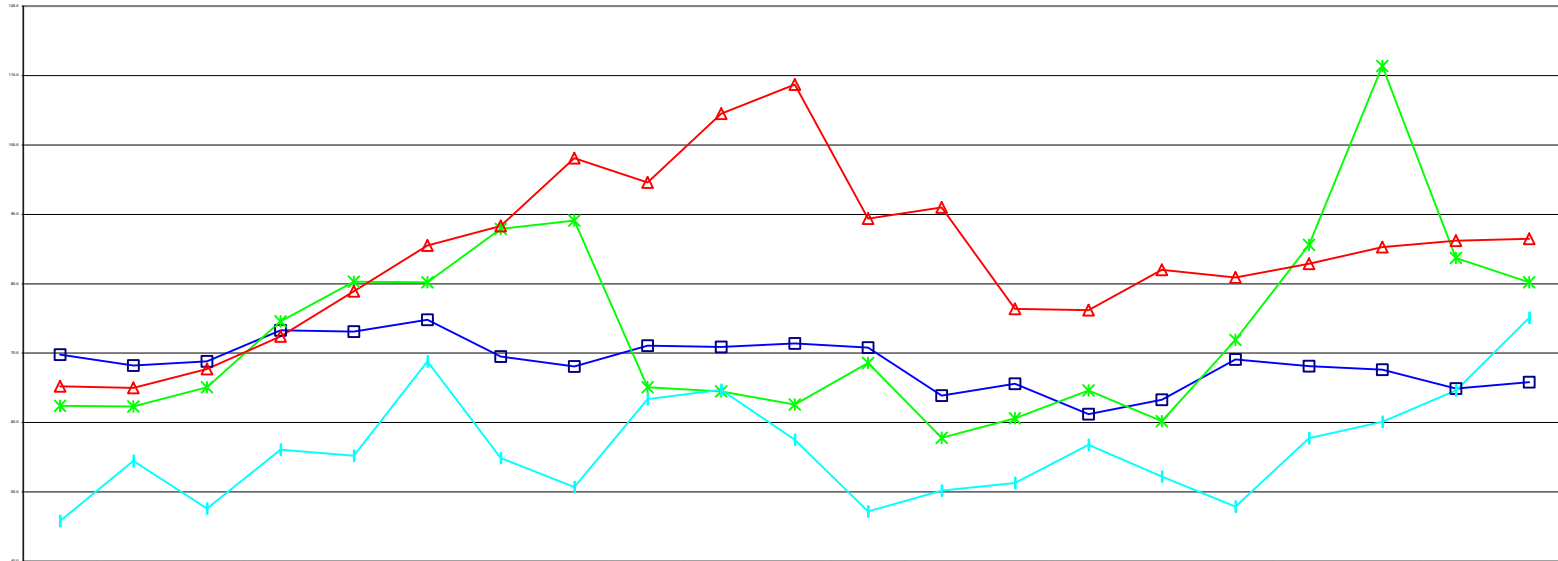


	1984	1985	1986	1987	1988	1989	1990	1991	1992	1993	1994	1995	1996	1997	1998	1999	2000	2001	2002	2003	2004
—■— Honolulu	70.8	67.7	67.3	74.4	75.0	74.9	72.0	70.0	72.7	71.9	71.6	69.4	64.7	65.7	62.4	63.7	67.9	66.9	67.3	64.7	65.3
—*— Hawaii	48.3	48.3	53.8	60.7	67.8	65.8	70.2	71.2	57.9	59.0	58.2	61.4	52.9	56.4	58.7	54.0	63.1	69.0	84.5	68.2	65.9
—+— Kauai	43.8	50.0	44.4	51.5	53.4	63.5	52.9	47.5	55.4	56.9	51.4	44.5	45.8	47.0	51.9	47.8	46.7	54.7	57.0	62.2	71.2
—△— Maui	58.2	57.8	61.5	64.6	69.8	73.3	76.3	82.9	81.0	88.9	90.3	78.3	82.6	71.8	65.8	71.2	71.0	73.8	75.8	76.9	75.6

Calendar Year

# Occupancy Rates Medical-Surgical

Occupancy  
Rate (%)

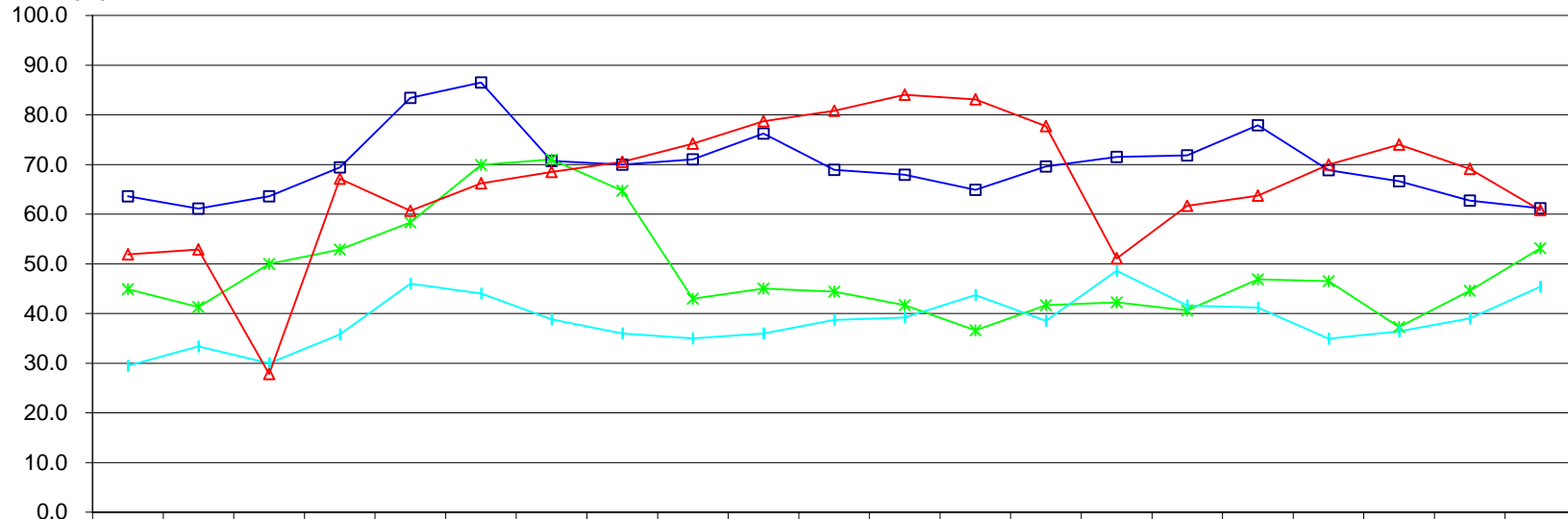


	1984	1985	1986	1987	1988	1989	1990	1991	1992	1993	1994	1995	1996	1997	1998	1999	2000	2001	2002	2003	2004
—■— Honolulu	69.8	68.2	68.8	73.3	73.1	74.8	69.5	68.1	71.1	70.9	71.4	70.8	63.9	65.6	61.2	63.3	69.1	68.1	67.6	64.9	65.8
—*— Hawaii	62.4	62.3	65.1	74.6	80.3	80.2	87.9	89.1	65.1	64.5	62.6	68.6	57.8	60.6	64.6	60.2	71.9	85.6	111.4	83.7	80.2
—▲— Kauai	45.8	54.5	47.6	56.1	55.2	68.8	54.9	50.7	63.4	64.7	57.5	47.2	50.2	51.3	56.8	52.2	47.9	57.8	60.1	64.6	75.1
—▲— Maui	65.2	65.0	67.7	72.4	78.9	85.5	88.3	98.1	94.6	104.5	108.7	89.4	91.0	76.4	76.2	82.0	80.9	82.9	85.3	86.2	86.5

Calendar Year

## Occupancy Rates Critical Care

Occupancy  
Rate (%)

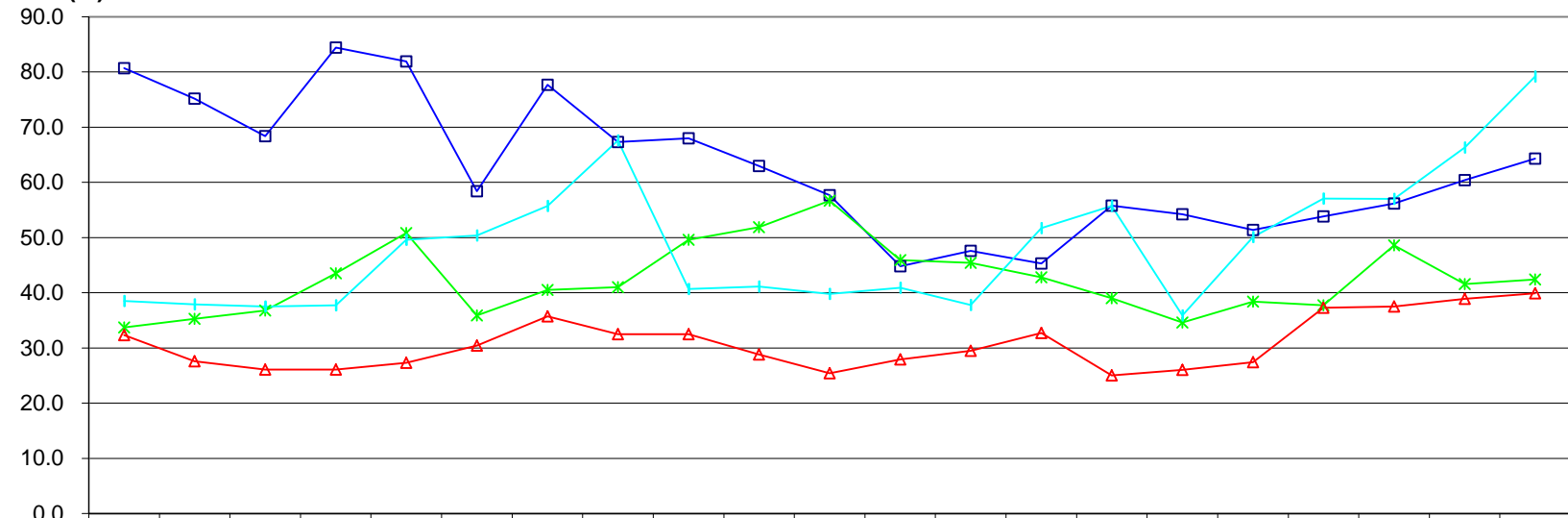


	1984	1985	1986	1987	1988	1989	1990	1991	1992	1993	1994	1995	1996	1997	1998	1999	2000	2001	2002	2003	2004
—■— Honolulu	63.6	61.1	63.6	69.4	83.4	86.5	70.7	70.0	71.0	76.2	68.9	67.9	64.9	69.6	71.5	71.8	77.9	68.9	66.6	62.7	61.2
—*— Hawaii	44.9	41.3	50.0	52.9	58.3	69.9	71.0	64.7	43.0	45.0	44.4	41.7	36.6	41.7	42.2	40.6	46.9	46.5	37.3	44.6	53.1
—+— Kauai	29.5	33.4	30.0	35.8	46.0	44.0	38.8	36.0	35.0	36.0	38.7	39.2	43.7	38.5	48.6	41.6	41.2	34.9	36.4	39.0	45.4
—▲— Maui	51.9	52.9	27.8	67.1	60.7	66.2	68.5	70.5	74.2	78.7	80.8	84.0	83.1	77.7	51.1	61.7	63.7	70.0	74.0	69.1	60.8

Calendar Year

## Occupancy Rates Obstetric

Occupancy  
Rate (%)

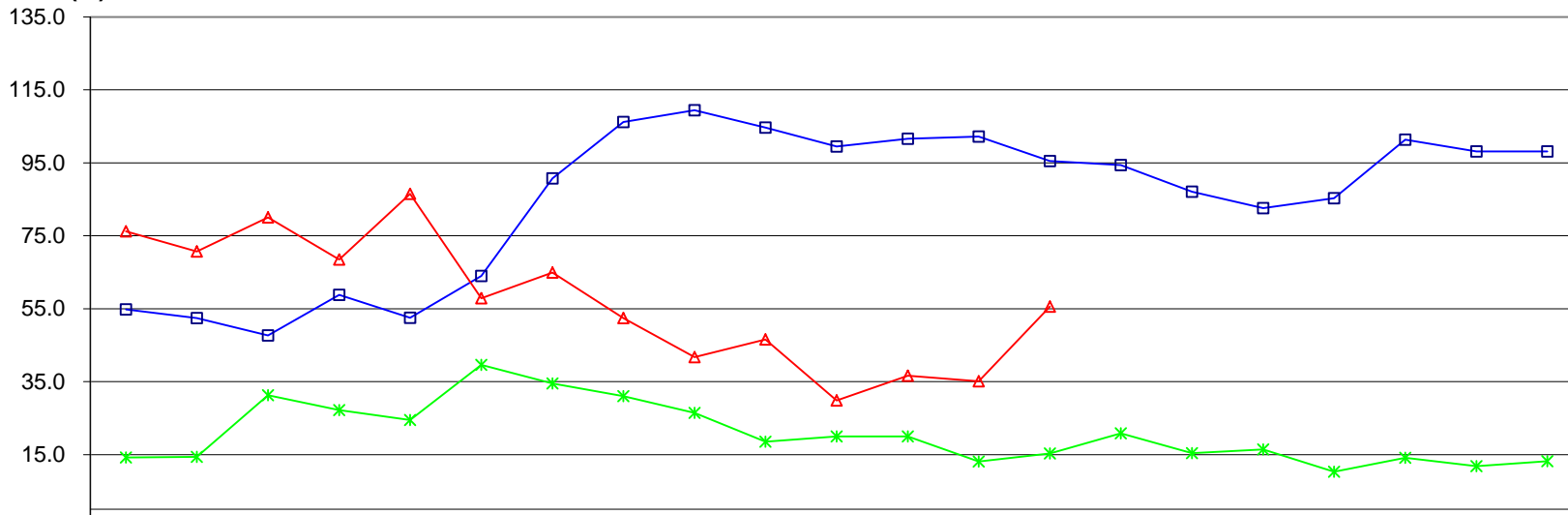


	1984	1985	1986	1987	1988	1989	1990	1991	1992	1993	1994	1995	1996	1997	1998	1999	2000	2001	2002	2003	2004
—■— Honolulu	80.7	75.2	68.4	84.4	81.9	58.4	77.7	67.3	68.0	63.0	57.7	44.8	47.6	45.3	55.8	54.2	51.4	53.8	56.2	60.4	64.3
—*— Hawaii	33.7	35.3	36.8	43.5	50.8	35.9	40.5	41.0	49.6	51.9	56.7	45.9	45.4	42.8	39.0	34.6	38.4	37.7	48.6	41.6	42.4
—+— Kauai	38.5	37.9	37.5	37.7	49.6	50.4	55.7	67.6	40.7	41.1	39.8	40.9	37.8	51.7	55.7	35.9	50.1	57.1	57.0	66.3	79.2
—▲— Maui	32.3	27.6	26.1	26.1	27.3	30.4	35.7	32.5	32.5	28.8	25.4	27.9	29.5	32.7	25.0	26.0	27.4	37.3	37.5	38.9	39.9

Calendar Year

## Occupancy Rates Pediatric

Occupancy  
Rate (%)



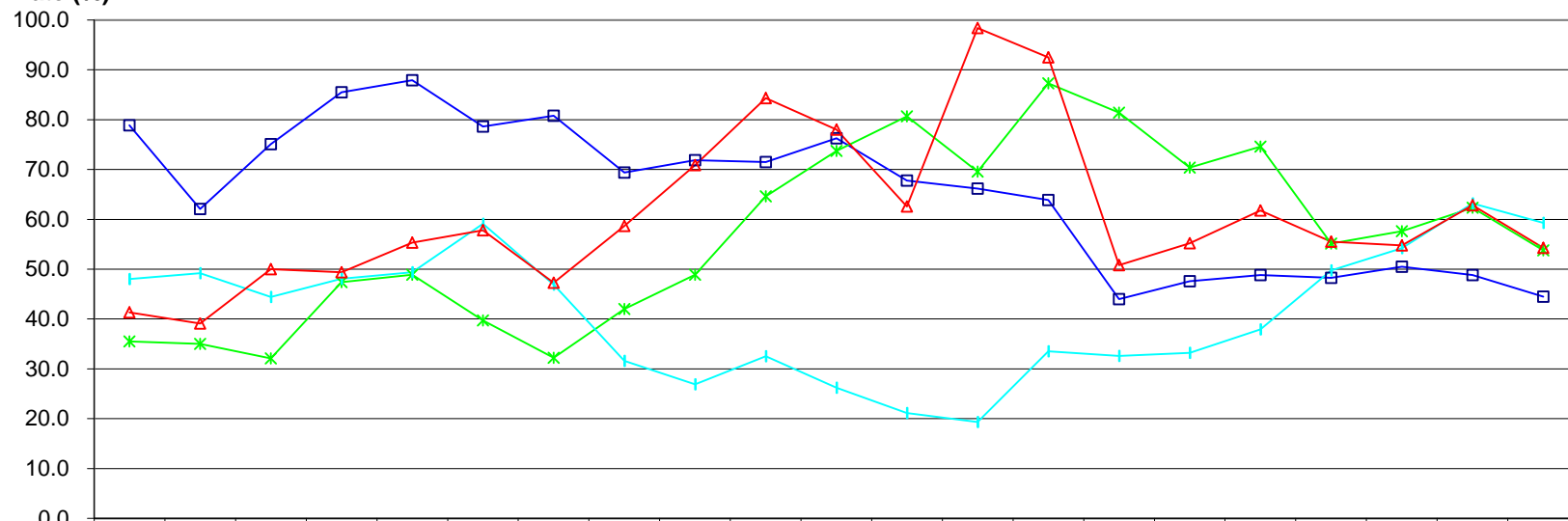
	1984	1985	1986	1987	1988	1989	1990	1991	1992	1993	1994	1995	1996	1997	1998	1999	2000	2001	2002	2003	2004	
—■— Honolulu	54.8	52.4	47.7	58.8	52.5	64.0	90.7	106.2	109.4	104.7	99.5	101.6	102.2	95.5	94.4	87.1	82.6	85.3	101.4	98.1	98.1	
—*— Hawaii	14.2	14.4	31.3	27.2	24.5	39.6	34.5	31.0	26.4	18.5	20.0	20.0	13.1	15.3	20.8	15.4	16.4	10.3	14.1	11.8	13.2	
—+— Kauai																						
—▲— Maui	76.2	70.7	80.0	68.5	86.5	57.9	64.9	52.4	41.7	46.6	29.8	36.6	35.1	55.6								

Calendar Year



## Occupancy Rates Psychiatric

Occupancy  
Rate (%)



	1984	1985	1986	1987	1988	1989	1990	1991	1992	1993	1994	1995	1996	1997	1998	1999	2000	2001	2002	2003	2004
—■— Honolulu	78.9	62.1	75.1	85.5	87.9	78.6	80.8	69.4	71.9	71.5	76.3	67.8	66.2	63.9	44.0	47.6	48.8	48.3	50.5	48.8	44.5
—*— Hawaii	35.5	35.0	32.1	47.4	48.9	39.7	32.2	42.0	48.9	64.6	73.7	80.7	69.6	87.3	81.4	70.4	74.6	55.1	57.6	62.3	53.8
—+— Kauai	48.0	49.2	44.4	48.1	49.4	59.1	46.9	31.6	26.9	32.5	26.2	21.1	19.3	33.5	32.6	33.2	37.9	49.7	54.2	63.2	59.3
—▲— Maui	41.3	39.1	50.0	49.4	55.3	57.8	47.3	58.7	70.9	84.3	78.0	62.6	98.4	92.5	50.8	55.2	61.8	55.5	54.8	62.8	54.3

Calendar Year