

Table 13. Average Length of Stay by County, 1984 - 2004

	1984	1985	1986	1987	1988	1989	1990	1991	1992	1993	1994	1995	1996	1997	1998	1999	2000	2001	2002	2003	2004
LONG TERM CARE																					
Oahu	452	412	419	444	434	458	383	361	357	336	361	308	264	233	223	225	209	207	194	173	172
Hawaii	274	287	296	359	324	324	335	424	453	492	494	411	291	361	261	270	234	234	265	219	179
Kauai	194	195	101	201	236	289	259	261	277	260	318	274	283	203	199	168	156	187	232	200	255
Tri-Isle	264	412	372	403	301	387	450	486	555	623	765	586	407	294	271	279	296	350	288	274	222
Maui	263	427	418	417	410	568	544	645	627	897	846	736	541	358	310	356	334	377	337	308	218
Molokai	195	260	95	200	45	70	128	108	155	91	377	122	70	66	69	41	88	374	64	81	304
Lanai	696	276	---	496	---	136	225	127	...	271	216	229	289	318	442	233	85	80	66	76	576
TOTAL ACUTE CARE																					
Oahu	5.9	6.5	6.8	7.1	7.1	7.2	7.3	7.2	7.4	7.2	7.0	7.0	6.7	6.7	6.1	6.5	6.4	6.4	6.1	6.0	5.7
Hawaii	4.3	4.3	4.5	4.9	5.2	5.5	5.4	6.4	4.5	4.7	4.7	4.8	4.1	4.6	4.4	4.1	4.8	5.2	4.9	4.4	4.4
Kauai	4.4	4.4	3.6	4.3	4.3	5.1	4.5	4.1	5.0	4.9	5.0	4.1	4.1	3.8	3.8	3.8	3.4	3.3	3.3	3.3	3.8
Tri-Isle	4.7	4.7	4.6	4.7	4.8	5.0	5.2	5.7	5.6	6.0	6.2	6.4	6.4	5.4	5.2	5.4	5.4	5.3	5.4	5.2	4.3
Maui	4.9	4.8	3.5	4.8	4.9	5.0	5.2	5.8	5.6	6.0	6.3	6.4	6.5	5.5	5.3	5.4	5.4	5.4	5.4	5.3	4.4
Molokai	2.9	3.1	3.5	3.3	2.8	2.2	2.4	2.6	2.4	2.2	2.7	2.5	2.1	2.5	2.4	2.1	2.2	2.2	2.1	1.6	2.1
Lanai	4.3	2.9	---	2.8	---	3.5	3.7	2.8	3.8	1.7	2.2	2.7	2.4	1.3	2.8	1.0	0.0	0.0	0.0	0.0	2.5
MEDICAL-SURGICAL																					
Oahu	6.7	7.2	7.6	8.4	8.2	8.4	8.8	8.7	8.9	8.7	8.3	8.1	7.5	7.7	7.1	7.3	7.1	7.1	6.7	6.7	6.2
Hawaii	5.5	5.3	5.5	6.3	7.2	7.6	7.9	9.2	5.7	5.9	5.9	6.3	4.8	5.5	5.2	4.7	6.5	6.3	5.5	4.7	5.0
Kauai	5.3	5.2	4.0	5.2	5.1	6.1	5.3	5.1	6.2	6.3	6.5	4.8	5.0	4.3	4.0	4.1	3.6	3.5	3.5	3.4	4.1
Tri-Isle	5.7	5.6	5.7	5.7	5.6	6.1	6.5	7.2	7.1	7.7	7.9	8.2	8.2	6.7	6.1	6.2	6.1	5.8	5.8	5.7	4.5
Maui	5.9	5.8	5.8	5.9	5.7	6.2	6.6	7.3	7.1	7.8	8.0	8.3	8.3	6.7	6.1	6.3	6.1	5.8	5.8	5.7	4.5
Molokai	3.2	3.3	4.0	4.1	3.9	4.2	3.5	3.7	3.6	2.8	3.7	3.6	2.8	3.4	2.9	2.3	2.7	3.3	2.9	1.8	2.3
Lanai	4.9	3.1	---	3.0	---	3.7	4.1	2.8	3.8	1.9	2.4	2.7	2.4	1.3	2.8	1.0	0.0	0.0	0.0	0.0	2.5

... = Category not applicable. --- = Data not available. Excludes Tripler.

Includes revised 1992 Kapiolani data, revised 1993 Straub data, revised 1994 St. Francis-West Oahu data, revised 1996 Kaiser data, revised 1997 Wahiawa data, revised 2001 Kauai and Oahu data, revised 2002 Island Nursing Home data, and revised 2004 Garden Isle Healthcare data.

Source: SHPDA, sh04t13.xls

Table 13. Average Length of Stay by County, 1984 - 2004 (Continued)

	1984	1985	1986	1987	1988	1989	1990	1991	1992	1993	1994	1995	1996	1997	1998	1999	2000	2001	2002	2003	2004
CRITICAL CARE																					
<i>Oahu</i>	5.0	5.8	5.9	6.2	8.5	10.4	7.4	6.9	7.0	7.1	6.8	7.2	7.8	7.5	8.0	8.8	8.9	6.8	6.7	5.6	5.9
<i>Hawaii</i>	2.6	2.5	2.5	2.4	2.5	2.8	2.9	3.3	2.5	2.7	2.4	2.0	2.5	2.8	2.9	2.7	1.8	3.0	3.3	3.4	3.3
<i>Kauai</i>	1.8	2.0	1.8	1.9	2.2	2.4	2.2	2.1	2.2	2.1	2.4	2.3	2.4	2.3	3.4	2.4	2.4	2.1	2.0	2.1	2.4
<i>Maui</i>	2.8	3.1	3.3	2.8	3.2	2.8	3.0	3.3	2.9	2.9	3.3	3.6	3.7	3.7	3.6	4.0	5.3	6.0	7.3	5.1	5.0
OBSTETRICS																					
<i>Oahu</i>	3.2	3.2	3.3	3.3	3.1	2.3	2.7	2.5	2.5	2.4	2.4	2.1	2.2	2.2	2.5	2.4	2.4	2.4	2.4	2.5	2.5
<i>Hawaii</i>	2.2	2.4	2.6	2.5	2.4	2.4	2.3	2.7	2.1	2.2	2.2	2.1	2.1	2.2	1.9	1.8	2.1	2.2	2.0	2.2	2.1
<i>Kauai</i>	2.4	2.5	2.4	2.5	2.4	2.5	2.6	2.1	2.1	2.0	2.0	2.1	2.0	1.9	2.1	2.3	2.2	2.0	1.9	1.9	2.3
<i>Tri-Isle</i>	2.0	1.9	1.7	1.8	1.8	1.6	1.7	1.6	1.6	1.5	1.4	1.4	1.4	1.6	1.6	1.6	1.7	2.3	2.3	2.3	2.2
<i>Maui</i>	2.0	1.9	1.7	1.9	1.8	1.6	1.7	1.6	1.7	1.5	1.4	1.4	1.4	1.6	1.6	1.6	1.8	2.4	2.4	2.3	2.2
<i>Molokai</i>	1.4	1.4	1.4	1.7	1.2	1.3	1.3	1.3	1.4	1.3	1.3	1.3	1.2	1.3	1.2	1.4	1.2	0.7	1.4	1.2	1.5
<i>Lanai</i>	2.1	2.1	---	1.5	---	2.1	1.0	1.7	0.0	1.0	1.0	0.0	0.0	0.0	0.0	0.0	0.0	0.0	0.0	0.0	0.0
PEDIATRICS																					
<i>Oahu</i>	3.9	3.9	4.0	4.4	3.8	4.3	5.5	5.8	6.4	5.9	5.7	5.8	6.5	5.7	5.6	5.5	5.7	5.8	5.8	5.8	5.9
<i>Hawaii</i>	2.7	2.7	2.8	2.8	2.9	3.6	2.8	2.9	2.5	2.6	2.4	2.2	1.9	2.2	2.3	2.0	2.3	1.5	2.1	1.9	2.2
<i>Kauai</i>																					
<i>Tri-Isle</i>	3.5	3.0	2.7	2.3	3.2	2.9	2.8	2.6	2.4	2.5	2.2	2.3	2.4	2.6							
<i>Maui</i>	3.5	3.0	2.7	2.3	3.2	2.9	2.8	2.6	2.4	2.5	2.2	2.3	2.4	2.6							
<i>Molokai</i>																					
PSYCHIATRIC																					
<i>Oahu</i>	11.9	12.3	13.8	11.9	11.8	11.3	11.0	11.0	10.9	9.9	8.6	8.1	7.9	8.1	3.1	6.4	5.9	6.4	6.4	6.7	6.6
<i>Hawaii</i>	6.3	6.0	7.1	7.8	9.3	7.7	6.2	10.1	8.2	9.9	10.0	8.7	6.8	8.1	8.3	7.1	7.2	7.7	6.4	8.3	7.7
<i>Kauai</i>	6.4	5.6	7.0	5.9	8.6	10.7	9.7	8.1	10.5	6.8	10.1	10.5	8.8	13.3	12.0	8.5	8.7	9.3	11.8	11.9	11.6
<i>Maui</i>	7.3	6.8	6.8	6.0	7.2	8.6	8.8	10.4	10.0	11.1	8.7	6.9	7.2	7.6	6.9	6.5	6.7	6.2	6.3	7.7	7.5

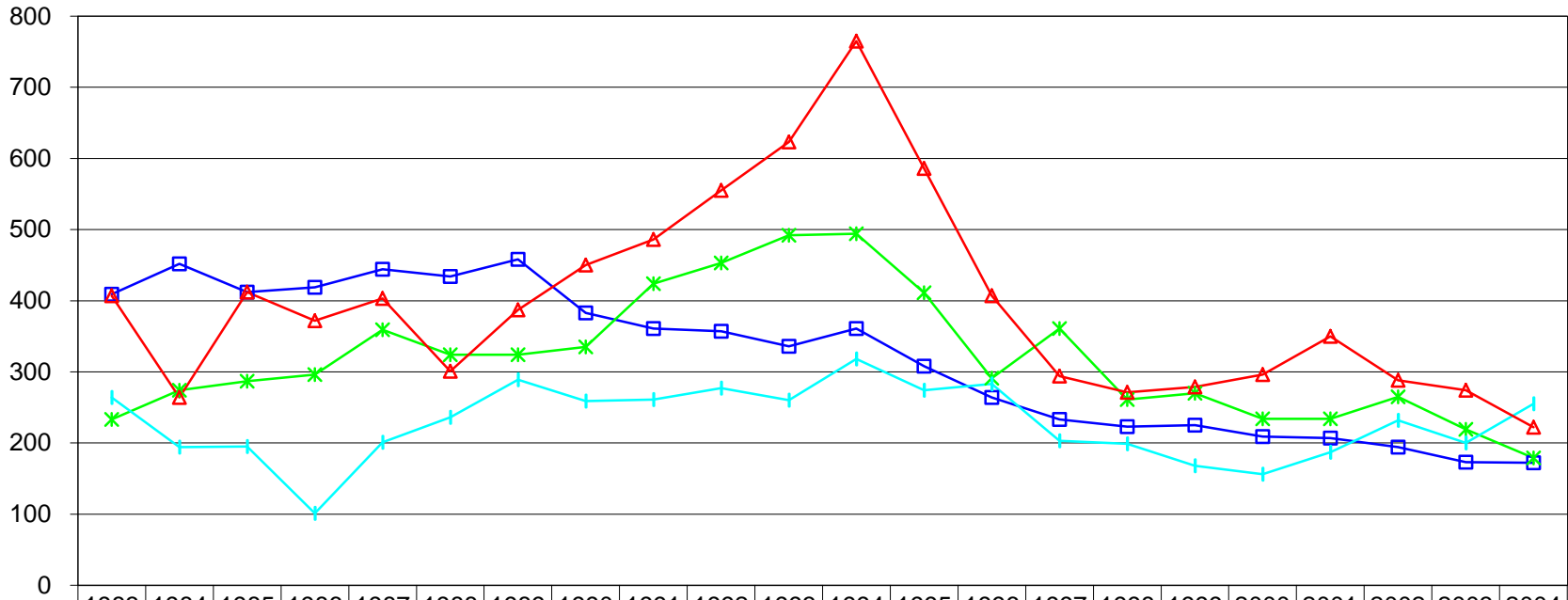
... = Category not applicable. --- = Data not available. Excludes Tripler.

Includes revised 1992 Kapiolani data, revised 1993 Straub data, revised 1994 St. Francis-West Oahu data, revised 1996 Kaiser data, revised 1997 Wahiawa data, revised 2001 Kauai and Oahu data, revised 2002 Island Nursing Home data, and revised 2004 Garden Isle Healthcare data.

Source: SHPDA, sh04t13.xls

Average Length of Stay Long Term Care

**Average Length
of Stay (Days)**

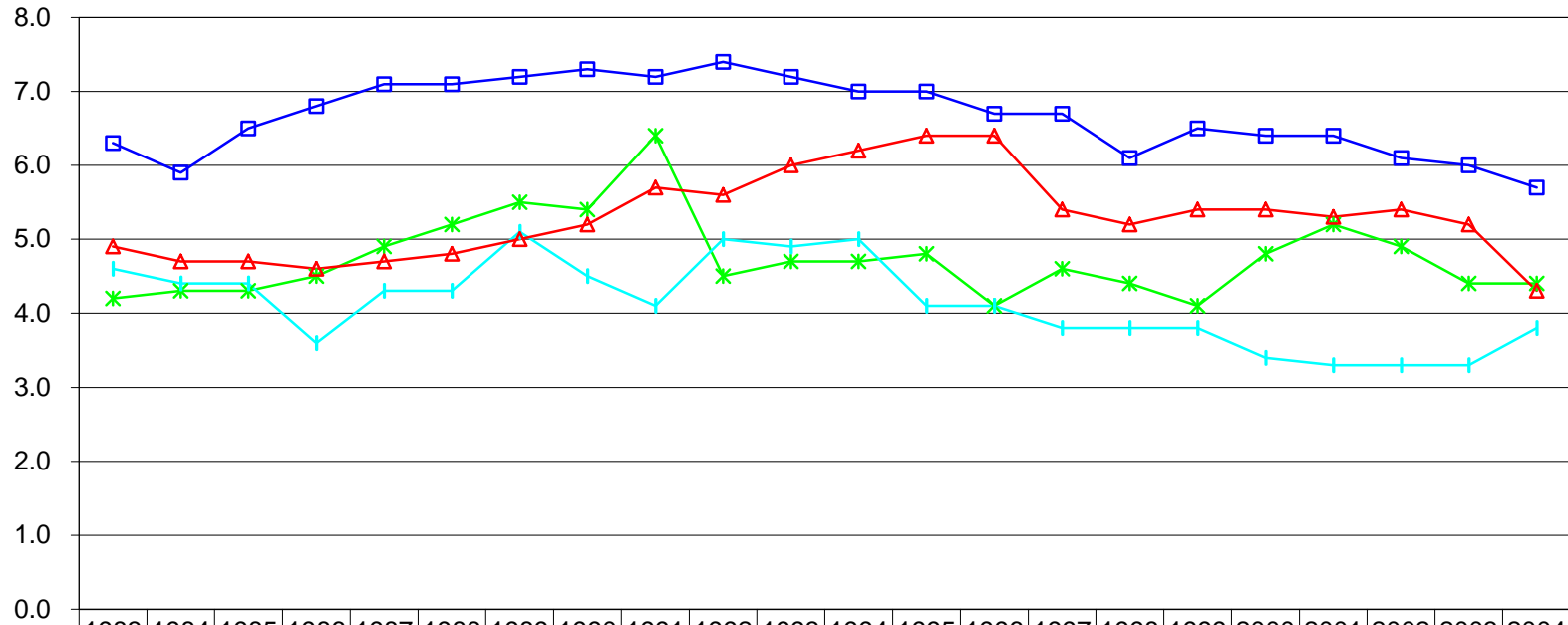


	1983	1984	1985	1986	1987	1988	1989	1990	1991	1992	1993	1994	1995	1996	1997	1998	1999	2000	2001	2002	2003	2004
—■— Honolulu	409	452	412	419	444	434	458	383	361	357	336	361	308	264	233	223	225	209	207	194	173	172
—*— Hawaii	233	274	287	296	359	324	324	335	424	453	492	494	411	291	361	261	270	234	234	265	219	179
—+— Kauai	264	194	195	101	201	236	289	259	261	277	260	318	274	283	203	199	168	156	187	232	200	255
—▲— Maui	407	264	412	372	403	301	387	450	486	555	623	765	586	407	294	271	279	296	350	288	274	222

Calendar Years

Average Length of Stay Total Acute Care

**Average Length
of Stay (Days)**

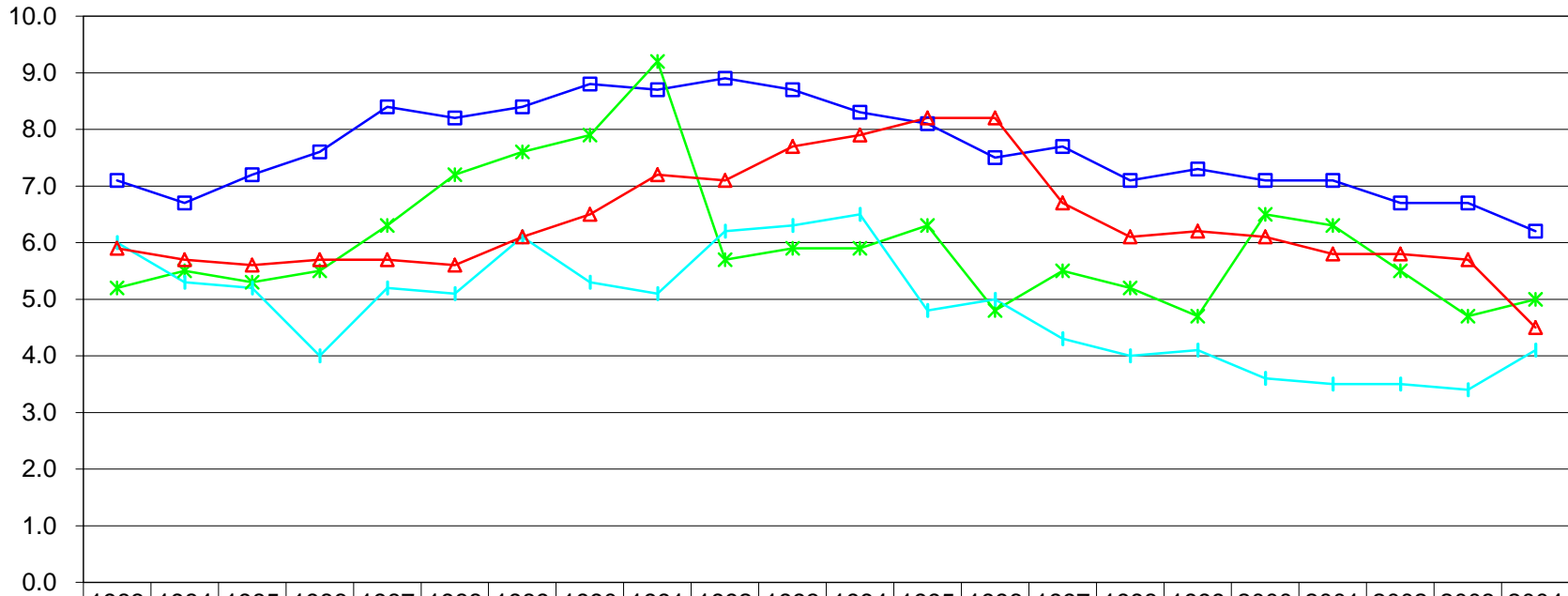


	1983	1984	1985	1986	1987	1988	1989	1990	1991	1992	1993	1994	1995	1996	1997	1998	1999	2000	2001	2002	2003	2004
—□— Honolulu	6.3	5.9	6.5	6.8	7.1	7.1	7.2	7.3	7.2	7.4	7.2	7.0	7.0	6.7	6.7	6.1	6.5	6.4	6.4	6.1	6.0	5.7
—*— Hawaii	4.2	4.3	4.3	4.5	4.9	5.2	5.5	5.4	6.4	4.5	4.7	4.7	4.8	4.1	4.6	4.4	4.1	4.8	5.2	4.9	4.4	4.4
—+— Kauai	4.6	4.4	4.4	3.6	4.3	4.3	5.1	4.5	4.1	5.0	4.9	5.0	4.1	4.1	3.8	3.8	3.8	3.4	3.3	3.3	3.3	3.8
—△— Maui	4.9	4.7	4.7	4.6	4.7	4.8	5.0	5.2	5.7	5.6	6.0	6.2	6.4	6.4	5.4	5.2	5.4	5.4	5.3	5.4	5.2	4.3

Calendar Years

Average Length of Stay Medical Surgical

**Average Length
of Stay (Days)**

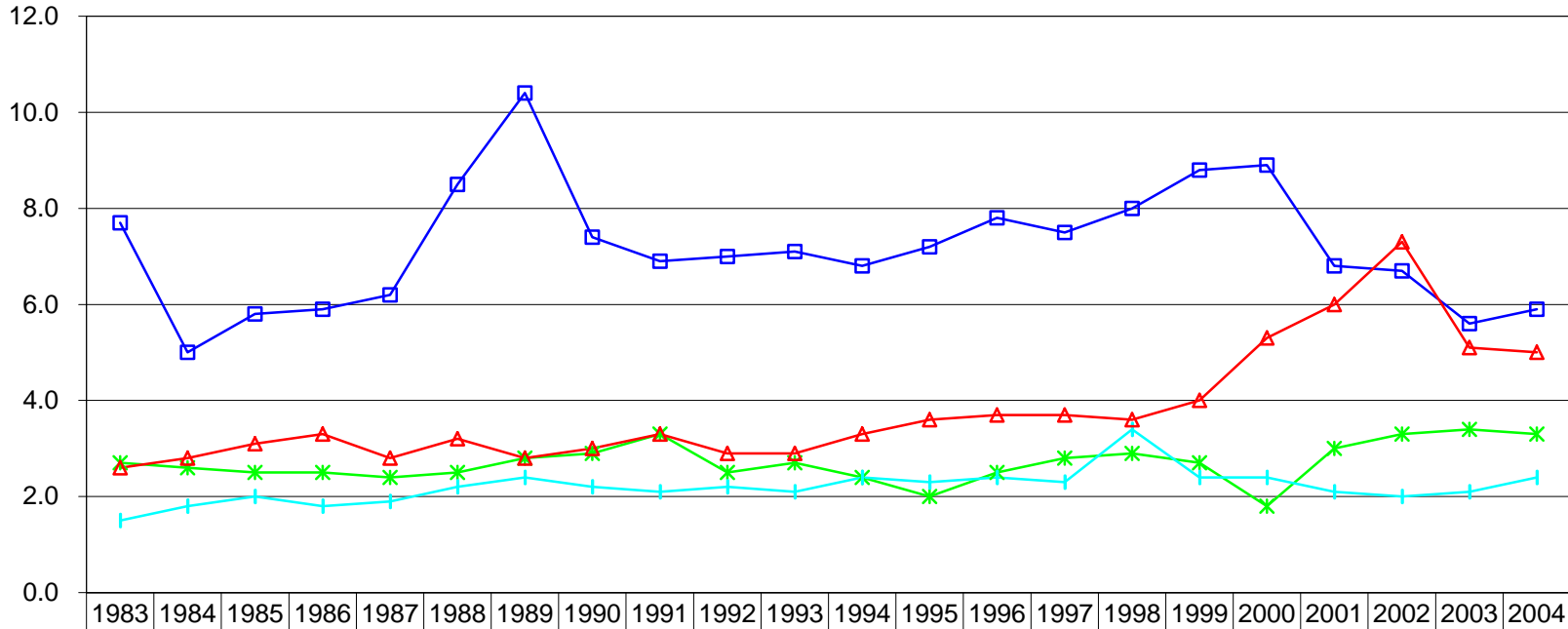


Calendar Years

	1983	1984	1985	1986	1987	1988	1989	1990	1991	1992	1993	1994	1995	1996	1997	1998	1999	2000	2001	2002	2003	2004
—■— Honolulu	7.1	6.7	7.2	7.6	8.4	8.2	8.4	8.8	8.7	8.9	8.7	8.3	8.1	7.5	7.7	7.1	7.3	7.1	7.1	6.7	6.7	6.2
—*— Hawaii	5.2	5.5	5.3	5.5	6.3	7.2	7.6	7.9	9.2	5.7	5.9	5.9	6.3	4.8	5.5	5.2	4.7	6.5	6.3	5.5	4.7	5.0
—+— Kauai	6.0	5.3	5.2	4.0	5.2	5.1	6.1	5.3	5.1	6.2	6.3	6.5	4.8	5.0	4.3	4.0	4.1	3.6	3.5	3.5	3.4	4.1
—▲— Maui	5.9	5.7	5.6	5.7	5.7	5.6	6.1	6.5	7.2	7.1	7.7	7.9	8.2	8.2	6.7	6.1	6.2	6.1	5.8	5.8	5.7	4.5

Average Length of Stay Critical Care

**Average Length
of Stay (Days)**

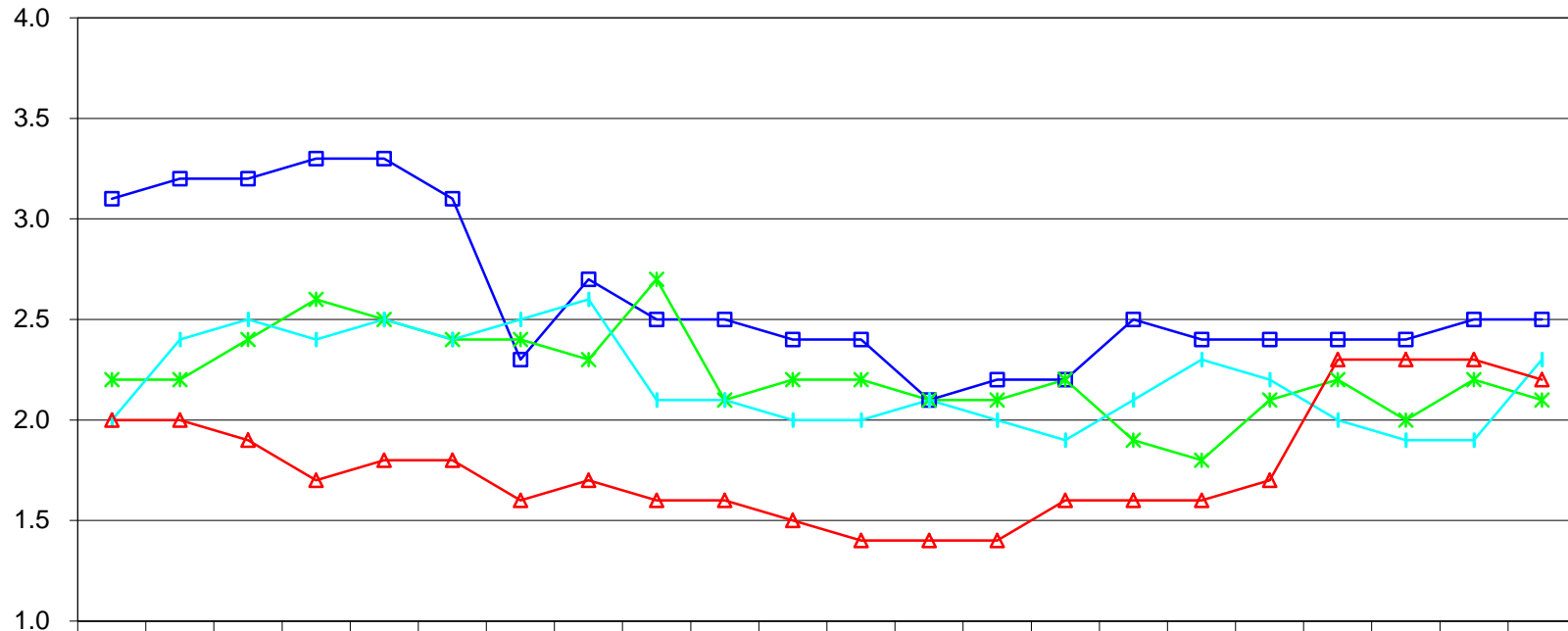


	1983	1984	1985	1986	1987	1988	1989	1990	1991	1992	1993	1994	1995	1996	1997	1998	1999	2000	2001	2002	2003	2004
—□— Honolulu	7.7	5.0	5.8	5.9	6.2	8.5	10.4	7.4	6.9	7.0	7.1	6.8	7.2	7.8	7.5	8.0	8.8	8.9	6.8	6.7	5.6	5.9
—*— Hawaii	2.7	2.6	2.5	2.5	2.4	2.5	2.8	2.9	3.3	2.5	2.7	2.4	2.0	2.5	2.8	2.9	2.7	1.8	3.0	3.3	3.4	3.3
—+— Kauai	1.5	1.8	2.0	1.8	1.9	2.2	2.4	2.2	2.1	2.2	2.1	2.4	2.3	2.4	2.3	3.4	2.4	2.4	2.1	2.0	2.1	2.4
—△— Maui	2.6	2.8	3.1	3.3	2.8	3.2	2.8	3.0	3.3	2.9	2.9	3.3	3.6	3.7	3.7	3.6	4.0	5.3	6.0	7.3	5.1	5.0

Calendar Years

Average Length of Stay Obstetric

**Average Length
of Stay (Days)**

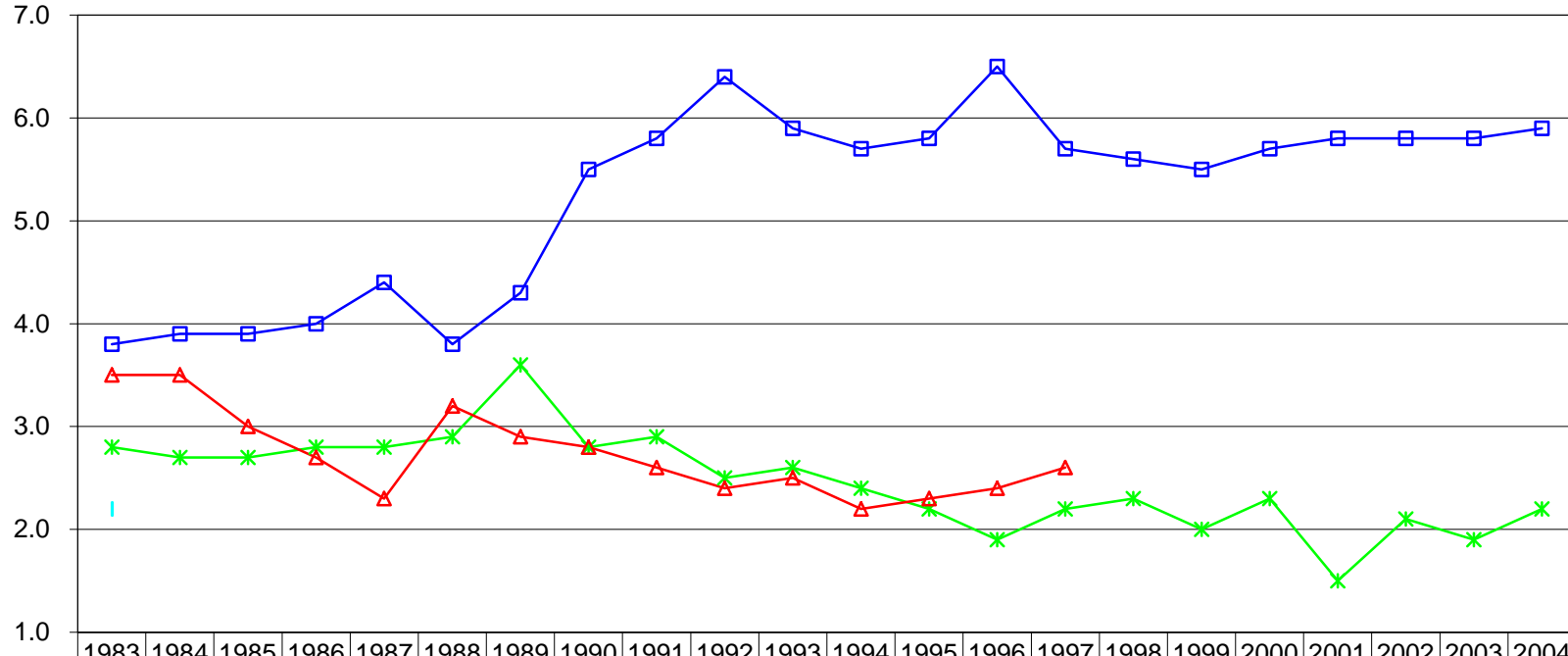


	1983	1984	1985	1986	1987	1988	1989	1990	1991	1992	1993	1994	1995	1996	1997	1998	1999	2000	2001	2002	2003	2004
—□— Honolulu	3.1	3.2	3.2	3.3	3.3	3.1	2.3	2.7	2.5	2.5	2.4	2.4	2.1	2.2	2.2	2.5	2.4	2.4	2.4	2.4	2.5	2.5
—*— Hawaii	2.2	2.2	2.4	2.6	2.5	2.4	2.4	2.3	2.7	2.1	2.2	2.2	2.1	2.1	2.2	1.9	1.8	2.1	2.2	2.0	2.2	2.1
—+— Kauai	2.0	2.4	2.5	2.4	2.5	2.4	2.5	2.6	2.1	2.1	2.0	2.0	2.1	2.0	1.9	2.1	2.3	2.2	2.0	1.9	1.9	2.3
—△— Maui	2.0	2.0	1.9	1.7	1.8	1.8	1.6	1.7	1.6	1.6	1.5	1.4	1.4	1.4	1.6	1.6	1.6	1.7	2.3	2.3	2.3	2.2

Calendar Years

Average Length of Stay Pediatric

**Average Length
of Stay (Days)**

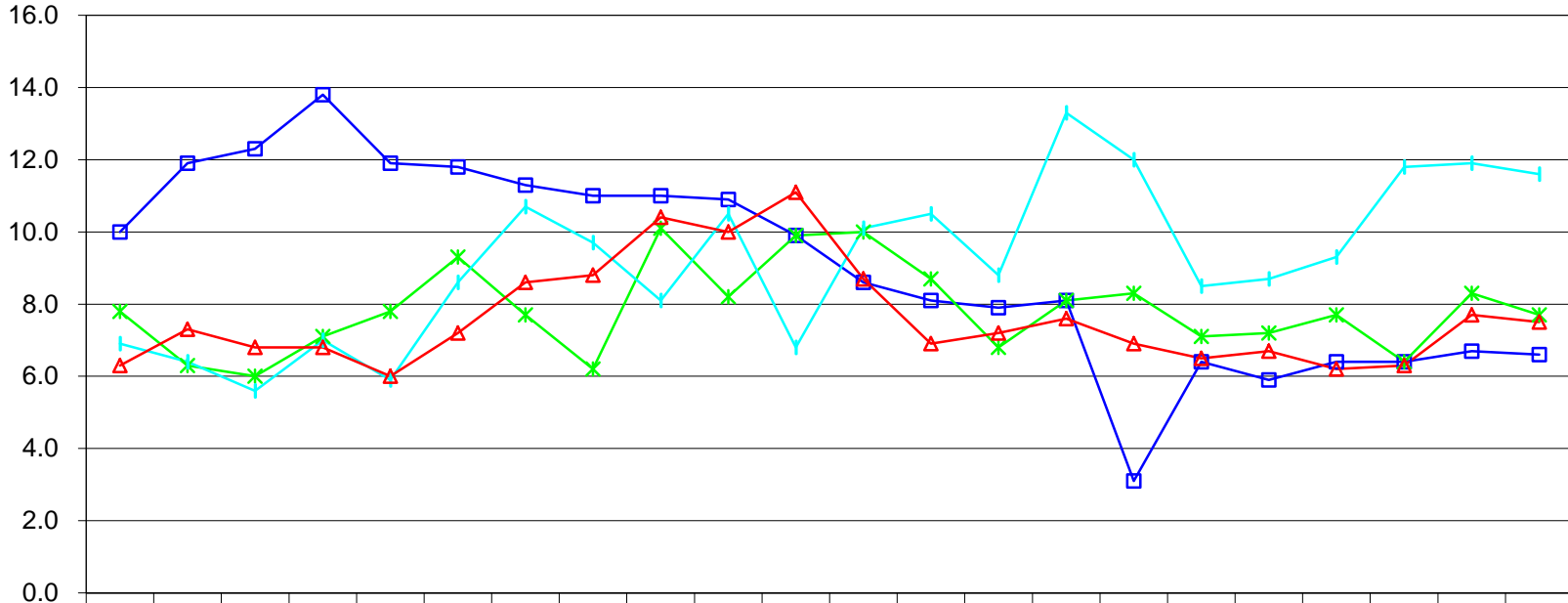


	1983	1984	1985	1986	1987	1988	1989	1990	1991	1992	1993	1994	1995	1996	1997	1998	1999	2000	2001	2002	2003	2004	
—■— Honolulu	3.8	3.9	3.9	4.0	4.4	3.8	4.3	5.5	5.8	6.4	5.9	5.7	5.8	6.5	5.7	5.6	5.5	5.7	5.8	5.8	5.8	5.9	
—*— Hawaii	2.8	2.7	2.7	2.8	2.8	2.9	3.6	2.8	2.9	2.5	2.6	2.4	2.2	1.9	2.2	2.3	2.0	2.3	1.5	2.1	1.9	2.2	
—+— Kauai	2.2																						
—△— Maui	3.5	3.5	3.0	2.7	2.3	3.2	2.9	2.8	2.6	2.4	2.5	2.2	2.3	2.4	2.6								

Calendar Years

Average Length of Stay Psychiatric

**Average Length
of Stay (Days)**



	1983	1984	1985	1986	1987	1988	1989	1990	1991	1992	1993	1994	1995	1996	1997	1998	1999	2000	2001	2002	2003	2004
—□— Honolulu	10.0	11.9	12.3	13.8	11.9	11.8	11.3	11.0	11.0	10.9	9.9	8.6	8.1	7.9	8.1	3.1	6.4	5.9	6.4	6.4	6.7	6.6
—*— Hawaii	7.8	6.3	6.0	7.1	7.8	9.3	7.7	6.2	10.1	8.2	9.9	10.0	8.7	6.8	8.1	8.3	7.1	7.2	7.7	6.4	8.3	7.7
—+— Kauai	6.9	6.4	5.6	7.0	5.9	8.6	10.7	9.7	8.1	10.5	6.8	10.1	10.5	8.8	13.3	12.0	8.5	8.7	9.3	11.8	11.9	11.6
—△— Maui	6.3	7.3	6.8	6.8	6.0	7.2	8.6	8.8	10.4	10.0	11.1	8.7	6.9	7.2	7.6	6.9	6.5	6.7	6.2	6.3	7.7	7.5

Calendar Years