

Table 12. Number of Admissions by County, 1984 - 2004

	1984	1985	1986	1987	1988	1989	1990	1991	1992	1993	1994	1995	1996	1997	1998	1999	2000	2001	2002	2003	2004
LONG TERM CARE																					
<i>Oahu</i>	1373	1522	1526	1528	1615	1630	2040	2175	2280	2400	2269	2552	3251	3612	3797	3789	4119	4272	4692	5147	5260
<i>Hawaii</i>	513	490	468	401	430	469	492	403	409	385	391	448	651	541	904	887	985	942	925	1148	1417
<i>Kauai</i>	247	254	233	312	282	266	328	335	331	352	320	356	348	477	487	605	570	557	460	550	435
<i>Tri-Isle</i>	473	309	337	312	416	288	277	268	235	209	169	221	327	472	601	585	577	492	596	623	769
<i>Maui</i>	446	281	289	283	292	181	212	188	195	136	144	165	228	365	494	434	486	433	488	532	756
<i>Molokai</i>	23	19	48	23	124	89	55	65	40	64	13	44	87	102	102	139	57	14	52	43	7
<i>Lanai</i>	4	9	---	6	---	18	10	15	0	9	12	12	12	5	5	12	34	45	56	48	6
TOTAL ACUTE CARE																					
<i>Oahu</i>	73955	61416	67499	71898	70700	69589	71971	74086	74544	75292	76998	75688	74162	74085	76687	72898	76704	75275	78635	77682	80947
<i>Hawaii</i>	10328	10313	11006	10885	11076	10472	11123	9518	11285	11422	11340	11930	11020	11708	12055	12110	12140	12233	14096	13736	13006
<i>Kauai</i>	4697	4909	5204	5158	5152	4923	4901	4806	4626	4827	4268	4562	4635	5182	5445	5005	5506	5639	6047	6604	6443
<i>Tri-Isle</i>	7550	7835	7995	6677	8373	6702	8879	8551	8518	8749	8451	8821	9113	9370	9608	10092	9923	10460	10576	11033	12670
<i>Maui</i>	7007	7406	7626	6260	8181	6459	8650	8323	8409	8602	8295	8710	8973	9248	9404	9866	9770	10289	10479	10940	12464
<i>Molokai</i>	478	331	369	276	192	139	164	163	93	137	144	98	135	114	171	182	153	171	97	93	175
<i>Lanai</i>	65	98	---	141	---	104	65	65	16	10	12	13	5	8	33	44	0	0	0	0	31
MEDICAL-SURGICAL																					
<i>Oahu</i>	47292	45222	43654	44012	42884	41766	42497	43312	43416	44528	46862	47498	47184	47161	47122	47538	50782	48457	50839	49349	53200
<i>Hawaii</i>	6023	6038	6469	6234	5947	5640	5754	5015	6449	6639	6383	6597	6702	7029	7398	7608	6656	7774	9811	9306	8223
<i>Kauai</i>	2942	3117	3554	3342	3296	3132	3073	2993	3043	3066	3066	2912	2997	3605	4003	3547	3881	3962	4288	4666	4508
<i>Tri-Isle</i>	5009	5386	5433	4396	5751	4509	5824	5666	5544	5658	5608	5867	6033	6254	6889	7227	7104	7696	7927	8114	9796
<i>Maui</i>	4572	5024	5130	4163	5635	4370	5683	5515	5486	5568	5513	5805	5954	6177	6738	7044	7004	7597	7882	8046	9627
<i>Molokai</i>	387	283	303	189	116	45	83	89	42	82	85	49	74	69	118	139	100	99	45	68	138
<i>Lanai</i>	50	79	---	44	---	94	58	62	16	8	10	13	5	8	33	44	0	0	0	0	31

... = Category not applicable. --- = Data not available. Excludes Tripler.

Includes revised 1992 Kapiolani data, revised 1993 Straub data, revised 1994 St. Francis-West Oahu data, revised 1996 Hale Malamalama data and revised 1996

Kaiser data, revised 1997 North Hawaii Community Hospital data, revised 1997 Wahiawa data, revised 1998 Hale Makua (Maui) data, revised 2001 Kauai and Oahu data, revised 2004 Kauai data.

Source: SHPDA, sh04t12.xls

Table 12. Number of Admissions by County, 1984 - 2004 (Continued)

	1984	1985	1986	1987	1988	1989	1990	1991	1992	1993	1994	1995	1996	1997	1998	1999	2000	2001	2002	2003	2004	
CRITICAL CARE																						
<i>Oahu</i>	5686	5878	6085	6544	5791	5506	5925	6665	6764	6867	6485	6078	5496	6132	5748	5270	5440	7064	7089	7732	7267	
<i>Hawaii</i>	1304	1272	1443	1504	1640	1535	1545	1230	1279	1354	1465	1641	1059	1303	1284	1320	2311	1358	990	1165	1411	
<i>Kauai</i>	588	611	563	656	700	656	638	637	580	619	581	626	675	599	475	576	655	554	601	620	625	
<i>Maui</i>	545	563	540	529	553	522	672	620	744	788	720	689	664	618	675	736	560	636	558	749	667	
OBSTETRICS																						
<i>Oahu</i>	13653	12734	11216	13665	14202	14497	15442	15364	15833	15177	14236	12851	12545	11851	11868	11703	11908	11333	11817	11978	12494	
<i>Hawaii</i>	2061	1924	2022	2129	2612	2438	2905	2500	2664	2634	2586	2477	2156	2243	2293	2156	2125	2022	2004	2169	2336	
<i>Kauai</i>	921	891	912	890	967	953	1031	1048	919	986	947	927	891	895	878	754	922	948	1007	1144	1142	
<i>Tri-Isle</i>	1390	1238	1235	1024	1292	1216	1763	1692	1659	1685	1546	1636	1647	1666	1557	1573	1556	1537	1520	1633	1730	
<i>Maui</i>	1288	1173	1169	931	1216	1112	1679	1615	1608	1628	1485	1587	1586	1621	1504	1530	1503	1465	1468	1608	1693	
<i>Molokai</i>	91	48	66	87	76	94	81	74	51	55	59	49	61	45	53	43	53	72	52	25	37	
<i>Lanai</i>	11	17	---	6	---	10	3	3	0	2	2	0	0	0	0	0	0	0	0	0	0	
PEDIATRICS																						
<i>Oahu</i>	4416	4209	3381	4354	4581	4738	4853	5320	5003	4907	4832	4858	4380	4640	4642	4365	4203	4299	4856	4712	4627	
<i>Hawaii</i>	661	633	617	576	493	481	543	469	458	317	369	541	352	351	367	303	288	268	273	247	244	
<i>Kauai</i>
<i>Tri-Isle</i>	399	439	486	412	498	271	420	367	313	340	250	296	271	385	0	0	0	0	0	0	0	
<i>Maui</i>	399	439	486	412	498	271	420	367	313	340	250	296	271	385	0	0	0	0	0	0	0	
<i>Molokai</i>
PSYCHIATRIC																						
<i>Oahu</i>	2556	3565	3851	2760	2855	2666	2816	2979	3100	3406	4155	3958	3972	3727	6770	3522	3873	3620	3514	3413	2897	
<i>Hawaii</i>	434	446	455	442	384	378	376	304	435	478	537	674	751	782	713	723	760	811	1018	849	792	
<i>Kauai</i>	246	290	185	270	189	182	159	128	84	156	85	97	72	83	89	128	143	175	151	174	168	
<i>Maui</i>	207	209	247	235	279	184	196	206	258	278	327	333	498	447	487	556	608	591	571	537	477	

... = Category not applicable. --- = Data not available. Excludes Tripler.

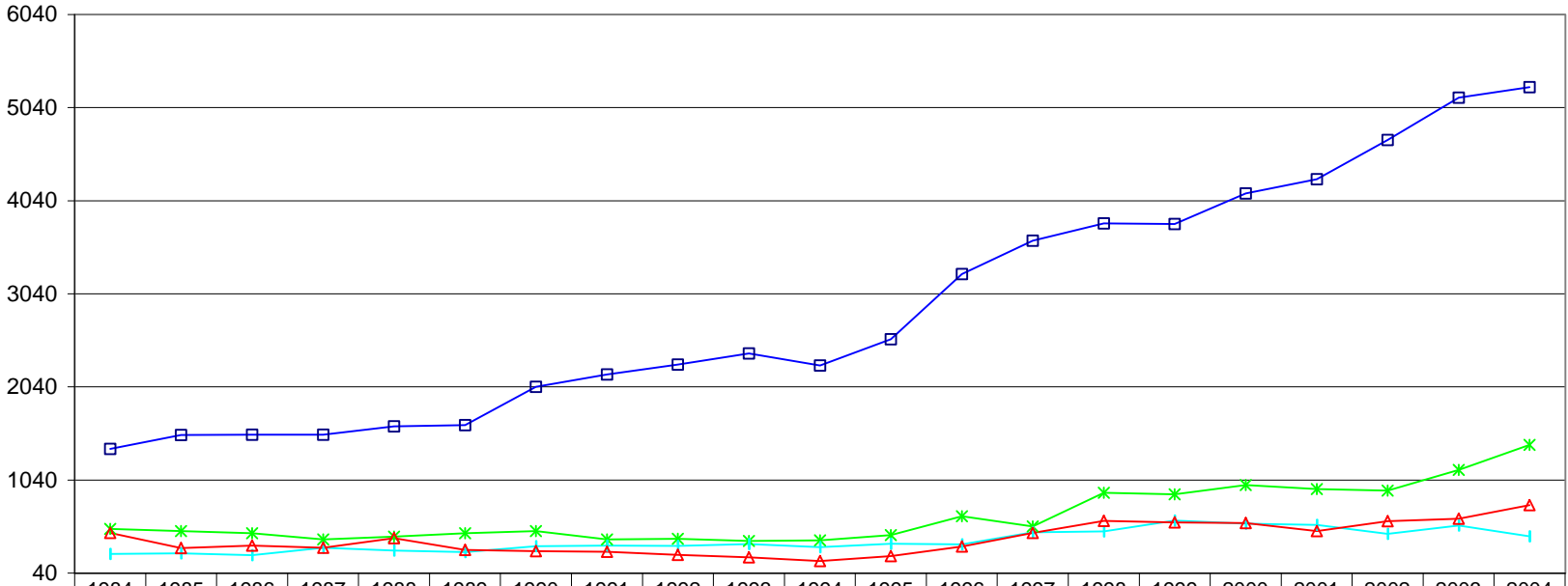
Includes revised 1992 Kapiolani data, revised 1993 Straub data, revised 1994 St. Francis-West Oahu data, revised 1996 Hale Malamalama data and revised 1996

Kaiser data, revised 1997 North Hawaii Community Hospital data, revised 1997 Wahiawa data, revised 1998 Hale Makua (Maui) data, revised 2001 Kauai and Oahu data, revised 2004 Kauai data.

Source: SHPDA, sh04t12.xls

Total Number of Admissions Long Term Care

Total Number of Admissions

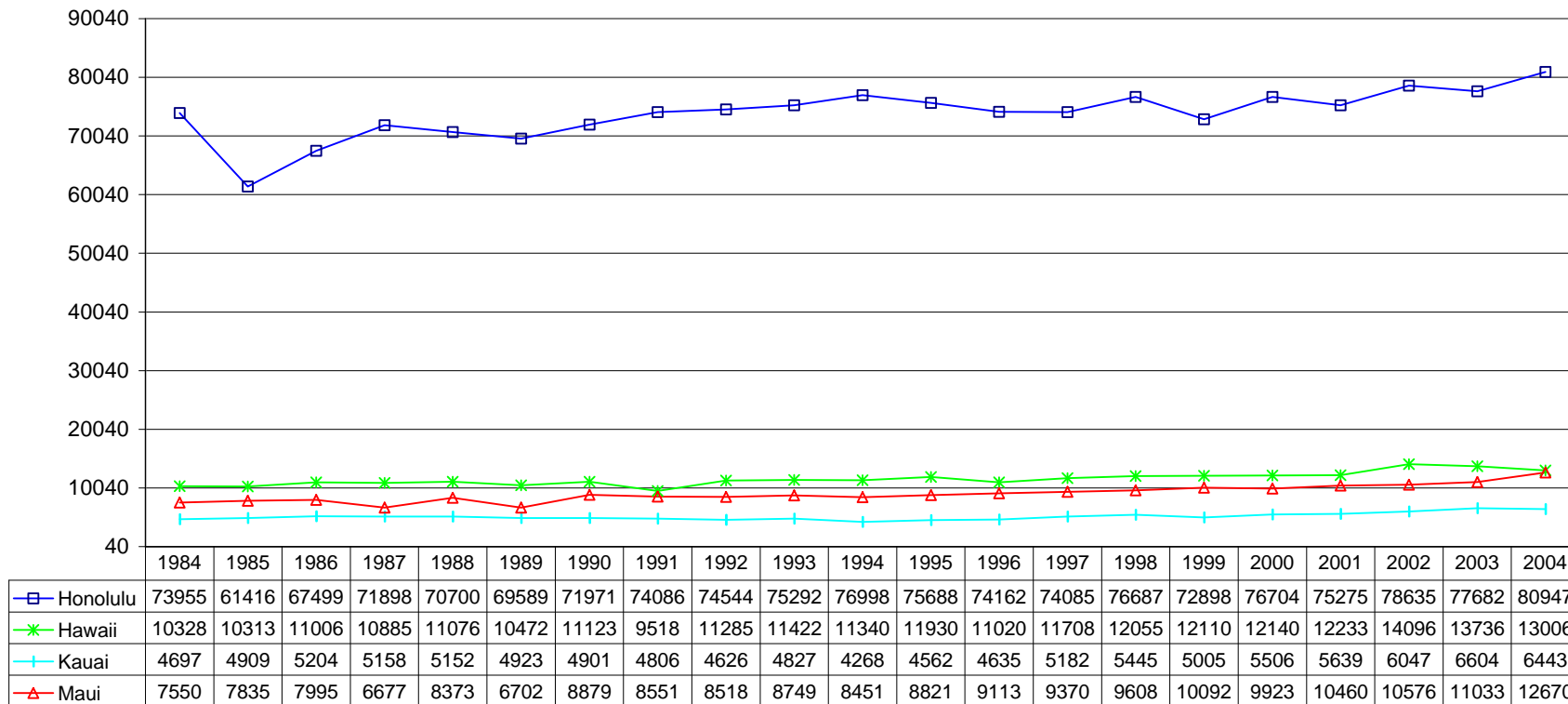


	1984	1985	1986	1987	1988	1989	1990	1991	1992	1993	1994	1995	1996	1997	1998	1999	2000	2001	2002	2003	2004
—■— Honolulu	1373	1522	1526	1528	1615	1630	2040	2175	2280	2400	2269	2552	3251	3612	3797	3789	4119	4272	4692	5147	5260
—*— Hawaii	513	490	468	401	430	469	492	403	409	385	391	448	651	541	904	887	985	942	925	1148	1417
—+— Kauai	247	254	233	312	282	266	328	335	331	352	320	356	348	477	487	605	570	557	460	550	435
—△— Maui	473	309	337	312	416	288	277	268	235	209	169	221	327	472	601	585	577	492	596	623	769

Calendar Year

Total Number of Admissions Total Acute Care

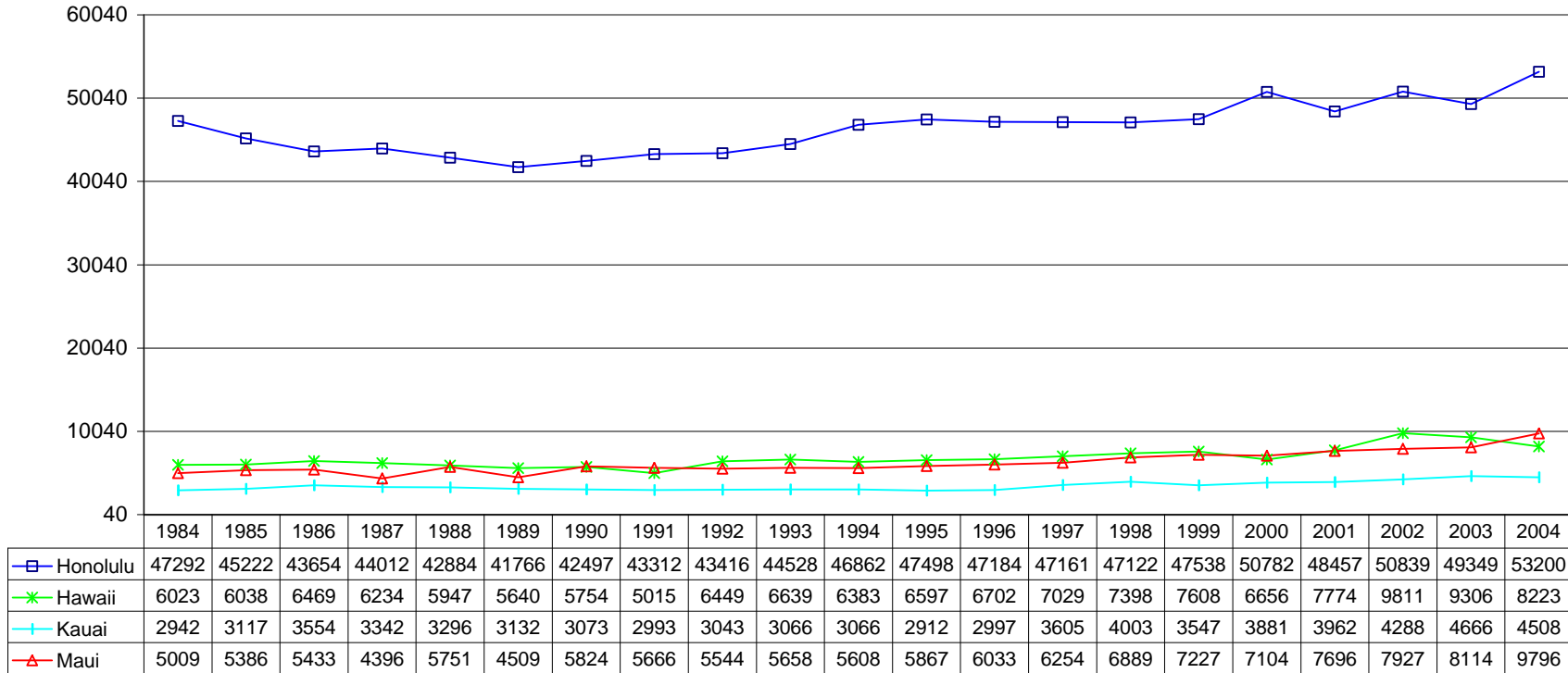
Total Number of Admissions



Calendar Year

Total Number of Admissions Medical-Surgical

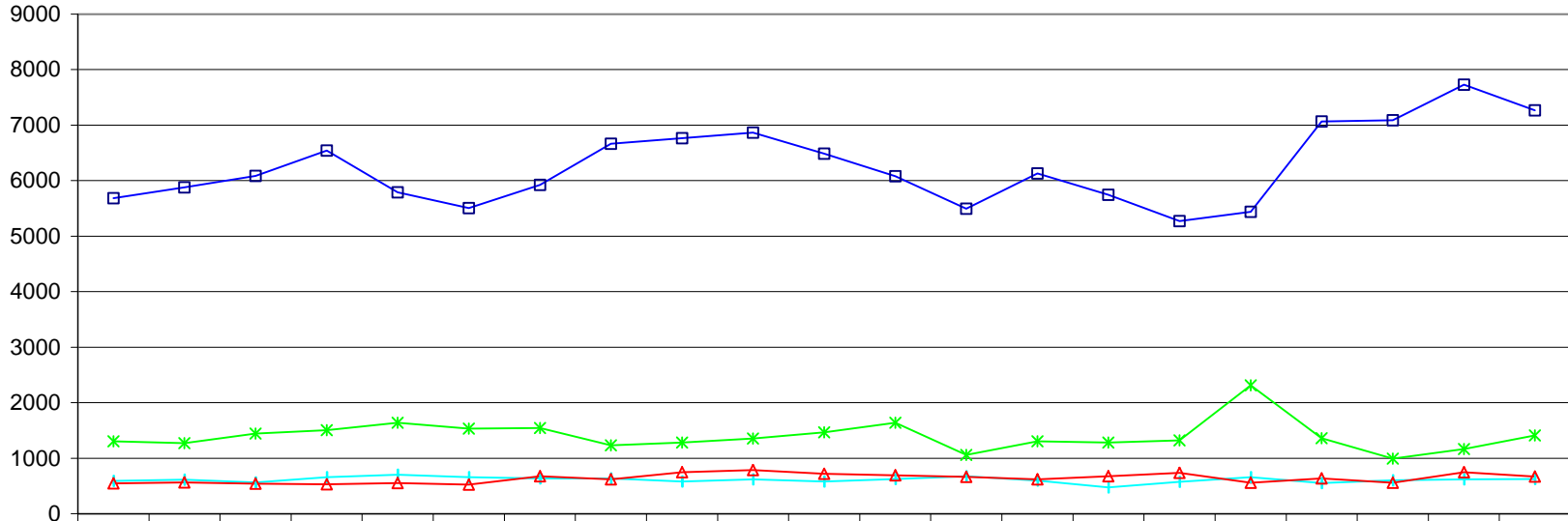
Total Number of Admissions



Calendar Year

Total Number of Admissions Critical Care

**Total Number of
Admissions**

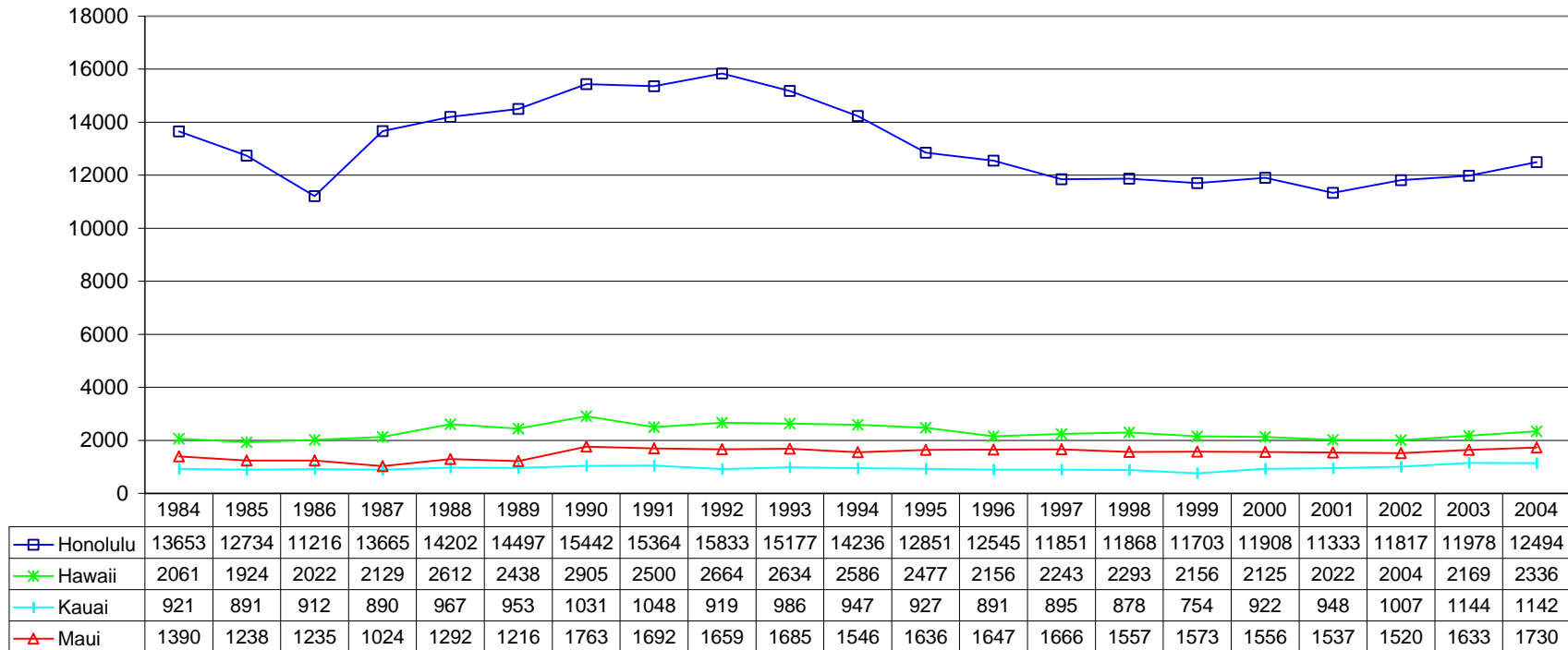


	1984	1985	1986	1987	1988	1989	1990	1991	1992	1993	1994	1995	1996	1997	1998	1999	2000	2001	2002	2003	2004
—■— Honolulu	5686	5878	6085	6544	5791	5506	5925	6665	6764	6867	6485	6078	5496	6132	5748	5270	5440	7064	7089	7732	7267
—*— Hawaii	1304	1272	1443	1504	1640	1535	1545	1230	1279	1354	1465	1641	1059	1303	1284	1320	2311	1358	990	1165	1411
—+— Kauai	588	611	563	656	700	656	638	637	580	619	581	626	675	599	475	576	655	554	601	620	625
—▲— Maui	545	563	540	529	553	522	672	620	744	788	720	689	664	618	675	736	560	636	558	749	667

Calendar Year

Total Number of Admissions Obstetric

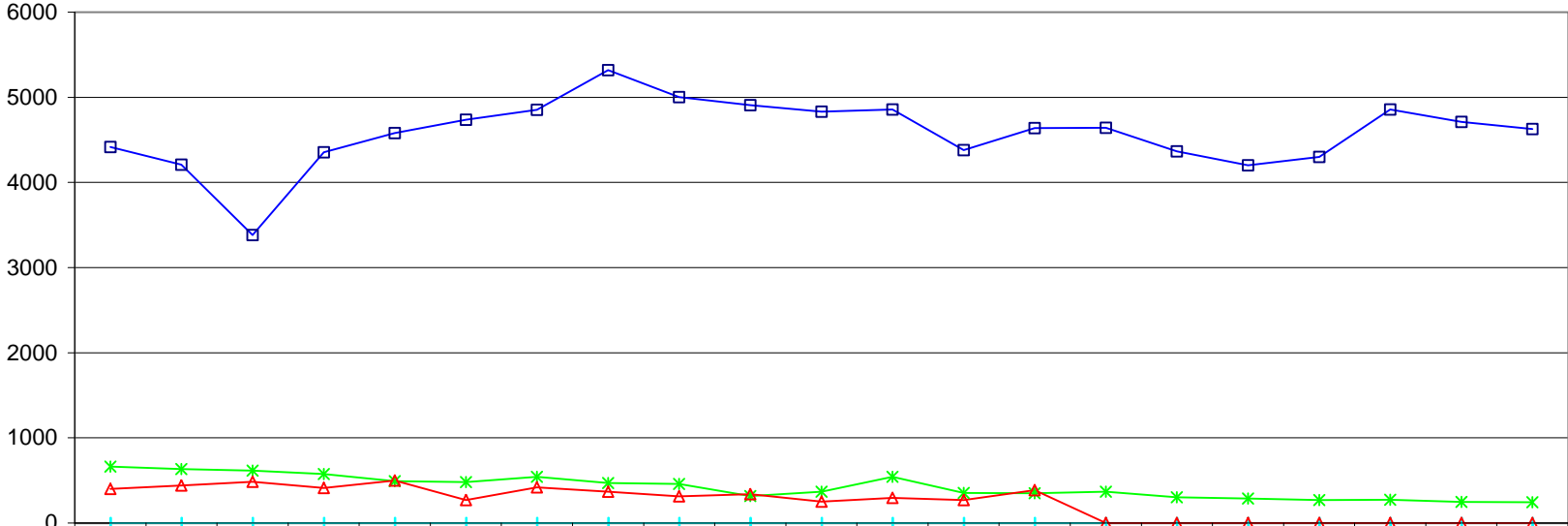
Total Number of
Admissions



Calendar Year

Total Number of Admissions Pediatric

Total Number of Admissions

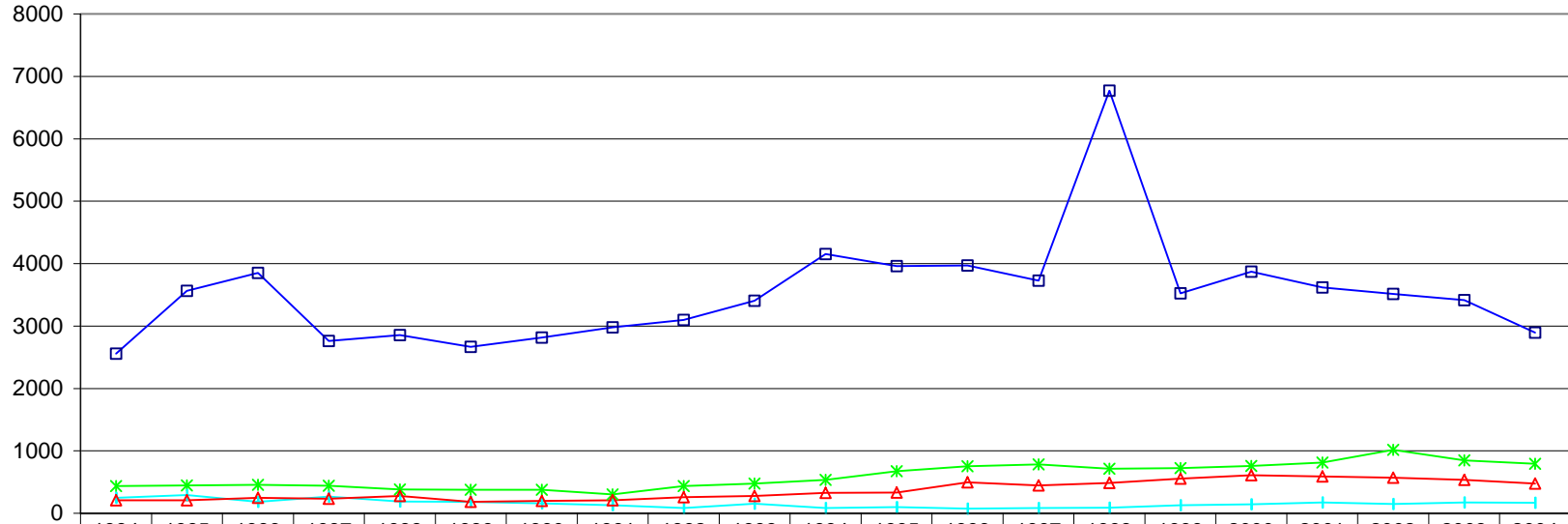


	1984	1985	1986	1987	1988	1989	1990	1991	1992	1993	1994	1995	1996	1997	1998	1999	2000	2001	2002	2003	2004
—□— Honolulu	4416	4209	3381	4354	4581	4738	4853	5320	5003	4907	4832	4858	4380	4640	4642	4365	4203	4299	4856	4712	4627
—*— Hawaii	661	633	617	576	493	481	543	469	458	317	369	541	352	351	367	303	288	268	273	247	244
—+— Kauai	0	0	0	0	0	0	0	0	0	0	0	0	0	0	0	0	0	0	0	0	0
—△— Maui	399	439	486	412	498	271	420	367	313	340	250	296	271	385	0	0	0	0	0	0	0

Calendar Year

Total Number of Admissions Psychiatric

Total Number of Admissions



	1984	1985	1986	1987	1988	1989	1990	1991	1992	1993	1994	1995	1996	1997	1998	1999	2000	2001	2002	2003	2004
—■— Honolulu	2556	3565	3851	2760	2855	2666	2816	2979	3100	3406	4155	3958	3972	3727	6770	3522	3873	3620	3514	3413	2897
—*— Hawaii	434	446	455	442	384	378	376	304	435	478	537	674	751	782	713	723	760	811	1018	849	792
—+— Kauai	246	290	185	270	189	182	159	128	84	156	85	97	72	83	89	128	143	175	151	174	168
—△— Maui	207	209	247	235	279	184	196	206	258	278	327	333	498	447	487	556	608	591	571	537	477

Calendar Year