

Table 14. Occupancy Rates by County, 1986 - 2006

	1986	1987	1988	1989	1990	1991	1992	1993	1994	1995	1996	1997	1998	1999	2000	2001	2002	2003	2004	2005	2006
LONG TERM CARE																					
<i>Oahu</i>	90.5	93.7	91.4	95.0	92.9	91.8	94.6	93.9	95.6	91.4	94.5	92.6	93.3	92.7	90.1	92.2	95.5	93.0	93.5	92.5	94.3
<i>Hawaii</i>	93.8	96.7	92.3	95.1	96.1	98.8	104.3	106.7	108.8	106.8	97.7	95.1	94.0	95.2	92.1	88.2	92.1	94.6	94.8	99.9	97.8
<i>Kauai</i>	83.0	92.1	86.9	94.0	90.2	94.9	96.1	94.6	101.0	96.9	97.7	96.3	96.0	94.1	77.1	87.6	88.2	90.3	90.8	95.7	96.0
<i>Tri-Isle</i>	97.3	95.6	95.3	82.9	92.5	95.6	95.7	95.7	94.4	95.4	73.4	76.7	90.1	90.8	94.2	93.9	93.2	92.9	90.0	94.4	94.3
<i>Maui</i>	97.6	95.7	97.0	83.1	93.2	96.8	97.7	97.4	97.3	97.3	72.9	76.8	91.4	92.1	96.9	95.9	96.2	95.8	92.8	94.6	94.2
<i>Molokai</i>	89.3	90.1	70.1	77.1	87.4	87.7	77.1	72.5	61.1	66.8	76.2	83.3	87.8	70.6	62.4	65.2	41.3	43.3	26.5	86.0	100.0
<i>Lanai</i>	---	100.0	---	84.1	77.2	65.0	62.7	83.5	71.0	94.0	95.1	58.1	60.5	76.6	57.0	70.5	72.1	71.2	94.7	89.3	95.2
TOTAL ACUTE CARE																					
<i>Oahu</i>	67.3	74.4	75.0	74.9	72.0	70.0	72.7	71.9	71.6	69.4	64.7	65.7	62.4	63.7	67.9	66.9	67.3	64.7	65.3	67.7	66.3
<i>Hawaii</i>	53.8	60.7	67.8	65.8	70.2	71.2	57.9	59.0	58.2	61.4	52.9	56.4	58.7	54.0	63.1	69.0	84.5	68.2	65.9	55.1	67.9
<i>Kauai</i>	44.4	51.5	53.4	63.5	52.9	47.5	55.4	56.9	51.4	44.5	45.8	47.0	51.9	47.8	46.7	54.7	57.0	62.2	71.2	62.3	77.3
<i>Tri-Isle</i>	61.5	64.6	69.8	73.3	76.3	82.9	81.0	88.9	90.3	78.3	82.6	71.8	65.8	71.2	71.0	73.8	75.8	76.9	75.6	74.9	77.3
<i>Maui</i>	65.4	70.1	72.6	80.5	82.2	90.9	88.2	96.8	98.3	83.9	87.6	76.1	69.1	74.9	73.4	76.3	78.5	79.8	79.7	79.8	83.5
<i>Molokai</i>	25.0	15.8	18.4	10.6	13.7	14.6	7.5	10.3	13.5	8.3	9.6	9.9	14.1	12.9	11.5	13.1	7.0	5.1	12.8	17.9	14.1
<i>Lanai</i>	---	12.9	---	16.7	11.1	8.3	2.7	0.8	2.4	1.6	1.1	1.0	6.2	3.0	0.0	0.0	0.0	0.0	5.4	3.3	4.9
MEDICAL-SURGICAL																					
<i>Oahu</i>	68.8	73.3	73.1	74.8	69.5	68.1	71.1	70.9	71.4	70.8	63.9	65.6	61.2	63.3	69.1	68.1	67.6	64.9	65.8	68.9	66.0
<i>Hawaii</i>	65.1	74.6	80.3	80.2	87.9	89.1	65.1	64.5	62.6	68.6	57.8	60.6	64.6	60.2	71.9	85.6	111.4	83.7	80.2	64.8	82.0
<i>Kauai</i>	47.6	56.1	55.2	68.8	54.9	50.7	63.4	64.7	57.5	47.2	50.2	51.3	56.8	52.2	47.9	57.8	60.1	64.6	75.1	67.2	86.5
<i>Tri-Isle</i>	67.7	72.4	78.9	85.5	88.3	98.1	94.6	104.5	108.7	89.4	91.0	76.4	76.2	82.0	80.9	82.9	85.3	86.2	86.5	93.9	81.6
<i>Maui</i>	72.3	77.7	80.7	92.1	93.4	106.2	101.2	111.8	116.2	93.4	95.7	80.3	79.6	86.0	82.7	85.2	88.0	89.0	91.6	93.9	90.0
<i>Molokai</i>	25.0	17.7	30.7	13.0	19.9	22.7	10.3	15.6	21.6	12.2	14.1	15.9	23.8	21.7	18.7	18.0	7.2	6.5	17.5	...	9.7
<i>Lanai</i>	---	24.1	---	31.5	16.1	12.1	4.1	1.0	4.4	3.2	1.1	1.0	6.2	3.0	0.0	0.0	0.0	0.0	5.4	...	4.9

... = Category not applicable. --- = Data not available. Excludes Tripler.

Includes revised 1992 Kapiolani data, revised 1993 Straub data, revised 1994 St. Francis-West Oahu data, revised 1996 Hale Malamalama data and revised 1996

Kaiser data, revised 1997 North Hawaii Community Hospital data, revised 1997 Wahiawa data, revised 1998 Hale Makua (Maui) data, revised 2001 Kauai and Oahu data, revised 2004 Kauai data

The 2006 data excludes Kahuku, Kohala, Kula and Maluhia Hospitals.

Source: SHPDA, sh06t14.xls

Table 14. Occupancy Rates by County, 1986 - 2006 (Continued)

	1986	1987	1988	1989	1990	1991	1992	1993	1994	1995	1996	1997	1998	1999	2000	2001	2002	2003	2004	2005	2006
CRITICAL CARE																					
<i>Oahu</i>	63.6	69.4	83.4	86.5	70.7	70.0	71.0	76.2	68.9	67.9	64.9	69.6	71.5	71.8	77.9	68.9	66.6	62.7	61.2	64.6	61.9
<i>Hawaii</i>	50.0	52.9	58.3	69.9	71.0	64.7	43.0	45.0	44.4	41.7	36.6	41.7	42.2	40.6	46.9	46.5	37.3	44.6	53.1	52.5	51.9
<i>Kauai</i>	30.0	35.8	46.0	44.0	38.8	36.0	35.0	36.0	38.7	39.2	43.7	38.5	48.6	41.6	41.2	34.9	36.4	39.0	45.4	40.5	47.2
<i>Maui</i>	27.8	67.1	60.7	66.2	68.5	70.5	74.2	78.7	80.8	84.0	83.1	77.7	51.1	61.7	63.7	70.0	74.0	69.1	60.8	68.3	63.5
OBSTETRICS																					
<i>Oahu</i>	68.4	84.4	81.9	58.4	77.7	67.3	68.0	63.0	57.7	44.8	47.6	45.3	55.8	54.2	51.4	53.8	56.2	60.4	64.3	63.4	63.4
<i>Hawaii</i>	36.8	43.5	50.8	35.9	40.5	41.0	49.6	51.9	56.7	45.9	45.4	42.8	39.0	34.6	38.4	37.7	48.6	41.6	42.4	41.0	44.8
<i>Kauai</i>	37.5	37.7	49.6	50.4	55.7	67.6	40.7	41.1	39.8	40.9	37.8	51.7	55.7	35.9	50.1	57.1	57.0	66.3	79.2	70.7	84.3
<i>Tri-Isle</i>	26.1	26.1	27.3	30.4	35.7	32.5	32.5	28.8	25.4	27.9	29.5	32.7	25.0	26.0	27.4	37.3	37.5	38.9	39.9	38.4	81.2
<i>Maui</i>	33.3	35.2	34.2	36.7	43.9	40.0	40.5	37.3	32.7	34.6	34.9	39.2	28.6	29.8	31.4	41.5	41.6	43.6	44.4	43.0	88.0
<i>Molokai</i>	...	10.2	6.1	8.2	7.4	6.4	4.8	5.1	5.3	4.3	5.0	3.9	4.5	4.1	4.3	4.8	6.5	2.7	5.0	3.7	4.8
<i>Lanai</i>	---	4.9	---	5.8	0.8	1.4	0.0	0.3	1.0	0.0	0.0	0.0	0.0	0.0	0.0	0.0	0.0	0.0	0.0	0.0	0.0
PEDIATRICS																					
<i>Oahu</i>	47.7	58.8	52.5	64.0	90.7	106.2	109.4	104.7	99.5	101.6	102.2	95.5	94.4	87.1	82.6	85.3	101.4	98.1	98.1	96.8	96.4
<i>Hawaii</i>	31.3	27.2	24.5	39.6	34.5	31.0	26.4	18.5	20.0	20.0	13.1	15.3	20.8	15.4	16.4	10.3	14.1	11.8	13.2	9.8	25.0
<i>Kauai</i>
<i>Tri-Isle</i>	80.0	68.5	86.5	57.9	64.9	52.4	41.7	46.6	29.8	36.6	35.1	55.6
<i>Maui</i>	80.0	68.5	86.5	57.9	64.9	52.4	41.7	46.6	29.8	36.6	35.1	55.6
<i>Molokai</i>
PSYCHIATRIC																					
<i>Oahu</i>	75.1	85.5	87.9	78.6	80.8	69.4	71.9	71.5	76.3	67.8	66.2	63.9	44.0	47.6	48.8	48.3	50.5	48.8	44.5	47.3	59.2
<i>Hawaii</i>	32.1	47.4	48.9	39.7	32.2	42.0	48.9	64.6	73.7	80.7	69.6	87.3	81.4	70.4	74.6	55.1	57.6	62.3	53.8	55.0	52.7
<i>Kauai</i>	44.4	48.1	49.4	59.1	46.9	31.6	26.9	32.5	26.2	21.1	19.3	33.5	32.6	33.2	37.9	49.7	54.2	63.2	59.3	64.6	60.1
<i>Maui</i>	50.0	49.4	55.3	57.8	47.3	58.7	70.9	84.3	78.0	62.6	98.4	92.5	50.8	55.2	61.8	55.5	54.8	62.8	54.3	33.3	51.6

... = Category not applicable. --- = Data not available. Excludes Tripler.

Includes revised 1992 Kapiolani data, revised 1993 Straub data, revised 1994 St. Francis-West Oahu data, revised 1996 Hale Malamalama data and revised 1996

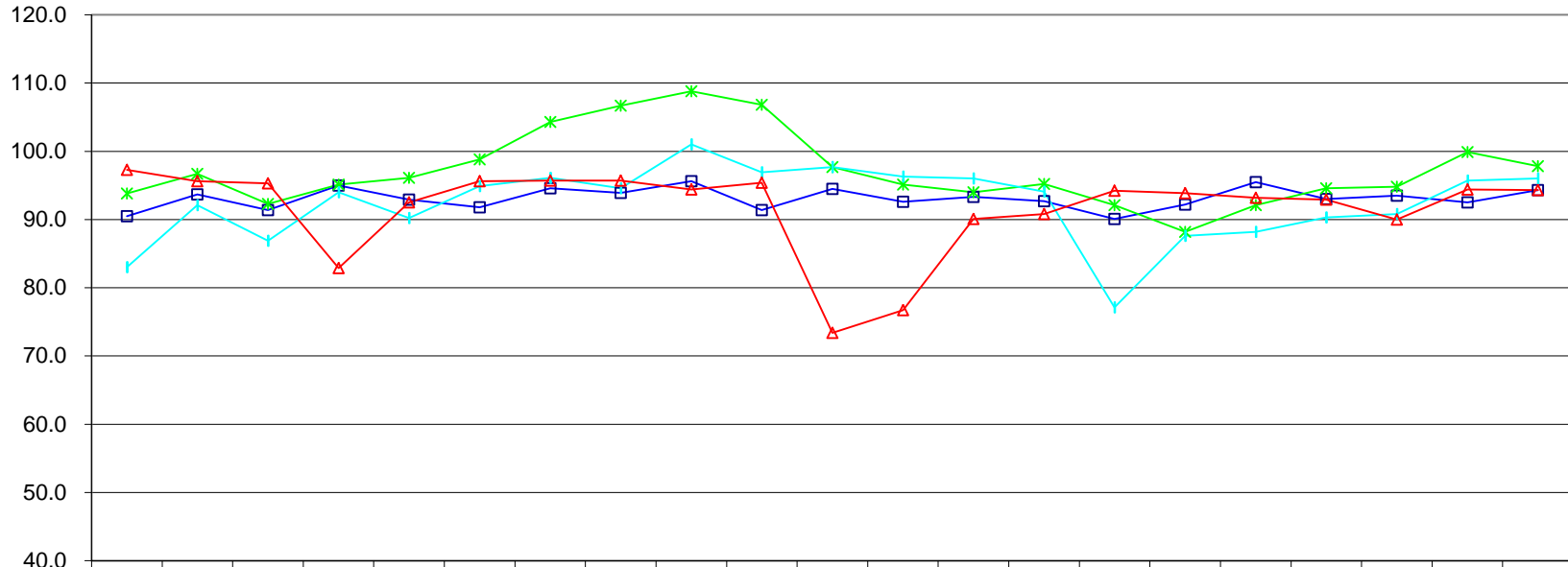
Kaiser data, revised 1997 North Hawaii Community Hospital data, revised 1997 Wahiawa data, revised 1998 Hale Makua (Maui) data, revised 2001 Kauai and Oahu data, revised 2004 Kauai data

The 2006 data excludes Kahuku, Kohala, Kula and Maluhia Hospitals.

Source: SHPDA, sh06t14.xls

Occupancy Rates Long Term Care

Occupancy
Rate (%)

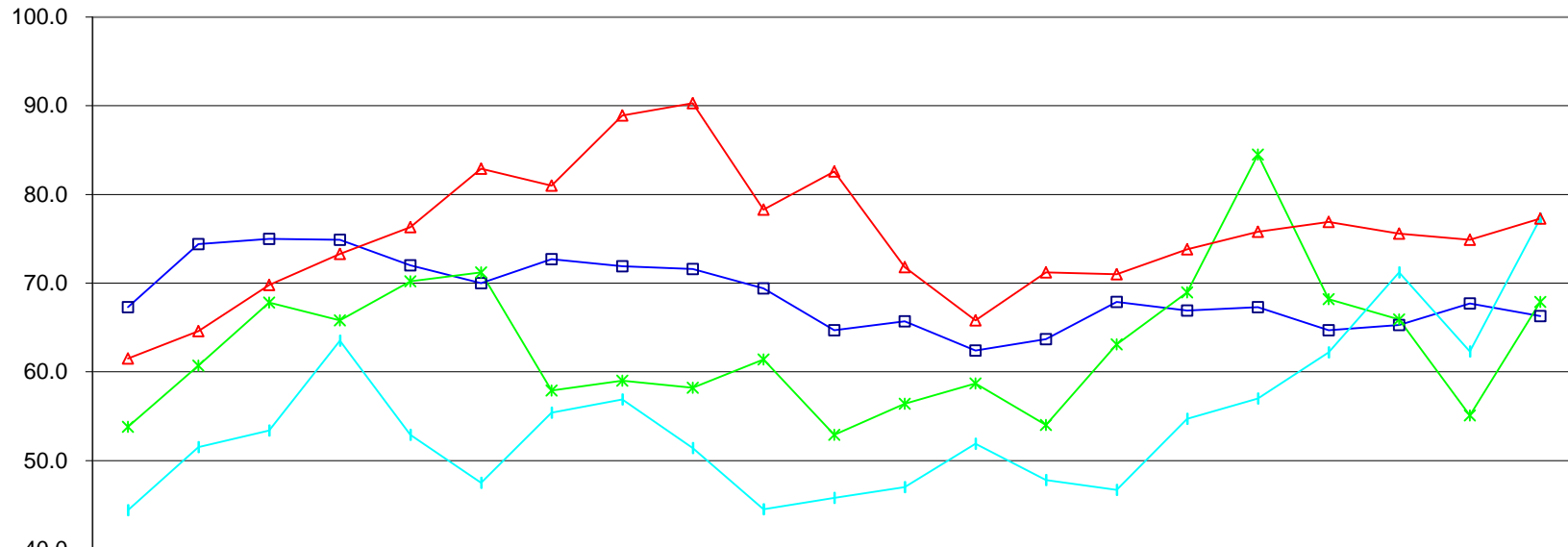


	1986	1987	1988	1989	1990	1991	1992	1993	1994	1995	1996	1997	1998	1999	2000	2001	2002	2003	2004	2005	2006
—■— Honolulu	90.5	93.7	91.4	95.0	92.9	91.8	94.6	93.9	95.6	91.4	94.5	92.6	93.3	92.7	90.1	92.2	95.5	93.0	93.5	92.5	94.3
—*— Hawaii	93.8	96.7	92.3	95.1	96.1	98.8	104.3	106.7	108.8	106.8	97.7	95.1	94.0	95.2	92.1	88.2	92.1	94.6	94.8	99.9	97.8
—+— Kauai	83.0	92.1	86.9	94.0	90.2	94.9	96.1	94.6	101.0	96.9	97.7	96.3	96.0	94.1	77.1	87.6	88.2	90.3	90.8	95.7	96.0
—▲— Maui	97.3	95.6	95.3	82.9	92.5	95.6	95.7	95.7	94.4	95.4	73.4	76.7	90.1	90.8	94.2	93.9	93.2	92.9	90.0	94.4	94.3

Calendar Year

Occupancy Rates Total Acute Care

Occupancy
Rate (%)

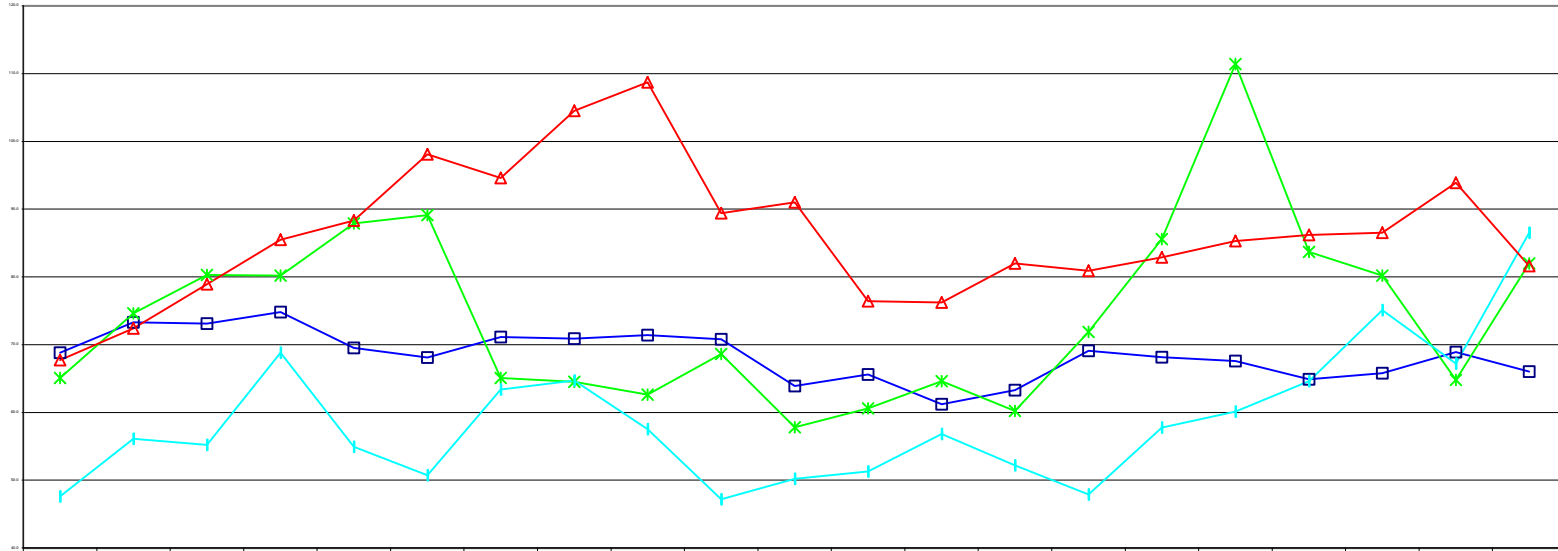


	1986	1987	1988	1989	1990	1991	1992	1993	1994	1995	1996	1997	1998	1999	2000	2001	2002	2003	2004	2005	2006
—□— Honolulu	67.3	74.4	75.0	74.9	72.0	70.0	72.7	71.9	71.6	69.4	64.7	65.7	62.4	63.7	67.9	66.9	67.3	64.7	65.3	67.7	66.3
—*— Hawaii	53.8	60.7	67.8	65.8	70.2	71.2	57.9	59.0	58.2	61.4	52.9	56.4	58.7	54.0	63.1	69.0	84.5	68.2	65.9	55.1	67.9
—+— Kauai	44.4	51.5	53.4	63.5	52.9	47.5	55.4	56.9	51.4	44.5	45.8	47.0	51.9	47.8	46.7	54.7	57.0	62.2	71.2	62.3	77.3
—△— Maui	61.5	64.6	69.8	73.3	76.3	82.9	81.0	88.9	90.3	78.3	82.6	71.8	65.8	71.2	71.0	73.8	75.8	76.9	75.6	74.9	77.3

Calendar Year

Occupancy Rates Medical-Surgical

Occupancy
Rate (%)

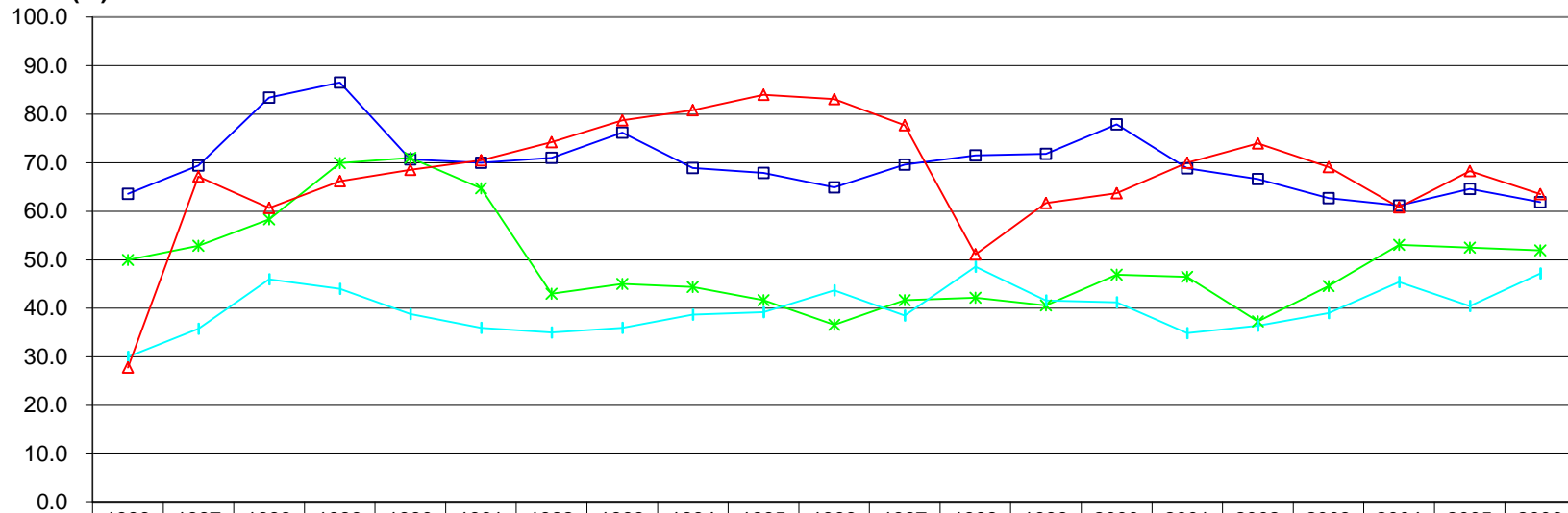


	1986	1987	1988	1989	1990	1991	1992	1993	1994	1995	1996	1997	1998	1999	2000	2001	2002	2003	2004	2005	2006
—■— Honolulu	68.8	73.3	73.1	74.8	69.5	68.1	71.1	70.9	71.4	70.8	63.9	65.6	61.2	63.3	69.1	68.1	67.6	64.9	65.8	68.9	66.0
—*— Hawaii	65.1	74.6	80.3	80.2	87.9	89.1	65.1	64.5	62.6	68.6	57.8	60.6	64.6	60.2	71.9	85.6	111.4	83.7	80.2	64.8	82.0
—+— Kauai	47.6	56.1	55.2	68.8	54.9	50.7	63.4	64.7	57.5	47.2	50.2	51.3	56.8	52.2	47.9	57.8	60.1	64.6	75.1	67.2	86.5
—△— Maui	67.7	72.4	78.9	85.5	88.3	98.1	94.6	104.5	108.7	89.4	91.0	76.4	76.2	82.0	80.9	82.9	85.3	86.2	86.5	93.9	81.6

Calendar Year

Occupancy Rates Critical Care

Occupancy
Rate (%)

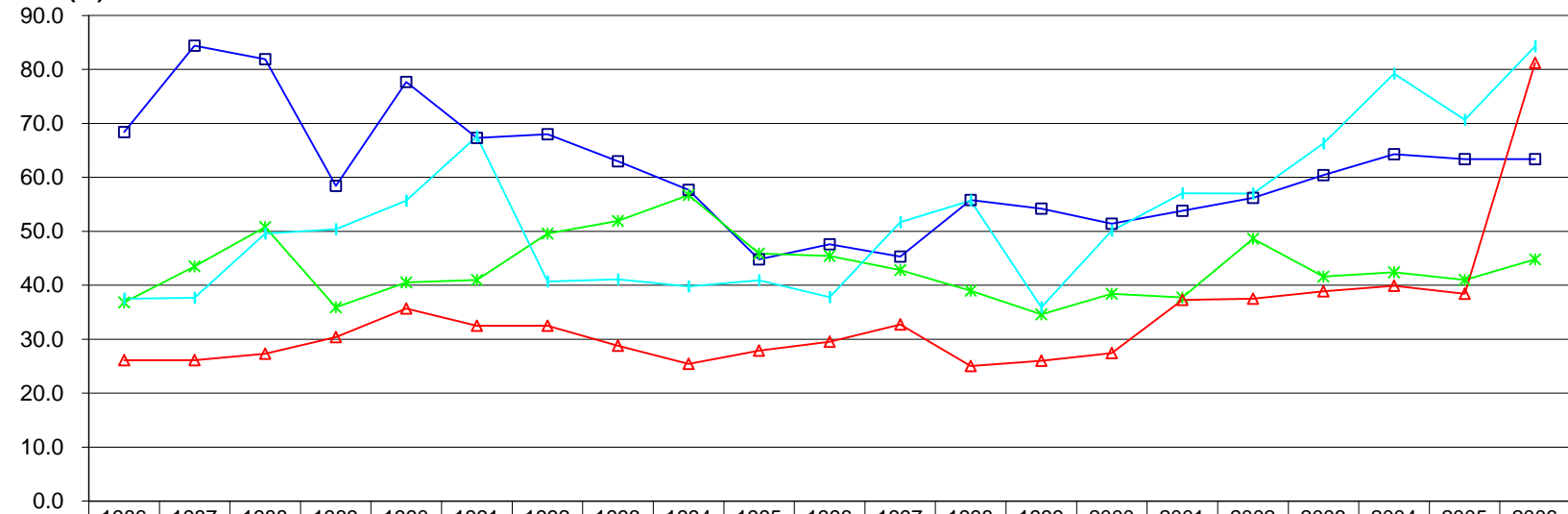


	1986	1987	1988	1989	1990	1991	1992	1993	1994	1995	1996	1997	1998	1999	2000	2001	2002	2003	2004	2005	2006
—□— Honolulu	63.6	69.4	83.4	86.5	70.7	70.0	71.0	76.2	68.9	67.9	64.9	69.6	71.5	71.8	77.9	68.9	66.6	62.7	61.2	64.6	61.9
—*— Hawaii	50.0	52.9	58.3	69.9	71.0	64.7	43.0	45.0	44.4	41.7	36.6	41.7	42.2	40.6	46.9	46.5	37.3	44.6	53.1	52.5	51.9
—+— Kauai	30.0	35.8	46.0	44.0	38.8	36.0	35.0	36.0	38.7	39.2	43.7	38.5	48.6	41.6	41.2	34.9	36.4	39.0	45.4	40.5	47.2
—△— Maui	27.8	67.1	60.7	66.2	68.5	70.5	74.2	78.7	80.8	84.0	83.1	77.7	51.1	61.7	63.7	70.0	74.0	69.1	60.8	68.3	63.5

Calendar Year

Occupancy Rates Obstetric

Occupancy
Rate (%)

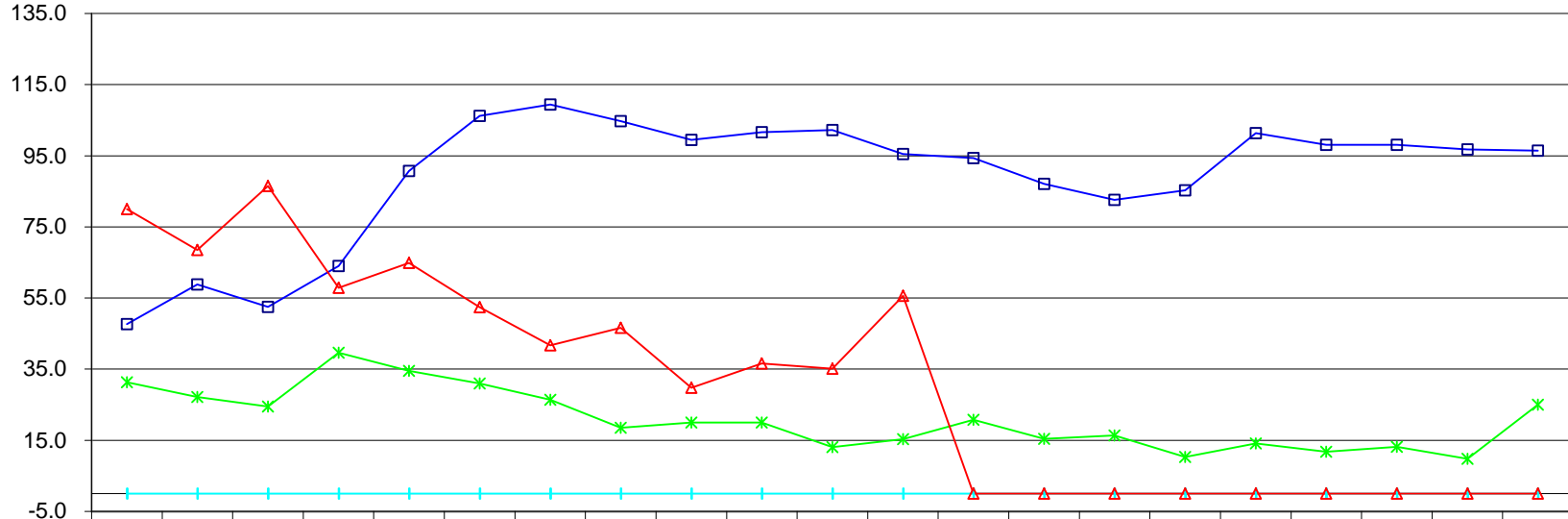


—■— Honolulu	68.4	84.4	81.9	58.4	77.7	67.3	68.0	63.0	57.7	44.8	47.6	45.3	55.8	54.2	51.4	53.8	56.2	60.4	64.3	63.4	63.4
—*— Hawaii	36.8	43.5	50.8	35.9	40.5	41.0	49.6	51.9	56.7	45.9	45.4	42.8	39.0	34.6	38.4	37.7	48.6	41.6	42.4	41.0	44.8
—+— Kauai	37.5	37.7	49.6	50.4	55.7	67.6	40.7	41.1	39.8	40.9	37.8	51.7	55.7	35.9	50.1	57.1	57.0	66.3	79.2	70.7	84.3
—▲— Maui	26.1	26.1	27.3	30.4	35.7	32.5	32.5	28.8	25.4	27.9	29.5	32.7	25.0	26.0	27.4	37.3	37.5	38.9	39.9	38.4	81.2

Calendar Year

Occupancy Rates Pediatric

Occupancy
Rate (%)

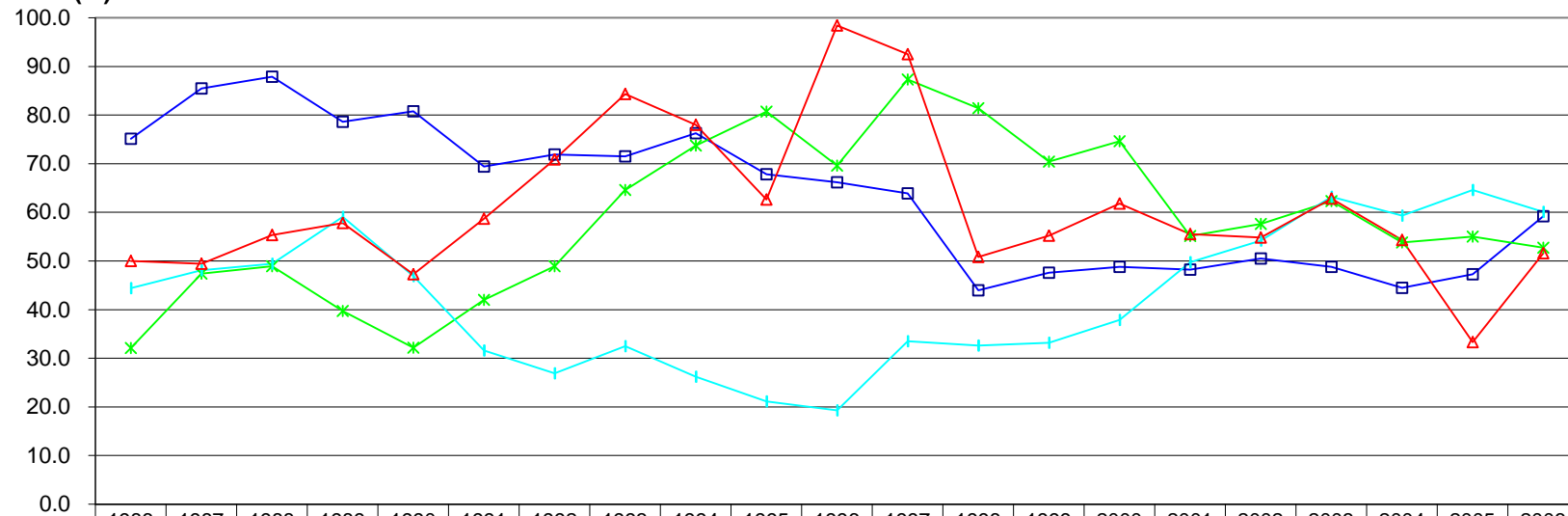


	1986	1987	1988	1989	1990	1991	1992	1993	1994	1995	1996	1997	1998	1999	2000	2001	2002	2003	2004	2005	2006
—□— Honolulu	47.7	58.8	52.5	64.0	90.7	106.2	109.4	104.7	99.5	101.6	102.2	95.5	94.4	87.1	82.6	85.3	101.4	98.1	98.1	96.8	96.4
—*— Hawaii	31.3	27.2	24.5	39.6	34.5	31.0	26.4	18.5	20.0	20.0	13.1	15.3	20.8	15.4	16.4	10.3	14.1	11.8	13.2	9.8	25.0
—+— Kauai	0.0	0.0	0.0	0.0	0.0	0.0	0.0	0.0	0.0	0.0	0.0	0.0	0.0	0.0	0.0	0.0	0.0	0.0	0.0	0.0	0.0
—△— Maui	80.0	68.5	86.5	57.9	64.9	52.4	41.7	46.6	29.8	36.6	35.1	55.6	0.0	0.0	0.0	0.0	0.0	0.0	0.0	0.0	0.0

Calendar Year

Occupancy Rates Psychiatric

**Occupancy
Rate (%)**



	1986	1987	1988	1989	1990	1991	1992	1993	1994	1995	1996	1997	1998	1999	2000	2001	2002	2003	2004	2005	2006
—■— Honolulu	75.1	85.5	87.9	78.6	80.8	69.4	71.9	71.5	76.3	67.8	66.2	63.9	44.0	47.6	48.8	48.3	50.5	48.8	44.5	47.3	59.2
—*— Hawaii	32.1	47.4	48.9	39.7	32.2	42.0	48.9	64.6	73.7	80.7	69.6	87.3	81.4	70.4	74.6	55.1	57.6	62.3	53.8	55.0	52.7
—+— Kauai	44.4	48.1	49.4	59.1	46.9	31.6	26.9	32.5	26.2	21.1	19.3	33.5	32.6	33.2	37.9	49.7	54.2	63.2	59.3	64.6	60.1
—▲— Maui	50.0	49.4	55.3	57.8	47.3	58.7	70.9	84.3	78.0	62.6	98.4	92.5	50.8	55.2	61.8	55.5	54.8	62.8	54.3	33.3	51.6

Calendar Year