

Table 14. Occupancy Rates by County, 1985 - 2005

	1985	1986	1987	1988	1989	1990	1991	1992	1993	1994	1995	1996	1997	1998	1999	2000	2001	2002	2003	2004	2005
LONG TERM CARE																					
<i>Oahu</i>	97.2	90.5	93.7	91.4	95.0	92.9	91.8	94.6	93.9	95.6	91.4	94.5	92.6	93.3	92.7	90.1	92.2	95.5	93.0	93.5	92.5
<i>Hawaii</i>	95.3	93.8	96.7	92.3	95.1	96.1	98.8	104.3	106.7	108.8	106.8	97.7	95.1	94.0	95.2	92.1	88.2	92.1	94.6	94.8	99.9
<i>Kauai</i>	91.1	83.0	92.1	86.9	94.0	90.2	94.9	96.1	94.6	101.0	96.9	97.7	96.3	96.0	94.1	77.1	87.6	88.2	90.3	90.8	95.7
<i>Tri-Isle</i>	97.0	97.3	95.6	95.3	82.9	92.5	95.6	95.7	95.7	94.4	95.4	73.4	76.7	90.1	90.8	94.2	93.9	93.2	92.9	90.0	94.4
<i>Maui</i>	97.0	97.6	95.7	97.0	83.1	93.2	96.8	97.7	97.4	97.3	97.3	72.9	76.8	91.4	92.1	96.9	95.9	96.2	95.8	92.8	94.6
<i>Molokai</i>	96.8	89.3	90.1	70.1	77.1	87.4	87.7	77.1	72.5	61.1	66.8	76.2	83.3	87.8	70.6	62.4	65.2	41.3	43.3	26.5	86.0
<i>Lanai</i>	84.9	---	100.0	---	84.1	77.2	65.0	62.7	83.5	71.0	94.0	95.1	58.1	60.5	76.6	57.0	70.5	72.1	71.2	94.7	89.3
TOTAL ACUTE CARE																					
<i>Oahu</i>	67.7	67.3	74.4	75.0	74.9	72.0	70.0	72.7	71.9	71.6	69.4	64.7	65.7	62.4	63.7	67.9	66.9	67.3	64.7	65.3	67.7
<i>Hawaii</i>	48.3	53.8	60.7	67.8	65.8	70.2	71.2	57.9	59.0	58.2	61.4	52.9	56.4	58.7	54.0	63.1	69.0	84.5	68.2	65.9	55.1
<i>Kauai</i>	50.0	44.4	51.5	53.4	63.5	52.9	47.5	55.4	56.9	51.4	44.5	45.8	47.0	51.9	47.8	46.7	54.7	57.0	62.2	71.2	62.3
<i>Tri-Isle</i>	57.8	61.5	64.6	69.8	73.3	76.3	82.9	81.0	88.9	90.3	78.3	82.6	71.8	65.8	71.2	71.0	73.8	75.8	76.9	75.6	74.9
<i>Maui</i>	62.6	65.4	70.1	72.6	80.5	82.2	90.9	88.2	96.8	98.3	83.9	87.6	76.1	69.1	74.9	73.4	76.3	78.5	79.8	79.7	79.8
<i>Molokai</i>	17.3	25.0	15.8	18.4	10.6	13.7	14.6	7.5	10.3	13.5	8.3	9.6	9.9	14.1	12.9	11.5	13.1	7.0	5.1	12.8	17.9
<i>Lanai</i>	12.9	---	12.9	---	16.7	11.1	8.3	2.7	0.8	2.4	1.6	1.1	1.0	6.2	3.0	0.0	0.0	0.0	0.0	5.4	3.3
MEDICAL-SURGICAL																					
<i>Oahu</i>	68.2	68.8	73.3	73.1	74.8	69.5	68.1	71.1	70.9	71.4	70.8	63.9	65.6	61.2	63.3	69.1	68.1	67.6	64.9	65.8	68.9
<i>Hawaii</i>	62.3	65.1	74.6	80.3	80.2	87.9	89.1	65.1	64.5	62.6	68.6	57.8	60.6	64.6	60.2	71.9	85.6	111.4	83.7	80.2	64.8
<i>Kauai</i>	54.5	47.6	56.1	55.2	68.8	54.9	50.7	63.4	64.7	57.5	47.2	50.2	51.3	56.8	52.2	47.9	57.8	60.1	64.6	75.1	67.2
<i>Tri-Isle</i>	65.0	67.7	72.4	78.9	85.5	88.3	98.1	94.6	104.5	108.7	89.4	91.0	76.4	76.2	82.0	80.9	82.9	85.3	86.2	86.5	93.9
<i>Maui</i>	70.5	72.3	77.7	80.7	92.1	93.4	106.2	101.2	111.8	116.2	93.4	95.7	80.3	79.6	86.0	82.7	85.2	88.0	89.0	91.6	93.9
<i>Molokai</i>	21.5	25.0	17.7	30.7	13.0	19.9	22.7	10.3	15.6	21.6	12.2	14.1	15.9	23.8	21.7	18.7	18.0	7.2	6.5	17.5	...
<i>Lanai</i>	22.2	---	24.1	---	31.5	16.1	12.1	4.1	1.0	4.4	3.2	1.1	1.0	6.2	3.0	0.0	0.0	0.0	0.0	5.4	...

... = Category not applicable. --- = Data not available. Excludes Tripler.

Includes revised 1992 Kapiolani data, revised 1993 Straub data, revised 1994 St. Francis-West Oahu data, revised 1996 Hale Malamalama data and revised 1996

Kaiser data, revised 1997 North Hawaii Community Hospital data, revised 1997 Wahiawa data, revised 1998 Hale Makua (Maui) data, revised 2001 Kauai and Oahu data, revised 2004 Kauai data.

Source: SHPDA, sh05t14.xls

Table 14. Occupancy Rates by County, 1985 - 2005 (Continued)

	1985	1986	1987	1988	1989	1990	1991	1992	1993	1994	1995	1996	1997	1998	1999	2000	2001	2002	2003	2004	2005
CRITICAL CARE																					
<i>Oahu</i>	61.1	63.6	69.4	83.4	86.5	70.7	70.0	71.0	76.2	68.9	67.9	64.9	69.6	71.5	71.8	77.9	68.9	66.6	62.7	61.2	64.6
<i>Hawaii</i>	41.3	50.0	52.9	58.3	69.9	71.0	64.7	43.0	45.0	44.4	41.7	36.6	41.7	42.2	40.6	46.9	46.5	37.3	44.6	53.1	52.5
<i>Kauai</i>	33.4	30.0	35.8	46.0	44.0	38.8	36.0	35.0	36.0	38.7	39.2	43.7	38.5	48.6	41.6	41.2	34.9	36.4	39.0	45.4	40.5
<i>Maui</i>	52.9	27.8	67.1	60.7	66.2	68.5	70.5	74.2	78.7	80.8	84.0	83.1	77.7	51.1	61.7	63.7	70.0	74.0	69.1	60.8	68.3
OBSTETRICS																					
<i>Oahu</i>	75.2	68.4	84.4	81.9	58.4	77.7	67.3	68.0	63.0	57.7	44.8	47.6	45.3	55.8	54.2	51.4	53.8	56.2	60.4	64.3	63.4
<i>Hawaii</i>	35.3	36.8	43.5	50.8	35.9	40.5	41.0	49.6	51.9	56.7	45.9	45.4	42.8	39.0	34.6	38.4	37.7	48.6	41.6	42.4	41.0
<i>Kauai</i>	37.9	37.5	37.7	49.6	50.4	55.7	67.6	40.7	41.1	39.8	40.9	37.8	51.7	55.7	35.9	50.1	57.1	57.0	66.3	79.2	70.7
<i>Tri-Isle</i>	27.6	26.1	26.1	27.3	30.4	35.7	32.5	32.5	28.8	25.4	27.9	29.5	32.7	25.0	26.0	27.4	37.3	37.5	38.9	39.9	38.4
<i>Maui</i>	33.6	33.3	35.2	34.2	36.7	43.9	40.0	40.5	37.3	32.7	34.6	34.9	39.2	28.6	29.8	31.4	41.5	41.6	43.6	44.4	43.0
<i>Molokai</i>	4.7	...	10.2	6.1	8.2	7.4	6.4	4.8	5.1	5.3	4.3	5.0	3.9	4.5	4.1	4.3	4.8	6.5	2.7	5.0	3.7
<i>Lanai</i>	9.9	---	4.9	---	5.8	0.8	1.4	0.0	0.3	1.0	0.0	0.0	0.0	0.0	0.0	0.0	0.0	0.0	0.0	0.0	0.0
PEDIATRICS																					
<i>Oahu</i>	52.4	47.7	58.8	52.5	64.0	90.7	106.2	109.4	104.7	99.5	101.6	102.2	95.5	94.4	87.1	82.6	85.3	101.4	98.1	98.1	96.8
<i>Hawaii</i>	14.4	31.3	27.2	24.5	39.6	34.5	31.0	26.4	18.5	20.0	20.0	13.1	15.3	20.8	15.4	16.4	10.3	14.1	11.8	13.2	9.8
<i>Kauai</i>
<i>Tri-Isle</i>	70.7	80.0	68.5	86.5	57.9	64.9	52.4	41.7	46.6	29.8	36.6	35.1	55.6
<i>Maui</i>	70.7	80.0	68.5	86.5	57.9	64.9	52.4	41.7	46.6	29.8	36.6	35.1	55.6
<i>Molokai</i>
PSYCHIATRIC																					
<i>Oahu</i>	62.1	75.1	85.5	87.9	78.6	80.8	69.4	71.9	71.5	76.3	67.8	66.2	63.9	44.0	47.6	48.8	48.3	50.5	48.8	44.5	47.3
<i>Hawaii</i>	35.0	32.1	47.4	48.9	39.7	32.2	42.0	48.9	64.6	73.7	80.7	69.6	87.3	81.4	70.4	74.6	55.1	57.6	62.3	53.8	55.0
<i>Kauai</i>	49.2	44.4	48.1	49.4	59.1	46.9	31.6	26.9	32.5	26.2	21.1	19.3	33.5	32.6	33.2	37.9	49.7	54.2	63.2	59.3	64.6
<i>Maui</i>	39.1	50.0	49.4	55.3	57.8	47.3	58.7	70.9	84.3	78.0	62.6	98.4	92.5	50.8	55.2	61.8	55.5	54.8	62.8	54.3	33.3

... = Category not applicable. --- = Data not available. Excludes Tripler.

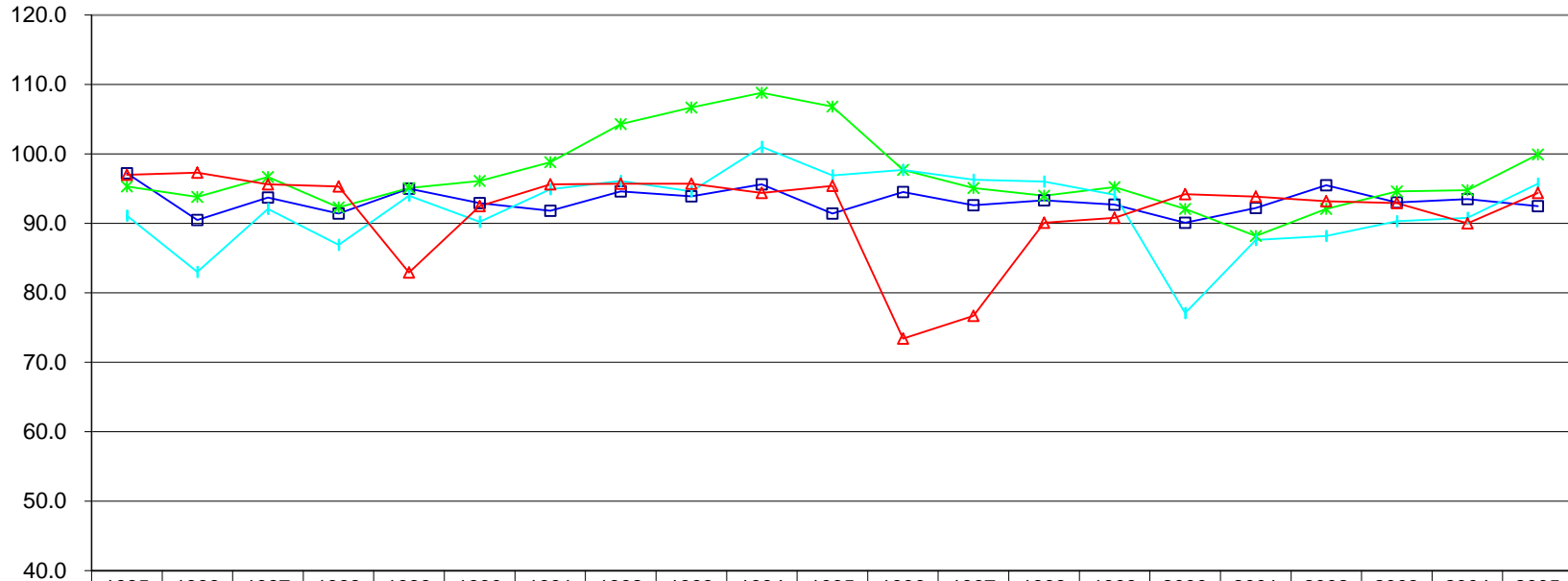
Includes revised 1992 Kapiolani data, revised 1993 Straub data, revised 1994 St. Francis-West Oahu data, revised 1996 Hale Malamalama data and revised 1996

Kaiser data, revised 1997 North Hawaii Community Hospital data, revised 1997 Wahiawa data, revised 1998 Hale Makua (Maui) data, revised 2001 Kauai and Oahu data, revised 2004 Kauai data.

Source: SHPDA, sh05t14.xls

Occupancy Rates Long Term Care

Occupancy
Rate (%)

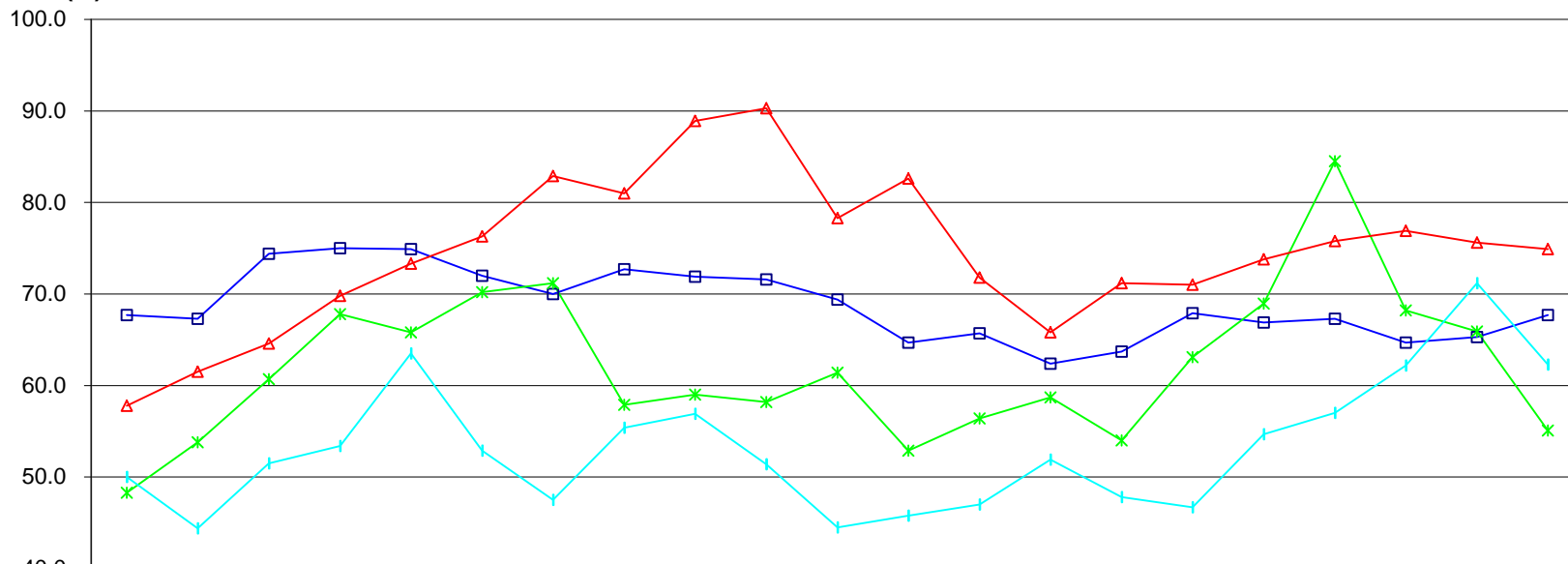


	1985	1986	1987	1988	1989	1990	1991	1992	1993	1994	1995	1996	1997	1998	1999	2000	2001	2002	2003	2004	2005
—■— Honolulu	97.2	90.5	93.7	91.4	95.0	92.9	91.8	94.6	93.9	95.6	91.4	94.5	92.6	93.3	92.7	90.1	92.2	95.5	93.0	93.5	92.5
—*— Hawaii	95.3	93.8	96.7	92.3	95.1	96.1	98.8	104.3	106.7	108.8	106.8	97.7	95.1	94.0	95.2	92.1	88.2	92.1	94.6	94.8	99.9
—+— Kauai	91.1	83.0	92.1	86.9	94.0	90.2	94.9	96.1	94.6	101.0	96.9	97.7	96.3	96.0	94.1	77.1	87.6	88.2	90.3	90.8	95.7
—▲— Maui	97.0	97.3	95.6	95.3	82.9	92.5	95.6	95.7	95.7	94.4	95.4	73.4	76.7	90.1	90.8	94.2	93.9	93.2	92.9	90.0	94.4

Calendar Year

Occupancy Rates Total Acute Care

Occupancy
Rate (%)

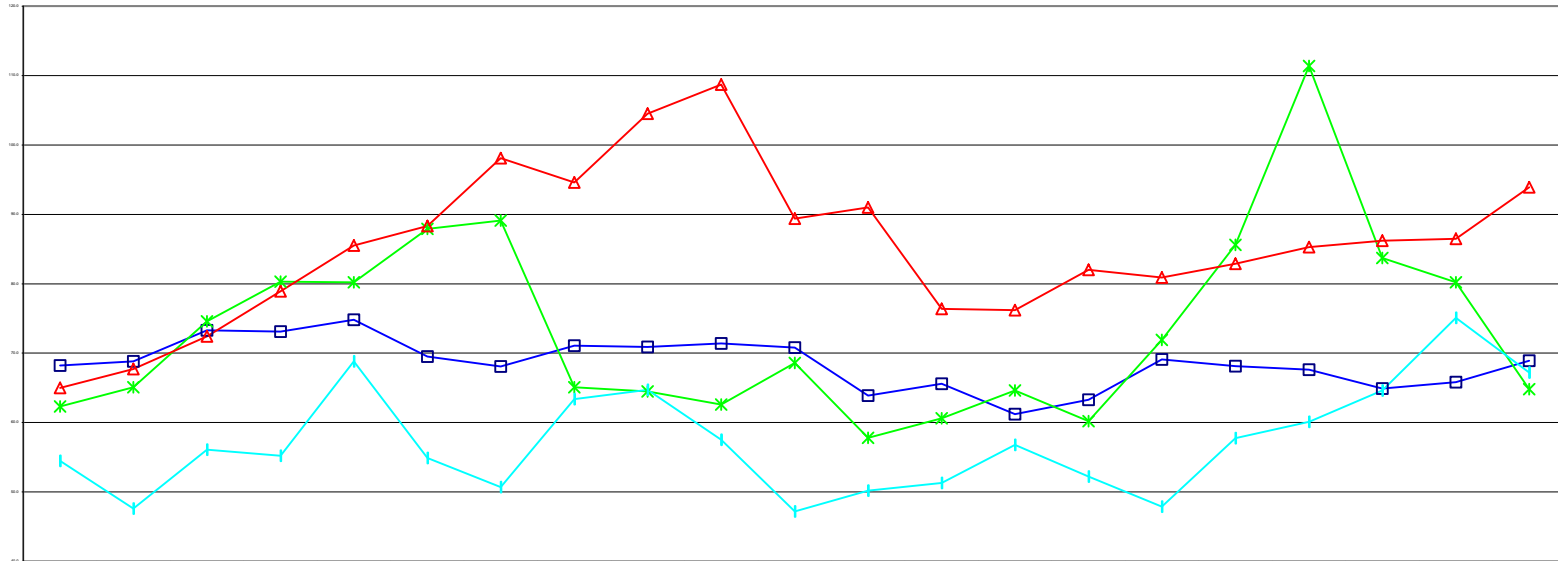


	1985	1986	1987	1988	1989	1990	1991	1992	1993	1994	1995	1996	1997	1998	1999	2000	2001	2002	2003	2004	2005
Honolulu	67.7	67.3	74.4	75.0	74.9	72.0	70.0	72.7	71.9	71.6	69.4	64.7	65.7	62.4	63.7	67.9	66.9	67.3	64.7	65.3	67.7
Hawaii	48.3	53.8	60.7	67.8	65.8	70.2	71.2	57.9	59.0	58.2	61.4	52.9	56.4	58.7	54.0	63.1	69.0	84.5	68.2	65.9	55.1
Kauai	50.0	44.4	51.5	53.4	63.5	52.9	47.5	55.4	56.9	51.4	44.5	45.8	47.0	51.9	47.8	46.7	54.7	57.0	62.2	71.2	62.3
Maui	57.8	61.5	64.6	69.8	73.3	76.3	82.9	81.0	88.9	90.3	78.3	82.6	71.8	65.8	71.2	71.0	73.8	75.8	76.9	75.6	74.9

Calendar Year

Occupancy Rates Medical-Surgical

Occupancy
Rate (%)

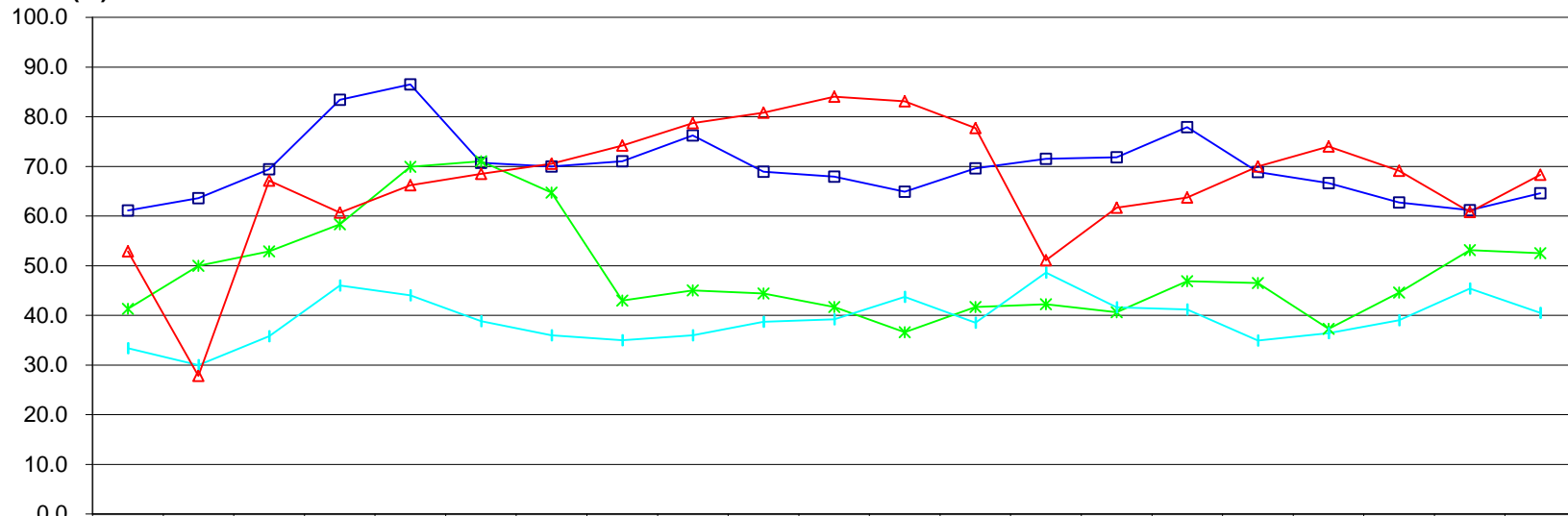


	1985	1986	1987	1988	1989	1990	1991	1992	1993	1994	1995	1996	1997	1998	1999	2000	2001	2002	2003	2004	2005
—■— Honolulu	68.2	68.8	73.3	73.1	74.8	69.5	68.1	71.1	70.9	71.4	70.8	63.9	65.6	61.2	63.3	69.1	68.1	67.6	64.9	65.8	68.9
—*— Hawaii	62.3	65.1	74.6	80.3	80.2	87.9	89.1	65.1	64.5	62.6	68.6	57.8	60.6	64.6	60.2	71.9	85.6	111.4	83.7	80.2	64.8
—▲— Kauai	54.5	47.6	56.1	55.2	68.8	54.9	50.7	63.4	64.7	57.5	47.2	50.2	51.3	56.8	52.2	47.9	57.8	60.1	64.6	75.1	67.2
—▲— Maui	65.0	67.7	72.4	78.9	85.5	88.3	98.1	94.6	104.5	108.7	89.4	91.0	76.4	76.2	82.0	80.9	82.9	85.3	86.2	86.5	93.9

Calendar Year

Occupancy Rates Critical Care

Occupancy
Rate (%)

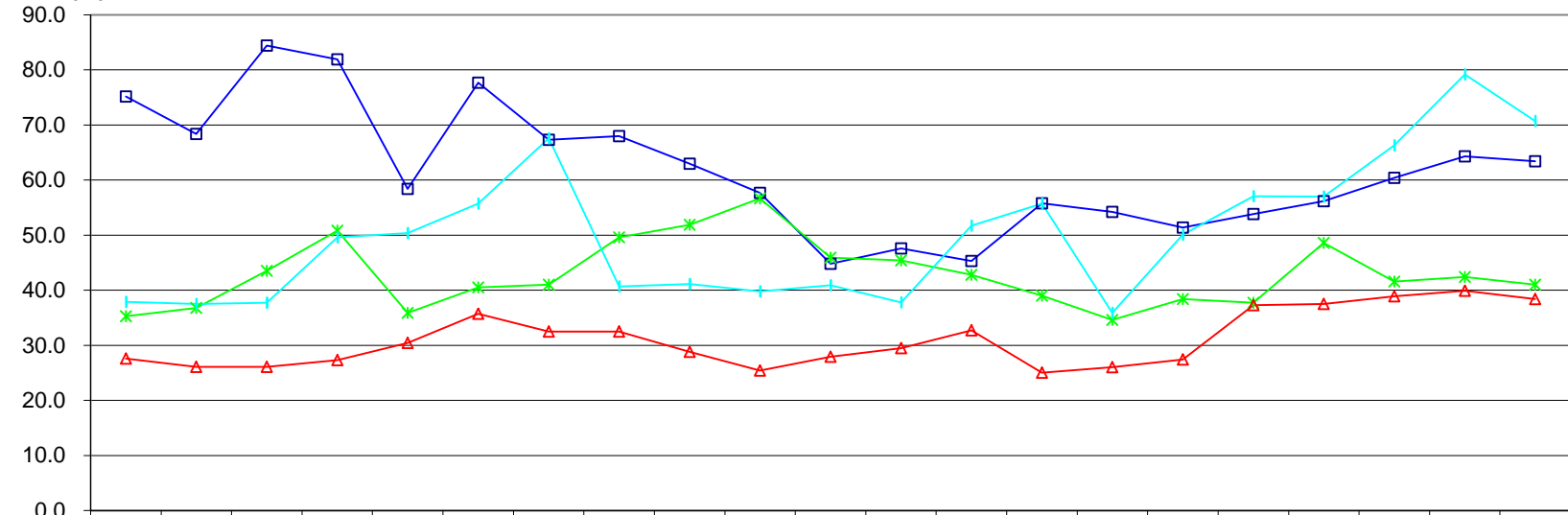


	1985	1986	1987	1988	1989	1990	1991	1992	1993	1994	1995	1996	1997	1998	1999	2000	2001	2002	2003	2004	2005
—■— Honolulu	61.1	63.6	69.4	83.4	86.5	70.7	70.0	71.0	76.2	68.9	67.9	64.9	69.6	71.5	71.8	77.9	68.9	66.6	62.7	61.2	64.6
—*— Hawaii	41.3	50.0	52.9	58.3	69.9	71.0	64.7	43.0	45.0	44.4	41.7	36.6	41.7	42.2	40.6	46.9	46.5	37.3	44.6	53.1	52.5
—+— Kauai	33.4	30.0	35.8	46.0	44.0	38.8	36.0	35.0	36.0	38.7	39.2	43.7	38.5	48.6	41.6	41.2	34.9	36.4	39.0	45.4	40.5
—▲— Maui	52.9	27.8	67.1	60.7	66.2	68.5	70.5	74.2	78.7	80.8	84.0	83.1	77.7	51.1	61.7	63.7	70.0	74.0	69.1	60.8	68.3

Calendar Year

Occupancy Rates Obstetric

Occupancy
Rate (%)

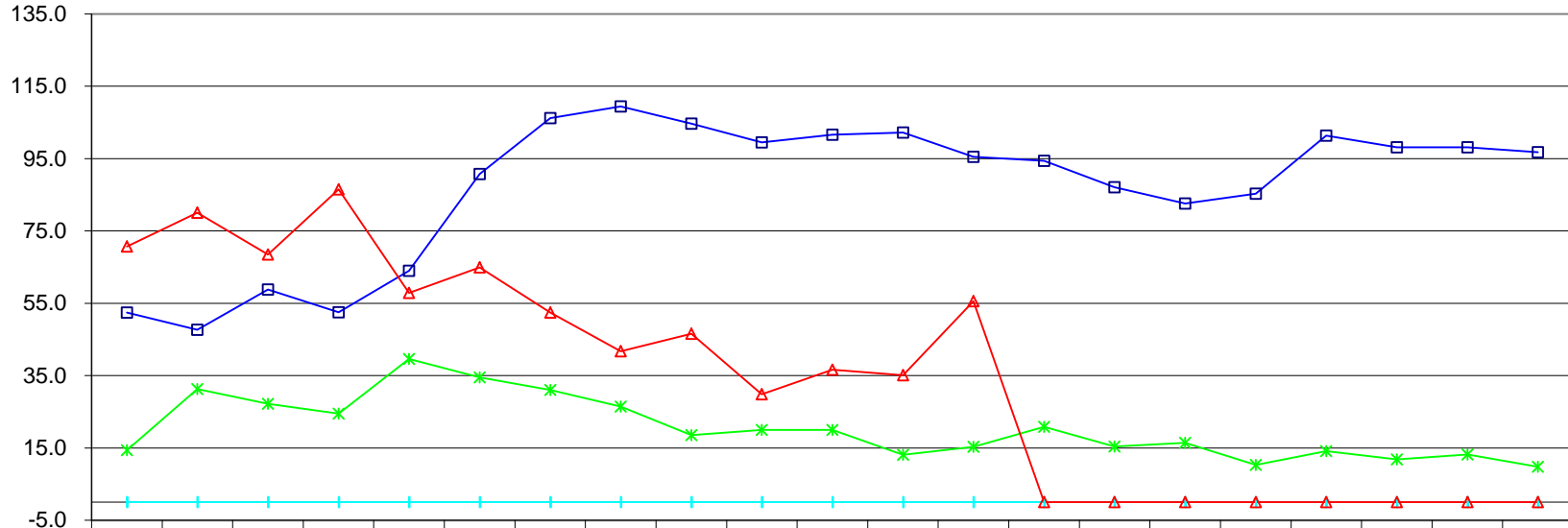


	1985	1986	1987	1988	1989	1990	1991	1992	1993	1994	1995	1996	1997	1998	1999	2000	2001	2002	2003	2004	2005
—■— Honolulu	75.2	68.4	84.4	81.9	58.4	77.7	67.3	68.0	63.0	57.7	44.8	47.6	45.3	55.8	54.2	51.4	53.8	56.2	60.4	64.3	63.4
—*— Hawaii	35.3	36.8	43.5	50.8	35.9	40.5	41.0	49.6	51.9	56.7	45.9	45.4	42.8	39.0	34.6	38.4	37.7	48.6	41.6	42.4	41.0
—+— Kauai	37.9	37.5	37.7	49.6	50.4	55.7	67.6	40.7	41.1	39.8	40.9	37.8	51.7	55.7	35.9	50.1	57.1	57.0	66.3	79.2	70.7
—▲— Maui	27.6	26.1	26.1	27.3	30.4	35.7	32.5	32.5	28.8	25.4	27.9	29.5	32.7	25.0	26.0	27.4	37.3	37.5	38.9	39.9	38.4

Calendar Year

Occupancy Rates Pediatric

Occupancy
Rate (%)

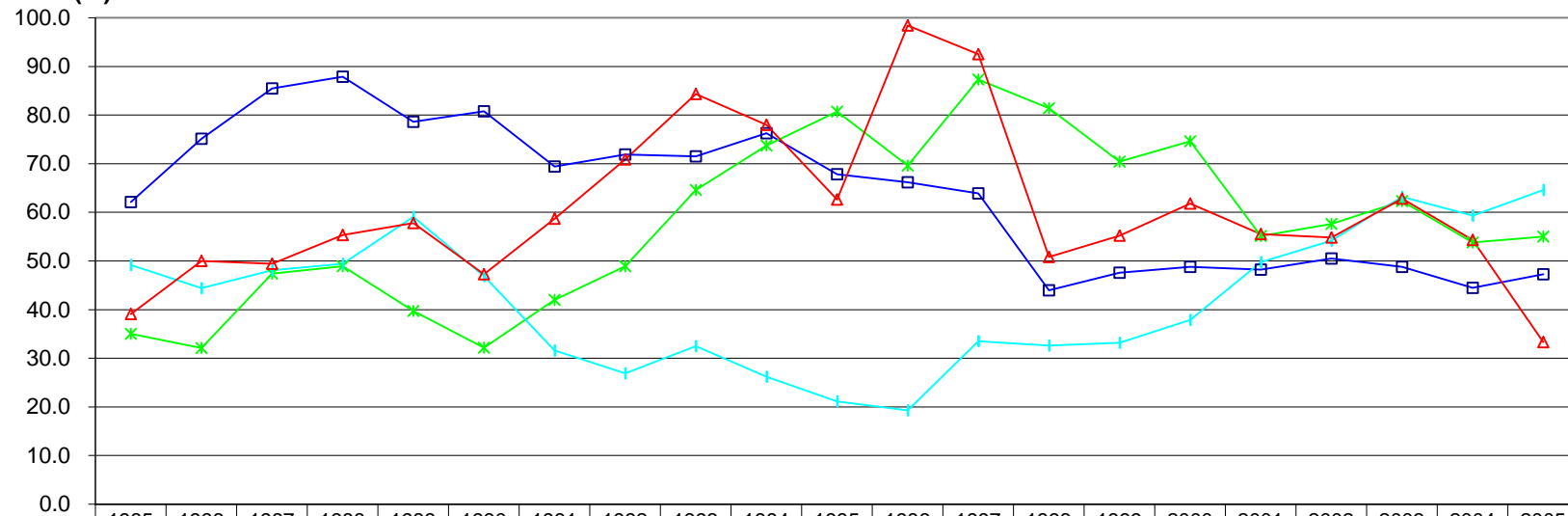


	1985	1986	1987	1988	1989	1990	1991	1992	1993	1994	1995	1996	1997	1998	1999	2000	2001	2002	2003	2004	2005
—■— Honolulu	52.4	47.7	58.8	52.5	64.0	90.7	106.2	109.4	104.7	99.5	101.6	102.2	95.5	94.4	87.1	82.6	85.3	101.4	98.1	98.1	96.8
—*— Hawaii	14.4	31.3	27.2	24.5	39.6	34.5	31.0	26.4	18.5	20.0	20.0	13.1	15.3	20.8	15.4	16.4	10.3	14.1	11.8	13.2	9.8
—+— Kauai	0.0	0.0	0.0	0.0	0.0	0.0	0.0	0.0	0.0	0.0	0.0	0.0	0.0	0.0	0.0	0.0	0.0	0.0	0.0	0.0	0.0
—▲— Maui	70.7	80.0	68.5	86.5	57.9	64.9	52.4	41.7	46.6	29.8	36.6	35.1	55.6	0.0	0.0	0.0	0.0	0.0	0.0	0.0	0.0

Calendar Year

Occupancy Rates Psychiatric

**Occupancy
Rate (%)**



	1985	1986	1987	1988	1989	1990	1991	1992	1993	1994	1995	1996	1997	1998	1999	2000	2001	2002	2003	2004	2005
—■— Honolulu	62.1	75.1	85.5	87.9	78.6	80.8	69.4	71.9	71.5	76.3	67.8	66.2	63.9	44.0	47.6	48.8	48.3	50.5	48.8	44.5	47.3
—*— Hawaii	35.0	32.1	47.4	48.9	39.7	32.2	42.0	48.9	64.6	73.7	80.7	69.6	87.3	81.4	70.4	74.6	55.1	57.6	62.3	53.8	55.0
—+— Kauai	49.2	44.4	48.1	49.4	59.1	46.9	31.6	26.9	32.5	26.2	21.1	19.3	33.5	32.6	33.2	37.9	49.7	54.2	63.2	59.3	64.6
—▲— Maui	39.1	50.0	49.4	55.3	57.8	47.3	58.7	70.9	84.3	78.0	62.6	98.4	92.5	50.8	55.2	61.8	55.5	54.8	62.8	54.3	33.3

Calendar Year