

The background features a vertical gradient from light purple at the top to a darker blue at the bottom. Scattered across this background are numerous water droplets of various sizes, some with soft shadows, giving a sense of depth and texture. The text is centered in the upper half of the image.

# HAWAII DEPARTMENT OF HEALTH STATEWIDE PFAS STUDY

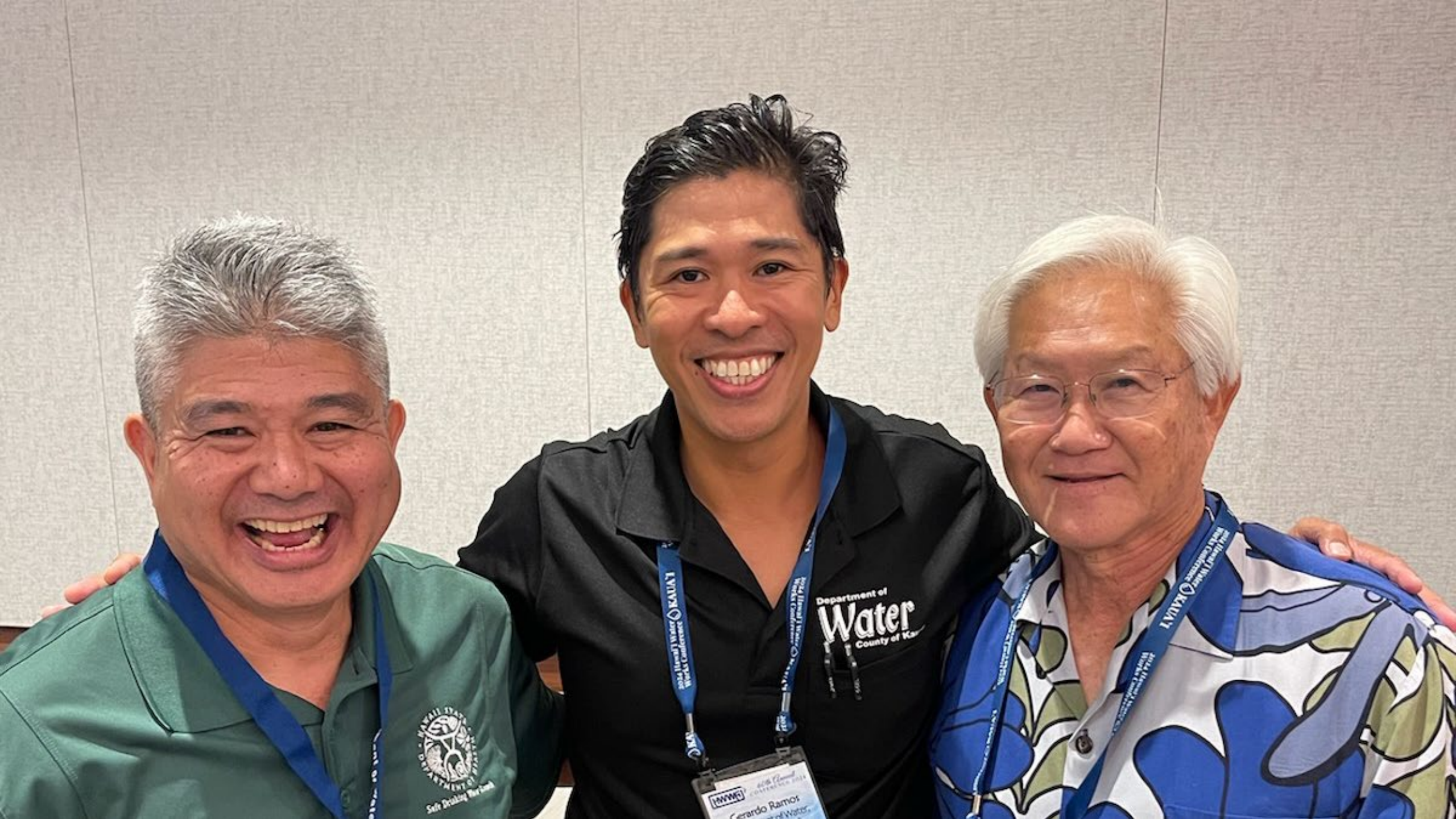
# AGENDA

- WHO WE ARE
- WHAT WE DO
- WHAT WE DID
- WHY WE DID IT
- WHAT WE ARE GOING TO DO NEXT
- KUNIA VILLAGE NARRATIVE
- WHAT ISLAND IS THIS PICTURE TAKEN ON



**WHAT ISLAND IS  
THIS PICTURE TAKEN  
ON**

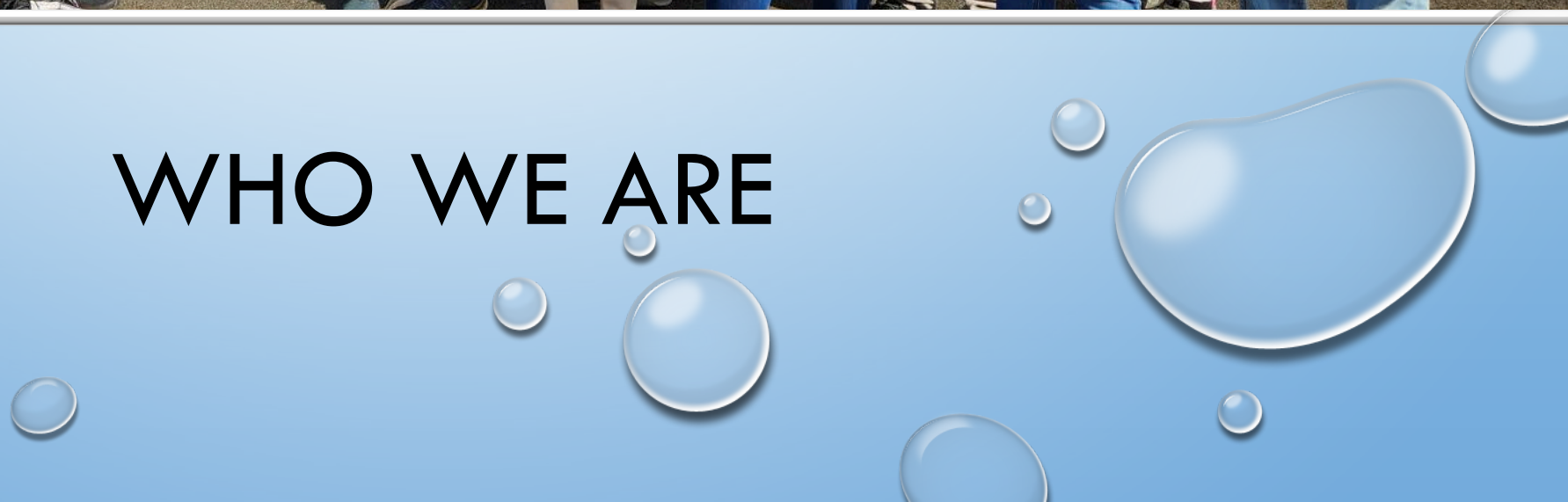








# WHO WE ARE





# WHAT WE DO







# DRINKING WATER SAMPLER TRAINING



# WHAT WE DID





# PFAS APPLICATIONS

Waterproofing-  
clothing, carpets

Non-stick

Cosmetics

Personal care  
products

Food  
packaging

Fire fighting  
foam

# WHERE IS PFAS FOUND

Plants

Animals

People

Environment- rainwater





WHAT ISLAND IS THIS PICTURE TAKEN  
ON







# PFAS SAMPLING BACKGROUND

- IN 2022, SDWB HAS COLLECTED PFAS SAMPLES FROM 25 WATER SYSTEMS (11 COUNTY SYSTEMS+ 14 PRIVATE).
- IN 2023, SDWB HAS COLLECTED PFAS SAMPLES FROM 34 WATER SYSTEMS.
- IN 2023 AND 2024, UCMR 5 SAMPLES HAVE BEEN COLLECTED FROM 29 WATER SYSTEMS (18 COUNTY SYSTEMS, 6 MILITARY SYSTEMS, 2 SCHOOLS, 3 PRIVATE)
- 
- TOTAL 86 SYSTEMS (27 COUNTY, 6 MILITARY SYSTEMS, 53 PRIVATE SYSTEMS) HAVE BEEN PARTIALLY COVERED IN THE INITIAL MONITORING.



WHAT ISLAND IS THIS PICTURE TAKEN  
ON









# STATEWIDE PFAS STUDY







# STUDY OVERVIEW

- 27 SAMPLES WERE COLLECTED 25 SITES ON KAUAI, OAHU, MOLOKAI, MAUI AND HAWAII
- SITES INCLUDED CURRENT AND FORMER AGRICULTURAL LANDS, INDUSTRIAL SITES, URBAN AND RESIDENTIAL AREAS
- SAMPLES WERE COLLECTED AND SHIPPED SAME DAY TO LABORATORY IN CALIFORNIA FOR ANALYSIS
- 2 DIFFERENT EPA METHODS ARE USED TO ANALYZE FOR 29 DIFFERENT COMPOUNDS
- EPA METHOD 533 IDENTIFIES 25 ANALYTES
- EPA METHOD 537.1 IDENTIFIES 18 ANALYTES



# STUDY RESULTS

- OF THE 25-COLLECTION SITE, 2 LOCATION SAMPLES HAD DETECTIONS FOR SOME OF THE PFAS ANALYTES
- THE 2 DETECTIONS WERE LOCATED AT COLLECTION SITES IN CENTRAL OAHU, BOTH CURRENT OR FORMER AGRICULTURE LANDS
- AT KUNIA VILLAGE PUBLIC WATER SYSTEM, THERE EXCEEDANCES OF THE MAXIMUM CONTAMINANT LEVELS FOR 2 OF THE ANALYTES, PFOA AND PFOS
- KUNIA VILLAGE WAS ADVISED TO PROVIDE AN ALTERNATE SOURCE OF DRINKING WATER TO THEIR RESIDENTS.







**WHAT ISLAND IS  
THIS PICTURE TAKEN  
ON**









- IN 2023, HDOH INITIATED PHASE II OF THE STATEWIDE PFAS STUDY WHERE PFAS DRINKING WATER SAMPLES WERE COLLECTED AN ADDITIONAL 34 PUBLIC WATER SYSTEMS LOCATED ON HAWAII, MAUI, MOLOKAI, LANAI, OAHU AND KAUAI



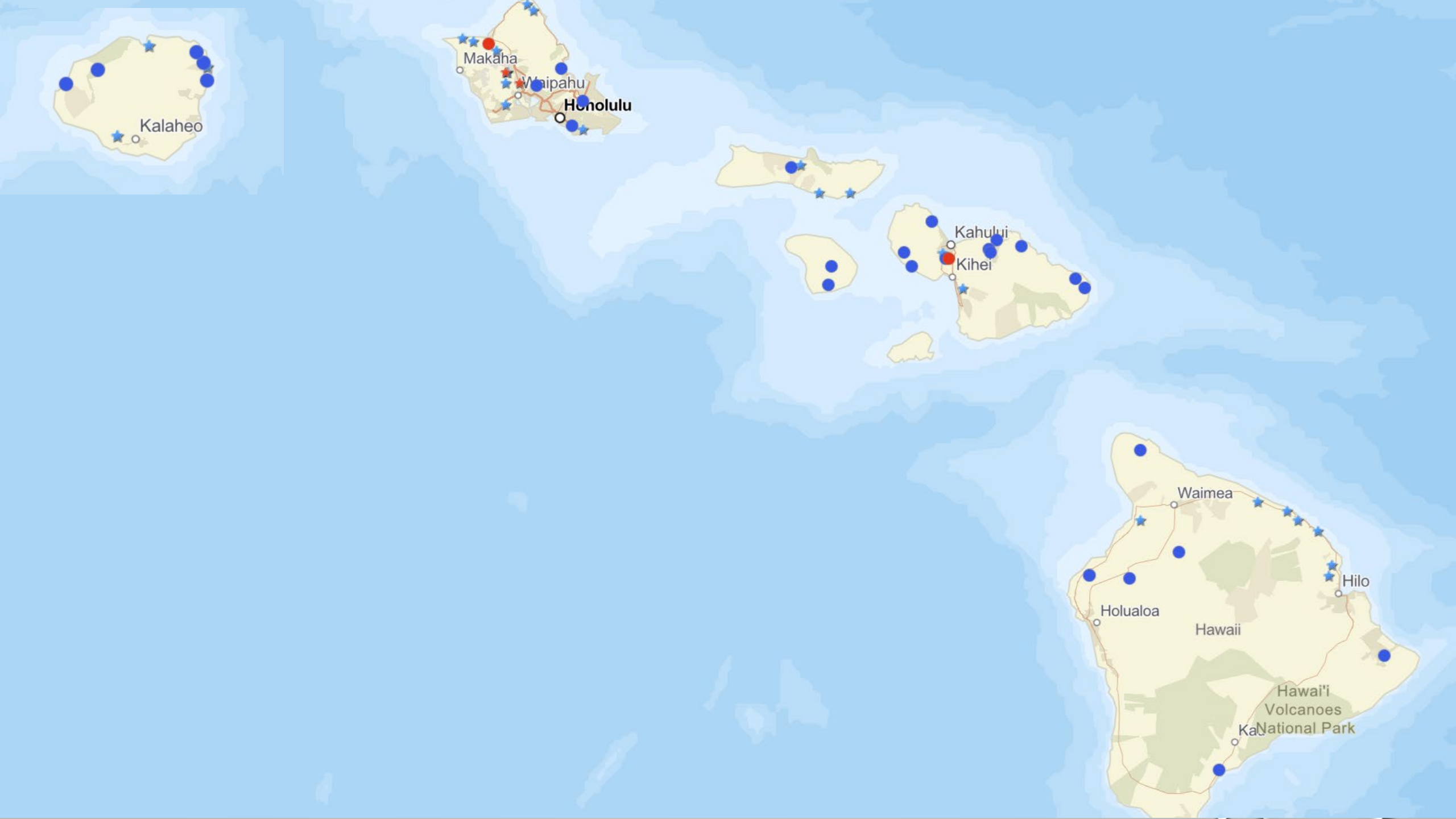


**WHAT ISLAND IS  
THIS PICTURE TAKEN  
ON**









Makaha

Waipahu

Honolulu

Kahului

Kihei

Waimea

Holualoa

Hawaii

Hilo

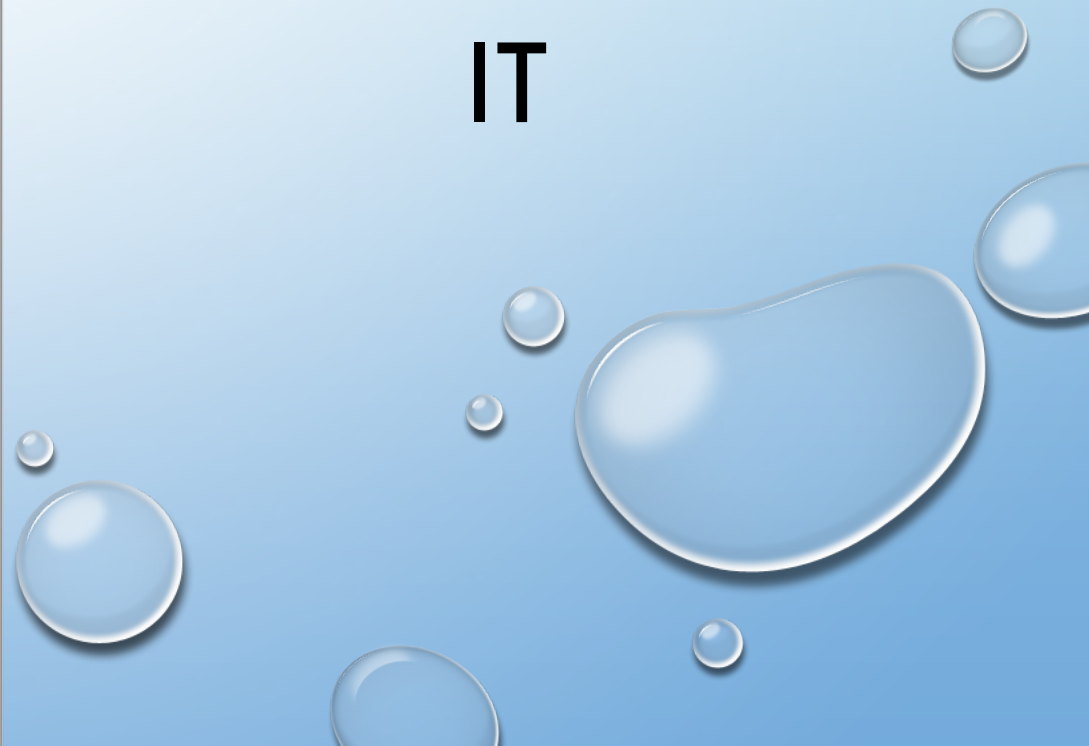
Hawai'i  
Volcanoes  
National Park

Kalaheo





**WHY WE DID  
IT**





# PFAS DETECTIONS IN DRINKING WATER

From 2020 to APRIL 2024 there have been 13 drinking water sources that reported detection of pfas

12 sources with detections are located on Oahu

1 source is located on Maui



THE HAWAII DEPARTMENT OF  
HEALTH HAZARD EVALUATION AND  
EMERGENCY RESPONSE OFFICE  
MAINTAINS A WEBSITE THAT POST  
ALL PFAS DETECTIONS OF  
DRINKING WATER IN PUBLIC WATER  
SYSTEM LOCATED AT THIS QR  
CODE



**PFAS Detections in Drinking Water Reported to DOH as of March 8, 2024**

PFAS chemicals are currently not regulated by the US EPA. As unregulated contaminants, it is up to water system operators to decide if they want to test for these chemicals. If they decide to test for PFAS and find them for the first time (first detection), the water system is required to report these first detections to the Department of Health Safe Drinking Water Branch (SDWB). Upon receiving notice of these first detections, DOH SDWB issues a press release to further notify the public. Please see below for detections of PFAS in drinking water that have been reported to the DOH SDWB.

Location of PFAS Detection	Water System Operator	Chemicals Detected	Date	Link to Notification and More Information
Maui Business Park System	Maui Business Park Phase II Association	PFOA, PFHpA, PFHxA, PFPeA, PFBA	April 3, 2024	<a href="#">DOH NEWS RELEASE – PFAS DETECTED IN MAUI BUSINESS PARK SYSTEM Apr 17, 2024</a>
Waiialua Sugar Pump 2 System	Dole Food Co., Inc.	PFOA, PFOS, PFBS, PFPeA, PFHxS, PFHxA, PFHxA	August 30, 2023, November 13, 2023, Feb. 26, 2024	<a href="#">DOH NEWS RELEASE – PFAS DETECTED IN WAIALUA SUGAR PUMP 2 SYSTEM Nov 29, 2023</a> <a href="#">DOH NEWS RELEASE – PFAS DETECTED IN WAIALUA SUGAR PUMP 2 SYSTEM Mar 8, 2024</a>
Halawa Wells	Honolulu Board of Water Supply	PFOA, PFHxS (2020), PFOA, PFHxS, PFHxA, PFOS, PFPeA (2023)	September 2020 February 2023	<a href="#">Halawa Wells News Release 2020</a> <a href="#">Halawa Wells News Release 2023</a>
Aiea Halawa Shaft	Navy Joint Base Pearl Harbor Hickam	PFOA, PFOS, PFBS, PFHxS, PFHxA	November 2020 and 2021	<a href="#">JBPHH Water System Consumer Confidence Report</a>
Aina Koa Well I	Honolulu Board of Water Supply	PFPeA	November 3, 2021	<a href="#">Aina Koa News Release</a>
Kipapa Acres	Kipapa Acres C.P.R.	PFOA	December 19, 2022	<a href="#">Kipapa Acres News Release</a>
Waipahu Wells II	Honolulu Board of Water Supply	PFHxA	January 6, 2023	<a href="#">Waipahu Wells News Release</a>
Del Monte Kunia 3 Well	Kunia Village	PFBA, PFPeA, PFHxA, PFHpA, PFOA, PFBS, PFHpS, PFPeS, PFHxS, PFOS, 6:2 FTS	January 20, 2023	<a href="#">Kunia Village News Release</a>
Makakilo Well	Honolulu Board of Water Supply	PFPeA	February 10, 2023	<a href="#">Makakilo Wells News Release</a>
Waipio Heights Wells	Honolulu Board of Water Supply	PFOS, PFPeA	March 22, 2023	<a href="#">Waipio Heights Well News Release</a>
Moanalua Wells	Honolulu Board of Water Supply	PFBA	March 31, 2023	<a href="#">Moanalua Wells News Release</a>
Kunia Well #4	Kunia Village	PFBA, PFBS, PFHpA, PFHxA, PFHxS, PFOA, PFOS, PFPeA, PFPeS	April 26, 2023	<a href="#">Kunia Well #4 News Release</a>
Ka'amilo Wells Pumping Station	Honolulu Board of Water Supply	PFBS, PFHxA, PFHxS, PFOA, PFOS, PFPeA	April 26, 2023	<a href="#">PFAS Detected in Ka'amilo Wells Pumping Station</a>





**WHAT ISLAND IS  
THIS PICTURE TAKEN  
ON**









**WHAT ARE WE GOING TO DO NEXT**





- HDOH WILL BE CONDUCTING ADDITIONAL SAMPLING TO COLLECT MORE DATA AND ASSIST PUBLIC WATER SYSTEMS TO DETERMINE THE IMPACT PFAS MAY HAVE ON THEIR SOURCES





# KUNIA VILLAGE NARRATIVE









**BIL**



**Bipartisan  
Infrastructure  
Law**





**WHAT ISLAND IS  
THIS PICTURE TAKEN  
ON**







# ACKNOWLEDGEMENTS





QUESTIONS?