

PHYSICAL ACTIVITY & NUTRITION NEWS



HAWAI'I PAN NEWSLETTER

IN THIS ISSUE

PAGES 2-9: PHYSICAL ACTIVITY

- *HMSA Outdoor Fitness Courts in Maui*
- *Kaua'i Mountain Biking Community Hosts Anahola Epic for Community Health and Resilience*
- *Community Voices Shape Haleko Road in Kaua'i*
- *O'ahu Metropolitan Planning Organization Transportation Tour & Forum*
- *Hawai'i Bicycling League BikeEd Classes*
- *People for Active Transport Hawai'i (PATH) Kona Bike Day*
- *Kamaile Academy Quick Build Mural Project*



PAGES 12-14: NUTRITION

- *Kōkua Harvest Milestone Harvesting Achievement*
- *Hawai'i County Master Food Volunteer Pilot Program Begins*
- *Virtual Nutrition Classes by National Kidney Foundation*

PAGES 15-16: PHYSICAL ACTIVITY & NUTRITION

- *Healthy Hawai'i Strategic Plan Summit 2025*
- *Navigating Change: The Hawai'i Public Health Institute (HIPHI) 2026 Community Health Conference*



This newsletter is brought to you by the Hawai'i State Department of Health, Chronic Disease Prevention and Health Promotion Division, Primary Prevention Branch.

HIGHLIGHTED PROJECTS, PROGRAMS, & INITIATIVES



➤ Physical Activity



TWO OUTDOOR FITNESS COURTS OPEN IN CENTRAL MAUI

Two free Fitness Courts – one at Keōpūolani Regional Park and one at Kahului Community Center Park – opened to the public after a blessing on July 7th, 2025, at Keōpūolani, in partnership with the County of Maui, Hawai'i Medical Service Association (HMSA) and National Fitness Campaign (NFC). Developed to expand open, equitable access to exercise for communities, The Fitness Courts let users leverage their own bodyweight to get full-body workouts using seven exercise stations.



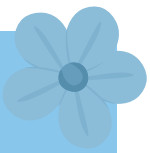
Users may also download the free Fitness Court App, which acts as a “coach in your pocket and enhances the outdoor gym into a digitally supported wellness experience.” Fitness Court workouts are created for individuals of all abilities ages 14 and older, and are adaptable for all fitness levels, allowing participants to move at their own paces, according to NFC.



Maui is the second island in the state to offer Fitness Court facilities. O’ahu has an HMSA-sponsored Fitness Court at Waipahu High School. Unique to Maui is the collaboration with Maui Public Art Corps to create artistic backdrops for the new Fitness Courts. Murals were completed by Maui artist Courtney Holland at Keōpūolani Regional Park and Los Angeles-based artist James Dinh at Kahului Community Center Park.



HIGHLIGHTED PROJECTS, PROGRAMS, & INITIATIVES



➤ Physical Activity, Cont'd



TWO OUTDOOR FITNESS COURTS OPEN IN CENTRAL MAUI

County of Maui, HMSA and NFC officials recognized the milestone during the July 7th, 2025 blessing and opening event. "The opening of the new Fitness Courts in Central Maui marks a significant milestone for our community's commitment to health and wellness," said Mayor Richard Bissen.



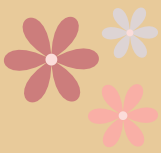
"These state-of-the-art facilities provide an accessible, welcoming space where residents can engage in physical activity, build strength and improve overall well-being. By investing in fitness infrastructure, we are not only promoting healthier lifestyles but also fostering a stronger, more vibrant community. Mahalo to HMSA and NFC for bringing the Fitness Courts to Maui and empowering our people to take charge of their health."

"HMSA is excited to bring the Fitness Courts to the Kahului community, creating a welcoming space where Maui residents can come together to stay active, healthy, and connected," said Jennifer Diesman, HMSA senior vice president of government policy and advocacy. "Our sincere thanks to Mayor Bissen and his team for their invaluable partnership and shared commitment to fostering healthier lifestyles in Maui."

"We are excited to have the County of Maui join us in the journey to improve health and wellness as we work to make a powerful and long-lasting impact on health outcomes and happiness by building healthy communities across America," said Mitch Menaged, founder of National Fitness Campaign. "The addition of the outdoor Fitness Courts, along with digital wellness programming, demonstrates a tremendous commitment to the health and well-being within the community."



For more information on HMSA's support of NFC, visit nationalfitnesscampaign.com/hawaii



HIGHLIGHTED PROJECTS, PROGRAMS, & INITIATIVES



➤ Physical Activity

THE ANAHOLA EPIC 2026: A PRESCRIPTION FOR COMMUNITY HEALTH AND RESILIENCE



The dust has settled on the inaugural Anahola Epic 2026, and while the record books will show a successful mountain bike race, the true impact is measured in the health and vitality of the Kaua'i community. As the first of what will become an ongoing tradition, the Anahola Epic proved that mountain biking is more than just a sport—it is a powerful tool for public health, physical resilience, and community stewardship.



By the Numbers: A Healthy Success

The event, held in early February 2026, saw an incredible turnout that underscored the island's expanding interest in active recreation:

- 75 paid registrants and 65 finishers ranging in age and experience.
- \$11,855 raised for 'Āina Alliance, directly supporting the safety and maintenance of local recreation areas.
- The excitement surrounding the race boosted MTB Kauai's membership to 109 active members, all committed to regular physical activity.

The Health Benefit: Beyond the Trail

- Mountain biking offers a unique combination of cardiovascular conditioning and "green exercise." For the participants of the Anahola Epic, the race provided:
- Cardiovascular & Core Strength: Navigating the technical single tracks of Anahola requires intense aerobic output and constant core engagement, offering a full-body workout that improves heart health and stability.
- Mental Well-being: The "flow state" achieved on the trail provides a significant mental reset. As one participant noted, even at age 70, the goal is to stay active and keep the body intact through managed, engaging exercise.
- Social Connection: Through weekly group rides and "Dig Days," the club encourages social engagement by fostering a multi-generational community of outdoor enthusiasts.

Stewardship as Wellness

Public health is inextricably linked to the health of our land. The Anahola Epic was a partnership in stewardship. By clearing invasive brush and maintaining trails, the club has created a "gym without walls" that is free for the community to use.

The Anahola Epic 2026 was a victory for the Garden Isle. When we invest in trails, we are investing in the long-term health, resilience, and happiness of our people.

Mahalo Bob Morrell and MTB Kauai!



HIGHLIGHTED PROJECTS, PROGRAMS, & INITIATIVES



Physical Activity

COMMUNITY VOICES SHAPE HALEKO ROAD: A THREE-DAY CHARRETTE BRINGS KAUA'I TOGETHER



Something remarkable happened on Haleko Road in January 2026: for three days, people from across the island took part in a **Haleko Road Design Community Charrette**—a collaborative effort that went beyond simple corridor planning and encouraged listening, walking, imagining, and building trust together. The event felt like a blend of workshop and family reunion, where everyone's input was valued and every idea was welcomed. Before mapping began, partners from Kaua'i County, SSFM, Get Fit Kaua'i, the Hawai'i Department of Health (DOH), the Hawai'i Institute for Public Health (HIPHI) and walk-audit trainees met to ensure everyone was ready to listen, ask relevant questions, and create a process residents could own from the start.

Haleko Road Design Workshop

Help shape the future of Haleko Road!

The project will implement pedestrian and bicycle improvements, improve traffic flow, and resurface the roadway.

<p>Event: Community Walk Audit and Public Workshop Date: Tuesday, January 13th Time: 4:30 pm to 8:00 pm Location: P'Yo Building (310 Civic Center, 4444 Rice St.)</p> <p>Agenda:</p> <ul style="list-style-type: none"> • Assembler 4:30 pm • Walk 5:00 to 6:00 pm • Opening workshop: 6:00 to 8:00 pm. <p>Dinner will be provided.</p>	<p>Event: Closing Presentation and Design Concepts Share Out Date: Thursday, January 15th Time: 5:00 pm to 7:00 pm Location: P'Yo Building (310 Civic Center, 4444 Rice St.)</p> <p>Agenda:</p> <ul style="list-style-type: none"> • Presentation of design concepts • Open House Q&A • Dinner will be provided.
--	---

The public workshop is a collaboration between the County of Kauai, the Hawai'i Department of Health, and Hawai'i Public Health Institute.

Anyone needing auxiliary aid or service or other accommodations due to a disability may contact Ms. Marie Williams at mariewilliams@kauai.gov or 808-241-4067. Requests made as soon as possible will allow adequate time to fulfill any requests. Upon request, this notice is available in alternative formats such as large print, braille, or electronic copy.

Scan the QR code to learn more.
 Contact Pat@hawaii.gov with dietary restrictions.



Day 1: Seeing the Corridor with Fresh Eyes

Tuesday began with agencies from across the island crowding around maps, pointing out challenges and possibilities. But the real shift happened once everyone stepped onto Haleko Road. Walking the corridor together — engineers, planners, residents — created a shared understanding no presentation could match. That evening, the community poured in. Families, apartment managers, HOA reps, longtime residents — all ready to walk, talk, and dream. The workshop buzzed with energy as people clustered around tables, sketching ideas, placing post-its, and imagining what a safer, more connected Haleko Road could become. One of the most powerful moments came when residents named their core values for the corridor — **safety, connection, dignity, access, a sense of place, and honoring the historic character of the area**. Those values became the compass for every design decision that followed. The room carried a collective message: We know this place. We know what it needs. Let's build it together.



HIGHLIGHTED PROJECTS, PROGRAMS, & INITIATIVES



➤ Physical Activity, Cont'd



COMMUNITY VOICES SHAPE HALEKO ROAD: A THREE-DAY CHARRETTE BRINGS KAUA'I TOGETHER



Day 2: Leaders, Youth, and the Heart of the Design

Wednesday morning brought business owners and community leaders who spoke candidly about safety, vitality, and the future of Lihue. After another walk audit, the design team began weaving together the themes emerging from every conversation. Then came the youth session — and the story deepened. Students from Chiefess Kamakahalei Middle School shared what it feels like to walk or bike Haleko Road as a kid. Their honesty cut through the technical talk and reminded everyone why this work matters. Their insights reshaped the design in ways only keiki could inspire.

Day 3: The Vision Comes Into Focus

By Thursday, the design team had translated three days of listening into draft concepts. That evening, residents returned — curious, hopeful, ready to see what their collective voice had created.

Presenters Mark Fenton, Michael Moule, and Mike Packard walked the community through the emerging design, sparking thoughtful questions, refinements, and a sense of shared accomplishment. The consensus was striking, people could see themselves in the design with their concerns, their ideas, their lived experience coming together.



A Model for Community-Driven Planning

The Haleko Road Charrette became more than a planning exercise because when government, engineers, and residents work side by side, trust grows, creativity flourishes, and solutions reflect the soul of the community.

This wasn't just about a road. It was about connection — between agencies, between neighbors, between generations. And if the energy of those three days is any sign, Haleko Road is on its way to becoming a corridor that truly serves everyone, from keiki to kūpuna.



Mahalo Bev Brody and County of Kauai – for questions, please contact bbrody1@hawaii.rr.com



HIGHLIGHTED PROJECTS, PROGRAMS, & INITIATIVES



➤ Physical Activity



OMPO GATHERS DIVERSE VOICES IN SUPPORT OF TRANSPORTATION SAFETY AND ACCESSIBILITY

The start of 2026 saw a positive movement toward increasing the safety and accessibility of our roads and transit systems for all users through a three-day Transportation Event hosted by the O’ahu Metropolitan Planning Organization (OMPO).

To begin the discussions that spanned this three-day event, OMPO hosted a **Transportation Tour** on Wednesday, January 7, 2026 to offer a small group of participants a multimodal experience and insight into the transportation options available in Honolulu and the surrounding areas. The group rode the Skyline, engaged with Walk Audit expert Mark Fenton during walking tours of Waipahu and Iwilei, and caught a ride on an electric bus, one of many Honolulu has added to its fleet in pursuit of its 100% renewable energy goal by 2035.

On Thursday, January 8, 2026, OMPO, in partnership with the Hawai’i Department of Health (DOH) and the Hawai’i Institute for Public Health (HIPHI), gathered local leaders, experts, guest speakers, and community-based organizations for a full-day, solutions-focused **Transportation Forum** to explore local needs and share best practices from around the world.

The Forum, held at Fuller Hall in Honolulu, hosted 150 individuals from across the state interested in sharing their experiences and learning how to make our streets and communities safe and accessible for all.

Throughout the day, speakers and panelists shared ideas and strategies on topics ranging from active transportation and high-capacity transit to safety and sustainability, and also touched on housing and transit-oriented development.

Opening remarks from **Mark Garrity of OMPO**, **Lola Irvin of the DOH**, and **Richelle Takara**, followed by a moving keynote address from **Ana Lucaci of Made2Walk**, recounting a personal story and calling for pedestrian safety on all our streets.



HIGHLIGHTED PROJECTS, PROGRAMS, & INITIATIVES



➤ Physical Activity, Cont'd

OMPO GATHERS DIVERSE VOICES IN SUPPORT OF TRANSPORTATION SAFETY AND ACCESSIBILITY



Various panel discussions, moderated by local transportation leaders, offered the opportunity to learn from experts such as Bruce Appleyard from San Diego State University, Mark Fenton from Tufts University, Todd Litman from the Victoria Transport Policy Institute, and Angie Schmitt, the author of "Right of Way." The presentations focused on pedestrian and cyclist safety, multimodal and affordable transportation, and connecting communities through creative land use.



Rounding out the day, the attendees heard from Hawai'i Department of Transportation Director Ed Sniffen, City and County of Honolulu Department of Transportation Services Director Roger Morton, and several Legislative officials.



On Friday, January 9, 2026, OMPO hosted a meeting with Legislative Officials at the Capitol Building to discuss the findings from the Transportation Tour and Forum. The discussions centered on how the Officials may implement legislation to improve the safety and accessibility of active and mass transportation throughout the state, benefiting the lives of residents and visitors over the coming years.

Over the course of the three-day event, attendees and local and world leaders shared insight into the needs of our communities. They gained knowledge about how we, as a state, can move forward to make our streets safer, our communities more connected, and our people and planet healthier.

If you have questions about these events or want to learn how to get involved in HIPHI's Active Transportation and Built Environment initiatives, please contact Patti Hatzistavarakis at patti@hiphi.org.

HIGHLIGHTED PROJECTS, PROGRAMS, & INITIATIVES



➤ Physical Activity

HAWAI'I BICYCLING LEAGUE FREE BIKE WORKSHOPS



You may know that Hawai'i Bicycling League (HBL) has been educating thousands of keiki annually through its BikeEd program (since 1989!), but did you know that HBL also offers plenty of bike education classes for adults? If you want to have a more enjoyable, comfortable, and safe ride with your bike on the urban streets of Honolulu, the 2-hour on-bike Bicycling Basics workshop is for you! Interested in beefing up your bike mechanic skills and getting confident fixing a flat on your own two-wheels? Take HBL's 90-minute Fix-a-Flat workshop where you'll gain the knowledge & know-how with hands-on practice repairing a punctured tube on your own bike & learn how to prevent future flats.



HBL also offers more advanced courses like the 2.5-hour Road Cycling Skills to cyclists looking to boost their bike handling skills. Learn with HBL's friendly, experienced instructors who will cover efficient gear-shifting, group riding skills, lane positioning, your rights & responsibilities as a bicyclist, hazard avoidance maneuvers, and more. If you've been curious what's the deal with these bicycles with electric motors - attend an E-Bikes 101 workshop where you'll have all your questions answered, plus the chance to choose from HBL's choice selection of different styles & types of e-bikes to test ride.

This free, 2-hour workshop covers all you need to know about the laws that regulate electric bikes, the key differences between traditional bicycles, critical considerations if you're thinking of getting one, and how to ride & share our roads safely as a driver of a vehicle.



*These bike classes are offered at no cost and are currently available all around O'ahu!
Find one that fits your schedule and sign up to reserve your spot at [HBL.org/WORKSHOPS](https://www.hbl.org/WORKSHOPS)*

HIGHLIGHTED PROJECTS, PROGRAMS, & INITIATIVES



➤ Physical Activity

KONA BIKE DAY A HIT!



PATH hosted its first Kona Bike Day on January 24, a free bicycle day for kids of all ages to ride bikes on Ali'i Drive. Ali'i Drive from Likana Lane to Hualalai Road was closed to all traffic, and PATH set up a bike safety course for cyclists to ride. PATH brought out their trailer of bike education bikes available for kids to ride if they didn't have one, and HIBIKE bikeshare bikes for those aged 16+ to ride and brush up on bicycle safety. Helmets were available for everyone to wear if they didn't have their own.



"We wanted to do a Bike Day on Alii Drive to give kids the opportunity to come out and ride," said Kelly Hudik, chief operations officer of PATH.

"A lot of kids may not have a safe space where they can ride, for many it's just their driveway, or for some they have done Bike Ed classes with us and then that's it. So, giving kids a safe space to come out and ride their bike is what this event is all about. It's also to let kids know that it's okay for bikes to be on the street, along with letting drivers know that bikes do belong on the roads."

PATH partnered with the Kona Community Police Bicycle Patrol Officers, Bikeworks Kona, and the Kailua Village Business Improvement District, who all helped make the event a success.

*Mahalo Kelly Hudik and People for Active Transportation Hawaii (PATH)
For more information please visit <https://pathhawaii.org/>*



HIGHLIGHTED PROJECTS, PROGRAMS, & INITIATIVES



➤ Physical Activity

KAMAILE ACADEMY LEADS THE LEEWARD COAST'S FIRST QUICK BUILD MURAL PROJECT



Across O’ahu, quick build safety projects are transforming school zones and neighborhood streets. From improvements along Farrington Highway in Kalihi to projects near Stevenson Middle School in Makiki and in Waipahu, these efforts improve pedestrian safety while strengthening community engagement. Now, Kamaile Academy is leading the first quick build mural project on the Leeward Coast.

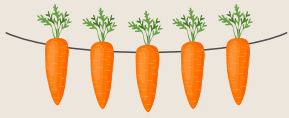
This milestone effort is made possible through a partnership between the Healthy Eating + Active Living (HEAL) Program, Kamaile Academy, the Hawai’i State Department of Health (DOH), and the Honolulu Department of Transportation Services (DTS). The planning team will work closely with students and residents to design a safer environment for walking to and from school. The project began after Kamaile Academy’s principal raised concerns about student safety along Ala Akau Street. During arrival and dismissal, many students use an unimproved walkway close to moving vehicles.



Mahalo Leigh Ann Lopez and the O’ahu HEAL Coalition – for questions please contact leighann@hiphi.org

In January, the planning team conducted an afternoon site visit at 2:00 p.m. and observed high volumes of students along the sidewalk and roadway, traffic circulation challenges, and opportunities to calm traffic and improve driver awareness.

Quick build projects are cost-effective, near-term improvements that use paint, signage, and temporary materials to test and implement safety upgrades. At Kamaile Academy, a crosswalk mural will be a key feature. The mural is designed to increase crossing visibility, encourage drivers to slow down, beautify the school zone, and foster student and community ownership of public space. The project aligns with Safe Routes to School, Complete Streets, and Vision Zero initiatives. Next steps include selecting a local artist and hosting listening sessions with students, residents, and Kamaile Academy Safety Officers to shape the mural design and support the project’s long-term success.



HIGHLIGHTED PROJECTS, PROGRAMS, & INITIATIVES



Nutrition

THE FOOD BASKET AND KOKUA HARVEST HIT HUGE HARVESTING MILESTONE!



THE FOOD BASKET IS THRILLED TO CELEBRATE **200,000 POUNDS** OF FRESH PRODUCE HARVESTED BY OUR **KŌKUA HARVEST PROGRAM** SINCE OCTOBER 2019!



This achievement reflects the power of the Hawaii Island community. With the dedication of volunteers, farmers, and partner organizations across the island, surplus fruits and vegetables that might otherwise go to waste are being harvested and redirected to families and kūpuna in every district. Every pound gleaned represents not just rescued food, but strengthened food security, reduced waste, and improved access to nutritious, locally grown produce.

As we look ahead, we remain committed to expanding gleaning efforts, deepening partnerships, and engaging more crop donors and volunteers in this impactful work. Together, we are transforming surplus into sustenance.

Mahalo to everyone who has helped us reach this incredible milestone. Here's to the next 200,000 pounds!



Mahalo Lisa DeSantis and Kōkua Harvest – for questions or ways to get involved please contact info@kokuaharvest.org



HIGHLIGHTED PROJECTS, PROGRAMS, & INITIATIVES



➤ Nutrition

EXTENSION MASTER FOOD VOLUNTEER PILOT PROGRAM COMMENCES IN HAWAI'I COUNTY



On February 7, 2026, the Hawai'i Extension Master Food Volunteer Program launched in Hawai'i County with an orientation at the Komohana Extension & Research Center. Volunteers were introduced to program goals and began their training through interactive activities.

Led by Marielle Hampton (UH-CTAHR Cooperative Extension), this pilot program prepares volunteers to deliver food and nutrition education across the county. Hampton also serves as Vice-Chair of the Hawai'i County Healthy Eating + Active Living (HEAL) Coalition Steering Committee. Emma Waters, Hawai'i County HEAL Coalition Coordinator, is part of the inaugural volunteer cohort, reflecting the coalition's support for this program as a 2026 priority.

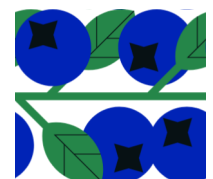
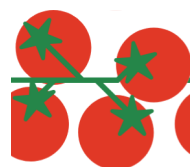
This initiative expands Extension services by training volunteers as community partners in food and nutrition education, emphasizing evidence-based guidance and local food systems.



Chef Sandy Barr-Rivera demonstrates knife skills to participants at the pilot program orientation.

Participants complete a 20-hour core curriculum (February–May) with virtual, in-person, and independent study. Topics include nutrition, culinary skills, food safety, health behavior change, and local food systems. Training ends with a capstone cooking demonstration.

From May 2026–April 2027, graduates intern and volunteer at approved sites. Afterward, Extension Master Food Volunteers commit to annual service hours and continuing education, contributing through activities such as workshops, demonstrations, and partnerships with local food banks and Extension initiatives.



*Mahalo Emma Waters and the Hawai'i County HEAL Coalition –
for more information please contact Emma at emmawaters@hiphi.org.*



HIGHLIGHTED PROJECTS, PROGRAMS, & INITIATIVES



➤ Nutrition



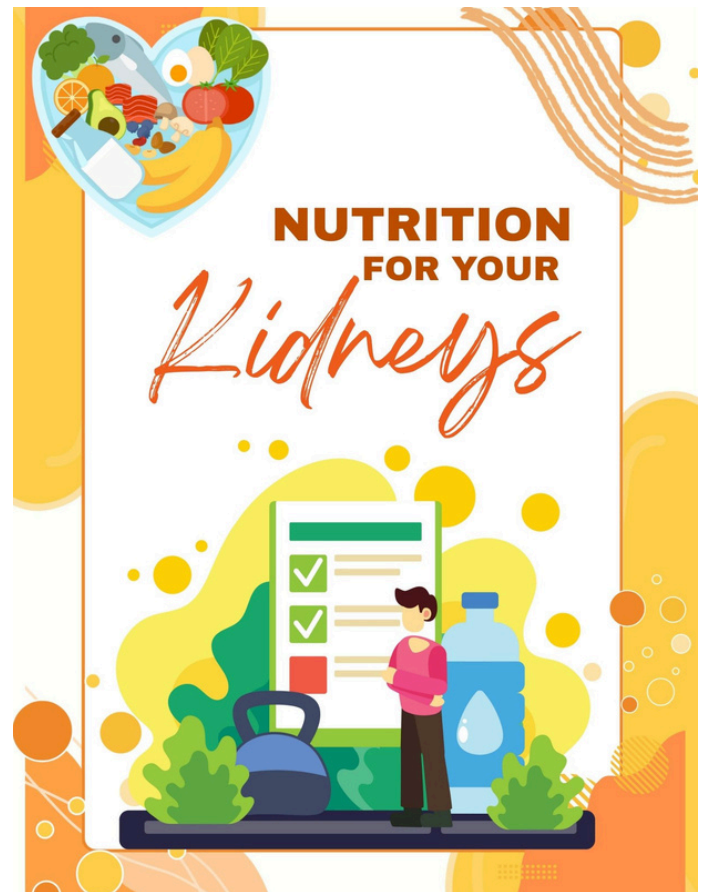
FUEL YOUR HEALTH: VIRTUAL NUTRITION CLASSES BY NATIONAL KIDNEY FOUNDATION OF HAWAII

What we choose to fuel our body is one of the most significant indicators of our wellbeing—eating well is an impactful and proactive effort to protect our kidneys. Navigating the complexities of a kidney-friendly diet does not need to be overwhelming. The National Kidney Foundation of Hawaii offers a variety of interactive, virtual nutrition classes focused on providing knowledge about the nutrients that can support kidney function. As the body’s natural filters, the types of foods that we put into our body can either be stressful on or supportive of our kidneys.

Led by a Registered Dietitian who specializes in kidney care, these virtual classes break down complex nutritional science into practical daily steps that make a real impact. Some nutritional topics include **Eating Smart for Your Kidneys**, **Convenience Store Shopping**, and **Rethink Your Drink**.

Whether you are looking to manage your daily sodium intake, understand how essential minerals like phosphorous and potassium affect your diet, or simply learn kidney-friendly recipes that incorporate our local flavors, these presentations are designed to assist you as you navigate it all.

Join these virtual classes for **FREE!** Where you’ll have the opportunity to ask questions and connect with others in the community and receive the tools to create personalized meals and grocery lists for your next trip to the store. Visit our website at **www.kidneyhi.org** find our class schedules and register under the Events tab.



Mahalo Chelsea Lautaha and National Kidney Foundation of Hawaii – for questions or more information please contact chelsea@kidneyhi.org

HIGHLIGHTED PROJECTS, PROGRAMS, & INITIATIVES



➤ Physical Activity & Nutrition

HEALTHY HAWAI'I STRATEGIC PLAN SUMMIT 2025



In December 2025, the Hawai'i State Department of Health (DOH) convened more than 300 partners and advocates statewide at the 2025 Healthy Hawai'i Summit. The summit provided guests with an opportunity to come together across the sectors to continue implementation of the Healthy Hawai'i Strategic Plan (HHSP) 2030, a roadmap for preventing and reducing chronic disease in the state. At the mid-point of this 10-year plan, HHSP partners have made lasting changes that support wellness for local families.



During the summit, guests were treated to an audio and visual wonderland as they walked through an outdoor space filled with posters showcasing the various HHSP projects partners are working on. The summit also featured presentations from local and national presenters detailing the impact of federal changes on their work.

Summit attendees then participated in sessions to discuss recent achievements and strategize on the use of existing assets and resources to continue implementation of the plan. Together, the HHSP partners continue to improve the places where residents live, learn, work, and play to make healthy options the easiest choice.

Mahalo to everyone who attended the 2025 Healthy Hawai'i Summit and for your continued work on the strategic plan. We look forward to what can be achieved in the next 5 years to realize the vision of a future Hawai'i where every person can attain their full health potential.

To view the HHSP or to get involved in this transformational process, visit www.HHSP.hawaii.gov.





HIGHLIGHTED PROJECTS, PROGRAMS, & INITIATIVES



➤ Physical Activity & Nutrition



HIPHI 2026 COMMUNITY HEALTH CONFERENCE



The Hawai'i Public Health Institute (HIPHI) invites you to join us at the 2026 Community Health Conference, which will be one of the largest gatherings of public health stakeholders in the Pacific. We anticipate over 250 attendees, with representatives from community-based organizations, health systems, local and state health agencies, non-profit organizations, academia, businesses, and more.

The conference theme, Navigating Change: Shaping the Future of Public Health, will provide insights into a rapidly evolving public health landscape marked by shifting federal priorities and funding cuts, while exploring pathways to advance the policies, systems, and environments that shape our health. The conference will center around four tracks:

- Environmental Health
- Workforce
- Research, Data, and AI
- Policy and Prevention

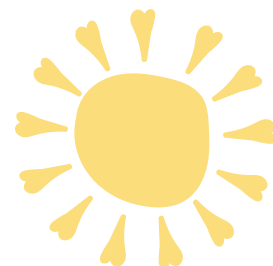
HIPHI welcomes your organization to become a sponsor at one of the largest gatherings of public health stakeholders in the Pacific. The conference will attract a diverse audience from across multiple sectors to advance the policies, systems, and environments that shape our health.

By aligning your organization with this event, you'll gain visibility among instrumental public health leaders, practitioners, and community advocates who are dedicated to advancing the health and wellness of Hawai'i and across the Pacific. Sponsorship packages offer unique opportunities to showcase your commitment to working collaboratively and building meaningful connections with partners to build healthier communities, and will position your organization as a trusted ally in public health. Sponsorship opportunities are limited, secure your spot today! Begin the process by applying at hiphi.org/conference.

Contact us!

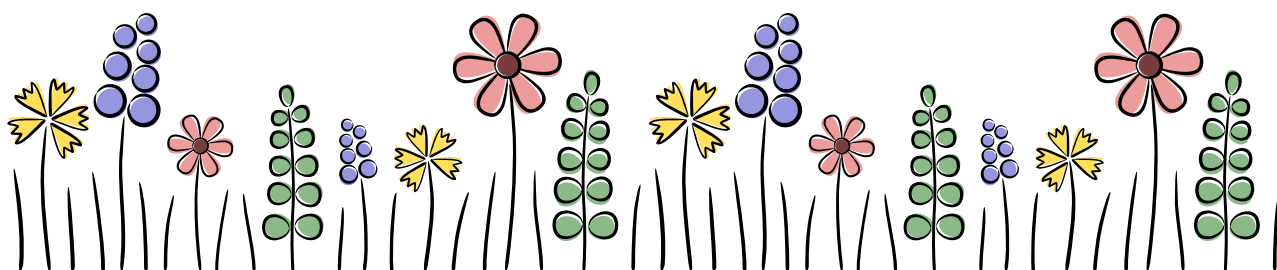


- Visit us at <https://livinghealthy.hawaii.gov> and <https://health.hawaii.gov/physical-activity-nutrition/>
- If you'd like your name removed from our mailing list, or to share other comments, please email Brynne at brynne.burrows@doh.hawaii.gov.



**Thank you to everyone for submitting
your articles and helping to create a
venue for information sharing among
PAN professionals in Hawai'i!**

Your contributions are appreciated.



DISCLAIMER

All information provided in this newsletter is believed to be accurate and reliable; however, the Hawai'i State Department of Health (DOH) makes no claims, promises, or guarantees about the absolute accuracy, completeness, or adequacy of the contents of this web site and expressly disclaims liability for errors and omissions in the contents of this newsletter. No warranty of any kind, implied, expressed, or statutory, including but not limited to the warranties of non-infringement of third party rights, title, merchantability, fitness for a particular purpose, and freedom from computer virus, is given with respect to the contents of this newsletter or its hyperlinks to other Internet resources. The information presented herein is not intended to diagnose, treat, cure or prevent any medical condition. The views and opinions of the originators expressed herein do not necessarily state or reflect those of the DOH. Unless otherwise noted on an individual document, DOH grants permission to copy and distribute files, documents, and information for non-commercial use, provided they are copied and distributed without alteration, and with proper citation to the DOH as the author of the materials. The Hawai'i PAN newsletter links to web sites maintained by other entities. Reasonable precautions are taken to link only to web sites which are appropriate, accurate and maintained by reputable organizations. However, those web pages are not under DOH control and DOH is not responsible for the information or opinions expressed in those linked sites. *If you believe that information obtained from the Hawai'i PAN Newsletter is inaccurate or out-of-date, please notify the Hawaii PAN Newsletter Contact: jessica.lee@doh.hawaii.gov.*