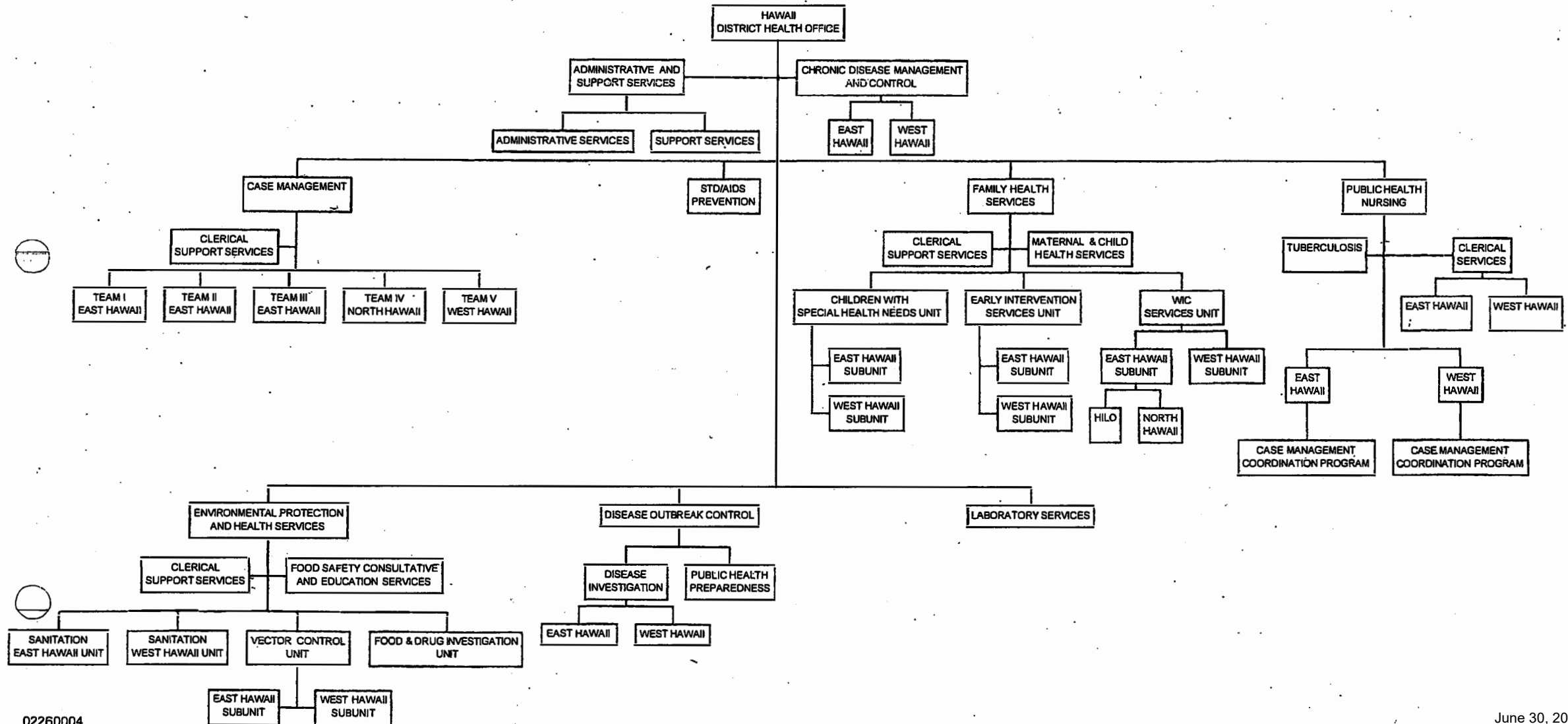
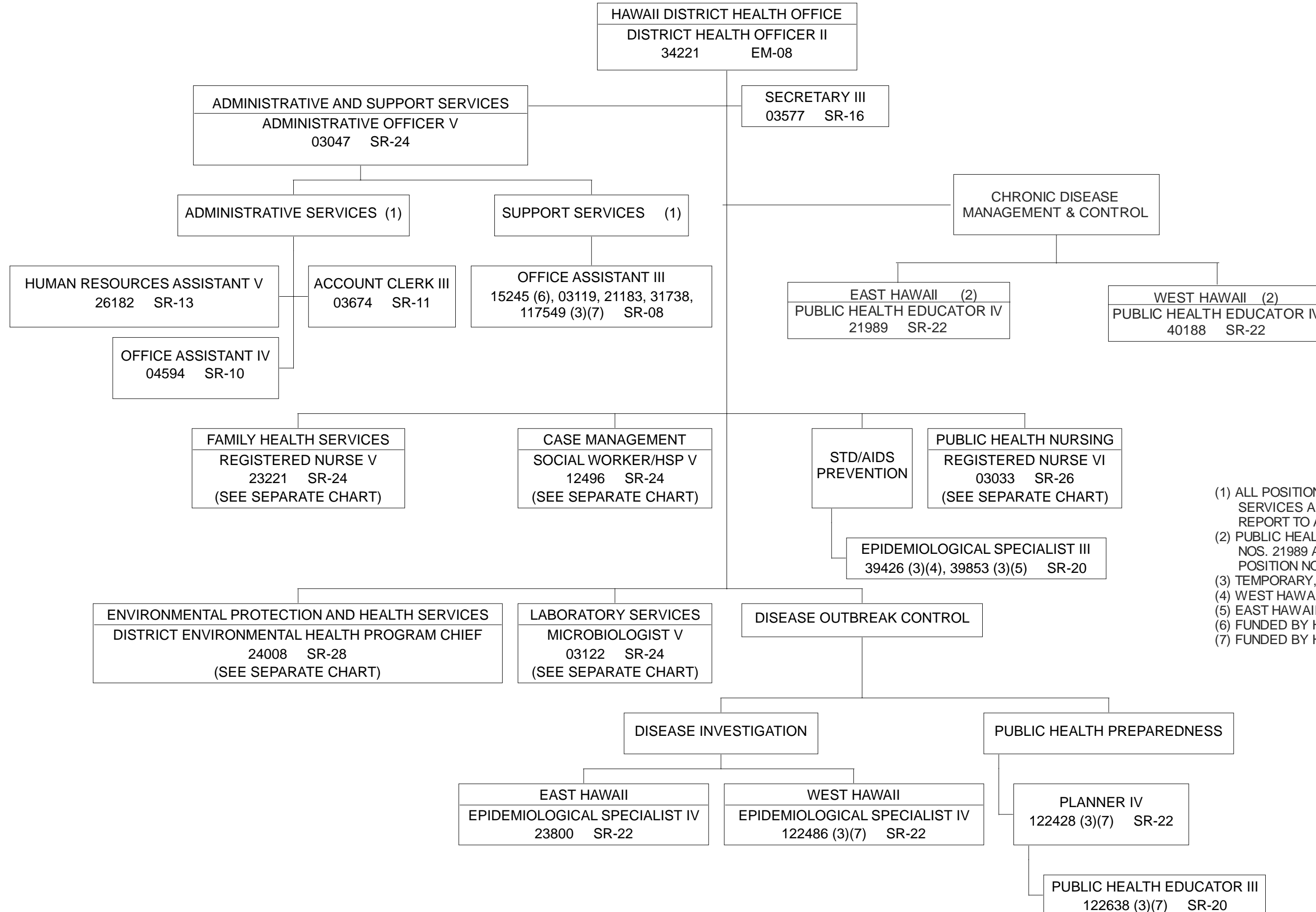


STATE OF HAWAII  
 DEPARTMENT OF HEALTH  
 OFFICE OF THE DEPUTY DIRECTOR OF HEALTH  
 HAWAII DISTRICT HEALTH OFFICE

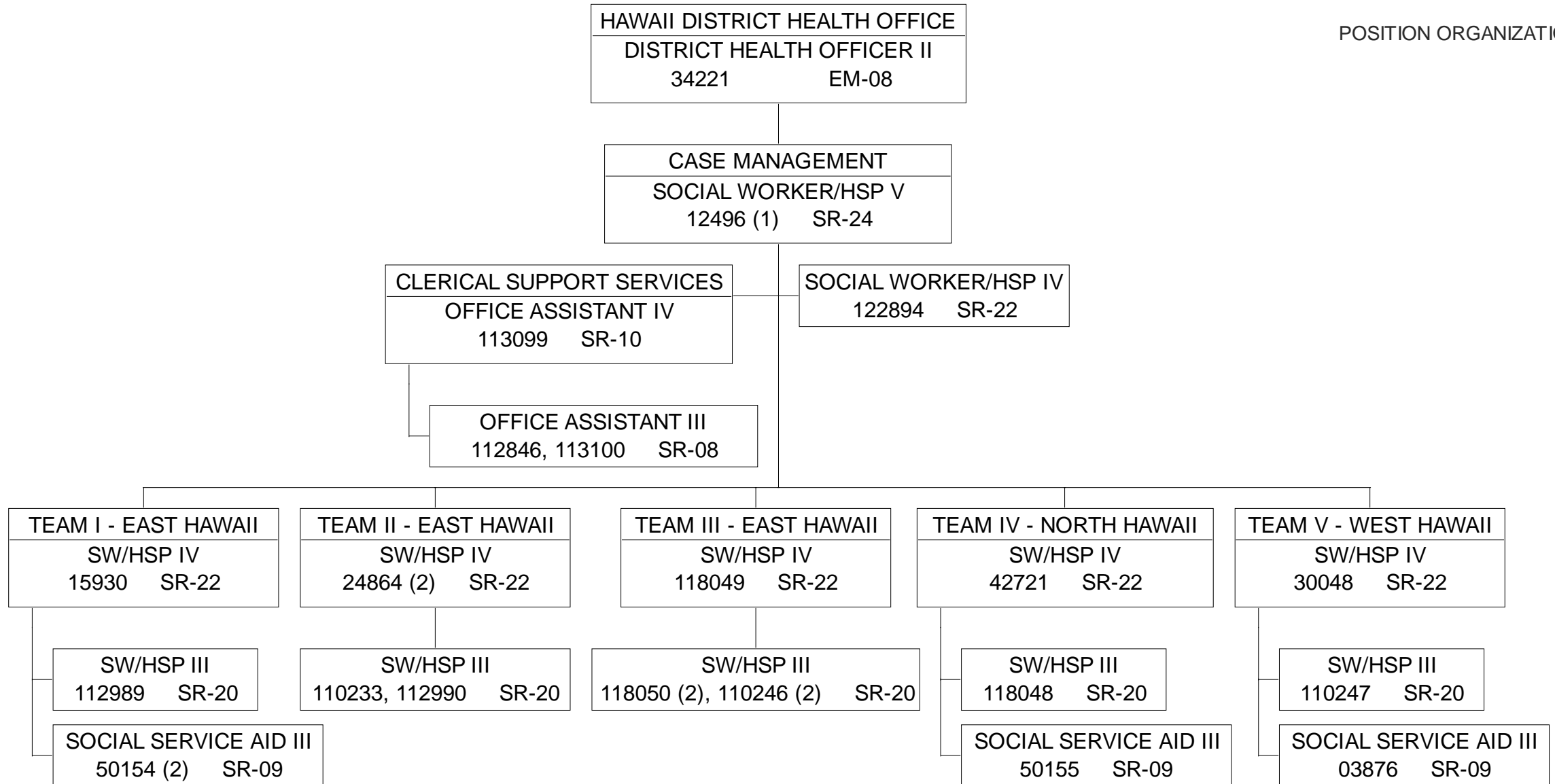
ORGANIZATION CHART



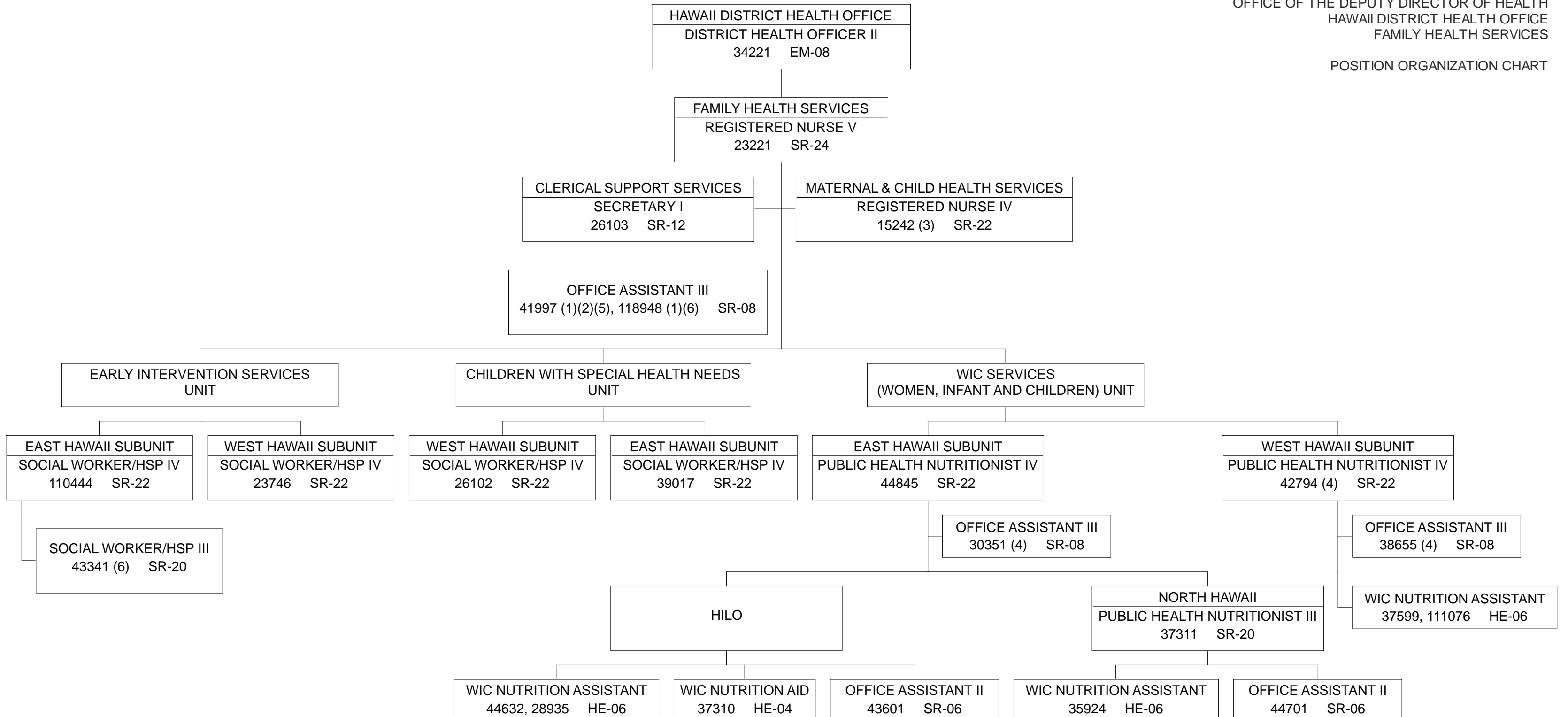


- (1) ALL POSITIONS UNDER ADMINISTRATIVE SERVICES AND SUPPORT SERVICES REPORT TO AO V. POS.NO. 03047.
- (2) PUBLIC HEALTH EDUCATOR IV, POSITION NOS. 21989 AND 40188 REPORT TO DHO II, POSITION NO. 34221.
- (3) TEMPORARY, NTE 6/30/23.
- (4) WEST HAWAII.
- (5) EAST HAWAII.
- (6) FUNDED BY HTH 560/CW.
- (7) FUNDED BY HTH 907/AK.

POSITION ORGANIZATION CHART

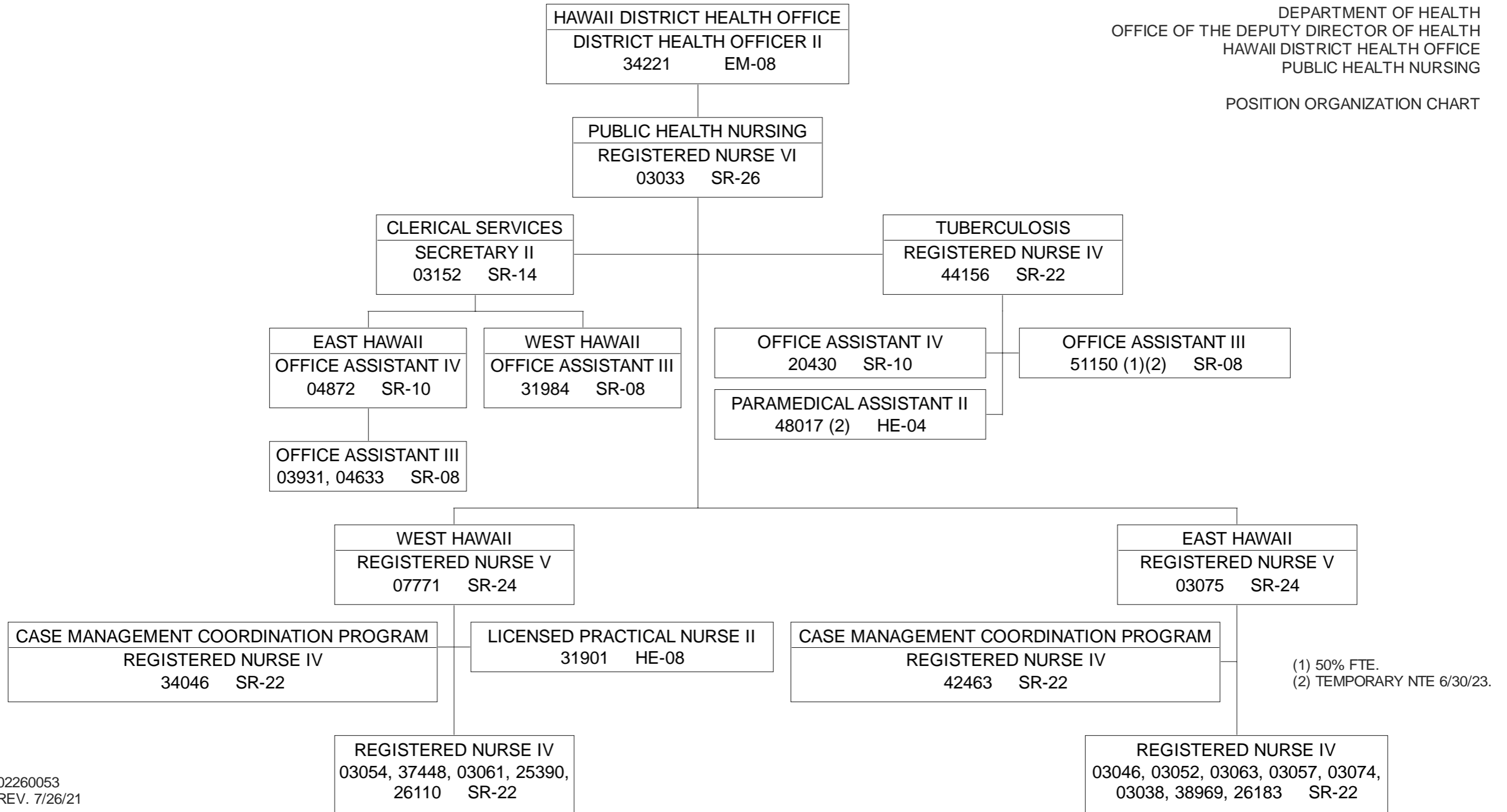


POSITION ORGANIZATION CHART

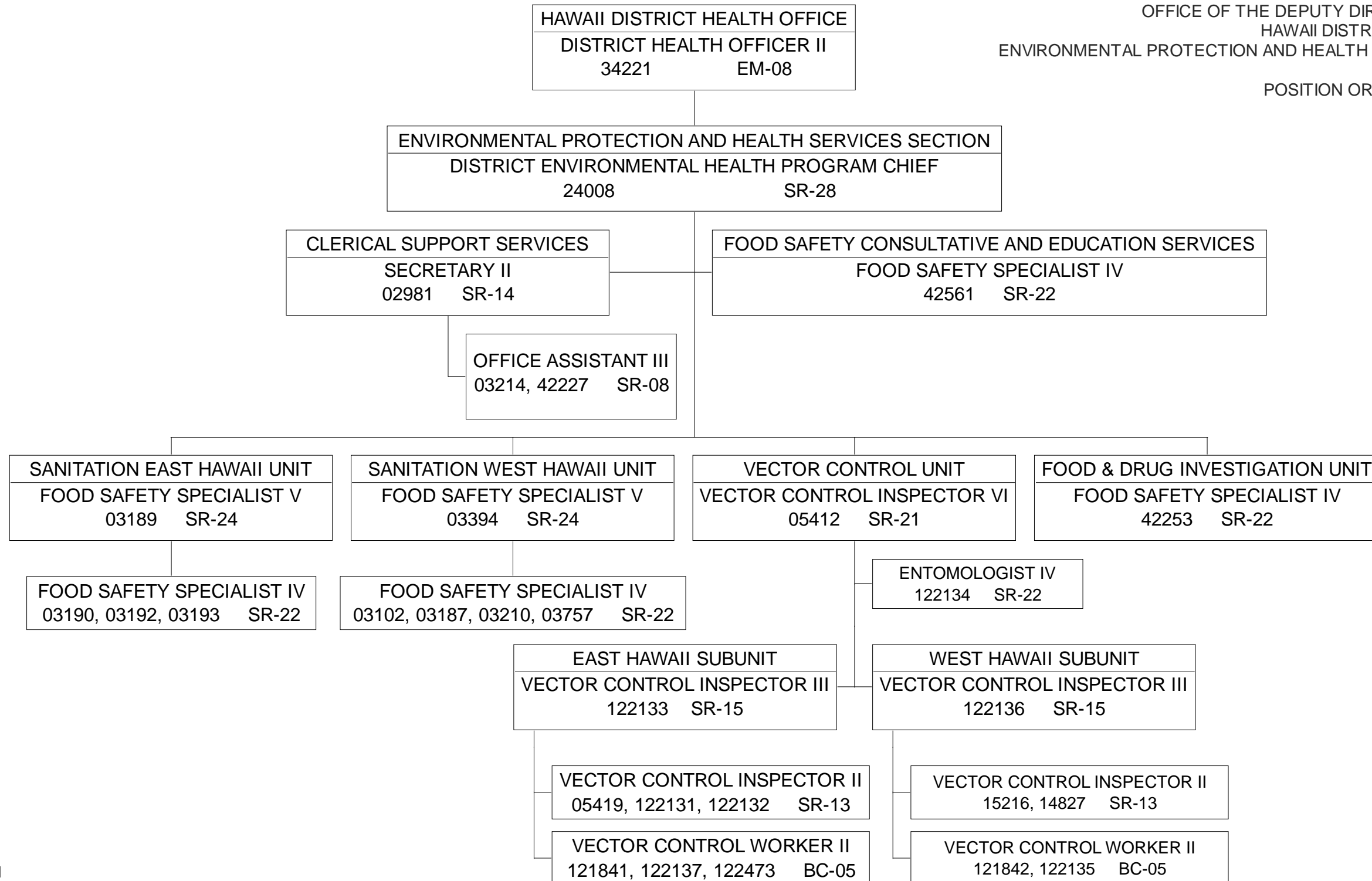


(1) 50% FTE.  
 (2) TEMPORARY, NTE 6/30/23.  
 (3) FUNDED BY HTH 560/CW.  
 (4) FUNDED BY HTH 560/GI.  
 (5) FUNDED BY HTH 560/CC.  
 (6) TO BE ABOLISHED PER ACT 9/SLH 2020

POSITION ORGANIZATION CHART



(1) 50% FTE.  
 (2) TEMPORARY NTE 6/30/23.



STATE OF HAWAII  
DEPARTMENT OF HEALTH  
OFFICE OF THE DEPUTY DIRECTOR OF HEALTH  
HAWAII DISTRICT HEALTH OFFICE  
LABORATORY SERVICES

POSITION ORGANIZATION CHART

