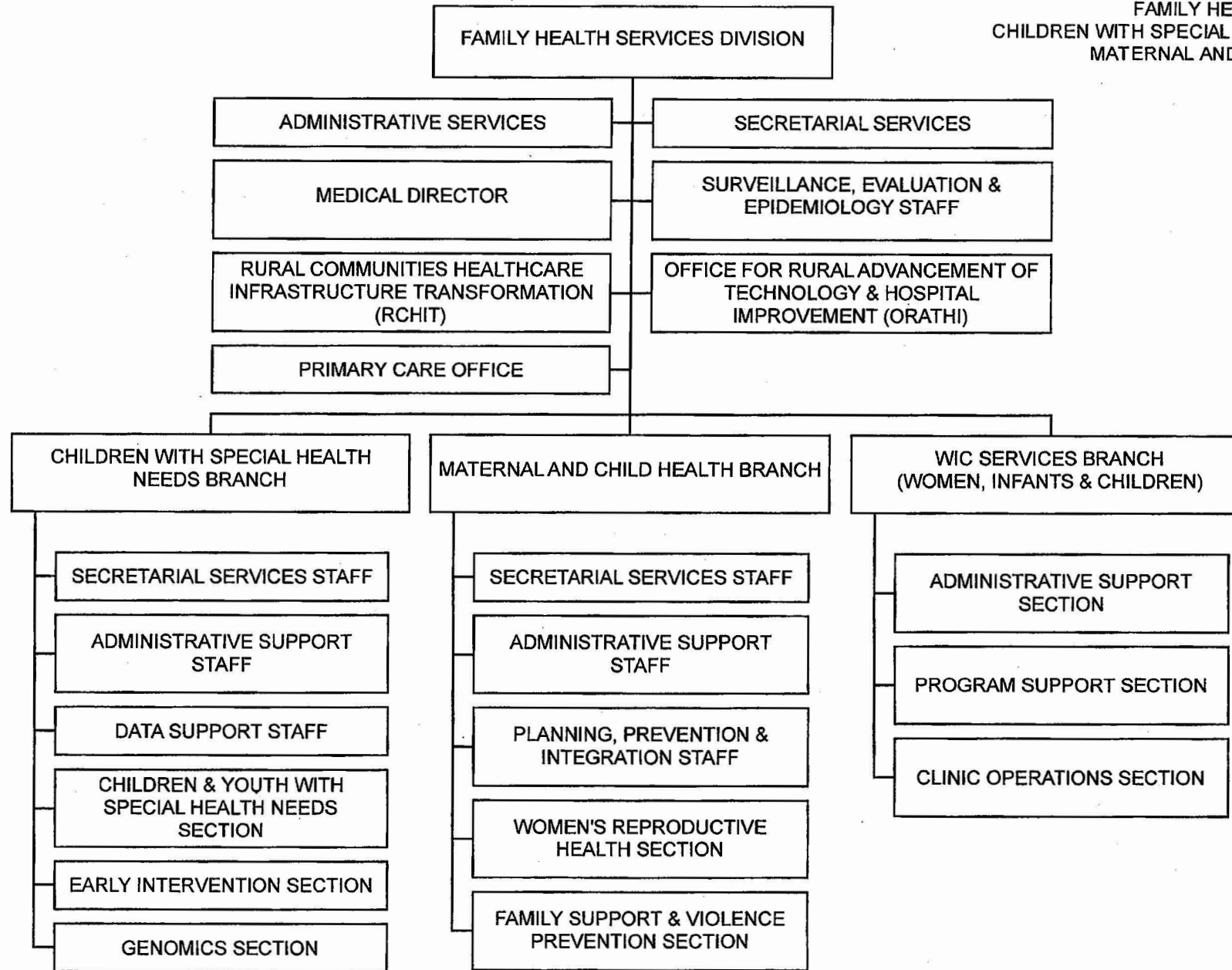
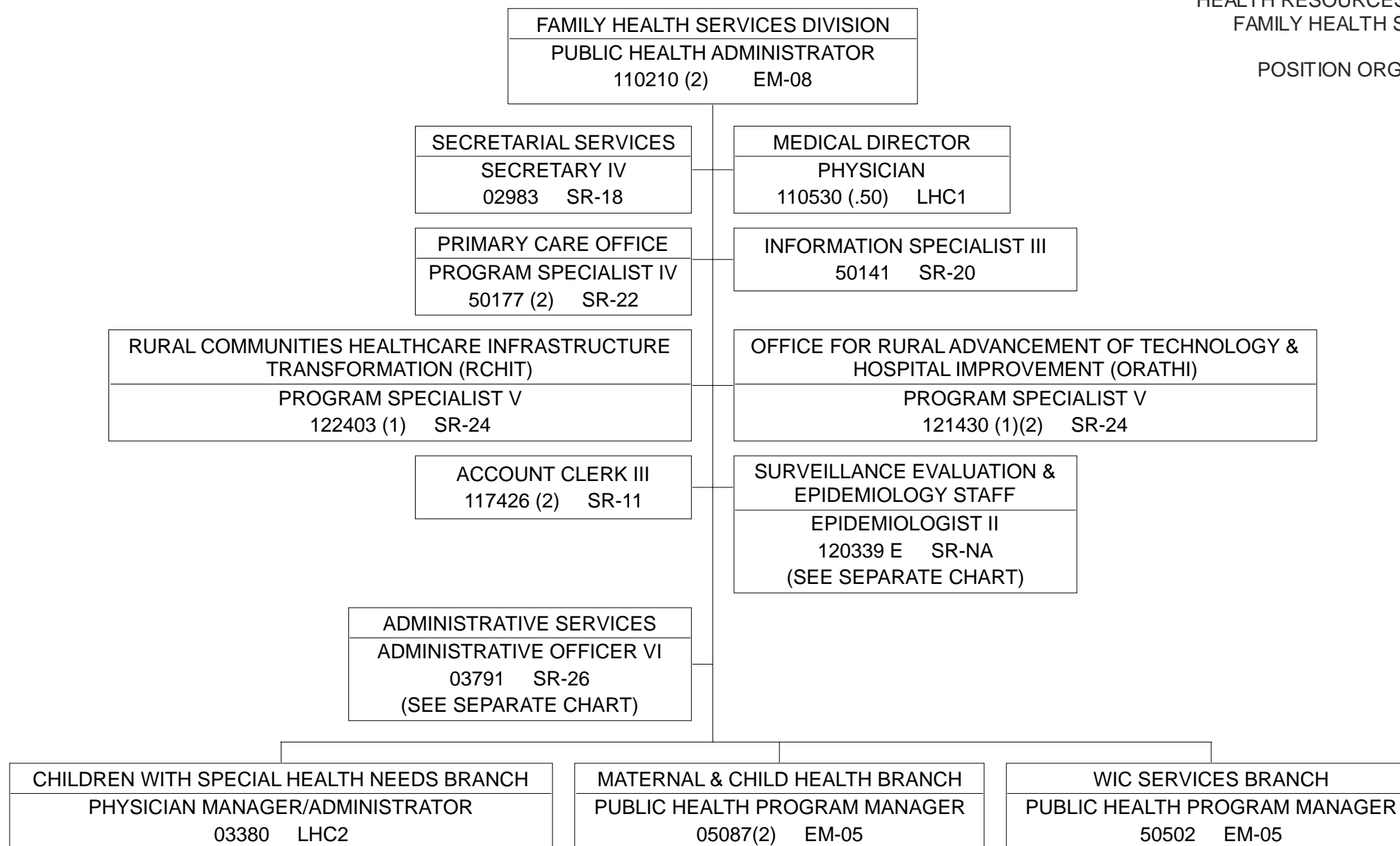


STATE OF HAWAII
 DEPARTMENT OF HEALTH
 HEALTH RESOURCES ADMINISTRATION
 FAMILY HEALTH SERVICES DIVISION
 CHILDREN WITH SPECIAL HEALTH NEEDS BRANCH
 MATERNAL AND CHILD HEALTH BRANCH
 WIC SERVICES BRANCH

ORGANIZATION CHART



POSITION ORGANIZATION CHART



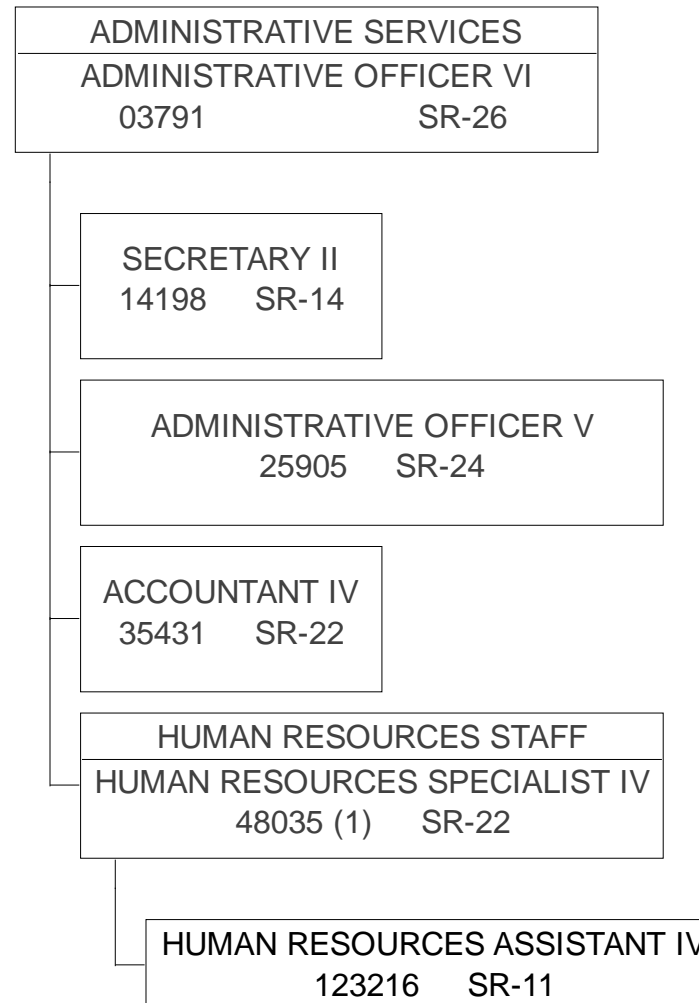
STATE OF HAWAII
DEPARTMENT OF HEALTH
HEALTH RESOURCES ADMINISTRATION
FAMILY HEALTH SERVICES DIVISION
ADMINISTRATIVE SERVICES

ORGANIZATION CHART



STATE OF HAWAII
DEPARTMENT OF HEALTH
HEALTH RESOURCES ADMINISTRATION
FAMILY HEALTH SERVICES DIVISION
ADMINISTRATIVE SERVICES

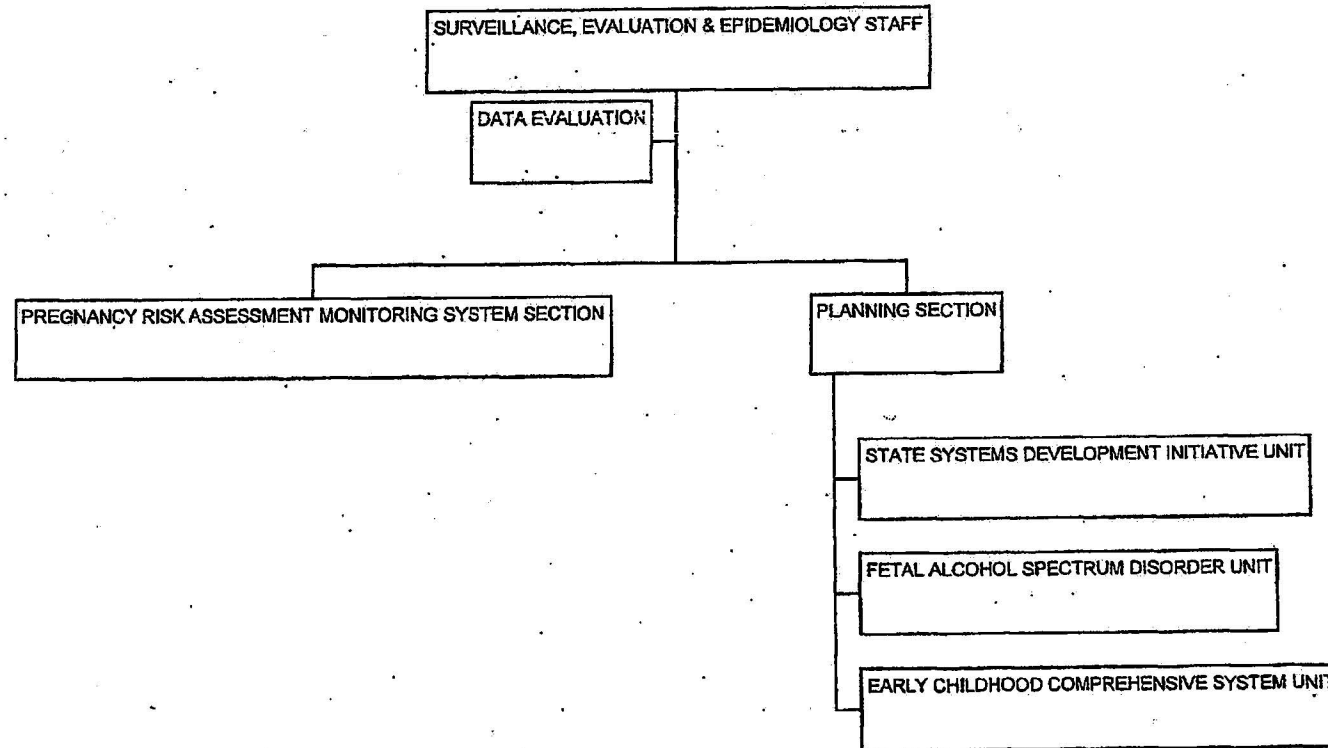
POSITION ORGANIZATION CHART



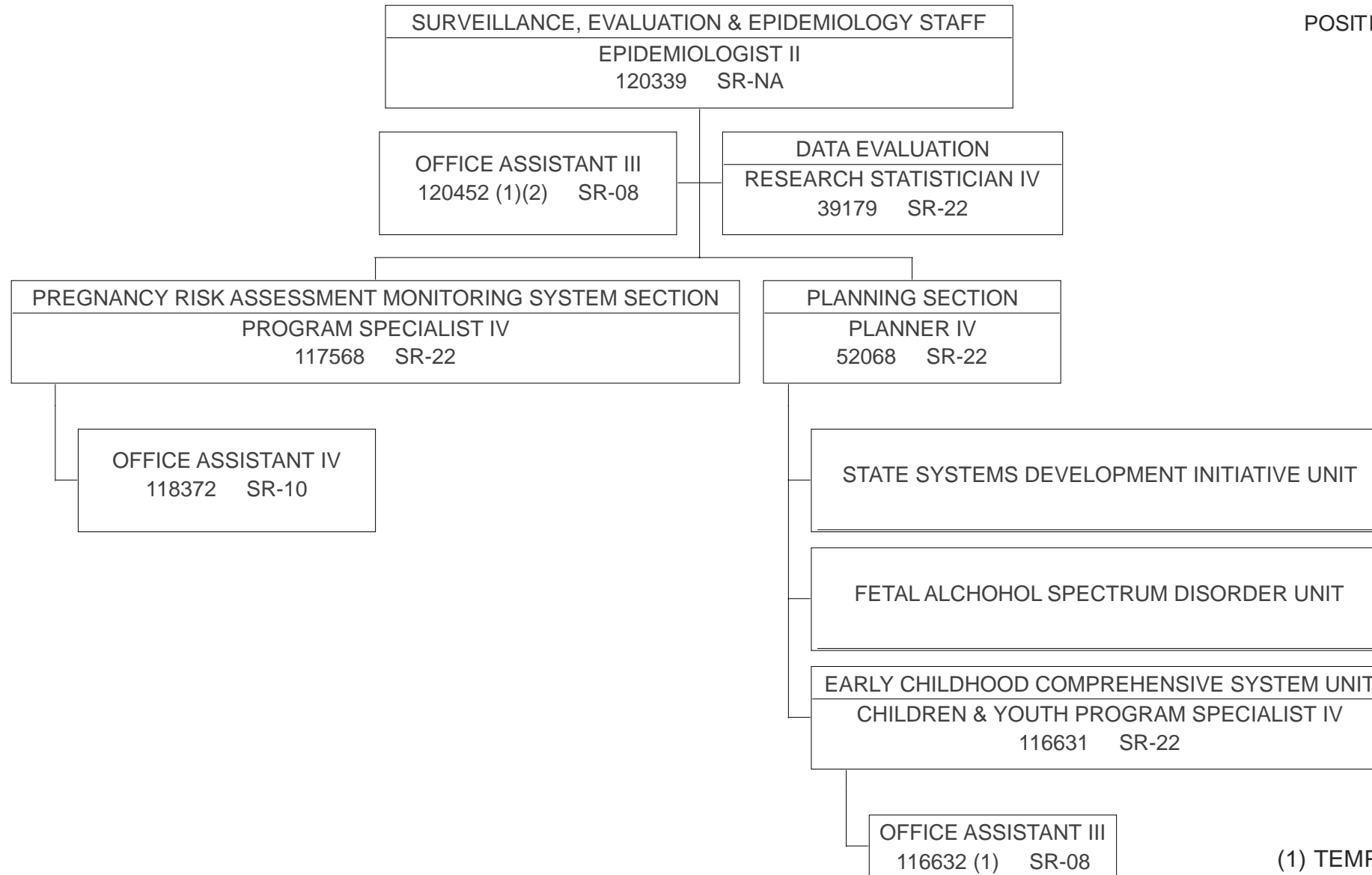
(1) TO BE REDESCRIBED.

STATE OF HAWAII
DEPARTMENT OF HEALTH
HEALTH RESOURCES ADMINISTRATION
FAMILY HEALTH SERVICES DIVISION
SURVEILLANCE, EVALUATION & EPIDEMIOLOGY STAFF

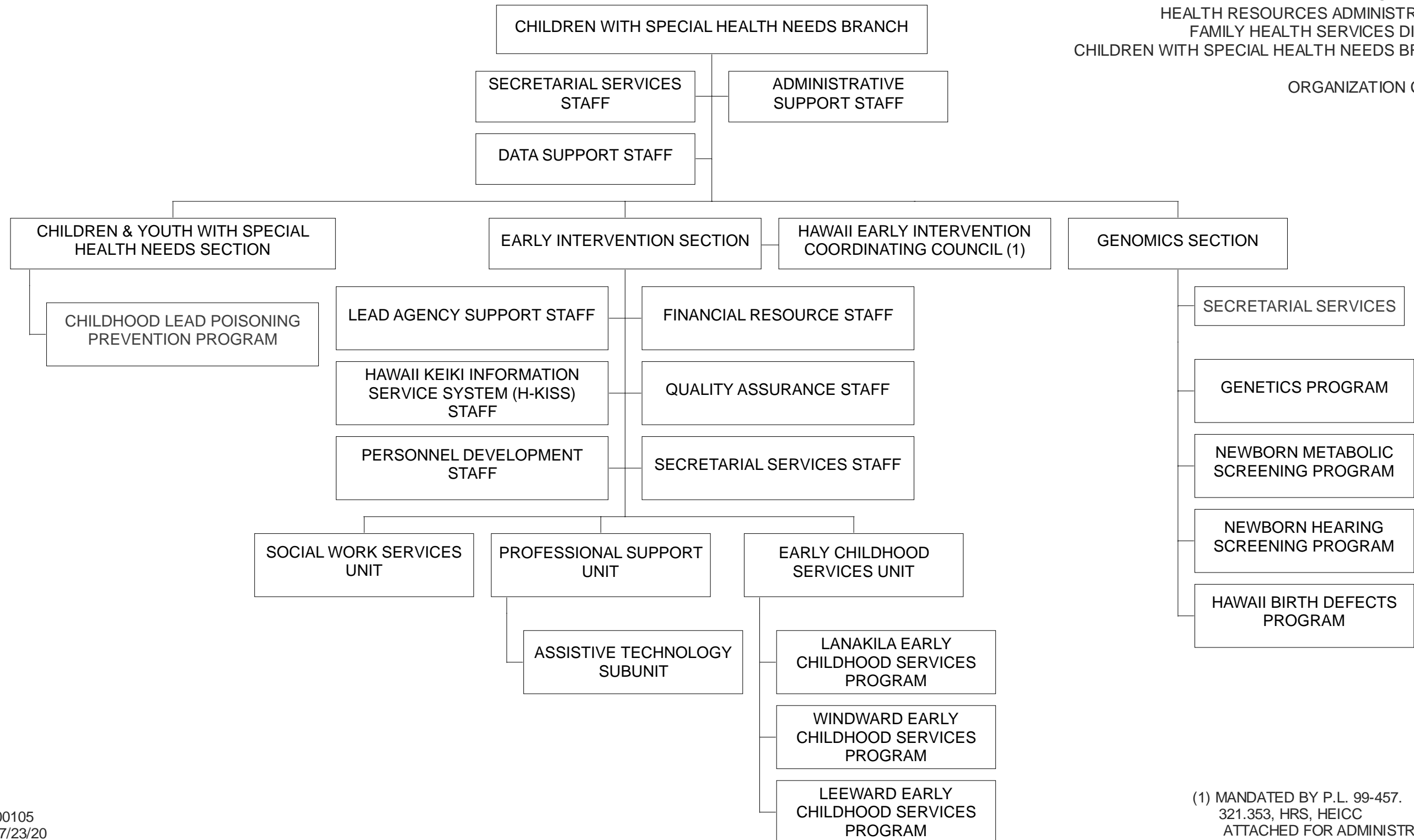
ORGANIZATION CHART



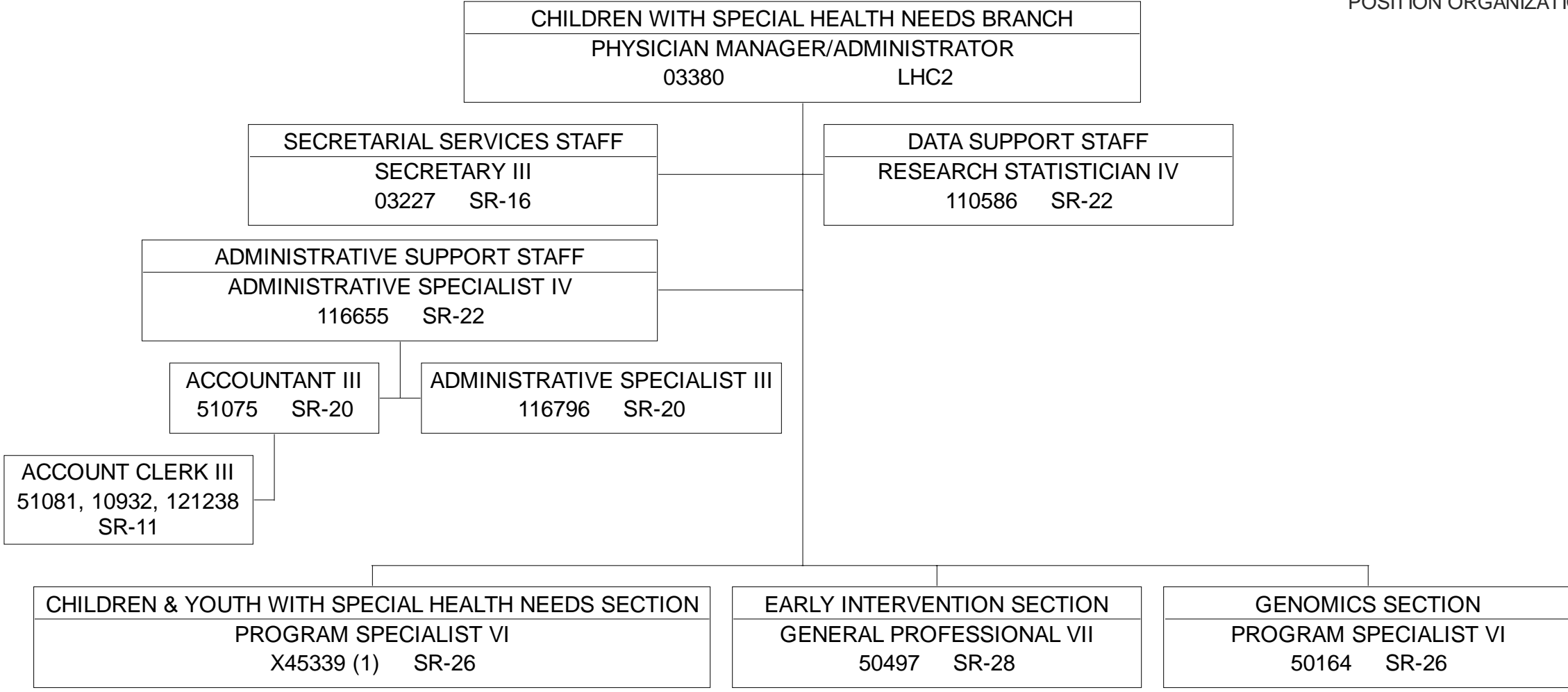
POSITION ORGANIZATION CHART



(1) TEMPORARY, NTE 6/30/23.
 (2) 0.50FTE



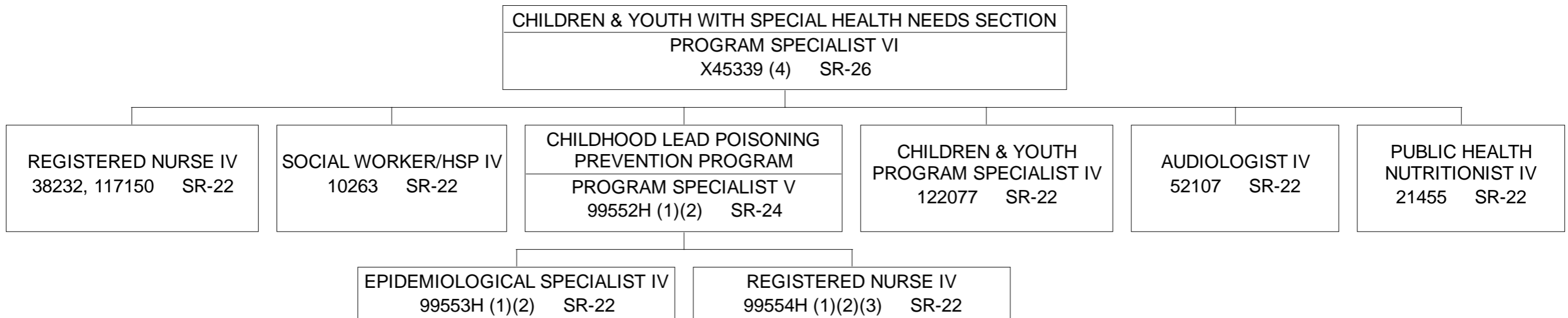
POSITION ORGANIZATION CHART



(1) PENDING ASSIGNMENT OF NEW PSTN# FOR APPROVED PSTN VARIANCE PER ACT 005/SLH2019, AS AMENDED BY ACT 009/SLH 2020.

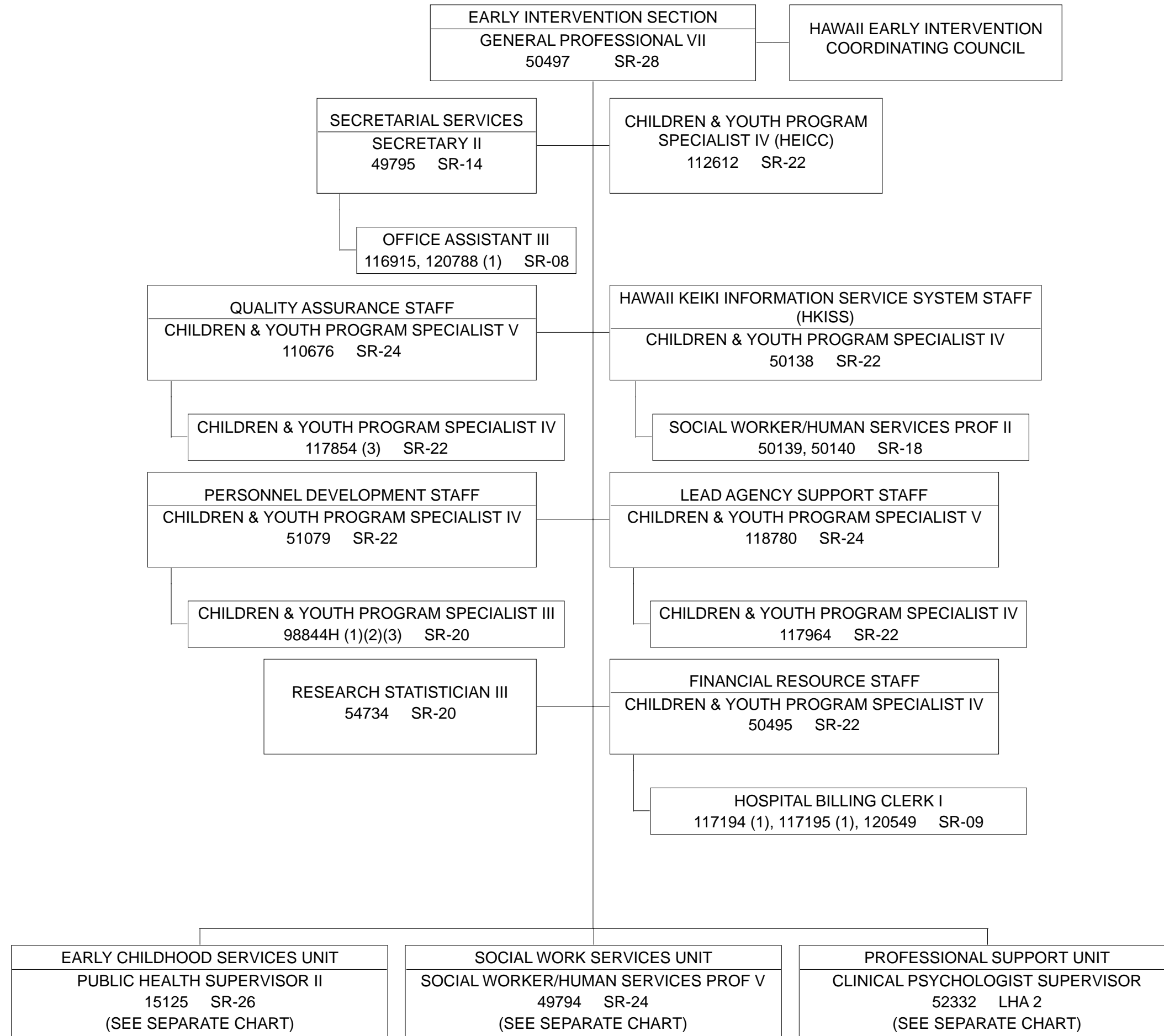
STATE OF HAWAII
 DEPARTMENT OF HEALTH
 HEALTH RESOURCES ADMINISTRATION
 FAMILY HEALTH SERVICES DIVISION
 CHILDREN WITH SPECIAL HEALTH NEEDS BRANCH
 CHILDREN & YOUTH WITH SPECIAL HEALTH NEEDS SECTION

POSITION ORGANIZATION CHART



(1) TO BE ESTABLISHED.
 (2) TEMPORARY, NTE 6/30/23
 (3) 0.5 FTE
 (4) PENDING ASSIGNMENT OF NEW PSTN# FOR
 APPROVED PSTN VARIANCE PER ACT 005/SLH2019 AS
 AMENDED BY ACT 009/SLH 2020.

POSITION ORGANIZATION CHART



(1) TEMPORARY, NTE 6/30/23.
 (2) TO BE ESTABLISHED.
 (3) TO BE ABOLISHED PER ACT 009/SLH 2020

POSITION ORGANIZATION CHART

EARLY CHILDHOOD SERVICES UNIT
 PUBLIC HEALTH SUPERVISOR II
 15125 SR-26

SPEECH PATHOLOGIST IV
 119201 (1) SR-22

LANAKILA EARLY CHILDHOOD SERVICES PROGRAM
 PUBLIC HEALTH SUPERVISOR I
 23952 SR-24

WINDWARD EARLY CHILDHOOD SERVICES PROGRAM
 PUBLIC HEALTH SUPERVISOR I
 23659 SR-24

LEEWARD EARLY CHILDHOOD SERVICES PROGRAM
 PUBLIC HEALTH SUPERVISOR I
 24799 SR-24

OFFICE ASSISTANT III
 26269, 111084 SR-08

SOCIAL WORKER/HUMAN SERVICES PROF IV
 26202 SR-22

SOCIAL WORKER/HUMAN SERVICES PROF III
 113002 (1) SR-20

SPEECH PATHOLOGIST IV
 50741, 50147, 119203 SR-22

OCCUPATIONAL THERAPIST III
 49805 SR-20

PHYSICAL THERAPIST III
 49806 SR-20

SPECIAL EDUCATION TEACHER III
 50150 SR-20

OFFICE ASSISTANT III
 24472, 111081 SR-08

SPECIAL EDUCATION TEACHER III
 50148 SR-20

SOCIAL WORKER/HUMAN SERVICES PROF IV
 26201 SR-22

SOCIAL WORKER/HUMAN SERVICES PROF III
 113001 (1), 113004 SR-20

SPEECH PATHOLOGIST IV
 110297, 118781 SR-22

PHYSICAL THERAPIST III
 50146 SR-20

OCCUPATIONAL THERAPIST III
 43079 SR-20

OFFICE ASSISTANT III
 25165, 111085 SR-08

SPECIAL EDUCATION TEACHER III
 112415, 122755 SR-20

SOCIAL WORKER/HUMAN SERVICES PROF IV
 24854 SR-22

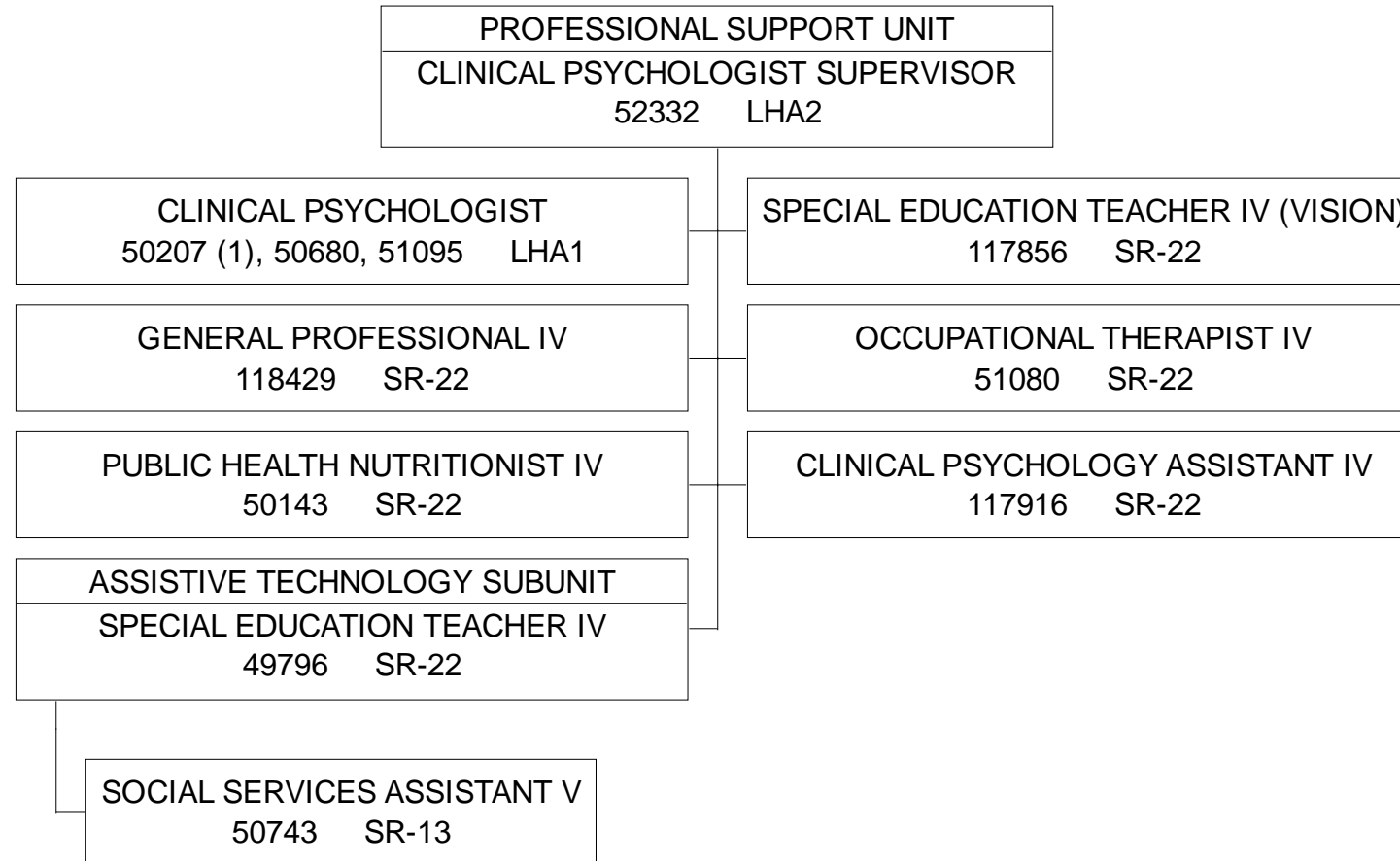
SOCIAL WORKER/HSP III
 113003, 113005 SR-20

SPEECH PATHOLOGIST IV
 112411, 119204 SR-22

PHYSICAL THERAPIST III
 50145 SR-20

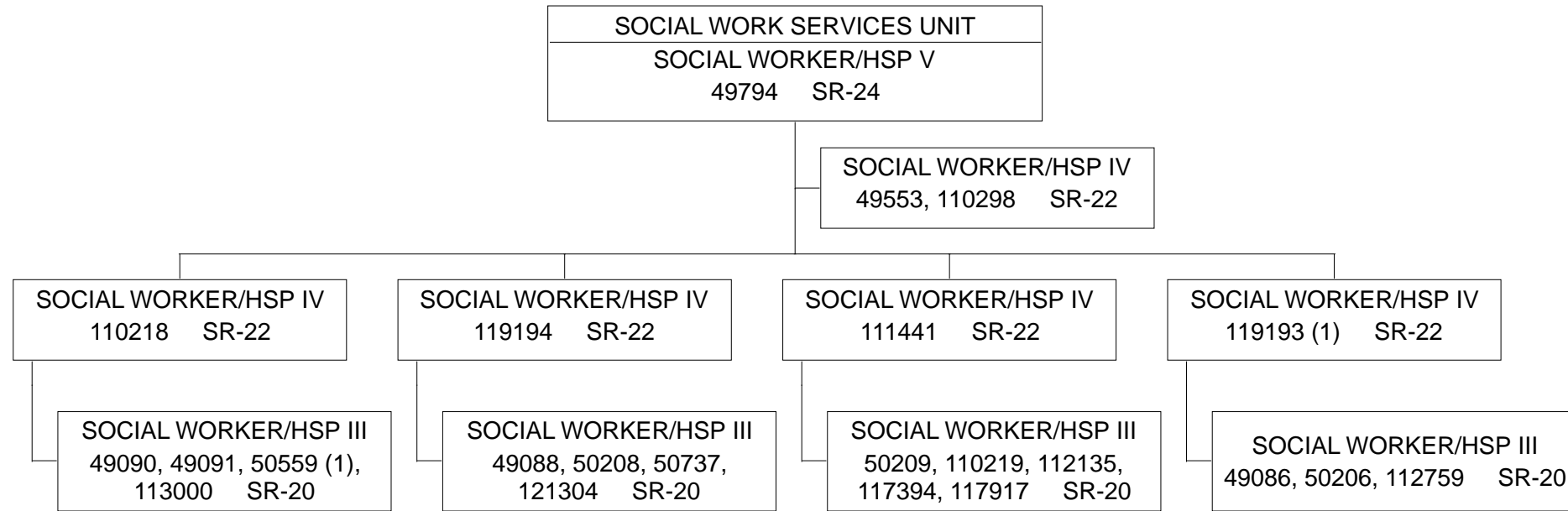
OCCUPATIONAL THERAPIST III
 33102, 112999 SR-20

POSITION ORGANIZATION CHART

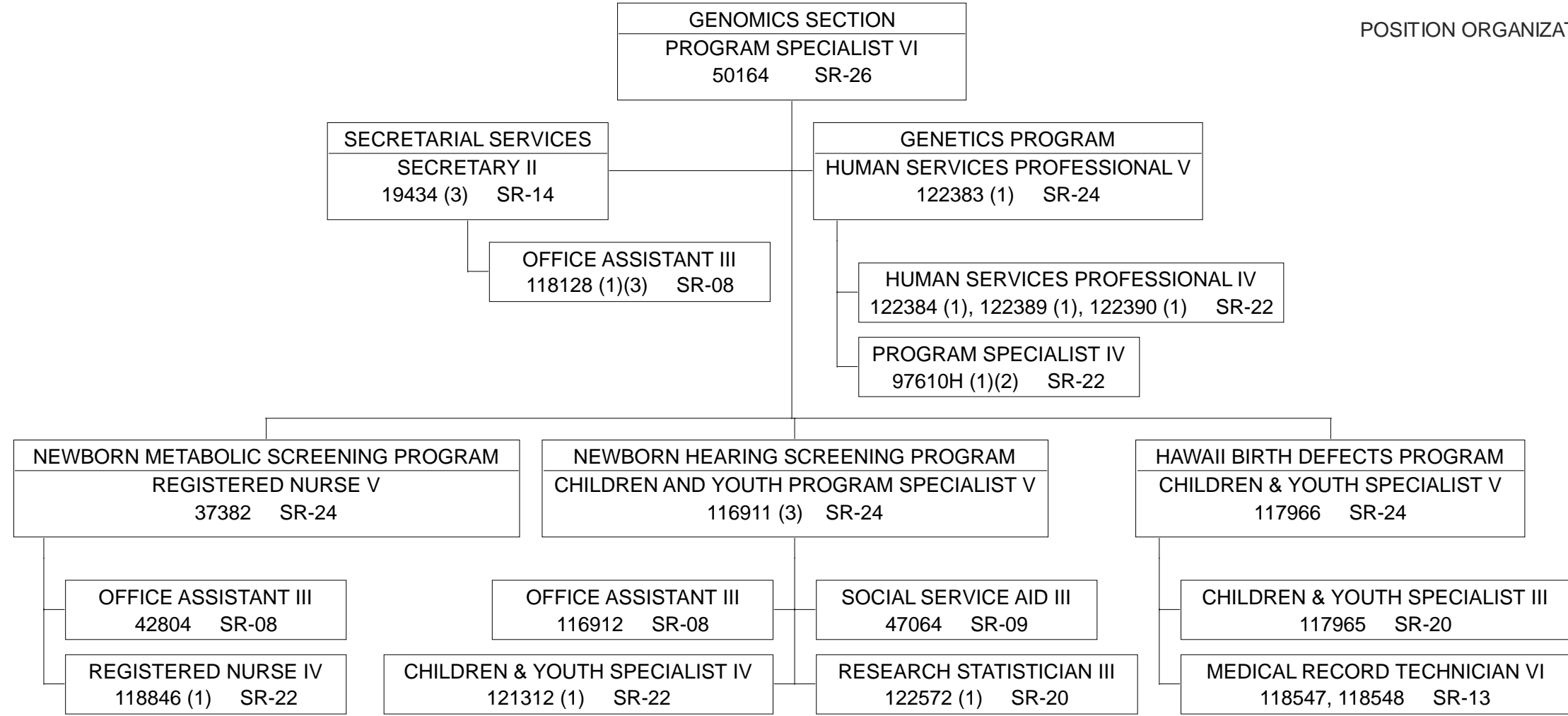


STATE OF HAWAII
 DEPARTMENT OF HEALTH
 HEALTH RESOURCES ADMINISTRATION
 FAMILY HEALTH SERVICES DIVISION
 CHILDREN WITH SPECIAL HEALTH NEEDS BRANCH
 EARLY INTERVENTION SECTION
 SOCIAL WORK SERVICES UNIT

POSITION ORGANIZATION CHART

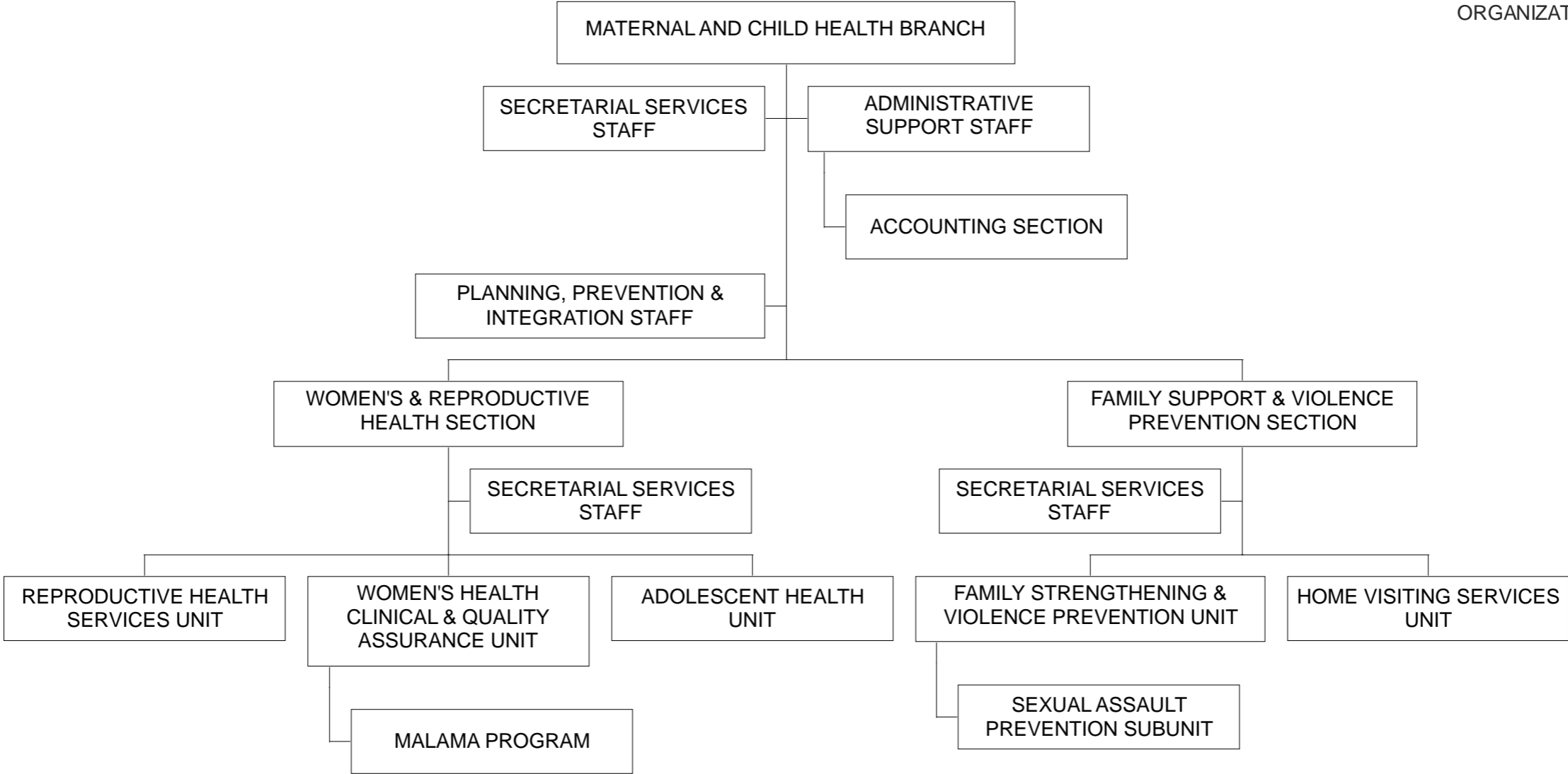


POSITION ORGANIZATION CHART

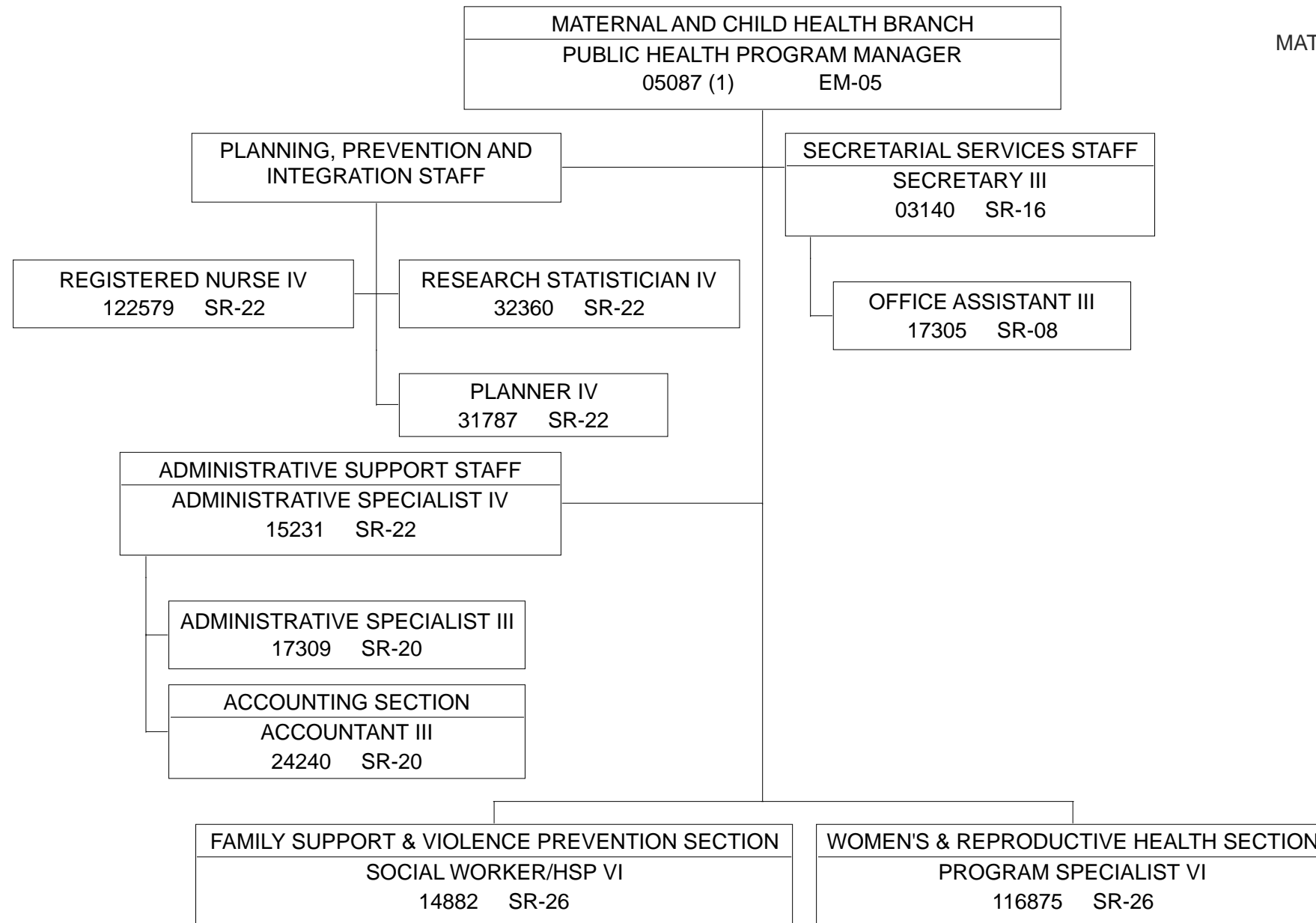


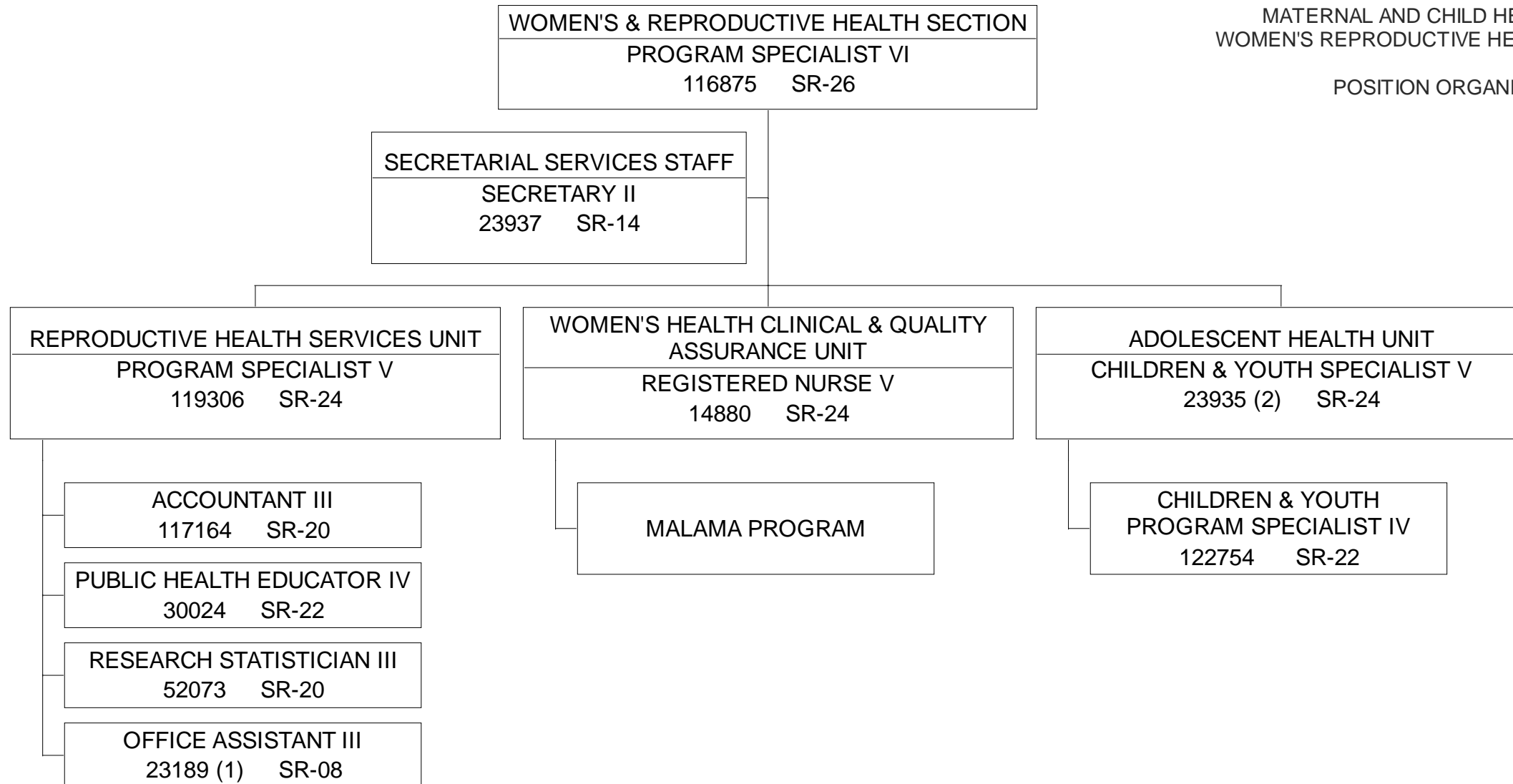
(1) TEMPORARY, NTE 6/30/23.
 (2) TO BE ESTABLISHED
 (3) TO BE REDESCRIBED

ORGANIZATION CHART

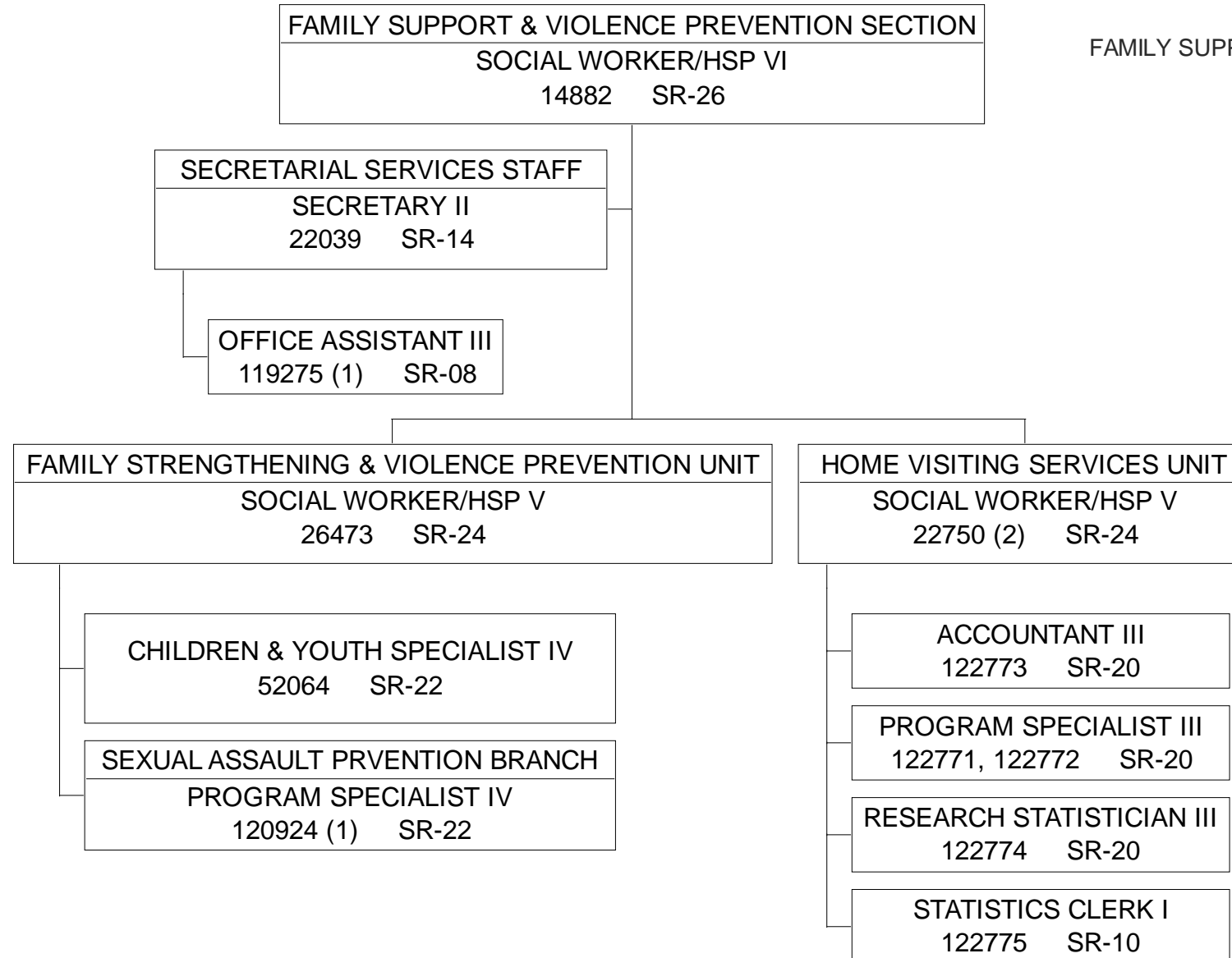


POSITION ORGANIZATION CHART





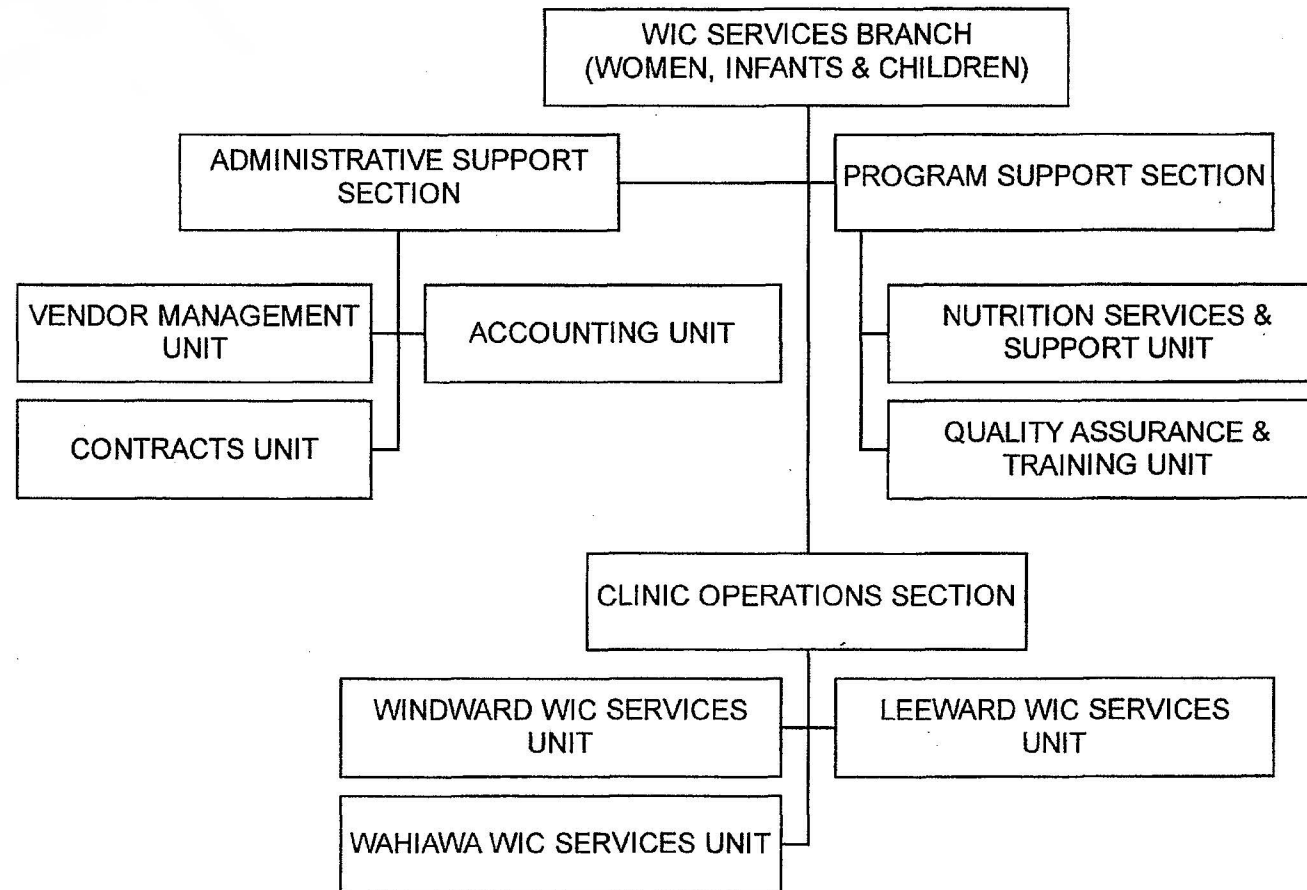
(1) TEMPORARY, NTE 6/30/23.
 (2) TO BE REDESCRIBED.



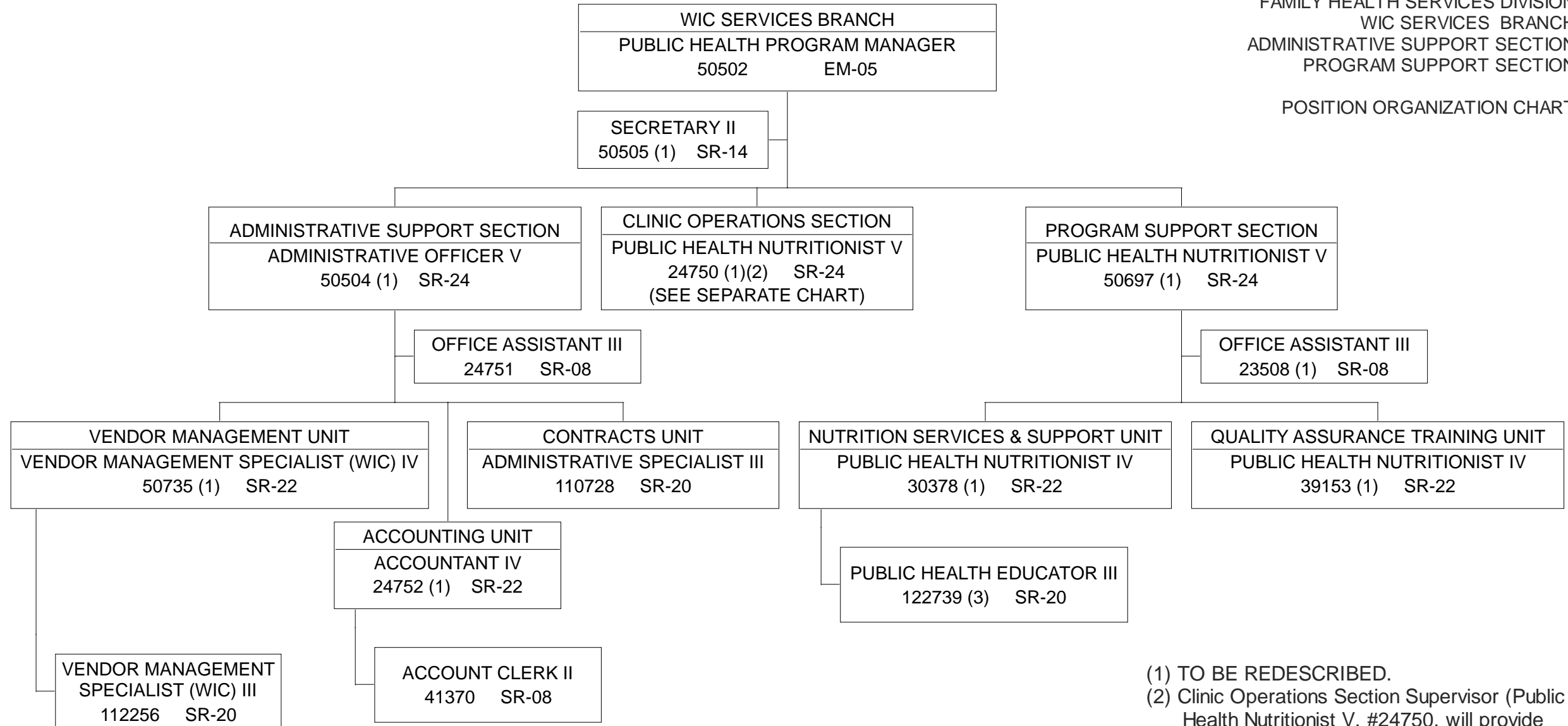
(1) TEMPORARY, NTE 6/30/23.
 (2) TO BE REDESCRIBED.

STATE OF HAWAII
DEPARTMENT OF HEALTH
HEALTH RESOURCES ADMINISTRATION
FAMILY HEALTH SERVICES DIVISION
WIC SERVICES BRANCH

ORGANIZATION CHART



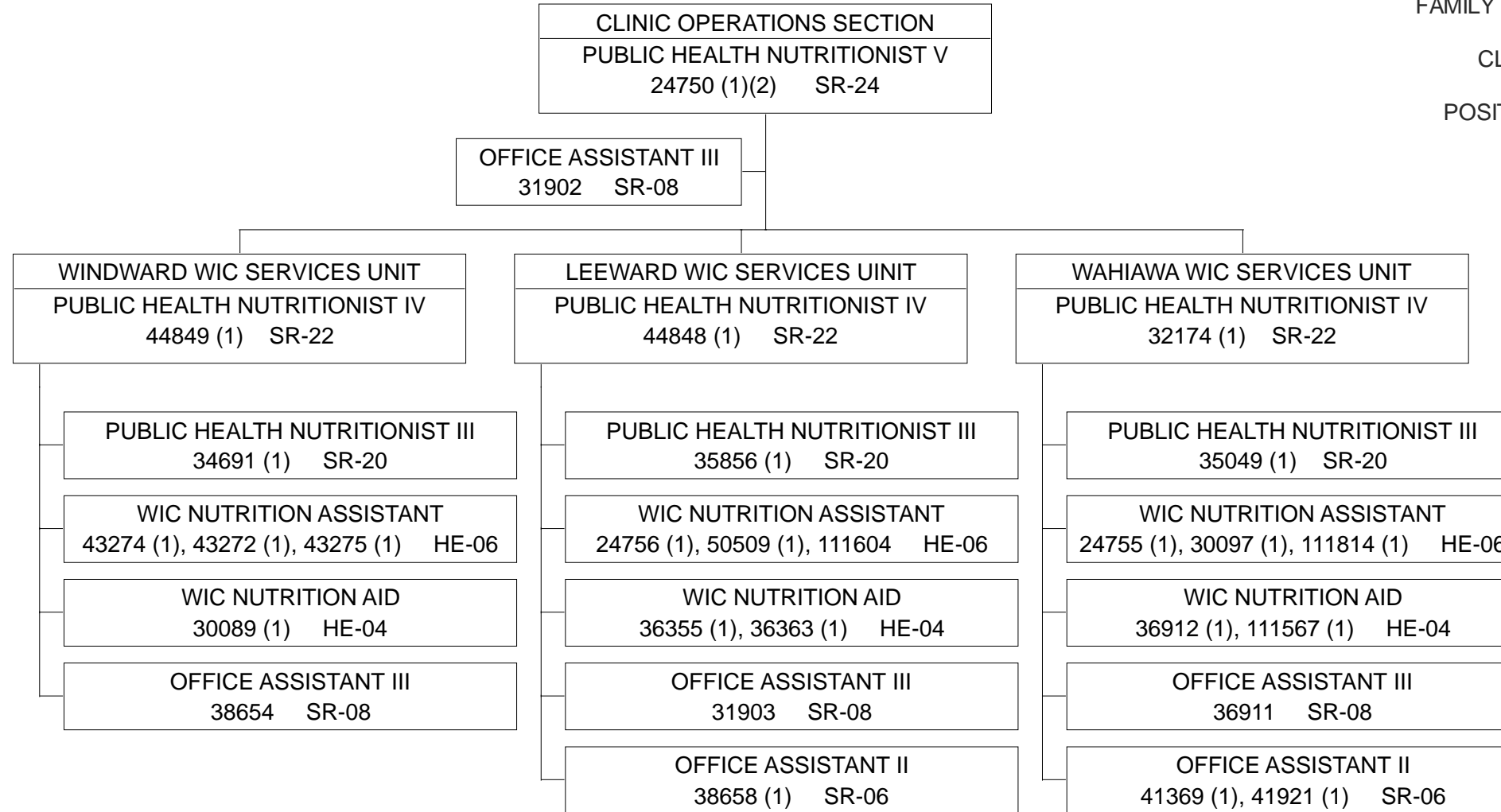
POSITION ORGANIZATION CHART



- (1) TO BE REDESCRIBED.
- (2) Clinic Operations Section Supervisor (Public Health Nutritionist V, #24750, will provide technical supervision via Public Health Nutritionist IV's in each District Health Office (Hawaii, Maui, Kauai WIC Services).
- (3) TEMPORARY, NTE 6/30/23.

STATE OF HAWAII
 DEPARTMENT OF HEALTH
 HEALTH RESOURCES ADMINISTRATION
 FAMILY HEALTH SERVICES DIVISION
 WIC SERVICES BRANCH
 CLINIC OPERATIONS SECTION

POSITION ORGANIZATION CHART



(1) TO BE REDESCRIBED.
 (2) Clinic Operations Section Supervisor
 (Public Health Nutritionist V, #24750),
 will supervise WIC Services via
 Public Health Nutritionist IV's in each
 District Health Office (Hawaii, Maui, Kauai).