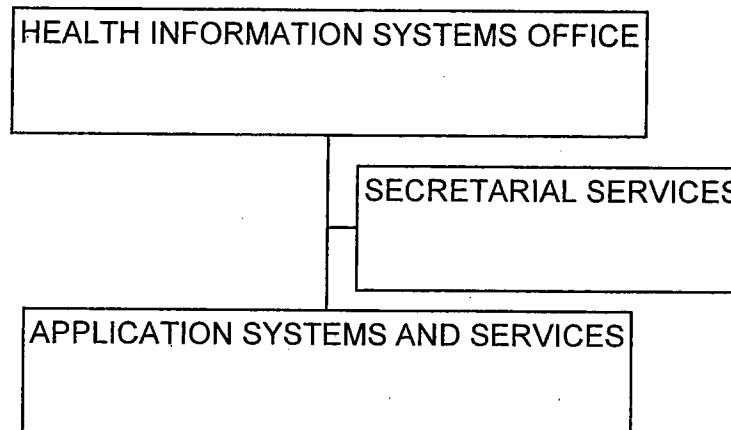


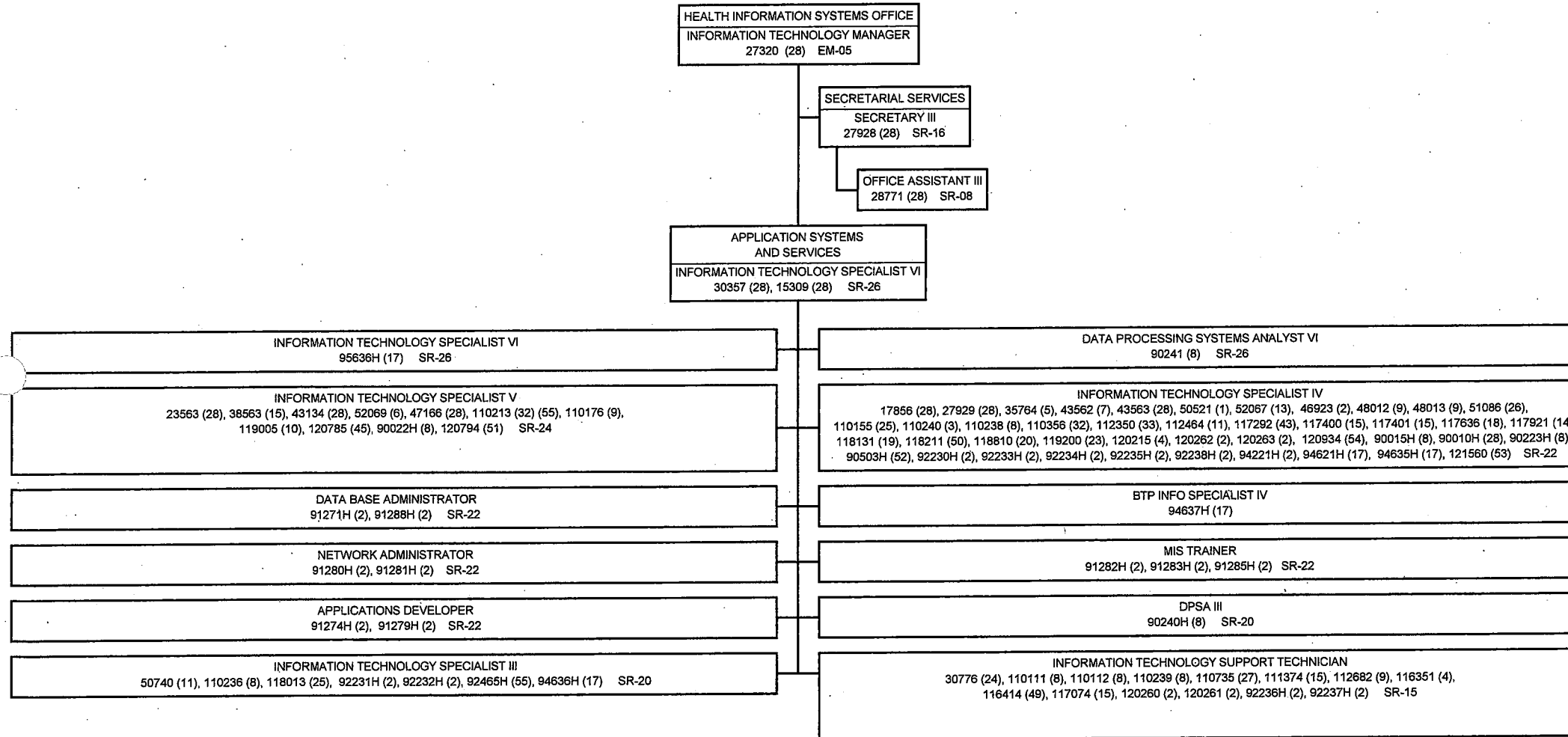
STATE OF HAWAII
DEPARTMENT OF HEALTH
OFFICE OF THE DEPUTY DIRECTOR OF HEALTH
HEALTH INFORMATION SYSTEMS OFFICE

ORGANIZATION CHART



STATE OF HAWAII
DEPARTMENT OF HEALTH
OFFICE OF THE DEPUTY DIRECTOR OF HEALTH
HEALTH INFORMATION SYSTEMS OFFICE

POSITION ORGANIZATION CHART



- (1) BUDGETED IN HTH 840/FJ.
- (2) BUDGETED IN HTH 495/HB, NTE 6/30/17.
- (3) BUDGETED IN HTH 460/HF, NTE 6/30/17.
- (4) BUDGETED IN HTH 501/KB.
- (5) BUDGETED IN HTH 710/MH.
- (6) BUDGETED IN HTH 430/HQ.
- (7) BUDGETED IN HTH 907/AL.
- (8) BUDGETED IN HTH 460/HF.
- (9) BUDGETED IN HTH 560/GI.
- (10) BUDGETED IN HTH 710/MB.
- (11) BUDGETED IN HTH 560/CG.
- (12) BUDGETED IN HTH 580/KD.
- (13) BUDGETED IN HTH 131/DC.
- (14) BUDGETED IN HTH 501/JO, NTE 6/30/17.
- (15) BUDGETED IN HTH 560/KC.
- (16) BUDGETED IN HTH 440/HD (50%) NTE 6/30/17.
- (17) BUDGETED IN HTH 131/DB, NTE 6/30/17.
- (18) BUDGETED IN HTH 840/FF.
- (19) BUDGETED IN HTH 760/MS, NTE 6/30/17.
- (20) BUDGETED IN HTH 710/MG.
- (23) BUDGETED IN HTH 720/MP.
- (24) BUDGETED IN HTH 100/KJ.
- (25) BUDGETED IN HTH 610/FL.
- (26) BUDGETED IN HTH 840/FF.
- (27) BUDGETED IN HTH 590/GQ, NTE 6/30/17.
- (28) BUDGETED IN HTH 907/AG.
- (29) BUDGETED IN HTH 501/CU, NTE 6/30/17.
- (32) BUDGETED IN HTH 840/FE.
- (33) BUDGETED IN HTH 840/FG.
- (43) BUDGETED IN HTH 840/FF.
- (45) BUDGETED IN HTH 907/AP, NTE 6/30/17.
- (49) BUDGETED IN HTH 131/DC, NTE 6/30/17.
- (50) BUDGETED IN HTH 440/HD.
- (51) BUDGETED IN HTH 131/DJ, NTE 6/30/17.
- (52) BUDGETED IN HTH 840/FJ, NTE 6/30/17.
- (53) BUDGETED IN HTH 907/AM.
- (54) BUDGETED IN HTH 907/AN.
- (55) BUDGETED IN HTH 501/KB, NTE 6/30/17.