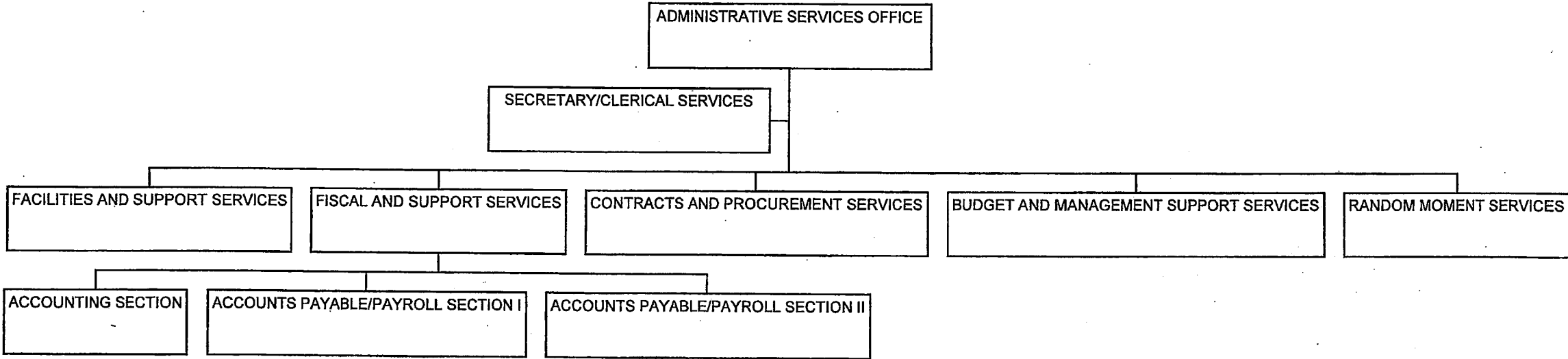


ACKNOWLEDGED:

Virginia Pressler
VIRGINIA PRESSLER, M.D., DIRECTOR
DEPARTMENT OF HEALTH

DATE: NOV 14 2016



STATE OF HAWAII
 DEPARTMENT OF HEALTH
 OFFICE OF THE DEPUTY DIRECTOR OF HEALTH
 ADMINISTRATIVE SERVICES OFFICE

POSITION ORGANIZATION CHART

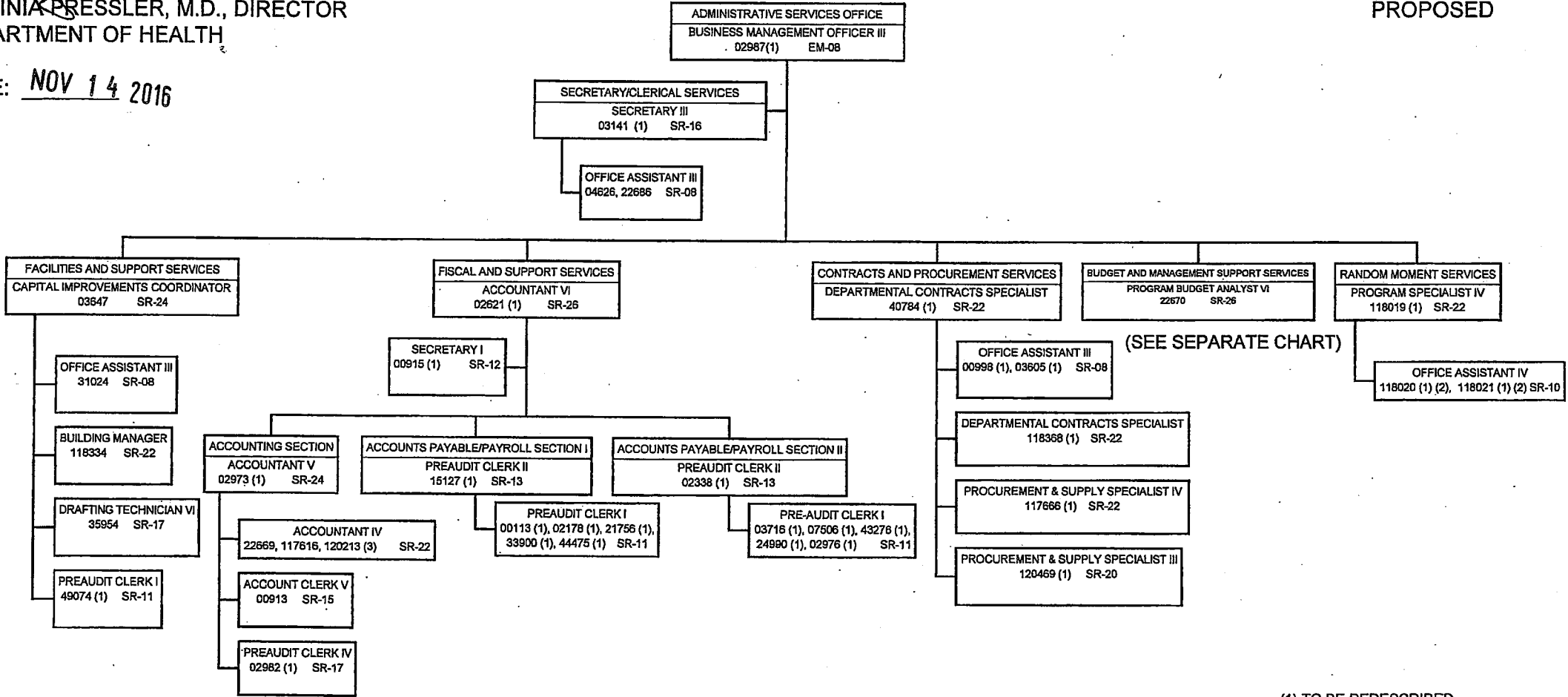
PROPOSED

ACKNOWLEDGED:

Virginia Pressler

VIRGINIA PRESSLER, M.D., DIRECTOR
 DEPARTMENT OF HEALTH

DATE: NOV 14 2016

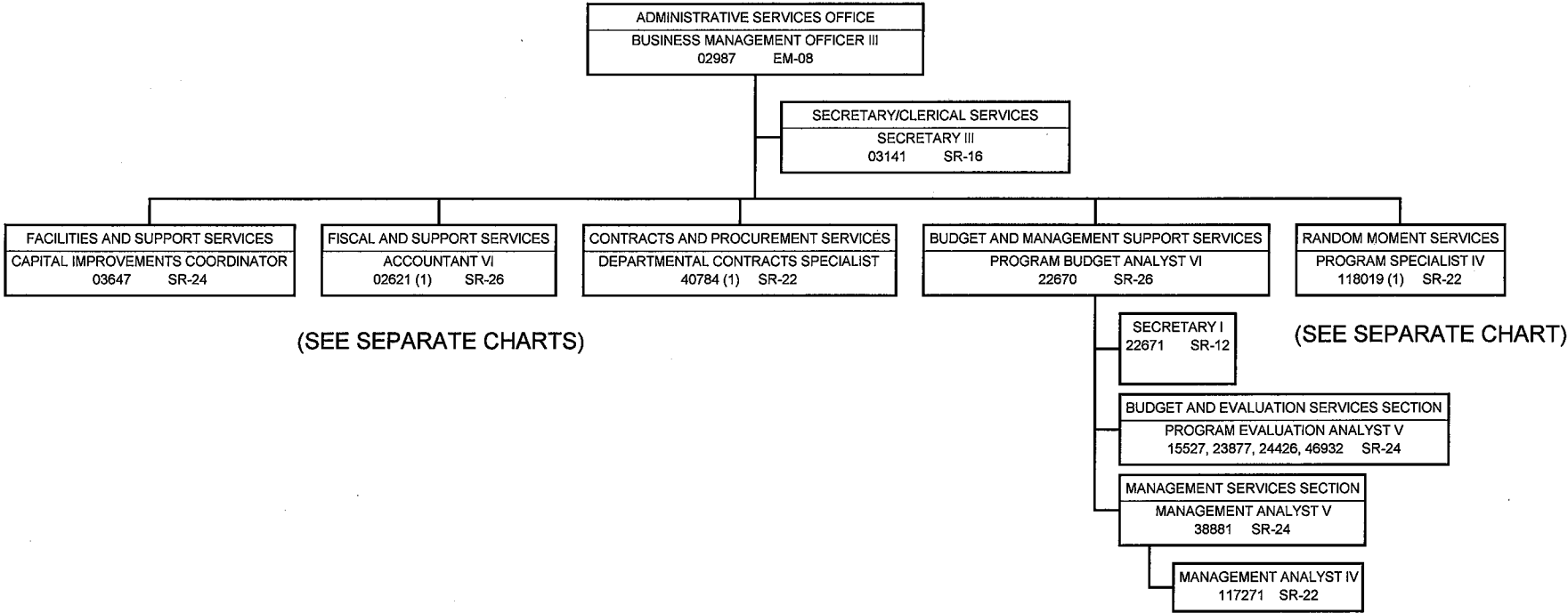


(SEE SEPARATE CHART)

(1) TO BE REDESCRIBED.
 (2) .75 FTE.
 (3) FUNDED BY HTH 840/FH. NOTE THAT EFFECTIVE
 7/1/13, POSITION (#120213) WILL BE BUDGETED IN
 HTH 849/FB AND FUNDED BY THE DWRLF AND
 CWRLF.

STATE OF HAWAII
 DEPARTMENT OF HEALTH
 OFFICE OF THE DEPUTY DIRECTOR OF HEALTH
 ADMINISTRATIVE SERVICES OFFICE

POSITION ORGANIZATION CHART



(SEE SEPARATE CHARTS)

(SEE SEPARATE CHART)

(1) TO BE REDESCRIBED.