

Hawaii's LEP Profile – DBEDTs' April 2016 Report: “Non-English Speaking Population in Hawaii”

http://dbedt.hawaii.gov/economic/reports_studies/non-english-speaking-population-in-hawaii/

http://files.hawaii.gov/dbedt/economic/data_reports/Non_English_Speaking_Population_in_Hawaii_April_2016.pdf

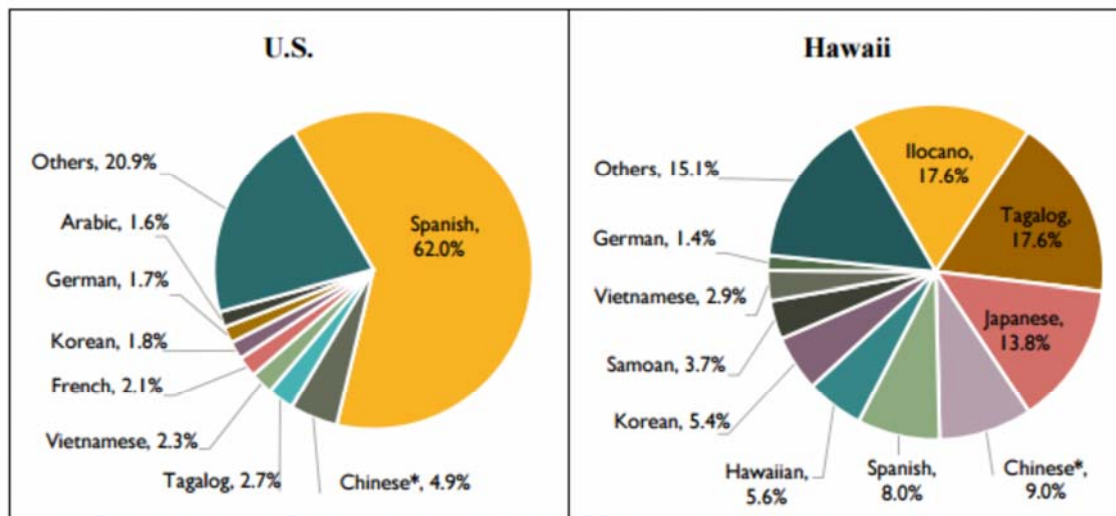
NON-ENGLISH SPEAKING POPULATION IN HAWAII

This report examines the non-English speaking population, people aged 5 and older who speak a language other than English at home, in Hawaii based on the language use data collected by the U.S. Census Bureau. The report looks at the historical trends and status of language use at home in Hawaii, and explores demographic and socioeconomic characteristics of the non-English speakers. It also identifies characteristics that were commonly associated with non-English speaking at home, and assesses the impacts of English proficiency on individuals' economic activities and earnings. Most statistics included in this report were based on the American Community Survey data collected for five years from 2010 to 2014.



Hawaii's LEP Profile – DBEDTs' April 2016 Report: “Non-English Speaking Population in Hawaii”

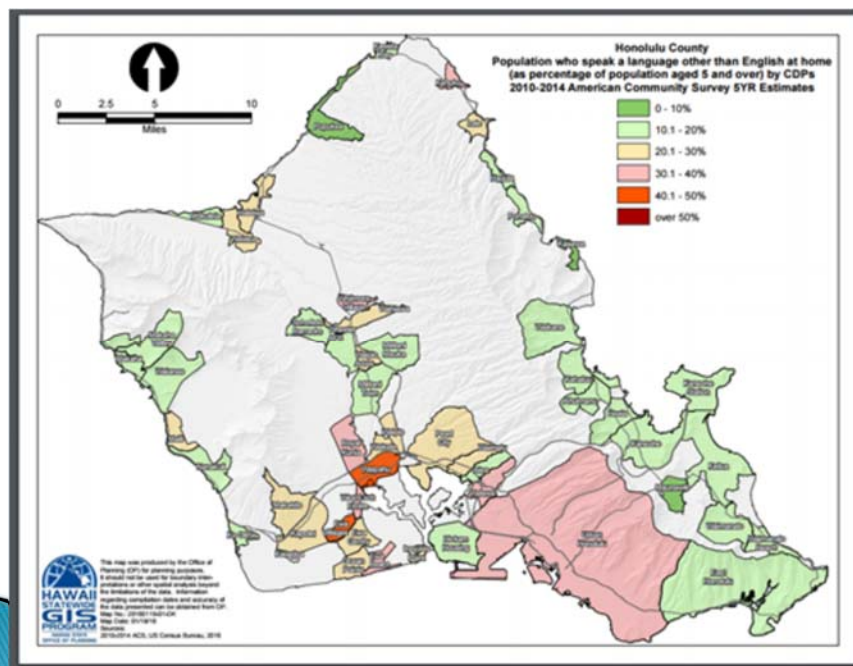
Figure 5. Languages other than English spoken at home: Hawaii vs. the U.S.



Source: National statistics: U.S. Census Bureau, ACS 2010-2014 5 year, table B16001,
Hawaii statistics are estimates by DBEDDT based on Public Use Microdata Sample of the 2010-2014 5 year ACS
*Chinese includes Mandarin, Cantonese and other Chinese languages



Hawaii's LEP Profile – DBEDTs' April 2016 Report: “Non-English Speaking Population in Hawaii”



Hawaii's LEP Profile – DBEDTs' April 2016 Report: “Non-English Speaking Population in Hawaii”

Major findings in the report are:

- About one-in-four Hawaii residents aged 5 and older spoke a language other than English at home in the 2010-2014 period.
- The number of non-English speakers at home in Hawaii increased by 44 percent from 1980 to 2014. As the total population in Hawaii grew at a similar rate during the period, the proportion of non-English speakers to the total population remained about the same.
- Non-English language speaking at home was more prevalent in Honolulu County than in the neighbor island counties. The proportion of non-English speakers was highest in Honolulu County at 28 percent and lowest in Hawaii County at 19 percent.
- Ilocano, Tagalog, and Japanese were the top three most common non-English languages spoken at home in Hawaii. Speakers of these three languages made up about half of non-English speakers at home in Hawaii.