

Please kōkua!

Be a Good Neighbor

Eight Tips For Medical Cannabis Use in Hawai'i

1 Use with Caution

Until you know how you react to cannabis, use less. Research on adverse risks or reactions may not be readily available for your specific condition. Don't use medical cannabis when nursing or pregnant unless advised to do so by your health care provider.

2 Don't Drive

Although medical cannabis is legal, driving under the influence of cannabis is illegal. You might get arrested or hurt yourself or someone else. So, ask a friend for a ride, call a cab, or take the bus.

3 Be Aware of Addiction

Although cannabis can be used as medicine, cannabis has the potential to be addicting. Be sure to discuss all risks and benefits with the doctor that is treating you.

4 No Public Use

All use of medical cannabis must be on private property. Do not use cannabis in your car while on the road, at work, at school or on school grounds, at the beach, at a park, on hiking trails, on a bus, or in any other public space. It is illegal to use or possess cannabis on any federally owned property such as military installations and national parks.

5 Prevent Accidental Misuse

Cannabis is medicine in Hawaii. Keep your medicine secured and away from children at all times. If someone you know ingests too much cannabis, call the Poison Help Line at 1-800-222-1222.

6 Secure Your Plants

If you have a personal grow site, be sure to keep your plants secure, not visible by neighbors, and not accessible by children.

7 Safe Travels

When you leave home, your medical cannabis must be in a sealed container and not visible to the public. Remember, you are not protected when you travel with medical cannabis interisland, between states, or in other countries.

8 Obey All of Hawai'i's No Smoking Laws

Laws that do not allow smoking or vaping in certain areas apply to the use of medical cannabis. Be mindful of others and never use medical cannabis in a manner that may endanger the health or well-being of another. Secondhand smoke is harmful. Never smoke near infants, children, or pregnant women.



STATE OF HAWAII
DEPARTMENT OF HEALTH
4348 Waiālae Avenue, #648
Honolulu, Hawaii 96816



Identification Tags **REQUIRED** for Medical Cannabis Plants

The Hawaii Administrative Rules (HAR) for Medical Cannabis was approved by the governor on July 6, 2015 with an effective date of July 18, 2015. As such, "The person who has been designated to cultivate cannabis shall have a legible identification tag, in a form and manner as determined by the department, on each cannabis plant being cultivated for the qualifying patient." (See, section 11-160-31(b), HAR.) Simply put, all registered patients and caregivers **MUST** place identification tags on each of their medical cannabis plants that **CLEARLY shows their 329 registration number and expiration date.**

How many plants can be tagged with the same Registration Number? An "adequate supply" for purposes of tagging means **TEN (10)** cannabis plants whether immature or mature, jointly possessed between a patient and a caregiver. **No more than TEN (10)** cannabis plants, at a single registered location, should be tagged with the same registration number and expiration date. (See, Act 041, House Bill 1488.) *****Effective June 29, 2017*****

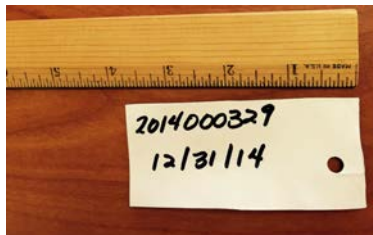
How/Where do I get the tags? Patients and caregivers must make OR purchase their own tags. The tag **MUST** meet the DOH guidelines. Acceptable tags are available for sale online OR can be made with items found in most hardware stores.

Where (on the plant) do I put the tag? The tag shall be hung from or around the bottom of each plant.

Guidelines for Proper Identification Tags:

1. **Tag Material/Durability** – Each tag shall be made of a durable water and weather resistant material.
2. **Tag Color**: Each tag shall be of **SOLID** color with black or blue lettering.
3. **Tag Face Size**: Each tag face shall be at least 3" long by 1/4" wide.
4. **Tag Location**: Each tag shall be hung from or around the bottom of the plant.
5. **Tag Visibility**: Each tag shall be easily visible from the outside of the plant.
6. **Tag Content**: Each tag shall be **CLEARLY** marked with the **329 registration number and expiration date.**
7. **Lettering**:
 - Shall be large and legible enough to be readable.
 - Shall remain readable if/when plant is subjected to watering or the elements. If any lettering on the tag becomes difficult to read then the tag shall be replaced immediately with the same registration number and expiration date.
8. **Updating Tags**: Tags shall be updated immediately upon issuance of a new registration card (i.e. renewal, change of information on card = reissue of card and a change of registration number) or anytime the tag contents are no longer legible.

EXAMPLES (tags below are made from items purchased at Walmart):



Waterproof Gorilla Tape (folded in half)



Waterproof Gorilla Tape (folded with solid color insert)



1/4" x 24" Cable Ties

WARNING: Untagged cannabis plants or improperly tagged cannabis plants (not meeting the above requirements) are subject to confiscation and removal by law enforcement, and the grower or property owner is not guaranteed the protections available in chapter 329, Hawaii Revised Statutes.