

Ma Pwacsin ke Apact ke E Luhlahp Maui



Muhtwacwacacn ma ma konweyuckyak ke apact ke e luhlahp sac ma orekeni e Kula tukun e luhlahp se sikyak ke August ah ahkkahlwemye lah arlac yohk luhpan ma sensen inge arsenic. Pwacye lah mwe srihasrak uh ahkkahlwemye lah yohkwelihk luhpan lead ac cobalt, tuhsruhktuh arsenic pa sensen emeet uh. Ma sensen ac fohfohk inge kuh in sremlac ke apact ac dust.

Apact inge orekeni ke September 21 liki lohmi alkosr ma fihrihyak e Kula. Lohmi inge muhsaiyucklac ke yac 1930 nuhke 2000 kuhtuh. Ke srihpen lohmi inge ma fihrihyak Lāhainā oreklac ke puhluhn pacl sefanna, ohfohs luhni Hawai'i Department luhni Health (DOH) luhlahlfongi lah ac oasr kain in ma pwacsin kuh fohfohk ke apact fin acn Lāhainā pac.



Mwet orekma luhni DOH oracni kuhtuh apact fin acn Kula.

Piyac kuhtuh sin ma pwacsin inge ma konweyuckyak kea pact fin acn Kula?

Arsenic pa sie kain in osra ma fokoko konweyuckyak ke fohkfohk ma tuhkuh ke volcano fin acn Hawai'i ac ingena oasr pac ke srihpen orekmakihnyuck oacna sie herbicide ke muhtwacwaciyen 1900 kuhtuh. Ma inge kuh in konweyuckyak pac ke kuhfwehn muhsah ma oreklac ke tuh (Canec) ac sahk ma onoiyuck ke termite control (CCA treated wood). [Arsenic kuh pac in konweyuckyak ke mongo oacna rais, ikwe, ik ac seaweed](#) ac konweyuckyak kwacna konweyuckyak pac pacl pucspucs ke kof in well fin facluh nohfohn. Fin arsenic puhsallac ac oan ke kulun mwet se ke pacl loeloes kuh kin pwacnacng kulun mwet sacn in oasr ke ongaiyac, mas e heart ac caner ke kolo, acn in kof luhni mwet se ac lungs luhni mwet se. Luhpan arsenic ke apact uh aralcna yohk ac oruh sie ma sensen nuhke moulu luhni mwet ma suun apact inge.

Lead pa sie osrah toasr ma luhlahlfongiyuck muh oasr in apact uh ke srihpen ma inge orekmakihnyuck ke ono in sraili lohmi ma muhsaiyucklac meet liki 1978. Lead arlacna pwacsin nuhsin tuhlihk srihsrihk ac ahwowo ma srack on in inisyacn inac se mweyen e ahkkulukye kapwack ke brain luhni tuhlihk sac. Ahwowo ac tuhlihk srihsrihk ma puhsrallah kuh suun lead tiac kuh in lotelah wo ma uh, orekma wo ke lutlut, lohacng wo ke ma uh, ac kuhtuh pac ongaiyac sahyac nuhtke mwe nuhnak lal. Luhpan lead ma oan in apact uh arlacna yohk ac sie ma sensen nuhsin tuhlihk srihsrihk ac muhtwacn pihtuhtuh ma suun apact ac dust ke acn ma fihrihyak uh.

Cobalt pa sie ma ma pahngpahng element ma enwenweyuck tuh kais kuhtuh orekma in ahkfahsryeyuck ke monun mwet se weacng in oraclah red blood cell. Mwet uh eis kuhtuh srihsrihk cobalt luun mongo, ke fohkfohklahn yen engyeng uh, ac ke mwe naweyuck pucspucs (cosmetics). Tuhsruhktuh, ke pacl se ma mwe uh suun luhpa yohk ke cobalt, ma inge kuh na in oraclah mas ke srah, lungs ac kulun mwet se. Cobalt kuh pacna in oraclah cancer fin yohk na pwacye luhpa me kom suun.

In eis ma sasuc, som nuhke health.hawaii.gov/mauiwildfires



Ma Pwacsin ke Apact ke E Luhlahp Maui



Ma sensen yohk emeet pa fin kom kangla apact.



Mokeack apact kuh pac in orek.



Kom kuh pac in fototyng nuhke apact fin kulum suun ma inge.

Taran Kom In Tiac Suun Apact Ke E Luhlahp Sac



Insracli pacl nuhkewa ac elah fin ma uh kuh in karingihn fin ma uh ke lohm sum in wacngihn dust kuh apact ma tuhkuh liki acn ma e orek we.



Tuhlihk srihsrihk uh enenuh in tiac srihtacl likinuhm fototo nuke acn ma oasr apact we.



Mwet pihutuhtuh, tuhlihk srihsrihk, mwet ma mwesen kidney, ac mwet ma tiac kuh in orekmakihn PPE enenuh in tiac som nuhke acn ma fihrihyak ah.



Liyacng in tiac oruh orekma in lihiklihk, lafwihs, kuh kuhtwena orekma sahyac ma kuh in mogle apact uh.



Kom fin oasr ke acn ma fihrihyak ah, orekmakihn PPE ac ke pacl se kom eslah, taran ke kom pruh ma inge tuh apact ac dust in tiac suun kom.



Nikmet mongo ke acn ma fihrihyak ah. Nokomlah inwaclihn sucfah in kof in nihmnihm.



Ohllah kuhtwena ma ma itucklac liki acn ma fihrihyak ah ke sop ac kof. Yuyu ac ohllah aunsifom tukun kom som liki acn ma fihrihyak ah.



Tuni lah fuhkah nwacsnwacsiyen engyeng ke acn kom muhta we. Tuhn sra folfol kalmac pa wo! Fin eklac ohiyacn engyeng an, liye komyang.

In eis ma sasuc, som nuhke health.hawaii.gov/mauiwildfires



Ma Pwacsin ke Apact ke E Luhlahp Maui



Meac DOH oruh tuh in karingihn mouh luhn mwet uh?



Kuhtuh Pac Mwe Tuni ac Srihkasrak

- DOH ac tahfwelah na oraclah mwe tuni yen engyeng uh ke accn ma fihrihryak ah ac oruh mwe srihkasrak ke yen engyeng uh in liye fin oasr ma pwacsin kuh fohkfohk kac.
- DOH ac oruh mwe srihkasrak nuhke apact fin acn Lāhainā ac wi EPA orekma.
- DOH ac tahfwelah na orekma yurin Hawai'i Department luhn Education in tuni ac srihke lutlut ma wi suun ongaiyac se inge.



Luhn Suc Petsac Inge: U.S. EPA

Karingihn Apact In Tiac Som Nuhke Yen Engyeng uh

- DOH siyuck sing EPA in oruh tuh orekmakihnyen mwe orekma se inge Soiltac, sie mwe srihkasrak nuhke fohk uh, in s ana orek ke accn ma fihrihryak fin can Lāhainā ma fototo nuhke acn ma mwet uh muhta we. Mwe srihkasrak inge Soiltac orek tari fin acn Kula ke September 25.
- DOH ahkkweye pac County luhn Maui in oraclah pac kuhtuh oakwuck in karingihn, weacng tulohkihnye mwet liki lihlihi fohk uh ac oraclah nien kof ma ac karingihn dust ac apact uh.

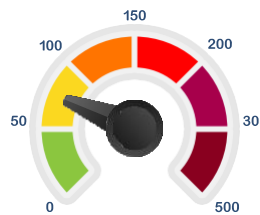
Ngac tuni fuhkah lah nwacsnwacs yen engyeng uh ma fototo nuh lohm sik?



Kuhfwen srihke yen engyeng uh tahfweyucklac na orekmakihnyuck fin acn Lāhainā and Kula.

Tuni Online kuh ke App:

- Website: fire.airnow.gov
- Apps: AirNow, IQ Air, Local Haze, Paku



DOH kacfwe mwet uh in muhtana in lohm ac lakiyac window uh ke pac se yen engyeng uh ahkkahlwemyeyuck ma eklac liki tuhn sra folfol nuhke kuhtwena tuhn sahyac.

In eis ma sasuc, som nuhke health.hawaii.gov/mauiwildfires



Ma Pwacsin ke Apact ke E Luhlahp Maui



Ngac etuh fuhkah lah nga suun arsenic ke srihpen e luhlahp sac?

Oasr kain in mwe srihkasrak nuhke srah ac kof luhn mwet se in liye luhpan arsenic ma oasr in mahnoltahl, tuhsruhktuh arlac yohk srihpac in esam lah mwe srihkasrak inge oasr pac ma yohk el tiac in ahkkahlwemye.

Mwe srihkasrak inge ac kuh in liye fin luhpan arsenic ke monun mwet se yohk kuh srihk liki ma fal in oasr ke sie mwet. Mwe srihkasrak inge kuh pac in ahkkahlwemye luhpan arsenic ma tuhkuh ke mongo oacna sresre, ik, powe, seaweed ac mongo ke inkof uh. Esam, inkaiyen mongo uh oasr arsenic kac (oanca seafood) ac ma inge tiac sensen. Fin arsenic ke mwet se pacl 2 yohk liki ma oasr in mwet sahyac uh, yohk srihpac in eis kahsrüh tuh in ahksrihyelah luhpan arsenic me som nuhke mahnos.

Mwe srihkasrak se inge tiac kuh in ahkkahlwemye lah arsenic sahyac ke mahnnon mwet se tuhkuh yac me. Kuhtuh sin arsenic inge sahp oasr ke srihpen mwet sacn suun apact. Kuhtuh sahp liki mongo oacna sresre, ik, powe, seaweed, rais ac kuhtuh pac mongo sahyac. In eis mwe srihkasrak inge ac tiac kuh in ahkkahlwemye fin mwet sacn ac masack ke srihpen arsenic.

Yac air purifiers luun lohm uh kuh in ahknwacsnwacsyelah arsenic?

HEPA air purifiers kuh in kahsrüh ahknwacsnwacsyelah engyeng luun lohm uh k eel eslah apact ac dust ke acn engyeng uh ma sahp oasr arsenic kac.

Yac oasr u in mwet ma enenuh in taran tuh eltahl in tiac suun apact?

Tuhlihk srihksrihk, mwet pihutuh, ac mwet ma mwesen kidney weacng mwet ma eis dialysis enenuh in taran na pwacye tuh eltahl in tiac sunn apact ac som nuhke acn ma fihrihyak ah. Lead el sie ma ma pwacsin nuhsin tuhlihk srihsrihk uh ac ke pacl se eltahl srack oan in insiyacn inac (fetus), ma inge kuh in ahkkulukye kapwack ke brain. Mwet ma mwesen kidney oasr pac ke sensen yohk in pwacsin lac ke arsenic mweyen arsenic uh ahknwacsnwacsyeyucklac liki mahno ke kidney luhn mwet sacn.

Meac mwet uh enenuh in oruh fin mwe srihkasrak nuhke yen engyeng uh eklac tuhn rangrang, orange kuh sruhsrah?

Fin mwe srihkasrak yen engyeng uh fin acn Lāhainā or Kula som liki tuhn sra folfol (nuhke rangrang, orange, sruhsrah, purple, maroon), mwet fin acn uh enenuh in:

- Tiac som nuh likinum in oruh kais kuhtuh mwikwikwi tuh in ahksrihyelac sensen in sun ma inge ac sensen nuhke moul luhn mwet se. Ma inge yohk srihpac, yohk na nuhsin tuhlihk srihsrihk ac mwet pihutuh.
- Muhta luun lohm ac kaliyac window ac sruhngucl uh. Fin kom orekmakihn air conditioner, oraclah in oasr ke recirculate option.
- Kom fin enenuhin som liki accn se ma fihrihyak an, urohckack air conditioner ke stosah ukom an ac oraclah in oan ke recirculation option.

Nwacsnwacs ke yen engyeng uh kuh in eklac fal nuhke kais kuhtuh srihpac, weacng ma ma tuhkuh ke dust ac kuhtuh ma ma oacna exhaust ke stosah uh. Kahs in sensen oreklac tari, mwet ke sie accn ma fihrihyak kuh in muhtwacwack mukwikwi ke pacl se engyeng uh nwacsnwacs lah ac mwe srihkasrak uh eklac rangrang.

Yac re-entry kuh in orek ac tiac sensen?

Re-entry oruh sie ma sensen na pwacye, yohk na fin apact uh mokleyuck. Orekmakihn kuhfwen PPE ma wo ac tiac mokle apact uh ac ahksrihyelah sensen in suun ma pwacsin inge ac sensen nuhke moul luhn mwet uh. Re-entry visit uh sensen nuhsin tuhlihk srihsrihk, mwet pihutuh, ac mwet ma mwesen kidney weacng mwet ma orekmakihn dialysis.

Mask N-95 uh karingihn wo liki ma pwacsin ac fohfohk uh. Mask an enenuh in fal wo nuhke motom.

In eis ma sasuc, som nuhke health.hawaii.gov/mauiwildfires

