

Pakair pid Pihl Samin nan Lahāinā oh Upper Kula



PWEHN SEWESE TOHN MAUI ME KISINIEI EN NANSAPW KAHREHDA APWAHL KAN

Kempa en Maui Department of Water Supply wiahda Pakair pid Pihl Samin (UWA) nan wehi en Lahāinā oh Upper Kula

Nin duwen isihs en nansahpw sisdem en pihl kan kak saminkihla soang en chemical oh bacteria kan ma kisinie i kahrehda ohla en sisdem en pihl.

Soang en ohla pwukat kak kahrehda edinie i, kaks, oh/de soang en chemical teikan en pidolong nan paip en pihl kan. Kasamin en pihl pil kak wiawi ma paip me wiahkihda plastic isihs, me kin wiawi ma paip mih pahnganin pwehl neh 1.5 de tikitik sang.

DEHR NIM PIHL EN IMWOMW

Ke anahne nim pihl en poatel de soang en pihl me Maui County Department of Water Supply (DWS) kihonguhk pwehn ke en kak nim (iangahki ahmw kamwenge seri pwehlel), widengim wiahda ais, de kuhkih mwenge.

DEHR SONG KAMWAKELEKEL PIHL

Pihl sohte pahn mwakelekelda ma ke pwoail, filter, kapateng chlorine de soang en disinfectant teikan. Ma mie soang en volatile organic compound kan (VOC) nan pihl e kak mwarahkpeseng nan kisinieng.

Ma UWA pwung pid imwomw de ahmw wasahn pisinis:



Dehr doadoahngki pihl en ihmw pwehn nim de kang, iangahki nimpihl, kuhk, de widengi. Dehr kang ais me kolang masihn en wiahda ais.



Doadoahngki pihl kepeu pwehn lopwolopw oh kihda likin ihmw pwe likou en madla.



Duhdu ni mwiadang. Doadoahngki pihl me sohte karakar oh tehk mwahu me mie kisinieng nan ihmw. Duhdu nan shower ah kaidehn tub.



Doadoahngki masihn en kamwakelekel dahl akan.



Dehr pampap nan pool de hot tub kan



Tehk mwahu esingiehk mwahu ni ahmw doadoahngki pihl nan imwomw.

KALELEPAK KAN??

DWS: 808-270-7550

www.mauicounty.gov/water | health.hawaii.gov/mauiwildfires

MENLAU IDAWEN KAWAID EN KAUN EN WEHI KAN KOAROS.

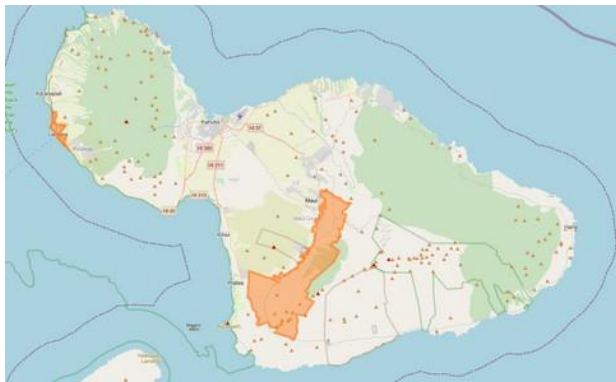


Pakair pid Pihl Samin nan Lahāinā oh Upper Kula



PWEHN SEWESE TOHN MAUI ME KISINIEI EN NANSAPW KAHREHDA APWAHL KAN

Ia mwomwen ahi kak esehla ma imwei de nei wasahn p̄snis iang Pakair pid Pihl Samin?



Scanih QR code de kilang
www.mauicounty.gov/water pwehn
doadoahngki map oh diar imwomw de
wasahn p̄snis de kilang lipwahn dehs.

Pakair pid Pihl Samin en Upper Kula:
<https://www.mauicounty.gov/CivicAlerts.aspx?AID=12678>

Pakair pid Pihl Samin en Lahāinā:
<https://www.mauicounty.gov/CivicAlerts.aspx?AID=12679>

Doadoahk en kamwahuiala Sisdem en Pihl en Lāhainā oh Upper Kula

DWS oh Hawai'i State Department of Health oh U.S. Environmental Protection Agency wia doadoahkpene pwehn kamwahuiala sisdem en pihl. Kempa pwukat keskeseu mehn kadehde tohto iangahki:

Kolokol katepen kasamin en pihl pwehn apwahlih sisdem en pihl

Sisdem kan me mih nan wasahn kisiniei en nansahpw sohte iang sisdem en pihl tohrohr. Mie mehn keseu pid masihn en hydraulic kan pwehn tehk mwahu me sisdem kan sohte pwurehng saminla.

Tehk mwahu me wasa me pihl kohsang ie mwahu oh me aramas kak nim pihl nan sisdem

Se kin wiahda dehs pid soang en dipwisou kan me kak kasaminala pihl iangahki organic compound kan, bacteria, oh soang en mehn kasamin teikan. DWS mwein pahn kakuhs pihl sang sisdem en pihl pwehn kamwakelekel sisdem. Se pahn pwurehng wia dehs mwurin kamwakelekel. Se pahn wia soang en dehs tohto mwohn aht pahn kawekila pakair wet.

KALELEPAK KAN??

DWS: 808-270-7550

www.mauicounty.gov/water | health.hawaii.gov/mauiwildfires

MENLAU IDAWEN KAWeid EN KAUN EN WEHI KAN KOAROS.

Unsafe Water Advisory 9/27/2023
Pohnpeian

