

Ho'olaha Wai Palekana 'Ole o Lāhaina a me Kula Uka



NO KA PO'E NOHO MA MAUI I PŌ'INO I KE AHI

Ua ho'olaha ka 'Oihana Wai o ke Kalana o Maui i ka Ho'olaha Wai Palekana 'Ole (Unsafe Water Advisory: UWA) no kekahi mau wahi o Lāhaina a me Kula Uka.

Ke pau loa ka 'āina nāhelehele i ke ahi, hiki ke pō'ino nā paipu wai i nā lā'au a i 'ole nā mea lepo like 'ole, a 'oi aku ka pilikia ke pau ka ikaika o ke kahe o ka wai paipu.

Hiki ke pau ka ikaika o ke kahe 'ana o ka wai ma muli o ka paipu haki a i 'ole no ka nui loa o ka ho'ohana 'ia o ka wai, a pēlā e omo 'ia ai ka uahi, ke ea wela, a i 'ole ka lā'au i loko o ka paipu ho'okahe wai. Hiki nō ho'i ke haumia ka wai ke wela 'ia nā mea 'ea i ke ahi, 'oi aku ka pilikia inā kanu 'ia nā paipu he 1.5 kapua'i ma lalo o ka 'ili honua.

MAI INU I KA WAI PAIPU

He pono nō e inu 'ia ka wai 'ōmole a i 'ole ka wai inu i ho'olako 'ia e ka 'Oihana Wai o ke Kalana o Maui (Department of Water Supply: DWS), 'o ia ka wai kūpono no ka hana waiū a me ka wai momona na ka pēpē, no ka palaki niho, hana poke hau, a no ka ho'omākaukau mea 'ai.

MAI HO'Ā'O E HO'OPONOPONO I KA WAI NOU IHO

'A'ole e ho'oponopono 'ia ka wai ma ka paila 'ana, ka ho'opa'ahau 'ana, ke kānana 'ana, ka ho'okomo 'ana i ke chlorine a i 'ole kekahi 'ano lā'au ho'oma'ema'e, a i 'ole ke waiho 'ia ka wai e kū wale. Ke ho'ohuoi 'oe i ka haumia i ka volatile organic compound (VOC), hiki ke ho'oku'u 'ia ka VOC i ke ea ke paila 'ia i ka wai.

Ke kau kou home a hui paha ma lalo o ka ho'olaha UWA:



Mai ho'ohana i ka wai paipu no ka inu a i 'ole no ka ho'omākaukau mea 'ai, 'a'ole e palaki niho me ka wai. Mai ho'ohana i ka poke hau no loko mai o ka mīkini ho'oku'u poke hau.



E ho'ohana i ka wai hu'ihu'i no ka holoī lole a i 'ole nā mea like 'ole. E ho'omalalo'o i ka lole ma waho.



E kaupalena i ka lō'ihī o ka 'au'au 'ana. E ho'ohana i ka wai 'ano mehana nō a e pā mai ka makani ma kahi 'au'au. E 'au'au me ka wai helele'i, 'a'ole me ka wai kū.



E ho'ohana i ka wai holoī pā no ka holoī 'ana i ke pā. E ho'ohana i ke ea ho'omalalo'o pā.



Mai komo i ka pūnāwai 'au'au a i 'ole ke kapu 'au'au wai wela.



E hāmama nā puka i puhi mai ke ea i loko ke ho'ohana 'oe i ka wai ma loko o ka hale.

HE NĪNAU NŌ KĀU?

DWS: 808-270-7550

www.mauicounty.gov/water | health.hawaii.gov/mauiwildfires

E HANA E LIKE ME KE KUHIKUHI 'ANA A NĀ LUNA AUPUNI KŪLOKO.

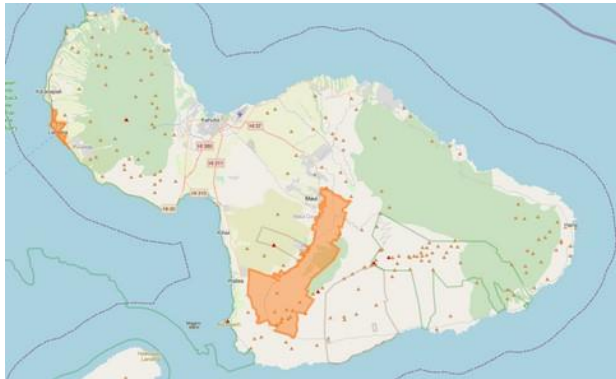


Ho'olaha Wai Palekana 'Ole o Lāhaina a me Kula Uka



NO KA PO'E NOHO MA MAUI I PŌ'INO I KE AHI

Pehea wau e 'ike ai inā ua ka'a ko'u home a hui paha ma lalo o ka Ho'olaha Wai Palekana 'Ole?



E pa'i ki'i i ka hō'ailona QR a i 'ole e nānā i ka 'ao'ao www.mauicounty.gov/water e nānā ai i ka palapala'āina a ka DWS e huli ai i kou home a hui paha, a i 'ole no ka nānā i nā helu hō'ike o ka ho'okolokolo 'ana.

Ho'olaha Wai Palekana 'Ole o Kula:
<https://www.mauicounty.gov/CivicAlerts.aspx?AID=12678>
Lahainā Unsafe Water Advisory:
<https://www.mauicounty.gov/CivicAlerts.aspx?AID=12679>

Ka Ho'oponopono 'ana i ka 'Oihana Paipu Wai o Lāhaina a me Kula Uka

Ke hana pū nei ka 'oihana DWS me ka 'Oihana Ola o ke Aupuni Moku'āina 'o Hawai'i a me ka 'oihana U.S. Environmental Protection Agency no ka ho'oponopono 'ana i nā 'oihana paipu wai ā pono hou. Na ia mau 'oihana e nānā i nā laina like 'ole inā ua pilikia i kēia mau mea:

Loa'a nā mea haumia a hana 'ia ka hana e palekana ai ka wai

Ua ho'oka'awale 'ia nā wahi pō'ino i ke ahi mai nā māhele 'ē a'e o ka 'oihana nui. Ke mālama 'ia nei ka ho'okolokolo 'oihana mīkini ea e hō'oiā'io ai i ka ho'opalekana 'ia o ka 'oihana i 'ole e pi'i ka haumia.

Ka hō'oiā'io 'ana i ka ma'ema'e o ke kumu wai a me ka wai o loko o ka 'oihana paipu wai i palekana Ke mālama 'ia nei ka ho'okolokolo 'ana no nā hunahuna volatile organic compound (VOC), ka mea lepo, a me nā mea haumia 'ē a'e ma nā wahi like 'ole mai 'ō ā 'ō o ka 'oihana wai. Na ka DWS nō paha e ho'okahe i nā mea haumia ā pau loa o loko o nā māhele like 'ole o ka 'oihana wai. E ho'okolokolo hou 'ia nā māhele like 'ole o ka 'oihana ma hope o ka ho'okahe 'ia o ka wai. E nui paha ka ho'okolokolo 'ana ma mua o ka ho'oponopono 'ia o ka UWA.

HE NĪNAU NŌ KĀU?

DWS: 808-270-7550

www.mauicounty.gov/water | health.hawaii.gov/mauiwildfires

E HANA E LIKE ME KE KUHIKUHI 'ANA A NĀ LUNA AUPUNI KŪLOKO.

Unsafe Water Advisory 9/27/2023
Hawaiian

