

Lahāinā me pwan Upper Kula Afanefanen Konik Ese Tumun



REN CHON NOM NON MAUI KENA RA NGAWENO SENI KAARNGAWENO KENA

Ewe Maui County Department of Water Supply a kan atowowu Afanefanen Konik Ese Tumun kena (UWA) ren pekin kena seni Lahāinā me pwan Upper Kula.

Nupwen ew kaarengaweno, systemin konik kena repwene kan monungaweno ren chemical kena ika bacteria, akaewin ika ew eef a kan popun ren paipin konik kena ar repwene nusuni pressure.

Koturutiwen non pressurun konik pokiten ren tanon lainin konik kena ika tekianon eaea konik, epwene tongeni popun ren etiet, kaaren gas kena, me/ika chemical kena ar repwene kusunong non ewe lainin konik. Monungaw a pwan tongeni poputa nupwen mettochun plastic kena non ewe system ra kan pwano ngeni tekian kaar, iteiten nupwen paipen konik kena ra nom fan pwuun ra kan mwoch seni 1.5 fit.

KOSAPW WUUN KONIK SENI EOM SINK

Ruumen konik ika konik kena ra uwato seni ewe Maui County Department of Water Supply (DWS) repwene kan eaea ren wuun (mi pachenong forun anen menukon me pwan chonu wuun kena), puroseni ngiim, forun ice, me pwan amonen mongo.

KOSAPW FORI EOM KOPWE PUSIN NIMETI EWE KONIK WON PUSIN EN

Apwichi, afounon, filtereni, anofitanong chlorine ika pwan ekkoch mettochun animenim kena ika iseni chok ewe konin resapw fori pwe ewe konik epwe tumun. Ika pwe ewe monungawen masowen organic a kan kwaseno (VOC) ra ekkieki pwe a nom non ika ra kuuna, apwichin konik epwene tongeni atowowu VOCs ngeni non ewe asepan.

Ika pwe imwom ika eom bisini a kan nom fan ewe UWA.



Kosapw eaea konik seni sink ren popun kena epwe ren wuun, mi pachenong wuun, amwot, ika puroseni ngiim. Kosapw eaea ice seni neni forun ice kena remi automatic.



Eaea chonupat ren eom kopwe sopuni wuufom ika pwan ekkoch mettoch kena. Apwasa wuufom kena me nukun imwom kena.



Awukuku fansoun tutu. Eaea konik mi ekisichok pwich me pwan afeina asepan non ewe neni. Kopwe tutu non shower kena nge esapw non tap kena.



Eaea ew dishwasher ren eom kopwe tonu sepieom kena. Akunu ngeni ewe tetenin apwasen asepan.



Ko sapw eaea pools ika hot tubs kena.



Eaea fichin afeinin asepan nupwen ka eaea konik non imwom kena.

KAPASEIS KENA?
DWS: 808-270-7550

www.mauicounty.gov/water | health.hawaii.gov/mauiwildfires

KOSE MOCHEN TAPWEI MEINISIN AFANEFAN KENA SENI CHON NEMENEMEN NON NENIEOM
KENA.

Unsafe Water Advisory 9/27/2023
Chuukese

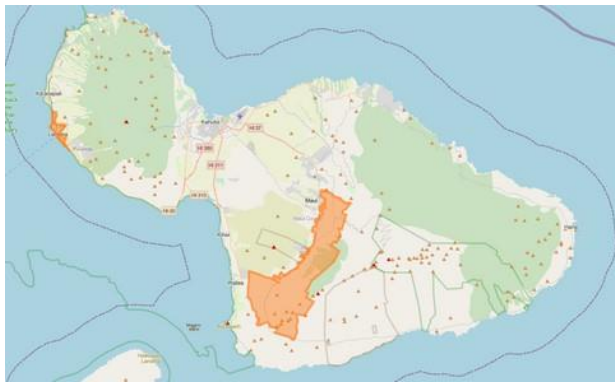


Lahāinā me pwan Upper Kula Afanefanen Konik Ese Tumun



REN CHON NOM NON MAUI KENA RA NGAWENO SENI KAARNGAWENO KENA

Ifa usun ai upwe sinei ika imwei we ika bisinis ra ka pekin ren ewe Afanefanen Konik Ese Tumun?



Scan ewe QR code ika churi www.mauicounty.gov/water ren eom kopwe eaea an DWS we foforfengenin map ren eom kopwe kuuta imwomuwe ika bisinis ika nengeni pungun tes kena.

Upper Kula Afanefanen Konik Ese Tumun:
<https://www.mauicounty.gov/CivicAlerts.aspx?AID=12678>

Lahāinā Afanefanen Konik Ese Tumun:
<https://www.mauicounty.gov/CivicAlerts.aspx?AID=12679>

Aniwinato ewe Lāhainā me pwan Upper Kula Water Systems kena ngeni Aninis

DWS a kan angangfich ngen ewe Hawai'i State Department of Health me pwan U.S. Environmental Protection Agency ren ar repwe aniwinanong ekkewe systemin koni ngeni aninis. Ekkei ofes ra kan awukuku chomong paip kena ren pwarata mi pachenong:

Pineieno ikewe ekkewe monungaw ra etto me ie me pwan tumunu ewe systemin konik Neni kewe seni ekkewe system ra kan ngaweno seni ewe eef ra kan eiemuno seni ekkewe nusun seni ewe system. Ew chosa ren system hydraulics kena ra kan sopwesopweno ren ar repwe tumunu pwe ekkewe systems ra kan tumun seni napenon monungaw.

Tumunu pwe ikewe konik a etto me ie me pwan konik me non systemin katowow a kan tumun ren wuunon Anapenon tesin ren masowen kena ren organic ra kwaseno, bacteria, me pwan ekkoch monungawen kena ra kan sopwesopweno non chomong neni kena me non unusen ew me ew systemin konik kena. DWS epwene nimetawow monungaw seni pekin kena seni ekkewe systems. Ekkewe systems repwene tes sefan murin ewe nimenimewow. Ekkoch foforon tesin repwen fis me mwan ewe UWA a kan asiwinino.

KAPASEIS KENA?

DWS: 808-270-7550

www.mauicounty.gov/water | health.hawaii.gov/mauiwildfires

KOSE MOCHEN TAPWEI MEINISIN AFANEFAN KENA SENI CHON NEMENEMEN NON NENIEOM KENA.

Unsafe Water Advisory 9/27/2023
Chuukese

