

# Lāhainā and Upper Kula Unsafe Water Advisories



## FOR MAUI RESIDENTS IMPACTED BY WILDFIRES

### The Maui County Department of Water Supply has issued Unsafe Water Advisories (UWA) for parts of Lāhainā and Upper Kula.

During a wildfire, water systems may become contaminated with chemicals or bacteria, especially if a fire causes water lines to lose pressure.

Drops in water pressure due to broken water lines or high water usage could cause smoke, hot gases, and/or chemicals to be sucked into water lines. Contamination can also be caused when plastic materials in the system are exposed to high heat, typically when buried water lines are less than 1.5 feet.

#### **DO NOT DRINK YOUR TAP WATER**

Bottled water or potable water provided by the Maui County Department of Water Supply (DWS) must be used for drinking (including making baby formula and juice), brushing teeth, making ice, and food preparation.

#### **DO NOT TRY TO TREAT THE WATER YOURSELF**

Boiling, freezing, filtering, adding chlorine or other disinfectants or letting water stand will not make the water safe. If volatile organic compound (VOC) contamination is suspected or detected, boiling water could release VOCs into the air.

### If your home or business is under the UWA:



**Do not use tap water for any consumptive purpose, including drinking, cooking, or brushing your teeth.** Do not use ice from automatic ice makers.



**Use cold water** to wash clothing or other items. Dry laundry outdoors.



**Limit shower time.** Use lukewarm water and ventilate the area. Take showers instead of baths.



**Use a dishwasher** to wash dishes. Turn it to the air dry setting.



**Do not** use pools or hot tubs.



**Use proper ventilation** when using water indoors.

### QUESTIONS?

**DWS:** 808-270-7550 | **DOH:** 833-833-3431 or 808-586-4468  
[www.mauicounty.gov/water](http://www.mauicounty.gov/water) | [health.hawaii.gov/mauiwildfires](http://health.hawaii.gov/mauiwildfires)

**PLEASE FOLLOW ALL INSTRUCTIONS FROM LOCAL AUTHORITIES.**

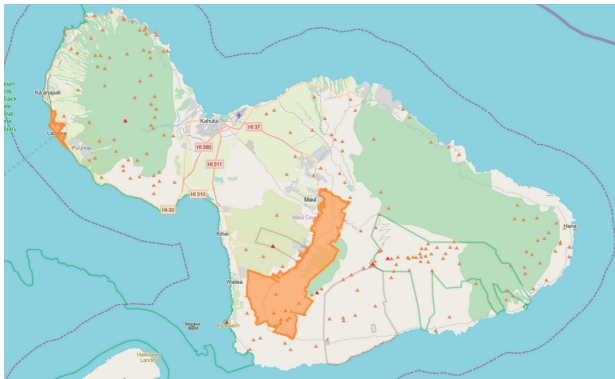


# Lāhainā and Upper Kula Unsafe Water Advisories



## FOR MAUI RESIDENTS IMPACTED BY WILDFIRES

How do I know if my home or business is part of the Unsafe Water Advisory?



Scan the QR code or visit [www.mauicounty.gov/water](http://www.mauicounty.gov/water) to use DWS' interactive map to search for your home or business or view test results.

Upper Kula Unsafe Water Advisory:

<https://www.mauicounty.gov/CivicAlerts.aspx?AID=12678>

Lāhainā Unsafe Water Advisory:

<https://www.mauicounty.gov/CivicAlerts.aspx?AID=12679>

## Returning the Lāhainā and Upper Kula Water Systems to Service

DWS is working closely with the Hawai'i State Department of Health and U.S. Environmental Protection Agency to return the water systems to service. These agencies are evaluating multiple lines of evidence including:

### Containing sources of contamination and protecting the water system

Areas of the systems impacted by the fire are being isolated from the rest of the system. An investigation of system hydraulics is underway to ensure that the systems are protected from further contamination.

### Ensuring source water and water within the distribution system is safe to drink

Extensive testing for volatile organic compounds, bacteria, and other contaminants is underway at many points throughout each water system. DWS may flush contamination from parts of the systems. The systems will be re-tested following flushing. Several rounds of testing will occur before the UWA is amended.

### QUESTIONS?

**DWS:** 808-270-7550 | **DOH:** 833-833-3431 or 808-586-4468  
[www.mauicounty.gov/water](http://www.mauicounty.gov/water) | [health.hawaii.gov/mauiwildfires](http://health.hawaii.gov/mauiwildfires)

**PLEASE FOLLOW ALL INSTRUCTIONS FROM LOCAL AUTHORITIES.**

Unsafe Water Advisory  
Updated August 29, 2023  
English

