

Mie Sawas en Roson en Madamadau



PWEHN SEWESE TOHN MAUI ME KISINIEI EN NANSAPW KAHREHDA APWAHL KAN

Kempa en Hawai'i Department of Health kin kihda sawas en roson en madamadau oh kadirala pwehn irail me nsensuwed pwehki kisiniei en nansahpw en Maui kak ale sawas me re anahne.

Soang en sawas wet iangahki:

- **Koasoaiheng sounsawas en roson en madamadau**
- **Sewese wehwehki dahme wiawi**
- **Sawas en psychiatric kan**
- **Sewese diar pil ehu soang en sawas me emen kak anahne**

Se Mwahuki Seweseiuhk:

Lahaina

Ākoakoa Place

(pahnangin Lāhainā Civic Center)

Ritingida Rahn 7 nan ehu ehu wihk

9:00 AM - 4:00 PM

Wailuku

121 Mahalani Street

Ritingida Niehd Iel Nialem

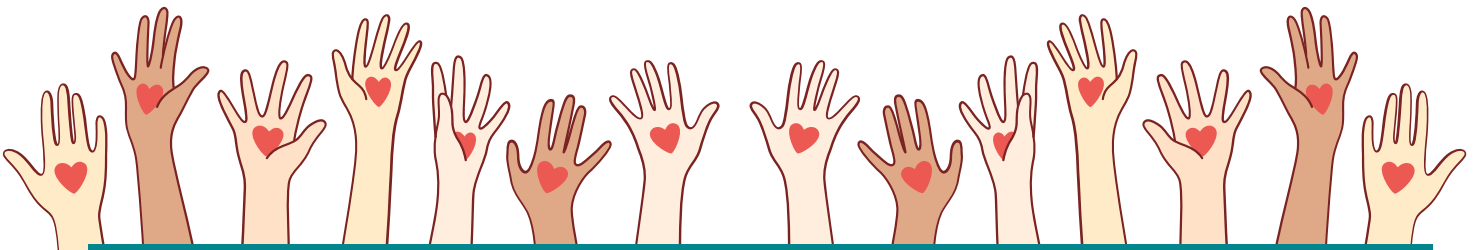
7:45 AM - 4:30 PM

Kahlih: (808) 495-5113 de (808) 984-2150

Emailih: mauiwellness@doh.hawaii.gov

Mwurin ohpihs ritingidi, kahlih Hawai'i CARES pwehn koasoaiheng sounsawas nan ahmw wehi ni

1-800-753-6879 de kahlih/textih/koasoai 988.



MENLAU IDAWEN KAWeid EN KAUN EN WEHI KAN KOAROS.

