

Jiban nan ro rej ejmour in kolemenlokjen



NAN RO ILO MAUI RAR JORREN JEN KIJEK EO

Hawai'i Ra e oan ejmour ej lelok nan ro rej bed ilo jiban ko ikijen kolemenlokjen im kalablok awa ko nan ro rej bok jorren in enjake ko ak jibed jen komelij jen wot kar kijeek eo ilo Maui.

Jiban ko ekoba

- Kajitikin ko ikijen ejmour nan kolmenlokjen
- Jiban ko ikijen lokjen an
- Jiban ko nan intok jen lomnak
- Kein kabilok ko

Kimij bed ijin nan jiban:

Lahaina

Ākoakoa Place

(itu lalin Lāhainā Civic Center)

Bellok 7 ran ilo wiik

9:00 JIBON - 4:00 JOTA

Wailuku

121 Mahalani Street

bellok Mandre-Polaidre

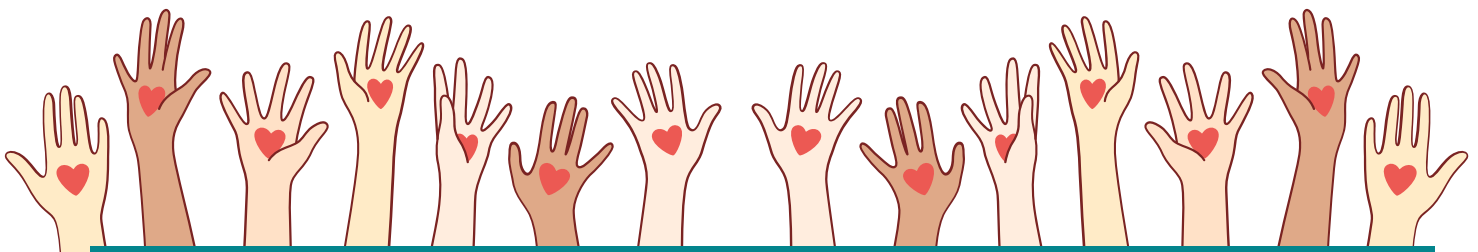
7:45 JIBON - 4:30 JOTA

Kurlok: (808) 495-5113 ak (808) 984-2150

Email: mauiwellness@doh.hawaii.gov

Elikin awa, kurlok Hawai'i CARES nan konono iben ro rej lale jorren ko ilo

1-800-753-6879 ak kurlok/text/chat 988.



JOUIJ IM LORE AOLEB KEMELELE JEN RO ILO MARON KO AN JIKIN EO.

