

# Mental Health Support Is Available



## FOR MAUI RESIDENTS IMPACTED BY WILDFIRES

The Hawai'i Department of Health is offering crisis mental health services and expanded hours for those experiencing emotional or psychological distress as a result of the Maui wildfires.

### Services include

- **Mental health counseling**
- **Trauma processing**
- **Psychiatric services**
- **Resource guidance**

### We're Here to Help:

#### Lahaina

Ākoakoa Place

(just below Lāhainā Civic Center)

Open 7 days a week

9:00 AM-4:00 PM

808-495-5113

#### Wailuku

121 Mahalani Street

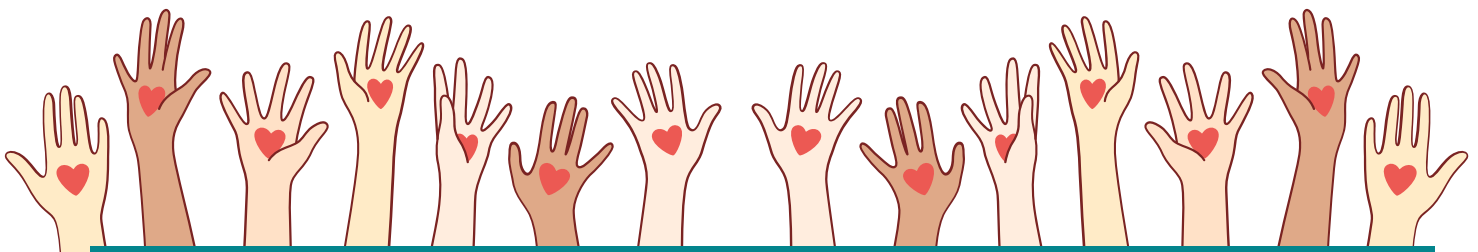
Open Monday-Friday

7:45 AM-4:30 PM

808-984-2150

Email: [mauiwellness@doh.hawaii.gov](mailto:mauiwellness@doh.hawaii.gov)

After hours, contact Hawai'i CARES to speak to a local crisis counselor at **1-800-753-6879** or call/text/chat 988.



**PLEASE FOLLOW ALL INSTRUCTIONS FROM LOCAL AUTHORITIES.**

