

# Mental Health Support Is Available



## FOR MAUI RESIDENTS IMPACTED BY WILDFIRES

The Hawai'i Department of Health is offering crisis mental health services and expanded hours for those experiencing emotional or psychological distress as a result of the Maui wildfires.

### Services include

- **Mental health counseling**
- **Trauma processing**
- **Psychiatric services**
- **Resource guidance**

### We're Here to Help:

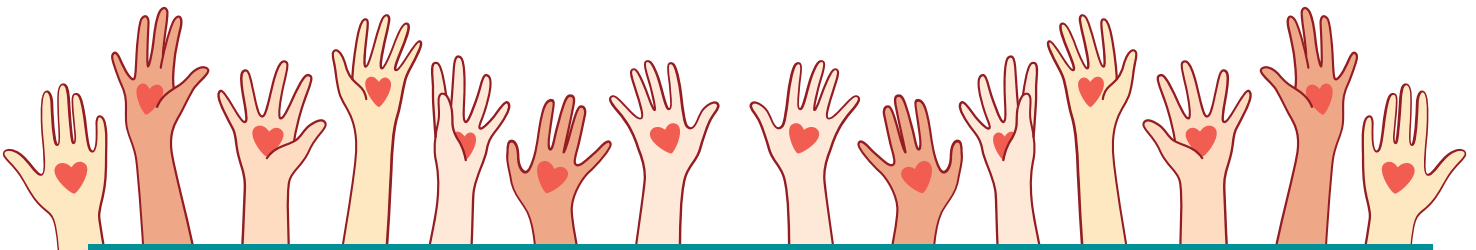
**Call: (833) 833-3431 or (808) 586-4468**

**Email: [mauiwellness@doh.hawaii.gov](mailto:mauiwellness@doh.hawaii.gov)**

**In person: Ākoakoa Place (Just below Lāhainā Civic Center)**

**Open 7 Days a Week | 9:00 AM-4:00 PM**

After hours, contact Hawai'i CARES to speak to a local crisis counselor at **1-800-753-6879 or call/text/chat 988.**



**PLEASE FOLLOW ALL INSTRUCTIONS FROM LOCAL AUTHORITIES.**

