

Hawai'i County Brownfields Workshop

County of Hawai'i - Planning Department
Michael Yee, Planning Director
November 2, 2017



General Plan Update

Hawai'i County Brownfields Workshop



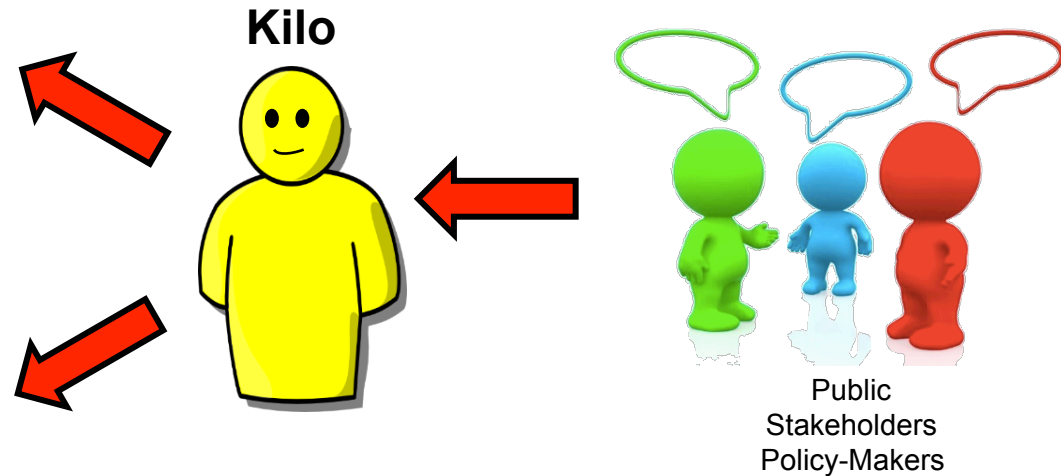
THE GENERAL PLAN IS A KEY PLANNER'S TOOL

Sets forth the Council's policy for long-range, comprehensive development of the County

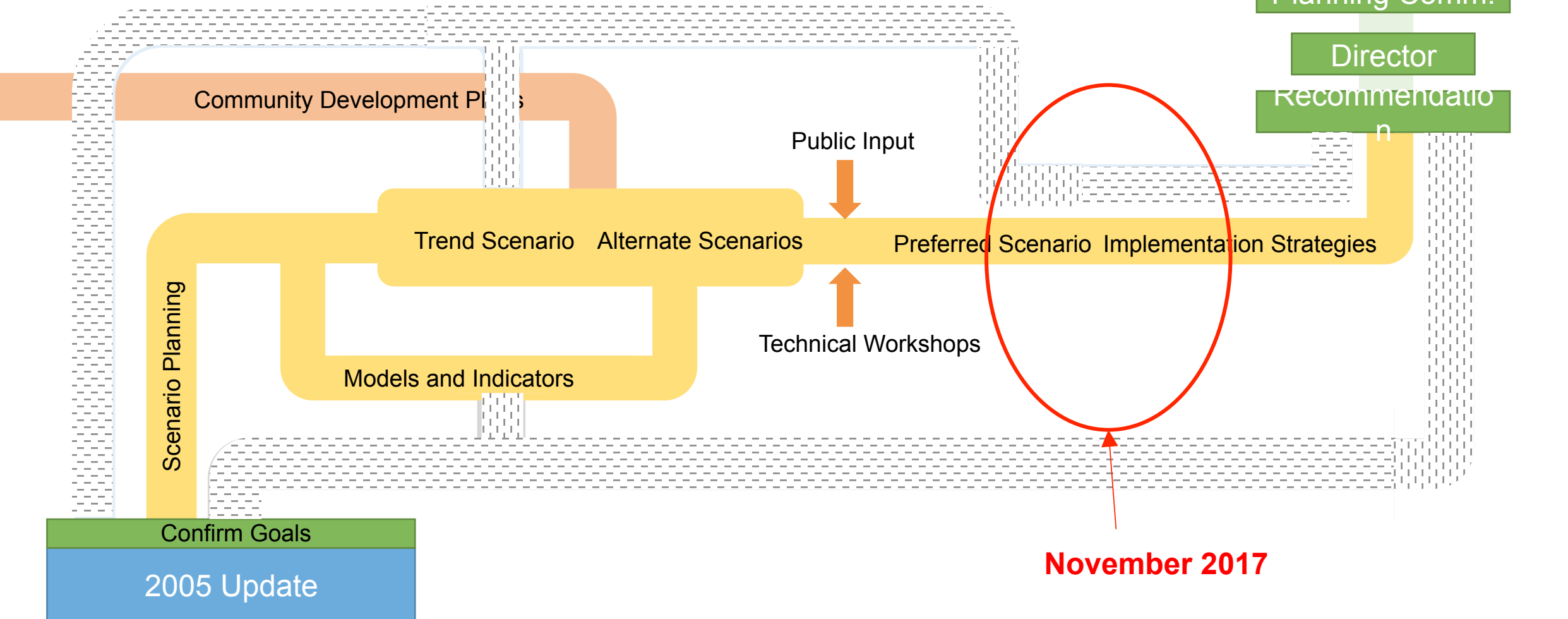
Mandated by
HRS & Charter

Meant to guide
all development
patterns

Establishes
priorities for
public
investments



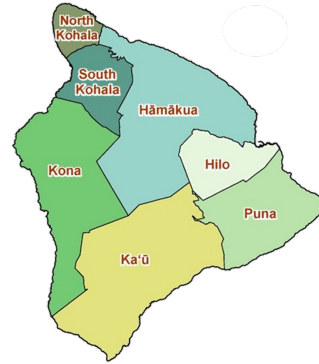
UPDATE WORKFLOW





Scenario Planning

CDP Land Use & Infrastructure Maps



Strategies & Policies

Goals
Objectives
Policies
Actions



Research



Where We've Been ➡ *Where We Are* ➡ *Where We're Headed*



Relationship Between General Plan and Community Development Plans

Hawai'i County Brownfields Workshop



Upcoming GP



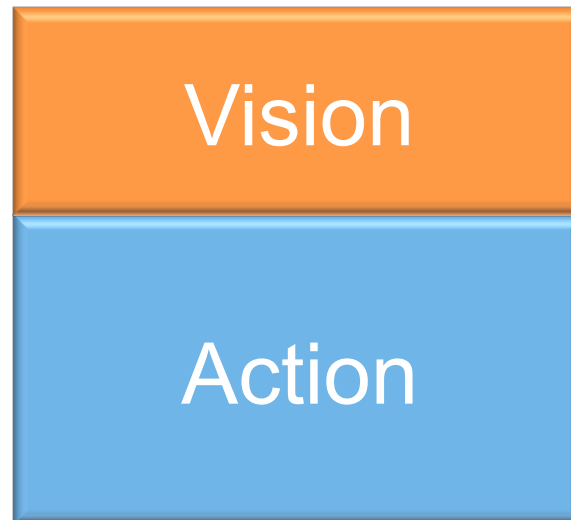
Aspirations

- **Themes/Principles**
- **Goals**
- **Objectives**

Strategies

- **Policies**
- **Guidelines**

Next Round CDPs



Implementation

- **Guidelines**
- **Policies**

Monitoring & Evaluation

- **Results**
- **Indicators**
- **Standards**



General Plan

- Island-wide legislative policy & development patterns
- Upload from CDPs
 - Regional Visioning
 - Common Goals & Objectives
- Detailed Island-wide Action/ Work Plan (new)
- Monitoring & Evaluation (new)

Community Development Plans

- Region-wide legislative policy & action document
- Goal and Objective: CDP Implementation
- Strategic Work Plan & Prioritized Action
 - Focused Project Management
 - Improved Monitoring & Evaluation



Relationship Between General Plan and Community Development Plans

Hawai'i County Brownfields Workshop

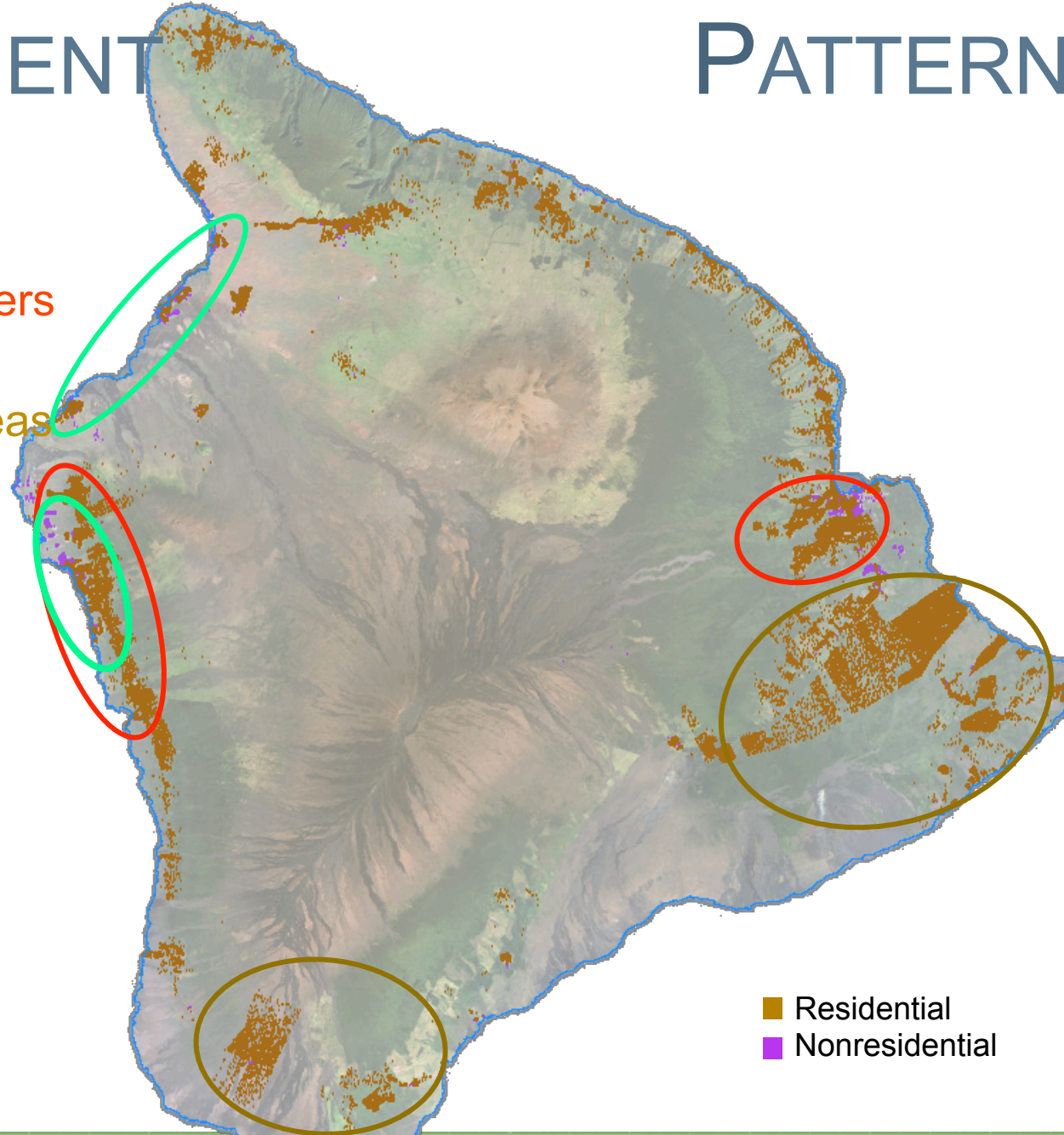


DEVELOPMENT TODAY

PATTERNS

Two primary urban centers
Visitor industry centers
Underserved growth areas
Otherwise rural

These patterns were
established in the
1960s



Only 60% of population in
Census urban areas

Low population density

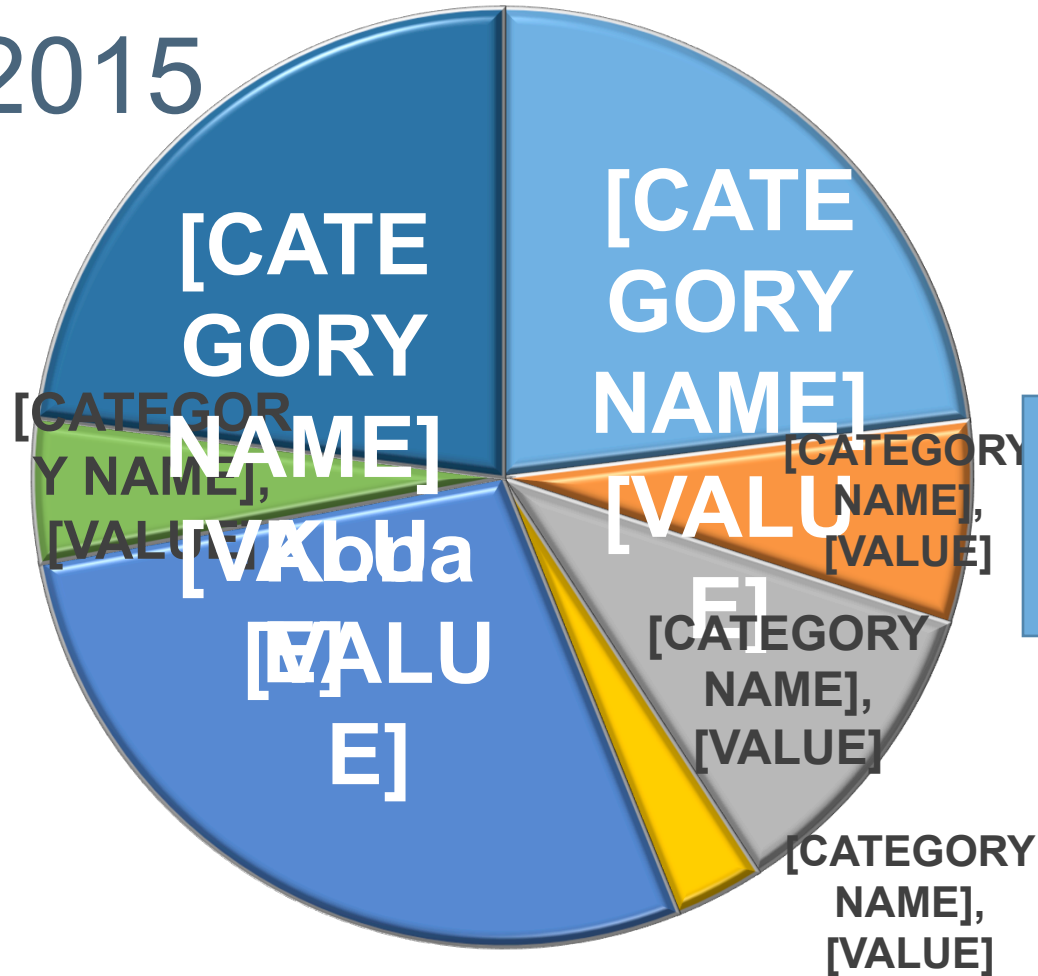
Ring of small historic towns
and villages, often with rural
residential and small farms
nearby



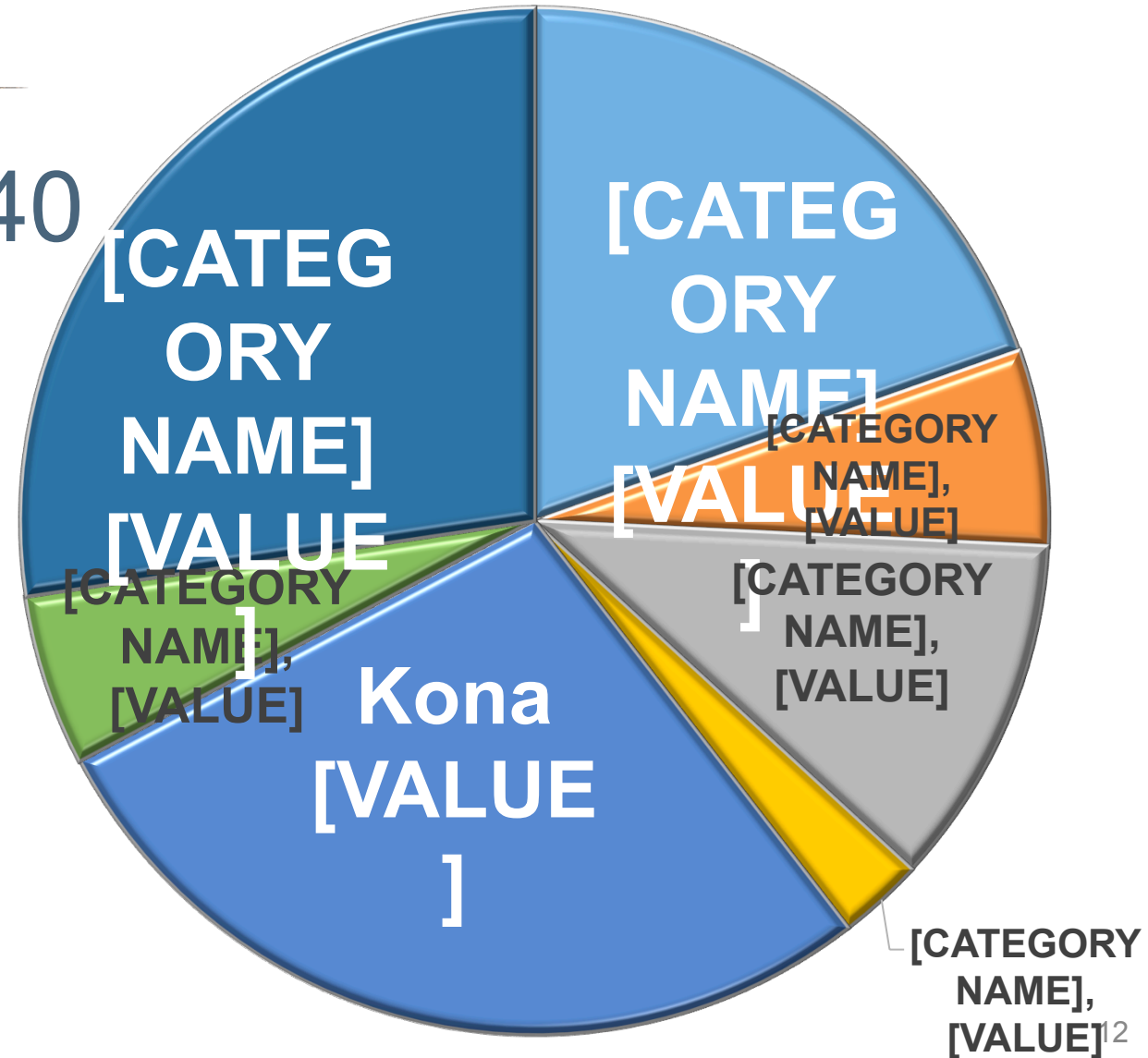


TREND MODEL

2015



2040





TREND MODEL

52%

growth by 2040

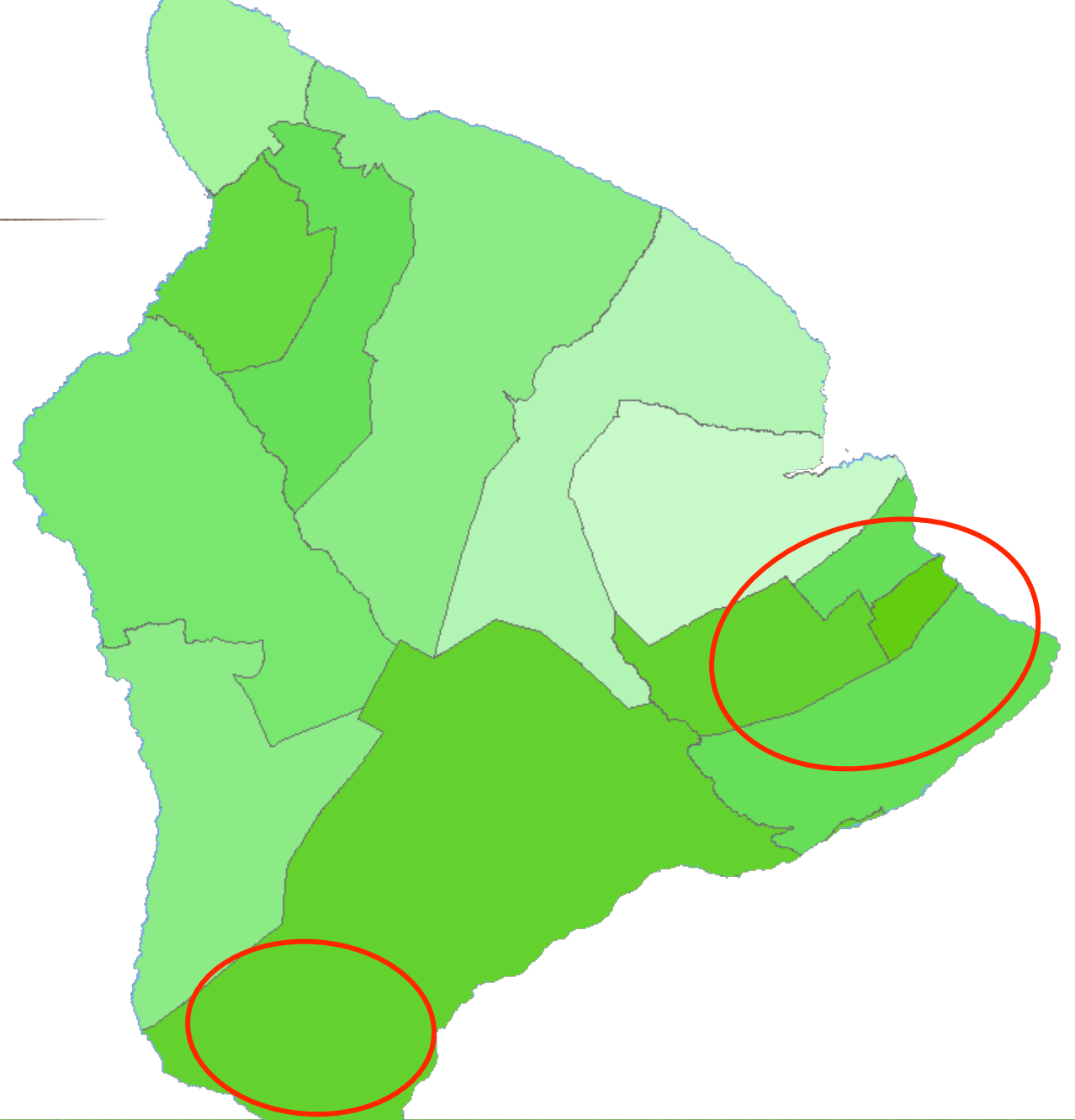
2015: 195,000

2040: 296,000

Rate of Growth

Slowest growth

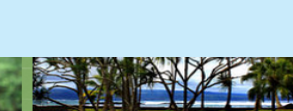
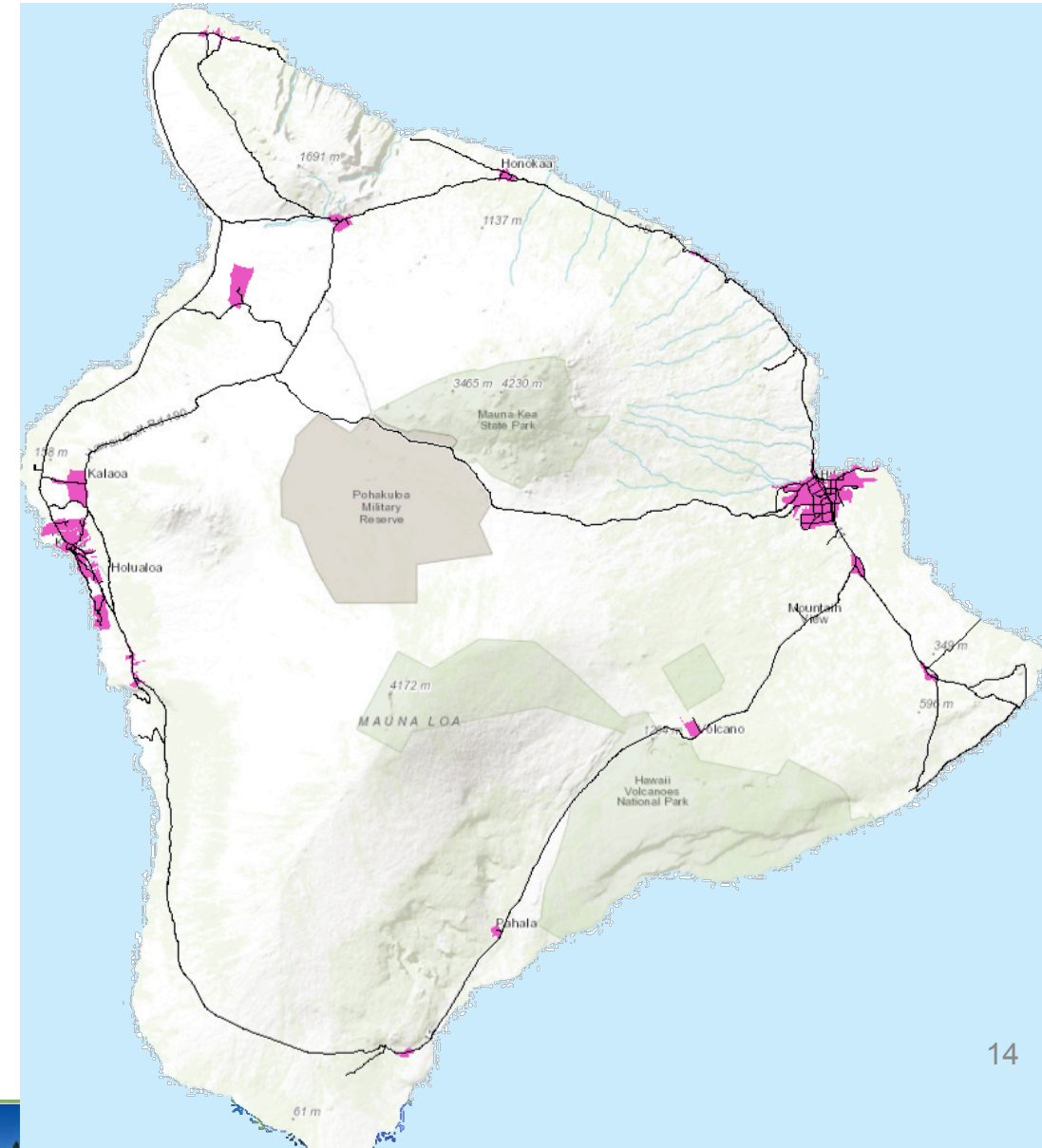
Fastest growth





INFRASTRUCTURE PRIORITY AREAS (IPA) MODEL

- Identify priority areas
- Focus future growth within IPAs
- Identified gaps in capacity and infrastructure
- Incentivized infill





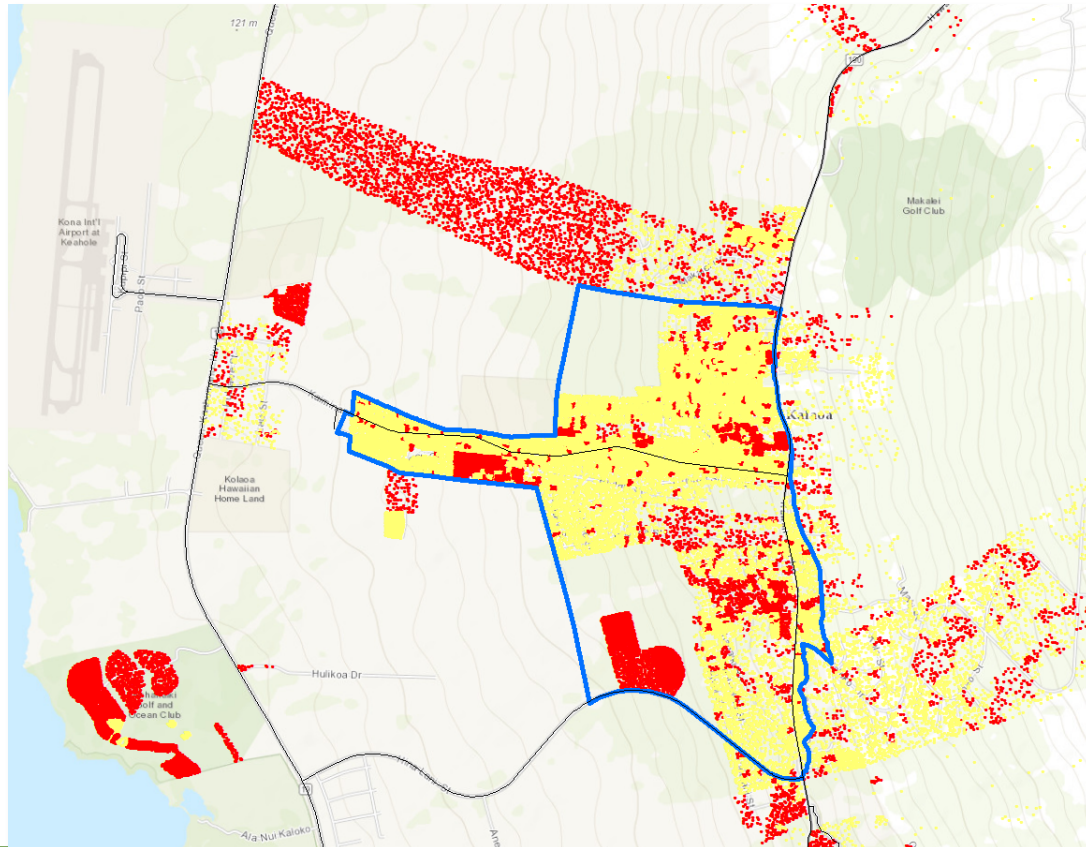
IPA MODEL

 IPA Boundary

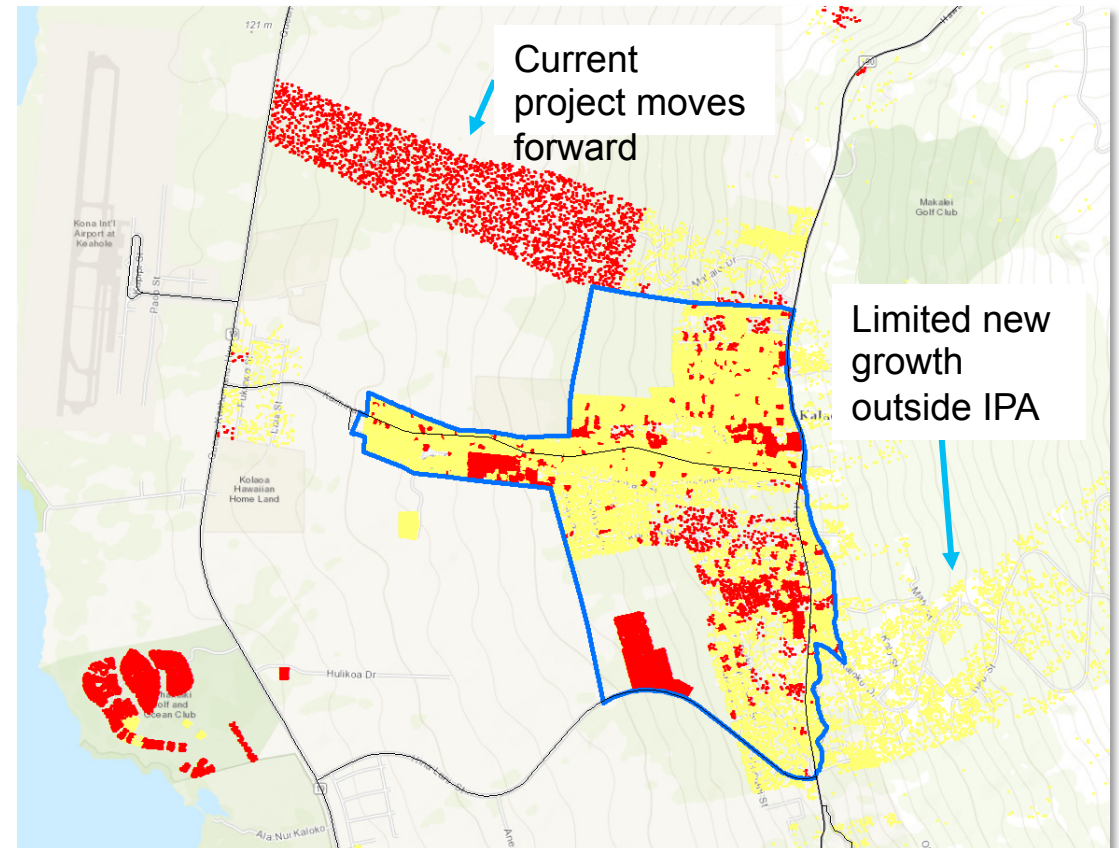
 Existing home

 New home

Trend Scenario

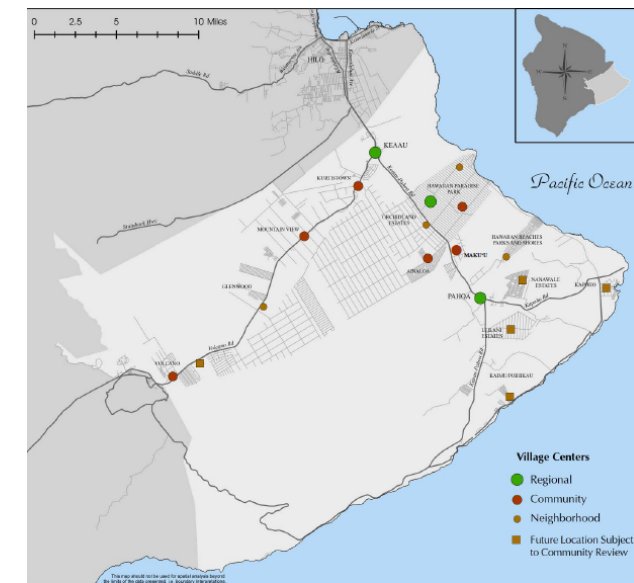
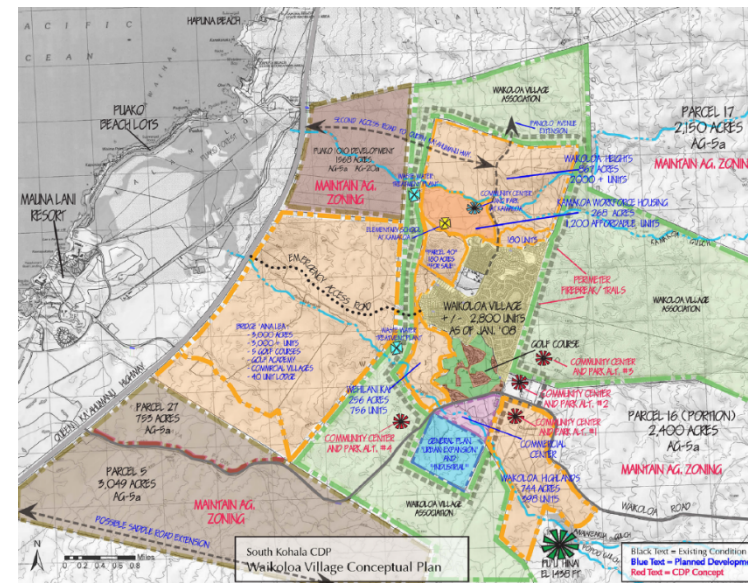
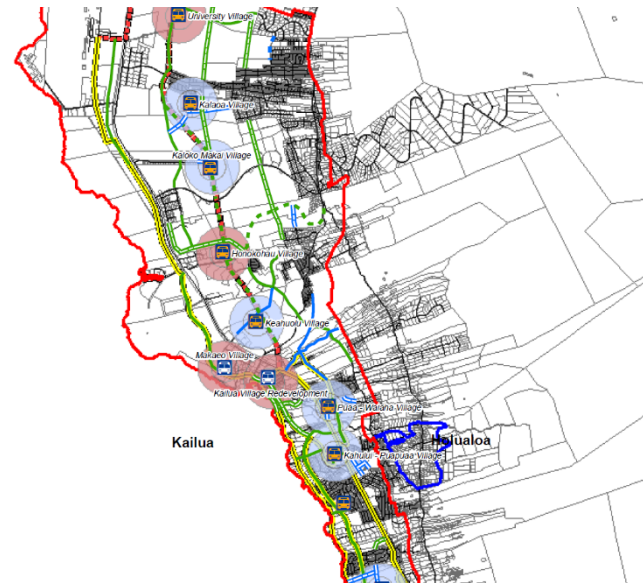


IPA Scenario





- Incentivized growth in concentrated areas
- Prioritized agriculture, conservation and/or hazard avoidance

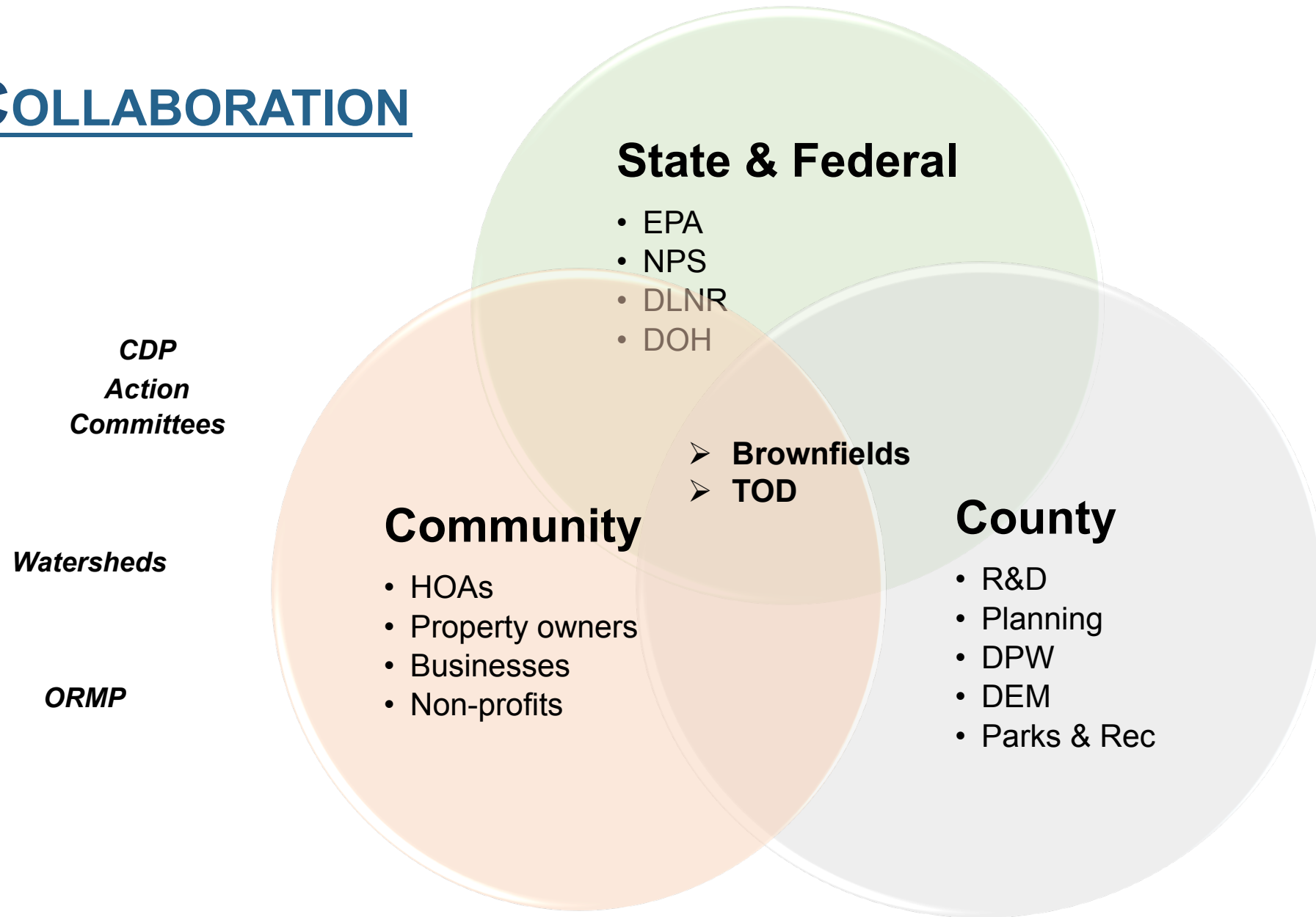


Great Planning & Development Requires Collaboration

Hawai'i County Brownfields Workshop



COLLABORATION



A vibrant sunset scene over the ocean. The sun is a bright yellow orb on the horizon, casting a golden glow across the sky and water. The sky is filled with soft, orange and pink clouds. The ocean is dark blue with gentle waves. The word "Mahalo" is written in a large, blue, hand-drawn script font with a white outline, centered in the upper half of the image. A thin blue line underlines the word.

Mahalo

**County of Hawai'i - Planning
Department**