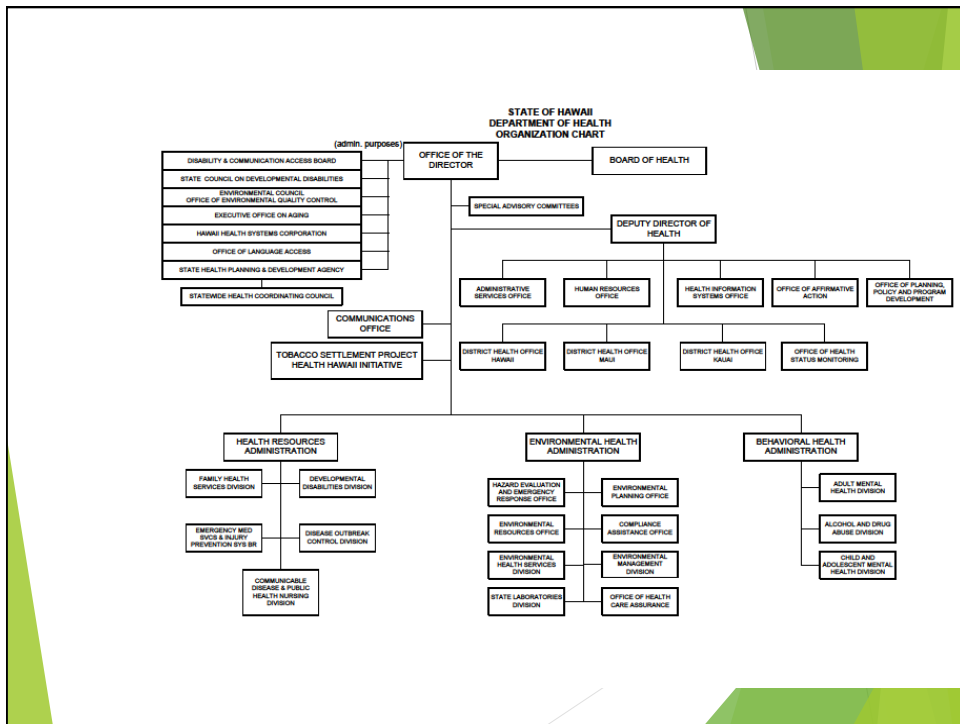
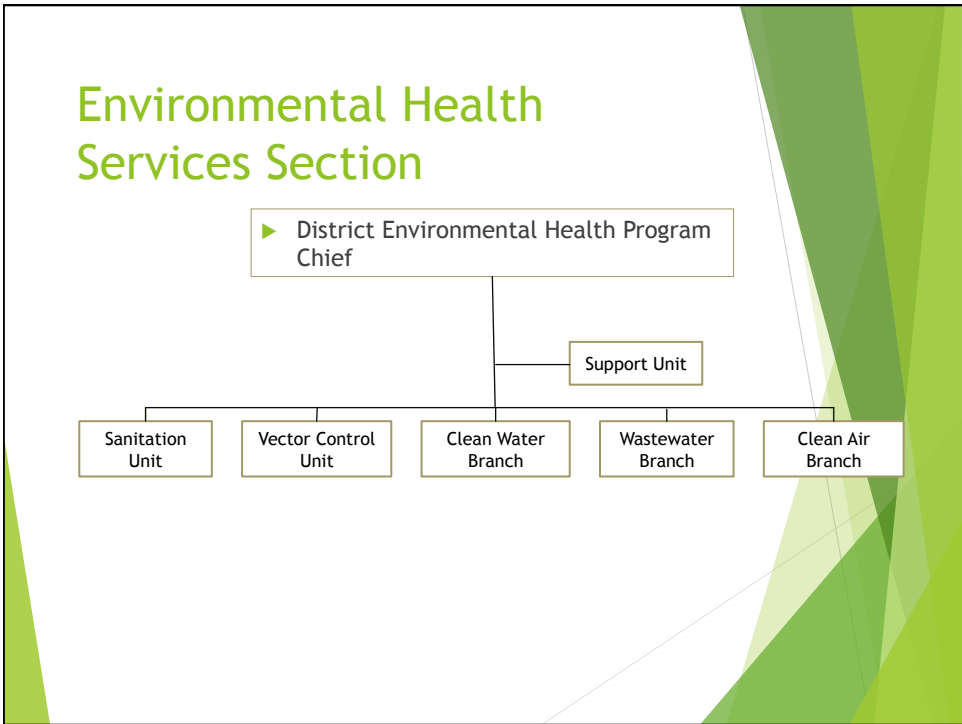
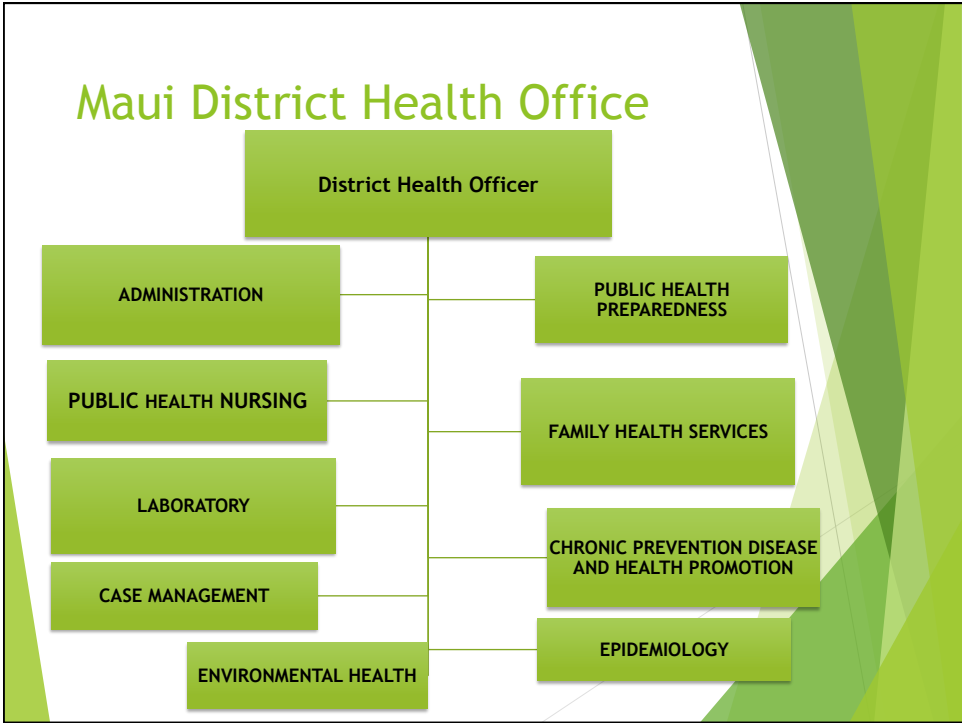


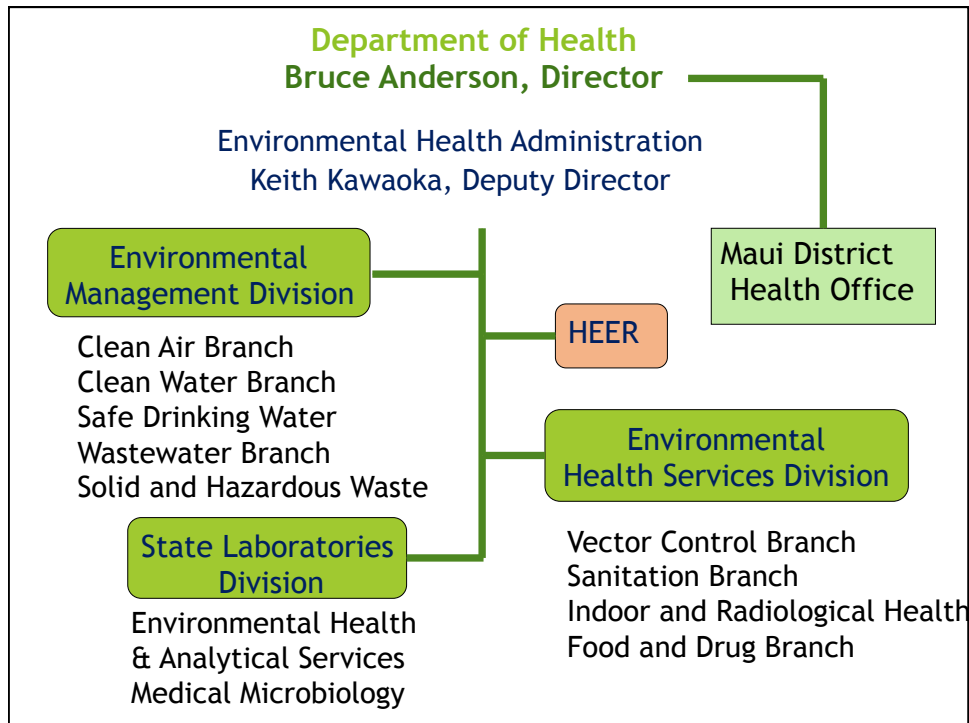
Maui County Brownfields Workshop July 12, 8018

Fenix Grange
Program Manager
Hazard Evaluation and Emergency Response Office

Dr. Lorrin Pang
District Health Officer
Maui District Health Office







Hazard Evaluation and Emergency Response Office

Protecting Human Health and the Environment

- Discover, understand risks and protect
- 128D and CERCLA require polluters and property owners ensure the safety of their properties
- We prioritize where, when and how contamination should be cleaned up
- Oversee military, public and private lands
- We approve safe and protective remedies

HEER on Maui Site Discovery, Assessment and Remediation

Site Discovery: What happened here?

Assessment: What are the hazards?

Remediation: How do we make it safe for the intended use?
How do we keep it safe?

- ✓ Local history and Sampling of Opportunity
 - ✓ Consultations
 - ✓ Fast Track Cleanups
- ✓ Voluntary Response Program
 - ✓ Liability Protections
 - ✓ State of the art guidance

HEER on Maui SDAR - Kahului Harbor EHMP

