

**REPORT TO THE TWENTY-FIFTH LEGISLATURE
STATE OF HAWAII
2009**

**PURSUANT TO CHAPTERS 128D AND 128E, HAWAII REVISED STATUTES
REQUIRING THE DEPARTMENT OF HEALTH TO REPORT
ENVIRONMENTAL RESPONSE LAW AND
HAWAII EMERGENCY PLANNING AND COMMUNITY RIGHT TO KNOW ACT
FINANCIAL AND ENVIRONMENTAL SITE INFORMATION
FY 2008**

PREPARED BY:

**DEPARTMENT OF HEALTH
STATE OF HAWAII
DECEMBER 2008**

This page is left intentionally blank.

EXECUTIVE SUMMARY

REPORT ON THE ENVIRONMENTAL RESPONSE REVOLVING FUND FOR FISCAL YEAR 2008

Report on Chapter 128D, HRS, Environmental Response Law and 128E, HRS Hawaii Emergency Planning and Community Right-to Know Act

This report, prepared by the State of Hawai'i Department of Health (DOH), Environmental Health Administration (EHA), Hazard Evaluation and Emergency Response (HEER) Office, complies with Chapters 128D and 128E, Hawai'i Revised Statutes (HRS) requiring the DOH to report to the State Legislature on the Environmental Response Law and Hawai'i Emergency Planning and Community Right to Know Act.

The report presents an accounting of FY 2008 128D, HRS Environmental Response Revolving Fund (ERRF) budget and expenditures, with descriptions of key program activities for five Environmental Health Administration (EHA) programs. ERRF 128D, HRS funds are used for the following purposes.

- Removal or remedial actions consistent with Chapter 128D to deal with oil spill and hazardous substances releases.
- Oil spill planning, prevention, preparedness, education, research, training, removal, and remediation.
- Direct support for county used oil-recycling programs.
- To support environmental protection and natural resource protection programs; including but not limited to energy conservation and alternative energy development; and to address concerns related to air quality, global warming, clean water, polluted runoff, solid and hazardous waste, drinking water, and underground storage tanks (UST), including support for the UST program of the department and funding for the acquisition by the State of a soil remediation site and facility.

The report also presents an accounting of 128E, HRS Hawaii Emergency Planning and Community Right to Know Act (HEPCRA) Tier II filing fees collected and distributed in FY 2007 and 2008, and distributed for FY 2009.

Environmental Response Revolving Fund Support to Five Environmental Health Administration Programs

Five programs in the Environmental Health Administration (EHA) received ERRF funding during FY 2008. They are the Hazardous Evaluation and Emergency Response (HEER) Office, Environmental Management Division (EMD), Clean Water Branch (CWB), Safe Drinking Water Branch (SDWB), and the Solid and Hazardous Waste Branch (SHWB).

Budgets were appropriated to the Hazard Evaluation and Emergency Response (HEER) Office (\$3,262,663), the Environmental Management Division (EMD) (\$54,997), the Clean Water Branch (CWB) (\$279,939), the Safe Drinking Water Branch (SDWB) (\$724,933), and the Solid and Hazardous Waste Branch (SHWB) (\$617,858). Total ERRF appropriation for the five programs was \$4,940,390.

The State expended \$4,344,062 of \$5,140,390 appropriated to fund the five HTH 849 and HTH 840 environmental programs. The individual draw-downs from the ERRF were \$2,648,636 to the Hazard Evaluation and Emergency Response Office, \$3,955 to the Environmental Management Division, \$298,528 to the Clean Water Branch, \$760,087 to the Safe Drinking Water Branch, and \$632,857 to the Solid and Hazardous Waste Branch. Revenue to the ERRF totaled \$3,352,373.

The listing of sites required under 128D, HRS are presented at the end of this document.

The list of Hawai'i Sites Eligible Under the Comprehensive Environmental Response Compensation and Liability Act (CERCLA) shows there are currently three sites listed on EPA's CERCLA National Priority List (NPL) for cleanup, and nineteen sites for possible listing under CERCLA.

The Department of Health Hawai'i State Response Program List of Priority Sites presents all Hawai'i sites identified for potential or known non-emergency response actions managed by the HEER Office Site Discovery, Assessment, and Remediation Section Remedial Project Managers (RPMs). The list shows 469 sites are managed within the HEER Office.

The DOH Hawai'i SRP Priority List of Sites shows 464 sites with potential or known hazardous substance or petroleum contamination. Thirty-five sites were determined to require No Further Action (NFA). Seventeen of those sites receiving NFA during FY 2008 will be monitored for land use restrictions.

HEER Office Remedial Project Managers (RPMs) continue active oversight on 405 assessment and response actions.

The Department of Health [Hawai'i State Response Program Release Notification Log](#) contains a listing of all emergency hazardous substance and petroleum release notifications received by DOH HEER Office during the fiscal year.

The Hazardous Evaluation and Emergency Response (HEER) Office received a total of 328 notifications

including 197 oil sheen notifications for the historic Chevron's Pipeline at Waiiau CT10 area. Notifications for potential or actual releases of Comprehensive Environmental Response Compensation and Liability Act (CERCLA) hazardous substance(s) or petroleum related substances numbered 117. HEER Office State On Scene Coordinators (SOSCs) performed direct oversight on 56 cases requiring on-site visits or off-scene coordination.

FY 2008 DOH ENVIRONMENTAL PROGRAM HIGHLIGHTS

Hazard Evaluation of Ecological and Human Health Risk

In FY 2008 HEER Office staff gave presentations at a state Brownfields forum and national environmental conferences in California and New York on the investigation of pesticide contamination in former agricultural land slated for new development. The staff updated guidance on risks posed by arsenic and dioxin contamination in former agricultural areas. They also provided technical support to other branches of the Environmental Management Division of DOH on issues that ranged from the reuse of H-Power Ash and municipal waste for commercial purposes to the impacts of vog on water supplies potentially affected by emissions from Kilauea volcano.

Hazard Evaluation of Ecological and Human Health Risk at Halema'uma'u Crater

On March 12, 2008 a new vent opened at Halema'uma'u Crater. Communities in many parts of the Island of Hawai'i, especially in the southern region, became exposed to high concentrations of sulfur dioxide and particulate matter emitted from the volcano. The increased emissions at Halema'uma'u Crater resulted in a coordinated response by Civil Defense and Department of Health, to provide emergency response guidance on health based levels for sulfur dioxide.

In addition to the emergency response levels for sulfur dioxide due to acute respiratory health effects, a surveillance system for emergency department visits on the Island of Hawai'i was established by HEER and staff at Emergency Medical Services in consultation with a medical toxicologist at the Rocky Mountain Poison and Drug Center.

Due to the urgency of the increased emissions from Kilauea, DOH requested assistance from the Center for Disease Control (CDC) to help assess the potential long term health effects. A team of scientists from CDC provided onsite technical assistance in August 2008. A report summarizing the CDC team's findings was received in November 2008.

Improved Site Discovery Process

HEER Office implemented an improved site discovery process to streamline sampling of potentially contaminated areas and rapid evaluation of environmental hazards.

Conversion of Former Agricultural Lands to Residential Use

The HEER Office has increased oversight of the investigation of former agricultural lands for residential and commercial redevelopment in FY 2008. Technical guidance was prepared and made available to the public to ensure that the investigations provide needed data in a timely and cost-effective manner as possible.

Brownfields Grants and the Brownfields Cleanup Revolving Loan Fund (BCRLF)

HEER Office provides ongoing assistance to the island of Hawai'i and City and County of Honolulu, who are currently working on active brownfields assessment grants. The office also has an ongoing partnership with the Office of Planning, DBEDT, Maui County, and City and County of Honolulu to provide cleanup loans to eligible property owners.

HEER Office Hosts Brownfield Forums

HEER Office continues to host annual Brownfield Forums to facilitate redevelopment of potentially contaminated properties in 2008. The third annual forum was held in October, 2007 and was attended by over 200 participants, including stakeholders from the public and private sectors, banking, environmental consulting, insurance, development and community concerns.

Testing of Drinking Water for Lead in Child Care Facilities

The Safe Drinking Water Branch awarded a contract to test the lead levels in drinking water at all licensed child care facilities. Water fixtures where children obtained drinking water and food preparation water is supplied were targeted in accordance with the

3 T's for Reducing Lead in Drinking Water in Child Facilities, published by EPA. The Safe Drinking Water Branch, the Department of Human Services, and the contractor, AMEC Earth and Environmental, Inc. are working closely together in this special effort to investigate the lead levels in the tap water for a vulnerable part of the population.

Expanding Assistance to Owners and Users of Residential Rainwater Catchments Systems

As the result of a housing boom and the rising cost of infrastructure, Safe Drinking Water Branch has seen a tremendous increase in the number of homes proposing to utilize rainwater catchment systems on the Big Island. It is projected that the Big Island has the potential of having as many as 60,000 lots served by rainwater catchment systems.

The Safe Drinking Water Branch supported the College of Tropical Agriculture and Human Resources by helping to sponsor a conference on catchment systems. The American Rain-Water Catchment System Association held its national conference at the Kilauea Military Camp on the Big Island in August 2007.

The recent activity at the Halema'uma'u crater has caused increased concerns over the impacts of

volcanic gases and ash on rainwater catchment systems located downwind. In order to evaluate the possible impacts, SDWB has been monitoring the raw, rainwater catchment supplies utilized by public water systems on the island of Hawaii using preliminary ash data from the United States Geological Survey.

Sites Improved Under the RCRA Land Revitalization Program Managed by Solid and Hazardous Waste Branch

Former Wood Treating Operators: Facilities such as Hale Kauai and Hawai'i Wood Preserving are undergoing closure of their contaminated properties to make way for new activities and revitalization of their properties.

Makua Military Reservation, Oahu: Makua Military Reservation continues to be a highly charged site. The army has agreed that upon cessation of training, and the land being transferred back to the state, the army will do a complete closure of the site.

Underground Storage Tank Release Sites:

The Underground Storage Tank Program continues to work with the U.S. Environmental Protection Agency and responsible parties in revitalizing sites with releases from underground storage tanks.

This page is left intentionally blank.

128D, HRS ENVIRONMENTAL RESPONSE LAW REPORT

ENVIRONMENTAL RESPONSE REVOLVING FUND HTH 849 AND HTH 840 FUNDING, BUDGET, AND EXPENDITURE

Chapter 128D, HRS, Environmental Response Law, requires that the department submit an annual report to the legislature on environmental response revolving fund (ERRF) monies budgeted and expended for implementing remedial action plans.

Five programs in the Environmental Health Administration (EHA) received ERRF funding during FY 2008. They are the Hazardous Evaluation and Emergency Response (HEER) Office, Environmental Management Division (EMD), Clean Water Branch (CWB), Safe Drinking Water Branch (SDWB), and the Solid and Hazardous Waste Branch (SHWB).

The "environmental response tax" established in the Fuel Tax Law, 243-3.5, HRS revenue supports the ERRF established in Chapter 128D, HRS. This is a state tax of five cents per barrel, or fractional part of a barrel, of petroleum product sold by a distributor to any retail dealer or end user, other than a refiner of petroleum product. Fines and penalties for environmental violations, grants, legislative appropriations, and costs recovered from response actions also support the ERRF. 128D, HRS ERRF funds are used for:

- Removal or remedial actions consistent with Chapter 128D to deal with oil spill and hazardous substances releases.
- Oil spill planning, prevention, preparedness, education, research, training, removal, and remediation.

- Direct support for county used oil-recycling programs.
- To support environmental protection and natural resource protection programs; including but not limited to energy conservation and alternative energy development; and to address concerns related to air quality, global warming, clean water, polluted runoff, solid and hazardous waste, drinking water, and underground storage tanks (UST), including support for the UST program of the department and funding for the acquisition by the State of a soil remediation site and facility.

Report on De Minimis Settlements

Chapter 128D, HRS, Environmental Response Law, requires that the department report annually on any de minimis settlements. During FY 2008 there were no de minimis settlements.

Environmental Response Revolving Fund Revenue

Table 1 presents the actual revenue collected as of June 30, 2008.

Table 1 Environmental Response Revolving Fund Revenue

| Revenue Source | HTH 840 S339H | HTH 849 S342H | Total |
|--|------------------|------------------|-----------|
| Environmental Response Tax | - | 1,695,473 | 1,695,473 |
| Investment Pool Account | 14,397 | 268,314 | 282,711 |
| Fees. Filing of Tier II Chemical Inventory | - | 106,964 | 106,964 |
| Fees, Voluntary Response Account | - | 4,050 | 4,050 |
| Circuit Court | - | 750 | 750 |
| Violations of Air Pollution Law | - | 329,300 | 329,300 |
| Violations of Hazardous Waste Law | - | 871,940 | 871,940 |
| Violations of Water Pollution Law | - | 34,230 | 34,230 |
| Violations of Solid Waste Law | - | 4,800 | 4,800 |
| Transfers from Special Funds Revenue | - | 1,750 | 1,750 |
| Violations of Community Noise Control Law | - | 20,405 | 20,405 |
| Total S339H (HTH 840) and S342H (HTH849) | 14,397 | 3,337,976 | 3,352,373 |

ENVIRONMENTAL HEALTH ADMINISTRATION BUDGET AND EXPENDITURE SUMMARY FOR FIVE ENVIRONMENTAL PROGRAMS

Budgets were appropriated to the Hazard Evaluation and Emergency Response (HEER) Office (\$3,262,663), the Environmental Management Division (EMD) (\$54,997), the Clean Water Branch (CWB) (\$279,939), the Safe Drinking Water Branch (SDWB) (\$724,933), and the Solid and Hazardous Waste Branch (SHWB) (\$617,858). Total ERRF appropriation for the five programs was \$4,940,390.

The State expended \$4,344,062 of \$5,140,390 appropriated to fund the five HTH 849 and HTH 840 environmental programs. The individual draw-downs from the ERRF were \$2,648,636 to the Hazard Evaluation and Emergency Response (HEER) Office, \$3,955 to the Environmental Management Division, \$298,528 to the Clean Water Branch, \$760,087 to the

Safe Drinking Water Branch, and \$632,857 to the Solid and Hazardous Waste Branch. Revenue to the ERRF totaled \$3,352,373.

Table 2 through 7 presents a summary of the amounts appropriated, allocated, and expended for all and each of the five EHA programs. Three fund groups (A, B, and C) are listed. Data for salaries and fringe are shown in the A funds category. Data for travel, contracts, supplies, and construction are shown in the B funds category. Data for equipment are shown as C funds. The amounts presented for allocated and appropriated monies may differ due to normal accounting and union adjustments to the budget.

Table 2 ERRF Budget and Expenditure for Five EHA Programs

| | FY 2008 Appropriation | FY 2008 Allocation | FY 2008 Expenditure / Encumbrance |
|-----------------|--------------------------|-----------------------|---|
| HEER-HTH 849-FD | | | |
| A Funds | 1,112,250 | 1,145,911 | 1,180,125 |
| B Funds | 2,150,413 | 2,120,413 | 1,415,266 |
| C Funds | - | 30,000 | 53,245 |
| HEER Subtotal | 3,262,663 | 3,296,324 | 2,648,636 |
| EMD-HTH 840-FE | | | |
| A Funds | 54,997 | 55,997 | 3,000 |
| B Funds | - | - | 955 |
| C Funds | - | - | - |
| EMD Subtotal | 54,997 | 55,997 | 3,955 |
| CWB-HTH 840-FG | | | |
| A Funds | 114,939 | 116,939 | 138,528 |
| B Funds | 160,000 | 160,000 | 160,000 |
| C Funds | 5,000 | 5,000 | - |
| CWB Subtotal | 279,939 | 281,939 | 298,528 |
| SDWB-HTH 840-FH | | | |
| A Funds | 569,940 | 598,940 | 680,807 |
| B Funds | 154,993 | 154,993 | 79,280 |
| C Funds | - | - | - |
| SDWB Subtotal | 724,933 | 753,933 | 760,087 |
| SHWB-HTH 840-FJ | | | |
| A Funds | 602,858 | 624,036 | 631,704 |
| B Funds | 15,000 | 15,000 | 1,153 |
| C Funds | - | - | - |
| SHWB Subtotal | 617,858 | 639,036 | 632,857 |
| Total | 4,940,390 | 5,027,229 | 4,344,062 |

Table 3 Hazard Evaluation and Emergency Response (HEER) Office

| HEER-HTH 848-FD | FY 2008 Appropriation | FY 2008 Allocation | FY 2008 Expenditure / Encumbrance |
|--|--------------------------|-----------------------|---|
| A Funds | 1,112,250 | 1,145,911 | 1,180,125 |
| 1 Toxicologist I, SR 26 | | | |
| 1 Toxicologist I, SR 26 (T) | | | |
| 1 Ecological Risk Assessor, SR 26 (T) | | | |
| 1 Planner V, SR 24 | | | |
| 1 Epidemiological Specialist IV, SR 22 | | | |
| 2 Env. Health Specialist V, SR 24 | | | |
| 7 Env. Health Specialist IV, SR 22 | | | |
| 2 Env. Health Specialist IV, SR 22 (T) | | | |
| 1 Secretary II, SR 14 | | | |
| 1 Clerk Typist II, SR 08 | | | |
| 18 | | | |
| B Funds | 2,150,413 | 2,120,413 | 1,415,266 |
| C Funds | - | 30,000 | 53,245 |
| HEER Office Total | 3,262,663 | 3,296,324 | 2,648,636 |

Hawaii State Response Program: HEER Office manages the Hawaii State Response Program with funding from the ERRF, General fund, and federal grant appropriations. These combined funds provide for state leadership in addressing releases of hazardous substances and/or petroleum into the environment.

EPA State Response Program Grant: The HEER Office continues to receive funding from the EPA State Response Program (SRP) grant under Section 128(a) of the Small Business Liability Relief and Brownfields Revitalization Act of 2002 (SBLBRA). This SRP grant provides crucial funding for capacity building and program development activities. In 2008, SRP funding allowed DOH to develop new investigation and cleanup policies, implement statewide investigation of arsenic and other agricultural contaminants, and provide outreach to other agencies and the regulated community through partnership trainings, forums, and other activities associated with the assessment, cleanup, and redevelopment of brownfields sites and with actual or perceived contamination.

EPA PA/SI Grant: The EPA Preliminary Assessment/Site Inspection Partnership Agreement between the State and EPA Region 9 funds state site discovery efforts combined with federal CERCLA (Superfund) evaluation of sites. Sites that are

evaluated through the PA/SI system are rated to determine their eligibility for the National Priority List. In 2008, the HEER Office received EPA approval to use PA/SI funding to conduct rapid site screenings using a sampling of opportunity approach.

Federal Cleanup Programs: HEER Office participates in two federal cleanup programs. The office performs oversight services to the military on sites located on federal property and managed and funded under the Department of Defense/State Memorandum of Agreement (DSMOA) Program. HEER Office also manages assessment and cleanup activities for sites delegated to the Formerly Used Defense Sites (FUDS) Program that is funded by the DSMOA.

The DSMOA program was established by the federal government to cover reimbursement of costs incurred by the state in providing oversight services to the Department of Defense (DOD) installations conducting environmental cleanup activities funded under the Defense Environmental Restoration Program (DERP). DSMOA funds are given to the State based on the State's request for advanced or reimbursement payment. If there is need for additional funding the Cooperative Agreement allows for the renegotiation for increased funding.

Table 4 Environmental Management Division (EMD)

| EMD-HTH 840-FE | FY 2008 Appropriation | FY 2008 Allocation | FY 2008 Expenditure / Encumbrance |
|---|--------------------------|-----------------------|---|
| A Funds | 54,997 | 55,997 | - |
| <u>1</u> Information Technology Specialist V, SR 24 | | | |
| 1 | | | |
| B Funds | - | - | - |
| C Funds | - | - | - |
| EMD Total | 54,997 | 55,997 | - |

EMD: The ERRF funds an Environmental Management Division (EMD) network manager position. The network manager supports and maintains the Local Area Network/Wide Area Network (LAN/WAN) connections for the division. Key support is provided to the Environmental Health Administration

(EHA) One Stop project and the Safe Drinking Water Branch (SDWB) Safe Drinking Water Information System (SDWIS/State) project. A major milestone during FY 2008 was the completion of the migration from Novell Network to Windows Active Directory Network.

Table 5 Clean Water Branch (CWB)

| CWB-HTH 840-FG | FY 2008 Appropriation | FY 2008 Allocation | FY 2008 Expenditure / Encumbrance |
|---|--------------------------|-----------------------|---|
| A Funds | 114,939 | 116,939 | 138,528 |
| 1 Information Technology Specialist IV, SR 22 | | | |
| <u>1</u> Env. Health Specialist IV, SR 22 | | | |
| 2 | | | |
| B Funds | 160,000 | 160,000 | 120,000 |
| C Funds | <u>5,000</u> | <u>5,000</u> | <u>-</u> |
| CWB Total | 279,939 | 281,939 | 258,528 |

CWB: The ERRF funds an Environmental Health Specialist (EHS) IV position and an Information Technology Specialist (ITS) IV position for the Clean Water Branch (CWB). The EHS position tasking insures monitoring data submitted by CWB permitted facilities meets acceptable standards for sampling, transportation, and reporting as required by DOH policies and under EPA rules. The ITS performs tasks to integrate various federally required data systems, and provide technical support to the CWB staff in the areas of data recording and reporting.

The Legislature also continued funding of the separate \$150,000 Hawai'i Association of Conservation Districts (HACD) contract funds to support three Conservation Specialists positions on the neighbor islands and Oahu. These positions assist the CWB's Polluted Runoff Control program by providing technical assistance and oversight in the control of non-point source pollution resulting from activities in areas such as agriculture, urban, commercial, boating, and dealing with the general public. FY 2008 funds were used to extend the HACD contract for the Conservation Specialists on Oahu, Kauai and Waimea.

Table 6 Safe Drinking Water Branch (SDWB)

| SDWB-HTH 840-FH | FY 2008 Appropriation | FY 2008 Allocation | FY 2008 Expenditure / Encumbrance |
|---|--------------------------|-----------------------|---|
| A Funds | 569,940 | 598,940 | 680,807 |
| 3 Env. Engineer IV, SR 24 | | | |
| 1 Env. Health Specialist III, SR 20 | | | |
| 2 Clerk Typist II, SR 08 | | | |
| 1 Underground Injection Control Geologist II, SR 28 | | | |
| 2 Underground Injection Control Geologist I, SR 24 | | | |
| 1 Underground Injection Control Clerk, SR 08 | | | |
| 1 Information Technology Specialist IV, SR 22 | | | |
| 11 | | | |
| B Funds | 154,993 | 154,993 | 78,566 |
| C Funds | - | - | - |
| SDWB Total | 724,933 | 753,933 | 759,373 |

SDWB: The ERRF continued to support Safe Drinking Water Branch personnel and activities related to the protection of public health and drinking water quality through many activities during FY 2008. These funds support activities that have both direct and indirect drinking water protection benefits.

The ERRF currently supports a staff of three geologists and one clerk-typist who administer the Hawai'i Underground Injection Control (UIC) Program for approximately 1,200 facilities (project files) statewide.

The ERRF supports two environmental engineers who implement major drinking water regulations. One administers the Lead and Copper Rule, its revisions, and other related activities, while the other handles the Long Term 1 and 2 Enhanced Surface Water Treatment Rules and the Stage 1 and 2 Disinfectants/Disinfection By-Products Rules.

The ERRF also support an environmental health specialist and a clerk-typist involved in drinking water monitoring activities.

The ERRF supports a staff of two, an environmental engineer and a clerk-typist, to administer the Certification of Operators of Public Water Systems process. This staff compiles and maintains files on all existing certified operators, receives and prepares all applications for Board review, receives and processes

all certification and testing fees, prepares the examinations, prepares all correspondence, conducts training, administers examinations, and tracks other state programs to see how they handle specific issues and more.

ERRF also supports the certification process by funding necessary neighbor island travel of Board members who represent Neighbor Island operators and suppliers, pays for membership in the Association of Board's of Certification (ABC) which provides certification examinations and grades them (two DSO and two WTPO exams annually), and supports other certification activities such as the provision of math refresher classes, and provides travel funds for staff to proctor certification examinations on the Neighbor islands.

The ERRF supports the Safe Drinking Water Branch Information Technology Specialist who is assigned the task of preparing the Safe Drinking Water Branch for the implementation of the Safe Drinking Water Information System/State data management system.

Other program addressed with ERRF funding are the Capacity Development Program, Assistance to Owners and Users of Rain-Water Catchments Systems program, Circuit Rider Program, and Continuing Education Program for Drinking Water System Operators.

Table 7 Solid and Hazardous Waste Branch ERRF Budget and Expenditure

| SHWB-HTH 840-FJ | FY 2008 | FY 2008 | FY 2008 |
|--|---------------|------------|------------------------------|
| | Appropriation | Allocation | Expenditure / Encumbrance |
| A Funds | 602,858 | 624,036 | 631,704 |
| 1 Env. Engineer IV, SR 24 (SW) | | | |
| 2 Env. Health Specialist IV, SR 22 (HW) | | | |
| 1 Env. Health Specialist IV, SR 22 (LUST) | | | |
| 1 Env. Health Specialist III, SR 20 (LUST) | | | |
| 1 Env. Health Specialist IV, SR 22 (UST) | | | |
| 3 Env. Health Specialist III, SR 20 (UST) | | | |
| 1 Clerk Typist II, SR 08 (UST) | | | |
| 10 | | | |
| B Funds | 15,000 | 15,000 | 1,153 |
| C Funds | - | - | - |
| SHWB Total | 617,858 | 639,036 | 632,857 |

SHWB: The ERRF supports ten Solid and Hazardous Waste Branch personnel and activities focused on:

- Used oil management and recycling
- Special waste management, management of Leaking Underground Storage Tank (LUST) sites
- Inspection of Underground Storage Tank (UST) facilities
- Oversight of the County's Oil Recycling Program

The Environmental Health Specialist (EHS) IV Permit Writer, who is supported by the oil fund, provides oversight of contaminated facilities undergoing ground water monitoring.

The Special Waste permitting engineer is responsible for permitting and monitoring activities over a wide range of special waste management facilities.

The Environmental Health Specialist (EHS) III has an active caseload of 57 LUST sites at this time and provides project oversight to all remedial efforts of his cases. The EHS IV provides team unit leadership for three other EHS III staff. The EHS IV also works on additional active LUST sites.

128E, HRS HAWAII EMERGENCY PLANNING AND COMMUNITY RIGHT-TO KNOW ACT (HEPCRA) REPORT

HEPCRA TIER II FILING FEES

The Department of Health presents this Chapter 128E, HRS Hawaii Emergency Planning and Community Right to Know Act (HEPCRA) fiscal year report. HEPCRA requires that an owner or operator of a facility that stores, uses, or manufactures above defined thresholds, any hazardous substance, or extremely hazardous substance, is required to file a notification of such "Tier II" activity, and to pay a filing fee.

HEER Office staff assesses Tier II reports submitted annually by facility owners and collects the fees that are then deposited into the ERRF. The staff provides administrative support to the Hawaii State Emergency Response Commission (HSERC) and technical assistance to the Local Emergency Planning Committees (LEPCs) on Hawaii, Oahu, Kauai, and

Maui in support of HEPCRA statewide activities to prepare for and respond to chemical and oil spills in the environment.

The amount of fees projected to be collected for fiscal year 2009 is likely to remain the same. This projection is based on the number of Tier II submittals received during GY 2007 and 2008.

Tier II filing fees were collected and distributed as noted below to the LEPCs after deductions for the HSERC operating expenses. Reporting on the collection of fees is reported for the year following the year fees were collected. For example, fees reported for FY 2008 in the amount of \$106,964, were collected during FY 2007.

Table 8 HEPCRA Tier II Filing Fees Collected FY 2007-2009 and Distributed FY 2009

| <u>Tier II Filing Fees</u> | <u>Number of Facilities</u> | <u>Amount Collected</u> | <u>Amount Distributed</u> |
|--|---------------------------------|-----------------------------|-------------------------------|
| FY 2007 | 970 | 72,900 | 66,968 |
| FY 2008 | 979 | 106,964 | 41,789 |
| FY 2009 projected | | 110,000 | |
| Funds Distributed to LEPCs for FY 2009 | | | |
| Honolulu | | | 29,489 |
| Hawai'i | | | 15,764 |
| Maui | | | 11,410 |
| Kauai | | | 10,305 |
| Total | | | 66,968 |

REPORT ON KEY ENVIRONMENTAL PROGRAM ACTIVITIES

HAZARD EVALUATION, EMERGENCY RESPONSE, AND SITE CLEANUPS IMPROVED

Hazard Evaluation of Ecological and Human Health Risk Key Activities

The HEER Office provides ecological and human health risk assessment, conducts toxicological assessments of chemical threats to human health, establishes appropriate cleanup levels for chemical contamination, and assists the public with information concerning the health effects of chemicals.

In FY 2008 HEER Office staff gave presentations at a state Brownfields forum and national environmental conferences in California and New York on the investigation of pesticide contamination in former agricultural land slated for new development. HEER staff updated guidance on risks posed by arsenic and dioxin contamination in former agricultural areas. They also provided technical support to other branches of the DOH Environmental Management Division on issues that ranged from the reuse of H-Power Ash and municipal waste for commercial purposes to the impacts of vog on water supplies potentially affected by emissions from Kilauea volcano.

In FY 2008, staff provided risk assessment support and responded to a diversity of inquiries concerning potential health hazards. These inquiries included questions regarding heavy metals (e.g., mercury, lead, arsenic), pesticides, indoor and outdoor air pollutants (e.g., mildew, cleaners, paints), and other illnesses potentially related to the environment.

Educational materials on lead exposure were provided to parents and residents living on a site contaminated with lead in Waianae. Staff also handled inquiries on fish and mercury by responding to calls from the public as well as obstetrics/gynecology physician's offices.

University of Hawai'i VOG Study

U.S. Centers for Disease Control and Prevention's (CDC's) National Center for Environmental Health (NCEH) money was provided DOH to assess the health effects of volcanic emissions. Beginning in September 2005, DOH contracted with the University of Hawai'i John A. Burns School of Medicine (JABSOM) to conduct research on the health effects of volcanic emissions. The study led by Dr. Elizabeth Tam, focused on the relative effects of volcanic air pollution on cardiopulmonary health. The study found no significant adverse cardiopulmonary health outcomes due to exposure to volcanic emissions. Since the research was done prior to the new Halema'uma'u vent opening, the study results may not be representative of current conditions. A new grant provided directly to Dr. Tam by CDC will focus on the long term health effects of vog on about 2000 children living on the Island of Hawai'i.

Environmentally Related Illness and Injury Reporting and Surveillance (Pesticides and Heavy Metals)

Under the authority of Section 321-311, HRS, Environmentally-Related Illness and Injury surveillance, the DOH Hazard Evaluation and Emergency Response (HEER) Office is required to collect information on Pesticide and Heavy Metal Poisoning. Beginning in September 2007, a group of pesticide and heavy metal analytes were added to the Electronic Communicable Disease Reporting System (ECDRS) electronic data feed from clinical laboratories on Hawai'i to the Department of Health (DOH), Disease Outbreak Control Division (DOCD), Disease Investigation Branch (DIB). Previously to setting up the electronic data feed, HEER was receiving hard copy lab results as late as 4 to 6 months after the specimen collection date. Analysis of the hard copy results indicated that they were incomplete compared to the electronic results. Efforts are underway to produce a web based front end application that will provide data entry, display, and report capabilities for the adult lead data as well as arsenic, mercury, cadmium and pesticide data.

Childhood Blood Lead Levels

Beginning in September 2007, HEER began tracking children with elevated blood levels exceeding 10 ug/dl. Children with blood lead levels exceeding 10 ug/dl were referred to the Indoor and Radiological Health Branch where their home environment was evaluated. Tests performed between September 2007 to July 1, 2008 showed 13 children out of approximately 4,843 children tested had blood lead levels exceeding 10 ug/dl. HEER is working with Maternal and Child Health to prepare a report of the results for submission to CDC. HEER is coordinating with other branches within the DOH to ensure that the children with elevated lead levels get appropriate resources.

Adult Blood Lead Epidemiology and Surveillance Reporting

A semiannual report to NIOSH, covering the period from September 16, 2007 through March 15, 2008, was submitted. There was only one case of an excessively high level of lead during the period, a male employee at Pearl Harbor Naval Shipyard. Its unusual circumstances were mentioned at the national ABLES meeting in Denver, Colorado, on June 9-10, 2008.

Center for Disease Control Real Time Disease Detection Grant

DOH was awarded a grant from the CDC to work with the Rocky Mountain Poison Center (RMPC) to gather real-time data from Hawai'i Poison Hotline to define events of public health significance with special emphasis on chemical surveillance. In June 2008, (RMPDC) implemented a real-time disease detection system for Hawai'i that relies primarily on telephone reports to Hawai'i Poison Hotline. Disease detection definitions were developed jointly with Hawai'i governmental agencies including DOH HEER Office, Emergency Medical Services (EMS), Hawai'i Department of Health, Chemical Terrorism Response Laboratory of the Hawai'i Department of Health, and Hawai'i Department of Agriculture (HDOA) Pesticides Branch. The real time detection system targets chemical exposures. Email alerts are sent to the HEER office when calls indicate potential events of public health significance.

Emergency Preparedness and Response Key Actions

The HEER Office Emergency Preparedness and Response (EP&R) Section along with the four State On-Scene Coordinators (SOSC) are responsible for planning and preparing for, and responding to releases of hazardous substance(s) and/or oil that may cause immediate and substantial threat to human health or the environment. The SOSCs have been trained to enter hazardous atmospheres in self contained breathing apparatus (SCBA) and various types of personal protective equipment. SOSCs are on 24-hour call as back-up personnel to first responder County HAZMAT teams.

During FY 2008, the HEER Office received 410 notifications which were directly concerned with the release of hazardous chemicals or oil spills. Of the 410 notifications reported, 56 required a site response by a State On-Scene-Coordinator (SOSC) and/or a major off-scene coordination and response effort.

Additional information about the environmental program and available documents can be obtained at the Department of Health web site at:
<http://hawaii.gov/health/environmental/hazard/environmental/hazard/index.html>.

Oil Spill Preparedness

DOH in partnership with the Clean Islands Council (CIC), developed additional units for a semi-mobile oiled wildlife facility. A laundry unit, a food preparation unit, and emergency power trailers were added so the existing bird stabilization unit so the facility may be easily moved to the location of any incident.

Hawaiian Electric Company Diesel Spill

On the morning of June 25, 2007 the HEER Office received notification of a 5,900 gallon diesel spill from a generator tank line at the Campbell Industrial Park substation. The oil overflowed the containment and spread over a large ground area. The site was cleaned up through extensive excavation.

UH Research Vessel Kaimikai-O-Kanaloa Diesel Spill

On the morning of October 11, 2007, the University of Hawaii Research Vessel Kaimikai-O-Kanaloa (KOK) reported seeing pink diesel in the water between the KOK and its Pier 45 Snug Harbor tie up. The KOK had been thoroughly bottom inspected and fueled prior to leaving for a task in the Leeward Islands and was pumping off grey water to the sewer connection pier side. The spill was immediately boomed off per the vessel spill plan, contractor support was called in, and notifications were made.



Kaimikai-O-Kanaloa

Tank sounding indicated 7,400 gallons of diesel #2 was missing from the on board fuel tank and diesel was present in the adjacent grey water tank. Diesel was found in the sewer line and sump pump. No cracks were found in the hull. The sewer line was dug up and improper joints were found and replaced. Cleanup lasted a month and nearly all diesel was recovered.



Under Honolulu Harbor Pier

Barbers Point Harbor Diesel Spill

An oil spill was reported in the Barbers Point Harbor on the morning of February 23, 2008 with an unknown cause and source of the spill. Over-flights observed a large oil sheen in Barbers Point Harbor and stretching out the channel west toward Ko'Olina Resort and the power plant. A slight odor of diesel was reported. The Ko'Olina marina and lagoons were impacted.

Investigation determined that the diesel fuel had spilled during a discharge from a tanker to TESORO Oil or Aloha Petroleum fuel lines ashore, or during a transfer from TESORO Oil tanks to a tank barge. Clean Islands Council conducted the spill cleanup. It was estimated that the spill amount was 1,000 gallons of light diesel. The spilled oil matched the oil that was transferred ashore and back to a barge. Pipeline tests, vessel tank soundings, and a hull inspection did not indicate the cause of the spill. The investigation is still ongoing.



Barbers Point Harbor



Ko'Olina Marina

Site Discovery, Assessment, and Cleanup Programs

Potentially contaminated and known contaminated Hawai'i State Response Program listed sites undergoing assessment, removal, or remedial action are managed within the HEER Office under one of four programs. They are the (1) Hawai'i Response Program, (2) Hawai'i Brownfields Revitalization Program, (3) Hawai'i Voluntary Response Program, and (4) EPA CERCLA Preliminary Assessment/Site Inspection (PA/SI) Program. Over time and depending upon eligibility, funding, and level of responsible party participation, a site may be managed within HEER Office under one or more of these programs starting with the site assessment phase and if required by the State, through to cleanup completion.

Key State Cleanup Actions

Honolulu Harbor

The Honolulu Harbor/Iwilei District cleanup project continues to make significant progress in the cleanup of separate phase hydrocarbon (SPH) and other contamination.

Notable milestones by IDPP include:

- Completion of complex, three dimensional characterization of petroleum plume in OU1C and OU2.
- Ongoing product removal and completion of pipeline tapping and draining effort under Nimitz Highway.
- Public meetings to solicit comment on draft RAMs completed for two major operating units, OU1C and OU2. Final decision documents expected in early 2009.

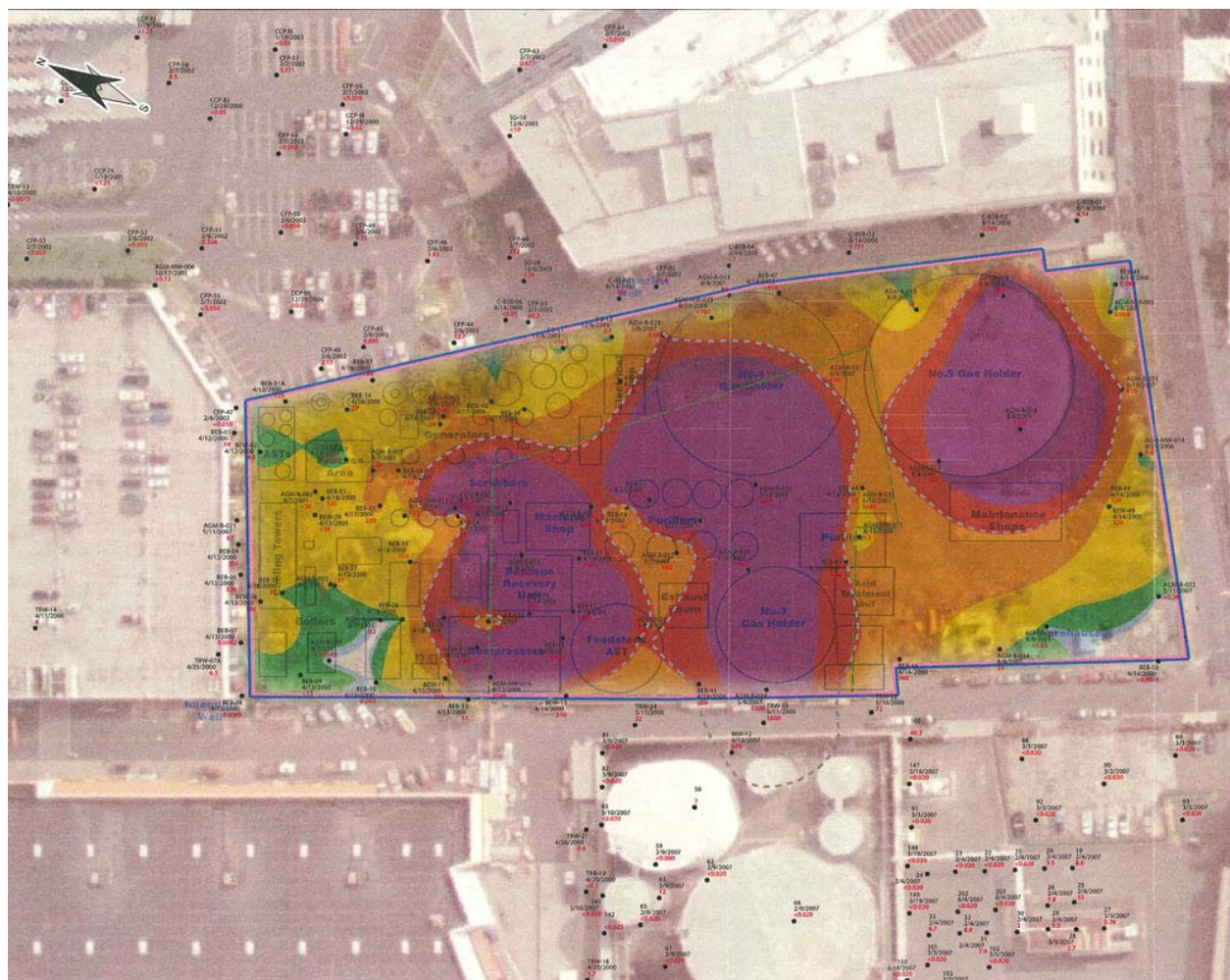
Public meetings to solicit comment on draft RAMs completed for two major operating units, OU1C and OU2. Final decision documents are expected in early 2009.

BHP GASCO Benzene Site, Oahu

The Agreement on Remedial Action for this site has been transferred from BHP Hawaii to Weston, Inc. The remedial investigation and risk assessment reports are expected shortly. A remedial alternative analysis report will evaluate other potential remedial alternatives and make a decision about next steps at the site.



*Honolulu Harbor Iwilei District Pipelines in
HECO Trench Near Flora Dec*



Honolulu Harbor Iwilei District Benzene Plume at Gasco Site

East Kapolei, Oahu

There is a small, one-acre parcel that was a former pesticide mixing area that has high levels of dioxin, and will need to be remediated. DOH is working closely with Department of Land and Natural Resources (DLNR) and Department of Hawai'ian Home Lands (DHHL) to implement an interim remedy at the mixing area. Further work will be required at this site prior to redevelopment.

Key Federal Cleanup Milestones

The HEER Office oversees all investigations and cleanups undertaken by the Department of Defense under HRS 128(D) and the federal Superfund program (CERCLA).

Key milestones at military installations this year are listed below. In addition to these highlighted activities, assessments, investigations and cleanup activities are ongoing at many individual sites on each major installation.

Key Air Force Site Cleanup Decisions

Eight Records of Decision including:

- Site CG110 (Aircraft Maintenance/Carburetor Cleaning Area)
- Site LF24, Pier Dump, Bellows AFS

Key Army Site Cleanup Decision

Record of Decision:

- Tripler Army Medical Center Landfill, Site 02

Key Navy Site Cleanup Decisions

Records of Decision:

- Multiple transformer sites across Pearl Harbor
- Multiple transformer sites across NCTAMS
- Ford Island Building 284, and Former Buildings 80 & 302.
- Former Drum Crushing Area, Former NAS Barbers Point

Pearl Harbor Update

The Pearl Harbor Naval Complex was placed on EPA's National Priority List (NPL) in 1992. The site consists of hundreds of individual investigations that are being conducted concurrently. In many cases, the Navy has opted to use removal actions to quickly address high priority environmental concerns, while working on a parallel course with EPA to complete the full CERCLA requirements needed to reach final closure on the contaminated sites.

EPA invoked dispute resolution with the Navy in May 2007 over the sediment investigation in Pearl Harbor due to concerns about data gaps in the investigation. Intensive, cooperative work between EPA, DOH and the Navy has led to submittal of a draft work plan to resolve the dispute and finalize the sediment investigation.

Key Hawaii State Response Program Programmatic Accomplishments

Voluntary Response Program

The Voluntary Response Program (VRP) encourages voluntary cleanup of contaminated properties. Under 128D, HRS, DOH has the authority to grant prospective purchasers or developers an exemption from future liability if cleanup is performed to DOH specifications under the program. Past, current, or future property

owners can participate in this program, but exemptions from liability can only be given to future purchasers or tenants. Completion of the voluntary cleanup action is accompanied by a Letter of Completion (LOC), issued by the Department of Health and noted on the property deed. There are a total of 18 active VRP sites in the program.

Responsible parties with sites participating in the VRP are paying the State for DOH oversight of their remedial activities. In FY 2008, the VRP program recovered \$27,200 in program costs from responsible parties.

Site Discovery and Sampling of Opportunity

As a part of the new Site Discovery Program, Sampling of Opportunity was conducted at several former sugar operations along the Hamakua Coast. Sampling took place at former pesticides storage, mixing and operational areas. This early sampling approach allows DOH to rapidly assess potential hazards from newly discovered sites, and thereby prioritize appropriate agency response.

Cost Recovery

HRS 128D provides legal authority to cost recover for DOH oversight of remedial activities at contaminated sites in Hawai'i. In FY 2008, DOH received \$66,695 in payment for oversight expenses for the Honolulu Harbor and GASCO cleanup sites in accordance with the terms of the respective Agreements for Remedial Action.

Final Rules Adopted for Decontamination of Illegal Drug Manufacturing Sites

In accordance with Act 170, SLH, 2006, the HEER Office adopted interim rules and guidelines for the decontamination of illegal drug manufacturing sites on September 6, 2006. After researching the issue nationwide and recommending modification, the Department adopted and the Governor approved final rules on November 16, 2007.

CLEAN WATER BRANCH CAPABILITIES IMPROVED

Clean Water Branch Sewage Spill Notification Web Site Improved

ERRF funding to the Clean Water Branch (CWB) was utilized to improve the warning and sewage spills on the DOH web site. The CWB employs a "Clean Water"

hotline (586-5826) and web page to warn of contaminated waters. The website also shows water testing results.

SAFE DRINKING WATER BRANCH PROTECTION OF PUBLIC HEALTH AND DRINKING WATER QUALITY IMPROVED

SDWB Key Activities

During FY 2008, SDWB focused ERRF funding on the following major activities to protect public health and drinking water quality.

- Continued the migration of both State and County drinking water chemical testing data into the Safe Drinking Water Information System /State database.
- During FY 2008, all but two public water systems demonstrated compliance with the 90th percentile Lead and Copper action levels at consumers' taps.
- Fulfilled a federal requirement to submit a report to the Governor of the State of Hawai'i on the Capacity Development Program.
- Completed 31 sanitary surveys of public water systems throughout the State.
- Completed a contract to conduct the sanitary surveys of four Maui surface water systems including the Wailuku, Makawao, Upper and Lower Kula water systems.
- Initiated a contract to conduct the sanitary surveys of the North and South Kona water systems.
- Awarded a contract to extensively test all child-care facilities in the state for the lead content of their drinking water.
- Received 129 Underground Injection Control applications, issued 26 approvals to construct, 58 operating permits, and closed 61 injection well facilities.

Lead and Copper Rule Administration

Throughout FY 2008, all but 2 public water systems in the state had lead and copper concentrations in the tap water below the 90th percentile action levels.

In FY 2008, the SDWB contracted AMEC Earth and Environmental, Inc. to perform lead testing of tap water at all licensed child care facilities in Hawaii. With the assistance and cooperation of the Department of Human Services and child care facilities staff, AMEC sampled water from fixtures where children obtained drinking water and where food preparation water was supplied. The water samples were then collected and sent to Weck Laboratories (City of Industry, California) for analysis. The results and other supporting information were provided to facility staff and parents. Follow-up samples and additional actions were taken

when lead concentrations exceeded twenty (20) parts per billion (ppb), in accordance with the recommendations contained in the U.S. EPA's 3 T's for Reducing Lead in Drinking Water in Child Care Facilities.

AMEC has been progressing ahead of schedule is expected to complete both the statewide sampling and the report summarizing the program, including the total number of facilities by island that were sampled, the number of samples taken, and a breakdown of those samples with lead concentrations exceeding 20 ppb is expected to be completed in FY 2009

Development and Maintenance of Disinfectant/Disinfection By-Products Rules and Enhanced Surface Water Treatment Rules

The Disinfectant/Disinfection By-Products and the Enhanced Surface Water Treatment suite of rules currently work together to increase public health protection by increasing protection from exposure to the targeted microbes, Giardia and Cryptosporidium, in drinking water, while assuring that the disinfectant and resulting disinfection by-product levels in the water are kept at safe levels.

Protection of Existing and Potential Underground Sources of Drinking Water (Hawai'i Underground Injection Control Program)

The Disinfection/Disinfection By-Products and the Enhanced Surface Water Treatment suite of rules currently work together to increase public health protection by increasing protection from exposure to the targeted microbes, Giardia and Cryptosporidium, in drinking water, while assuring that the disinfectant and resulting disinfection by-product levels in the water are kept at safe levels.

Certification of Operators of Public Water Systems

Drinking water is protected through the Certification of Operators of Public Works program. The program was established to ensure that staff operating the public water systems has sufficient training to do their duties properly. Chapter 340F of the Hawai'i Revised Statutes requires all public water systems to have operators certified at the appropriate level to operate either water treatment plants or distribution systems. If a system has both, they must have certified operators in both categories. Hawai'i's program consists of a five-member Board of Certification, appointed by the Governor, which meets quarterly to set policy, act on all applications for certification, assign continuing education units to training events, and more.

At the end of FY 2008, the program had 182 certified water treatment plant operators and 466 certified distribution system operators. Some operators maintain dual certifications.

Assistance to Owners and Users of Rain-Water Catchments Systems

During 2008, the Safe Drinking Water Branch continued to respond to inquiries by individuals using rainwater catchments systems on a wide variety of subjects. Many individuals had questions concerning the maintenance of their systems. Some did not have any experience at all with rainwater catchments. Others called to report results of testing that they had done to determine whether or not additional remedial actions were required or to determine what range of actions were available or made sense.

The Safe Drinking Water Branch supported the University of Hawai'i at Hilo which hosted the American Rainwater Catchment System Association's 2007 National Conference on August 14-17, 2007 at the Kilauea Military Camp. This conference featured experts from all over the nation and the world on rainwater harvesting and use. In addition, it provided an excellent opportunity for people in the community to meet with these experts and learn from their collective knowledge about the many aspects of rainwater catchment and use.

The recent activity at the Halema'uma'u crater has caused increased concerns over the impacts of volcanic gases and ash on rainwater catchment systems located downwind. In order to evaluate the possible impacts, SDWB has been monitoring the raw, rainwater catchment supplies utilized by public water systems on the island of Hawaii. So far, the results appear to be consistent with the unofficial ash analyses performed by the United States Geological Survey, with low levels of cadmium and aluminum detected in the rainwater. A special study is being developed to similarly evaluate rainwater catchment in communities impacted by the increased volcanic emissions.

Safe Drinking Water Information System (SDWIS/State)

The SDWB successfully implemented an electronic data exchange system for direct exchange of EPA and state data. Data in Safe Drinking Water Information System/State, version 8 (SDWIS/State Version 8) is processed through the data validation and extraction program known as FedRep, which prepares and qualifies information for transmission through the DOH Environmental Health Administration (EHA) exchange network to EPA's Central Data Exchange (CDX) so inventory and compliance data may be submitted to EPA's SDWIS-Fed. From SDWIS Fed, the information will go into the federal data warehouse. Significant progress has been made migrating various sources of data into the system as we prepare to move to SDWIS

Web Release 1.0 (SWRL 1) and then to SDWIS Web Release 2.0 (SWRL 2).

Capacity Development Program

In response to the U.S. EPA's publication of a "National Capacity Development Strategic Plan" in January 2008, the Branch completed an update of the State's "Capacity Development Strategic Plan for Existing Public Water Systems" in June 2008. Additionally, the Branch revised its pre-construction and startup capacity evaluation guidance for the first time since October 2001, drawing on the lessons learned on past and existing projects, as well as providing more specific guidance to prospective water systems on how to better address TMF capacity issues in today's challenging economic and regulatory climate.

Circuit Rider Program

The circuit rider program managed by the SDWB requires that an individual experienced in water system operation visit privately owned small water systems on a periodic basis. The Safe Drinking Water Branch entered into a five-year contract with a non-profit organization to implement the circuit rider program in October 2004. Originally covering privately-owned water systems serving under 3,300 persons, the contract was subsequently expanded to double the number of circuit rider visits per quarter, and allow circuit rider assistance to all systems statewide (except for county and military system serving over 10,000 people), resulting in an increased awareness of TMF needs statewide and a higher level of regulatory and compliance understanding by the assisted water systems.

The circuit rider - program provides a variety of services as follows:

- Assist water system operators in correcting any operational problems.
- Train operators on how to prevent contamination of their water source(s) and storage tank(s).
- Help managers understand the drinking water regulations.
- Help prepare new water system operators for the national certification examination.
- Provide assistance to improve the capacity of the system.

Safe Drinking Water Branch staff has noted positive results when performing sanitary surveys of water systems previously visited by the circuit rider.

Continuing Education Program for Drinking Water System Operators

The Safe Drinking Water Branch worked with the University of Hawai'i's Outreach College to develop and implement a long-term continuing educational training program for drinking water system operators throughout the state so water system operators may maintain their certification. During FY 2008, the University of Hawai'i provided at least eight contact hours of training on Kauai, Oahu, Maui, Lanai, Molokai, and Hawai'i.

SDWB also worked with the National Rural Water Association to develop a Series of certification training courses that was offered on Oahu, Kauai, Molokai, Maui, and Hawaii, both Kona and Hilo. Fourteen

courses, each with 3 contact hours, were offered at every site for seven months.

Finally, a library of operator study guides and reference books was established to help operators or operators-in-training prepare or study for their operator certification exams. In a related effort to promote safety and continuing education, the SDWB arranged with the Department of Labor and Industrial Relations, Safety and Health Division Reference Library (a.k.a., Hawaii Occupational Safety and Health Division Reference Library) to house an extensive collection of DVDs on various safety topics in water systems operations.

SOLID AND HAZARDOUS WASTE BRANCH WASTE MANAGEMENT RECYCLING, MONITORING, AND PERMITTING IMPROVED

Used Oil Management and Recycling

The Solid and Hazardous Waste Branch (SHWB) provides oversight of contaminated facilities undergoing ground water monitoring (Chevron Refinery, Tesoro Refinery, Hawai'ian Western Steel and Chemwood). The Department receives between 3-4 applications annually for used oil facilities. Renewal of expiring permits is ongoing. Non-permitted used oil handlers are usually identified through complaints and during hazardous waste inspections.

Special Waste Management

SHWB staff is responsible for permitting and monitoring activities over a wide range of special waste management facilities including petroleum contaminated soil (PCS) remediation facilities. Another major focus is the permitting and oversight of Auto Salvage facilities where a primary concern is the proper management of gasoline, oil and other automotive fluids removed from the vehicles. Currently the Engineer has responsibility for more than 27 permitted entities, which deal directly or indirectly with oil related issues.

Management of Leaking Underground Storage Tank Sites

The SHWB total number of active Leaking Underground Storage Tank (LUST) sites is 226. The Environmental Health Specialist (EHS) III has an active caseload of 57 LUST sites at this time and provides project oversight to all remedial efforts of his cases. The EHS IV provides team unit leadership for three other EHS III staff. The EHS IV also works on additional active LUST sites.

Inspection of Underground Storage Tank Facilities

SHWB staff continues to conduct operational inspections at UST facilities and issue field citations as necessary. These inspections include review of release detection records, documents demonstrating evidence of financial responsibility, and spill and overflow prevention equipment and corrosion protection standards. The goal of these inspections is to prevent releases of petroleum and hazardous substances from UST systems and to minimize the volume of release if one does occur.

The field citation is similar to a traffic ticket and is issued for easily verifiable and correctable violations. The citation penalty amounts are lower than traditional enforcement tools. Citations are usually issued in the field at the time of an inspection. The owner or operator must return to compliance and pay the penalty within 30 days of issuance of the citation.

Assistance is provided to consultants and contractors who request and review UST facilities files. Timely review of facility files assists the banking, real estate, and petroleum industry to complete transactions involving the sale or return of properties that were affected by petroleum releases.

Oversight of County's Oil Recycling Program

The public is very much aware of the environmental issues and the Department continues to receive and respond to used oil complaints and illegal dumping on all islands. Since July 2007, the Hazardous Waste Section has received and responded to 16 used oil related complaints.

ERRF FUNDING TO SPECIAL ENVIRONMENTAL PROGRAMS

During FY 2008, ERRF funding was allocated through the HEER Office to special state programs managed within the Department of the Attorney General, Department of Health Environmental Management Division Solid and Hazardous Waste Branch, and the University of Hawai'i.

Environmental Crimes Enforcement Reorganization

The Environmental Crimes Unit (ECU) within the Department of the Attorney General was formally disbanded on June 30, 2008, after four plus years of operation. The mission of the ECU was to identify, apprehend, and successfully convict significant violators of environmental law. The ECU consisted of two investigators, and the Department of the Attorney General also assigned two deputy attorneys general to prosecute environmental crimes.

The ERRF funded the ECU for those four plus years with about \$170,000 per year. In 2008 DOH decided to shift funding to support clean energy in Hawaii, the Governor's top priority, and \$112,000 (Act 208/2008) of ERRF moneys will fund the new full time renewable energy facilitator position in DBEDT.

Although the ECU has been disbanded, criminal environmental law enforcement will continue. The Attorney General's Office will continue to investigate and vigorously prosecute environmental crimes. DOH will continue to refer cases to the AG for possible prosecution and supply information and expertise as needed. The only difference is that DOH will no longer have first call on 2 investigators' time, as they have been re-assigned to general detail. DOH will continue to collaborate with the U.S. EPA on cases and participate in the multi-agency Hawaii Environmental Enforcement Meetings led by EPA.

Solid and Hazardous Waste Branch Oversight of County's Oil Recycling Program Continues

The ERRF set aside \$200,000 for the management of used oil from Do-It-Yourself (DIY) operators. Maui, Kauai, and Hawai'i Counties are appropriated money to operate their respective DIY programs and to educate the public on proper used oil disposal options. Since the grant program started, Honolulu County has chosen not to apply for the grant money.

Hawai'i Energy Policy Forum Memorandum of Agreement between DOH and University of Hawai'i Completed

The DOH funded the Hawai'i Energy Policy Forum (HEPF) based at the University of Hawai'i at Manoa during the period 2005 to 2008 through a HEER Office legislative appropriation of \$100,000 from ERRF. A final report was submitted to HEER Office in June 2008.

The HEPF brought together representatives from business, utilities, education, government, environmental organizations, and the community, including large energy customers for inclusive, collaborative energy planning and policymaking.

Ten Point Plan

1. Expand Renewable Energy Opportunities
2. Promote Conservation and Energy Efficiency
3. Reduce Green House Gas Emissions in Hawai'i
4. Foster Civic Action and Participation
5. Enhance Regulatory Goals and Protections
6. Encourage Culturally Appropriate and Sustainable Energy Planning
7. Improve Energy Efficiencies and Options in Transportation
8. Support Research and Development of Alternative Energy Sources (hydrogen wave energy, etc.)
9. Support Sustainable Development and Use of Biofuels
10. Ensure the Security and Reliability of Energy Supply and Distribution

Through a process of discussion, research, and analysis, compromise, consensus, and collaboration, HPEF developed and implemented the forward-looking vision and a 10 Point Plan. The plan was implemented by actions such as meetings, workshops, forums, and briefings to legislators, governmental agencies. Studies and assessments were completed in response to legislative requests such as Biomass-and-Biofuels-to Power, Chicago Climate Exchange findings, and State of Hawai'i Energy Efficiency in Transportation Strategies. To facilitate energy efficiency and

renewable energy resources throughout the state, HEPF commissioned a study of all state and county laws to determine the obstacles to their implementation. A documentary, "Hawai'i Climate Crisis", was co-sponsored and aired three times in early 2008. A much requested DVD was distributed to 224 organizations and individuals, including policymakers.

HAWAII STATE RESPONSE PROGRAM SITE LIST

LIST OF HAWAII SITES ELIGIBLE FOR REMEDIAL ACTION UNDER THE EPA'S CERCLA

Chapter 128D, HRS, *Environmental Response Law* requires that the department publish a listing to identify Hawaii sites eligible for remedial action under the Comprehensive Environmental Response Compensation and Liability Act (CERCLA).

There are currently three sites in Hawaii listed on EPA's CERCLA National Priority List (NPL) for cleanup. Schofield Barracks was de-listed on August 10, 2000.

| | <u>Island</u> | <u>Locality</u> | <u>Facility Site Name</u> |
|----|---------------|-----------------|---|
| 1. | Oahu | Kunia | Del Monte Oahu Plantation NPL Site |
| 2. | Oahu | Pearl Harbor | Naval Computer and Telecommunication Area Master Station (NCTAMS) |
| 3. | Oahu | Pearl Harbor | Pearl Harbor Naval Complex |

Sites that may be eligible for possible listing under CERCLA are presented below and managed by the HEER Office Preliminary Assessment/Site Inspection (PA/SI) Program Remedial Project Managers (RPMs).

| | <u>Island</u> | <u>Locality</u> | <u>Facility Site Name</u> |
|-----|---------------|-----------------|---|
| 1. | Hawaii | Hakalau | Hakalau Air Strip |
| 2. | Hawaii | Pahala | Kau Sugar Company (Hawaiian Agricultural Company) Kau Sugar Mill |
| 3. | Hawaii | Paauhau | Hamakua Sugar Company, Inc. Paauhau Seed Dipping Plant |
| 4. | Hawaii | Paauilo | Paauilo Seed Dipping Plant Paauilo Seed Dipping Plant |
| 5. | Hawaii | Pepeekeo | Pepeekeo Airstrip |
| 6. | Kauai | Lihue | Lihue Plantation Combined Sites |
| 7. | Oahu | Kunia | Del Monte Oahu Plantation Poamoho Tract Poamoho Rag Disposal Area |
| 8. | Hawaii | Paauilo | Hamakua Mill Company Paauilo Sugar Mill |
| 9. | Kauai | Lawai | Lawai Valley Cannery |
| 10. | Hawaii | Hakalau | Mauna Kea Agribusiness Company Lands Hakalau Seed Dipping Plant |
| 11. | Hawaii | Paauhau | Paauhau Sugar Plantation Paauhau Sugar Mill |
| 12. | Hawaii | Papaikou | Papaikou Sugar Mill |
| 13. | Kauai | Koloa | McBryde Sugar Company Lands Koloa Sugar Mill |
| 14. | Maui | Olowalu | Pioneer Mill Co Ltd Olowalu Shaft Transformer Substation |
| 15. | Maui | Lahaina | Pioneer Mill Co Ltd Launiupoko Transformer |
| 16. | Maui | Paia | Paia Sugar Mill |
| 17. | Hawaii | Waipunalei | Hamakua Sugar Company Waipunalei Seed Dipping Plant |
| 18. | Maui | Kahului | E and E Black Contractors |
| 19. | Oahu | Kailua | Kapaa Landfill |

LIST OF HAWAII STATE RESPONSE PROGRAM PRIORITY SITES

Chapter 128D, HRS, Environmental Response Law, Section 7, HRS mandates that a State List of Sites be published annually listing the sites with potential or known hazardous substances or pollutants or contaminants.

The DOH Hawaii SRP List of Priority Sites shows 464 sites with potential or known hazardous substance or petroleum contamination. 35 sites were determined to require No Further Action (NFA). 17 of these closed sites have some residual contamination on site after cleanup that can be safely managed with use restrictions. HEER Office Remedial Project Managers (RPMs) continue active oversight on 405 assessment and response actions. An additional 24 sites are being overseen by other agencies or have low levels of contamination.

Sites and activities managed by the military and funded by the Department of Defense/State Memorandum of Agreement are not included on the State Priority List.

Summary data presented in this section for the Hawaii State Response Program (SRP) includes all Hawaii sites identified for non-emergency response actions during FY 2008 and sites planned for file review for determination if an assessment or response action is required under HEER Office authority. Sites are managed within the Hazard Evaluation and Emergency Response (HEER) Office under four program areas depending upon eligibility, funding, and level of responsible party participation as:

1. State Sites,
2. Hawaii Brownfields Revitalization Sites (Brownfields),
3. Hawaii Voluntary Response Program (VRP) Sites, and
4. EPA CERCLA Preliminary Assessment/Site Inspection (PA/SI) Sites.

Over time a site may be managed within HEER Office under one or more program areas starting with the site assessment phase and if required by the State, through to cleanup completion.

Response Program Activity Summary

| <u>Program</u> | <u>Program Action</u> | <u>Site Status</u> | | | | <u>Total</u> |
|--------------------|-----------------------|-----------------------------|----------------------------------|----------------|-----------------|--------------|
| | | <u>NFA Unrestricted Use</u> | <u>NFA with Use Restrictions</u> | <u>Ongoing</u> | <u>Inactive</u> | |
| State | Assessment | 11 | 2 | 259 | 8 | 280 |
| | Response | 5 | 9 | 94 | 15 | 123 |
| Brownfields | Assessment | 1 | | 17 | | 18 |
| | Response | | 1 | 4 | | 5 |
| VRP | Assessment | | | 1 | 1 | 2 |
| | Response | | 5 | 11 | | 16 |
| PA/SI | Assessment | 1 | | 15 | | 16 |
| | Response | | | 4 | | 4 |
| Totals | | 18 | 17 | 405 | 24 | 464 |

The Hawaii SRP List of Priority Sites is sorted in order of Island, Locality, the Program Area, and the Facility/Site Name. The site Status and Potential Hazard are also identified for each Facility/Site. Sites are categorized as a potential hazard when sampling data indicate that contaminant concentrations exceed Hawaii Environmental Action Levels. Generally, these conservative action levels are set to be protective of long term, daily exposures. Hazards are managed by removal or destruction of the contaminants (No Hazard), use restrictions that limit access to the contamination, (Institutional Controls), or physical barriers that limit exposure to the contaminants (Engineering Controls).

Hawaii State Response Program List of Priority Sites - FY 2008

HAWAII STATE RESPONSE PROGRAM SITE LIST

| | <u>Island</u> | <u>Locality</u> | <u>Program Area</u> | <u>Facility/Site Name</u> | <u>Site Status</u> | <u>Program Action</u> | <u>Potential Hazard and Controls in Place</u> |
|-----|---------------|-----------------|---------------------|--|--------------------|-----------------------|---|
| 1. | Hawaii | Haina | State | Hamakua Sugar Company, Inc - Haina Sugar Mill | Ongoing | Assessment | Hazard Managed With Institutional Controls |
| 2. | Hawaii | Hakalau | PA/SI | Hakalau Air Strip | Inactive | Assessment | Hazard Undetermined |
| 3. | Hawaii | Hakalau | PA/SI | Hakalau Sugar Plantation | Ongoing | Response | Hazard Undetermined |
| 4. | Hawaii | Hamakua | State | Agent Orange Application | Ongoing | Assessment | Hazard Undetermined |
| 5. | Hawaii | Hilo | Brownfields | Hilo Rubbish Dump | Inactive | Assessment | Hazard Undetermined |
| 6. | Hawaii | Hilo | Brownfields | Kanoelehua Industrial Warehouse | Ongoing | Assessment | Hazard Undetermined |
| 7. | Hawaii | Hilo | State | 187 Silva Street | Ongoing | Response | Hazard Undetermined |
| 8. | Hawaii | Hilo | State | Alamo Rent A Car, Hilo International Airport | Ongoing | Assessment | Hazard Undetermined |
| 9. | Hawaii | Hilo | State | Aloha Petroleum Hilo Bulk Plant | Ongoing | Assessment | Hazard Undetermined |
| 10. | Hawaii | Hilo | State | Bayside Chevron Service | Ongoing | Assessment | Hazard Managed With Institutional Controls |
| 11. | Hawaii | Hilo | State | Big Island Asphalt Co Inc | Ongoing | Response | Hazard Present |
| 12. | Hawaii | Hilo | State | Equilon Enterprises LLC - Hilo Terminal (Shell Oil Co) | Ongoing | Assessment | Hazard Undetermined |
| 13. | Hawaii | Hilo | State | Haaheo Elementary School | Inactive | Response | Hazard Managed With Institutional Controls |
| 14. | Hawaii | Hilo | State | Hatada Bakery (Former) | Ongoing | Response | Hazard Managed With Institutional Controls |
| 15. | Hawaii | Hilo | State | Hawaii Cane Products Plant - Waiakea Pond | Ongoing | Assessment | Hazard Present |
| 16. | Hawaii | Hilo | State | Hawaii Pest Control | Ongoing | Response | Hazard Undetermined |
| 17. | Hawaii | Hilo | State | HELCO Pipeline Release Hualani Hilo | Ongoing | Assessment | Hazard Undetermined |

Hawai'i State Response Program List of Priority Sites - FY 2008

| | <u>Island</u> | <u>Locality</u> | <u>Program Area</u> | <u>Facility/Site Name</u> | <u>Site Status</u> | <u>Program Action</u> | <u>Potential Hazard and Controls in Place</u> |
|-----|----------------------|------------------------|----------------------------|---|---------------------------|------------------------------|--|
| 18. | Hawaii | Hilo | State | Hilo Airport Aloha Airlines jet fuel spill | Ongoing | Assessment | Hazard Undetermined |
| 19. | Hawaii | Hilo | State | Hilo Arsenic | Ongoing | Response | Hazard Managed With Engineering Controls |
| 20. | Hawaii | Hilo | State | Hilo Bay Front Soccer Field | Ongoing | Assessment | Hazard Undetermined |
| 21. | Hawaii | Hilo | State | Hilo Judiciary Center Project | Ongoing | Assessment | Hazard Managed With Engineering Controls |
| 22. | Hawaii | Hilo | State | Hilo Quality Washerette | Ongoing | Assessment | Hazard Undetermined |
| 23. | Hawaii | Hilo | State | Hilo Terminal 666 Kalaniana'ole Avenue | Ongoing | Assessment | Hazard Undetermined |
| 24. | Hawaii | Hilo | State | Hilo Wood Treating, Inc. | Ongoing | Assessment | Hazard Undetermined |
| 25. | Hawaii | Hilo | State | Kawailani Central Office | Ongoing | Assessment | Hazard Undetermined |
| 26. | Hawaii | Hilo | State | Larry's Waiakea Chevron | Ongoing | Response | Hazard Undetermined |
| 27. | Hawaii | Hilo | State | Stationers Corporation of Hawaii | Ongoing | Assessment | Hazard Undetermined |
| 28. | Hawaii | Hilo | State | Tank 19 | Ongoing | Assessment | Hazard Managed With Institutional Controls |
| 29. | Hawaii | Hilo | State | Tesoro Hawaii Corporation Terminal Department - 595 Kalaniana'ole | Ongoing | Assessment | Hazard Undetermined |
| 30. | Hawaii | Hilo | State | Tesoro Hawaii Corporation Terminal Department - 607 Kalaniana'ole | Ongoing | Assessment | Hazard Undetermined |
| 31. | Hawaii | Hilo | State | Tesoro Hawaii Corporation Terminal Department - 701 Kalaniana'ole | Ongoing | Assessment | Hazard Undetermined |
| 32. | Hawaii | Hilo | State | UH Hilo Pacific Aquaculture and Ocean Resources Center | Ongoing | Assessment | Hazard Undetermined |

Hawai'i State Response Program List of Priority Sites - FY 2008

| | <u>Island</u> | <u>Locality</u> | <u>Program Area</u> | <u>Facility/Site Name</u> | <u>Site Status</u> | <u>Program Action</u> | <u>Potential Hazard and Controls in Place</u> |
|-----|----------------------|------------------------|----------------------------|--|---------------------------|------------------------------|--|
| 33. | Hawaii | Hilo | State | University of Hawaii-Hilo Auto Shop | Ongoing | Assessment | Hazard Undetermined |
| 34. | Hawaii | Hilo | State | Wailoa Small Boat Harbor | Ongoing | Assessment | Hazard Undetermined |
| 35. | Hawaii | Hilo | State | Western Auto Hydraulic Oil | Ongoing | Assessment | Hazard Undetermined |
| 36. | Hawaii | Hilo | State | Wood Protection Company (HPM Building Supply) | Ongoing | Assessment | Hazard Undetermined |
| 37. | Hawaii | Hilo | State | Young Brothers, Pier 2, Hilo | Ongoing | Assessment | Hazard Undetermined |
| 38. | Hawaii | Honokaa | State | DOH Honokaa | Ongoing | Assessment | Hazard Undetermined |
| 39. | Hawaii | Honokaa | State | Hamakua Sugar Company Inc - Honokaa Airstrip | Ongoing | Assessment | Hazard Undetermined |
| 40. | Hawaii | Honokaa | State | Hamakua Sugar Company Inc - Kawela Pesticide Mixing Area | Ongoing | Assessment | Hazard Undetermined |
| 41. | Hawaii | Honokaa | State | Hamakua Sugar Company Inc - Paauhau Seed Cane Dipping Plant | Ongoing | Assessment | Hazard Undetermined |
| 42. | Hawaii | Honokaa | State | Honokaa Medical Center Wastewater Treatment Plant | Inactive | Assessment | Hazard Present |
| 43. | Hawaii | Kailua-Kona | State | Big Island Honda Mercedes Dealership | NFA | Response | Hazard Managed With Institutional Controls |
| 44. | Hawaii | Kailua-Kona | State | Hawaii Petroleum- Kona Branch (Kona Warehouse & Cardlock) | Ongoing | Assessment | Hazard Undetermined |
| 45. | Hawaii | Kailua-Kona | State | Honokohau Industrial Park-Lower Boat Park Soil Contamination | Ongoing | Assessment | Hazard Undetermined |
| 46. | Hawaii | Kailua-Kona | State | Kona Village Resort | NFA | Response | Hazard Managed With Institutional Controls |

Hawai'i State Response Program List of Priority Sites - FY 2008

| | <u>Island</u> | <u>Locality</u> | <u>Program Area</u> | <u>Facility/Site Name</u> | <u>Site Status</u> | <u>Program Action</u> | <u>Potential Hazard and Controls in Place</u> |
|-----|----------------------|------------------------|----------------------------|---|---------------------------|------------------------------|--|
| 47. | Hawaii | Kailua-Kona | State | Snow White Linen, Former | Ongoing | Assessment | Hazard Managed With Engineering Controls |
| 48. | Hawaii | Kamuela | State | Kamuela Baseyard | Ongoing | Assessment | Hazard Undetermined |
| 49. | Hawaii | Kamuela | State | Waimea Quarry | Ongoing | Response | Hazard Undetermined |
| 50. | Hawaii | Kawaihae | State | TOSCO Corporation-Kawaihae Terminal #0317 | NFA | Assessment | No Hazard |
| 51. | Hawaii | Keaau | Brownfields | Keaau Middle School | Ongoing | Assessment | Hazard Undetermined |
| 52. | Hawaii | Keaau | State | Keaau Hotel Site | Inactive | Response | Hazard Managed With Engineering Controls |
| 53. | Hawaii | Keaau | State | Keaau Pahoa Road 118 Acre Parcel | Inactive | Response | Hazard Present |
| 54. | Hawaii | Keaau | State | Keaau Triangle Lot | Ongoing | Response | Hazard Present |
| 55. | Hawaii | Keaau | State | Puna Sugar Mill | Ongoing | Assessment | Hazard Undetermined |
| 56. | Hawaii | Kealahou | State | Kona Community Hospital (Kona Hospital) | Ongoing | Assessment | Hazard Managed With Engineering Controls |
| 57. | Hawaii | Keauhou | State | Keauhou Mechanics Yard | Ongoing | Assessment | Hazard Undetermined |
| 58. | Hawaii | Kohala Coast | State | Former Meridian Hawaii Resort Transportation Facility | Ongoing | Assessment | Hazard Undetermined |
| 59. | Hawaii | Kukaiau | State | Kukaiau pump system releases | Ongoing | Assessment | Hazard Undetermined |
| 60. | Hawaii | Laupahoehoe | State | Hamakua Sugar Company, Inc - Papaaloa Pesticide Mixing Area | Ongoing | Assessment | Hazard Undetermined |
| 61. | Hawaii | Mauna Kea | State | Canada France Hawaii Telescope Observatory | Inactive | Response | Hazard Managed With Engineering Controls |

Hawai'i State Response Program List of Priority Sites - FY 2008

| | <u>Island</u> | <u>Locality</u> | <u>Program Area</u> | <u>Facility/Site Name</u> | <u>Site Status</u> | <u>Program Action</u> | <u>Potential Hazard and Controls in Place</u> |
|-----|----------------------|------------------------|----------------------------|---|---------------------------|------------------------------|--|
| 62. | Hawaii | Naalehu | Brownfields | Residential Property 95-5579 Opukea Street | Ongoing | Assessment | Hazard Undetermined |
| 63. | Hawaii | Naalehu | State | 95-5572 Mamalahoa Highway | Ongoing | Assessment | Hazard Managed With Engineering Controls |
| 64. | Hawaii | Naalehu | State | Hawaii Petroleum Distributors, Inc 200 Gallon Fuel Spill | Ongoing | Assessment | Hazard Undetermined |
| 65. | Hawaii | Ookala | Brownfields | Ookala Gym and Ball Park | Ongoing | Assessment | Hazard Undetermined |
| 66. | Hawaii | Paauhau | PA/SI | Hamakua Sugar Company, Inc - Paauhau Sugar Mill | Ongoing | Response | Hazard Undetermined |
| 67. | Hawaii | Paauilo | PA/SI | Hamakua Sugar Company, Inc - Paauilo Seed Dipping Plant | Inactive | Assessment | Hazard Undetermined |
| 68. | Hawaii | Paauilo | PA/SI | Hamakua Sugar Company, Inc - Paauilo Sugar Mill | Ongoing | Assessment | Hazard Undetermined |
| 69. | Hawaii | Paauilo | State | Hamakua Sugar Company, Inc - Ookala Fuel Station | Ongoing | Assessment | Hazard Undetermined |
| 70. | Hawaii | Paauilo | State | Hawaiian Sugar Planters' Association Research Station - Paauilo | Ongoing | Assessment | Hazard Undetermined |
| 71. | Hawaii | Paauilo | State | Mauna Kea Ranch Overspill Spillage | Inactive | Assessment | Hazard Undetermined |
| 72. | Hawaii | Pahala | PA/SI | Kau Sugar Mill | Ongoing | Assessment | Hazard Undetermined |
| 73. | Hawaii | Pahala | State | ML Macadamia Orchards, LP (Kau Div) | Ongoing | Response | Hazard Managed With Engineering Controls |
| 74. | Hawaii | Papaikou | PA/SI | Hamakua Sugar Company, Inc - Papaikou | Ongoing | Assessment | Hazard Undetermined |
| 75. | Hawaii | Pepeekeo | PA/SI | Pepeekeo Airstrip | Inactive | Response | Hazard Undetermined |
| 76. | Hawaii | Pepeekeo | State | Black Oil and Drum Sites | Ongoing | Response | Hazard Present |

Hawai'i State Response Program List of Priority Sites - FY 2008

| | <u>Island</u> | <u>Locality</u> | <u>Program Area</u> | <u>Facility/Site Name</u> | <u>Site Status</u> | <u>Program Action</u> | <u>Potential Hazard and Controls in Place</u> |
|-----|----------------------|------------------------|----------------------------|---|---------------------------|------------------------------|--|
| 77. | Hawaii | Pepeekeo | State | Hilo Coast Power Company Diesel Fuel Storage Tank | Ongoing | Assessment | Hazard Undetermined |
| 78. | Hawaii | Pepeekeo | State | Petroleum Impacted Soil Downslope of Former HCPC Maintenance Garage | Ongoing | Response | Hazard Present |
| 79. | Hawaii | South Kona | State | Kamehameha Schools Estoy Property | Ongoing | Response | Hazard Present |
| 80. | Hawaii | Volcano | State | Hawaii Volcanoes National Park Aboveground Storage Tank | Ongoing | Assessment | Hazard Undetermined |
| 81. | Hawaii | Waimea | State | Waimea Chevron Food Mart | Ongoing | Assessment | Hazard Undetermined |
| 82. | Hawaii | Waimea | State | Waimea Landfill | Ongoing | Assessment | Hazard Undetermined |
| 83. | Hawaii | Waipunalei | PA/SI | Hamakua Sugar Company, Inc - Waipunalei | Ongoing | Assessment | Hazard Managed With Institutional Controls |
| 84. | Kauai | Barking Sands | State | Kauai Test Facility | Ongoing | Assessment | Hazard Undetermined |
| 85. | Kauai | Ele'ele | State | UST Release at Port Allen | Ongoing | Response | Hazard Present |
| 86. | Kauai | Hanapepe | State | Sakoda Garage | Ongoing | Response | Hazard Present |
| 87. | Kauai | Kalaheo | State | Kalaheo Elementary Phase 1 | Ongoing | Assessment | Hazard Undetermined |
| 88. | Kauai | Kapaa | State | Leonard's, Inc | Ongoing | Assessment | Hazard Undetermined |
| 89. | Kauai | Kapaa | State | Waiakea Road Water Main | Ongoing | Assessment | Hazard Undetermined |
| 90. | Kauai | Kapaa | State | Wailua Homestead Wells 0421-01& 02 | Ongoing | Assessment | Hazard Undetermined |
| 91. | Kauai | Kekaha | State | Kekaha Landfill | Ongoing | Assessment | Hazard Undetermined |
| 92. | Kauai | Kekaha | State | Kekaha Sugar Co, Ltd | Ongoing | Response | Hazard Present |
| 93. | Kauai | Kekaha | State | Kekaha Sugar Co, Ltd - Kekaha Wood Treatment Plant | Ongoing | Response | Hazard Managed With Engineering Controls |

Hawai'i State Response Program List of Priority Sites - FY 2008

| | <u>Island</u> | <u>Locality</u> | <u>Program Area</u> | <u>Facility/Site Name</u> | <u>Site Status</u> | <u>Program Action</u> | <u>Potential Hazard and Controls in Place</u> |
|------|----------------------|------------------------|----------------------------|--|---------------------------|------------------------------|--|
| 94. | Kauai | Koloa | PA/SI | McBride Sugar Company Power Plant 5 Gallon Oil Spill (north shore) | Ongoing | Assessment | Hazard Undetermined |
| 95. | Kauai | Lawai | PA/SI | Lawai Valley Cannery | Ongoing | Assessment | Hazard Undetermined |
| 96. | Kauai | Lihue | Brownfields | Anahola Project Faith | NFA | Response | Hazard Managed With Institutional Controls |
| 97. | Kauai | Lihue | Brownfields | Lihue Plantation Co, Ltd | Ongoing | Assessment | Hazard Present |
| 98. | Kauai | Lihue | State | Gary's Service Station | NFA | Response | No Hazard |
| 99. | Kauai | Lihue | State | Island Self Storage | Ongoing | Assessment | Hazard Managed With Institutional Controls |
| 100. | Kauai | Lihue | State | Koamalu Plantation LLC Condominium | Ongoing | Assessment | Hazard Undetermined |
| 101. | Kauai | Lihue | State | Lihue Airport Aircraft Rescue and Fire Fighting Training Area | Ongoing | Assessment | Hazard Managed With Institutional Controls |
| 102. | Kauai | Lihue | State | Nawiliwili Fuel Distribution Terminal | Ongoing | Assessment | Hazard Undetermined |
| 103. | Kauai | Lihue | State | Nawiliwili Harbor Pier 1 Fuel Contamination | Ongoing | Assessment | Hazard Undetermined |
| 104. | Kauai | Lihue | State | Nawiliwili Harbor Pier 2 Oil Spill | Ongoing | Assessment | Hazard Undetermined |
| 105. | Kauai | Lihue | State | Nawiliwili Harbor Pier 3 Bollard Foundation Construction | Ongoing | Assessment | Hazard Undetermined |
| 106. | Kauai | Lihue | State | Nawiliwili Harbor Pier 3 Improvements | Ongoing | Assessment | Hazard Undetermined |
| 107. | Kauai | Lihue | VRP | Honsador Lumber Facility Nawiliwili | NFA | Response | Hazard Managed With Engineering Controls |
| 108. | Kauai | Lihue, Hawaii | State | Former Ahukini Dump | Ongoing | Response | Hazard Undetermined |

Hawai'i State Response Program List of Priority Sites - FY 2008

| | <u>Island</u> | <u>Locality</u> | <u>Program Area</u> | <u>Facility/Site Name</u> | <u>Site Status</u> | <u>Program Action</u> | <u>Potential Hazard and Controls in Place</u> |
|------|----------------------|------------------------|----------------------------|--|---------------------------|------------------------------|--|
| 109. | Kauai | Puhi | State | Brewer Environmental Industries-Kaumualii Highway | Ongoing | Response | Hazard Present |
| 110. | Kauai | Wailua | State | Coco Palms Sewage Pump Station | Ongoing | Assessment | Hazard Undetermined |
| 111. | Kauai | Wailua | State | Kauai Agricultural Research Center (Agent Orange/Pesticide Sites) | Ongoing | Response | Hazard Present |
| 112. | Kauai | Waimea | State | Kauai Veterans Memorial Hospital | Ongoing | Assessment | Hazard Undetermined |
| 113. | Kauai | Waimea | State | Kokee Air Force Station | Ongoing | Response | Hazard Undetermined |
| 114. | Kauai | Waimea | State | Meadow Gold Dairies, Inc- Waimea | Ongoing | Response | Hazard Undetermined |
| 115. | Kauai | Waimea | State | Waimea Hospital Property | Ongoing | Assessment | Hazard Undetermined |
| 116. | Kure Atoll | Kure Atoll | State | Kure Atoll, U.S. Coast Guard | Ongoing | Response | Hazard Managed With Engineering Controls |
| 117. | Maui | Haiku | State | Pesticide Storage Site Removals Haiku | Ongoing | Assessment | Hazard Undetermined |
| 118. | Maui | Haiku | State | Pesticide Storage Site Removals Pauwela | Ongoing | Assessment | Hazard Undetermined |
| 119. | Maui | Haliimaile | State | Maui Pineapple Co Ltd, Haliimaile Road | Ongoing | Assessment | Hazard Undetermined |
| 120. | Maui | Kahului | PA/SI | E & E Black Contractors | Ongoing | Assessment | Hazard Present |
| 121. | Maui | Kahului | State | Alii Linen Service (fka Snow White Linen) | Ongoing | Response | Hazard Managed With Engineering Controls |
| 122. | Maui | Kahului | State | Bird Builders | Ongoing | Assessment | Hazard Undetermined |
| 123. | Maui | Kahului | State | Central Power Plant Electrical Substation and Transformer Storage Yard | Ongoing | Assessment | Hazard Undetermined |
| 124. | Maui | Kahului | State | Fong Construction | Ongoing | Assessment | Hazard Undetermined |
| 125. | Maui | Kahului | State | Hawaii Wood Preserving Co. | Ongoing | Assessment | Hazard Undetermined |

Hawai'i State Response Program List of Priority Sites - FY 2008

| | <u>Island</u> | <u>Locality</u> | <u>Program Area</u> | <u>Facility/Site Name</u> | <u>Site Status</u> | <u>Program Action</u> | <u>Potential Hazard and Controls in Place</u> |
|------|----------------------|------------------------|----------------------------|--|---------------------------|------------------------------|--|
| 126. | Maui | Kahului | State | Hobron Ave Area (Kahului) | Ongoing | Assessment | Hazard Undetermined |
| 127. | Maui | Kahului | State | Kahului Fuel Distribution Terminal | Ongoing | Assessment | Hazard Undetermined |
| 128. | Maui | Kahului | State | Kahului Terminal | Ongoing | Assessment | Hazard Undetermined |
| 129. | Maui | Kahului | State | Kanaha Pond Industrial West Site | Ongoing | Assessment | Hazard Undetermined |
| 130. | Maui | Kahului | State | Maui Business Park Oil Contamination | Ongoing | Assessment | Hazard Undetermined |
| 131. | Maui | Kahului | State | Maui Well No. 5 | Ongoing | Assessment | Hazard Undetermined |
| 132. | Maui | Kahului | State | MECO Pole-Mount Transformer No. 6930 | Ongoing | Assessment | Hazard Undetermined |
| 133. | Maui | Kahului | State | Rainbow Hauling | Ongoing | Assessment | Hazard Undetermined |
| 134. | Maui | Kahului | State | Sears Auto Center | Ongoing | Assessment | Hazard Undetermined |
| 135. | Maui | Kahului | State | VIP Warehouse | Ongoing | Assessment | Hazard Undetermined |
| 136. | Maui | Kihei | State | Kihei Union 76 Service (No.4655) | NFA | Response | Hazard Managed With Institutional Controls |
| 137. | Maui | Kihei | State | Selland Construction Inc, Kihei Base Yard | Inactive | Response | Hazard Undetermined |
| 138. | Maui | Lahaina | PA/SI | Kamehameha Schools Lahainaluna Road Transformers | Inactive | Assessment | Hazard Undetermined |
| 139. | Maui | Lahaina | PA/SI | Launiupoko Transformer | Inactive | Assessment | Hazard Undetermined |
| 140. | Maui | Lahaina | State | Ammonia Dumping, Maui Disposal Co. | Ongoing | Assessment | Hazard Undetermined |
| 141. | Maui | Lahaina | State | Kapalua Resort Company | Ongoing | Assessment | Hazard Undetermined |
| 142. | Maui | Lahaina | State | MECO submersible Transformer No. 4726 | Ongoing | Assessment | Hazard Undetermined |
| 143. | Maui | Lahaina | State | MECO Transformer Site | Ongoing | Assessment | Hazard Undetermined |
| 144. | Maui | Lahaina | State | Puukolii Old Pioneer Mill Transformers | Inactive | Assessment | Hazard Undetermined |

Hawai'i State Response Program List of Priority Sites - FY 2008

| | <u>Island</u> | <u>Locality</u> | <u>Program Area</u> | <u>Facility/Site Name</u> | <u>Site Status</u> | <u>Program Action</u> | <u>Potential Hazard and Controls in Place</u> |
|------|----------------------|------------------------|----------------------------|--|---------------------------|------------------------------|--|
| 145. | Maui | Lahaina | State | Shaw Street Old Pioneer Mill Transformers | Ongoing | Response | Hazard Present |
| 146. | Maui | Maalaea | State | Maalaea 710 Acre and 906 Acre Site | Inactive | Assessment | Hazard Undetermined |
| 147. | Maui | Maalaea | State | Maalaea Mauka | Inactive | Assessment | Hazard Undetermined |
| 148. | Maui | Maalaea | State | MECO Generating Station Maalaea | NFA | Response | No Hazard |
| 149. | Maui | Olowalu | PA/SI | Luawai Road Transformer | Ongoing | Assessment | Hazard Undetermined |
| 150. | Maui | Olowalu | PA/SI | Olowalu Shaft Transformer Substation | Inactive | Assessment | Hazard Undetermined |
| 151. | Maui | Paia | PA/SI | Paia Sugar Mill | Ongoing | Assessment | Hazard Undetermined |
| 152. | Maui | Pukalani | VRP | Maui Pineapple Co Ltd, Corn Mill Camp | Inactive | Assessment | Hazard Present |
| 153. | Maui | Puunene | State | Hawaiian Commercial & Sugar Company | Ongoing | Assessment | Hazard Undetermined |
| 154. | Maui | Puunene | State | Maui Wood Treating Co Ltd | Ongoing | Assessment | Hazard Undetermined |
| 155. | Maui | Puunene | State | Old Puunene Airport Soil Contamination | Ongoing | Assessment | Hazard Undetermined |
| 156. | Maui | Puunene | State | Puunene Sugar Mill | Ongoing | Assessment | Hazard Managed With Engineering Controls |
| 157. | Maui | Wailuku | State | MECO Transformer 7597 | Ongoing | Assessment | Hazard Undetermined |
| 158. | Maui | Wailuku | State | Valley Isle Motors LUST | Ongoing | Assessment | Hazard Undetermined |
| 159. | Maui | Wailuku | State | Waiale Ash Pile | Ongoing | Response | Hazard Present |
| 160. | Maui | Wailuku | State | Y Hata- Maui | Ongoing | Assessment | Hazard Undetermined |
| 161. | Molokai | Hoolehua | State | Grace Pacific Corporation Manawainui, Molokai Facility | Ongoing | Response | Hazard Present |
| 162. | Molokai | Kanunakakai | State | Kalamaula Landfill | Ongoing | Assessment | Hazard Managed With Engineering Controls |

Hawai'i State Response Program List of Priority Sites - FY 2008

| | <u>Island</u> | <u>Locality</u> | <u>Program Area</u> | <u>Facility/Site Name</u> | <u>Site Status</u> | <u>Program Action</u> | <u>Potential Hazard and Controls in Place</u> |
|------|----------------------|------------------------|----------------------------|--|---------------------------|------------------------------|--|
| 163. | Molokai | Kaunakakai | Brownfields | Molokai Community Service Center | Ongoing | Response | Hazard Present |
| 164. | Molokai | Kaunakakai | State | Hawaiian Eye Center | Ongoing | Assessment | Hazard Undetermined |
| 165. | Molokai | Kaunakakai | State | Island Petroleum, Inc (Kaunakakai Terminal) | Ongoing | Response | Hazard Undetermined |
| 166. | Molokai | Kaunakakai | State | Rawlins' Chevron Service | NFA | Response | No Hazard |
| 167. | Oahu | | State | Dillingham Military Reservation, Former Transformer Site | Ongoing | Assessment | Hazard Undetermined |
| 168. | Oahu | | State | Fort Barrette, Safety Hazard Removal | Ongoing | Assessment | Hazard Undetermined |
| 169. | Oahu | | State | Fort DeRussy, Former Leaking UST Site (Bldg 107 & 108) | Ongoing | Assessment | Hazard Undetermined |
| 170. | Oahu | | State | Kahuku Training Area, Former Transformer Site | Ongoing | Assessment | Hazard Undetermined |
| 171. | Oahu | Aiea | State | Aiea Stream | Ongoing | Assessment | Hazard Undetermined |
| 172. | Oahu | Aiea | State | Grace Pacific Corporation - Halawa Valley Street | Ongoing | Response | Hazard Present |
| 173. | Oahu | Aiea | State | Halawa Animal Quarantine Station | Ongoing | Assessment | Hazard Managed With Engineering Controls |
| 174. | Oahu | Aiea | State | Hawaii Baking Company | Ongoing | Assessment | Hazard Undetermined |
| 175. | Oahu | Aiea | State | HECO Transformer 52091 | Ongoing | Assessment | Hazard Undetermined |
| 176. | Oahu | Aiea | State | Sears Facility #1578 at Pearlridge Mall Elevator Jack | Ongoing | Assessment | Hazard Managed With Engineering Controls |
| 177. | Oahu | Aiea | State | Sears Facility #1578 at Pearlridge Mall Hydraulic Hoist | Ongoing | Response | Hazard Present |
| 178. | Oahu | Aiea | VRP | Aiea Sugar Mill Lots 6-14 | Ongoing | Response | Hazard Managed With Institutional Controls |

Hawai'i State Response Program List of Priority Sites - FY 2008

| | <u>Island</u> | <u>Locality</u> | <u>Program Area</u> | <u>Facility/Site Name</u> | <u>Site Status</u> | <u>Program Action</u> | <u>Potential Hazard and Controls in Place</u> |
|------|----------------------|------------------------|----------------------------|---|---------------------------|------------------------------|--|
| 179. | Oahu | Ewa | Brownfields | Ewa Mill Manager's Mansion and Three-House Camp | Ongoing | Assessment | Hazard Undetermined |
| 180. | Oahu | Ewa Beach | State | Ewa Sugar Mill/Oahu Sugar Co. - Coral Wastepit | Ongoing | Assessment | Hazard Undetermined |
| 181. | Oahu | Ewa Beach | State | Ewa Sugar Mill/Oahu Sugar Co. - Fumigant Storage Area | Ongoing | Assessment | Hazard Undetermined |
| 182. | Oahu | Ewa Beach | State | Ewa Sugar Mill/Oahu Sugar Co. - Pesticide Mixing/Loading Site | Ongoing | Response | Hazard Managed With Engineering Controls |
| 183. | Oahu | Ewa Beach | State | Leeward Auto Wreckers, Inc | Ongoing | Assessment | Hazard Undetermined |
| 184. | Oahu | Ewa Beach | State | Palailai Landfill | Ongoing | Response | Hazard Managed With Engineering Controls |
| 185. | Oahu | Haleiwa | State | Haleiwa Chevron (OK Chevron) | Inactive | Assessment | Hazard Undetermined |
| 186. | Oahu | Haleiwa | State | Haleiwa Chevron (OK Chevron) | Inactive | Assessment | Hazard Undetermined |
| 187. | Oahu | Haleiwa | State | Twin Bridge Road Drum Dumping-Haleiwa | Ongoing | Response | Hazard Undetermined |
| 188. | Oahu | Haleiwa | State | Waimea Valley Adventure Park | Ongoing | Assessment | Hazard Undetermined |
| 189. | Oahu | Honolulu | Brownfields | Cannon Club | Inactive | Assessment | Hazard Undetermined |
| 190. | Oahu | Honolulu | Brownfields | Kakaako Brownfield Project | Ongoing | Assessment | Hazard Undetermined |
| 191. | Oahu | Honolulu | Brownfields | Kakaako Brownfield Project - Unit 10 | Ongoing | Assessment | Hazard Managed With Engineering Controls |
| 192. | Oahu | Honolulu | Brownfields | Kakaako Brownfield Project - Unit 2 | Ongoing | Assessment | Hazard Managed With Engineering Controls |

Hawai'i State Response Program List of Priority Sites - FY 2008

| | <u>Island</u> | <u>Locality</u> | <u>Program Area</u> | <u>Facility/Site Name</u> | <u>Site Status</u> | <u>Program Action</u> | <u>Potential Hazard and Controls in Place</u> |
|------|----------------------|------------------------|----------------------------|-------------------------------------|---------------------------|------------------------------|--|
| 193. | Oahu | Honolulu | Brownfields | Kakaako Brownfield Project - Unit 4 | Ongoing | Assessment | Hazard Managed With Engineering Controls |
| 194. | Oahu | Honolulu | Brownfields | Kakaako Brownfield Project - Unit 5 | Ongoing | Assessment | Hazard Managed With Engineering Controls |
| 195. | Oahu | Honolulu | Brownfields | Kakaako Brownfield Project - Unit 6 | Ongoing | Response | Hazard Managed With Engineering Controls |
| 196. | Oahu | Honolulu | Brownfields | Kakaako Brownfield Project - Unit 9 | Ongoing | Assessment | Hazard Managed With Engineering Controls |
| 197. | Oahu | Honolulu | Brownfields | Kuhio Park Terrace Units D1 and D2 | Ongoing | Response | Hazard Undetermined |
| 198. | Oahu | Honolulu | Brownfields | Sand Island State Recreation Area | Ongoing | Assessment | Hazard Undetermined |
| 199. | Oahu | Honolulu | State | 158 Sand Island Access Rd | Ongoing | Response | Hazard Undetermined |
| 200. | Oahu | Honolulu | State | 180 Sand Island Access Rd | Ongoing | Response | Hazard Undetermined |
| 201. | Oahu | Honolulu | State | 2135 Auiki St | Ongoing | Response | Hazard Undetermined |
| 202. | Oahu | Honolulu | State | 2147 Aoao Street | Ongoing | Assessment | Hazard Undetermined |
| 203. | Oahu | Honolulu | State | 218 Mohonua Place | Ongoing | Response | Hazard Undetermined |
| 204. | Oahu | Honolulu | State | 2250 Pahounui Drive | Ongoing | Response | Hazard Undetermined |
| 205. | Oahu | Honolulu | State | 2326 Kalihi Street UST | Ongoing | Assessment | Hazard Managed With Engineering Controls |
| 206. | Oahu | Honolulu | State | 373 North Nimitz Highway | Ongoing | Response | Hazard Present |

Hawai'i State Response Program List of Priority Sites - FY 2008

| | <u>Island</u> | <u>Locality</u> | <u>Program Area</u> | <u>Facility/Site Name</u> | <u>Site Status</u> | <u>Program Action</u> | <u>Potential Hazard and Controls in Place</u> |
|------|----------------------|------------------------|----------------------------|---|---------------------------|------------------------------|--|
| 207. | Oahu | Honolulu | State | 420-470 North Nimitz Highway | Ongoing | Response | Hazard Managed With Engineering Controls |
| 208. | Oahu | Honolulu | State | 580 North Nimitz Highway | Inactive | Response | Hazard Managed With Engineering Controls |
| 209. | Oahu | Honolulu | State | 595 Ala Moana Black Oil Pipeline | Ongoing | Assessment | Hazard Undetermined |
| 210. | Oahu | Honolulu | State | 861-869 North Nimitz Highway | Ongoing | Assessment | Hazard Managed With Engineering Controls |
| 211. | Oahu | Honolulu | State | ABC Disposal Company | NFA | Assessment | No Hazard |
| 212. | Oahu | Honolulu | State | Aircraft Service International Group - Sand Island (ASIG) | Ongoing | Response | Hazard Undetermined |
| 213. | Oahu | Honolulu | State | Airport Group International | Ongoing | Assessment | Hazard Undetermined |
| 214. | Oahu | Honolulu | State | Airport Service International Group-Airport | Ongoing | Assessment | Hazard Undetermined |
| 215. | Oahu | Honolulu | State | Ala Moana #2 WWPS | Ongoing | Assessment | Hazard Managed With Institutional Controls |
| 216. | Oahu | Honolulu | State | Ala Wai Cove Condominium Apartments | Ongoing | Assessment | Hazard Undetermined |
| 217. | Oahu | Honolulu | State | Alii #3282 | Ongoing | Response | Hazard Present |
| 218. | Oahu | Honolulu | State | Allstate Industrial & Marine Cleaning, Inc. | Ongoing | Response | Hazard Present |
| 219. | Oahu | Honolulu | State | Aloha 7-Eleven City Square | Ongoing | Assessment | Hazard Undetermined |
| 220. | Oahu | Honolulu | State | Aloha Petroleum Terminal | Ongoing | Response | Hazard Present |

Hawai'i State Response Program List of Priority Sites - FY 2008

| | <u>Island</u> | <u>Locality</u> | <u>Program Area</u> | <u>Facility/Site Name</u> | <u>Site Status</u> | <u>Program Action</u> | <u>Potential Hazard and Controls in Place</u> |
|------|----------------------|------------------------|----------------------------|--|---------------------------|------------------------------|--|
| 221. | Oahu | Honolulu | State | Alsco (American Linen) Tank | Inactive | Response | Hazard Managed With Institutional Controls |
| 222. | Oahu | Honolulu | State | Ama Neighborhood | Ongoing | Assessment | Hazard Undetermined |
| 223. | Oahu | Honolulu | State | ARCO AM/PM #82102 (Texaco 61-100-0043) | Ongoing | Response | Hazard Undetermined |
| 224. | Oahu | Honolulu | State | ARCO AM/PM #82111 (Texaco 61-100-0045) | Ongoing | Assessment | Hazard Undetermined |
| 225. | Oahu | Honolulu | State | BHP Gasco Benzene Site | Ongoing | Response | Hazard Present |
| 226. | Oahu | Honolulu | State | BMW of Honolulu | Ongoing | Assessment | Hazard Managed With Engineering Controls |
| 227. | Oahu | Honolulu | State | BTU Storage Tanks Pier 19 | Ongoing | Response | Hazard Present |
| 228. | Oahu | Honolulu | State | Chevron Honolulu Terminal Marine | Ongoing | Response | Hazard Present |
| 229. | Oahu | Honolulu | State | Chevron Honolulu Transportation Terminal | Ongoing | Response | Hazard Managed With Engineering Controls |
| 230. | Oahu | Honolulu | State | Chevron Kapalama Northeast Parcel | Ongoing | Response | Hazard Present |
| 231. | Oahu | Honolulu | State | Chevron Kapalama Northwest Parcel | Ongoing | Response | Hazard Present |
| 232. | Oahu | Honolulu | State | Chevron Kapalama Southwest Parcel | Ongoing | Assessment | Hazard Managed With Institutional Controls |
| 233. | Oahu | Honolulu | State | Chevron Kapalama Terminal | Ongoing | Response | Hazard Present |
| 234. | Oahu | Honolulu | State | Chevron Pier 35 Pipeline Release | Ongoing | Response | Hazard Managed With Engineering Controls |

Hawai'i State Response Program List of Priority Sites - FY 2008

| | <u>Island</u> | <u>Locality</u> | <u>Program Area</u> | <u>Facility/Site Name</u> | <u>Site Status</u> | <u>Program Action</u> | <u>Potential Hazard and Controls in Place</u> |
|------|----------------------|------------------------|----------------------------|---|---------------------------|------------------------------|--|
| 235. | Oahu | Honolulu | State | Chuei Shokoh, Inc. | Ongoing | Assessment | Hazard Managed With Institutional Controls |
| 236. | Oahu | Honolulu | State | Citizens Energy Services Pier 38 | Ongoing | Response | Hazard Managed With Engineering Controls |
| 237. | Oahu | Honolulu | State | City Mill Company, Ltd. | NFA | Response | Hazard Managed With Institutional Controls |
| 238. | Oahu | Honolulu | State | Cooke Street Lead Contamination | Ongoing | Assessment | Hazard Managed With Engineering Controls |
| 239. | Oahu | Honolulu | State | Cutter Dodge Dillingham | Inactive | Response | Hazard Present |
| 240. | Oahu | Honolulu | State | DLNR Buried Drum Site | Ongoing | Assessment | Hazard Managed With Institutional Controls |
| 241. | Oahu | Honolulu | State | Dole Iwilei | Ongoing | Assessment | Hazard Undetermined |
| 242. | Oahu | Honolulu | State | Domestic Commercial Fishing Village | Ongoing | Response | Hazard Managed With Engineering Controls |
| 243. | Oahu | Honolulu | State | Durant Properties | Ongoing | Assessment | Hazard Undetermined |
| 244. | Oahu | Honolulu | State | Equilon Enterprises LLC Honolulu Terminal | Ongoing | Response | Hazard Present |
| 245. | Oahu | Honolulu | State | Factory Street Lead | Ongoing | Assessment | Hazard Managed With Engineering Controls |
| 246. | Oahu | Honolulu | State | Farrington High School | Ongoing | Assessment | Hazard Undetermined |

Hawai'i State Response Program List of Priority Sites - FY 2008

| | <u>Island</u> | <u>Locality</u> | <u>Program Area</u> | <u>Facility/Site Name</u> | <u>Site Status</u> | <u>Program Action</u> | <u>Potential Hazard and Controls in Place</u> |
|------|----------------------|------------------------|----------------------------|---|---------------------------|------------------------------|--|
| 247. | Oahu | Honolulu | State | Former Kalakaua Transmission Inc | Ongoing | Assessment | Hazard Managed With Engineering Controls |
| 248. | Oahu | Honolulu | State | Fort Ruger Former Firing Ranges | NFA | Response | Hazard Managed With Institutional Controls |
| 249. | Oahu | Honolulu | State | Grace Otsuka Apartment Complex | NFA | Response | Hazard Managed With Engineering Controls |
| 250. | Oahu | Honolulu | State | GTE Base Yard Sump | Inactive | Assessment | Hazard Undetermined |
| 251. | Oahu | Honolulu | State | GTE Hawaiian Tel - Contaminated Soil | NFA | Response | Hazard Managed With Engineering Controls |
| 252. | Oahu | Honolulu | State | GTE-Hawaiian Tel Employees Federal Credit Union (HTEFCU) | Ongoing | Assessment | Hazard Managed With Engineering Controls |
| 253. | Oahu | Honolulu | State | Hagadone Printing Company Sand Island | Ongoing | Assessment | Hazard Managed With Institutional Controls |
| 254. | Oahu | Honolulu | State | Hakuyosha Hawaii, Inc | Ongoing | Response | Hazard Managed With Engineering Controls |
| 255. | Oahu | Honolulu | State | Hale Pua Nui UST Removal | Ongoing | Assessment | Hazard Undetermined |
| 256. | Oahu | Honolulu | State | Hall Mark Dry Cleaners | Ongoing | Assessment | Hazard Undetermined |
| 257. | Oahu | Honolulu | State | Hart Street WWPS | Ongoing | Response | Hazard Present |
| 258. | Oahu | Honolulu | State | Hawaii Fueling Facilities Corporation-Sand Island Access Road | Ongoing | Assessment | Hazard Undetermined |

Hawai'i State Response Program List of Priority Sites - FY 2008

| | <u>Island</u> | <u>Locality</u> | <u>Program Area</u> | <u>Facility/Site Name</u> | <u>Site Status</u> | <u>Program Action</u> | <u>Potential Hazard and Controls in Place</u> |
|------|----------------------|------------------------|----------------------------|---|---------------------------|------------------------------|--|
| 259. | Oahu | Honolulu | State | Hawaii Grain Corporation | Ongoing | Assessment | Hazard Undetermined |
| 260. | Oahu | Honolulu | State | Hawaii Hall | Ongoing | Assessment | Hazard Undetermined |
| 261. | Oahu | Honolulu | State | Hawaii Instrumentation & Controls, Inc | Ongoing | Assessment | Hazard Undetermined |
| 262. | Oahu | Honolulu | State | Hawaii Job Corps Center | Ongoing | Assessment | Hazard Undetermined |
| 263. | Oahu | Honolulu | State | Hawaii Mercury | Ongoing | Response | Hazard Present |
| 264. | Oahu | Honolulu | State | Hawaii Metal Recycling Company Pier 35 | Ongoing | Response | Hazard Managed With Institutional Controls |
| 265. | Oahu | Honolulu | State | Hawaii Staging and Lighting | Ongoing | Assessment | Hazard Undetermined |
| 266. | Oahu | Honolulu | State | Hawaii Stevedores | Ongoing | Response | Hazard Present |
| 267. | Oahu | Honolulu | State | Hawaii Transfer Company, Ltd Pier 36 | Ongoing | Response | Hazard Present |
| 268. | Oahu | Honolulu | State | Hawaiian Bitumuls Paving & Precast Company, Sand Island Access Road | Ongoing | Assessment | Hazard Managed With Institutional Controls |
| 269. | Oahu | Honolulu | State | Hawaiian Electric Company (HECO) - Iwilei Tank Yard | Ongoing | Response | Hazard Managed With Engineering Controls |
| 270. | Oahu | Honolulu | State | Hawaiian Electric Company (HECO)- Honolulu Generating Station | Ongoing | Assessment | Hazard Undetermined |
| 271. | Oahu | Honolulu | State | Hawaiian Flour Mill | Ongoing | Response | Hazard Present |
| 272. | Oahu | Honolulu | State | Hawaiian Fluid Power Company | Ongoing | Response | Hazard Managed With Institutional Controls |
| 273. | Oahu | Honolulu | State | Hawaiian Tug & Barge Corporation | Inactive | Assessment | Hazard Undetermined |

Hawai'i State Response Program List of Priority Sites - FY 2008

| | <u>Island</u> | <u>Locality</u> | <u>Program Area</u> | <u>Facility/Site Name</u> | <u>Site Status</u> | <u>Program Action</u> | <u>Potential Hazard and Controls in Place</u> |
|------|----------------------|------------------------|----------------------------|---|---------------------------|------------------------------|--|
| 274. | Oahu | Honolulu | State | HCDA/UH Health and Wellness Center | Ongoing | Assessment | Hazard Managed With Institutional Controls |
| 275. | Oahu | Honolulu | State | HECO Fuel Oil Pipeline Route State Energy Corridor | Ongoing | Assessment | Hazard Undetermined |
| 276. | Oahu | Honolulu | State | HECO Soil Contamination Chapin Lane and Kapiolani Boulevard | Inactive | Assessment | Hazard Managed With Engineering Controls |
| 277. | Oahu | Honolulu | State | HECO Substation: Pukele Substation | Ongoing | Assessment | Hazard Undetermined |
| 278. | Oahu | Honolulu | State | HECO Transformer 26127 | Ongoing | Assessment | Hazard Undetermined |
| 279. | Oahu | Honolulu | State | Hertz Rent A Car, Vehicle Maintenance Facility | Ongoing | Assessment | Hazard Managed With Engineering Controls |
| 280. | Oahu | Honolulu | State | Honolulu International Airport (HIA) | Ongoing | Assessment | Hazard Undetermined |
| 281. | Oahu | Honolulu | State | Honolulu Shipyard, Inc | Inactive | Response | Hazard Undetermined |
| 282. | Oahu | Honolulu | State | Iolani School Petroleum odor | Ongoing | Assessment | Hazard Undetermined |
| 283. | Oahu | Honolulu | State | Island Movers, Inc | Ongoing | Assessment | Hazard Undetermined |
| 284. | Oahu | Honolulu | State | Iwilei Business Center | Inactive | Response | Hazard Managed With Institutional Controls |
| 285. | Oahu | Honolulu | State | Iwilei Project Site (Iwilei Brownfields) | Inactive | Response | Hazard Present |
| 286. | Oahu | Honolulu | State | Iwilei Texaco | Inactive | Response | Hazard Present |
| 287. | Oahu | Honolulu | State | Kakaako Brownfield Project - Unit 7 | Ongoing | Response | Hazard Managed With Engineering Controls |

Hawai'i State Response Program List of Priority Sites - FY 2008

| | <u>Island</u> | <u>Locality</u> | <u>Program Area</u> | <u>Facility/Site Name</u> | <u>Site Status</u> | <u>Program Action</u> | <u>Potential Hazard and Controls in Place</u> |
|------|----------------------|------------------------|----------------------------|---|---------------------------|------------------------------|--|
| 288. | Oahu | Honolulu | State | Kakaako Brownfield Project - Unit 8 | Ongoing | Response | Hazard Managed With Engineering Controls |
| 289. | Oahu | Honolulu | State | Kakaako Makai District Parking Garage-Unit 1 and 3 | Ongoing | Response | Hazard Managed With Engineering Controls |
| 290. | Oahu | Honolulu | State | Kakaako Pump Station | Ongoing | Response | Hazard Present |
| 291. | Oahu | Honolulu | State | Kalani, Hart, Mokuaea Street, Honolulu, Hawaii | Ongoing | Response | Hazard Present |
| 292. | Oahu | Honolulu | State | Kalihi Texaco | Ongoing | Assessment | Hazard Undetermined |
| 293. | Oahu | Honolulu | State | Kamehameha Schools | Ongoing | Assessment | Hazard Managed With Engineering Controls |
| 294. | Oahu | Honolulu | State | Kapalama Incinerator Off-Site Contamination | Ongoing | Assessment | Hazard Undetermined |
| 295. | Oahu | Honolulu | State | Keehi Lagoon Canoe Facility, Increment II | Ongoing | Assessment | Hazard Managed With Engineering Controls |
| 296. | Oahu | Honolulu | State | Kewalo Incinerator Ash Dump | Ongoing | Assessment | Hazard Present |
| 297. | Oahu | Honolulu | State | Kewalo Incinerator Landfill | Ongoing | Assessment | Hazard Present |
| 298. | Oahu | Honolulu | State | Koolani Tower Project | Ongoing | Assessment | Hazard Managed With Engineering Controls |
| 299. | Oahu | Honolulu | State | Lance Goya's Chevron Service (Tom Tomita's Chevron) | Ongoing | Response | Hazard Present |
| 300. | Oahu | Honolulu | State | Lockheed Air Terminal, Inc | Ongoing | Assessment | Hazard Undetermined |

Hawai'i State Response Program List of Priority Sites - FY 2008

| | <u>Island</u> | <u>Locality</u> | <u>Program Area</u> | <u>Facility/Site Name</u> | <u>Site Status</u> | <u>Program Action</u> | <u>Potential Hazard and Controls in Place</u> |
|------|----------------------|------------------------|----------------------------|---|---------------------------|------------------------------|--|
| 301. | Oahu | Honolulu | State | Longs Drugs Stores Warehouse | Ongoing | Assessment | Hazard Managed With Institutional Controls |
| 302. | Oahu | Honolulu | State | Lyon Arboretum Cottages A and G | Ongoing | Assessment | Hazard Undetermined |
| 303. | Oahu | Honolulu | State | Matson Navigation Terminal | Ongoing | Assessment | Hazard Undetermined |
| 304. | Oahu | Honolulu | State | McCabe, Hamilton, & Renny Company, Ltd | Inactive | Response | Hazard Undetermined |
| 305. | Oahu | Honolulu | State | Meadow Gold Dairies (Ice Cream Plant) | NFA | Assessment | No Hazard |
| 306. | Oahu | Honolulu | State | Middle Street Intermodal Center | Ongoing | Response | Hazard Undetermined |
| 307. | Oahu | Honolulu | State | Mid-Pacific Institute | Ongoing | Assessment | Hazard Undetermined |
| 308. | Oahu | Honolulu | State | Miyazaki Honolulu Airport Service Station (Airways Service Station Inc) | Ongoing | Assessment | Hazard Undetermined |
| 309. | Oahu | Honolulu | State | Moanalua Medical Center and Clinic | Ongoing | Response | Hazard Present |
| 310. | Oahu | Honolulu | State | Moanalua Valley Parcel | Ongoing | Assessment | Hazard Managed With Institutional Controls |
| 311. | Oahu | Honolulu | State | Motor Imports | Ongoing | Assessment | Hazard Managed With Institutional Controls |
| 312. | Oahu | Honolulu | State | Motor Supply | Ongoing | Assessment | Hazard Managed With Engineering Controls |
| 313. | Oahu | Honolulu | State | National Car Rental System, Inc. North Nimitz Highway | NFA | Assessment | No Hazard |
| 314. | Oahu | Honolulu | State | Nestle USA | Ongoing | Response | Hazard Present |
| 315. | Oahu | Honolulu | State | Nimitz Highway Water Improvement Project Sumner to Queen | Ongoing | Response | Hazard Present |

Hawai'i State Response Program List of Priority Sites - FY 2008

| | <u>Island</u> | <u>Locality</u> | <u>Program Area</u> | <u>Facility/Site Name</u> | <u>Site Status</u> | <u>Program Action</u> | <u>Potential Hazard and Controls in Place</u> |
|------|----------------------|------------------------|----------------------------|--|---------------------------|------------------------------|--|
| 316. | Oahu | Honolulu | State | Pauley Petroleum | Ongoing | Assessment | Hazard Managed With Engineering Controls |
| 317. | Oahu | Honolulu | State | PHT, Inc. dba Polynesian Hospitality | Inactive | Response | Hazard Undetermined |
| 318. | Oahu | Honolulu | State | Pukoloa Wood Treating Site | Ongoing | Assessment | Hazard Undetermined |
| 319. | Oahu | Honolulu | State | Punahou School Firing Range | Ongoing | Response | Hazard Present |
| 320. | Oahu | Honolulu | State | Queen Emmalani Tower | Ongoing | Assessment | Hazard Managed With Engineering Controls |
| 321. | Oahu | Honolulu | State | Resource Recovery, Ltd. | Ongoing | Assessment | Hazard Managed With Institutional Controls |
| 322. | Oahu | Honolulu | State | Richard's Chevron | Ongoing | Response | Hazard Undetermined |
| 323. | Oahu | Honolulu | State | Roberts Hawaii | Ongoing | Assessment | Hazard Managed With Engineering Controls |
| 324. | Oahu | Honolulu | State | Roger's Chevron | NFA | Assessment | No Hazard |
| 325. | Oahu | Honolulu | State | Royal Gardens Hotel Diesel | NFA | Assessment | No Hazard |
| 326. | Oahu | Honolulu | State | Sand Island Industrial Park | Ongoing | Assessment | Hazard Managed With Institutional Controls |
| 327. | Oahu | Honolulu | State | Sand Island WWTP | Inactive | Response | Hazard Present |
| 328. | Oahu | Honolulu | State | Sand Island WWTP Mokuone Electrical Substation | Ongoing | Assessment | Hazard Managed With Engineering Controls |
| 329. | Oahu | Honolulu | State | Sause Brothers | Ongoing | Response | Hazard Present |

Hawai'i State Response Program List of Priority Sites - FY 2008

| | <u>Island</u> | <u>Locality</u> | <u>Program Area</u> | <u>Facility/Site Name</u> | <u>Site Status</u> | <u>Program Action</u> | <u>Potential Hazard and Controls in Place</u> |
|------|----------------------|------------------------|----------------------------|--|---------------------------|------------------------------|--|
| 330. | Oahu | Honolulu | State | Sea-Land Service | Ongoing | Assessment | Hazard Undetermined |
| 331. | Oahu | Honolulu | State | Servco Pacific, Inc-Kalihi | Ongoing | Assessment | Hazard Undetermined |
| 332. | Oahu | Honolulu | State | Shell Service Station (Sierra Shell Service) | Ongoing | Assessment | Hazard Undetermined |
| 333. | Oahu | Honolulu | State | Shidler College of Business Site Improvements | Ongoing | Assessment | Hazard Undetermined |
| 334. | Oahu | Honolulu | State | Shizuko & Masuo Hamaoka Trusts | Ongoing | Assessment | Hazard Managed With Institutional Controls |
| 335. | Oahu | Honolulu | State | Tesoro Hawaii Corporation, Terminal Department-Honolulu Harbor Pier 34 | Ongoing | Response | Hazard Managed With Engineering Controls |
| 336. | Oahu | Honolulu | State | Tesoro Hawaii Corporation, Terminal Department-Sand Island | Ongoing | Response | Hazard Present |
| 337. | Oahu | Honolulu | State | Theo Davies Caterpillar Repair Site | Inactive | Response | Hazard Managed With Engineering Controls |
| 338. | Oahu | Honolulu | State | Thoht Property | Ongoing | Assessment | Hazard Undetermined |
| 339. | Oahu | Honolulu | State | Towco - Sand Island | Ongoing | Assessment | Hazard Undetermined |
| 340. | Oahu | Honolulu | State | Travel Plaza Transportation, LLC | Ongoing | Assessment | Hazard Undetermined |
| 341. | Oahu | Honolulu | State | Uaukewai Diving Salvage & Fishing, Inc | Inactive | Response | Hazard Present |
| 342. | Oahu | Honolulu | State | Underground Hoists | Ongoing | Assessment | Hazard Managed With Institutional Controls |
| 343. | Oahu | Honolulu | State | University of Hawaii at Manoa | Ongoing | Assessment | Hazard Undetermined |
| 344. | Oahu | Honolulu | State | USPS Vehicle Maintenance Facility | Ongoing | Response | Hazard Present |

Hawai'i State Response Program List of Priority Sites - FY 2008

| | <u>Island</u> | <u>Locality</u> | <u>Program Area</u> | <u>Facility/Site Name</u> | <u>Site Status</u> | <u>Program Action</u> | <u>Potential Hazard and Controls in Place</u> |
|------|----------------------|------------------------|----------------------------|--|---------------------------|------------------------------|--|
| 345. | Oahu | Honolulu | State | Von Hamm Textiles | Ongoing | Assessment | Hazard Managed With Institutional Controls |
| 346. | Oahu | Honolulu | State | Waikiki Gateway Park | Ongoing | Assessment | Hazard Undetermined |
| 347. | Oahu | Honolulu | State | Waikiki Sand Villa II | Ongoing | Assessment | Hazard Undetermined |
| 348. | Oahu | Honolulu | State | Waipahu Auto Company | Ongoing | Assessment | Hazard Managed With Institutional Controls |
| 349. | Oahu | Honolulu | State | Weyerhaeuser | Ongoing | Response | Hazard Present |
| 350. | Oahu | Honolulu | State | Wiliwili and King Streets Excavation | Ongoing | Assessment | Hazard Undetermined |
| 351. | Oahu | Honolulu | State | Yacht Harbor Towers | Ongoing | Assessment | Hazard Undetermined |
| 352. | Oahu | Honolulu | State | Yee Hop Building Maunakea Street | Ongoing | Response | Hazard Undetermined |
| 353. | Oahu | Honolulu | State | Yee Hop Property | Ongoing | Assessment | Hazard Undetermined |
| 354. | Oahu | Honolulu | State | Young Brothers, Ltd Piers 24-28 | Ongoing | Response | Hazard Present |
| 355. | Oahu | Honolulu | State | Young Brothers, Ltd. Piers 39, 40 | Ongoing | Assessment | Hazard Undetermined |
| 356. | Oahu | Honolulu | State | Yue-Fung Kwan Construction Site | NFA | Assessment | Hazard Managed With Institutional Controls |
| 357. | Oahu | Honolulu | State | Zippy's 666 N Nimitz Highway | Ongoing | Response | Hazard Present |
| 358. | Oahu | Honolulu | VRP | Aloha/King Self Storage | Ongoing | Response | Hazard Managed With Engineering Controls |
| 359. | Oahu | Honolulu | VRP | Brewer Environmental Industries-Pacific Street | Ongoing | Assessment | Hazard Undetermined |

Hawai'i State Response Program List of Priority Sites - FY 2008

| | <u>Island</u> | <u>Locality</u> | <u>Program Area</u> | <u>Facility/Site Name</u> | <u>Site Status</u> | <u>Program Action</u> | <u>Potential Hazard and Controls in Place</u> |
|------|----------------------|------------------------|----------------------------|--|---------------------------|------------------------------|--|
| 360. | Oahu | Honolulu | VRP | Costco Warehouse | NFA | Response | Hazard Managed With Engineering Controls |
| 361. | Oahu | Honolulu | VRP | Sprint PCS Call Center | NFA | Response | Hazard Managed With Engineering Controls |
| 362. | Oahu | Honolulu | VRP | Tosco Honolulu Bulk Distribution Terminal | Ongoing | Response | Hazard Managed With Engineering Controls |
| 363. | Oahu | Kahuku | VRP | Kahuku Sugar Mill | Ongoing | Response | Hazard Managed With Institutional Controls |
| 364. | Oahu | Kailua | PA/SI | Honolulu Skeet Club | Ongoing | Response | Hazard Managed With Institutional Controls |
| 365. | Oahu | Kailua | State | C&C Facility Maintenance Kapaa Quarry Rd. Baseyard | Ongoing | Response | Hazard Present |
| 366. | Oahu | Kailua | State | Grace Pacific Corporation - Upper Kapaa Facility | NFA | Response | No Hazard |
| 367. | Oahu | Kailua | State | GTE Kailua Baseyard | NFA | Assessment | Hazard Managed With Engineering Controls |
| 368. | Oahu | Kailua | State | Hawaii Youth Correctional Facility | Ongoing | Assessment | Hazard Undetermined |
| 369. | Oahu | Kailua | State | Kailua 76 #4342 (Unocal) | NFA | Assessment | No Hazard |
| 370. | Oahu | Kailua | State | Kailua Corporation Yard | Ongoing | Assessment | Hazard Undetermined |
| 371. | Oahu | Kailua | State | Kapaa Landfill - Kapaa Quarry Road | Ongoing | Assessment | Hazard Undetermined |
| 372. | Oahu | Kailua | State | Malunui Avenue Oil Contamination | Ongoing | Assessment | Hazard Undetermined |

Hawai'i State Response Program List of Priority Sites - FY 2008

| | <u>Island</u> | <u>Locality</u> | <u>Program Area</u> | <u>Facility/Site Name</u> | <u>Site Status</u> | <u>Program Action</u> | <u>Potential Hazard and Controls in Place</u> |
|------|----------------------|------------------------|----------------------------|--|---------------------------|------------------------------|--|
| 373. | Oahu | Kailua | State | Windward Volkswagon | Ongoing | Assessment | Hazard Managed With Engineering Controls |
| 374. | Oahu | Kaneohe | Brownfields | Haiku Valley Rehabilitation Site | Ongoing | Assessment | Hazard Undetermined |
| 375. | Oahu | Kaneohe | State | Caesar's Cleaners | Ongoing | Response | Hazard Present |
| 376. | Oahu | Kaneohe | State | Scott's Plating | NFA | Assessment | No Hazard |
| 377. | Oahu | Kaneohe | State | USCG Omega Station | Ongoing | Assessment | Hazard Undetermined |
| 378. | Oahu | Kapaa | State | Kapaa Corporation Yard | Ongoing | Response | Hazard Present |
| 379. | Oahu | Kapolei | Brownfields | DHHL East Kapolei Affordable Housing Project | NFA | Assessment | No Hazard |
| 380. | Oahu | Kapolei | Brownfields | Ewa Feedlot Property | Ongoing | Response | Hazard Undetermined |
| 381. | Oahu | Kapolei | State | AES Hawaii Inc | Ongoing | Assessment | Hazard Present |
| 382. | Oahu | Kapolei | State | Aloha Petroleum, Barbers Pt Sales Terminal (Formerly Texaco/Equilon) | Ongoing | Response | Hazard Present |
| 383. | Oahu | Kapolei | State | Ameron Hawaii Industrial Precast Products (fka Pipe Plant) | Ongoing | Assessment | Hazard Undetermined |
| 384. | Oahu | Kapolei | State | Barbers Point Harbor Expansion | Ongoing | Assessment | Hazard Undetermined |
| 385. | Oahu | Kapolei | State | Barbers Point Harbor Pier 5 | Ongoing | Assessment | Hazard Undetermined |
| 386. | Oahu | Kapolei | State | Barbers Point Harbor Pier 7 and Storage Yard S-6 | Ongoing | Assessment | Hazard Undetermined |
| 387. | Oahu | Kapolei | State | Chemwood Treatment Co, Inc. | Ongoing | Assessment | Hazard Managed With Engineering Controls |
| 388. | Oahu | Kapolei | State | Chevron USA Products Co., Hawaii Refinery Tank Sludge | Ongoing | Assessment | Hazard Undetermined |

Hawai'i State Response Program List of Priority Sites - FY 2008

| | <u>Island</u> | <u>Locality</u> | <u>Program Area</u> | <u>Facility/Site Name</u> | <u>Site Status</u> | <u>Program Action</u> | <u>Potential Hazard and Controls in Place</u> |
|------|----------------------|------------------------|----------------------------|--|---------------------------|------------------------------|--|
| 389. | Oahu | Kapolei | State | Chevron USA Products Co., Hawaii Refinery, Marine Line Release | Inactive | Response | Hazard Present |
| 390. | Oahu | Kapolei | State | Con-Fab Hawaii Corporation | Ongoing | Assessment | Hazard Undetermined |
| 391. | Oahu | Kapolei | State | Costco Kapolei | Ongoing | Assessment | Hazard Undetermined |
| 392. | Oahu | Kapolei | State | CoVan Warehouse | Ongoing | Assessment | Hazard Undetermined |
| 393. | Oahu | Kapolei | State | East Kapolei Hoopili | Ongoing | Assessment | Hazard Undetermined |
| 394. | Oahu | Kapolei | State | Hanua Street Fugitive Oil | Ongoing | Assessment | Hazard Undetermined |
| 395. | Oahu | Kapolei | State | Hanua Street, Southern Terminus | Ongoing | Assessment | Hazard Managed With Engineering Controls |
| 396. | Oahu | Kapolei | State | Hawaii Metal Recycling Company | Ongoing | Assessment | Hazard Undetermined |
| 397. | Oahu | Kapolei | State | Hawaii Project Management (HPM) / Hawaiian Western Steel, Inc Beach Dump | Ongoing | Assessment | Hazard Managed With Institutional Controls |
| 398. | Oahu | Kapolei | State | Hawaiian Dredging Construction Company, Incorporated | Inactive | Assessment | Hazard Undetermined |
| 399. | Oahu | Kapolei | State | Hawaiian Refractories (Hawaiian Meat Packers) | Ongoing | Assessment | Hazard Undetermined |
| 400. | Oahu | Kapolei | State | Hawaiian Western Steel Dump | Ongoing | Assessment | Hazard Present |
| 401. | Oahu | Kapolei | State | Hawaiian Western Steel, Ltd | Ongoing | Assessment | Hazard Present |
| 402. | Oahu | Kapolei | State | HECO Pad-mount Transformer 45530 | Ongoing | Assessment | Hazard Undetermined |
| 403. | Oahu | Kapolei | State | Honolulu Resource Recovery Venture - H Power | Ongoing | Assessment | Hazard Managed With Engineering Controls |
| 404. | Oahu | Kapolei | State | Industrial Technology Kauhi Street | Ongoing | Assessment | Hazard Undetermined |
| 405. | Oahu | Kapolei | State | Kalaeloa Cogeneration Plant | Ongoing | Assessment | Hazard Undetermined |

Hawai'i State Response Program List of Priority Sites - FY 2008

| | <u>Island</u> | <u>Locality</u> | <u>Program Area</u> | <u>Facility/Site Name</u> | <u>Site Status</u> | <u>Program Action</u> | <u>Potential Hazard and Controls in Place</u> |
|------|----------------------|------------------------|----------------------------|--|---------------------------|------------------------------|--|
| 406. | Oahu | Kapolei | State | Kapolei Commons | NFA | Response | Hazard Managed With Institutional Controls |
| 407. | Oahu | Kapolei | State | Kenai Industrial Park | Ongoing | Assessment | Hazard Present |
| 408. | Oahu | Kapolei | State | Ko Olina Resort Omega Project | Ongoing | Assessment | Hazard Undetermined |
| 409. | Oahu | Kapolei | State | Leihano Proposed Kapolei Senior Village | NFA | Assessment | No Hazard |
| 410. | Oahu | Kapolei | State | Marisco, Ltd | Ongoing | Assessment | Hazard Undetermined |
| 411. | Oahu | Kapolei | State | Precision Wood of Hawaii Inc | Ongoing | Assessment | Hazard Undetermined |
| 412. | Oahu | Kapolei | State | Tesoro Hawaii Corporation Kapolei Refinery | Ongoing | Assessment | Hazard Undetermined |
| 413. | Oahu | Kapolei | State | Tileco, Inc | Ongoing | Assessment | Hazard Undetermined |
| 414. | Oahu | Kapolei | State | UH West Oahu Campus | Ongoing | Assessment | Hazard Undetermined |
| 415. | Oahu | Kapolei | State | Waimanalo Gulch Sanitary Landfill | Ongoing | Assessment | Hazard Undetermined |
| 416. | Oahu | Kapolei | VRP | Honolulu Wood Treating Company, Ltd | Ongoing | Response | Hazard Undetermined |
| 417. | Oahu | Kapolei | VRP | Honsador Lumber Corp | Ongoing | Response | Hazard Undetermined |
| 418. | Oahu | Kapolei | VRP | Komohana Park | NFA | Response | Hazard Managed With Institutional Controls |
| 419. | Oahu | Kapolei | VRP | Sun Home Metals | Ongoing | Response | Hazard Undetermined |
| 420. | Oahu | Kualoa | State | Kualoa Regional Park | NFA | Assessment | No Hazard |
| 421. | Oahu | Kunia | PA/SI | Del Monte Oahu Plantation Poamoho Tract | NFA | Assessment | No Hazard |
| 422. | Oahu | Kunia | State | Del Monte Corp (Oahu Plantation) | Ongoing | Assessment | Hazard Managed With Engineering Controls |

Hawai'i State Response Program List of Priority Sites - FY 2008

| | <u>Island</u> | <u>Locality</u> | <u>Program Area</u> | <u>Facility/Site Name</u> | <u>Site Status</u> | <u>Program Action</u> | <u>Potential Hazard and Controls in Place</u> |
|------|----------------------|------------------------|----------------------------|---|---------------------------|------------------------------|--|
| 423. | Oahu | Kunia | State | Del Monte Fresh Fruit Packing Facility | Ongoing | Assessment | Hazard Undetermined |
| 424. | Oahu | Kunia | State | Del Monte Kunia Fresh Fruit Packing Facility | Ongoing | Assessment | Hazard Undetermined |
| 425. | Oahu | Kunia | State | Ewa Sugar Mill/Oahu Sugar Co. - Kunia Staging Area | Ongoing | Assessment | Hazard Undetermined |
| 426. | Oahu | Kunia | State | Hawaii Agriculture Research Center-Kunia Substation | Ongoing | Assessment | Hazard Undetermined |
| 427. | Oahu | Kunia | State | Kunia Wells I | Ongoing | Assessment | Hazard Undetermined |
| 428. | Oahu | Kunia | State | Kunia Wells II | Ongoing | Assessment | Hazard Undetermined |
| 429. | Oahu | Kunia | State | Royal Kunia Phase II | Ongoing | Response | Hazard Present |
| 430. | Oahu | Mililani | State | Mililani Wells I | Ongoing | Assessment | Hazard Undetermined |
| 431. | Oahu | Mililani | State | Mililani Wells II | Ongoing | Assessment | Hazard Undetermined |
| 432. | Oahu | Mokuleia | State | Dillingham Ranch | NFA | Response | Hazard Managed With Institutional Controls |
| 433. | Oahu | Nanakuli | State | Hakimo Road, Maile | Ongoing | Assessment | Hazard Undetermined |
| 434. | Oahu | Nanakuli | State | Kaiser Cement Corp Waianae Point | Ongoing | Assessment | Hazard Undetermined |
| 435. | Oahu | Pearl City | Brownfields | Waimano Home Campus | Ongoing | Assessment | Hazard Managed With Engineering Controls |
| 436. | Oahu | Pearl City | State | Hawaii Army National Guard Waiawa Gulch | Ongoing | Response | Hazard Present |
| 437. | Oahu | Pearl City | State | HECO Generating Station: Waiau | Ongoing | Assessment | Hazard Undetermined |
| 438. | Oahu | Pearl City | State | Pearl City Towing | Ongoing | Assessment | Hazard Undetermined |
| 439. | Oahu | Pearl City | State | Pearl City Urban Garden Center | Inactive | Assessment | Hazard Managed With Institutional Controls |

Hawai'i State Response Program List of Priority Sites - FY 2008

| | <u>Island</u> | <u>Locality</u> | <u>Program Area</u> | <u>Facility/Site Name</u> | <u>Site Status</u> | <u>Program Action</u> | <u>Potential Hazard and Controls in Place</u> |
|------|----------------------|------------------------|----------------------------|---|---------------------------|------------------------------|--|
| 440. | Oahu | Pearl City | State | Waterfront Manor | Ongoing | Assessment | Hazard Undetermined |
| 441. | Oahu | Wahiawa | State | Flagship 76 #3128 (Jimmy's; Mike's Wahiawa; Unocal SS#3128) | NFA | Assessment | No Hazard |
| 442. | Oahu | Wahiawa | State | Porter Site | Ongoing | Assessment | Hazard Present |
| 443. | Oahu | Wahiawa | State | Wheeler Army Airfield Transformer WAAF-27 | Ongoing | Response | Hazard Managed With Institutional Controls |
| 444. | Oahu | Waialua | PA/SI | Mount Kaala Natural Area Reserve | Ongoing | Assessment | Hazard Undetermined |
| 445. | Oahu | Waialua | VRP | Waialua Sugar Mill Settling Ponds | Ongoing | Response | Hazard Undetermined |
| 446. | Oahu | Waialua | VRP | Waialua Sugar Mill VRP Site | Ongoing | Response | Hazard Managed With Engineering Controls |
| 447. | Oahu | Waianae | State | Hakimo Road Open Dump | Ongoing | Assessment | Hazard Undetermined |
| 448. | Oahu | Waianae | State | HECO Substation: Mikilua Substation | Ongoing | Assessment | Hazard Undetermined |
| 449. | Oahu | Waianae | State | Industrial Technology Tire Pile | Ongoing | Assessment | Hazard Undetermined |
| 450. | Oahu | Waianae | State | Kapiki Junk Yard | Inactive | Assessment | Hazard Undetermined |
| 451. | Oahu | Waimanalo | State | HECO Transformer 27728 (Vault 3032) | Ongoing | Assessment | Hazard Undetermined |
| 452. | Oahu | Waimanalo | State | University of Hawaii, Waimanalo Experimental Farm | Ongoing | Assessment | Hazard Undetermined |
| 453. | Oahu | Waimanalo | State | Waimanalo Areawide Groundwater Contamination | Ongoing | Assessment | Hazard Undetermined |
| 454. | Oahu | Waipahu | State | ABC Corporation Leowaena Street | Ongoing | Assessment | Hazard Undetermined |
| 455. | Oahu | Waipahu | State | Alexander and Baldwin Milltown Lead Contamination | Ongoing | Assessment | Hazard Managed With Institutional Controls |

Hawai'i State Response Program List of Priority Sites - FY 2008

| | <u>Island</u> | <u>Locality</u> | <u>Program Area</u> | <u>Facility/Site Name</u> | <u>Site Status</u> | <u>Program Action</u> | <u>Potential Hazard and Controls in Place</u> |
|------|----------------------|------------------------|----------------------------|--|---------------------------|------------------------------|--|
| 456. | Oahu | Waipahu | State | Hawthorne Pacific Corporation | NFA | Response | No Hazard |
| 457. | Oahu | Waipahu | State | Royal Kunia Elementary School | Ongoing | Assessment | Hazard Undetermined |
| 458. | Oahu | Waipahu | State | Waiawa Correctional Facility | Ongoing | Assessment | Hazard Undetermined |
| 459. | Oahu | Waipahu | State | Waipahu Wells | Ongoing | Assessment | Hazard Undetermined |
| 460. | Oahu | Waipahu | State | Waipio Heights Wells II | Ongoing | Assessment | Hazard Undetermined |
| 461. | Oahu | Waipahu | VRP | Lot 32 Former Waipahu Sugar Mill Arsenic | Ongoing | Response | Hazard Managed With Institutional Controls |
| 462. | Oahu | Waipahu | VRP | Lot 32 Former Waipahu Sugar Mill Diesel Plume and Solvent in Groundwater | Ongoing | Response | Hazard Managed With Institutional Controls |
| 463. | Oahu | Waipahu | VRP | Lots 28 and 29 Former Waipahu Sugar Mill Diesel Plume | NFA | Response | Hazard Managed With Institutional Controls |
| 464. | Oahu | Waipio | State | Ewa Sugar Mill/Oahu Sugar Co. - Waipio Peninsula | Ongoing | Assessment | Hazard Managed With Engineering Controls |

LIST OF HAWAII STATE RESPONSE PROGRAM EMERGENCY RESPONSE NOTIFICATIONS

The Hawaii State Response Program Release Notification Log presented in this section shows a listing of all chemical and petroleum release notifications received by the HEER Office emergency response team during the fiscal year. The Release Notification Log is sorted in order of Island, Locality, and the Case Name.

The Hazardous Evaluation and Emergency Response (HEER) Office received a total of 328 notifications including 197 oil sheen notifications for the historic Chevron's Pipeline at Waiau CT10 area, for a total of 132 separate release cases. Notifications for potential or actual releases of Comprehensive Environmental Response Compensation and Liability Act (CERCLA) hazardous substance(s) or petroleum related substances numbered 117. HEER Office State On Scene Coordinators (SOSCs) performed direct oversight on 56 cases requiring on-site visits or off-scene coordination. Twenty cases were referred to the HEER Office Site Discovery, Assessment and Remediation (SDAR) Section for follow-on non-emergency cleanup prioritization and 17 cases were referred to other agencies.

HEER Office Emergency Response Actions - FY 2008

| <u>Release Notifications*</u> | <u>Chevron Pipeline Oil Spill at Waiau CT10 Area Specific Notifications</u> | <u>Hazardous Substance/Oil Related Responses</u> | <u>Direct On-site or Off-site SOSC Oversight</u> | <u>Cases Referred</u> |
|-----------------------------------|---|--|--|---------------------------|
| 132 * | 197 | 117 | 56 | 37 |

* The 197 Chevron Pipeline Oil Spill at Waiau CT10 Area specific notifications are counted as one notification

Hawai'i State Response Program Release Notification Log - FY 2008

| <u>Island</u> | <u>Locality</u> | <u>Case Name</u> | <u>Case Number</u> | <u>Incident</u> | <u>Substance</u> | <u>Media</u> |
|----------------------|------------------------|---|---------------------------|--|--------------------------------|---------------------|
| 1. Hawaii | Hilo | Hawaii Petroleum, Inc. Hilo Pier #3 | 20070829-0659 | While loading a boat, tanker truck's suction hose vibrated loose and released diesel onto the pier and into Hilo Bay | Diesel Fuel | Ocean |
| 2. Hawaii | Hilo | HELCO Generating Station: Hill/Kanoielehua | 20070825-1240 | In preparation for painting, hydroblasting caused a small hole, releasing oil; oil contained within a sub-berm made; berm has earthen bottom. Oil collected via vacuum truck and being burned in the generating units. | Fuel Oil | Soil |
| 3. Hawaii | Hilo | Hilo Bay Boat Ramp | 20070707-2030 | Release of 200 Gals of Diesel into Wailua River from Hilo Bay Boat Ramp | Diesel Fuel | Ocean |
| 4. Hawaii | Hilo | Hilo Harbor | 20080409-1353 | Diesel release due to unknown Reasons | Diesel Fuel | Ocean |
| 5. Hawaii | Hilo | Pole Mount Transformer 13946 | 20080208-1450 | Transformer Failure | Ergon HyVolt II Insulating Oil | Soil |
| 6. Hawaii | Hilo | Pole Mount Transformer 24275 | 20080208-1448 | Rust decayed transformer release | HYVOLT II | Soil |
| 7. Hawaii | Hilo | Pole Mount Transformer 3613 | 20080208-1449 | Release from Transformer due to transport | HYVOLT II | Soil |
| 8. Hawaii | Hilo | Yahdah Services Hilo Bay Diesel | 20070705-0915 | 125 gal diesel tote fell out of truck making turn. 15-20 gal diesel ran into Hilo Bay | Diesel Fuel | Ocean |
| 9. Hawaii | Kailua-Kona | HELCO Generating Station: Keahole | 20080109-1437 | Overfill of Oil Water Separator | Diesel Fuel | Soil |
| 10. Hawaii | Kailua-Kona | Kailua Kona Alleged High Radiation Readings | 20070805-1300 | Caller alleging 5 R/hr readings | None | Air |

Hawai'i State Response Program Release Notification Log - FY 2008

| <u>Island</u> | <u>Locality</u> | <u>Case Name</u> | <u>Case Number</u> | <u>Incident</u> | <u>Substance</u> | <u>Media</u> |
|----------------------|------------------------|--|---------------------------|---|-------------------------------|---------------------|
| 11. Hawaii | Kawaihae Harbor | Kawaihae Harbor Unknown Sheen | 20080307-0750 | Unknown Sheen | Sheen | Ocean |
| 12. Hawaii | Upolo | Hamakua HWY 19 | 20080308-0550 | Release from truck fuel tank | Diesel Fuel | Asphalt |
| 13. Kauai | Donkey Beach | Kauai Donkey Beach | 20071026-1310 | Compressed gas cylinder washed up on beach, resting 20 feet above high tide line | Carbon dioxide compressed gas | Lava |
| 14. Kauai | Kapaa | Fiji Beach Park | 20071023-1555 | Possible land mine discovered while excavating for a bike path in Kapaa | Land Mine | Soil |
| 15. Kauai | Kapaa | Wailua River1 | 20080312-1200 | Unknown Sheen | Sheen | Other |
| 16. Kauai | Kipu Kai | Unknown Sheen NRC 844548 | 20070806-0916 | Unknown Sheen; unknown source | Oil | Ocean |
| 17. Kauai | Pacific Ocean | Pride of American NCL NRC 845155 | 20070810-1040 | Caller stated that he notice a trail of materials coming from a cruise vessel in the Pacific Ocean while he was in an airplane. | Unknown Sheen | Ocean |
| 18. Kauai | Port Allen | Port Allen Harbor Unknown Sheen NRC 844614 | 20070806-0917 | Unknown Sheen; unknown source | Oil | Ocean |
| 19. Lanai | Lanai | Lanai Water Well #3 | 20080124-0800 | Leaking 150-lb chlorine cylinder | Chlorine | Air |
| 20. Lanai | Lanai City | Miki Basin Generating Station | 20070816-1030 | Release of oil during maintenance | Engine Oil 40SAE | Soil |
| 21. Maui | Kahului | MECO Kahului Harbor Pier 1 MECO Pipelines | 20071107-0820 | Structural Failure | Oil | Ocean |
| 22. Maui | Kahului | Pad-Mount Transformer MECO 11422 | 20071217-0716 | Rust decayed Transformer | HYVOLT II | Soil |
| 23. Maui | Kahului | Pad-Mount Transformer MECO 12132 | 20080409-0911 | Rust decayed Transformer | HYVOLT II | Soil |
| 24. Maui | Kahului | Pad-Mount Transformer MECO 12136 | 20071217-1540 | Rust-decayed Transformer housing caused the release | HYVOLT II | Soil |

Hawai'i State Response Program Release Notification Log - FY 2008

| <u>Island</u> | <u>Locality</u> | <u>Case Name</u> | <u>Case Number</u> | <u>Incident</u> | <u>Substance</u> | <u>Media</u> |
|----------------------|------------------------|---|---------------------------|--|-------------------------|---------------------|
| 25. Maui | Kahului | Pad-Mount Transformer MECO 12136 | 20071218-1342 | Rust decayed Transformer | HYVOLT II | Soil |
| 26. Maui | Kahului | Pad-Mount Transformer MECO 12712 | 20080129-1519 | Rust decayed Transformer | HYVOLY II | Soil |
| 27. Maui | Kahului | Pad-Mount Transformer MECO 13924 | 20080129-1520 | Rust decayed Transformer | HYVOLT II | Soil |
| 28. Maui | Kahului | Pad-Mount Transformer MECO 14571 | 20080107-1443 | Rust decayed Transformer | HYVOLY II | Soil |
| 29. Maui | Kahului | Pad-Mount Transformer MECO 14627 | 20080613-1428 | Rust decayed Transformer | HYVOLT II | Impermeable Surface |
| 30. Maui | Kahului | Pad-Mount Transformer MECO 5277 | 20080314-1101 | Rust decayed Transformer | HYVOLT II | Soil |
| 31. Maui | Kahului | Pad-Mount Transformer MECO 6437 | 20080313-1312 | Rust decayed Transformer | HYVOLT II | Soil |
| 32. Maui | Kahului | Pad-Mount Transformer MECO Containment Bucket Release 244 | 20080102-1454 | Storm Induced wind blew over containment bucket | HYVOLT II | Soil |
| 33. Maui | Kapalua | Pailolo Channel NRC 859865 | 20080116-1435 | Unknown possible oil release | Oil | Ocean |
| 34. Maui | Kapalua | Pailolo Channel NRC 860578 | 20080124-1742 | Due to a loose hose connection 1 Barrel of diesel was released approx. 80 nm from Oahu | Diesel Fuel | Ocean |
| 35. Maui | Lahaina | Kamehameha Schools Lahainaluna Road Transformers | 20080116-1130 | Vandalized transformers - potential release | Oil | Soil |
| 36. Maui | Lahaina | Launiupoko Transformer | 20080116-1100 | Water reservoir location where old transformers potentially containing PCBs were located | Oil | Soil |
| 37. Maui | Lahaina | Puukolii Old Pioneer Mill Transformers | 20070711-1100 | Abandoned transformers; no labels; unknown if there is still oil and/or PCBs | Oil | Other |

Hawai'i State Response Program Release Notification Log - FY 2008

| <u>Island</u> | <u>Locality</u> | <u>Case Name</u> | <u>Case Number</u> | <u>Incident</u> | <u>Substance</u> | <u>Media</u> |
|----------------------|------------------------|--|---------------------------|--|--------------------------------|---------------------|
| 38. Maui | Lahaina | Shaw Street Old Pioneer Mill Transformers | 20070710-0850 | Vandalism destroyed transformers, some of which have labels with >50 ppm PCB | Oil | Soil |
| 39. Maui | Lahaina | Train Turnaround Transformer Substation Site | 20080116-1230 | Potential Release of transformer oil possibly containing PCBs | Oil | Soil |
| 40. Maui | Lahainaluna | Pioneer Mill Lahainaluna Road Transformers | 20080116-1145 | Transformers - placards indicate no PCBs but possibly contained PCBs in past | Oil | Soil |
| 41. Maui | Maui | Maui Electric Padmount Transformer No 12760 | 20071027-1728 | Motor vehicle accident/ struck transformer | Mineral Oil | Soil |
| 42. Maui | Olowalu | Luawai Road Transformer | 20080116-1035 | Alleged transformers with potential to contain PCBs | Oil | Soil |
| 43. Maui | Olowalu | Olowalu Shaft Transformer Substation | 20080116-1010 | Transformers with PCB labels | Oil | Soil |
| 44. Maui | Olowalu | Olowalu Shaft Transformer Substation | 20080116-1010 | Transformers with PCB labels | Poly chlorinated biphenyls | Soil |
| 45. Maui | Puunene | Puunene Sugar Mill Seed Treatment Plant | 20080612-0905 | From hydraulic system of a dip tank. Spill was to asphalt and soil | Hydraulic Oil | Asphalt/Soil |
| 46. Maui | Puunene | Puunene Sugar Mill Transmission Oil Spill | 20070820-1011 | Release due to cane hauler truck blew transmission. | Transmission Fluid | Soil |
| 47. Maui | Wailuku | Pole Mount Transformer MECO 13205 | 20080314-1102 | Rust decayed Transformer | Ergon HYVOLT II | Soil |
| 48. Maui | Wailuku | Pole Mount Transformer MECO 13374 | 20080409-0912 | Rust decayed Transformer | Ergon HyVolt II Insulating Oil | Soil |
| 49. Maui | Wailuku | Pole Mount Transformer MECO 13930 | 20071218-1341 | Due to Corrosion Transformer released partial contents | Ergon HYVOLT II | Soil |

Hawai'i State Response Program Release Notification Log - FY 2008

| <u>Island</u> | <u>Locality</u> | <u>Case Name</u> | <u>Case Number</u> | <u>Incident</u> | <u>Substance</u> | <u>Media</u> |
|----------------------|------------------------|--|---------------------------|--|-------------------------|---------------------|
| 50. Maui | Wailuku | Pole Mount Transformer MECO 14920 | 20080109-1421 | Storm winds blew transformer off pole | HYVOLT II | Soil |
| 51. Maui | Wailuku | Pole Mount Transformer MECO 3610 | 20080107-1444 | Rust decayed transformer release | HYVOLT II | Soil |
| 52. Maui | Wailuku | Pole Mount Transformer MECO 4023 | 20080129-1521 | Rust decayed transformer release | HYVOLT II | Soil |
| 53. Maui | Wailuku | Pole Mount Transformer MECO 5795 | 20080227-1510 | Transformer damaged during Transport | HYVOLY II | Soil |
| 54. Maui | Wailuku | Pole Mount Transformer MECO 8812 | 20071217-0715 | Due to Corrosion Transformer released partial contents | Ergon HYVOLT II | Soil |
| 55. Maui | Wailuku | Pole Mount Transformer MECO 9019 | 20080305-1338 | Rust decayed transformer release | HYVOLT II | Soil |
| 56. Molokai | Hoolehua | Grace Pacific Corporation Manawainui, Molokai Facility | 20080618-1626 | 42 abandoned drums discovered during clearing land area. Drums look to be old and soil stained from unknown substance. | Unknown | Soil |
| 57. Oahu | Haleiwa | Haleiwa Chevron Service Station | 20071026-1415 | Report that baseline site assessment shows automotive debris and soil samples above EAL for lead and TPH. Area is adjacent to fishpond/ocean connected | TPH, lead above EAL | Soil |
| 58. Oahu | Hick am Air Force Base | Hickam Air Force Base | 20070908-0825 | Broken fuel valve on jet causing fuel to be released on tarmac. | JP 8 | Asphalt |

Hawai'i State Response Program Release Notification Log - FY 2008

| <u>Island</u> | <u>Locality</u> | <u>Case Name</u> | <u>Case Number</u> | <u>Incident</u> | <u>Substance</u> | <u>Media</u> |
|----------------------|------------------------|---|---------------------------|--|-------------------------|---------------------|
| 59. Oahu | Honolulu | 2004 Republic Street UST | 20080302-1104 | While excavating for a sewer line contractor discovered an old fuel tank. Contractor was in the process of removing tank when approx. 5 gal of its contents was spilled. | Waste Oil | Soil |
| 60. Oahu | Honolulu | 2165 10th Avenue | 20080222-1140 | Abandoned acetylene cylinder, 5-gallon metal container of concrete primer, and 1 car battery | Acetylene | Asphalt |
| 61. Oahu | Honolulu | 3109 Pualei Circle | 20080615-1924 | Complainant claims a contractor for the owner is disposing asbestos illegally. | Asbestos | Air |
| 62. Oahu | Honolulu | Aircraft Service International Group - Sand Island (ASIG) | 20080110-1448 | Structural Failure | Jet Fuel | Groundwater |
| 63. Oahu | Honolulu | Ala Wai Boat Harbor Sheen Sighting | 20080307-1838 | Sheen at the 400 row | Sheen | Ocean |
| 64. Oahu | Honolulu | Ala Wai Harbor, Oil Sheen | 20080214-0850 | Unknown Sheen located between the Ala Moana and Kalakaua Bridges | Sheen | Ocean |
| 65. Oahu | Honolulu | American Savings Bank - Aina Haina | 20070710-1730 | Alleged white powder on incoming money | Unknown | Within Facility |
| 66. Oahu | Honolulu | Beretania Street Public Restroom | 20080619-0421 | Blood found in public restroom | Blood | Concrete |
| 67. Oahu | Honolulu | C&C HONOLULU SEWER | 20080403-0705 | Wastewater inspector reports black oil found in County sewer | Black Oil | Sewer |
| 68. Oahu | Honolulu | Chevron Bulk Fuel Loading Rack Driveway Access | 20070803-1657 | Reports finding oil in soil when digging at driveway entrance | Oil | Soil |
| 69. Oahu | Honolulu | Diamond Head Seafood Company | 20070920-0930 | Seafood waste leaking from trash bin onto Robello Lane with a foul odor | Seafood waste | Asphalt |

Hawai'i State Response Program Release Notification Log - FY 2008

| <u>Island</u> | <u>Locality</u> | <u>Case Name</u> | <u>Case Number</u> | <u>Incident</u> | <u>Substance</u> | <u>Media</u> |
|----------------------|------------------------|--|---------------------------|--|-------------------------|---------------------|
| 70. Oahu | Honolulu | Honolulu Harbor - Young Brothers | 20080522-0650 | While removing a 500 Gal. Tote, operator accidentally knocked the tote over releasing approx. 300 gals. onto the deck & approx. 50 gals into Honolulu Harbor | Waste oil | Ocean |
| 71. Oahu | Honolulu | Honolulu Harbor Oil Sheen | 20080211-0800 | Unknown Sheen observed by USCG at Piers 10-11 | Sheen | Ocean |
| 72. Oahu | Honolulu | Honolulu Harbor Oil Sheen | 20080212-0905 | Unknown Sheen Pier 24 | Sheen | Ocean |
| 73. Oahu | Honolulu | Honolulu Harbor Pier 10 | 20071105-1341 | High sulfur diesel spill due to leaking flange during transfer of material. Material spilled into water. | Diesel Fuel | Ocean |
| 74. Oahu | Honolulu | Honolulu Harbor Pier 30 | 20080328-0843 | 5-gallon red-dyed diesel fuel from M/V Moana Hele | Diesel Fuel | Ocean |
| 75. Oahu | Honolulu | Honolulu Harbor Pier Drum | 20070723-1402 | Caller is reporting a discovery of a hazardous material in a drum discovered at the pier. | Unknown | Other |
| 76. Oahu | Honolulu | Honolulu Harbor Piers 1-30 | 20070827-0718 | Unknown Sheen, unknown source; estimated size - > 1 gallon | Oil | Ocean |
| 77. Oahu | Honolulu | Jeannette and Harry Weinberg Maluhia Elderly Housing | 20071018-0929 | Allegations of use of hazardous substances that is causing pollution and deaths to residents | Unknown | Ground |
| 78. Oahu | Honolulu | Jiffy Lube King Street | 20080109-1420 | Alleged oil dumping into trash bin | Motor Oil | Concrete |
| 79. Oahu | Honolulu | Kakoi St / Kili Hau St | 20070905-1230 | Dye Test conducted by Eckard Brandes, Inc | Rodamine Dye | Other |

Hawai'i State Response Program Release Notification Log - FY 2008

| <u>Island</u> | <u>Locality</u> | <u>Case Name</u> | <u>Case Number</u> | <u>Incident</u> | <u>Substance</u> | <u>Media</u> |
|----------------------|------------------------|---|---------------------------|--|-------------------------|---------------------|
| 80. Oahu | Honolulu | Kalani Street, drums | 20070831-1430 | 2 Abandon Drums on roadway behind Ross's | Motor Oil | Asphalt |
| 81. Oahu | Honolulu | Lyon Arboretum Cottages A and G | 20080605-1610 | Limited Phase II Investigation Lyon Arboretum Cottage A and Cottage G 3860 Manoa Road | Lead | Soil |
| 82. Oahu | Honolulu | Matson Pier 51B | 20080423-1427 | Hydraulic hose failure | Hydraulic Oil | Ocean |
| 83. Oahu | Honolulu | Meadow Gold Dairies (Ice Cream Plant) | 20071212-1530 | Release from a tank | Oil | Soil |
| 84. Oahu | Honolulu | Mississippi Voyager Diesel Release | 20071004-1400 | Ultra Low Sulfur Diesel Release during off loading of Mississippi Voyager | Diesel Fuel | Ocean |
| 85. Oahu | Honolulu | MV Kaimikai-O-Kanalua Pier 45 UH Snug Harbor Diesel | 20071011-1150 | Research vessel cracked diesel tank leaked to graywater tank during off-loading. Shore side sewer line leaked oil and sewage to ocean when graywater tank pumped to shore. | Oily Water Mixture | Ocean |
| 86. Oahu | Honolulu | Pier 35 Oil Sheen | 20071022-1230 | Caller reports oil coming from under Pier 35 | Oil | Ocean |
| 87. Oahu | Honolulu | Pole-Mount Transformer HECO 54734 | 20071016-1057 | Due to Corrosion Transformer released partial contents onto roadway | Ergon HYVOLT II | Asphalt |
| 88. Oahu | Honolulu | Puuhale/ Kahai Street | 20080220-0830 | 8 Abandon 5 gal pails of grease trap material | Cooking Grease | Asphalt |
| 89. Oahu | Honolulu | Royal Gardens Hotel Diesel | 20071029-0953 | Diesel contamination in soil above EAL under diesel drums held to contain cooking oil | Diesel Fuel | Soil |

Hawai'i State Response Program Release Notification Log - FY 2008

| <u>Island</u> | <u>Locality</u> | <u>Case Name</u> | <u>Case Number</u> | <u>Incident</u> | <u>Substance</u> | <u>Media</u> |
|----------------------|------------------------|--|---------------------------|--|-------------------------|----------------------|
| 90. Oahu | Honolulu | Smith Maritime Tug Nunui | 20071015-0835 | Hydraulic oil discharged into the water from a leaking valve on a crane | Hydraulic Oil | Ocean |
| 91. Oahu | Honolulu | Tanks at Puowaina Dr | 20070823-1100 | Call forwarded from SHWB. HFD called to report numerous propane and freon tank at 2129 Puowaina Drive. | Propane and Freon | Abandoned Containers |
| 92. Oahu | Honolulu | Theo Davies Caterpillar Repair Site | 20071211-1234 | On Wednesday 120507, caller contacted SDAR to report the discovery of free product and stained soils at the site. He was hired by the RP to report the findings. | Petroleum | Soil |
| 93. Oahu | Honolulu | Unknown Sheen Ala Moana Park | 20071114-1559 | Caller reporting unknown sheen from unknown source. | Unknown | Ocean |
| 94. Oahu | Honolulu | USCG Cutter Hickory | 20080128-1352 | Discharge of hydraulic oil due to a ruptured Hydraulic hose | Hydraulic Oil | Ocean |
| 95. Oahu | Kahala | 976 Hunakai | 20071017-1205 | Complainant concerned about neighbors "injecting" poison into their home | Unknown | Air |
| 96. Oahu | Kailua | 1310A Mokulua Drive | 20080618-1843 | Lithium Battery Pack washes up on the beach | Lithium Battery | Ocean |
| 97. Oahu | Kailua | Grace Pacific Kapaa Asphalt Plant Diesel Spill | 20071030-1000 | Workers overfilled 200 gal diesel day tank absorbed with fines washed to drainage ditch leading to Kawainui Marsh | Diesel Fuel | Soil |
| 98. Oahu | Kailua | Kailua 76 #4342 (Unocal) | 20070813-1554 | Hydraulic Hoist Closure Assessment | Petroleum | Soil |

Hawai'i State Response Program Release Notification Log - FY 2008

| <u>Island</u> | <u>Locality</u> | <u>Case Name</u> | <u>Case Number</u> | <u>Incident</u> | <u>Substance</u> | <u>Media</u> |
|----------------------|------------------------|--|---------------------------|--|-------------------------|-------------------------|
| 99.Oahu | Kailua | Kailua Fire Station | 20080221-0845 | Abandon Hg Found at station | Mercury | Other |
| 100.Oahu | Kalaeloa | Kalaeloa Harbor, Pier 5 | 20070825-0642 | Unknown sheen, unknown source | Oil | Ocean |
| 101.Oahu | Kalaeloa | Kalaeloa/Ko Olina Harbor | 20070909-1515 | Unknown Off road diesel(red) found at Harbor entrance | Diesel Fuel | Ocean |
| 102.Oahu | Kalihi | Kamanaiki Place | 20070829-1900 | Caller describing white liquid flowing downhill; investigated and resident admitted rinsing paintbrush | Paint | Soil |
| 103.Oahu | Kalihi | Kerr Pacific Corporation dba HFM Foodservice | 20070806-0806 | Accident - tractor trailer bumped AST; helper moved tank causing spill | Motor Oil | Asphalt |
| 104.Oahu | Kaneohe | Caesar's Cleaners | 20070822-1010 | Release discovered in conjunction with a potential property transaction | Tetachloro ethylene | Soil |
| 105.Oahu | Kaneohe | Kaneohe Bay | 20080313-1001 | Gasoline odor coming from the bay area | Gasoline | Ocean |
| 106.Oahu | Kaneohe | Kaneohe Bay Drive near Castle High School | 20070926-1430 | Over spraying of Round-up by C&C Road Maintenance | Round-up | Air |
| 107.Oahu | Kaneohe | Kaneohe Bay Drive Sea Marker | 20070803-1731 | Sea marker washed ashore from Kaneohe Bay | None | Other |
| 108.Oahu | Kaneohe | Kulana Nani Apts. | 20071008-0810 | Drum labeled Hazwaste left unattended in parking lot | Hazwaste | Drum or Other Container |
| 109.Oahu | Kapolei | BHP Gas Express (Station # 55) | 20080314-0757 | Complaint of a gasoline spill allegedly not cleaned up | Gasoline | Concrete |
| 110.Oahu | Kapolei | Chevron Products Company Hawaii Refinery | 20080623-0058 | Nitric Oxides release from crude flare stack due to planned maintenance activities | Nitric Oxides | Air |

Hawai'i State Response Program Release Notification Log - FY 2008

| <u>Island</u> | <u>Locality</u> | <u>Case Name</u> | <u>Case Number</u> | <u>Incident</u> | <u>Substance</u> | <u>Media</u> |
|----------------------|------------------------|---|------------------------------------|--|-------------------------|---------------------|
| 111. Oahu | Kapolei | Chevron USA Products Co., Hawaii Refinery | 20080213-0700 | Valve was left open due operator error causing a release | Other Oil | Soil |
| 112. Oahu | Kapolei | Refinery Kapolei Flare Stack Release | 20070912-2030 | Flare Stack Release due to process unit shutdown | Sulfur Dioxide | Air |
| 113. Oahu | Kapolei | Refinery Kapolei Hydrocracker Shutdown | 20080318-1430 | Hydrocracker shutdown for unknown reasons | SO2 | Air |
| 114. Oahu | Kapolei | Single Buoy Mooring | 20070925-1306 | Caller reported oil sheen 1/2 mile off shore due to maintenance activity of disconnecting hose. Cleanup completed. | Crude Oil | Ocean |
| 115. Oahu | Kapolei | Tesoro Hawaii Corporation Kapolei Refinery | 20080217-0723 | Power outage | None | Air |
| 116. Oahu | Lahaina | Kaanapali Transformer Site | 20080116-1200 | Transformers | Oil | Soil |
| 117. Oahu | Makaha | 84-1132 Lahaina Street | 20070717-1011 | Allegations of improper stripping of vehicles and storage of tires | Solid Waste | Other |
| 118. Oahu | Pear Harbor | Unknown Sheen Pearl Harbor NRC 846507 | 20070822-1020 | Caller reported that there is release of material into the environment. A guard at the facility discovered the sheen in the water. Origin unknown. Caller does not believe this is the historic spill. Size: 1' x 1' | Unknown scum | Ocean |
| 119. Oahu | Pearl Harbor | Chevron's Pipeline Oil Spill at Waiau 5/14/96 | * 197 notifications during FY 2008 | CT10 area - Historic Site: Oil sheen in CT10 area. Size: 2' x 2' | Sheen | Ocean |
| 120. Oahu | Pearl Harbor | JP 8 Release Ramp 23C | 20070909-0825 | Due to a faulty fuel valve on aircraft, release of the JP 8 | JP 8 | Concrete |

Hawai'i State Response Program Release Notification Log - FY 2008

| <u>Island</u> | <u>Locality</u> | <u>Case Name</u> | <u>Case Number</u> | <u>Incident</u> | <u>Substance</u> | <u>Media</u> |
|----------------------|------------------------|--|---------------------------|--|-------------------------|---------------------|
| 121. Oahu | Pearl Harbor | Naval Station Pearl Harbor-Bishop Point | 20080211-1322 | Fuel burp while fuel internal tanks. Approx. 1 oz of diesel released in Pearl Harbor | Diesel Fuel | Ocean |
| 122. Oahu | Pearl Harbor | Pearl Harbor Naval Station Tank Farm | 20070926-1350 | During Pressure test to a newly repaired fuel line a segment started to leak. Approx. 27.5 gallons of Marine diesel was released. Testing stopped and clean-up of effected area began. | Diesel Fuel | Soil |
| 123. Oahu | Pearl Harbor | Pearl Harbor Naval Station Tank Farm | 20071004-1315 | During Pressure test to a newly repaired fuel line a segment started to leak. Approx. 50 gallons of Marine diesel was released. Testing was stopped and an assessment was conducted. | Diesel Fuel | Soil |
| 124. Oahu | Pepeekeo | Petroleum Contaminated Soil Pepeekeo Point Subdivision | 20071220-0841 | Neighboring land owner, Hawaiian Rainbows, reports possible petroleum contamination on their property is coming from the Kraus property located on the adjacent lot. Previous land owner is Brewer Industries. Letter of Interest will go to both parties. | Petroleum | Soil |
| 125. Oahu | Salt Lake | Aloha Waste Services | 20071008-1700 | Discharge of 400 gallons of Heavy whipping Cream onto the roadway and adjacent areas | Heavy Whipping Cream | Soil |
| 126. Oahu | Salt Lake | Moanalua High School | 20071009-1500 | While excavating for a planter an unknown grey box with radiation placards was found | Unknown container | Soil |

Hawai'i State Response Program Release Notification Log - FY 2008

| <u>Island</u> | <u>Locality</u> | <u>Case Name</u> | <u>Case Number</u> | <u>Incident</u> | <u>Substance</u> | <u>Media</u> |
|----------------------|------------------------|--------------------------|---------------------------|--|--------------------------|-------------------------|
| 127. Oahu | Wahiawa | 1830 Wilikina Drive | 20070822-1700 | Caller reporting incomplete cleanup of downed transformers. Please reference Case No.: 20070820-1738 | Oil | Asphalt |
| 128. Oahu | Wahiawa | Schofield Army Bldg 747 | 20080331-1437 | DPW reports finding 4900 ppm diesel in soil, suspect UST but UST not found at excavation | Diesel Fuel | Soil |
| 129. Oahu | Waianae | 85-1535 Haleahi Street | 20080516-1231 | Conex container containing 22 drums of perchloroethylene waste | Perchloro-ethylene Waste | Drum or Other Container |
| 130. Oahu | Waianae | 87-569 Kulaaupuni Street | 20070717-1313 | Red-colored soil that gives off white substance | None | Soil |
| 131. Oahu | Waianae | 87-Hakimo Road | 20080513-0800 | Removal of various Hazardous waste, Lead contamination to soils | Solvents & Lead | Soil |
| 132. Oahu | Waimanalo | Waimanalo Beach Drum | 20080201-1410 | Small drum washed ashore containing unknown motor oil | Motor Oil | Ocean |

This page is left intentionally blank.