

DEBRIS TRANSPORT AIR MONITORING

MAUI TDS(OLOWALU) TO PDS(CENTRAL)

June 16, 2025

Prepared for
United States Army Corps of Engineers



Prepared by:



**ECC Constructors LLC
700 Airport Blvd., Suite 250
Burlingame, CA 94010
Tel: 650.347.1555
Fax: 650.347.8789
Corporate@ecc.net**



Debris Transfer Air Monitoring: June 16, 2025

Maui TDS (Olowalu) to PDS (Central) Air Monitoring

Summary:

The Air Monitoring and Surveillance Plan includes the use of real-time particulate monitors located in areas around the active debris removal operations. The AMSP has established Daily Project Limits of 70 ug/m³ for particulates in the PM 2.5 size range and 300 ug/m³ for particulates in the PM 10 size range as Daily Average concentrations. The Plan also establishes Operational Control Action Levels at one-half the Project Limit levels to help ensure effectiveness of operational controls.

The data collected by real-time dust monitors is uploaded via cellular telemetry to a cloud-based data management system. In addition to storing the data, the system allows for communications on a real-time basis by text and email, as well as integration and analysis of the data.

The AMSP has established an alert system with criteria so that operational controls can be investigated and, if necessary, adjusted throughout the day so that the particle concentrations remain below the Project Limit. If any 15-minute block average hits an Operational Alert level, the Air Monitoring Team receives an immediate alert which triggers an investigation. If necessary, operational controls can then be immediately adjusted to preclude a Project Limit exceedance.

Debris transfer began today.

Weather:

No Weather data was collected today.

Station Location Summary:

Maui Station 1 and Maui station 2 were set up at the perimeter of the current TDS. Maui station 3 and Station 4 were set up on Haul Road.

Station Data:

No stations exceeded the Project limit or the Action Level for the day.

		Maui Station 1	Maui Station 2	Maui Station 3	Maui Station 4	Project Limit	Action Level
PM 2.5	Avg, ug/M ³	3	6	6	1	70	35
PM 10	Avg, ug/M ³	6	43	22	1	300	150

Monitoring Station Map:





DAILY AIR MONITORING REPORT

Real-Time Particulates
Maui TDS (Olowalu) to PDS (Central) Air Monitoring
6/16/2025



PM2.5 Particulate Summary

Station ID/Location	Daily Average PM2.5 Conc (mg/m ³)	Max PM2.5 Conc (mg/m ³)	Time of Max
Station 1 (TDS)	0.003	0.009	7:41
Station 2 (TDS)	0.006	0.033	15:52
Station 3 (Haul Road)	0.009	0.092	8:25
Station 4 (Haul Road)	0.001	0.018	6:34

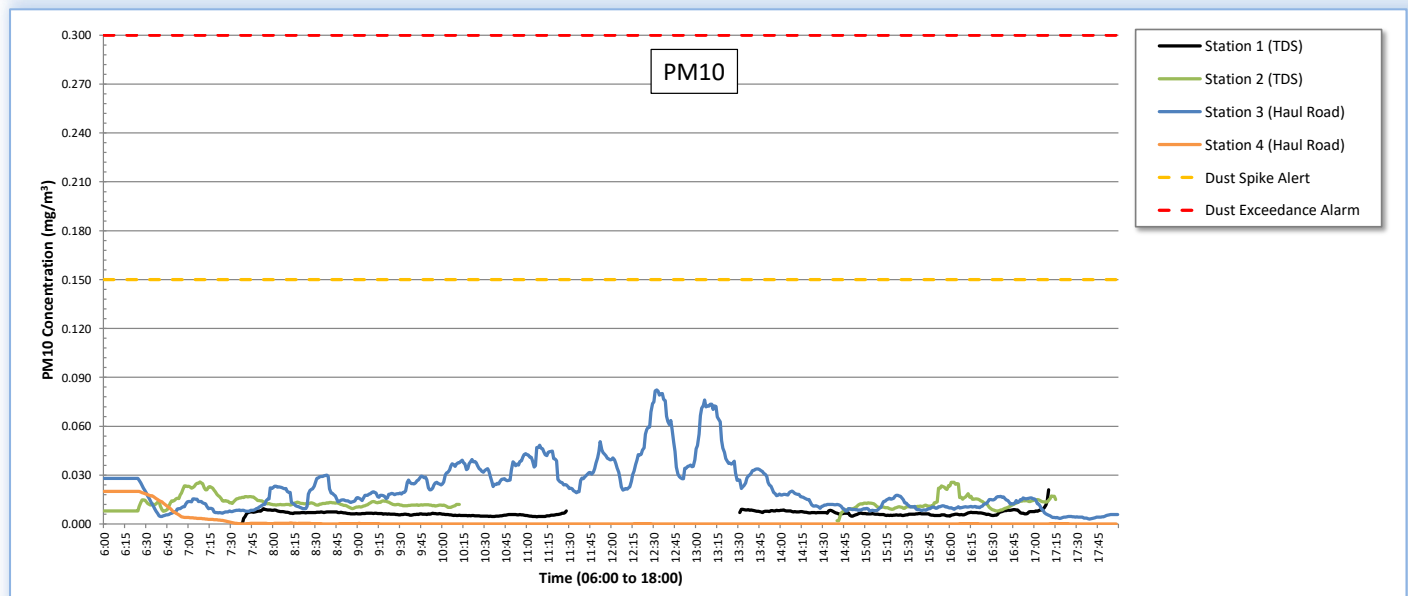
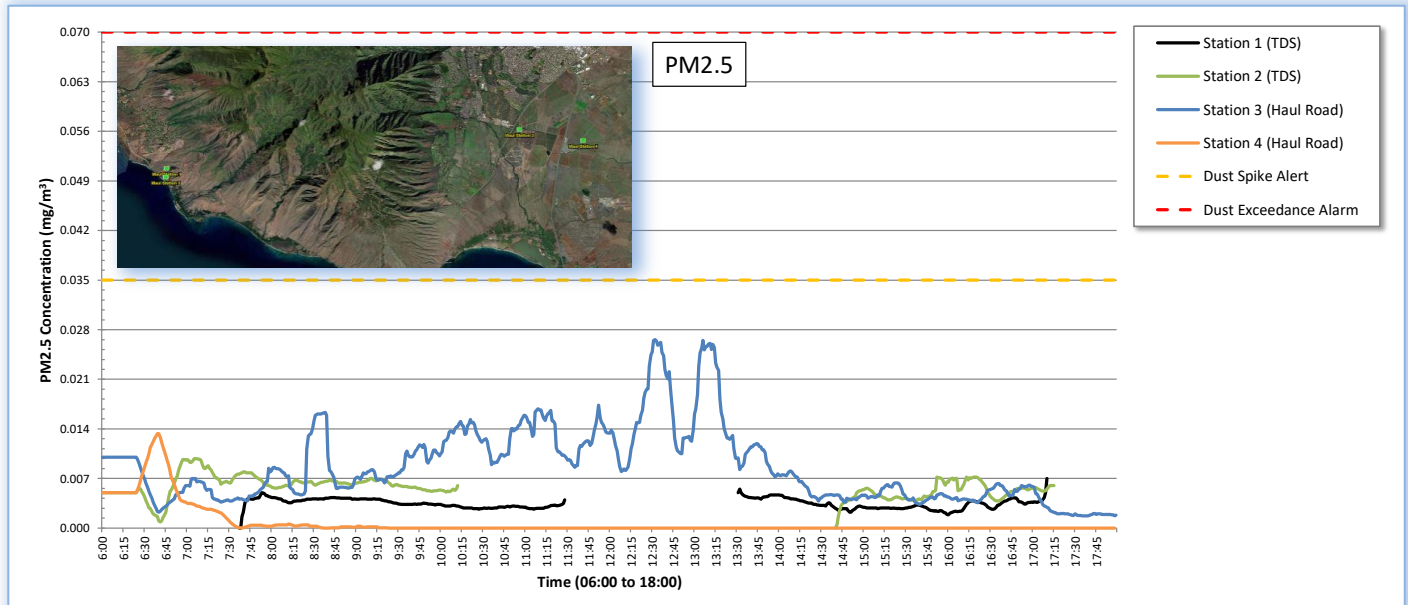
15-Min Avg PM2.5 Conc (mg/m ³)	Max 15-Min PM2.5 Conc (mg/m ³)	Time of Max 15-Min Avg
0.003	0.007	17:10
0.006	0.010	7:05
0.009	0.027	12:32
0.001	0.013	6:39

PM10 Particulate Summary

Station ID/Location	Daily Average PM10 Conc (mg/m ³)	Max PM10 Conc (mg/m ³)	Time of Max
Station 1 (TDS)	0.006	0.025	14:34
Station 2 (TDS)	0.043	0.142	15:52
Station 3 (Haul Road)	0.022	0.185	11:07
Station 4 (Haul Road)	0.001	0.021	6:34

15-Min Avg PM10 Conc (mg/m ³)	Max 15-Min PM10 Conc (mg/m ³)	Time of Max 15-Min Avg
0.006	0.021	17:10
0.013	0.026	7:08
0.022	0.082	12:32
0.001	0.020	6:00

"--" indicates no data or NA



DEBRIS TRANSPORT AIR MONITORING

MAUI TDS(OLOWALU) TO PDS(CENTRAL)

June 17, 2025

Prepared for
United States Army Corps of Engineers



Prepared by:



**ECC Constructors LLC
700 Airport Blvd., Suite 250
Burlingame, CA 94010
Tel: 650.347.1555
Fax: 650.347.8789
Corporate@ecc.net**



Debris Transfer Air monitoring: June 17, 2025

Maui TDS (Olowalu) to PDS (Central) Air Monitoring

Summary:

The Air Monitoring and Surveillance Plan includes the use of real-time particulate monitors located in areas around the active debris removal operations. The AMSP has established Daily Project Limits of 70 ug/m³ for particulates in the PM 2.5 size range and 300 ug/m³ for particulates in the PM 10 size range as Daily Average concentrations. The Plan also establishes Operational Control Action Levels at one-half the Project Limit levels to help ensure effectiveness of operational controls.

The data collected by real-time dust monitors is uploaded via cellular telemetry to a cloud-based data management system. In addition to storing the data, the system allows for communications on a real-time basis by text and email, as well as integration and analysis of the data.

The AMSP has established an alert system with criteria so that operational controls can be investigated and, if necessary, adjusted throughout the day so that the particle concentrations remain below the Project Limit. If any 15-minute block average hits an Operational Alert level, the Air Monitoring Team receives an immediate alert which triggers an investigation. If necessary, operational controls can then be immediately adjusted to preclude a Project Limit exceedance.

Debris transfer continued today.

Weather:

		TDS	Haul Road
Precipitation		unlikely, no rain observed	unlikely, no rain observed
Wind Direction		NE	NNE
Wind Speed	Average	10 mph	14 mph
	Range	7-22 mph	12-32 mph

Station Location Summary:

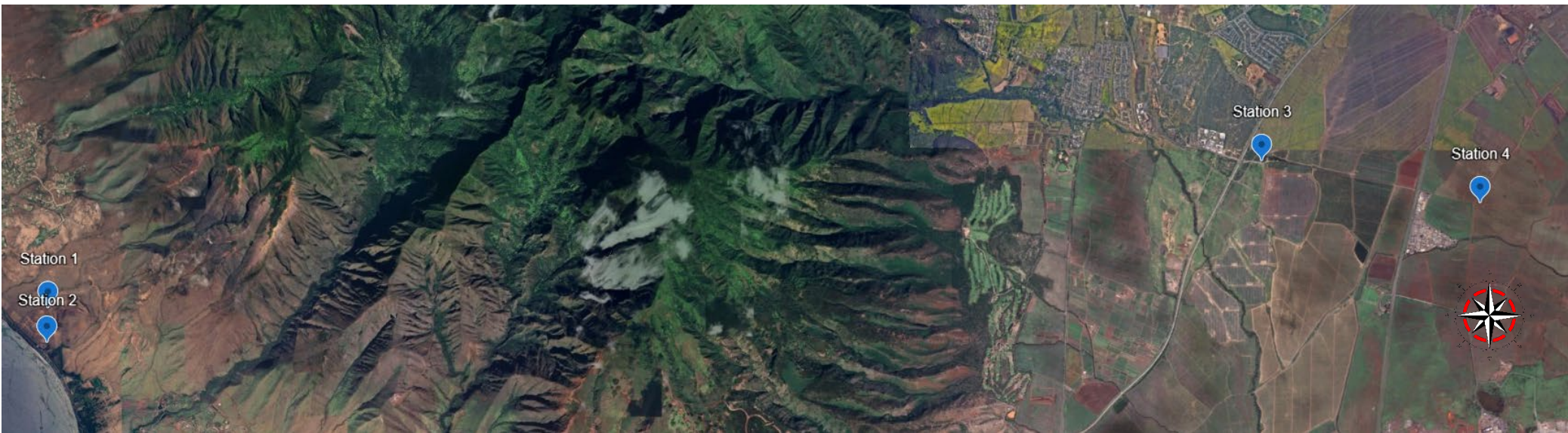
Maui Station 1 and Maui Station 2 were set up at the perimeter of the current TDS. Maui station 3 and Station 4 were set up on Haul Road.

Station Data:

No stations exceeded the Project limit or the Action Level for the day.

		Maui Station 1	Maui Station 2	Maui Station 3	Maui Station 4	Project Limit	Action Level
PM 2.5	Avg, ug/M ³	3	6	6	1	70	35
PM 10	Avg, ug/M ³	6	43	22	1	300	150

Monitoring Station Map:





DAILY AIR MONITORING REPORT

Real-Time Particulates

Maui TDS (Olowalu) to PDS (Central) Air Monitoring

6/17/2025



PM2.5 Particulate Summary

Station ID/Location	Daily Average PM2.5 Conc (mg/m ³)	Max PM2.5 Conc (mg/m ³)	Time of Max
Station 1 (TDS)	0.003	0.052	16:37
Station 2 (TDS)	0.006	0.111	9:03
Station 3 (Haul Road)	0.006	0.035	11:37
Station 4 (Haul Road)	0.000	0.000	6:16

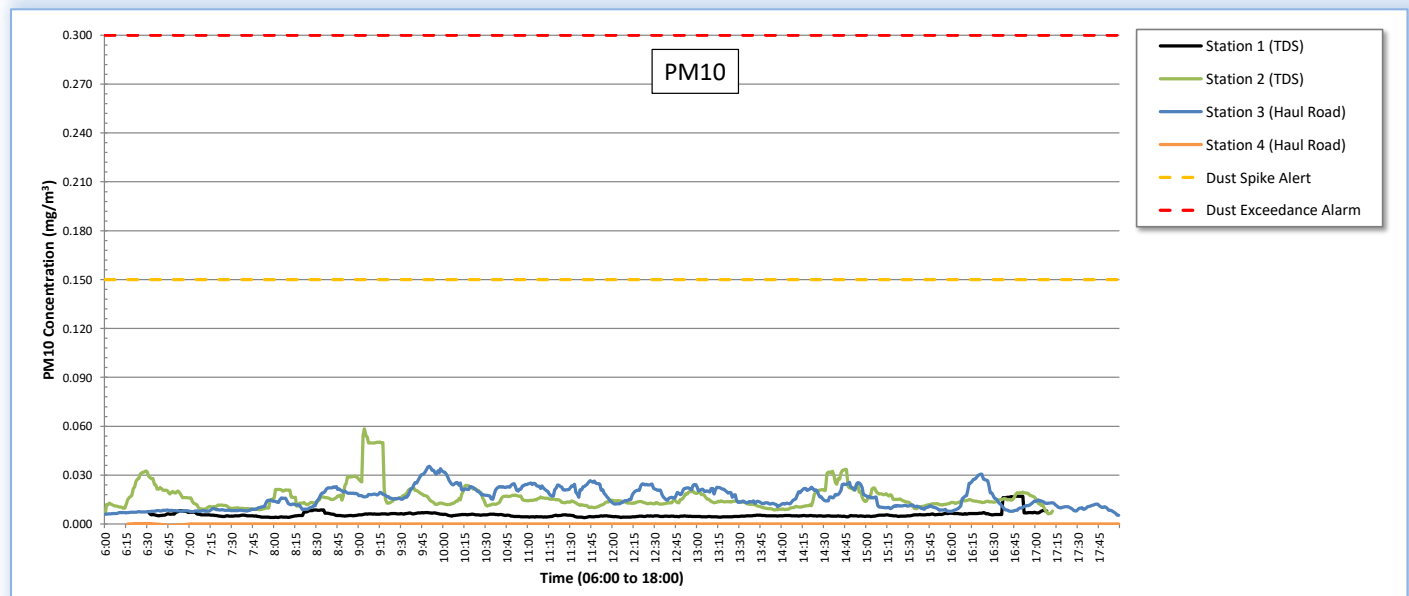
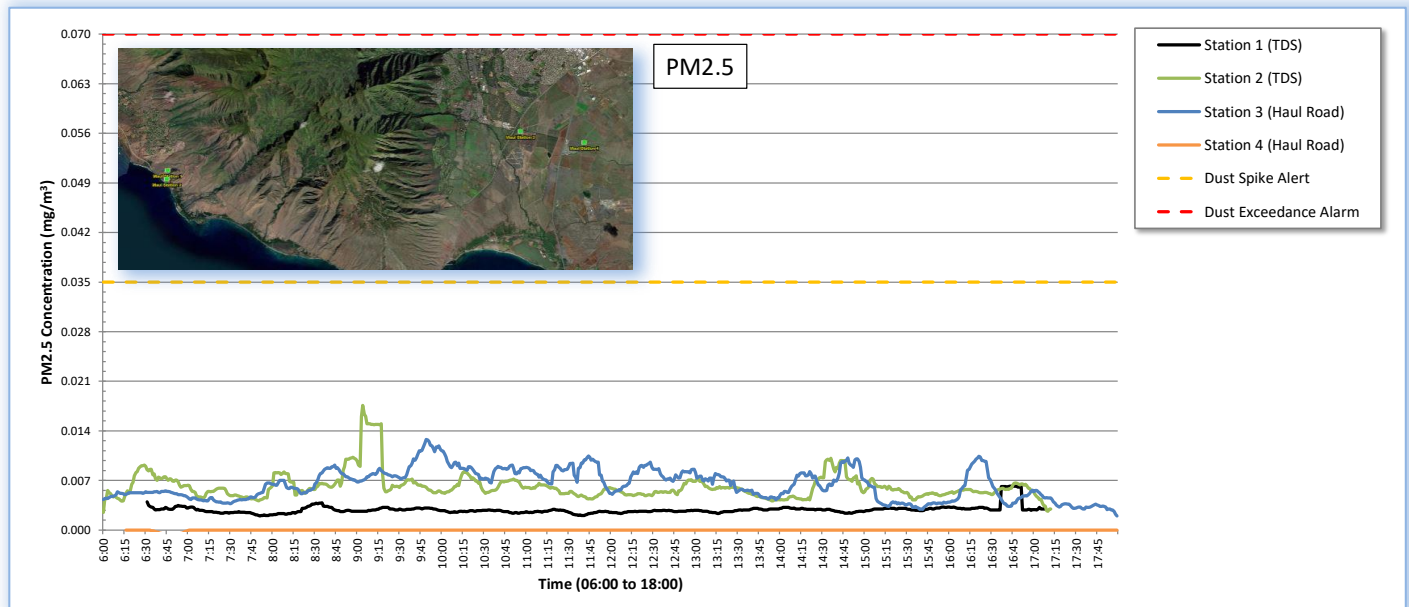
15-Min Avg PM2.5 Conc (mg/m ³)	Max 15-Min PM2.5 Conc (mg/m ³)	Time of Max 15-Min Avg
0.003	0.006	16:46
0.006	0.018	9:04
0.006	0.013	9:49
0.000	0.000	6:16

PM10 Particulate Summary

Station ID/Location	Daily Average PM10 Conc (mg/m ³)	Max PM10 Conc (mg/m ³)	Time of Max
Station 1 (TDS)	0.006	0.162	16:37
Station 2 (TDS)	0.039	0.439	9:03
Station 3 (Haul Road)	0.016	0.095	14:53
Station 4 (Haul Road)	0.000	0.001	6:20

15-Min Avg PM10 Conc (mg/m ³)	Max 15-Min PM10 Conc (mg/m ³)	Time of Max 15-Min Avg
0.006	0.017	16:47
0.016	0.058	9:04
0.016	0.035	9:50
0.000	0.000	6:20

"--" indicates no data or NA



DEBRIS TRANSPORT AIR MONITORING

MAUI TDS(OLOWALU) TO PDS(CENTRAL)

June 18, 2025

Prepared for
United States Army Corps of Engineers



Prepared by:



**ECC Constructors LLC
700 Airport Blvd., Suite 250
Burlingame, CA 94010
Tel: 650.347.1555
Fax: 650.347.8789
Corporate@ecc.net**



Debris Transfer Air monitoring: June 18, 2025

Maui TDS (Olowalu) to PDS (Central) Air Monitoring

Summary:

The Air Monitoring and Surveillance Plan includes the use of real-time particulate monitors located in areas around the active debris removal operations. The AMSP has established Daily Project Limits of 70 ug/m³ for particulates in the PM 2.5 size range and 300 ug/m³ for particulates in the PM 10 size range as Daily Average concentrations. The Plan also establishes Operational Control Action Levels at one-half the Project Limit levels to help ensure effectiveness of operational controls.

The data collected by real-time dust monitors is uploaded via cellular telemetry to a cloud-based data management system. In addition to storing the data, the system allows for communications on a real-time basis by text and email, as well as integration and analysis of the data.

The AMSP has established an alert system with criteria so that operational controls can be investigated and, if necessary, adjusted throughout the day so that the particle concentrations remain below the Project Limit. If any 15-minute block average hits an Operational Alert level, the Air Monitoring Team receives an immediate alert which triggers an investigation. If necessary, operational controls can then be immediately adjusted to preclude a Project Limit exceedance.

Debris transfer continued today.

Weather:

		TDS	Haul Road
Precipitation		unlikely, no rain observed	unlikely, no rain observed
Wind Direction		NW	NNE
Wind Speed	Average	14 mph	19 mph
	Range	8-22 mph	10-30 mph

Station Location Summary:

Maui Station 1 and Maui Station 2 were set up at the perimeter of the current TDS. Maui station 3 and Station 4 were set up on Haul Road.

Station Data:

No stations exceeded the Project limit or the Action Level for the day.

		Maui Station 1	Maui Station 2	Maui Station 3	Maui Station 4	Project Limit	Action Level
PM 2.5	Avg, ug/M ³	3	6	6	0	70	35
PM 10	Avg, ug/M ³	2	38	16	1	300	150

Monitoring Station Map:





DAILY AIR MONITORING REPORT

Real-Time Particulates

Maui TDS (Olowalu) to PDS (Central) Air Monitoring

6/18/2025



PM2.5 Particulate Summary

Station ID/Location	Daily Average PM2.5 Conc (mg/m ³)	Max PM2.5 Conc (mg/m ³)	Time of Max
Station 1 (TDS)	0.003	0.022	15:47
Station 2 (TDS)	0.006	0.066	11:57
Station 3 (Haul Road)	0.006	0.034	9:56
Station 4 (Haul Road)	0.000	0.011	6:14

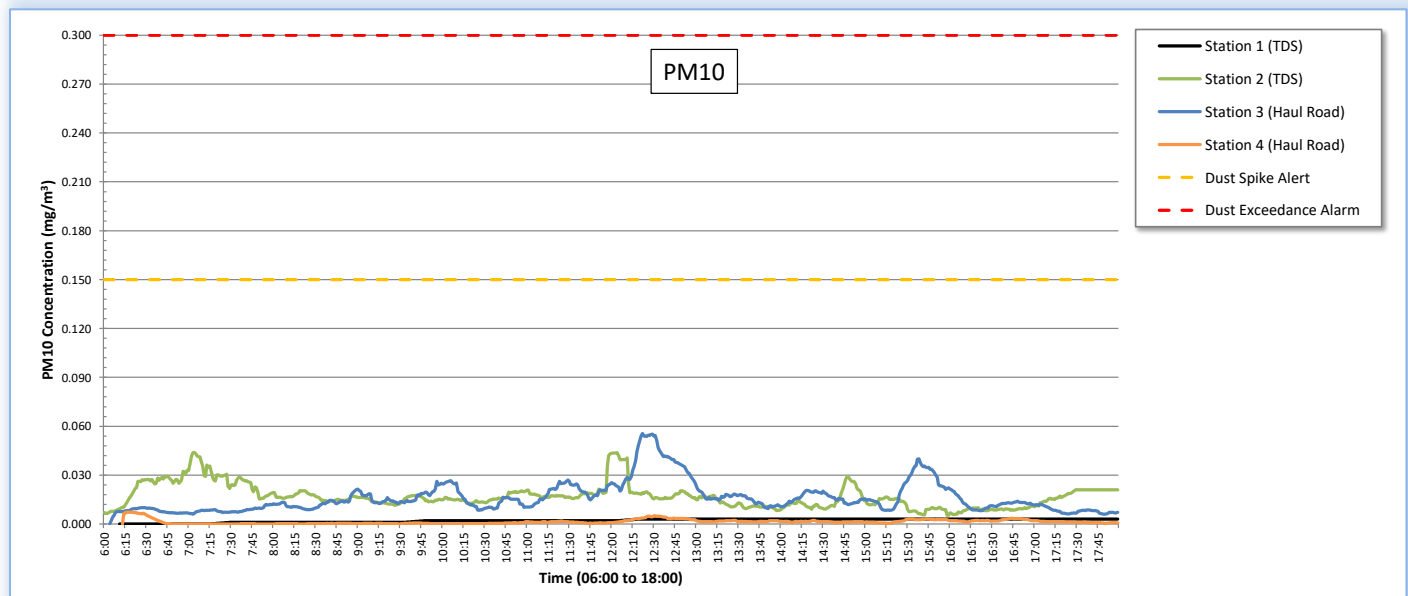
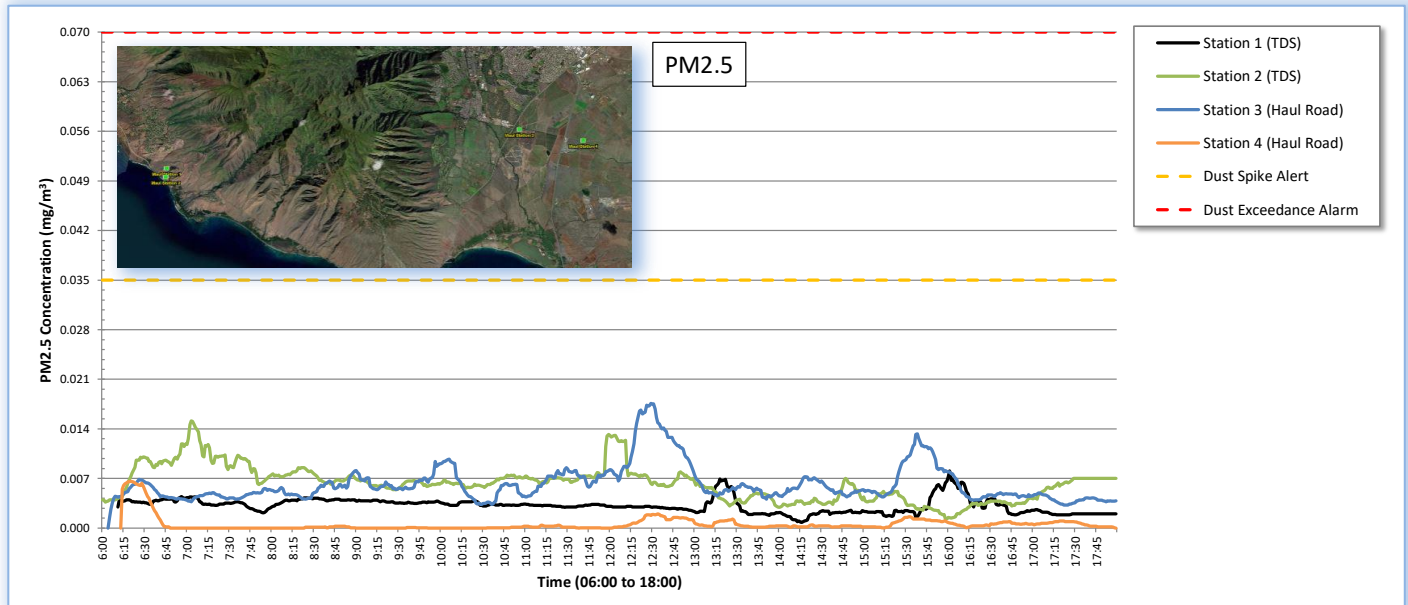
15-Min Avg PM2.5 Conc (mg/m ³)	Max 15-Min PM2.5 Conc (mg/m ³)	Time of Max 15-Min Avg
0.003	0.008	16:01
0.006	0.015	7:03
0.006	0.018	12:29
0.001	0.007	6:20

PM10 Particulate Summary

Station ID/Location	Daily Average PM10 Conc (mg/m ³)	Max PM10 Conc (mg/m ³)	Time of Max
Station 1 (TDS)	0.002	0.003	12:06
Station 2 (TDS)	0.038	0.254	11:57
Station 3 (Haul Road)	0.016	0.093	15:37
Station 4 (Haul Road)	0.001	0.013	6:14

15-Min Avg PM10 Conc (mg/m ³)	Max 15-Min PM10 Conc (mg/m ³)	Time of Max 15-Min Avg
0.002	0.003	12:20
0.017	0.044	7:04
0.016	0.056	12:22
0.001	0.007	6:16

"--" indicates no data or NA



DEBRIS TRANSPORT AIR MONITORING

MAUI TDS(OLOWALU) TO PDS(CENTRAL)

June 19, 2025

Prepared for
United States Army Corps of Engineers



Prepared by:



**ECC Constructors LLC
700 Airport Blvd., Suite 250
Burlingame, CA 94010
Tel: 650.347.1555
Fax: 650.347.8789
Corporate@ecc.net**



Debris Transfer Air monitoring: June 19, 2025

Maui TDS (Olowalu) to PDS (Central) Air Monitoring

Summary:

The Air Monitoring and Surveillance Plan includes the use of real-time particulate monitors located in areas around the active debris removal operations. The AMSP has established Daily Project Limits of 70 ug/m³ for particulates in the PM 2.5 size range and 300 ug/m³ for particulates in the PM 10 size range as Daily Average concentrations. The Plan also establishes Operational Control Action Levels at one-half the Project Limit levels to help ensure effectiveness of operational controls.

The data collected by real-time dust monitors is uploaded via cellular telemetry to a cloud-based data management system. In addition to storing the data, the system allows for communications on a real-time basis by text and email, as well as integration and analysis of the data.

The AMSP has established an alert system with criteria so that operational controls can be investigated and, if necessary, adjusted throughout the day so that the particle concentrations remain below the Project Limit. If any 15-minute block average hits an Operational Alert level, the Air Monitoring Team receives an immediate alert which triggers an investigation. If necessary, operational controls can then be immediately adjusted to preclude a Project Limit exceedance.

Debris transfer continued today.

Weather:

		TDS	Haul Road
Precipitation		unlikely, no rain observed	unlikely, no rain observed
Wind Direction		NW	NNE
Wind Speed	Average	14 mph	19 mph
	Range	8-22 mph	10-30 mph

Station Location Summary:

Maui Station 1 and Maui Station 2 were set up at the perimeter of the current TDS. Maui station 3 and Station 4 were set up on Haul Road.

Station Data:

No stations exceeded the Project limit or the Action Level for the day.

		Maui Station 1	Maui Station 2	Maui Station 3	Maui Station 4	Project Limit	Action Level
PM 2.5	Avg, ug/M ³	2	8	4	0	70	35
PM 10	Avg, ug/M ³	5	39	10	1	300	150

Monitoring Station Map:





DAILY AIR MONITORING REPORT

Real-Time Particulates
Maui TDS (Olowalu) to PDS (Central) Air Monitoring
6/19/2025



PM2.5 Particulate Summary

Station ID/Location	Daily Average PM2.5 Conc (mg/m ³)	Max PM2.5 Conc (mg/m ³)	Time of Max
Station 1 (TDS)	0.002	0.032	14:51
Station 2 (TDS)	0.008	0.261	11:20
Station 3 (Haul Road)	0.004	0.028	9:19
Station 4 (Haul Road)	0.000	0.007	10:39

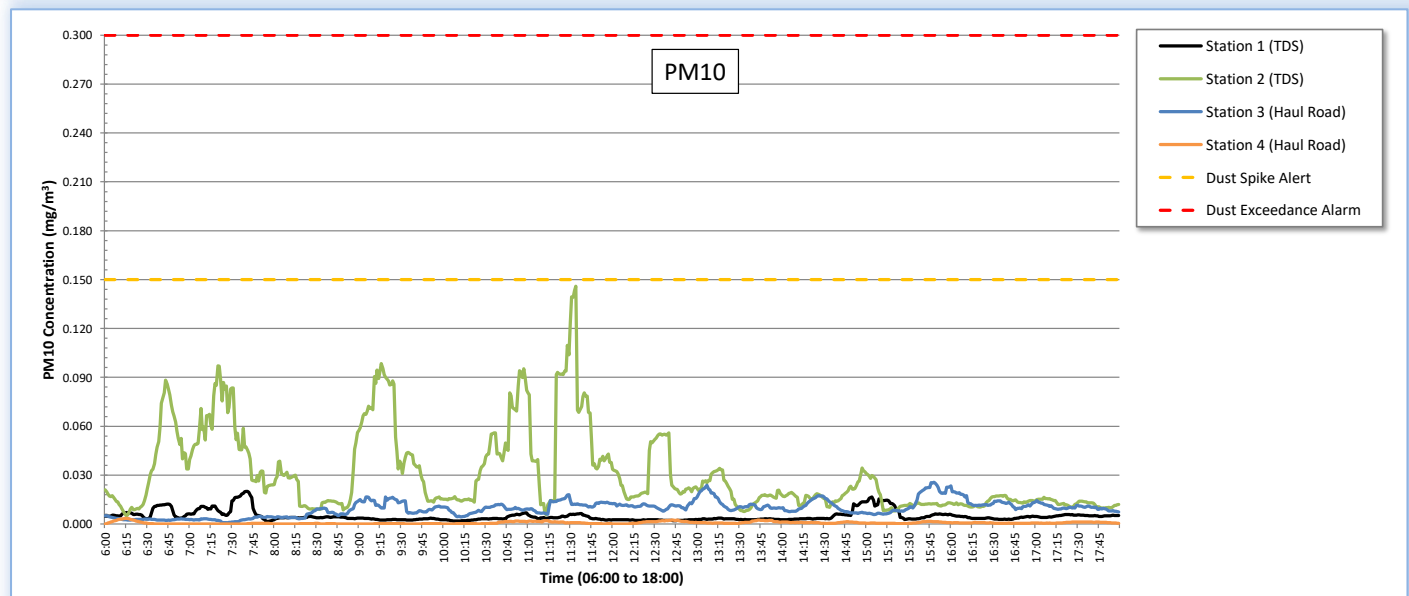
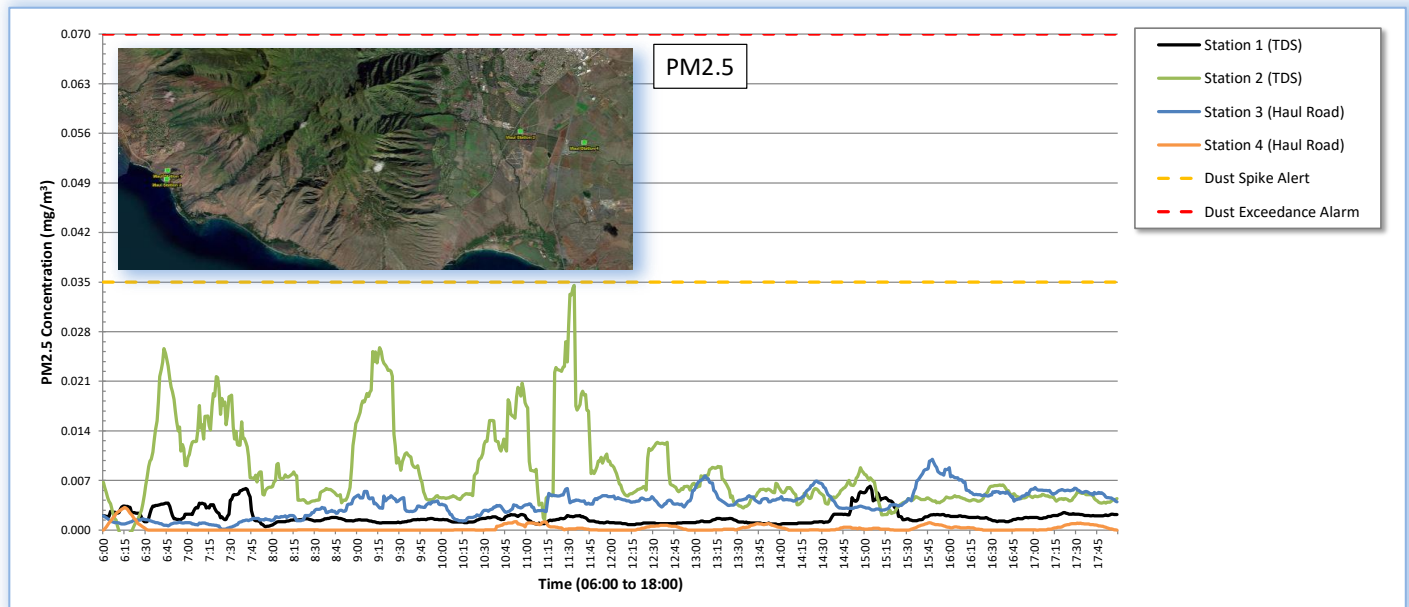
15-Min Avg PM2.5 Conc (mg/m ³)	Max 15-Min PM2.5 Conc (mg/m ³)	Time of Max 15-Min Avg
0.002	0.006	15:04
0.008	0.035	11:34
0.004	0.010	15:48
0.000	0.003	6:15

PM10 Particulate Summary

Station ID/Location	Daily Average PM10 Conc (mg/m ³)	Max PM10 Conc (mg/m ³)	Time of Max
Station 1 (TDS)	0.005	0.098	7:30
Station 2 (TDS)	0.039	1.166	11:20
Station 3 (Haul Road)	0.010	0.106	9:19
Station 4 (Haul Road)	0.001	0.011	13:39

15-Min Avg PM10 Conc (mg/m ³)	Max 15-Min PM10 Conc (mg/m ³)	Time of Max 15-Min Avg
0.005	0.020	7:41
0.030	0.146	11:34
0.010	0.026	15:48
0.001	0.003	6:15

"--" indicates no data or NA



DEBRIS TRANSPORT AIR MONITORING

MAUI TDS(OLOWALU) TO PDS(CENTRAL)

June 20, 2025

Prepared for
United States Army Corps of Engineers



Prepared by:



**ECC Constructors LLC
700 Airport Blvd., Suite 250
Burlingame, CA 94010
Tel: 650.347.1555
Fax: 650.347.8789
Corporate@ecc.net**



Debris Transfer Air monitoring: June 20, 2025

Maui TDS (Olowalu) to PDS (Central) Air Monitoring

Summary:

The Air Monitoring and Surveillance Plan includes the use of real-time particulate monitors located in areas around the active debris removal operations. The AMSP has established Daily Project Limits of 70 ug/m³ for particulates in the PM 2.5 size range and 300 ug/m³ for particulates in the PM 10 size range as Daily Average concentrations. The Plan also establishes Operational Control Action Levels at one-half the Project Limit levels to help ensure effectiveness of operational controls.

The data collected by real-time dust monitors is uploaded via cellular telemetry to a cloud-based data management system. In addition to storing the data, the system allows for communications on a real-time basis by text and email, as well as integration and analysis of the data.

The AMSP has established an alert system with criteria so that operational controls can be investigated and, if necessary, adjusted throughout the day so that the particle concentrations remain below the Project Limit. If any 15-minute block average hits an Operational Alert level, the Air Monitoring Team receives an immediate alert which triggers an investigation. If necessary, operational controls can then be immediately adjusted to preclude a Project Limit exceedance.

Debris transfer continued today.

Weather:

		TDS	Haul Road
Precipitation		No precipitation observed all day. Overnight chance of precipitation is 10%.	No precipitation observed all day. Overnight chance of precipitation is 10%.
Wind Direction		WNW	NNE
Wind Speed	Average	7 mph	15 mph
	Range	5-16 mph	9-24 mph

Station Location Summary:

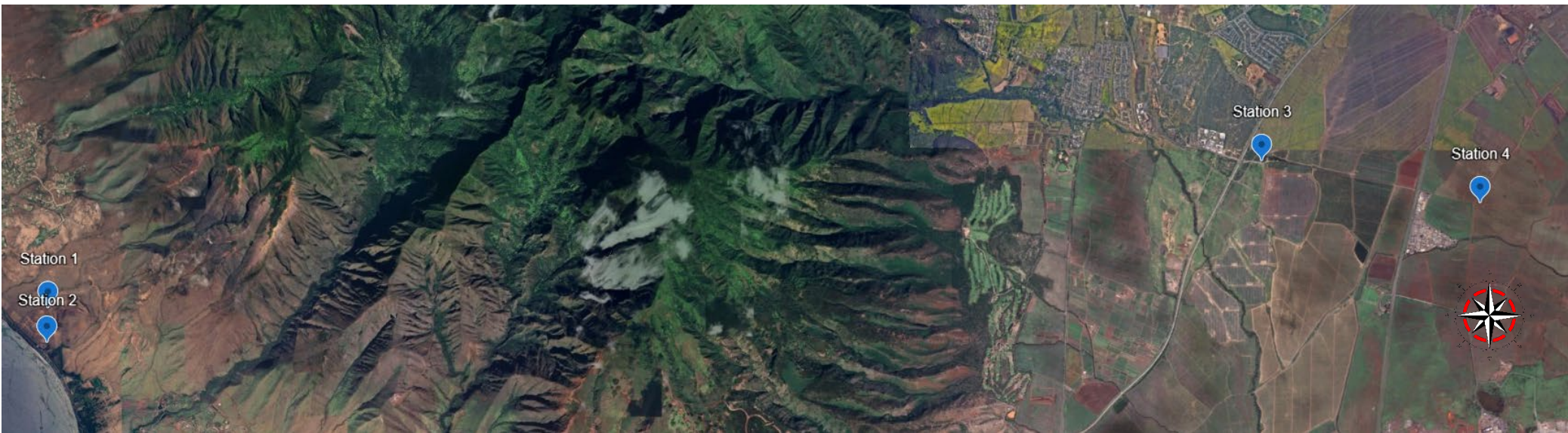
Maui Station 1 and Maui Station 2 were set up at the perimeter of the current TDS. Maui station 3 and Station 4 were set up on Haul Road.

Station Data:

No stations exceeded the Project limit or the Action Level for the day.

		Maui Station 1	Maui Station 2	Maui Station 3	Maui Station 4	Project Limit	Action Level
PM 2.5	Avg, ug/M ³	3	6	5	1	70	35
PM 10	Avg, ug/M ³	6	37	9	2	300	150

Monitoring Station Map:





DAILY AIR MONITORING REPORT

Real-Time Particulates
Maui TDS (Olowalu) to PDS (Central) Air Monitoring
6/20/2025



PM2.5 Particulate Summary

Station ID/Location	Daily Average PM2.5 Conc (mg/m ³)	Max PM2.5 Conc (mg/m ³)	Time of Max
Station 1 (TDS)	0.003	0.057	6:29
Station 2 (TDS)	0.006	0.051	7:15
Station 3 (Haul Road)	0.005	0.021	7:23
Station 4 (Haul Road)	0.001	0.028	8:51

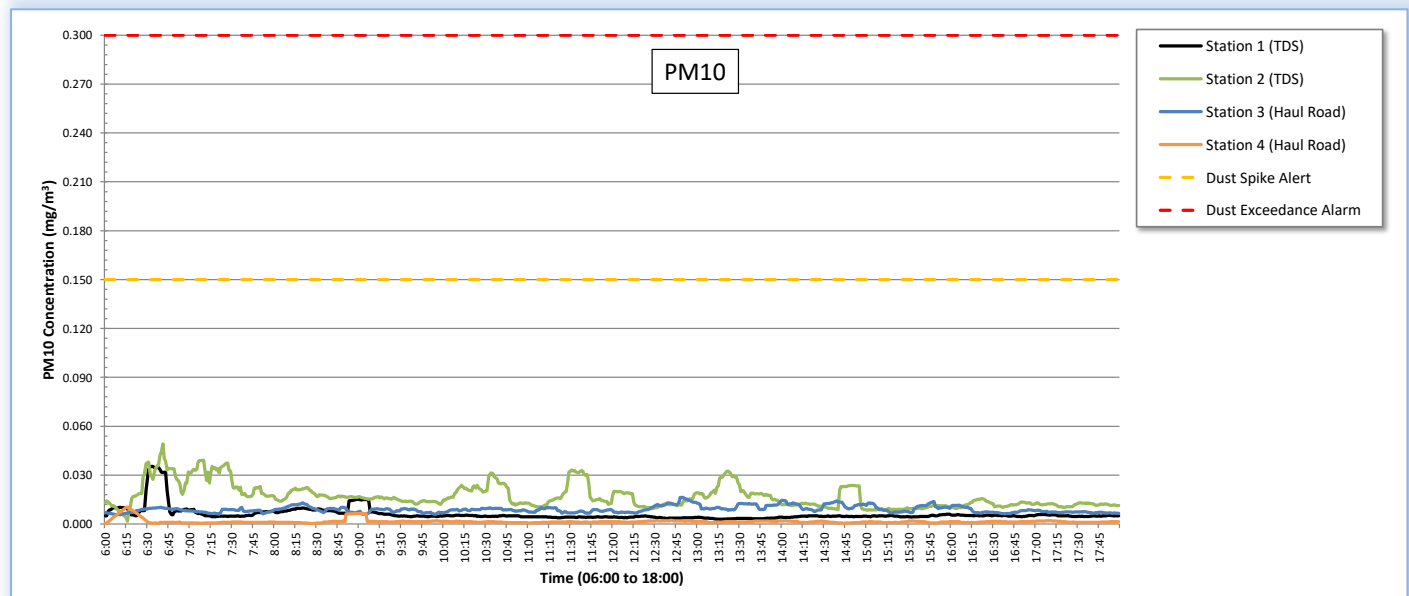
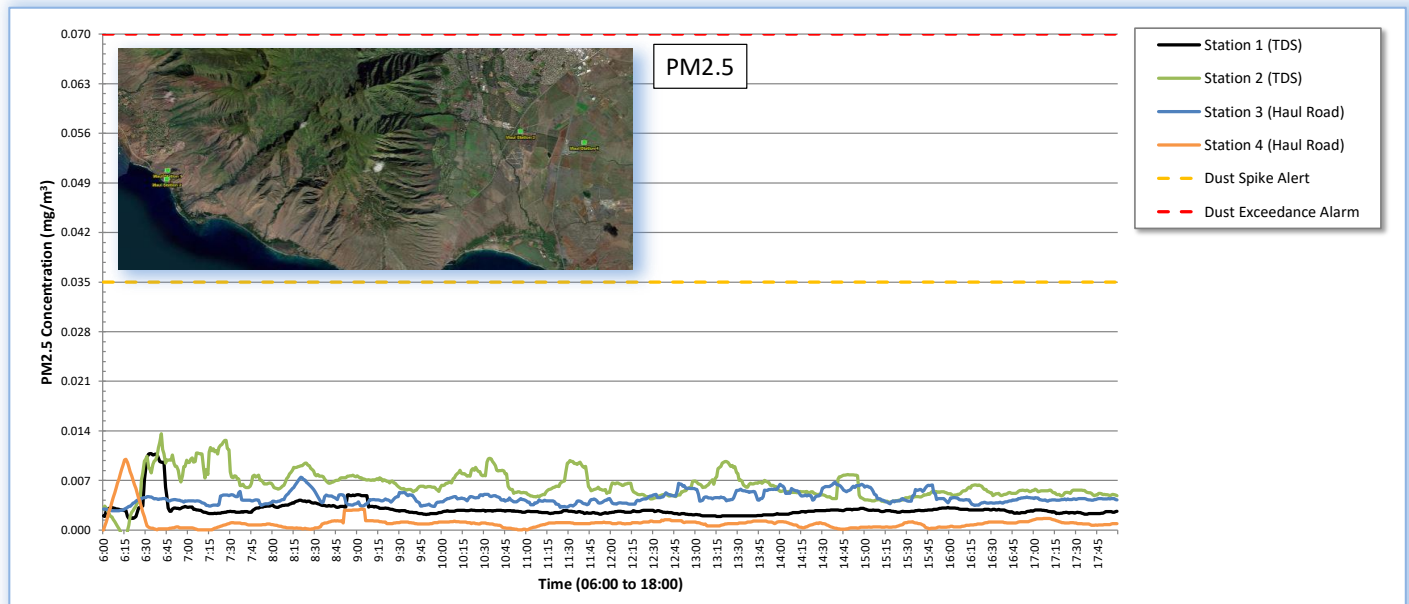
15-Min Avg PM2.5 Conc (mg/m ³)	Max 15-Min PM2.5 Conc (mg/m ³)	Time of Max 15-Min Avg
0.003	0.011	6:33
0.006	0.014	6:41
0.005	0.007	8:20
0.001	0.010	6:16

PM10 Particulate Summary

Station ID/Location	Daily Average PM10 Conc (mg/m ³)	Max PM10 Conc (mg/m ³)	Time of Max
Station 1 (TDS)	0.006	0.191	6:29
Station 2 (TDS)	0.037	0.191	14:41
Station 3 (Haul Road)	0.009	0.053	15:34
Station 4 (Haul Road)	0.002	0.075	8:51

15-Min Avg PM10 Conc (mg/m ³)	Max 15-Min PM10 Conc (mg/m ³)	Time of Max 15-Min Avg
0.006	0.035	6:33
0.017	0.049	6:41
0.009	0.016	12:48
0.002	0.010	6:16

"--" indicates no data or NA



DEBRIS TRANSPORT AIR MONITORING

MAUI TDS(OLOWALU) TO PDS(CENTRAL)

June 21, 2025

Prepared for
United States Army Corps of Engineers



Prepared by:



**ECC Constructors LLC
700 Airport Blvd., Suite 250
Burlingame, CA 94010
Tel: 650.347.1555
Fax: 650.347.8789
Corporate@ecc.net**



Debris Transfer Air monitoring: June 21, 2025

Maui TDS (Olowalu) to PDS (Central) Air Monitoring

Summary:

The Air Monitoring and Surveillance Plan includes the use of real-time particulate monitors located in areas around the active debris removal operations. The AMSP has established Daily Project Limits of 70 ug/m³ for particulates in the PM 2.5 size range and 300 ug/m³ for particulates in the PM 10 size range as Daily Average concentrations. The Plan also establishes Operational Control Action Levels at one-half the Project Limit levels to help ensure effectiveness of operational controls.

The data collected by real-time dust monitors is uploaded via cellular telemetry to a cloud-based data management system. In addition to storing the data, the system allows for communications on a real-time basis by text and email, as well as integration and analysis of the data.

The AMSP has established an alert system with criteria so that operational controls can be investigated and, if necessary, adjusted throughout the day so that the particle concentrations remain below the Project Limit. If any 15-minute block average hits an Operational Alert level, the Air Monitoring Team receives an immediate alert which triggers an investigation. If necessary, operational controls can then be immediately adjusted to preclude a Project Limit exceedance.

Debris transfer continued today.

Weather:

		TDS	Haul Road
Precipitation		No precipitation observed all day. Overnight chance of precipitation is 10%.	No precipitation observed all day. Overnight chance of precipitation is 10%.
Wind Direction		ENE	NE
Wind Speed	Average	7 mph	13 mph
	Range	6-18 mph	12-25 mph

Station Location Summary:

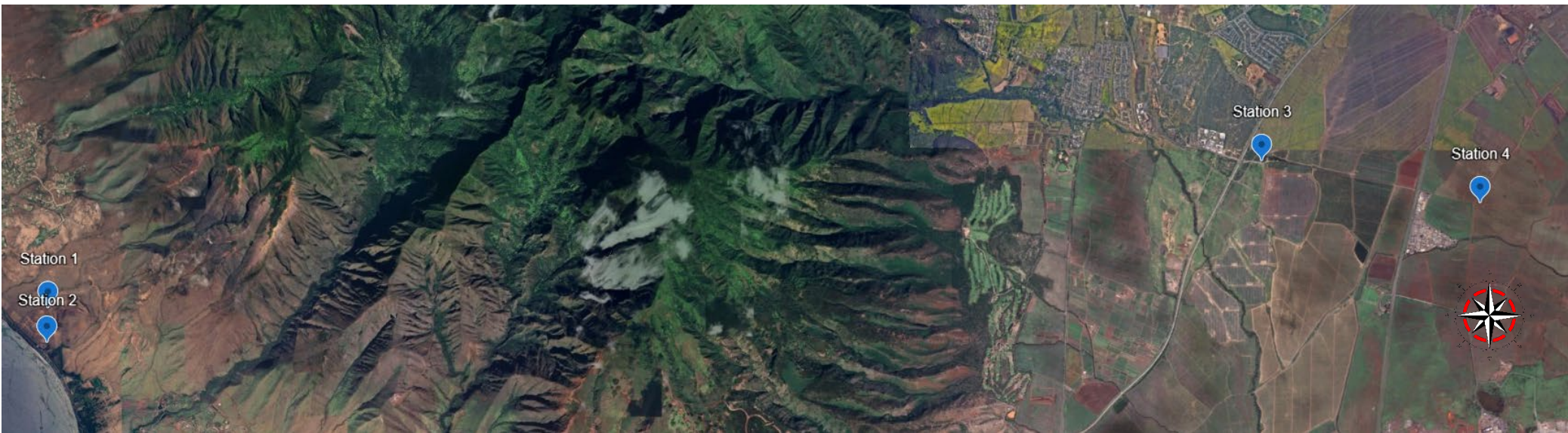
Maui Station 1 and Maui Station 2 were set up at the perimeter of the current TDS. Maui station 3 and Station 4 were set up on Haul Road.

Station Data:

No stations exceeded the Project limit or the Action Level for the day.

		Maui Station 1	Maui Station 2	Maui Station 3	Maui Station 4	Project Limit	Action Level
PM 2.5	Avg, ug/M ³	7	11	10	4	70	35
PM 10	Avg, ug/M ³	11	41	17	5	300	150

Monitoring Station Map:





DAILY AIR MONITORING REPORT

Real-Time Particulates
Maui TDS (Olowalu) to PDS (Central) Air Monitoring
6/21/2025



PM2.5 Particulate Summary

Station ID/Location	Daily Average PM2.5 Conc (mg/m ³)	Max PM2.5 Conc (mg/m ³)	Time of Max
Station 1 (TDS)	0.007	0.087	6:53
Station 2 (TDS)	0.011	0.057	8:43
Station 3 (Haul Road)	0.010	0.085	9:27
Station 4 (Haul Road)	0.004	0.028	11:29

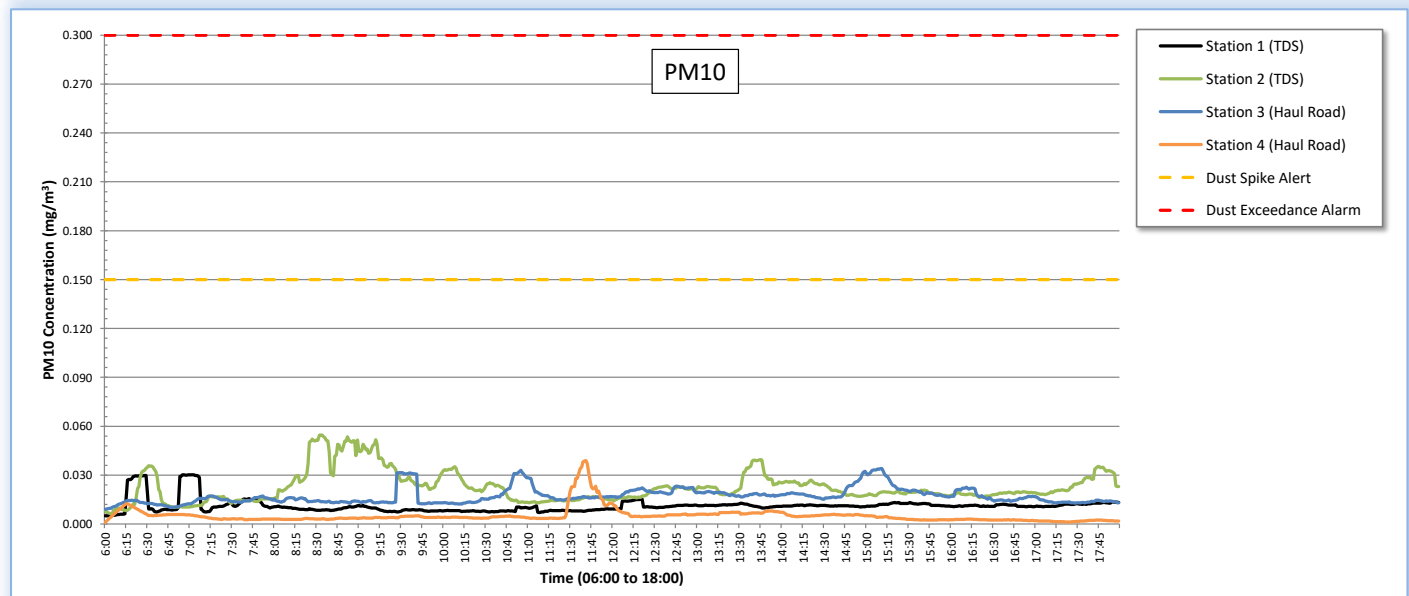
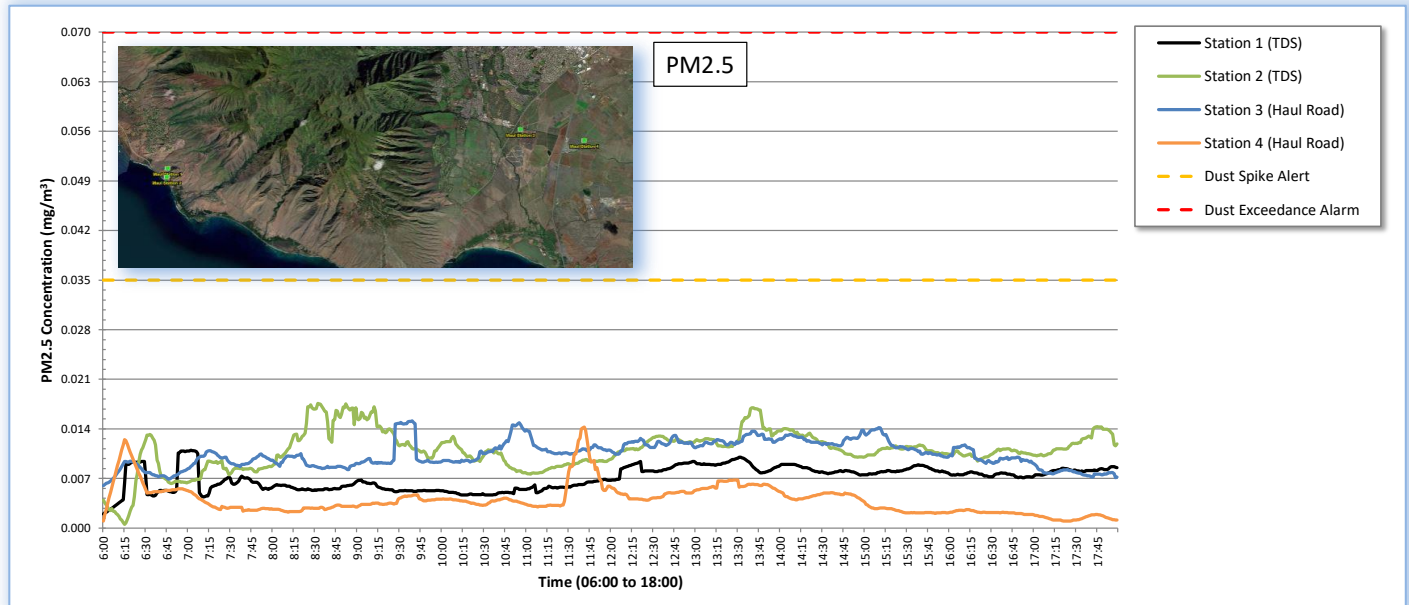
15-Min Avg PM2.5 Conc (mg/m ³)	Max 15-Min PM2.5 Conc (mg/m ³)	Time of Max 15-Min Avg
0.007	0.011	7:02
0.011	0.018	8:32
0.010	0.015	9:39
0.004	0.014	11:41

PM10 Particulate Summary

Station ID/Location	Daily Average PM10 Conc (mg/m ³)	Max PM10 Conc (mg/m ³)	Time of Max
Station 1 (TDS)	0.011	0.302	6:53
Station 2 (TDS)	0.041	0.221	8:25
Station 3 (Haul Road)	0.017	0.281	9:27
Station 4 (Haul Road)	0.005	0.092	11:29

15-Min Avg PM10 Conc (mg/m ³)	Max 15-Min PM10 Conc (mg/m ³)	Time of Max 15-Min Avg
0.011	0.030	7:02
0.022	0.055	8:34
0.017	0.034	15:11
0.005	0.039	11:41

"--" indicates no data or NA



DEBRIS TRANSPORT AIR MONITORING

MAUI TDS(OLOWALU) TO PDS(CENTRAL)

June 22, 2025

Prepared for
United States Army Corps of Engineers



Prepared by:



**ECC Constructors LLC
700 Airport Blvd., Suite 250
Burlingame, CA 94010
Tel: 650.347.1555
Fax: 650.347.8789
Corporate@ecc.net**



Debris Transfer Air monitoring: June 22, 2025

Maui TDS (Olowalu) to PDS (Central) Air Monitoring

Summary:

The Air Monitoring and Surveillance Plan includes the use of real-time particulate monitors located in areas around the active debris removal operations. The AMSP has established Daily Project Limits of 70 ug/m³ for particulates in the PM 2.5 size range and 300 ug/m³ for particulates in the PM 10 size range as Daily Average concentrations. The Plan also establishes Operational Control Action Levels at one-half the Project Limit levels to help ensure effectiveness of operational controls.

The data collected by real-time dust monitors is uploaded via cellular telemetry to a cloud-based data management system. In addition to storing the data, the system allows for communications on a real-time basis by text and email, as well as integration and analysis of the data.

The AMSP has established an alert system with criteria so that operational controls can be investigated and, if necessary, adjusted throughout the day so that the particle concentrations remain below the Project Limit. If any 15-minute block average hits an Operational Alert level, the Air Monitoring Team receives an immediate alert which triggers an investigation. If necessary, operational controls can then be immediately adjusted to preclude a Project Limit exceedance.

Debris transfer continued today.

Weather:

		TDS	Haul Road
Precipitation		No precipitation observed all day. Overnight chance of precipitation is 20%, <1/2" possible.	No precipitation observed all day. Overnight chance of precipitation is 10%.
Wind Direction		NNW	NE
Wind Speed	Average	11 mph	25 mph
	Range	7-18 mph	15-50 mph

Station Location Summary:

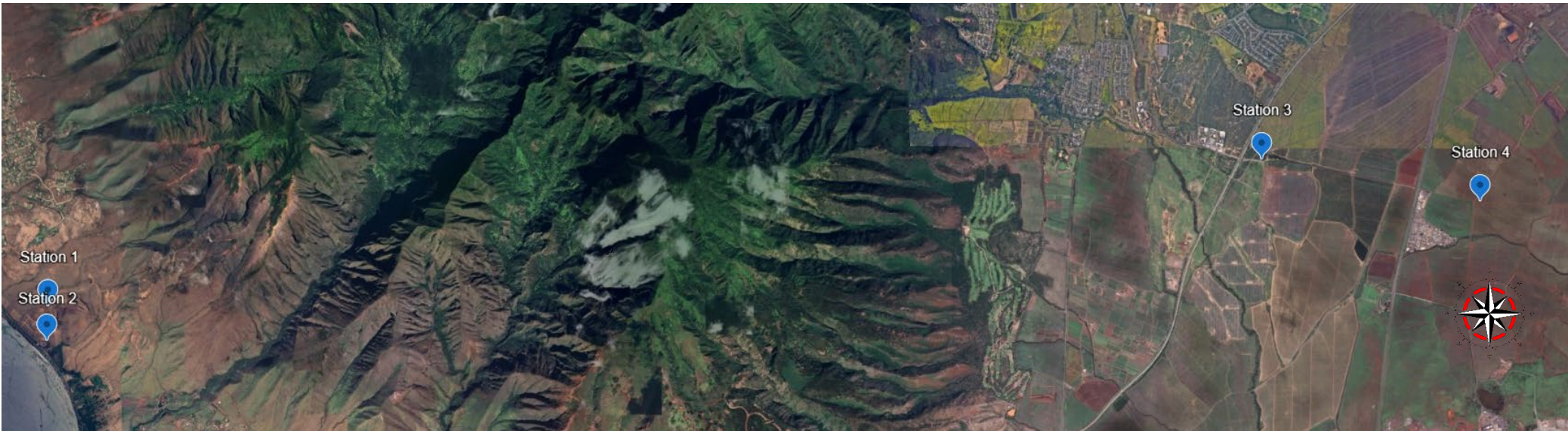
Maui Station 1 and Maui Station 2 were set up at the perimeter of the current TDS. Maui station 3 and Station 4 were set up on Haul Road.

Station Data:

No stations exceeded the Project limit or the Action Level for the day.

		Maui Station 1	Maui Station 2	Maui Station 3	Maui Station 4	Project Limit	Action Level
PM 2.5	Avg, ug/M ³	6	10	13	2	70	35
PM 10	Avg, ug/M ³	10	42	30	4	300	150

Monitoring Station Map:





DAILY AIR MONITORING REPORT

Real-Time Particulates
Maui TDS (Olowalu) to PDS (Central) Air Monitoring
6/22/2025



PM2.5 Particulate Summary

Station ID/Location	Daily Average PM2.5 Conc (mg/m ³)	Max PM2.5 Conc (mg/m ³)	Time of Max
Station 1 (TDS)	0.006	0.049	17:56
Station 2 (TDS)	0.010	0.050	17:20
Station 3 (Haul Road)	0.013	0.293	7:03
Station 4 (Haul Road)	0.002	0.018	15:32

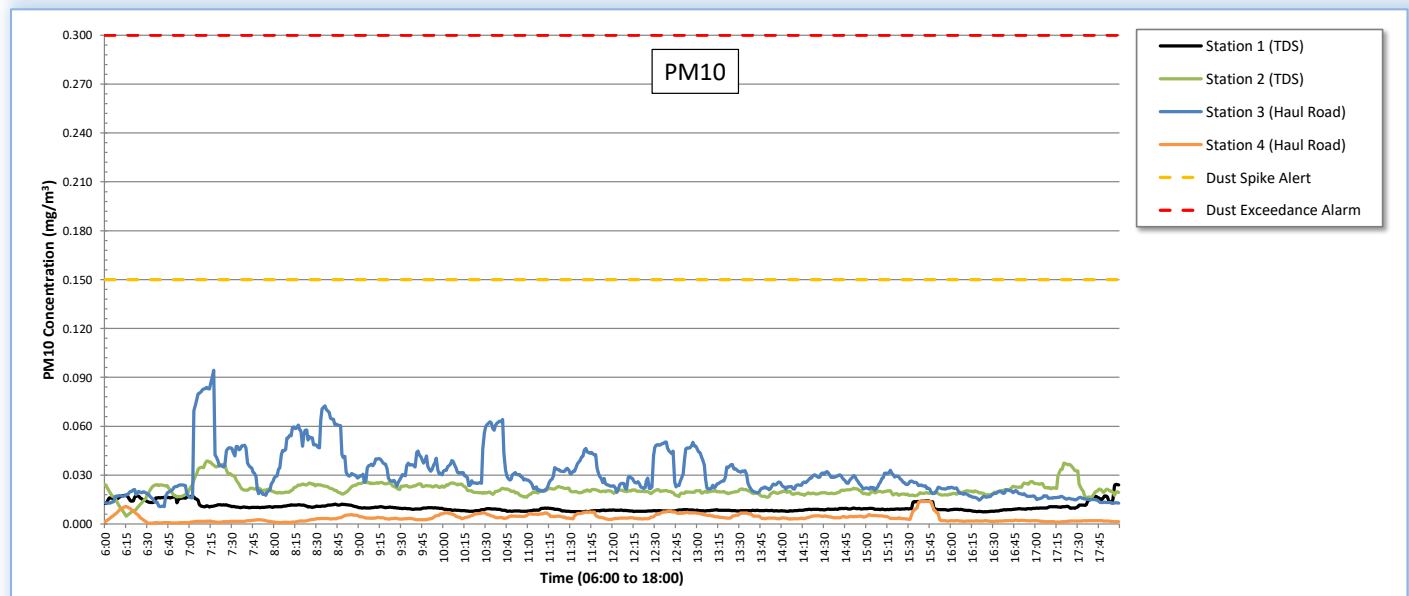
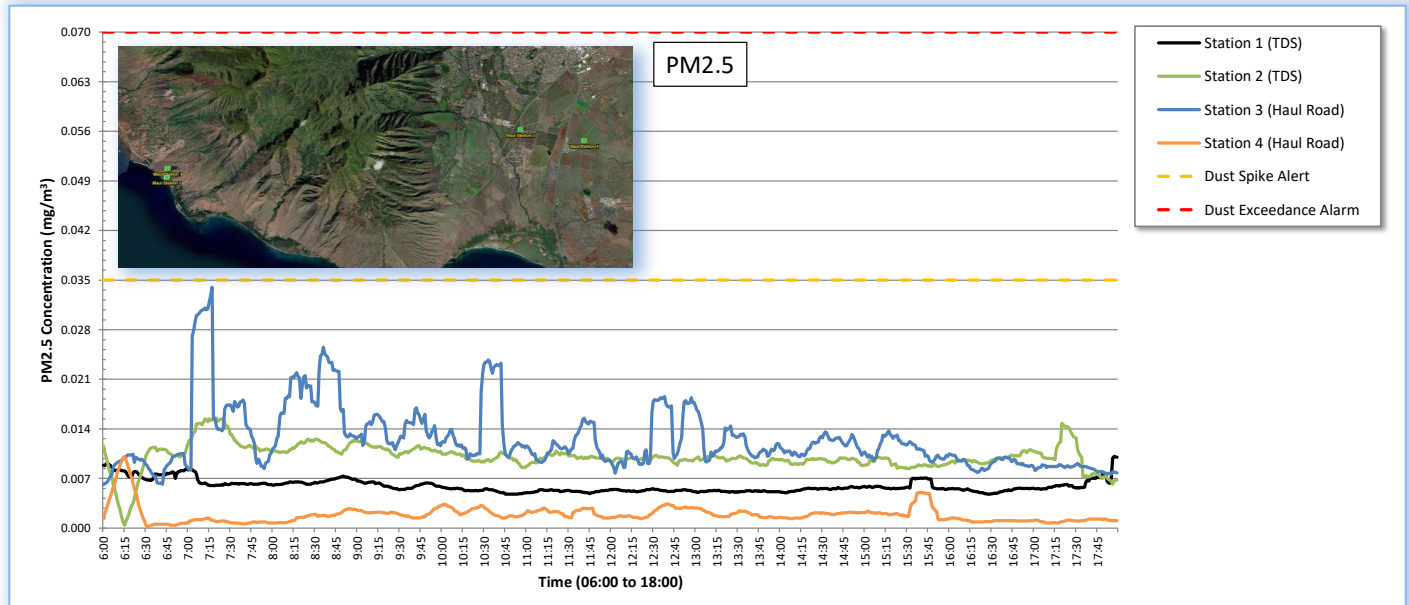
15-Min Avg PM2.5 Conc (mg/m ³)	Max 15-Min PM2.5 Conc (mg/m ³)	Time of Max 15-Min Avg
0.006	0.010	17:57
0.010	0.016	7:20
0.013	0.034	7:17
0.002	0.010	6:15

PM10 Particulate Summary

Station ID/Location	Daily Average PM10 Conc (mg/m ³)	Max PM10 Conc (mg/m ³)	Time of Max
Station 1 (TDS)	0.010	0.149	17:56
Station 2 (TDS)	0.042	0.140	17:16
Station 3 (Haul Road)	0.030	0.827	7:03
Station 4 (Haul Road)	0.004	0.056	15:37

15-Min Avg PM10 Conc (mg/m ³)	Max 15-Min PM10 Conc (mg/m ³)	Time of Max 15-Min Avg
0.010	0.024	17:57
0.021	0.039	7:13
0.030	0.094	7:17
0.004	0.014	15:42

"--" indicates no data or NA



DEBRIS TRANSPORT AIR MONITORING

MAUI TDS(OLOWALU) TO PDS(CENTRAL)

June 23, 2025

Prepared for
United States Army Corps of Engineers



Prepared by:



**ECC Constructors LLC
700 Airport Blvd., Suite 250
Burlingame, CA 94010
Tel: 650.347.1555
Fax: 650.347.8789
Corporate@ecc.net**



Debris Transfer Air monitoring: June 23, 2025

Maui TDS (Olowalu) to PDS (Central) Air Monitoring

Summary:

The Air Monitoring and Surveillance Plan includes the use of real-time particulate monitors located in areas around the active debris removal operations. The AMSP has established Daily Project Limits of 70 ug/m³ for particulates in the PM 2.5 size range and 300 ug/m³ for particulates in the PM 10 size range as Daily Average concentrations. The Plan also establishes Operational Control Action Levels at one-half the Project Limit levels to help ensure effectiveness of operational controls.

The data collected by real-time dust monitors is uploaded via cellular telemetry to a cloud-based data management system. In addition to storing the data, the system allows for communications on a real-time basis by text and email, as well as integration and analysis of the data.

The AMSP has established an alert system with criteria so that operational controls can be investigated and, if necessary, adjusted throughout the day so that the particle concentrations remain below the Project Limit. If any 15-minute block average hits an Operational Alert level, the Air Monitoring Team receives an immediate alert which triggers an investigation. If necessary, operational controls can then be immediately adjusted to preclude a Project Limit exceedance.

Debris transfer continued today.

Weather:

		TDS	Haul Road
Precipitation		Light showers occurred in the early morning at TDS. No rain observed in the afternoon or evening. Overnight chance of precipitation is <10%.	No precipitation observed all day. Overnight chance of precipitation is 10%. Skies mostly cloudy.
Wind Direction		NE	NE
Wind Speed	Average	11 mph	22 mph
	Range	9-23 mph	15-32 mph

Station Location Summary:

Maui Station 1 and Maui Station 2 were set up at the perimeter of the current TDS. Maui station 3 and Station 4 were set up on Haul Road.

Station Data:

No stations exceeded the Project limit or the Action Level for the day.

		Maui Station 1	Maui Station 2	Maui Station 3	Maui Station 4	Project Limit	Action Level
PM 2.5	Avg, ug/M ³	3	5	7	1	70	35
PM 10	Avg, ug/M ³	7	38	14	2	300	150

Monitoring Station Map:





DAILY AIR MONITORING REPORT

Real-Time Particulates
Maui TDS (Olowalu) to PDS (Central) Air Monitoring
6/23/2025



PM2.5 Particulate Summary

Station ID/Location	Daily Average PM2.5 Conc (mg/m ³)	Max PM2.5 Conc (mg/m ³)	Time of Max
Station 1 (TDS)	0.003	0.055	9:41
Station 2 (TDS)	0.005	0.033	13:36
Station 3 (Haul Road)	0.007	0.038	13:05
Station 4 (Haul Road)	0.001	0.062	8:38

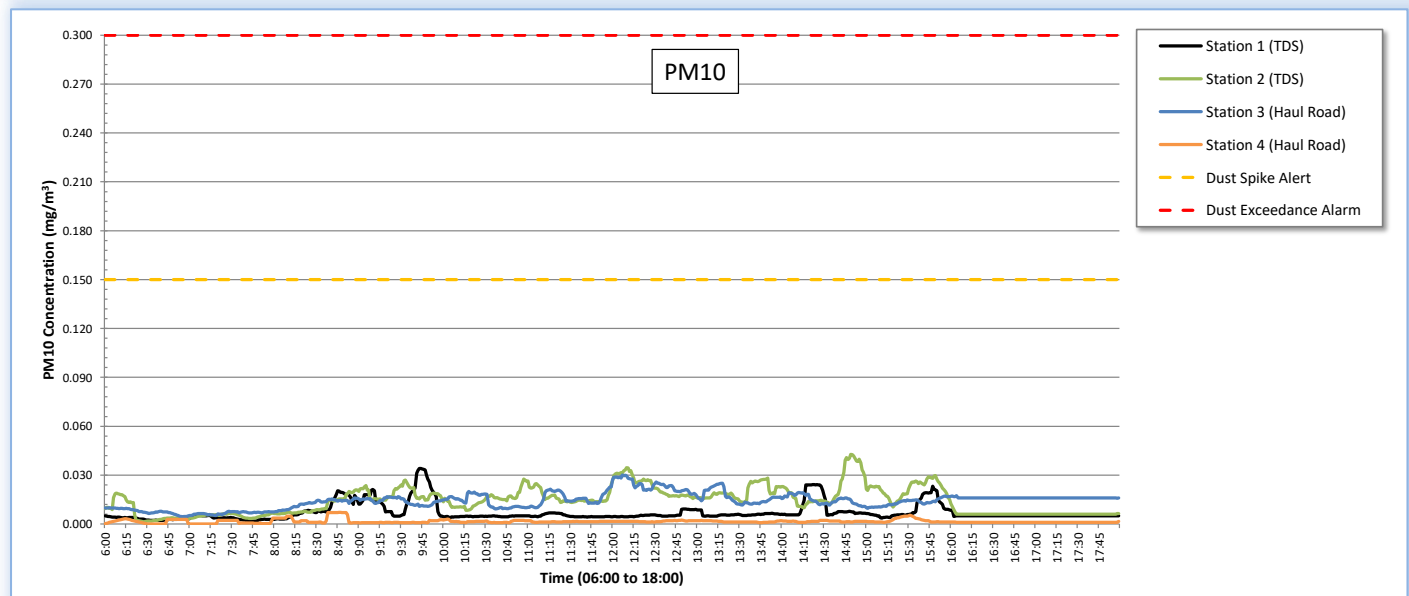
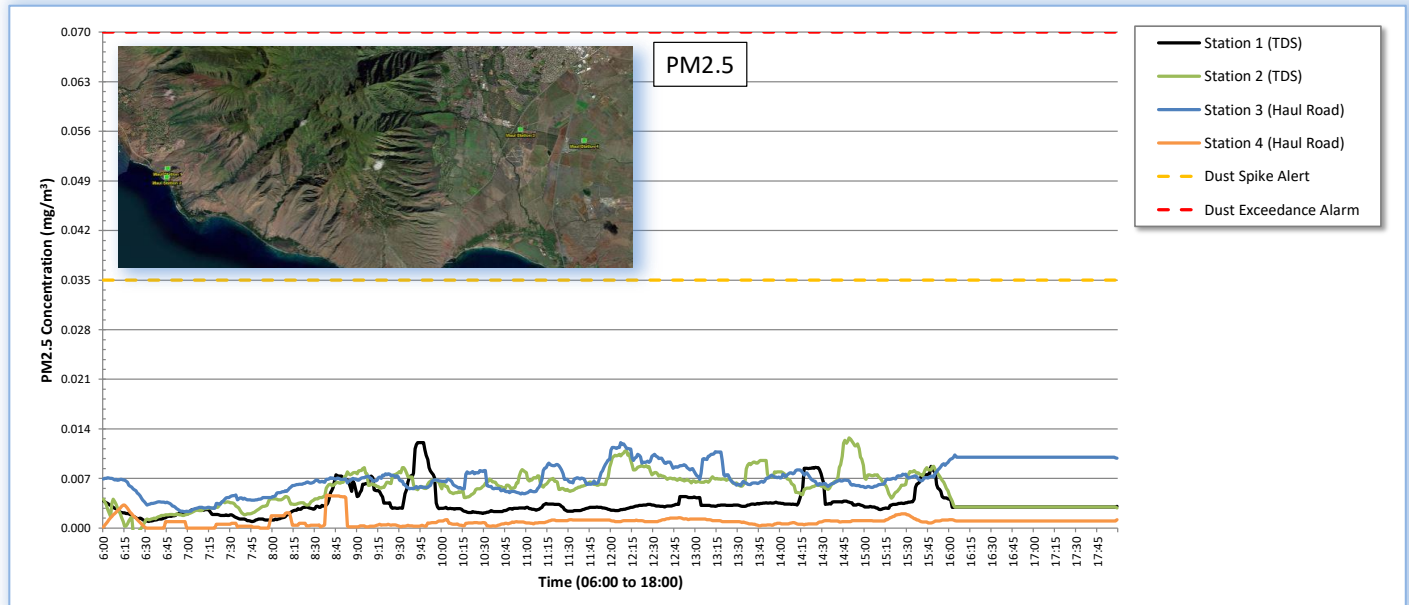
15-Min Avg PM2.5 Conc (mg/m ³)	Max 15-Min PM2.5 Conc (mg/m ³)	Time of Max 15-Min Avg
0.003	0.012	9:43
0.005	0.013	14:49
0.007	0.012	12:07
0.001	0.005	8:39

PM10 Particulate Summary

Station ID/Location	Daily Average PM10 Conc (mg/m ³)	Max PM10 Conc (mg/m ³)	Time of Max
Station 1 (TDS)	0.007	0.149	14:17
Station 2 (TDS)	0.038	0.122	13:36
Station 3 (Haul Road)	0.014	0.106	10:17
Station 4 (Haul Road)	0.002	0.077	8:38

15-Min Avg PM10 Conc (mg/m ³)	Max 15-Min PM10 Conc (mg/m ³)	Time of Max 15-Min Avg
0.007	0.034	9:43
0.014	0.043	14:49
0.014	0.030	12:07
0.002	0.007	8:46

"--" indicates no data or NA

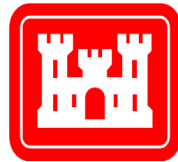


DEBRIS TRANSPORT AIR MONITORING

MAUI TDS(OLOWALU) TO PDS(CENTRAL)

June 24, 2025

Prepared for
United States Army Corps of Engineers



Prepared by:



**ECC Constructors LLC
700 Airport Blvd., Suite 250
Burlingame, CA 94010
Tel: 650.347.1555
Fax: 650.347.8789
Corporate@ecc.net**



Debris Transfer Air monitoring: June 24, 2025

Maui TDS (Olowalu) to PDS (Central) Air Monitoring

Summary:

The Air Monitoring and Surveillance Plan includes the use of real-time particulate monitors located in areas around the active debris removal operations. The AMSP has established Daily Project Limits of 70 ug/m³ for particulates in the PM 2.5 size range and 300 ug/m³ for particulates in the PM 10 size range as Daily Average concentrations. The Plan also establishes Operational Control Action Levels at one-half the Project Limit levels to help ensure effectiveness of operational controls.

The data collected by real-time dust monitors is uploaded via cellular telemetry to a cloud-based data management system. In addition to storing the data, the system allows for communications on a real-time basis by text and email, as well as integration and analysis of the data.

The AMSP has established an alert system with criteria so that operational controls can be investigated and, if necessary, adjusted throughout the day so that the particle concentrations remain below the Project Limit. If any 15-minute block average hits an Operational Alert level, the Air Monitoring Team receives an immediate alert which triggers an investigation. If necessary, operational controls can then be immediately adjusted to preclude a Project Limit exceedance.

Debris transfer continued today.

Weather:

		TDS	Haul Road
Precipitation		Overcast conditions. No precipitation observed all day. Overnight chance of precipitation is <10%.	Overcast conditions. No precipitation observed all day. Overnight chance of precipitation is <10%.
Wind Direction		WNW Shifting to SW	NNE
Wind Speed	Average	6 mph	19-21 mph
	Range	6-19 mph	14-34 mph

Station Location Summary:

Maui Station 1 and Maui Station 2 were set up at the perimeter of the current TDS. Maui station 3 and Station 4 were set up on Haul Road.

Station Data:

No stations exceeded the Project limit or the Action Level for the day.

		Maui Station 1	Maui Station 2	Maui Station 3	Maui Station 4	Project Limit	Action Level
PM 2.5	Avg, ug/M ³	4	8	6	0	70	35
PM 10	Avg, ug/M ³	11	39	14	1	300	150

Monitoring Station Map:





DAILY AIR MONITORING REPORT

Real-Time Particulates
Maui TDS (Olowalu) to PDS (Central) Air Monitoring
6/24/2025



PM2.5 Particulate Summary

Station ID/Location	Daily Average PM2.5 Conc (mg/m ³)	Max PM2.5 Conc (mg/m ³)	Time of Max
Station 1 (TDS)	0.004	0.281	6:53
Station 2 (TDS)	0.008	0.045	9:14
Station 3 (Haul Road)	0.006	0.065	13:49
Station 4 (Haul Road)	0.000	0.008	6:01

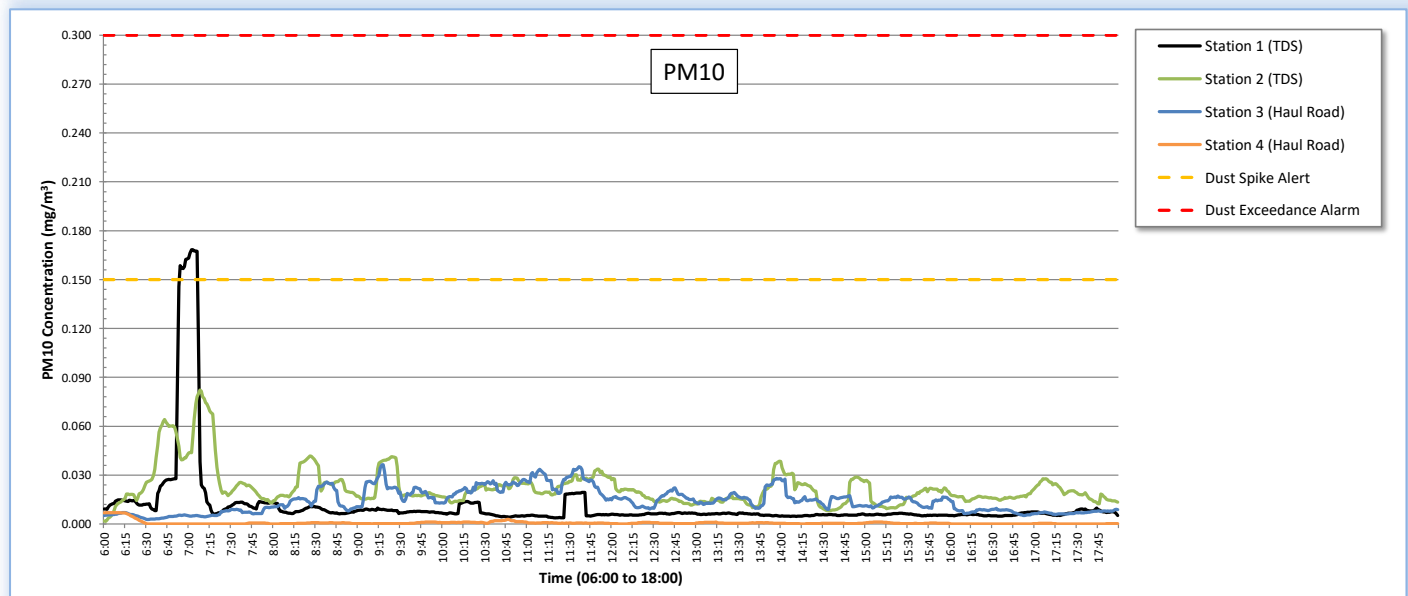
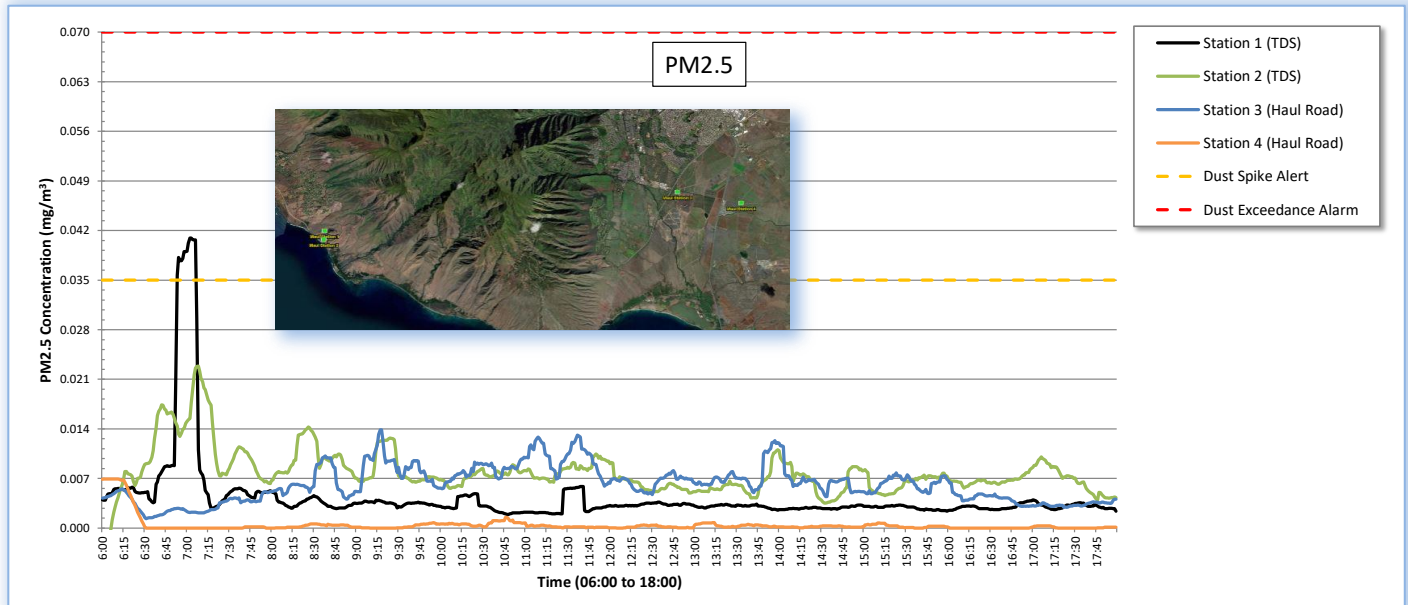
15-Min Avg PM2.5 Conc (mg/m ³)	Max 15-Min PM2.5 Conc (mg/m ³)	Time of Max 15-Min Avg
0.004	0.041	7:03
0.008	0.023	7:08
0.006	0.014	9:17
0.000	0.007	6:01

PM10 Particulate Summary

Station ID/Location	Daily Average PM10 Conc (mg/m ³)	Max PM10 Conc (mg/m ³)	Time of Max
Station 1 (TDS)	0.011	1.161	6:53
Station 2 (TDS)	0.039	0.201	9:14
Station 3 (Haul Road)	0.014	0.167	13:49
Station 4 (Haul Road)	0.001	0.010	10:34

15-Min Avg PM10 Conc (mg/m ³)	Max 15-Min PM10 Conc (mg/m ³)	Time of Max 15-Min Avg
0.011	0.168	7:02
0.022	0.082	7:08
0.014	0.036	9:17
0.001	0.007	6:01

"--" indicates no data or NA



DEBRIS TRANSPORT AIR MONITORING

MAUI TDS(OLOWALU) TO PDS(CENTRAL)

June 25, 2025

Prepared for
United States Army Corps of Engineers



Prepared by:



**ECC Constructors LLC
700 Airport Blvd., Suite 250
Burlingame, CA 94010
Tel: 650.347.1555
Fax: 650.347.8789
Corporate@ecc.net**



Debris Transfer Air monitoring: June 25, 2025

Maui TDS (Olowalu) to PDS (Central) Air Monitoring

Summary:

The Air Monitoring and Surveillance Plan includes the use of real-time particulate monitors located in areas around the active debris removal operations. The AMSP has established Daily Project Limits of 70 ug/m³ for particulates in the PM 2.5 size range and 300 ug/m³ for particulates in the PM 10 size range as Daily Average concentrations. The Plan also establishes Operational Control Action Levels at one-half the Project Limit levels to help ensure effectiveness of operational controls.

The data collected by real-time dust monitors is uploaded via cellular telemetry to a cloud-based data management system. In addition to storing the data, the system allows for communications on a real-time basis by text and email, as well as integration and analysis of the data.

The AMSP has established an alert system with criteria so that operational controls can be investigated and, if necessary, adjusted throughout the day so that the particle concentrations remain below the Project Limit. If any 15-minute block average hits an Operational Alert level, the Air Monitoring Team receives an immediate alert which triggers an investigation. If necessary, operational controls can then be immediately adjusted to preclude a Project Limit exceedance.

Debris transfer continued today.

Weather:

		TDS	Haul Road
Precipitation		Overcast conditions and light scattered showers occurred early morning. Overnight chance of precipitation is 20%. Less than half an inch of rain possible accompanying expected isolated moderate rain showers overnight.	Overcast conditions – skies mostly cloudy. No precipitation observed all day. Overnight chance of precipitation is 10% with predicted isolated moderate rain showers.
Wind Direction		N	NE
Wind Speed	Average	13 mph	19-24 mph
	Range	7-21 mph	13-37 mph
Air Quality Index		19	17

Station Location Summary:

Maui Station 1 and Maui Station 2 were set up at the perimeter of the current TDS. Maui station 3 and Station 4 were set up on Haul Road.

Station Data:

No stations exceeded the Project limit or the Action Level for the day.

		Maui Station 1	Maui Station 2	Maui Station 3	Maui Station 4	Project Limit	Action Level
PM 2.5	Avg, ug/M ³	3	5	7	0	70	35
PM 10	Avg, ug/M ³	8	38	17	0	300	150

Monitoring Station Map:



DEBRIS TRANSPORT AIR MONITORING

MAUI TDS(OLOWALU) TO PDS(CENTRAL)

June 26, 2025

Prepared for
United States Army Corps of Engineers



Prepared by:



**ECC Constructors LLC
700 Airport Blvd., Suite 250
Burlingame, CA 94010
Tel: 650.347.1555
Fax: 650.347.8789
Corporate@ecc.net**



Debris Transfer Air monitoring: June 26, 2025

Maui TDS (Olowalu) to PDS (Central) Air Monitoring

Summary:

The Air Monitoring and Surveillance Plan includes the use of real-time particulate monitors located in areas around the active debris removal operations. The AMSP has established Daily Project Limits of 70 ug/m³ for particulates in the PM 2.5 size range and 300 ug/m³ for particulates in the PM 10 size range as Daily Average concentrations. The Plan also establishes Operational Control Action Levels at one-half the Project Limit levels to help ensure effectiveness of operational controls.

The data collected by real-time dust monitors is uploaded via cellular telemetry to a cloud-based data management system. In addition to storing the data, the system allows for communications on a real-time basis by text and email, as well as integration and analysis of the data.

The AMSP has established an alert system with criteria so that operational controls can be investigated and, if necessary, adjusted throughout the day so that the particle concentrations remain below the Project Limit. If any 15-minute block average hits an Operational Alert level, the Air Monitoring Team receives an immediate alert which triggers an investigation. If necessary, operational controls can then be immediately adjusted to preclude a Project Limit exceedance.

Debris transfer continued today.

Weather:

		TDS	Haul Road
Precipitation		No precipitation observed all day. Overnight chance of precipitation is <10%	No precipitation observed all day. Overnight chance of precipitation is 10%
Wind Direction		NW	N
Wind Speed	Average	10 mph	18mph
	Range	7-18 mph	11-27 mph
Air Quality Index		29	28

Station Location Summary:

Maui Station 1 and Maui Station 2 were set up at the perimeter of the current TDS. Maui station 3 and Station 4 were set up on Haul Road.

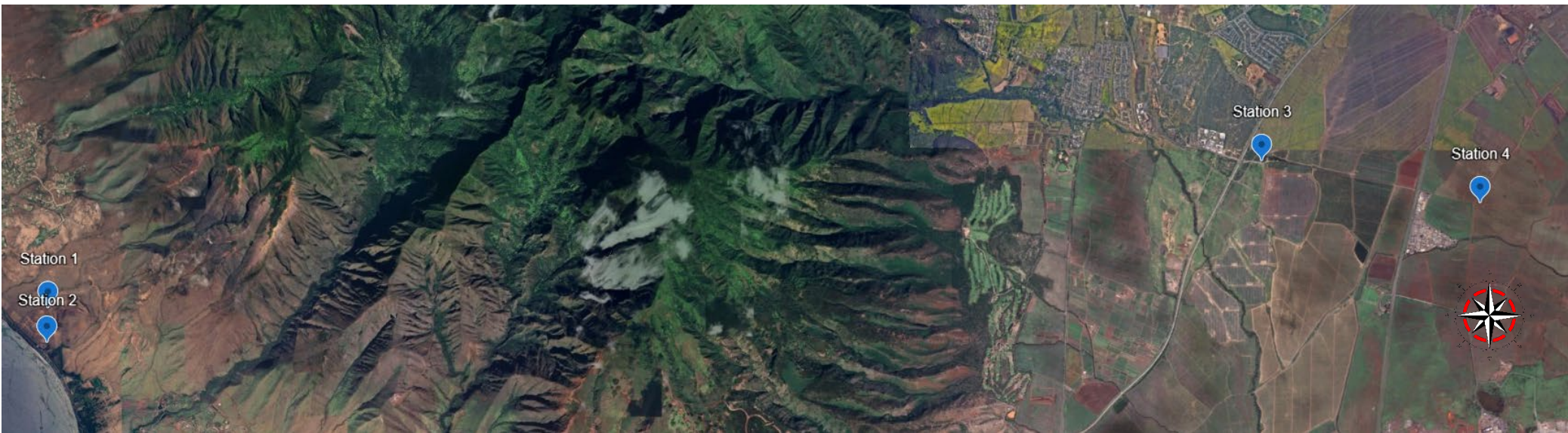
Station Data:

No stations exceeded the Project limit or the Action Level for the day.

Notification at station two from 0618 to 0633 was investigated by the AMT. This PM2.5 spike (0.036 mg/m³, 15-minute rolling average) was likely due to organic material dust kicked up in the air from public use of the Olowalu recycling and refuse center at the bottom of TDS.

		Maui Station 1	Maui Station 2	Maui Station 3	Maui Station 4	Project Limit	Action Level
PM 2.5	Avg, ug/M ³	2	7	4	0	70	35
PM 10	Avg, ug/M ³	5	38	9	0	300	150

Monitoring Station Map:





DAILY AIR MONITORING REPORT

Real-Time Particulates
Maui TDS (Olowalu) to PDS (Central) Air Monitoring
6/26/2025



PM2.5 Particulate Summary

Station ID/Location	Daily Average PM2.5 Conc (mg/m ³)	Max PM2.5 Conc (mg/m ³)	Time of Max
Station 1 (TDS)	0.002	0.046	6:45
Station 2 (TDS)	0.007	0.362	6:32
Station 3 (Haul Road)	0.004	0.023	11:35
Station 4 (Haul Road)	0.000	0.050	13:56

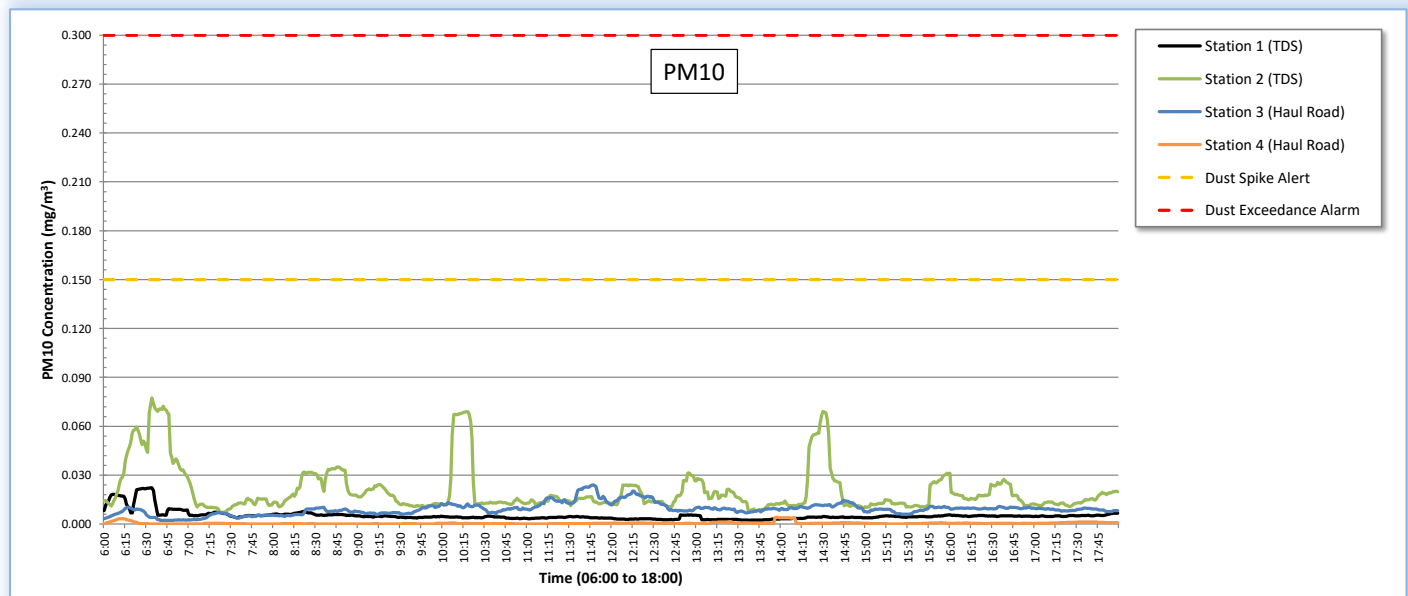
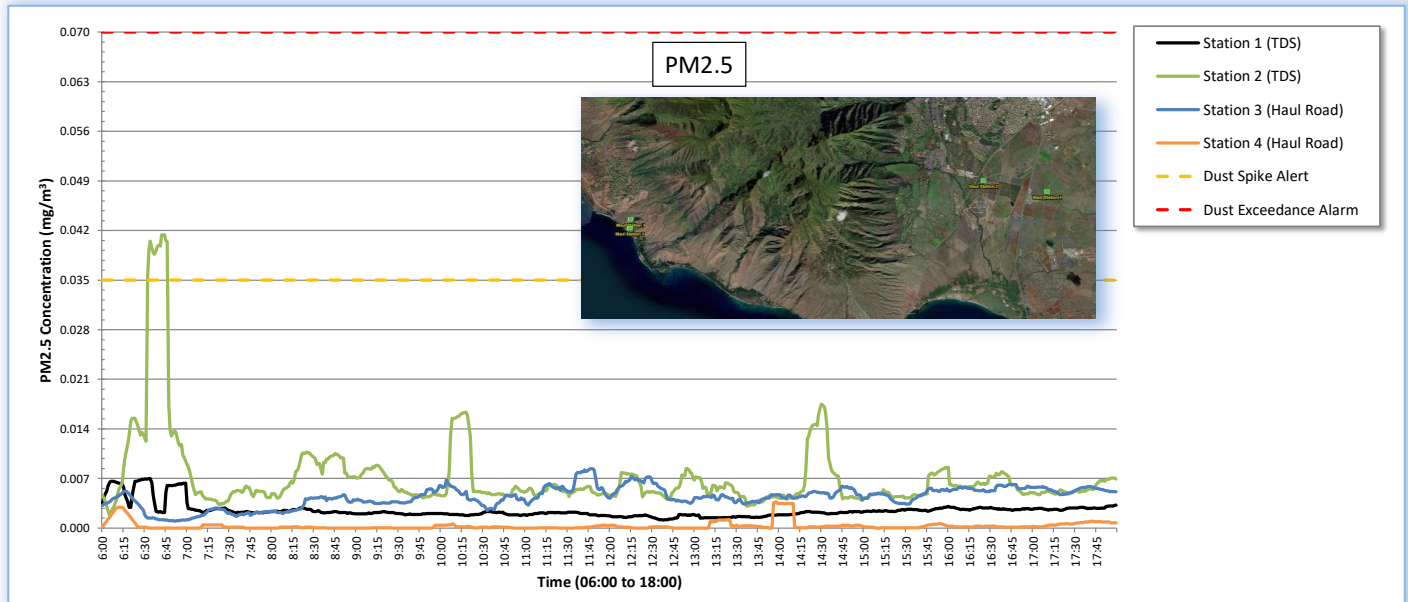
15-Min Avg PM2.5 Conc (mg/m ³)	Max 15-Min PM2.5 Conc (mg/m ³)	Time of Max 15-Min Avg
0.002	0.007	6:33
0.007	0.041	6:42
0.004	0.008	11:47
0.000	0.004	13:58

PM10 Particulate Summary

Station ID/Location	Daily Average PM10 Conc (mg/m ³)	Max PM10 Conc (mg/m ³)	Time of Max
Station 1 (TDS)	0.005	0.094	6:21
Station 2 (TDS)	0.038	0.420	6:32
Station 3 (Haul Road)	0.009	0.068	11:35
Station 4 (Haul Road)	0.000	0.050	13:56

15-Min Avg PM10 Conc (mg/m ³)	Max 15-Min PM10 Conc (mg/m ³)	Time of Max 15-Min Avg
0.005	0.022	6:33
0.021	0.077	6:34
0.009	0.024	11:47
0.000	0.004	13:57

"--" indicates no data or NA



DEBRIS TRANSPORT AIR MONITORING

MAUI TDS(OLOWALU) TO PDS(CENTRAL)

June 27, 2025

Prepared for
United States Army Corps of Engineers



Prepared by:



**ECC Constructors LLC
700 Airport Blvd., Suite 250
Burlingame, CA 94010
Tel: 650.347.1555
Fax: 650.347.8789
Corporate@ecc.net**



Debris Transfer Air monitoring: June 27, 2025

Maui TDS (Olowalu) to PDS (Central) Air Monitoring

Summary:

The Air Monitoring and Surveillance Plan includes the use of real-time particulate monitors located in areas around the active debris removal operations. The AMSP has established Daily Project Limits of 70 ug/m³ for particulates in the PM 2.5 size range and 300 ug/m³ for particulates in the PM 10 size range as Daily Average concentrations. The Plan also establishes Operational Control Action Levels at one-half the Project Limit levels to help ensure effectiveness of operational controls.

The data collected by real-time dust monitors is uploaded via cellular telemetry to a cloud-based data management system. In addition to storing the data, the system allows for communications on a real-time basis by text and email, as well as integration and analysis of the data.

The AMSP has established an alert system with criteria so that operational controls can be investigated and, if necessary, adjusted throughout the day so that the particle concentrations remain below the Project Limit. If any 15-minute block average hits an Operational Alert level, the Air Monitoring Team receives an immediate alert which triggers an investigation. If necessary, operational controls can then be immediately adjusted to preclude a Project Limit exceedance.

Debris transfer continued today.

Weather:

		TDS	Haul Road
Precipitation		Light early morning showers and gusty wind conditions observed from ~0600 - 0800. Skies mostly cloudy all day. Isolated rain showers expected for rest of day. Overnight chance of precipitation is 20%.	Cloudy skies and overcast conditions persisted all day. No precipitation observed all day at the haul route air monitoring locations. Overnight chance of precipitation is 10%.
Wind Direction		NW	NNE
Wind Speed	Average	13 mph	20 mph
	Range	7-20 mph	12-27 mph
Air Quality Index		21	22

Station Location Summary:

Maui Station 1 and Maui Station 2 were set up at the perimeter of the current TDS. Maui station 3 and Station 4 were set up on Haul Road.

Station Data:

No stations exceeded the Project limit or the Action Level for the day.

		Maui Station 1	Maui Station 2	Maui Station 3	Maui Station 4	Project Limit	Action Level
PM 2.5	Avg, ug/M ³	3	6	6	1	70	35
PM 10	Avg, ug/M ³	7	38	11	2	300	150

Monitoring Station Map:





DAILY AIR MONITORING REPORT

Real-Time Particulates
Maui TDS (Olowalu) to PDS (Central) Air Monitoring
6/27/2025



PM2.5 Particulate Summary

Station ID/Location	Daily Average PM2.5 Conc (mg/m ³)	Max PM2.5 Conc (mg/m ³)	Time of Max
Station 1 (TDS)	0.003	0.040	12:50
Station 2 (TDS)	0.006	0.122	8:08
Station 3 (Haul Road)	0.006	0.034	12:51
Station 4 (Haul Road)	0.001	0.007	6:01

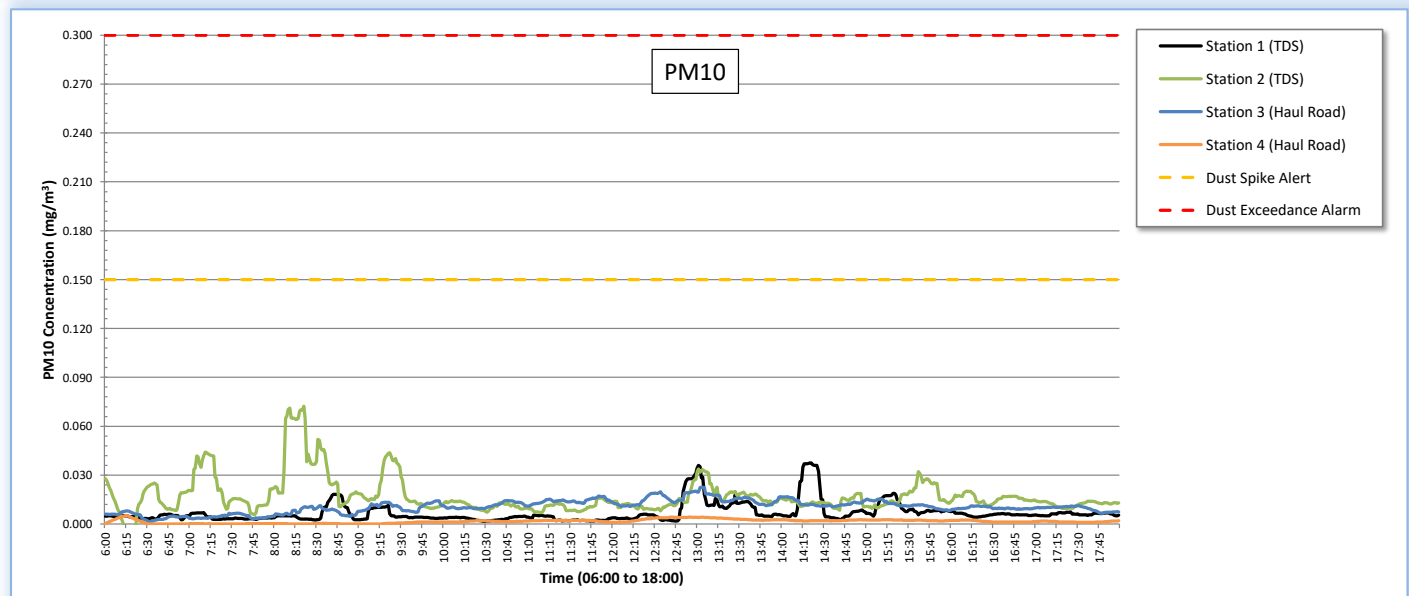
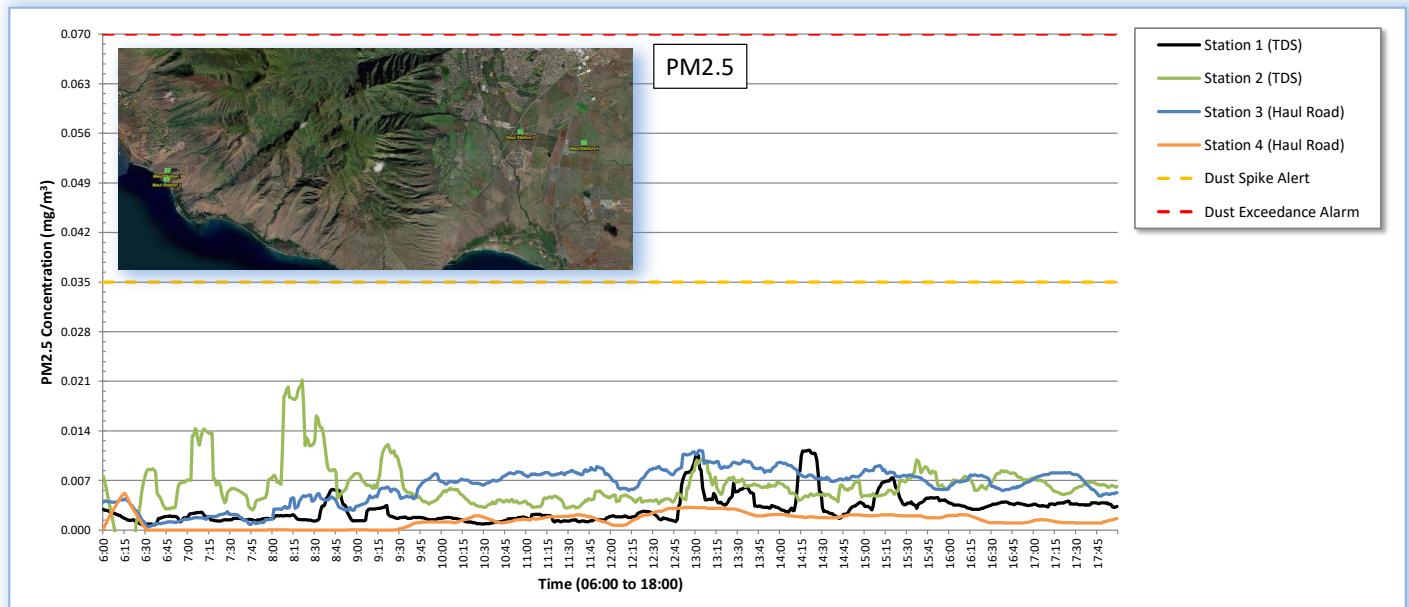
15-Min Avg PM2.5 Conc (mg/m ³)	Max 15-Min PM2.5 Conc (mg/m ³)	Time of Max 15-Min Avg
0.003	0.011	14:20
0.006	0.021	8:21
0.006	0.011	13:03
0.001	0.005	6:15

PM10 Particulate Summary

Station ID/Location	Daily Average PM10 Conc (mg/m ³)	Max PM10 Conc (mg/m ³)	Time of Max
Station 1 (TDS)	0.007	0.154	12:50
Station 2 (TDS)	0.038	0.494	8:08
Station 3 (Haul Road)	0.011	0.071	12:51
Station 4 (Haul Road)	0.002	0.007	6:01

15-Min Avg PM10 Conc (mg/m ³)	Max 15-Min PM10 Conc (mg/m ³)	Time of Max 15-Min Avg
0.007	0.037	14:20
0.017	0.072	8:21
0.011	0.023	13:03
0.002	0.005	6:15

"--" indicates no data or NA



DEBRIS TRANSPORT AIR MONITORING

MAUI TDS(OLOWALU) TO PDS(CENTRAL)

June 28, 2025

Prepared for
United States Army Corps of Engineers



Prepared by:



**ECC Constructors LLC
700 Airport Blvd., Suite 250
Burlingame, CA 94010
Tel: 650.347.1555
Fax: 650.347.8789
Corporate@ecc.net**



Debris Transfer Air monitoring: June 28, 2025

Maui TDS (Olowalu) to PDS (Central) Air Monitoring

Summary:

The Air Monitoring and Surveillance Plan includes the use of real-time particulate monitors located in areas around the active debris removal operations. The AMSP has established Daily Project Limits of 70 ug/m³ for particulates in the PM 2.5 size range and 300 ug/m³ for particulates in the PM 10 size range as Daily Average concentrations. The Plan also establishes Operational Control Action Levels at one-half the Project Limit levels to help ensure effectiveness of operational controls.

The data collected by real-time dust monitors is uploaded via cellular telemetry to a cloud-based data management system. In addition to storing the data, the system allows for communications on a real-time basis by text and email, as well as integration and analysis of the data.

The AMSP has established an alert system with criteria so that operational controls can be investigated and, if necessary, adjusted throughout the day so that the particle concentrations remain below the Project Limit. If any 15-minute block average hits an Operational Alert level, the Air Monitoring Team receives an immediate alert which triggers an investigation. If necessary, operational controls can then be immediately adjusted to preclude a Project Limit exceedance.

Debris transfer continued today.

Weather:

		TDS	Haul Road
Precipitation		Overcast conditions led to gusty wind conditions observed from ~0600 - 0900. Skies were cloudy until mid-afternoon. Isolated moderate rain showers expected overnight. Overnight chance of precipitation is 10%.	Cloudy skies and overcast conditions persisted all day. No precipitation observed all day at the haul route air monitoring locations. Overnight chance of precipitation is 10%.
Wind Direction		NW Shifting to NE	NE
Wind Speed	Average	9 mph	20-23 mph
	Range	7-23 mph	14-30 mph
Air Quality Index		29	30

Station Location Summary:

Maui Station 1 and Maui Station 2 were set up at the perimeter of the current TDS. Maui station 3 and Station 4 were set up on Haul Road.

Station Data:

No stations exceeded the Project limit or the Action Level for the day.

		Maui Station 1	Maui Station 2	Maui Station 3	Maui Station 4	Project Limit	Action Level
PM 2.5	Avg, ug/M ³	4	8	8	2	70	35
PM 10	Avg, ug/M ³	8	40	17	2	300	150

Monitoring Station Map:





DAILY AIR MONITORING REPORT

Real-Time Particulates
Maui TDS (Olowalu) to PDS (Central) Air Monitoring
6/28/2025



PM2.5 Particulate Summary

Station ID/Location	Daily Average PM2.5 Conc (mg/m ³)	Max PM2.5 Conc (mg/m ³)	Time of Max
Station 1 (TDS)	0.004	0.051	8:03
Station 2 (TDS)	0.008	0.138	15:39
Station 3 (Haul Road)	0.008	0.048	17:58
Station 4 (Haul Road)	0.002	0.006	6:01

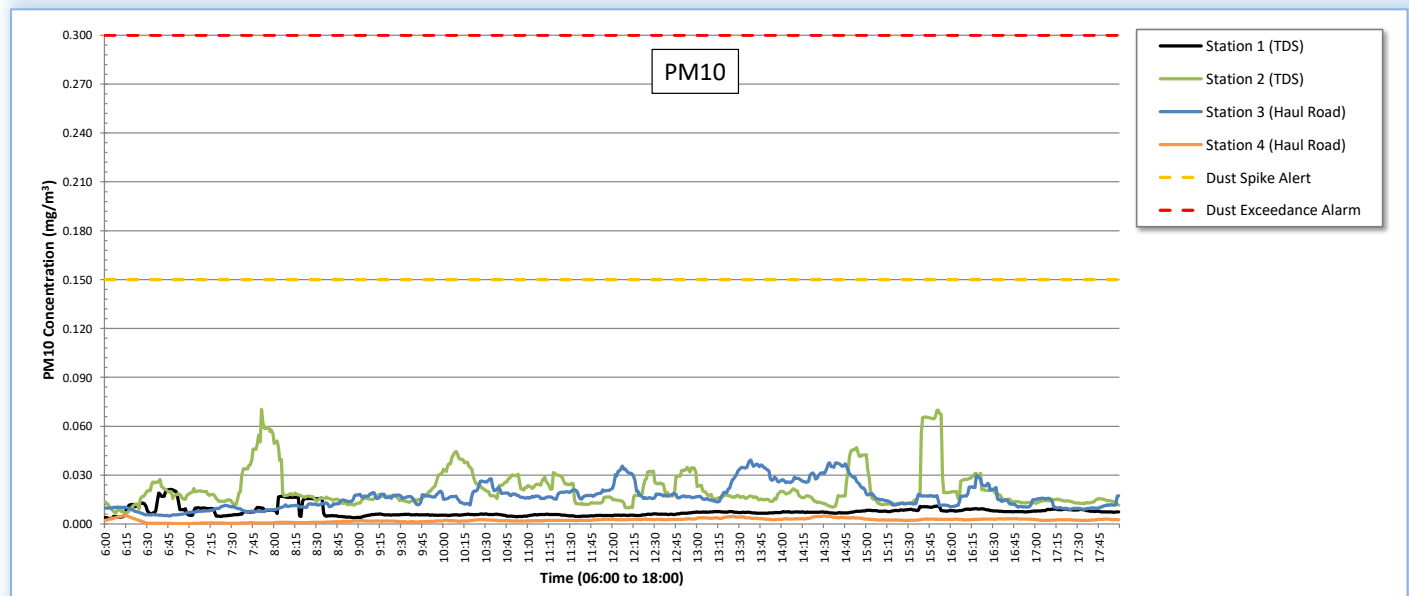
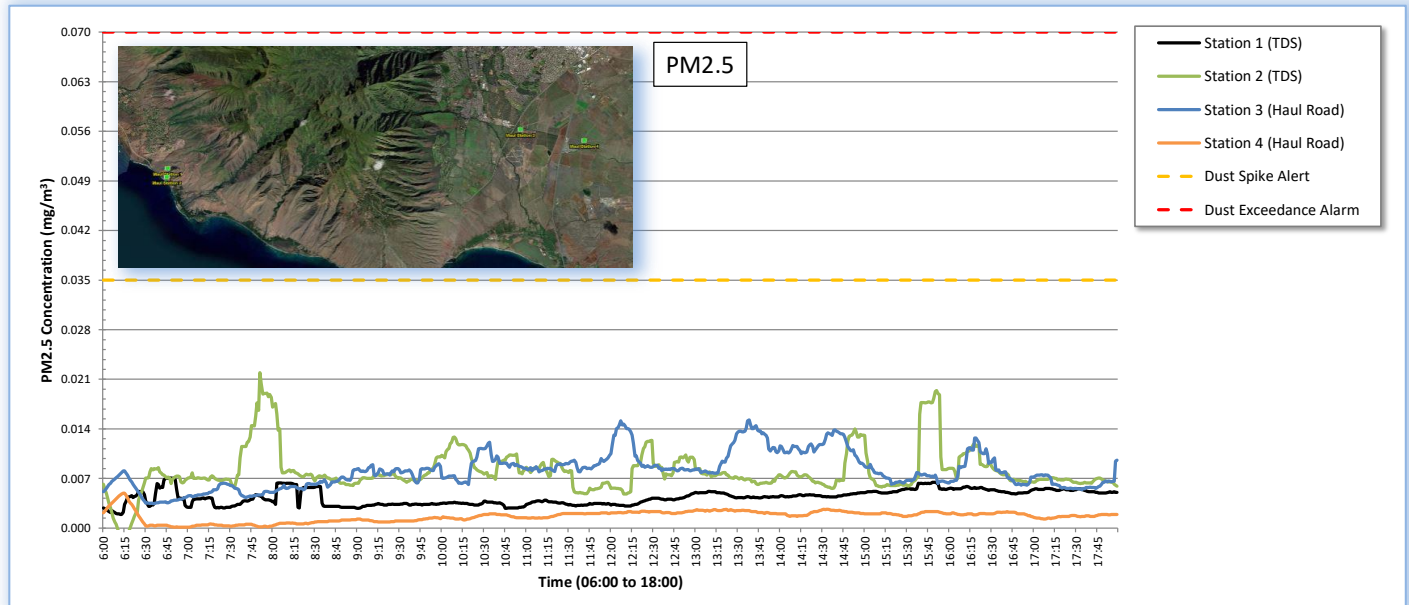
15-Min Avg PM2.5 Conc (mg/m ³)	Max 15-Min PM2.5 Conc (mg/m ³)	Time of Max 15-Min Avg
0.004	0.007	6:46
0.008	0.022	7:51
0.008	0.015	13:38
0.002	0.005	6:14

PM10 Particulate Summary

Station ID/Location	Daily Average PM10 Conc (mg/m ³)	Max PM10 Conc (mg/m ³)	Time of Max
Station 1 (TDS)	0.008	0.174	8:03
Station 2 (TDS)	0.040	0.582	15:39
Station 3 (Haul Road)	0.017	0.116	16:18
Station 4 (Haul Road)	0.002	0.010	13:19

15-Min Avg PM10 Conc (mg/m ³)	Max 15-Min PM10 Conc (mg/m ³)	Time of Max 15-Min Avg
0.008	0.021	6:46
0.021	0.070	7:51
0.017	0.039	13:38
0.002	0.005	6:14

"--" indicates no data or NA



DEBRIS TRANSPORT AIR MONITORING

MAUI TDS(OLOWALU) TO PDS(CENTRAL)

June 29, 2025

Prepared for
United States Army Corps of Engineers



Prepared by:



**ECC Constructors LLC
700 Airport Blvd., Suite 250
Burlingame, CA 94010
Tel: 650.347.1555
Fax: 650.347.8789
Corporate@ecc.net**



Debris Transfer Air monitoring: June 29, 2025

Maui TDS (Olowalu) to PDS (Central) Air Monitoring

Summary:

The Air Monitoring and Surveillance Plan includes the use of real-time particulate monitors located in areas around the active debris removal operations. The AMSP has established Daily Project Limits of 70 ug/m³ for particulates in the PM 2.5 size range and 300 ug/m³ for particulates in the PM 10 size range as Daily Average concentrations. The Plan also establishes Operational Control Action Levels at one-half the Project Limit levels to help ensure effectiveness of operational controls.

The data collected by real-time dust monitors is uploaded via cellular telemetry to a cloud-based data management system. In addition to storing the data, the system allows for communications on a real-time basis by text and email, as well as integration and analysis of the data.

The AMSP has established an alert system with criteria so that operational controls can be investigated and, if necessary, adjusted throughout the day so that the particle concentrations remain below the Project Limit. If any 15-minute block average hits an Operational Alert level, the Air Monitoring Team receives an immediate alert which triggers an investigation. If necessary, operational controls can then be immediately adjusted to preclude a Project Limit exceedance.

Debris transfer continued today.

Weather:

		TDS	Haul Road
Precipitation		Winds kicked up around 0610. Overcast conditions fluctuated throughout the day. Isolated moderate rain showers are likely to occur overnight. Overnight chance of precipitation is 40%.	Partly cloudy skies throughout the day. No precipitation observed all day at the haul route air monitoring locations. Overnight chance of precipitation is 10%.
Wind Direction		NE	NE
Wind Speed	Average	7 mph	16 mph
	Range	6-17 mph	9-24 mph
Air Quality Index		29	24

Station Location Summary:

Maui Station 1 and Maui Station 2 were set up at the perimeter of the current TDS. Maui station 3 and Station 4 were set up on Haul Road.

Station Data:

No stations exceeded the Project limit or the Action Level for the day.

		Maui Station 1	Maui Station 2	Maui Station 3	Maui Station 4	Project Limit	Action Level
PM 2.5	Avg, ug/M ³	4	9	9	1	70	35
PM 10	Avg, ug/M ³	9	39	7	1	300	150

Monitoring Station Map:





DAILY AIR MONITORING REPORT

Real-Time Particulates
Maui TDS (Olowalu) to PDS (Central) Air Monitoring
6/29/2025



PM2.5 Particulate Summary

Station ID/Location	Daily Average PM2.5 Conc (mg/m ³)	Max PM2.5 Conc (mg/m ³)	Time of Max
Station 1 (TDS)	0.004	0.043	6:42
Station 2 (TDS)	0.009	0.150	12:42
Station 3 (Haul Road)	0.004	0.025	12:12
Station 4 (Haul Road)	0.001	0.006	6:09

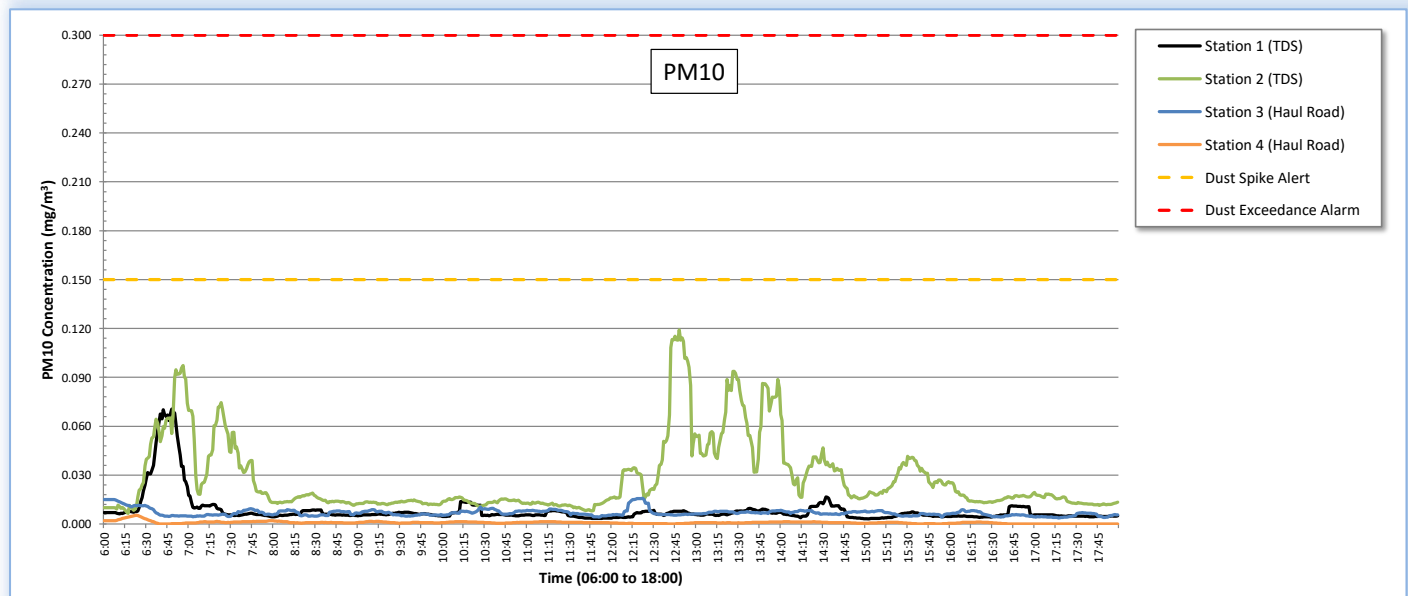
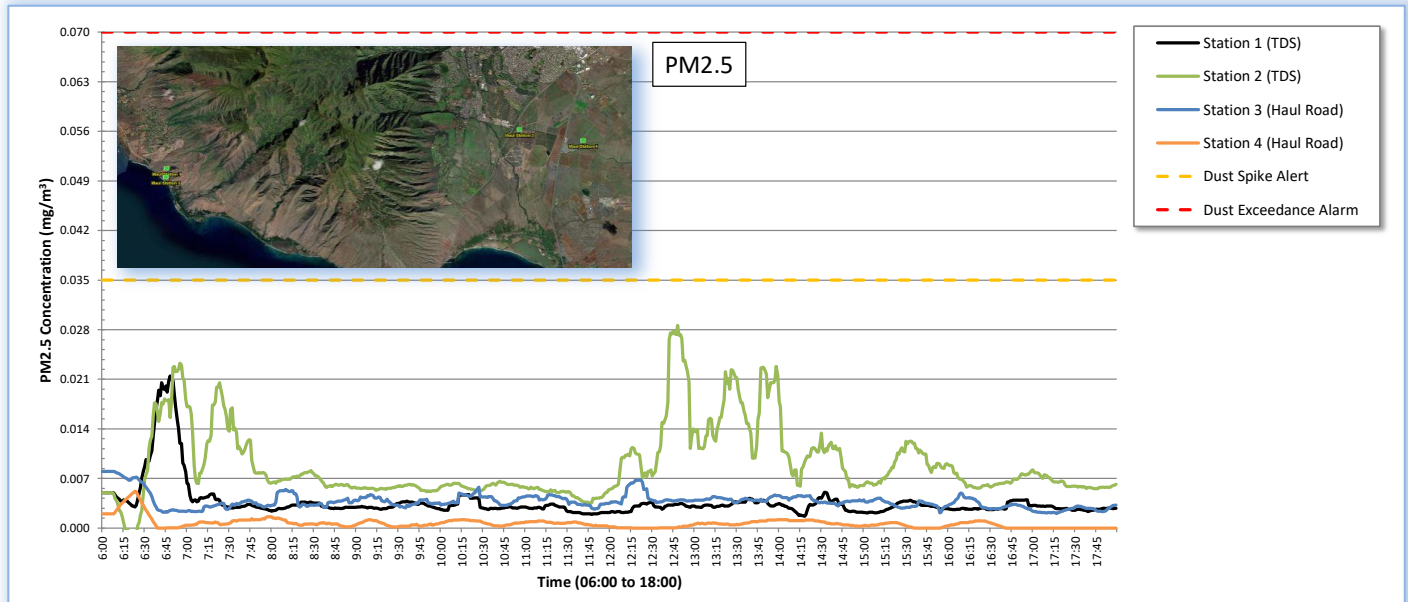
15-Min Avg PM2.5 Conc (mg/m ³)	Max 15-Min PM2.5 Conc (mg/m ³)	Time of Max 15-Min Avg
0.004	0.021	6:48
0.009	0.029	12:48
0.004	0.008	6:00
0.001	0.005	6:23

PM10 Particulate Summary

Station ID/Location	Daily Average PM10 Conc (mg/m ³)	Max PM10 Conc (mg/m ³)	Time of Max
Station 1 (TDS)	0.008	0.132	6:42
Station 2 (TDS)	0.039	0.678	12:42
Station 3 (Haul Road)	0.007	0.079	12:12
Station 4 (Haul Road)	0.001	0.006	6:09

15-Min Avg PM10 Conc (mg/m ³)	Max 15-Min PM10 Conc (mg/m ³)	Time of Max 15-Min Avg
0.008	0.071	6:48
0.028	0.119	12:48
0.007	0.016	12:22
0.001	0.005	6:23

"--" indicates no data or NA



DEBRIS TRANSPORT AIR MONITORING

MAUI TDS(OLOWALU) TO PDS(CENTRAL)

June 30, 2025

Prepared for
United States Army Corps of Engineers



Prepared by:



**ECC Constructors LLC
700 Airport Blvd., Suite 250
Burlingame, CA 94010
Tel: 650.347.1555
Fax: 650.347.8789
Corporate@ecc.net**



Debris Transfer Air monitoring: June 30, 2025

Maui TDS (Olowalu) to PDS (Central) Air Monitoring

Summary:

The Air Monitoring and Surveillance Plan includes the use of real-time particulate monitors located in areas around the active debris removal operations. The AMSP has established Daily Project Limits of 70 ug/m³ for particulates in the PM 2.5 size range and 300 ug/m³ for particulates in the PM 10 size range as Daily Average concentrations. The Plan also establishes Operational Control Action Levels at one-half the Project Limit levels to help ensure effectiveness of operational controls.

The data collected by real-time dust monitors is uploaded via cellular telemetry to a cloud-based data management system. In addition to storing the data, the system allows for communications on a real-time basis by text and email, as well as integration and analysis of the data.

The AMSP has established an alert system with criteria so that operational controls can be investigated and, if necessary, adjusted throughout the day so that the particle concentrations remain below the Project Limit. If any 15-minute block average hits an Operational Alert level, the Air Monitoring Team receives an immediate alert which triggers an investigation. If necessary, operational controls can then be immediately adjusted to preclude a Project Limit exceedance.

Debris transfer continued today.

Weather:

		TDS	Haul Road
Precipitation		No precipitation observed all day. Skies clear all day with low winds. Overnight chance of precipitation is 10%	No precipitation observed all day at the haul route air monitoring locations. Overnight chance of precipitation is 10%.
Wind Direction		NE shifting S	NE
Wind Speed	Average	8 mph	15-21 mph
	Range	6-16 mph	9-28 mph
Air Quality Index		23	20

Station Location Summary:

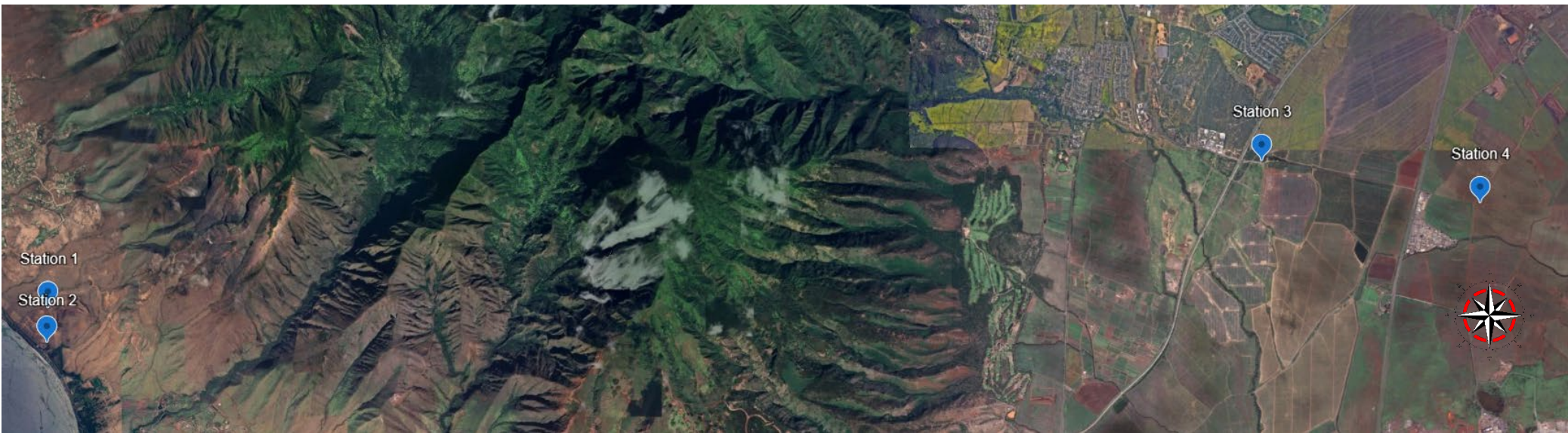
Maui Station 1 and Maui Station 2 were set up at the perimeter of the current TDS. Maui station 3 and Station 4 were set up on Haul Road.

Station Data:

No stations exceeded the Project limit or the Action Level for the day.

		Maui Station 1	Maui Station 2	Maui Station 3	Maui Station 4	Project Limit	Action Level
PM 2.5	Avg, ug/M ³	4	8	5	1	70	35
PM 10	Avg, ug/M ³	8	38	9	1	300	150

Monitoring Station Map:





DAILY AIR MONITORING REPORT

Real-Time Particulates
Maui TDS (Olowalu) to PDS (Central) Air Monitoring
6/30/2025



PM2.5 Particulate Summary

Station ID/Location	Daily Average PM2.5 Conc (mg/m ³)	Max PM2.5 Conc (mg/m ³)	Time of Max
Station 1 (TDS)	0.004	0.066	7:19
Station 2 (TDS)	0.008	0.107	8:32
Station 3 (Haul Road)	0.005	0.025	15:03
Station 4 (Haul Road)	0.001	0.007	6:05

15-Min Avg PM2.5 Conc (mg/m ³)	Max 15-Min PM2.5 Conc (mg/m ³)	Time of Max 15-Min Avg
0.004	0.021	7:27
0.008	0.034	8:24
0.005	0.009	14:53
0.001	0.006	6:18

PM10 Particulate Summary

Station ID/Location	Daily Average PM10 Conc (mg/m ³)	Max PM10 Conc (mg/m ³)	Time of Max
Station 1 (TDS)	0.008	0.197	7:19
Station 2 (TDS)	0.038	0.327	8:32
Station 3 (Haul Road)	0.009	0.064	14:40
Station 4 (Haul Road)	0.001	0.019	16:06

15-Min Avg PM10 Conc (mg/m ³)	Max 15-Min PM10 Conc (mg/m ³)	Time of Max 15-Min Avg
0.008	0.065	7:27
0.022	0.132	8:24
0.009	0.022	14:53
0.001	0.006	6:18

"--" indicates no data or NA

