

Attached is the Air monitoring report for **Friday, 19-January-2024.**

Weather station 07 +sensitivity receptor and Weather station 11 were set up around **153 Kaniau Rd.** for continued debris removal air monitoring.

Weather station 11, Station 13 + sensitivity receptor, and Station 12 were set up around **1443 Ainakea Rd.** for continued debris removal air monitoring.

Station 15 + sensitivity receptor and Station 14 were set up around **822 Kalena St.** for continued debris removal air monitoring.

Station 8 and Station 3 were set up around **456 Ilikahi St.** and **75 Kauaula Rd.** for continued debris removal air monitoring.

Attached below is a map of all the Stations with their geographic coordinates.

All time-weighted averages were below established action levels at all stations/locations.

The ECC field staff and field crews continued to follow the prescribed methods of dust suppression and notification procedures.

The crews continue to use water for dust suppression all day.

The AMT did not observe any dust resulting from the debris removal activities.

Please reference the summary table below for details.

		Envizor-3	Envizor-7	Envizor-8	Envizor-11	Envizor-12	Envizor-13	Envizor-14	Envizor-15	Exposure Limit	Action Limit
PM 2.5	Avg, ug/M3	6.10	2.62	1.86	Weather	2.29	-	2.52	4.04	70	35
PM 10	Avg, ug/M3	6.6	3.68	1.91	Weather	5.04	-	3.79	5.11	300	150



Envizor-3	20.8644000, -156.6710000
Envizor-7 /SR	20.9002000, -156.6800000
Envizor-8	20.8695000, -156.6757000
Envizor-11	20.8963000, -156.6831000
Envizor-12	20.8897000, -156.6830000
Envizor-13	20.8952000, -156.6839000
Envizor-14	20.8791000, -156.6757000
Envizor-15/ SR	20.8838000, -156.6705000

Attached is the Air monitoring report for **Sunday, 21-January-2024.**

Weather Station 11 and Station 13 + sensitivity receptor were set up around **153 Kaniau Rd.** for continued debris removal air monitoring.

Station 15 + sensitivity receptor, Weather Station 11, Station 12, and Weather Station 7 were set up around **1443 Ainakea Rd.** for continued debris removal air monitoring.

Station 14 and Station 3 + sensitivity receptor were set up around **822 Kalena St.** for continued debris removal air monitoring.

Station 8 and Station 7 were set up around **456 Ilikahi St.** and **75 Kauaula Rd.** for continued debris removal air monitoring.

Attached below is a map of all Stations with their geographic coordinates.

All time-weighted averages were below established action levels at all stations/locations.

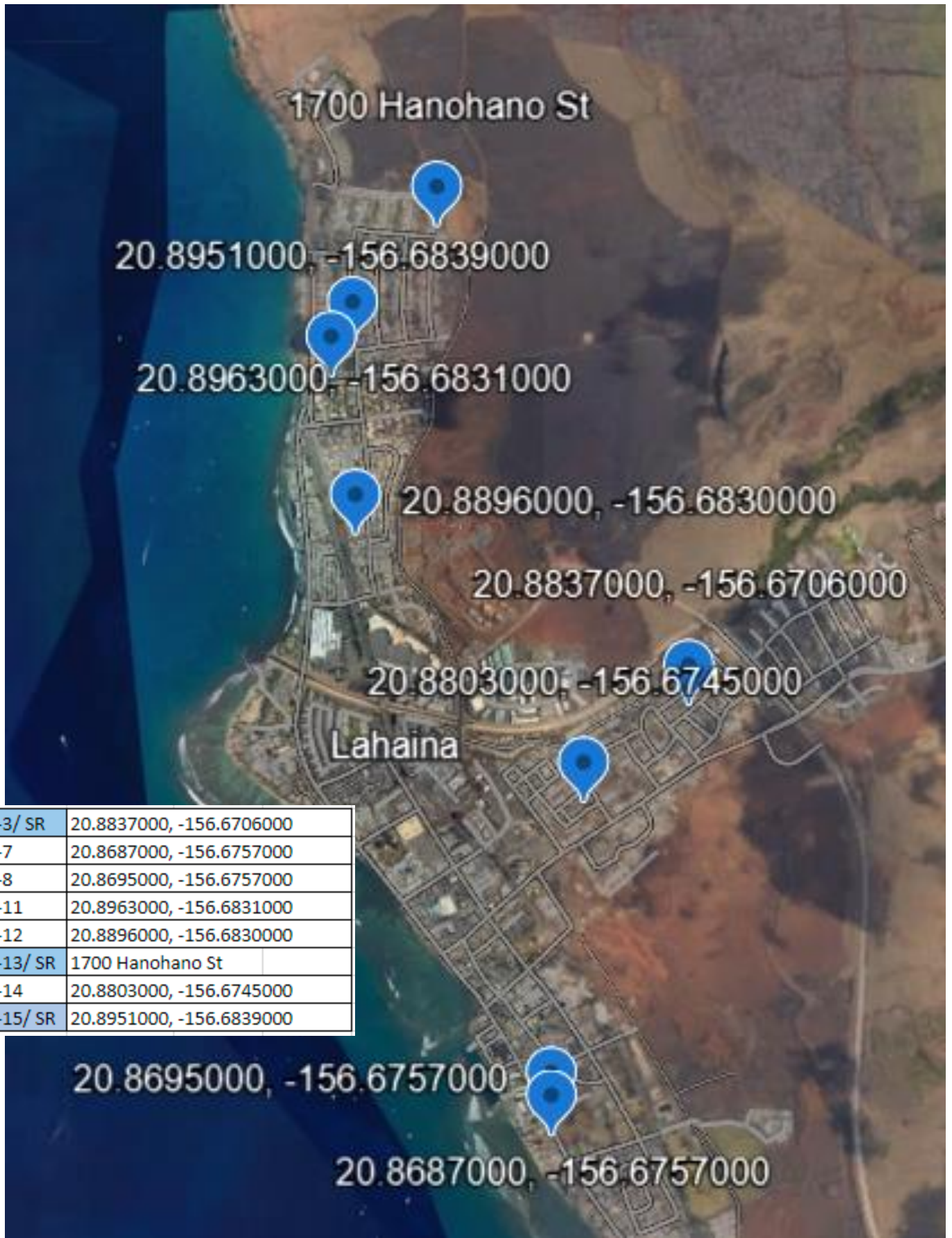
The ECC field staff and field crews continued to follow the prescribed methods of dust suppression and notification procedures.

The crews continue to use water for dust suppression all day.

The AMT did not observe any dust resulting from the debris removal activities.

Please reference the summary table below for details.

		Envizor-3	Envizor-7	Envizor-8	Envizor-1 1	Envizor-1 2	Envizor-1 3	Envizor-1 4	Envizor-1 5	Exposure Limit	Action Limit
PM 2.5	Avg, ug/M3	8.54	5.60	2.32	Weather	3.10	-	3.21	7.68	70	35
PM 10	Avg, ug/M3	9.5	7.27	2.32	Weather	5.35	-	4.44	10.89	300	150



Envizor-3/ SR	20.8837000, -156.6706000
Envizor-7	20.8687000, -156.6757000
Envizor-8	20.8695000, -156.6757000
Envizor-11	20.8963000, -156.6831000
Envizor-12	20.8896000, -156.6830000
Envizor-13/ SR	1700 Hanohano St
Envizor-14	20.8803000, -156.6745000
Envizor-15/ SR	20.8951000, -156.6839000

Attached is the Air monitoring report for **Monday, 22-January-2024.**

Station 3 + sensitivity receptor and Station 12 were set up around **153 Kaniau Rd.** for continued debris removal air monitoring.

Weather Station 11 and Station 13 were set up around **1443 Ainakea Rd.** for continued debris removal air monitoring.

Station 14 + sensitivity receptor and Station 15 were set up around **571 Kahako St.** for continued debris removal air monitoring.

Station 8 and Station 7 were set up around **456 Ilikahi St.** and **69 Kauaula Rd.** for continued debris removal air monitoring.

Station 6 was set up around the **Vessel Yard.**

Attached below is a map of all Stations with their geographic coordinates

All time-weighted averages were below established action levels at all stations/locations.

Weather station 11 reported values above the action limit for PM-2.5 from 12:11 to 13:30 and reported negative values from 15:59 to 21:07

The ECC field staff and field crews continued to follow the prescribed methods of dust suppression and notification procedures.

The crews continue to use water for dust suppression all day.

The AMT did not observe any dust resulting from the debris removal activities.

Please reference summary table below for details.

Debris Removal:

		Envizor-3	Envizor-7	Envizor-8	Envizor-1 1	Envizor-1 2	Envizor-1 3	Envizor-1 4	Envizor-1 5	Exposure Limit	Action Limit
PM 2.5	Avg, ug/M3	6.55	5.16	7.33	25.95	4.87	8.46	3.39	6.16	70	35
PM 10	Avg, ug/M3	7.7	7.28	7.33	24.26	10.75	9.87	4.95	8.44	300	150

Vessel Yard

		Envizor-6	Exposure Limit	Action Limit
PM 2.5	Avg, ug/M3	3.38	70	35
PM 10	Avg, ug/M3	8.39	300	150



Debris Removal	
Envizor-3/ SR	20.900200, -156.679900
Envizor-7	20.8686, -156.6757
Envizor-8	20.8633, -156.6702
Envizor-11/ SR	20.895200, -156.684000
Envizor-12	20.8963, -156.6831
Envizor-13	20.889600, -156.683100
Envizor-14/SR	20.8841, -156.6701
Envizor-15	20.8803, -156.6744

Vessel Yard	
Envizor-6	20.8712, -156.6769

Attached is the Air monitoring report for **Tuesday, 23-January-2024.**

Station 3 + sensitivity receptor and Station 13 were set up around **145 Kaniau Rd.** for continued debris removal air monitoring.

Station 12, Station 12+ Sensitivity Receptor, and Station 8 were set up around **1528 Malo St.** for continued debris removal air monitoring.

Station 14 + sensitivity receptor and Station 15 were set up around **571 Kahako St.** for continued debris removal air monitoring.

Station 6 and Station 7 were set up around **477 Ilikahi St.** and **69 Kauaula Rd.** for continued debris removal air monitoring.

Station 4, station 11, and Weather Station 5 were set up around the **Temporary Debris Storage.**

All time-weighted averages were below established action levels at all stations/locations.

Station 11 reported negative values from 10:47 to 13:49 for both PM-10 and PM-2.5 and again from 15:10-20:08 for PM-2.5

The ECC field staff and field crews continued to follow the prescribed methods of dust suppression and notification procedures.

The crews continue to use water for dust suppression all day.

The AMT did not observe any dust resulting from the debris removal activities.

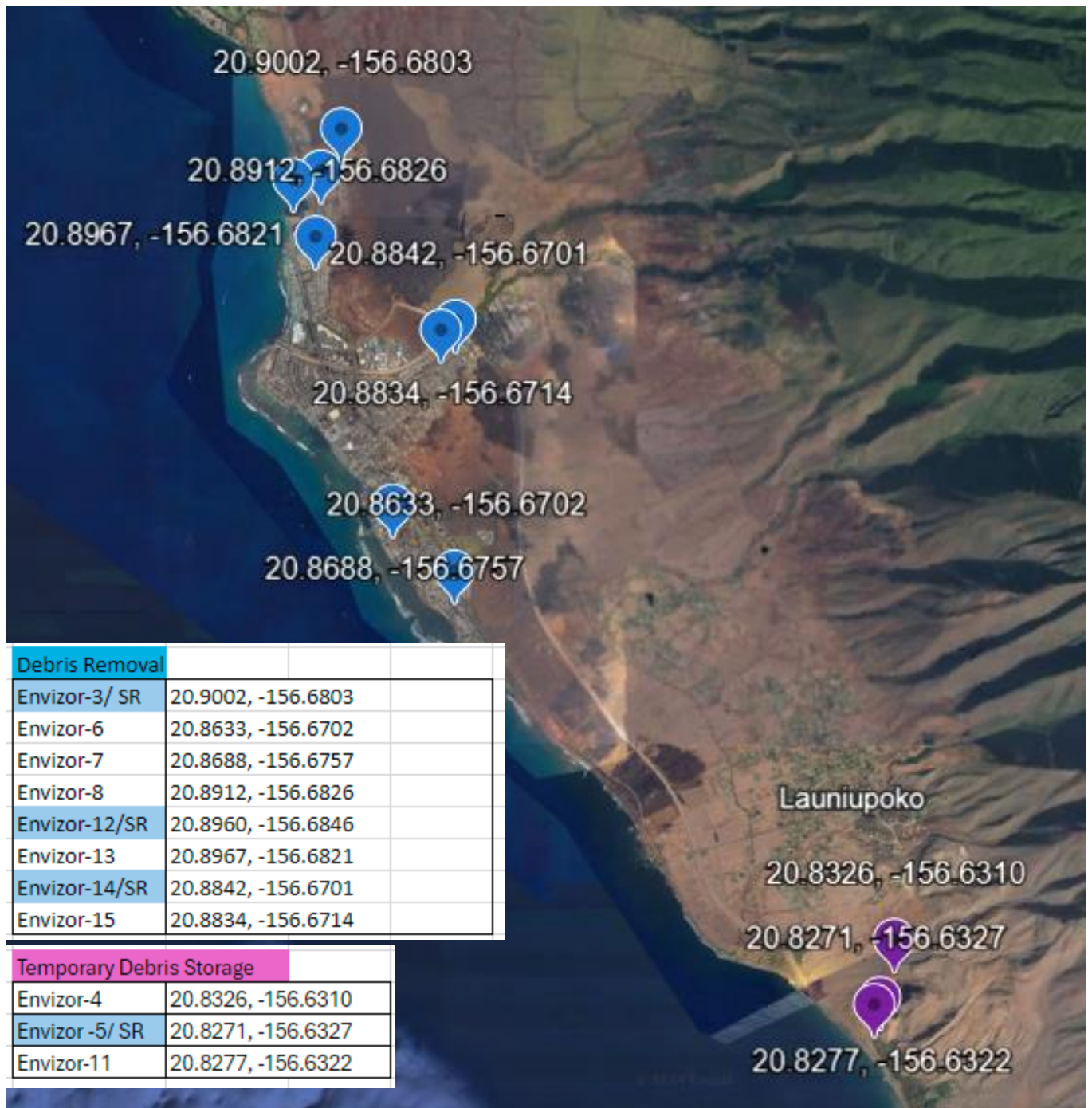
Please reference summary table below for details.

Debris removal:

		Envizor-3	Envizor-7	Envizor-6	Envizor-8	Envizor-12	Envizor-13	Envizor-14	Envizor-15	Exposure Limit	Action Limit
PM 2.5	Avg, ug/M3	7.16	7.02	5.36	4.10	10.87	8.51	3.48	7.92	70	35
PM 10	Avg, ug/M3	8.4	9.09	8.64	4.10	21.73	9.74	5.02	12.56	300	150

Temporary Debris Storage:

		Envizor-4	Envizor 5	Envizor-11	Exposure Limit	Action Limit
PM 2.5	Avg, ug/M3	7.14	16.24	1.91	70	35
PM 10	Avg, ug/M3	12.54	16.24	3.08	300	150





Daily Dust Monitoring Report: January 26, 2024

Lahaina Debris Removal Operation

Summary:

The ECC field staff and field crews continued to follow the prescribed methods of dust suppression and notification procedures.

The crews continue to use water for dust suppression all day.

Station Location Summary:

Station 6+ Sensitive Receptor, Weather Station 2, and Station 3 were set up around **1606 AA St.** for continued debris removal air monitoring.

Station 3 and Station 12 + Sensitive Receptor were set up around **18 Kekai Rd.** for continued debris removal air monitoring.

Station 15 + Sensitive receptor and Station 11 were set up around **565 Kahako St.** for continued debris removal air monitoring.

Station 11, Station 13 and Station 5 were set up around **340 Komo Mai St.** and **285 Komo Mai St.** for continued debris removal air monitoring.

Weather Station 7 and Station 8 were set up around **469 Ilikahi St.** and **51 Kauaula Rd.** for continued debris removal air monitoring.

Station 14 was set up around the **Vessel Yard.**

Station Data:

Station 11 reported negative values from 9:40-11:54

Station 12 reported negative values from 12:02-12:37

- Debris removal:

		Envizor-2	Envizor-3	Envizor 5	Envizor-6	Envizor-7	Envizor-8	Envizor-11	Envizor-12	Envizor-13	Envizor-15	Exposure Limit	Action Limit
PM 2.5	Avg, ug/M3	17.27	7.62	7.58	1.05	4.42	5.43	8.42	5.79	4.52	4.01	70	35
PM 10	Avg, ug/M3	18.68	9.2	7.58	2.26	5.90	5.43	8.62	11.14	5.01	4.52	300	150

- Vessel Yard:

		Envizor-14	Exposure Limit	Action Limit
PM 2.5	Avg, ug/M3	3.89	70	35
PM 10	Avg, ug/M3	5.89	300	150



Debris Removal

Envizor-2	20.8992, -156.6797	
Envizor-3	20.8939, -156.6815	
Envizor-5	20.8814, -156.6755	
Envizor-6/ SR	20.9001, -156.6811	
Envizor-7	20.8692, -156.6756	
Envizor-8	20.8643, -156.6704	
Envizor-11	20.8822, -156.6716	
Envizor-12/SR	20.8974, -156.6846	
Envizor-13	20.8844, -156.6748	
Envizor-15/ SR	20.8840, -156.6701	

Vessel Yard

Envizor-14	20.8717, -156.6772	
Envizor-15	20.8939, -156.6822	

Vessel Yard

Envizor-14	20.8714, -156.6770	
------------	--------------------	--



Daily Dust Monitoring Report: January 27, 2024

Lahaina Debris Removal Operation

Summary:

The ECC field staff and field crews continued to follow the prescribed methods of dust suppression and notification procedures.

The crews continue to use water for dust suppression all day.

Station Location Summary:

Station 4+ Sensitive Receptor, Weather Station 2, and Station 6/12 were set up around **1606 AA St.** for continued debris removal air monitoring.

Station 06 replaced Station 12 at 10:42 due to the Station 12 modem not operating properly.

Station 6 and Station 3 + Sensitive Receptor were set up around **18 Kekai Rd.** for continued debris removal air monitoring.

Station 5+ Sensitive receptor and Station 11 were set up around **577 Kaakolu St.** for continued debris removal air monitoring.

Station 11, Station 13 and Station 15 were set up around **333 Komo Mai St.** and **285 Komo Mai St.** for continued debris removal air monitoring.

Weather Station 7 and Station 8 were set up around **469 Ilikahi St.** and **387 Kamano Pl.** for continued debris removal air monitoring.

Station 14 was set up around the **Vessel Yard.**

Station Data:

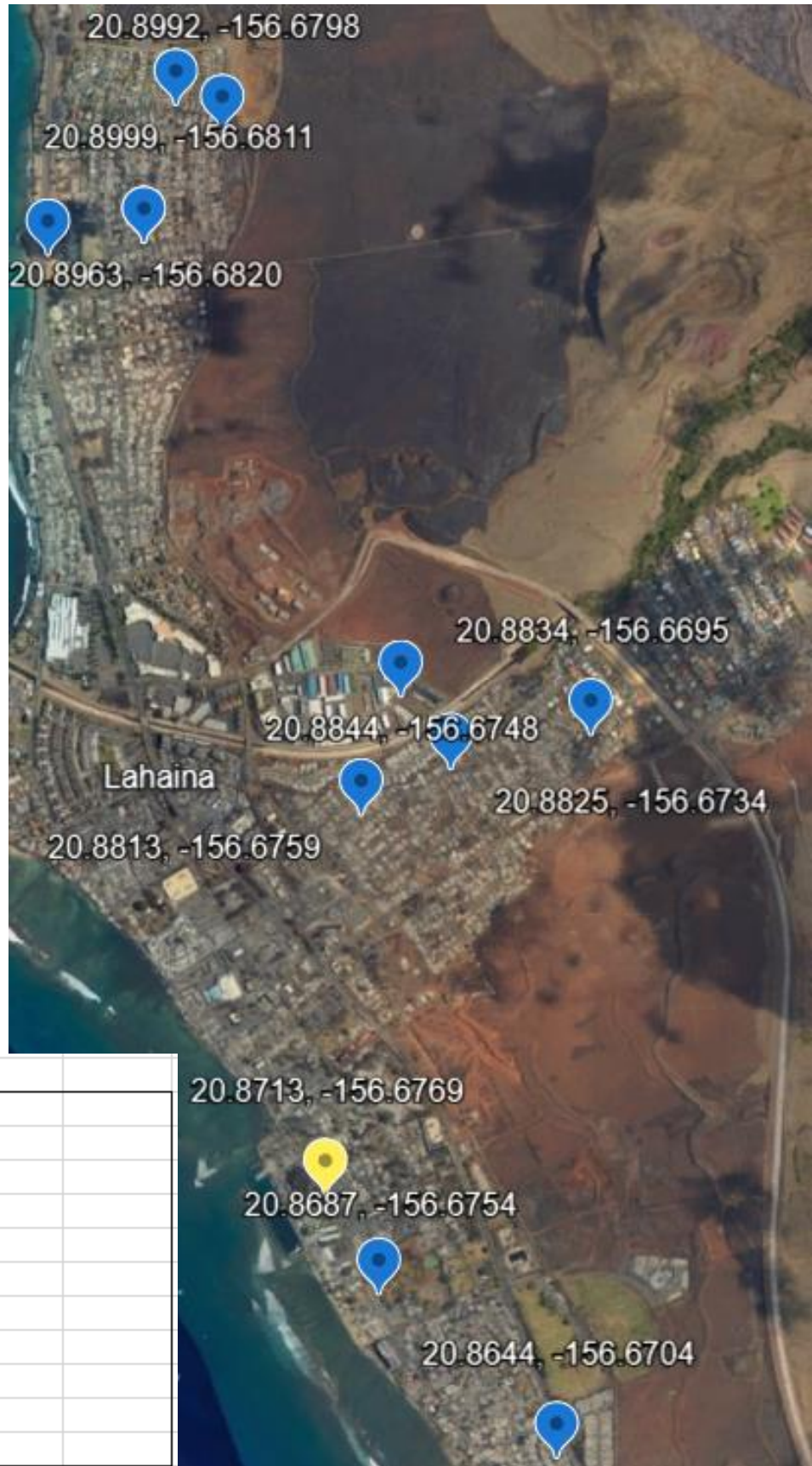
Station 14 reported negative values from 10:37-12:16

- Debris removal:

		Envizor-2	Envizor-3	Envizor-4	Envizor-5	Envizor-6	Envizor-7	Envizor-8	Envizor-11	Envizor-12	Envizor-13	Envizor-15	Exposure Limit	Action Limit
PM 2.5	Avg, ug/M3	2.30	12.08	4.62	3.12	4.52	5.75	6.57	7.18	9.67	7.81	7.00	70	35
PM 10	Avg, ug/M3	5.45	14.2	6.7	3.74	6.06	6.46	6.57	7.32	11.78	8.26	7.82	300	150

- Vessel Yard:

		Envizor-14	Exposure Limit	Action Limit
PM 2.5	Avg, ug/M3	8.30	70	35
PM 10	Avg, ug/M3	11.32	300	150



Debris Removal	
Envizor-2	20.8992, -156.6798
Envizor-3/SR	20.8960, -156.6847
Envizor-4/SR	20.8999, -156.6811
Envizor-5/ SR	20.8834, -156.6695
Envizor-6	20.8963, -156.6820
Envizor-7	20.8687, -156.6754
Envizor-8	20.8644, -156.6704
Envizor-11	20.8825, -156.6734
Envizor-12	20.8963, -156.6820
Envizor-13	20.8844, -156.6748
Envizor-15	20.8813, -156.6759
Vessel Yard	
Envizor-14	20.8713, -156.6769



Daily Dust Monitoring Report: January 29, 2024

Lahaina Debris Removal Operation

Summary:

No exceedances were recorded.

The ECC field staff and field crews continued to follow the prescribed methods of dust suppression and notification procedures.

The crews continue to use water for dust suppression all day.

Station Location Summary:

Station 4+ Sensitive Receptor, Weather Station 2, and Station 3+ Sensitive Receptor were set up around **1625 AA St. and 1627 Ainakea Rd.** for continued debris removal air monitoring.

Station 4+ Sensitive Receptor, Weather Station 2, Station 3+ Sensitive Receptor, and Station 11 were set up around **170 Malanai St.** for continued debris removal air monitoring.

Station 2 and Station 11 were set up around **180 Wahikuli Rd.** for continued debris removal air monitoring.

Station 15+ Sensitive receptor and Station 14 were set up around **571 Kaakolu St.** for continued debris removal air monitoring.

Station 14, Station 5, and Station 13 were set up around **349 Komo Mai St.** and **301 Komo Mai St.** for continued debris removal air monitoring.

Weather Station 7 and Station 8 were set up around **489 Ilikahi St.** and **436 Wainee St.** for continued debris removal air monitoring.

Station 9 was set up around the **Vessel yard.**

Station Data:

- Debris removal:

		Envizor-2	Envizor-3	Envizor- 4	Envizor 5	Envizor-7	Envizor-8	Envizor-11	Envizor-13	Envizor-14	Envizor-15	Exposure Limit	Action Limit
PM 2.5	Avg, ug/M3	7.01	20.66	9.45	9.41	12.39	17.59	15.20	8.81	7.14	9.23	70	35
PM 10	Avg, ug/M3	14.66	22.5	14.4	10.79	15.01	18.66	23.72	9.56	9.03	10.33	300	150

- Vessel Yard:

		Envizor-9	Exposure Limit	Action Limit
PM 2.5	Avg, ug/M3	17.80	70	35
PM 10	Avg, ug/M3	18.98	300	150



Debris Removal	
Envizor-2	20.8993, -156.6797
Envizor-3/ SR	20.8989, -156.6831
Envizor-4/ SR	20.8998, -156.6811
Envizor-5	20.8844, -156.6749
Envizor-7	20.8687, -156.6756
Envizor-8	20.8633, -156.6702
Envizor-11	20.8941, -156.6811
Envizor-13	20.8817, -156.6756
Envizor-14	20.8819, -156.6732
Envizor-15/ SR	20.8833, -156.6695
Vessel Yard	
Envizor-9	20.8714, -156.6770



Daily Dust Monitoring Report: January 30, 2024

Lahaina Debris Removal Operation

Summary:

The ECC field staff and field crews continued to follow the prescribed methods of dust suppression and notification procedures.

The crews continue to use water for dust suppression all day.

No exceedances were recorded.

Station Location Summary:

Station 4+ Sensitive Receptor, Weather Station 2, and Station 3+ Sensitive Receptor were set up around **1625 AA St. and 1585 Ainakea Rd.** for continued debris removal air monitoring.

Station 4+ Sensitive Receptor, Weather Station 2, Station 3+ Sensitive Receptor, and Station 11 were set up around **170 Malanai St.** for continued debris removal air monitoring.

Station 3+ Sensitive Receptor and Station 11 were set up around **180 Wahikuli Rd.** for continued debris removal air monitoring.

Station 14+ Sensitive receptor and Station 5 were set up around **571 Kaakolu St.** for continued debris removal air monitoring.

Station 15, Station 5, and Station 13 were set up around **349 Komo Mai St.** and **309 Komo Mai St.** for continued debris removal air monitoring.

Weather Station 7 and Station 8 were set up around **493 Ilikahi St.** and **464 Wainee St.** for continued debris removal air monitoring.

Station 9 was set up around the **Vessel yard.**

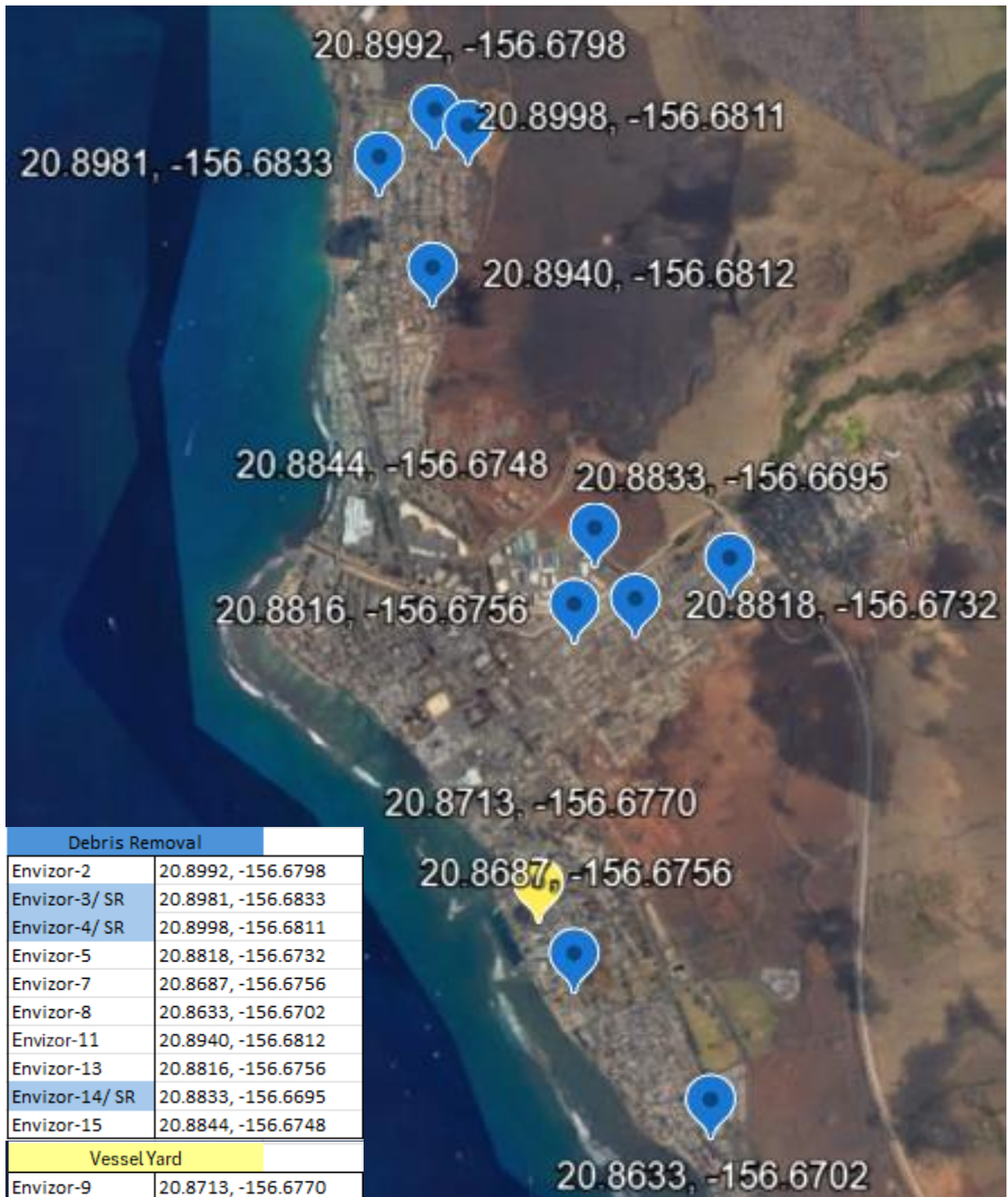
Station Data:

- Debris removal:

		Envizor-2	Envizor-3	Envizor-4	Envizor-5	Envizor-7	Envizor-8	Envizor-11	Envizor-13	Envizor-14	Envizor-15	Exposure Limit	Action Limit
PM 2.5	Avg, ug/M3	1.12	13.50	2.29	3.34	3.29	8.37	3.93	5.37	2.26	6.45	70	35
PM 10	Avg, ug/M3	2.10	14.7	3.9	4.59	4.29	9.68	4.72	6.12	3.84	8.69	300	150

- Vessel Yard:

		Envizor-9	Exposure Limit	Action Limit
PM 2.5	Avg, ug/M3	8.59	70	35
PM 10	Avg, ug/M3	9.34	300	150





Daily Dust Monitoring Report: January 31, 2024

Lahaina Debris Removal Operation

Summary:

The ECC field staff and field crews continued to follow the prescribed methods of dust suppression and notification procedures.

The crews continue to use water for dust suppression all day.

No exceedances occurred

Station Location Summary:

Station 4+ Sensitive Receptor, Weather Station 2, and Station 3+ Sensitive Receptor were set up around **1675 AA St. and 1585 Ainakea Rd.** for continued debris removal air monitoring.

Station 11 was set up upwind of **1675 AA St.** after Station 3 reported high PM-2.5 values.

Station 3 reported some detections above the action limits, but less than the exceedance level. The AMT deployed to the property, assessed the job site conditions, and determined the crew was doing everything they had been directed to do in to minimize noted the offsite migration of dust/silica. The crew was breaking up concrete, and had applied water as previously directed. The ECC site supervisor was called on site, determined the standard operations procedures were not adequate for the work being performed, and instructed the crew to install additional barrier fencing. No other issues were observed after the installation.

Station 4+ Sensitive Receptor, Weather Station 2, Station 3+ Sensitive Receptor, and Station 10 were set up around **170 Malanai St.** for continued debris removal air monitoring.

Station 4+ Sensitive Receptor and Station 10 were set up around **180 Wahikuli Rd.** for continued debris removal air monitoring.

Station 14+ Sensitive receptor and Station 5 were set up around **571 Kaakolu St.** for continued debris removal air monitoring.

Station 15, Station 5, and Station 13 were set up around **349 Komo Mai St.** and **309 Komo Mai St.** for continued debris removal air monitoring.

Weather Station 7 and Station 9 were set up around **501 Ilikahi St.** and **476 Wainee St.** for continued debris removal air monitoring.

Station 9 was set up around the **Vessel yard.**

Station Data:

Station 3 reported values above the PM-2.5 action limit at 10:36,11:12,11:50, 13:36-13:38, 14:23, and 15:37. A dust screen was put up at 13:15.

Station 10 reported negative values from 10:06-10:51 and reported values about the PM-2.5 action limit from 9:50-9:56

- Debris removal:

		Envizor-2	Envizor-3	Envizor-4	Envizor-5	Envizor-7	Envizor-9	Envizor-10	Envizor-11	Envizor-13	Envizor-14	Envizor-15	Exposure Limit	Action Limit
PM 2.5	Avg, ug/M3	2.18	13.42	6.01	2.72	6.68	4.42	7.04	9.14	7.08	4.82	5.51	70	35
PM 10	Avg, ug/M3	4.88	20.0	10.9	3.90	7.99	5.47	10.19	12.18	7.74	8.42	7.17	300	150

- Vessel Yard:

		Envizor-8	Exposure Limit	Action Limit
PM 2.5	Avg, ug/M3	11.78	70	35
PM 10	Avg, ug/M3	13.52	300	150



Debris Removal	
Envizor-2	20.8992, -156.6798
Envizor-3/ SR	20.9000, -156.6812
Envizor-4/ SR	20.8982, -156.6834
Envizor-5	20.8819, -156.673
Envizor-7	20.8687, -156.6756
Envizor-9	20.8639, -156.6702
Envizor-10	20.8940, -156.6812
Envizor-11	20.8992, -156.6812
Envizor-13	20.8816, -156.6756
Envizor-14/ SR	20.8839, -156.6705
Envizor-15	20.8844, -156.6749
Vessel Yard	
Envizor-8	20.8714, -156.6770