

WHEN TREATING THE MOST CHALLENGING CASES YOU'LL EVER FACE, **YOU NEED:**

Competence. Confidence. Clarity.

Join the 6th Annual Summit: Suicide Safer Care in Clinical Practice

March 10–11, 2026

A two-day conference designed to strengthen confidence and competence in providing caring, evidence-based services to clients with suicide risk



Crisis-Ready Your Practice

Get up to date on the latest insights affecting suicide care, including technology, substance use, self-care, and lethal-means counseling to ensure your practice is crisis-ready.



The Clinical Showdown

Developers of leading evidence-based suicide theories and interventions debate the relative strengths of their models as applied to real-life clinical cases (DBT, CT-SP, ABFT, DBT-A, IPT-A, ASSIP, BCBT, CAMS).



Suicide Prevention Royalty

Learn directly from leading experts, researchers, and innovators in the field of suicidology.

GAIN IMMEDIATE CLINICAL UTILITY.

Tuesday, March 10 and Wednesday, March 11, 2026

1:00 p.m.–5:00 p.m. EDT

10:00 a.m.–2:00 p.m. PDT

Live virtual conference on Zoom

Registration with CE Credits: \$149

General Registration: \$99

REGISTER NOW

wellnessinstitute.org/summit



Thomas Joiner, PhD



David Rudd, PhD



Jill Harkavy-Friedman, PhD



Craig Bryan, PsyD, ABPP



Kate Comtois, PhD, MPH



Alec Miller, PsyD



Emmy Betz, M.D., MPH



Guy Diamond, PhD



Stacey Freedenthal, PhD



Jonathan Singer, PhD, LCSW



Anja Gysin-Maillart, PhD



Raymond Tucker, PhD



Kelly Green, PhD



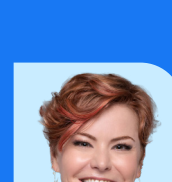
Anat Brunstein-Klomek, PhD



John Torous, M.D., MBI



Jeffrey Barnett, PhD



Jennifer Hartstein, PsyD



Arwen Podesta, M.D.



CE Credits: **8.0**

The Wellness Institute is approved by the American Psychological Association (APA) to sponsor continuing education for psychologists. TWI maintains responsibility for this program and its content. For this program, intermediate, and advanced professionals.

This program is approved by the National Association of Social Workers (Approval #886875714-2321) for 8 continuing education contact hours.

The New York State Education Department recognizes the Wellness Institute as an approved provider of continuing education for licensed psychologists, LMSWs, LCSWs, LMHCs and LMFTs.

Social workers, LMFTs, and LPCs/LMHCs in many states can satisfy their continuing education requirements at this event.