

HAWAII VACCINES FOR CHILDREN NEWSLETTER

VFC Updates - ESS - Community Vaccination Program - HIR/Registry - Help Box - QA Education

Fall Edition | November 2024

FALL VFC UPDATES

Holiday Shipping Cut-Off Dates

- > Providers are strongly encouraged to submit VFC vaccines orders early to ensure receipt before limited delivery periods during the fall/winter holidays.
- > Providers are also encouraged to maintain a minimum of 4 weeks of inventory to prevent vaccine outages if orders are delayed due to weather and/or carrier interruptions.
- > To avoid missed vaccine deliveries, please notify the Hawaii VFC program if your office will be closed for extended periods during the holidays and/or if vaccine delivery days/times will change.

November 2024

Please be advised that orders submitted after 11/15/24 may not ship until December 2024.

VFC vaccine delivery will be restricted/unavailable during the following period in November:

November 25 – 29, 2024

December 2024/January 2025

Please be advised that orders submitted after 12/9/24, may not ship until January 2025.

VFC vaccine delivery will be restricted/unavailable during the following period in December/January:

December 23, 2024 – January 3, 2025



**Although regular VFC vaccine shipping schedules are expected to resume on 1/6/25, order backlogs at vaccine distribution centers generally occur over the holidays so shipment delays could extend well into January. Please plan accordingly.*

VFC Nirsevimab (Beyfortus™) Monoclonal Antibody



The Hawaii VFC Program opened ordering for 50mg doses to all Hawaii VFC providers on 10/24/24.

| NDC | Product/Presentation | Weight Indication | NOTES |
|---------------|---|--------------------------------------|--|
| 49281-0575-15 | Nirsevimab 50mg Beyfortus™, 50mg, single dose syringe, 5 syringes/carton | 50mg for VFC eligible infants <5kg | Effective 10/24/24, available to ALL VFC providers. For Hawaii-specific administration guidance, please see: Med-Advisory-RSV-mAb-and-Vaccine-12_27_2023.pdf and Medical-Advisory-Infant-RSV-Monoclonal-Antibody-for-Year-Round-RSV-Prevention-in-Infants-in-Hawaii-082324.pdf |
| 49281-0574-15 | Nirsevimab 100mg Beyfortus™, 100mg, single dose syringe, 5 syringes/carton | 100mg for VFC eligible infants ≥ 5kg | Available to all VFC providers. For Hawaii-specific administration guidance, please see: Med-Advisory-RSV-mAb-and-Vaccine-12_27_2023.pdf and Medical-Advisory-Infant-RSV-Monoclonal-Antibody-for-Year-Round-RSV-Prevention-in-Infants-in-Hawaii-082324.pdf |

VFC Nirsevimab (Beyfortus™) Orders

- ~ VFC Providers are **REQUIRED** to order and administer all ACIP-recommended immunizations, including nirsevimab (Beyfortus™), to their indicated VFC-eligible patient population.
- ~ Due to the CDC allocation system (there is a cap on statewide ordering), VFC providers are encouraged to place multiple small orders for nirsevimab (Beyfortus™) products as it may not be possible to fulfill requests for large amounts of inventory up front.
- ~ Note, orders for VFC nirsevimab (Beyfortus™) **must be placed via the attached VFC Nirsevimab Monoclonal Antibody Order Form (10/23/24).**

2024-25 Influenza and COVID-19 Vaccines



MODERNA

NEW for 2024-25: Moderna 6m-11y and 12y+ vaccines may now be stored at refrigerated temperatures (2°C - 8°C) for up to 60 days (previous BUD was 30 days). See: [2024-2025 Formula Moderna COVID-19 Vaccine At A Glance for more information.](#)

PFIZER

Providers have reported that it is difficult to distinguish between Pfizer commercial (private stock) shipments and VFC shipments. CDC is working with Pfizer to implement improvements to packing slips and labeling. In the meantime, to distinguish between VFC and private stock shipments, look at the packing slip and/or label printed on the inside flap of the shipment

→ All VFC shipment “Customer PO” numbers start with “4” and the “Sold To” address contains information for the Centers for Disease Control and Prevention (CDC): “CDC/FMO – Vaccines” with an Atlanta, GA address.

| SHIP FROM / SOLD BY: PFIZER INC. 10501 60th Ave Pleasant Prairie, WI 53158 | | SHIP TO: [REDACTED] | CUSTOMER 1000002050 | CUSTOMER PO 4002914665 | PO DATE 09/13/2024 |
|--|--|------------------------|------------------------|---------------------------|-----------------------|
| SOLD TO: CDC/FMO – VACCINES MAIL STOP 006 1500 CLIFTON RD NE ATLANTA GA 30329-4010 | | | | | |
| LOCATION | ITEM | QUANTITY | NDC NUMBER | LOT NUMBER | EXPIRY DATE |
| ULP | F000064012 | 2 EA | 59267-4426-2 | LN6739 | 31-JAN-202 |
| ULP006 | PF07302048 0.033mg/ml 10x.48ml VL AND US | | | | |


2 EA




REMINDER: VFC Providers are required to order and administer all ACIP-recommended vaccines including Influenza and COVID-19. 2024-25 VFC Influenza and COVID-19 vaccines remain available for order. If your office needs additional supply, please feel free to place an order via the attached 2024-25 VFC Influenza Vaccine and 2024-25 VFC COVID-19 Vaccine order forms.

2025 VFC Enrollment

The Centers for Disease Control and Prevention (CDC) requires all Vaccines for Children (VFC) providers to update their VFC provider Enrollment and Profile forms, ensure designated Vaccine Coordinators and Back-Up Coordinators complete VFC training requirements, and review their VFC Vaccine Management Plans annually. VFC Enrollment packets will be distributed via USPS during the week of 11/11/24. Please be on the lookout for your packet and be sure to complete the four-step VFC reenrollment process:



Step 1: Complete VFC Enrollment/Profile forms and ensure it is signed and dated.



Step 2: Ensure your VFC Vaccine Coordinator and Back-Up Coordinator complete the two required CDC “You Call the Shots” modules indicated below. Completion of the modules is also recommended for anyone in your office who handles, prepares, or administers VFC vaccine.
***Please note: Submission of training transcripts instead of individual certificates is required.**


A. Vaccines For Children Program: <https://www.train.org/hawaii/course/1115622/details>

B. Vaccine Storage and Handling: <https://www.train.org/hawaii/course/1115621/details>


*For instructions on obtaining your transcripts, please see this link: [How to Obtain Your Transcripts in CDC TRAIN](#).

*See Home - [CDC TRAIN - an affiliate of the TRAIN Learning Network powered by the Public Health Foundation](#) to obtain CE credit for the training modules.

*For helpful information on navigating CDC Train, see: [TRAIN Tutorials](#) and [CDC TRAIN for VFC](#).



Step 3: Complete the annual review/update of your office’s VFC Vaccine Management Plan. Be sure to document the “Annual Review Date” as well as the name, signature, and credentials of the Vaccine Coordinator or Back-Up Coordinator who completed the review on the first page of your VFC Vaccine Management Plan. See: [VFC Vaccine Management Plan Template](#) for the current template.



Step 4: By January 31, 2025, submit completed VFC Enrollment/Profile forms (Step 1), CDC Train VFC Training Module Transcripts (Step 2), and your entire reviewed VFC Vaccine Management Plan (Step 3) by fax to (808) 586-8302, email to HawaiiVFC@doh.hawaii.gov, or mail to:



Hawaii Department of Health
Attention: Vaccines for Children Program
P.O. Box 3378
Honolulu, HI 96801



All documentation must be received for VFC reenrollment to be complete. If VFC re-enrollment requirements are not completed by **January 31, 2025**, your 2025 VFC vaccine orders will not be processed. Don’t risk suspension of your VFC vaccine ordering privileges – submit your reenrollment documents today!

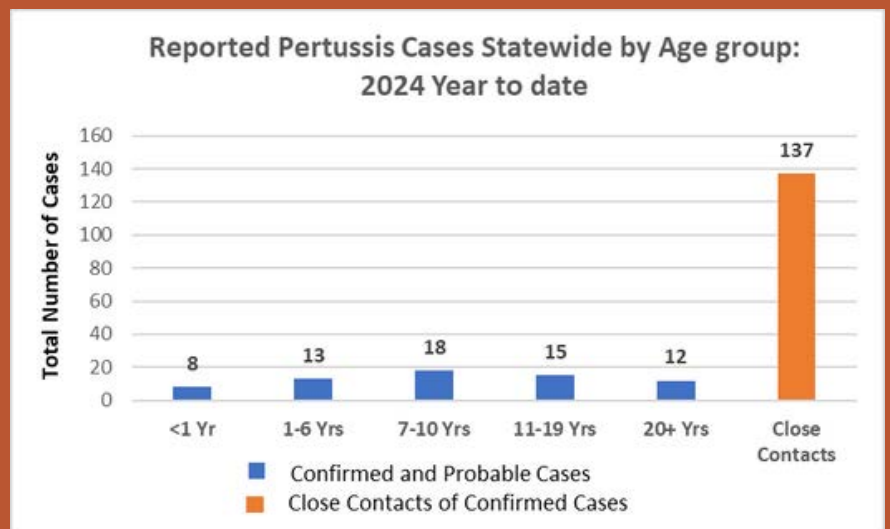
EPIDEMIOLOGY & SURVEILLANCE SECTION

Pertussis Cases Continue to Rise

Since our last report in the VFC Summer 2024 Newsletter, the number of pertussis cases has continued to rise both nationwide and statewide in Hawaii. As of October 26, 2024, reported pertussis cases in the United States has increased more than fivefold, with 20,284 cases compared to just 4,589 cases at the same time in 2023 [<https://wonder.cdc.gov/nndss/static/2024/4/43/2024-43-table990.html>].

As of November 1, 2024, the Hawaii Department of Health (HDOH) has reported 66 cases of pertussis, compared to just 3 cases at the same time in 2023.

The pertussis incidence by Age Group reported to HDOH in 2024 is as follows:



Infants under one year old are at greatest risk for serious disease and death because their immune systems are still developing. Treatment for pertussis is easily available and highly encouraged. If started early, it can help reduce severity, duration, and the risk of complications, particularly in infants.

The Center for Disease Control and prevention (CDC) supports providing antimicrobial postexposure prophylaxis (PEP) especially to:

- Household contacts of a pertussis case.
PEP should be provided to all household contacts of a pertussis case within 21 days of onset in the index patient. Within the families, secondary attack rates are high, even when household contacts are up to date with pertussis vaccinations.
- Other close contacts of a pertussis case including people at high risk of developing severe pertussis infection regardless of age and immunization status:
 - Pregnant women in their third trimester who can be a source of pertussis to their newborn infant.
 - Infants under 12 months of age in the settings of neonatal intensive care units, childcare settings, and maternity wards.





The following guideline of pertussis antimicrobial therapy and PEP is provided by American Academy of Pediatrics.

Recommended Treatment and Postexposure Prophylaxis, by Age Group[‡]

| Age group | Azithromycin | Erythromycin | Clarithromycin | Alternate agent: TMP-SMX |
|--------------------------------|--|---|--|---|
| Younger than 1 month | 10 mg/kg/day as a single dose daily for 5 days ^{§, **} | 40 mg/kg/day in 4 divided doses for 14 days | Not recommended | Contraindicated at younger than 2 months |
| 1 through 5 months | 10 mg/kg/day as a single dose daily for 5 days [§] | 40 mg/kg/day in 4 divided doses for 14 days | 15 mg/kg/day in 2 divided doses for 7 days | 2 months or older: TMP, 8 mg/kg/day; SMX, 40 mg/kg/day in 2 doses for 14 days |
| 6 months or older and children | 10 mg/kg as a single dose on day 1 (maximum 500 mg), then 5 mg/kg per day as a single dose on days 2 through 5 (maximum 250 mg/day) ^{§, ††} | 40 mg/kg/day in 4 divided doses for 7-14 days (maximum 1-2 g per day) | 15 mg/kg/day in 2 divided doses for 7 days (maximum 1 g/day) | 2 months or older: TMP, 8 mg/kg/day; SMX, 40 mg/kg/day in 2 doses for 14 days |
| Adolescents and adults | 500 mg as a single dose on day 1, then 250 mg as a single dose on days 2 through 5 ^{§, ††} | 2g/day in 4 divided for 7-14 days | 1g/day in 2 divided doses for 7 days | TMP 320 mg/day; SMX, 1600 mg/day in 2 divided doses for 14 days. |

Source: Red Book 2021-2024

[‡] Centers for Disease Control and Prevention. [Recommended antimicrobial agents for the treatment and postexposure prophylaxis of pertussis: 2005 CDC guidelines](#). MMWR Recomm Rep. 2005;54(RR-14):1–16

[§] Azithromycin should be used with caution in people with prolonged QT interval and certain proarrhythmic conditions.

^{**} Preferred macrolide for this age because of risk of idiopathic hypertrophic pyloric stenosis associated with erythromycin.

^{††} A 3-day course of azithromycin for PEP or treatment has not been validated and is not recommended.



SCHOOL-LOCATED FLU VACCINATION EFFORTS

Stop Flu at School Pilot Program - *Kauai DHO Spotlight*

We are pleased to announce that Kauai's District Health Office (DHO) has shown a strong commitment to continuing the impactful legacy of the Stop Flu at School (SFAS) Program. This program aims to protect the health of Hawai'i's keiki, families, and kūpuna by reducing the spread of influenza through vaccination.

To date, the Kauai DHO has held 14 school-based vaccination clinics, administering over 1,000 doses across 14 participating schools. These clinics, which began in October, will continue through the end of November 2024, reaching communities across the island.

We're thrilled to partner with the Kauai District Health Office once again and look forward to a successful season with the SFAS Program.



call to
ACTION



Opportunity to Support School-Located Vaccinations Clinics

Partnerships between the DOH, Community Vaccination Providers, and other stakeholders make it possible for school-based vaccination clinics to remain vital tools for increasing vaccine equity and building vaccine confidence in both school and community settings. As we continue to plan and host these clinics for staff, students, and their communities during the 2024–2025 school year, the DOH is actively seeking Community Vaccination Providers to help lead these efforts. If you are interested in partnering to conduct a community or school-based vaccination clinic, please reach out to our DOH Community Vaccination Coordinator, Esera Vegas, by email or phone

ALOHA KĀKOU!

We are excited to welcome Esera Vegas to the DOH Immunization Branch as our new Community Vaccination Program Specialist. Esera joined our team on Monday, October 21, and will be supporting our community vaccination efforts. Raised on the Windward Side of 'Oahu, Esera brings a rich blend of Native Hawaiian, Puerto Rican, and Samoan heritage, as well as a background in Cell Biology and Biological Sciences. His diverse experience includes legislative research at the Hawai'i State Senate, teaching with the DOE, and volunteering at Angkor Wat Children's Hospital in Siem Reap, Cambodia.

Fun fact: Esera is passionate about soccer and even appeared in the soccer film *Next Goal Wins*, released in theaters last November! He's also deeply committed to macro social work, environmental causes, food, and travel. Please feel free to reach out to Esera for any community vaccination event needs—he's eager to connect and contribute his skills and enthusiasm to our mission.

Email: Esera.Vegas@doh.hawaii.gov **Office:** (808) 586-8350

Introducing
Esera Vegas



HIR/REGISTRY UPDATE

DOH Hawaii Immunization Registry (HIR) transitioning to new system – Hawaii State Immunization System (HiSIS)

Aloha Hawaii Immunization Registry Providers,

By June 30, 2025, the Hawaii Immunization Information System currently known as HIR will move from our current vendor to Envision’s cloud-based, vendor-hosted environment. The new system will be called “Hawaii State Immunization System” (HiSIS). As part of this project, processes will change including:

- ▶ If you are using an EMR/EHR vendor to submit records electronically, the current system will sunset, and all processes will be migrated to the new vendor HL7 engine.
 - This will require your vendor to change where they send data to the new IIS.
 - There may be changes to the existing message format.
 - There may be changes in practice workflows that require additional training from your EHR.

- ▶ If you are using the User Interface (UI), logging in to Hawaii State Immunization System (HiSIS) to enter records manually or upload a HL7 patient immunization record file,
 - This process will require new login credentials for the user
 - There will be a new link to the IIS portal page

- ▶ Training on the use and functions of the new system will be provided. More information will be forthcoming.

The new HiSIS Program Team is currently evaluating the scope of transitioning all existing interfaces to the new HL7 engine, which includes an analysis of how easily current interfaces conform to the new HL7 engine requirements. From this information, we will build a process and timeline for triaging all current electronic submitters for re-onboarding.

In the next few weeks, the HiSIS Interoperability Team will send out additional communications to you and your vendor to discuss next steps and timelines. Please reach out to your EHR vendor as soon as possible to obtain process requirements to initiate the transition request.

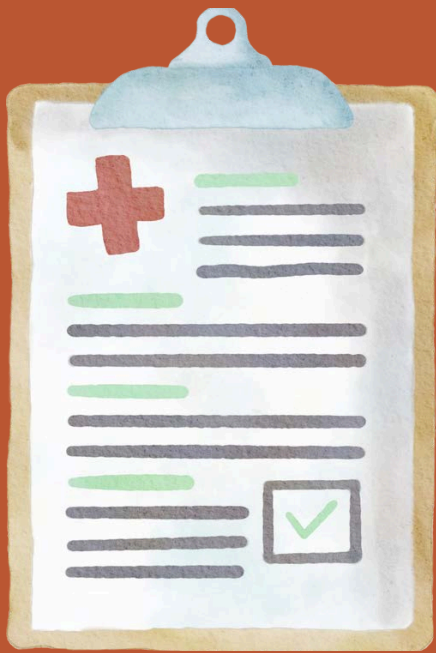
Each EHR vendor will receive a survey to help us better understand each vendor’s interface functionality, features, and engagement process/timeline.

Please feel free to contact the Registry Helpdesk with any immediate questions at

DOH.HiSIShelp@doh.hawaii.gov



HELP BOX



Are you looking to order a product, but do not see it listed in the Hawaii Immunization Registry? We are here to help!

Here are some tips for “Special Order” immunizations:

1. The three “Special Order” VFC products are: 2024-25 COVID-19 vaccines, Nirsevimab (Beyfortus®) and 2024-25 Influenza vaccines.
2. Each “Special Order” product requires a separate PDF VFC Order Form.
3. If you need to request an order form, please contact us by sending a detailed e-mail request to hawaiivfc@doh.hawaii.gov.

Note: For COVID-19 and influenza vaccines, please ensure that you use the current season’s (2024-25) order form as available products and associated NDCs change yearly.

Here is additional information regarding Vaccine Ordering:

- <https://health.hawaii.gov/docd/files/2024/01/Hawaii-VFC-Vaccine-Order-and-Delivery-Guide.pdf>
- <https://health.hawaii.gov/docd/for-healthcare-providers/nirsevimab-updates/>
- <https://health.hawaii.gov/docd/for-healthcare-providers/2024-25-influenza-season/>

If you have any questions, please call (808) 586-8300 (Oahu) or 1-800-933-4832 (toll-free).

Or, please send a detailed e-mail message to: hawaiivfc@doh.hawaii.gov

EDUCATION & TRAINING

Routine DDL Data Review

It’s a HDOH VFC Program requirement that all VFC providers routinely review their digital data logger (DDL) data at least twice per month. Frequent and routine review of DDL data allows the provider/staff to promptly respond to any temperature excursions, unit malfunctions or temperature monitor errors.

DDL data is the comprehensive dataset that displays the minimum, maximum and average temperatures logged by the monitor each day for at least one full month. The data also alerts you to any alarms that may have been triggered while you were in or out of office.

A quick response to any and all temperature excursions can limit the risk to product viability and prevent unnecessary loss due to spoilage. Most importantly, a prompt response can decrease the risk of having to re-immunize VFC patients who might’ve been immunized with nonviable products prior to excursion discovery. We want to ensure that only viable products are being administered to your VFC patient population.

Effective January 1, 2025, it will be a HDOH VFC Program Requirement to submit digital data logger (DDL) data with monthly temperature log submissions for all VFC storage units. Missing DDL data may result in vaccine order processing delays.

Hawaii Department of Health Immunization Branch VFC Program

Email: HawaiiVFC@doh.hawaii.gov

Telephone: 808-586-8300

Toll-Free for Neighbor Islands:
1-800-933-4832

Fax: 808-586-8302

Immunization Branch Chief
Ronald Balajadia, MS

VFC Program Coordinator
Heather Winfield-Smith, MSW

Contributors

Heather Winfield-Smith, MSW

Augustina Manuzak, MPH Ph.D

Marilyn Sandvig, MBA

Josephine Araki, RN

Loraine Lim, RN

Kealohi Corpus

Bridget Anthony

Esera Vegas

Melvin Reyes

