



DDD Waiver Provider

UPDATES

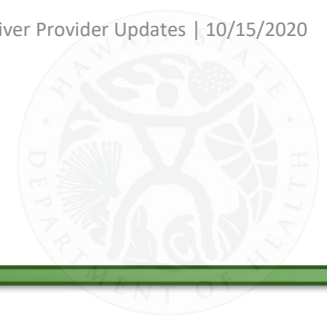
October 2020

Agenda

- I. State Fiscal Condition
- II. Appendix K Temporary Rate Adjustments
- III. Phased-In Approach to Reopening Day Services
- IV. Waiver Renewal Updates
- V. Systematic Check-Ins with Providers
- VI. Other Updates and Reminders
- VII. Questions and Answers



State Fiscal Condition/Budget



- Based on COR-
 - State projected a revenue decrease of over \$2.3 billion for the current biennium (FY20-21)
 - Revenue reductions will have a long-term impact.
- Program reviews conducted for all state agencies.
- Decisions will be integrated into FY22-23 Executive Biennium Budget
- Impact analysis has been provided as well as Biennium budget request.

Appendix K Temporary Rate Adjustments

- Purpose: To support a viable provider network in order to ensure that essential services are available
- Increases payment rates for select services provided between October 1, 2020 and February 28, 2021:
 - 12.5% for PAB and CLS-Individual
 - 25% for ADH, CLS-Group, and Individual Employment Supports- Job Development and Job Coaching

Phased-In Approach to Reopening Day Services

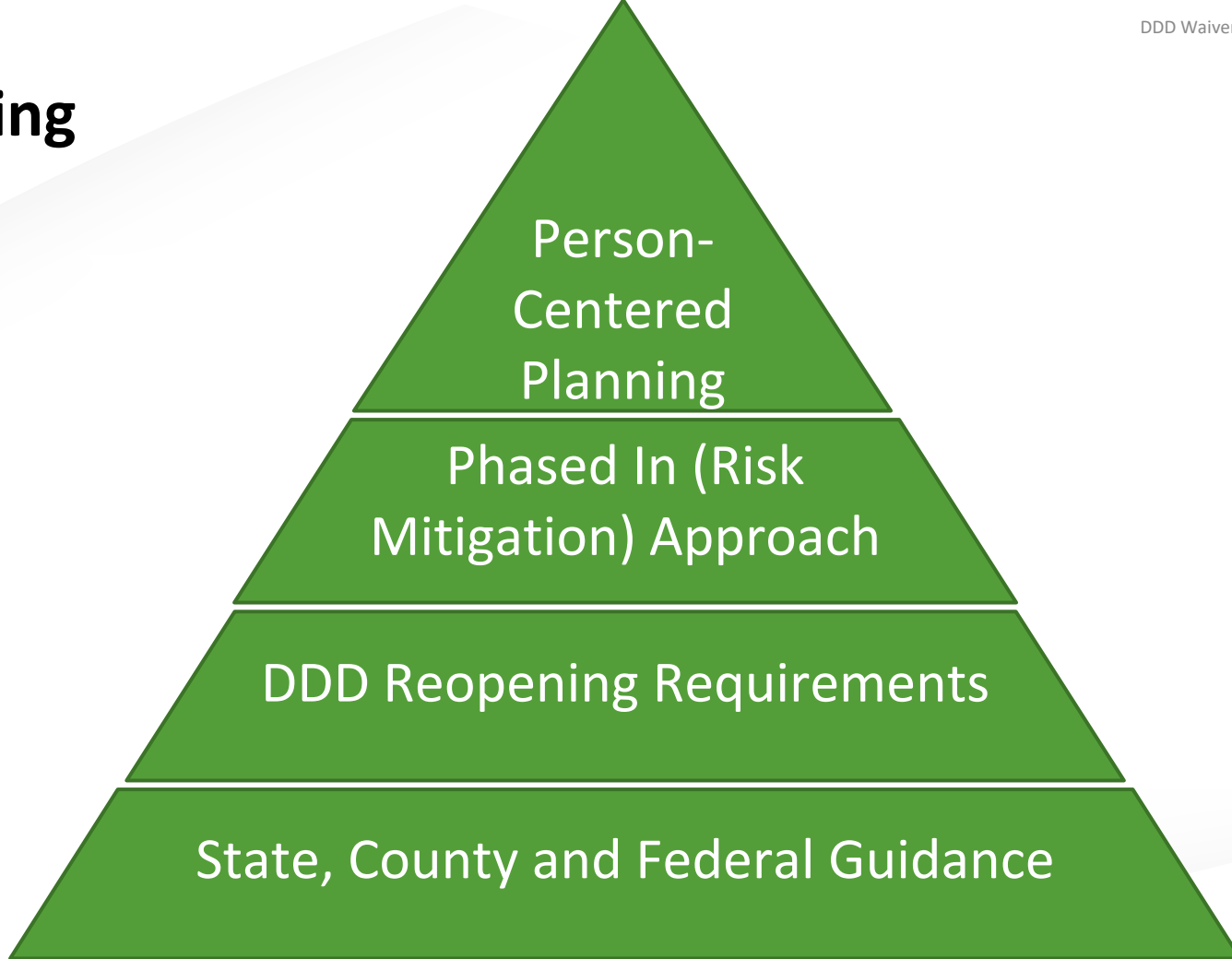
- Review policy
- Discuss current status
- Review requirements
- Discuss a phased in approach

DDD Reopening Policy

Programs that plan to reopen services need to:

1. Follow State, County and Federal guidance for reopening business/programs;
2. Meet DDD Reopening Requirements; and
3. Develop a Phased in Approach applying risk assessment criteria, conditions and safe practices.

DDD Reopening Policy Visual



Current Status of State Reopening

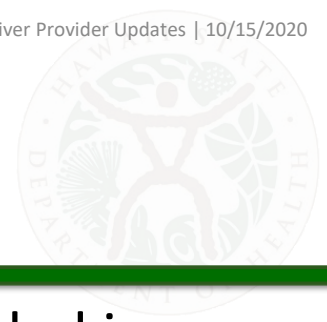
- Phase 2, Act with Care - Governor's Reopening Hawaii Strategy
- Tier 1 (9/24/2020) – Honolulu COVID-19 Recovery Framework (Case count 73, Test positivity 3.2%)
- Neighbor islands (*Kaua'i, Maui County and Hawai'i island*) should follow status from their specific counties

Note: Periodically monitor county orders and State guidance as phases and tiers can move back to previous levels at any time

Public Health Framework for Reopening

- 3 principles:
 1. Evaluation of environmental conditions
 2. Risk Stratification
 3. Phased Approach
- Conditions
 - Everyone follow Safe Practices
 - Following higher levels of Safety Precautions
 - Individuals at higher risk must continue to minimize time and contact outside the home





DDD Requirements for Reopening

In addition to State and county guidelines, all services provided in community and center-based settings are required to:

Requirement 1

- Have a DDD-accepted Provider Self-Assessment

Requirement 2

- Assess Health and Risk Criteria for each setting and participant, in partnership with DDD Case Managers

Requirement 3

- Integrate safe practices into services and settings as reflected in CDC and State guidance



Oahu and Neighbor Islands

Statewide:

CLS-Ind, Employment Services

May resume in all counties based on Governor's order and specific county orders, for those where it is determined they can participate safely.

O'ahu:

CLS-G, ADH

May start to phase in reopening when Honolulu County advances to Tier 2, and based on Governor orders; for those where it is determined they can participate safely.

Neighbor Islands:

CLS-G, ADH

May reopen on Kaua'i, Maui County and Hawai'i island as long as program adheres to county-specific orders, for those where it is determined they can participate safely.

IMPORTANT: All Must Meet DDD Reopening Requirements



“Wear a mask. I’m serious. That’s it. There’s no doubt that that works. Wear a mask and try to avoid congregate settings – a whole bunch of people together, some of whom don’t have masks, crowded, indoors, is really bad news.”

**Dr. Anthony Fauci (Director, NIAID) –
October 7, 2020**

Req 1: Accepted Self-Assessment

- June 19, 2020: Guidance provided by self-assessment
 - Self-Assessments must be submitted, reviewed and accepted by the DDD prior to the provider's planned reopening date
- **Emergency Preparedness**
 - **Transportation**
 - **Preventing the Spread of Infection**
 - **Person Centered Planning**
 - **Training and Support**
 - **Community-Based Services**

Req 2: Health and Safety Criteria

1. Participants > 65 years should not be in ADH programs at this time

2. Participants with any of the following conditions should not be in ADH programs at this time

- Cancer, Chronic kidney disease, COPD, Immunocompromised state from solid organ transplant, Obesity, Serious heart conditions, Sickle cell disease, Type 2 diabetes mellitus

3. Participants with any of the following conditions are likely not appropriate for ADH programs at this time

- Asthma (moderate-to-severe), Cerebrovascular disease, Cystic fibrosis, Hypertension, Immunocompromised state from blood or bone marrow transplant, immune deficiencies, HIV, use of corticosteroids, or use of other immune weakening medicines, Neurologic conditions such as dementia, Liver disease, Pregnancy, Pulmonary fibrosis, Smoking, Thalassemia, Type 1 diabetes mellitus

Req 2: Health and Safety Criteria (cont.)

Honolulu COVID-19 Recovery Framework

- Accommodate wearing face coverings at all times
- Physically distance between individuals from different households
- Limit the number of people per square foot
- Limit duration of exposure
- Limit amount of mixing of people from differing households and communities
- Limit amount of physical interactions of visitors/patrons
- Optimize ventilation (e.g. indoor vs outdoor, air exchange and filtration)
- Limit activities that are known to cause increased spread (e.g. singing, shouting, heavy breathing; loud environs that cause people to raise voice)
- Enforce restrictions and required mitigations measures

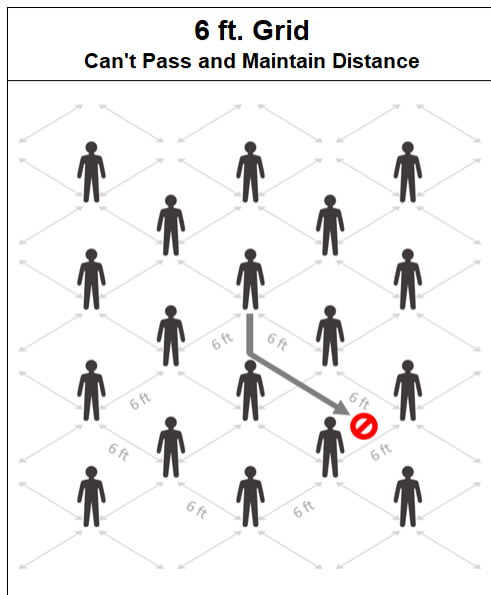


- Requirement 1
- Requirement 2
- Requirement 3

Req 3: Integrate Safe Practices

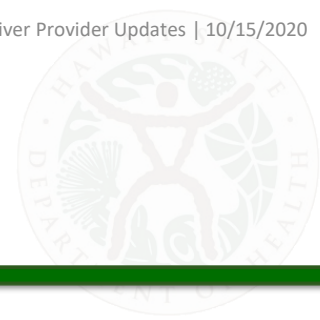
Safe Practices

- Social Distance
- Avoid crowded settings
- Wear face coverings
- Clean and disinfect
- Improve air circulation



<https://covid19.colorado.gov/safer-at-home/social-distancing-calculator-for-indoor-and-outdoor-events>





The Phased In Approach

Assess

- ✓ County and state conditions
- ✓ Health and other risk considerations
- ✓ Agency readiness (individualized)
- ✓ Participant readiness (individualized)

Recommendations

- ✓ Develop a plan based on each phase/tier
- ✓ Delay high-risk participant involvement
- ✓ Have a person-centered approach
- ✓ Periodically reevaluate and optimize



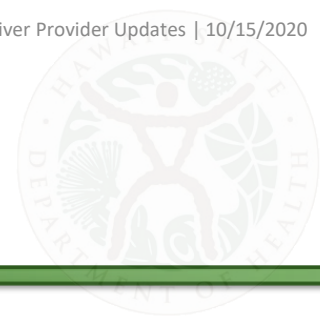
Waiver Renewal Updates

- Currently writing the proposed Waiver application
- Public Comment period: 12/1/2020 – 1/10/2021
- Waiver to be submitted to CMS on 2/28/2021
- Updated Waiver Standards will be complete on 6/1/2021
- Registration on website: <https://health.hawaii.gov/ddd>

Date & Time	10/26/2020 6:30- 8:00pm	10/27/2020 10:00- 11:30am	10/28/2020 10:00- 11:30am	10/28/2020 6:30- 8:00pm	10/29/2020 3:30- 5:00pm	11/9/2020 10:00- 11:30am*
Island	Oahu	Neighbor Islands	Oahu	Neighbor Islands	All Islands	All Islands

Commitment to Systemic Check-Ins with Providers

- Development of Community of Practice type discussions
- Planning for the long-term affects of the pandemic
- Telehealth best practices
- Other opportunities for collaboration



Updates & Reminders (1 of 2)

Provider Relief Funds Phase 3

- Deadline: 11/6/2020
- Apply as soon as possible to expedite calculation and distribution of payments
- Google: Provider Relief Funds phase 3

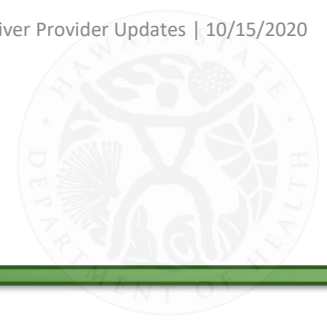
Electronic Visit Verification (EVV)

- For PAB, Chore, Respite, and PDN
- Sandata training available now
- Go Live Deadline: 12/30/2020
- Public Town Hall, hosted by MQD, on 10/20/20 @ 3 PM

Laptops

- DHS distributed based on survey conducted
- Use is for conducting telehealth during the public health emergency





Updates & Reminders (2 of 2)

Quarterly Reports

- Transmittal memo
- Continue to submit quarterly reports

Final Rule Reset

- CMS released a final rule in January 2014
- New HCBS setting requirements
- In 2015-2016 assessed initial provider compliance
- 2020 Reset – will work with providers to reach full compliance

Provider Portal

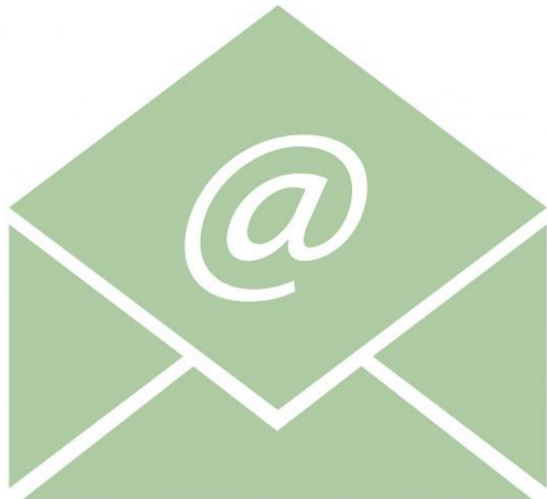
- DDD will introduce a Provider Portal
- Will have different features, including an IP and quarterly report template
- Trainings will be rolled out to providers and DDD staff during this fiscal year

New Monitoring Tool

- Align quality improvement activities with internal monitoring to strengthen practices
- Opportunity to redesign provider monitoring, with stakeholder collaboration



Thank You



Additional Questions?

Please email -

doh.dddcrb@doh.hawaii.gov