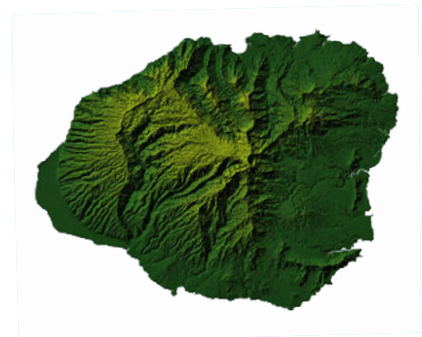


Hawai'i Traveler Tips



*Aloha! Welcome to the
Island of
Kaua'i*

This guide serves to assist travelers with disabilities and health conditions by providing information about the accessibility of Hawai'i's airports and transportation systems. Also included is a list of medical supply companies. Please make direct contact with any of the businesses or services in this guide to obtain additional information. This guide is also available on our web site at <http://health.hawaii.gov/dcab>. Information contained in this guide does not serve as an endorsement for these or other businesses or services, and is intended only as a resource.



Līhu'e Airport

The State of Hawai'i, Department of Transportation provides an Access Guide for passengers with disabilities on services (such as animal quarantine, ground transportation, motorized wheelchairs, porter services, accessible restrooms, TTYs) at the Līhu'e Airport. Visual Display Units are located throughout the Līhu'e Airport displaying gate departure times and other flight information. Obtain this Access Guide for the Līhu'e Airport at www.airports.hawaii.gov/lih/services-amenities/persons-with-disabilities. For more information, contact the Visitor Information Program at **(808) 241-3919**.

Air Travelers With Disabilities

The U.S. Department of Transportation (DOT) offers the following assistance and information for travelers with disabilities.

- Individuals who experience disability-related air travel problems, would like general information, or have questions on the rights of travelers with disabilities can call the DOT hotline at **(800) 778-4838 (V)** and **(800) 455-9880 (TTY)**. Information about the Air Carrier Access Act, which prohibits discrimination on the basis of disabilities in air travel and to file a complaint can be found at <https://airconsumer.dot.gov/escomplaint/ConsumerForm.cfm>.

The U.S. Transportation Security Administration, which is responsible for passenger airport security screenings, can provide information for travelers with disabilities and medical conditions in preparing for airport screenings at "Travelers with Disabilities and Medical Conditions" at **(855) 787-2227** or at <https://www.tsa.gov/travel/special-procedures>.

Hawai'i Traveler Tips

Adapted Vehicle Rentals

With advance notice, car rental companies will install hand controls, provide accessible transportation from the airport or airport car rental booth to the vehicle pickup point, or deliver the vehicle to the airport terminal.

Alamo Rent-A-Car	(800) 651-1223 (Toll free)
Avis Rent-A-Car	(800) 962-1434 (Toll free)
Budget Rent-A-Car	(888) 221-1203 (Toll free)
Dollar Rent-A-Car	(800) 800-4000 (Toll free)
Hertz Rent-A-Car	(800) 654-3131 (Toll free)
National Rent-A-Car	(888) 273-5262 (Toll free)

Accessible Van Rentals

The following businesses rent wheelchair accessible vans. Call in advance to make reservations, arrange for pickup of the van, and if needed have hand controls installed in the van.

Wheelchair Getaways of Hawai'i
(800) 536-5518 (Toll free)

Web site: www.wheelchairgetaways.com

Wheeler Van Rentals of Hawai'i LLC
(877) 735-6365 (Toll free)

Web site: www.wheelersvanrentals.com/

Access to Beaches and Trails

All terrain wheelchairs are available at selected beaches on Kaua'i. Contact the County of Kaua'i, Department of Parks and Recreation for information at **(808) 241-4460**.

For information on trails throughout the state, contact the Department of Land and Natural Resources, Nā Ala Hele Trails and Access Program at **(808) 973-9782** or <https://hawaii Trails.hawaii.gov/trails/#/>

Communication Access Services

Telecommunications Relay Service (TRS) is available statewide by calling **711**.

Sign Language Interpreters and other Communication Access Providers

Hawai'i Interpreting Services
(808) 394-7706

(808) 692-0595 (Videophone)

Email: info@interpretinghawaii.com

Web site: www.interpretinghawaii.com

Isle Interpret

(855) 475-3874 (Toll Free)

(808) 445-9125

(808) 791-0505 (Videophone)

Email: info@isleinterpret.com

Web site: www.isleinterpret.com

Medical Equipment

The following medical supply and health care companies sell and rent medical equipment and supportive aids. This listing is not an endorsement for any particular company, business or product. You can also refer to the phone directory yellow pages under Medical Equipment and Supplies for more listings. Contact the medical supply and health care companies in advance to ensure your equipment needs are ready when you arrive in Hawai'i.

Apria Healthcare

Apria Healthcare on O'ahu also services Kaua'i
(808) 485-0178
(888) 492-7742 (Toll free from Kaua'i
to Apria Healthcare on O'ahu
Web site: www.apria.com

Gammie HomeCare

(808) 632-2333
(808) 442-0409 (Fax)
Web site: www.gammie.com

Hawai'i Home Infusion

(888) 779-8477 (Toll free)
(808) 245-3787

Accessible Parking

The State of Hawai'i recognizes valid person with a disability parking placards issued by other states and countries for parking in designated, accessible parking spaces. Parking placards may hang from the vehicle's rearview mirror or be placed on the front dash when the vehicle is parked in a designated space.

Service Animals

Contact the Hawai'i Department of Agriculture for information on requirements for allowing guide dogs and service animals to enter Hawai'i without quarantine.

Hawai'i Department of Agriculture

Animal Quarantine Branch
(808) 483-7151
(808) 483-7161 (Fax)
Email: rabiesfree@hawaii.gov
Web site: <http://hdoa.hawaii.gov/>

Web site on quarantine information for service animals: <http://hdoa.hawaii.gov/ai/aqs/animal-quarantine-information-page/guide-service-dogs-entering-hawaii/>.

Visitor Aloha Society of Hawai'i

The Visitor Aloha Society of Hawai'i assists visitors who are victims of crime, accident, death in the family, or other adversities while visiting Hawai'i.

Visitor Aloha Society of Kaua'i

(808) 482-0111
Email: daphne/threse@yahoo.com
Web site: www.visitoralohasocietyofhawaii.org

Transportation

The County of Kaua'i operates a public fixed-route and paratransit bus service. All buses are wheelchair accessible. Contact the County of Kaua'i, Transportation Agency for information on bus routes, schedules, hours of operation, and paratransit service at **(808) 246-8110**.

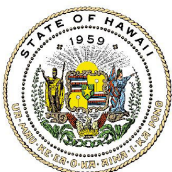
**County of Kaua'i
Transportation Agency
(808) 246-8110
(808) 241-6417 (Fax)
Email: TheKauaiBus@kauai.gov
Web site: www.kauai.gov/Transportation**



This guide was prepared by State of Hawai'i, Department of Health

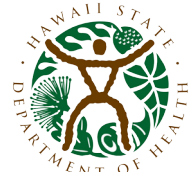
**Disability and Communication Access Board
1010 Richards Street, Room 118 • Honolulu, HI 96813
(808) 586-8121 (V) • (808) 586-8162 (TTY) • (808) 586-8129 (Fax)
Web site: <http://health.hawaii.gov/dcab> • Email: dcab@doh.hawaii.gov**

We provide access to our activities without regard to race, color, national origin (including language), age, sex, religion, or disability. If you have a concern, write or call the Disability and Communication Access Board or the Department of Health Affirmative Action Officer at P.O. Box 3378, Honolulu, HI 96801-3378, or call (808) 586-4614 (V/TTY) within 180 days of a problem.



David Ige
Governor of Hawaii

Revised June 2018



Bruce Anderson, M.D.
Director of Health