

Chapter 1
Marine Waters

PART A. SCOPE OF WATERS

This chapter of the 2012 Integrated Report covers all waters of salinity more than 0.5 parts per thousand. Assessment units for the 2012 Integrated Report remain the same as the assessment units applied in previous reports. Waterbodies are partitioned according to Hawaii Administrative Rules (HAR) §11-54 by type, and then listings are renewed accordingly. Refer to methodology section in Part B.2. for details regarding decision units for attainment decisions.

PART B. MONITORING AND ASSESSMENT

B.1. Monitoring Program

This section of the 2012 Integrated Report discusses HDOH's monitoring program for marine waters. The entire monitoring program is examined from strategies and procedures to data assessment.

B.1.1. Monitoring Strategy Overview

Two main types of surface water monitoring data are used in this report: bacteriological and chemical. Bacteriological monitoring of the shoreline areas is conducted under the auspices of the HDOH Clean Water Branch (CWB) Beach Monitoring program and the guidance of HDOH's Beach Monitoring Quality Assurance Project Plan (QAPP). CWB coastal chemistry sampling was limited to shoreline areas for the period reviewed in this report.

EPA's STORET database is the repository of data and information collected by HDOH. Waterbody assessments utilize the most current data and information from these systems. For the 2012 Integrated Report, HDOH retrieved data from STORET for the period starting in January 2006 and ending in October 2011. The end-users of the STORET database system include not only government agencies, but also consultants, students, and the general public.

Assisted monitoring programs contribute invaluable service not only to communities but to government as well. In Hawaii, an example of data generated by monitoring groups is the HDOH's monitoring program partnership with the Hanalei Watershed Hui and Surfrider organizations.

Collaboration between HDOH and other state and federal agencies, including private consulting firms, is another key component of the monitoring program. CWA §401 and §402 permits stipulate water quality monitoring requirements applied to permit holders. Monitoring conducted by permittees provides a source of data from which the State's monitoring program also benefits. Water quality data generated by permittees results in greater statewide coverage and comprehensive assessments at no increased cost to the HDOH program. The coordination between multiple agencies and permit applicants also provides for expediting the permitting process through early plan reviews and dialogues in preconstruction meetings.

B.1.2. Microbiological Sampling

The CWB microbiological sampling program focuses mainly on shoreline waters throughout the state for the purpose of assuring the safety of swimmers, surfers, divers, and other recreational

users of near shore waters. This program serves two purposes. First, it identifies those areas where there is a potential for health related risks associated with the recreational use of shoreline waters. Second, monitoring provides an ongoing baseline from which to establish trends in the future and from which to determine if additional sample results show unusual or abnormal levels of indicator bacteria (i.e., indicating possible contamination, such as a sewage leak).

Water samples are analyzed for enterococci, the recommended EPA indicator bacteria for marine recreational waters. EPA has allowed Hawaii to use *Clostridium perfringens*, in conjunction with enterococci, as a secondary tracer to help confirm high bacterial indicator counts.

For the period between January 2006 and October 2011, the CWB bacteriological monitoring program collected samples at approximately 313 stations throughout the state (Kauai, 54 stations; Oahu, 123; Maui, 67; and Hawaii, 69). The approximate 313 stations are among the 388 beach stations established throughout the state, most of which are sampled on a rotational basis. The sites are monitored on a twice-weekly (core sites) or bi-weekly (rotational sites) basis.

B.1.3. Chemical Sampling

The CWB periodically collects shoreline chemistry samples for nutrient analysis, in support of the CWB's Polluted Runoff Control Program. The chemistry parameters analyzed include Nitrate+Nitrite Nitrogen, Ammonia Nitrogen, Total Nitrogen, Total Phosphorus, and Chlorophyll-a.

B.1.4. Laboratory Analytical Support

The HODOH employed the use of three Hawaii-based laboratories for analysis of samples: the State DOH Laboratory, Natural Energy Laboratory of Hawaii (NELH), and Microbiology Consulting Services, LLC (MCS). The Environmental Health Analytical Services Branch (EHASB) of the State Laboratories Division is responsible for the analysis of the samples collected by HODOH personnel. The two basic types of samples, microbiological and chemical, are each handled by separate sections within EHASB. Microbiological samples for West Hawaii (Kona) were handled by NELH until 2007. MCS began microbiological sampling analysis for West Hawaii in July 2007. The State maintains microbiology laboratories on each of the four largest islands (Kauai, Oahu, Maui, and Hawaii) which conducts the analysis for their respective islands. Only the Oahu laboratory is currently capable of conducting chemical analyses. Samples from the other islands are air-shipped to the Oahu laboratory for chemical analysis.

B.1.5. Quality Assurance/Quality Control

The monitoring program quality assurance/quality control (QA/QC) is governed by the CWB Beach Monitoring Quality Assurance Project Plan (QAPP) and the Coastal Chemistry Monitoring Quality Assurance Project Plan.

B.1.6. Data Storage, Management, and Sharing

The main repository for monitoring data is EPA's STORage and RETrieval (STORET) system. All post 1999 sampling data obtained from the CWB's fixed network of routine monitoring stations are first compiled into a CWB Access database, then entered into EPA's STORET system. Data prior to 1999 are stored in the "Legacy STORET Database". As of 2007,

monitoring data are transferred into STORET via the Water Quality Exchange (WQX) system. The data are then uploaded to EPA's main database which can be accessed via the internet. Future plans include development of a SQL based data management interface, and the use of the Exchange Network for data transfer (www.exchangenetwork.net).

Permittee effluent monitoring also generates a significant amount of sampling data. However, the data are only on hard copy, not in electronic form. Although the data are accessible, they must be gathered and then compiled by hand before analysis is performed. Permittee Zone-of-Mixing (ZOM) data was manually collected and assessed for use in this report.

B.2. Assessment Methodology

B.2.1. Data Sources

A formal call for marine data was made, ending in November 2011. Any data received after the submission deadline will be incorporated in the next cycle, the 2014 Report. The list below details the major sources used in the 2012 Integrated Report.

CLEAN WATER BRANCH (CWB)

With continued funding from EPA's Beaches Environmental Assessment and Coastal Health (BEACH) program, the existing bacteriological shoreline program was able to greatly increase both the number of sites and samples taken. The microbiological dataset extends from 1973 to present. Data from the previous six years (January 2006 through October 2011) were assessed for this report. The CWB Monitoring Section provided a bacteriological dataset of 32,460 samples from the four main Hawaiian Islands. The data were collected following the CWB Beach Monitoring QAPP and are routinely checked by the QA/QC officer.

ENVIRONMENTAL ASSESSMENT COMPANY (EAC)

EAC is a private research company headed by Richard Brock, PhD. An extensive dataset was provided by Dr. Brock for the south-southeastern coast of Lanai, and the Kona (western) coast of Hawaii. All data was produced following a prepared methodology, complying with the "West Hawaii Coastal Monitoring Program Monitoring Protocol Guidelines" (May 1992). Laboratory analysis followed Standard Methods (1999).

MARINE RESEARCH CONSULTANTS (MRC)

MRC is a private research company headed by Steve Dollar, PhD. The ongoing research was prepared for the Makena Resort Corporation to characterize coastal water quality (specifically targeting parameters set forth in HAR §11-54), in Makena, Maui. An extensive dataset was provided, following prepared sampling methodology and documented analysis methodology (Strickland and Parsons 1968, Grasshoff 1983), and utilizing EPA rated laboratories (Marine Analytical Specialists).

HANALEI WATERSHED HUI

In 2005, the CWB began a cooperative bacteriological sampling program with the Hanalei Watershed Hui, in which the Hui collects samples at several of the northern Kauai stations. Data are collected according to the CWB BEACH Monitoring QAPP.

CITY AND COUNTY OF HONOLULU (CCH)

The CCH collects shoreline, nearshore, and offshore bacterial and chemical samples as part of their permit requirements for their four Waste Water Treatment Plant (WWTP) permits. The four WWTPs are located in the areas of Waianae, Honouliuli, Sand Island, and Kailua (Mokapu).

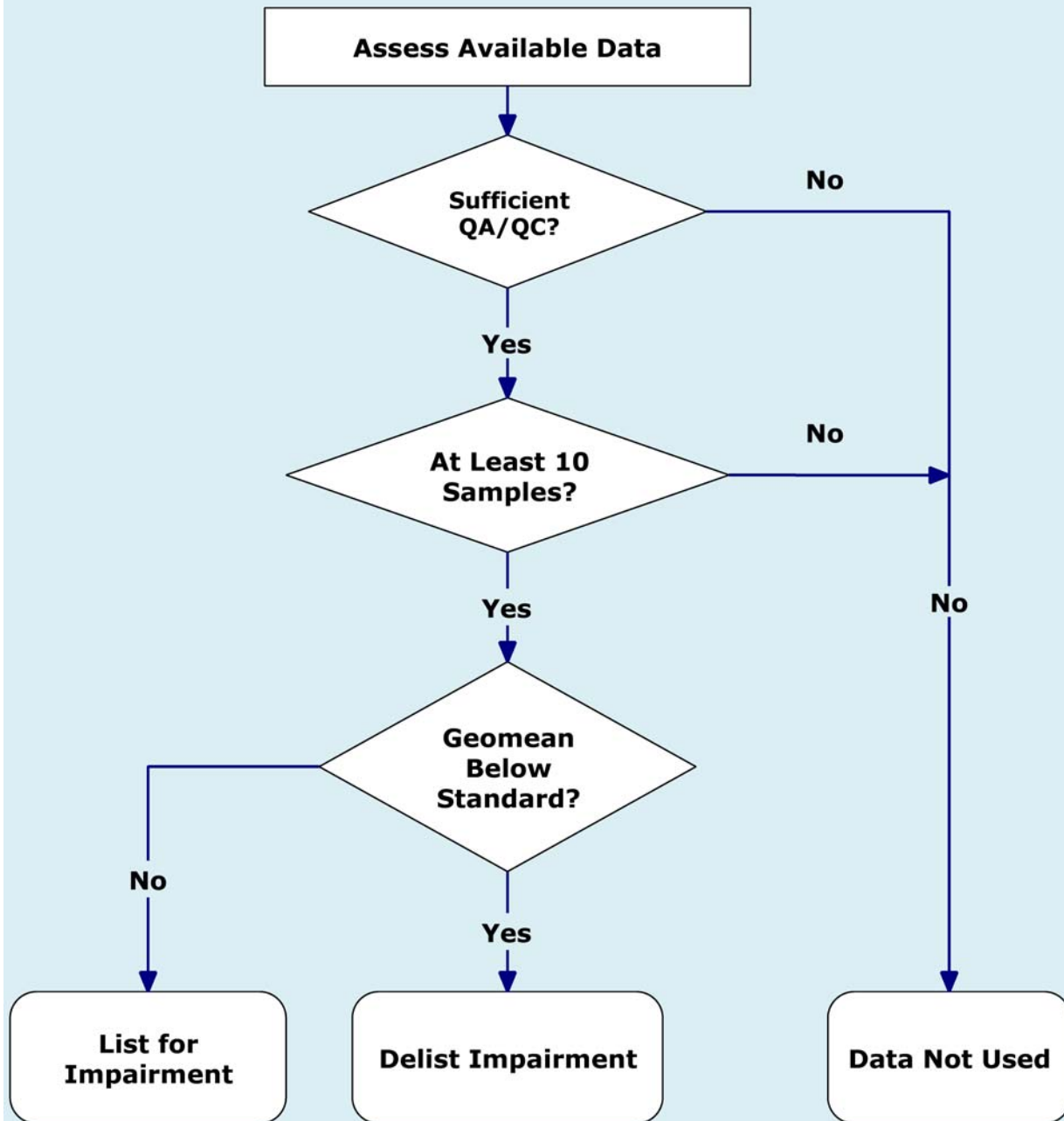
B.2.2. Assessment Methodology

Data from marine waters monitored between January 2006 and October 2011 were assessed for this report. The assessments performed by CWB staff for this document follow the EPA's Guidance for 2006 Assessment, Listing and Reporting document (EPA 2005) to the maximum extent practicable. The flow chart in Figure 1 shows the basic process used for listing/delisting conventional pollutants. Enterococci data was given a 10% allowable exceedence, in which the waterbody was not listed as impaired if the geometric mean exceeded state standards 10% or less of the time for the entire data set.

For this cycle, the multi-categorization method as proposed by EPA has been retained, yielding a better categorical description for each waterbody. Please refer back to the Introduction section for the list and description of the categories. Table 4 documents changes made between the 2008/2010 and the 2012 reports, and the justifications for doing so.

Visual assessments were not used for the 2012 Integrated Report. Unlike previous cycles prior to the 2006 Integrated Report, visual assessment data was not available for the 2012 cycle. Listings from previous cycles based on legacy visual assessments have been carried over to the present listing. An example is the carry-over of the 2004 nutrient and turbidity listing for the geographic scope of "Kahului Bay inshore of breakwater". In future cycles, it is possible that these data will be revisited and/or reassessed.

FIGURE 1: Flow Chart of Listing/Delisting Process for Conventional Pollutants
(enterococci, TN, NO₃+NO₂, TP, turbidity, chl-a, NH₄, others)



B.2.3. Hawaii Water Quality Standards

The HAR §11-54 defines the State standards for particular parameters for Hawaii waters, and is defined by both narrative and numerical criteria. HAR §11-54-1.1 defines a general policy of water quality anti-degradation for all water types and is as follows:

- (a) Existing uses and the level of water quality necessary to protect the existing uses shall be maintained and protected.
- (b) Where the quality of the waters exceed levels necessary to support propagation of fish, shellfish, and wildlife and recreation in and on the water, that quality shall be maintained and protected unless the director finds, after full satisfaction of the intergovernmental coordination and public participation provisions of the state's continuing planning process, that allowing lower water quality is necessary to accommodate important economic or social development in the area in which the waters are located. In allowing such degradation on lower water quality, the director shall assure water quality adequate to protect existing uses fully. Further, the director shall assure that there shall be achieved the highest statutory and regulatory requirements for all new and existing point sources and all cost-effective and reasonable best management practices for nonpoint source control.
- (c) Where existing high quality waters constitute an outstanding resource, such as waters of national and state parks and wildlife refuges and waters of exceptional recreational or ecological significance, that water quality shall be maintained and protected.

HAR §11-54-3(c) defines classifications for marine waters. Marine waterbodies are separated by type into three main waterbody categories: embayment, open coastal, and oceanic. The classification uses a tiered system, defining two Classes, "AA" and "A". Class AA waters are described as: "It is the objective of class AA waters that these waters remain in their natural pristine state as nearly as possible with an absolute minimum of pollution or alteration of water quality from any human-caused source or actions. To the extent practicable, the wilderness character of these areas shall be protected." Zones of mixing are not permitted within certain Class AA waters (HAR §11-54-3(c)(1)). Class A waters are describes as: "It is the objective of class A waters that their use for recreational purposes and aesthetic enjoyment be protected. Any other use shall be permitted as long as it is compatible with the protection and propagation of fish, shellfish, and wildlife, and with recreation in and on these waters." New sewage discharges or industrial discharges are not permitted within Class A embayments, with the exception of three industrial discharge types identified in HAR §11-54-3(c)(2).

The embayment and open coastal categories are further refined by inclusion of a wet or dry criterion, typically defined by levels of freshwater input (HAR §11-54-6(a)(3) and HAR §11-54-6(b)(3)). These criteria were revised in the 2006 Report using maps of "Wet and Dry Marine Waters" provided in State 208 Plans and county Water Management Plans. Delineations of embayments and their mouth openings made for the 2006 Report using best professional judgment remain the same. Two special area categories, Pearl Harbor and Kona (west Hawaii), are defined for marine waters, and establish specific standards for their respective water type.

Available assessment data were compiled using the defined methodology (geometric mean) and compared to each applicable standard. Each waterbody was categorized according to

comparison with each particular standard. A more detailed description of the standards can be accessed at the following website: <http://gen.doh.hawaii.gov/sites/har/AdmRules1/11-54.pdf>.

HIDOH's microbiological sampling utilizes enterococci bacteria density measurements as an indicator of human fecal contamination. However, using this bacterial indicator for the State standard has been found to be problematic in Hawaii and other BEACH programs across the country. Several studies have shown that enterococci may not be a reliable indicator in tropical locations such as Hawaii because it can multiply outside of the human body, and is also found in fecal matter of various wildlife, such as feral pigs.² Additionally, a 2005 study at Mission Bay, San Diego, California focused upon tracking causes of bacterial contamination, and found that "...fecal coliform and *Enterococcus* bacteria can survive for prolonged periods of time in coastal storm drains..." and that "...the majority of the indicator bacteria in Mission Bay originates from birds and that the initial load generated from avian sources can then be amplified by irrigation runoff, storm drains, intertidal sediments, and the wrack line" (Gruber et al., 2005).³

Clostridium perfringens has validity as an effective tracer of fecal contamination and is a viable option as an additional tool for monitoring water quality. A report produced by the Experts Scientific Workshop on Critical Research Needs for the Development of New or Revised Recreational Water Quality Criteria attempted to address the applicability of several potential bacterial indicators. The report acknowledges that "The presence of *C. perfringens* (spores) in water, therefore provides evidence of existing human/urban fecal contamination...", and adds that "although methods have been available for some time, confirmation of a robust and consistent method approach should be developed".⁴ As shown, both organisms have limitations in applicability. Usage of a single organism for water quality characterization, therefore, is not desirable. To improve the accuracy of Hawaii's water quality monitoring, a two-organism approach is applied, using *C. perfringens* as a companion tracer alongside enterococci.

Although the HAR does not specify the use of *C. perfringens* as a companion indicator for enterococci, as noted earlier, it is allowable by EPA for its use as a tool in Hawaii, and has been employed effectively in daily assessments. Bacteriological assessments for this report were based only on enterococci data.

B.2.4. Assessment Units

Hawaii's topographical structure is generally comprised of short, small watersheds defined by steep mountain walls. Input of fresh waters into the fronting marine waters is generally limited to the specific watershed that feeds those streams. In future cycles it is hoped that watershed names will be included to organize listings for both inland and marine waters. It is hoped that the restructuring of the assessment units may provide a more seamless integration of both water-

² Byappanahalli, M and R. Fujioka. 2004. Indigenous soil bacteria and low moisture may limit but allow fecal bacteria to multiply and become a minor population in topical soils. *Water Science and Technology*. vol. 50, 1:27-32.

³ Gruber, S.J., Kay, L.M., Kolb, R., and Henry, K. 2005 Mission Bay bacterial source identification study-A Clean Beaches initiative grant helps track causes of contamination. *Stormwater*. vol 6,3:40-51.

⁴ EPA - Office of Water, Office of Research and Development. 2007. *Report of the Experts Scientific Workshop on Critical Research Needs for the Development of New or Revised Recreational Water Quality Criteria*. EPA 823-R-07-006. (June 15, 2007).

types. Water Quality Standards Maps are located on the CWB website:
<http://hawaii.gov/health/environmental/water/cleanwater/wqstd/index.html>.

Delineated units from the previous 2008/2010 Report were carried over to this 2012 Report. Each named segment corresponds to an identification alphanumeric geocode (e.g. Royal-Moana Beach is geocode HI898947), which is used to identify the segments in Tables 2-4. A discussion on the geocodes is found in the following section, Assessment Codes.

B.2.5. Assessment Codes (Geocode IDs)

The alphanumeric codes (geocodes) assigned to each marine waterbody in the 2008/2010 Integrated Report were retained for the 2012 Report. Two sets of geocodes exist in the Hawaii structure, a two-letter alphanumeric (HI) and 3-letter alphanumeric (HIW). The numeric portion of both geocodes is preceded by the state abbreviation (HI) as suggested by EPA protocol. The two-letter geocode is from an existing structure of the EPA BEACH program that identifies recreational waters across the state. The three-letter code was generated in response to areas where BEACH codes do not exist and areas that are divided into small subsections. Each code is comprised of a total of eight characters, and is not ordered.

B.3. Assessment Results

Table 1 below summarizes the results of the assessment. Of the approximately 575 marine waterbody segments already established statewide, 310 (54%) waterbody segments are assessed for this report.

TABLE 1. Category Totals by Island

Island	Total # Assessed Segments	# Segments w/ Listed Pollutant	# Newly Listed Pollutants	# Newly Listed Waterbodies	# Delisted Pollutants	# Delisted Waterbodies
Kauai	33	23	5	2	3	2
Oahu	134	73	16	8	7	0
Molokai	0	3	0	0	0	0
Lanai	7	7	0	0	2	1
Maui	62	76	34	5	3	1
Hawaii	74	43	48	11	6	1
Totals	310	225	103	26	21	5

A total of five waterbodies were delisted (no category 5 listing present). Table 2 displays the delisted waterbodies. Assessment results for four delisted waterbodies showed that state standards were attained for enterococci, using the enterococci indicator bacteria as mentioned earlier in the document. Manele Bay Beach showed attainment of the state's Total Nitrogen standard.

TABLE 2. Delisted Marine Waterbodies

Island	Scope of Assessment	Geocode	Enterococci	TN	NO3 + NO2	TP	Turb	chl-a	NH4
Kauai	Lydgate Park	HI798758	A	?	?	?	?	?	?
Kauai	Wailua (Wailua River Station)	HI606168	A	?	?	?	?	?	?
Lanai	Manele Bay Beach	HIW00178	?	A	A	A	A	A	A
Maui	Ukumehame Beach Co. Pk.	HI814309	A	?	?	?	?	?	?
Hawaii	Kamakaokahonu	HIW00032	A	?	?	?	?	?	?

Key: Enterococci=enterococci; TN=Total Nitrogen; NO3+NO2=Nitrate+Nitrite Nitrogen; TP=Total Phosphorus; Turb=Turbidity; chl-a=chlorophyll a; NH4=Ammonium Nitrogen; **BOLD A**=Delisted pollutant (data shows attainment of the state water quality standard).

A total of 19 previously listed waterbodies had one or more pollutants delisted, for a total of 21 delisted pollutants. Assessment results for 124 waterbodies showed that State standards were newly attained for enterococci.

A total of 25 new waterbodies were listed with at least one category "5", and a total of 17 previously listed waterbodies had one or more pollutants added to category "5", for a total of 103 newly listed pollutants. Table 3 lists the newly listed waterbodies. Assessments of the newly listed waterbodies showed that State standards for enterococci were not met for 13 waterbodies. State standards for nutrients were not met for 14 of the newly listed waterbodies.

TABLE 3. Newly Impaired (Listed) Marine Waters

Island	Scope of Assessment	Geocode	Entero	TN	NO3+NO2	TP	Turb	chl-a	NH4	other
Kauai	Lumaha'i Beach	HI889639	N	?	?	?	?	?	?	
Kauai	Waimea Rec Pier St Pk	HI245235	N	?	?	?	?	?	?	
Oahu	Ewa (open coastal)	HIW00189	N	A	A	A	A	A	A	
Oahu	Ka'alawai Beach	HI253930	N	?	?	?	?	?	?	
Oahu	Kapoho Point	HIW00192	N	?	?	?	?	?	?	
Oahu	Keehi Lagoon	HIW00009	N	?	?	?	?	?	?	
Oahu	Kuli'ou'ou	HI360513	N	?	?	?	?	?	?	
Oahu	Laenani Beach Co Pk	HI930562	N	?	?	?	?	?	?	
Oahu	Punaluu Beach Park	HI148836	N	?	?	?	?	?	?	
Oahu	Sandy Beach (open coastal)	HIW00191	?	N	A	A	A	?	A	
Maui	Honolua Bay	HI280286	A	N	N	N	?	N	N	
Maui	Kahului Bay	HIW00195	?	N	N	N	?	N	N	
Maui	Kalama Beach Co Park (Cove Park)	HI705118	A	N	N	N	?	N	N	
Maui	Maliko Bay	HI423064	N	?	?	?	?	?	?	
Maui	Napili Bay	HI764060	A	A	N	N	?	N	N	
Hawaii	Banyan's Surfing Area	HI713314	N	?	?	?	?	?	?	
Hawaii	Kapoho Bay	HI391407	N	?	?	?	?	?	?	
Hawaii	Kauilii Pt-Kapaa Beach Park	HIW00201	?	N	N	A	A	N	N	
Hawaii	Kauilii Pt-Kapaa Bch (oceanic)	HIW00202	?	N	A	N	N	N	A	
Hawaii	Keahole Point	HIW00203	?	A	A	A	N	A	N	PO4(A)
Hawaii	Mahukona Harbor	HIW00197	?	N	N	A	N	N	N	
Hawaii	Mahukona Harbor (oceanic)	HIW00198	?	N	A	N	N	N	A	
Hawaii	Makaohule Pt-Kauilii Pt	HIW00199	?	N	N	A	A	N	N	
Hawaii	Makaohule Pt-Kauilii Pt (oceanic)	HIW00200	?	N	A	N	N	N	A	
Hawaii	Pelekane Bay	HI738158	N	N	N	N	?	N	N	
Hawaii	Waiulaula	HI934020	A	N	N	N	?	N	N	

Key: Entero=enterococci; TN=Total Nitrogen; NO3+NO2=Nitrate+Nitrite Nitrogen, TP=Total Phosphorus; Turb=Turbidity; chl-a=chlorophyll a; NH4=Ammonium Nitrogen; **BOLD A**=Newly Delisted pollutant (data shows attainment of the state water quality standard); **BOLD N**=Newly Listed pollutant (data shows non-attainment of the state water quality standard).

Two tables are provided to display changes that have occurred since the previous listing period, Table 4 and the 2012 Waterbody Assessment Decisions Table (Chapter 3). Table 4 is provided to aid the reader in tracking any changes from the 2008/2010 Integrated Report for marine/estuary waters to the 2012 cycle. The first column of Table 4, entitled Scope of Assessment, contains the specific name of the area that the assessment applied to. The second column, Geocode ID, contains the alphanumeric identifier for the waterbody. Column 3 contains the pollutant where a change has occurred. Column 4 lists the action taken to categorize the waterbody as a result of assessed data. Column 5 describes the justification for each action taken. Column 6 describes the reasons for the change.

Assessment results for each waterbody were categorized according to EPA methods, and placed in the 2012 Waterbody Assessment Decision table in Chapter 3, for both marine and inland waters. Inland waters are discussed in Chapter 2. The following narrative only applies to the marine section of the Waterbody Assessment Decision table. The first column contains the waterbody type, as distinguished by HAR §11-54. The second column, Scope of Assessment, is the name of the specific area that the assessment applies to. The third column contains the Geocode ID, which is the alphanumeric identifier attached to each listing. Column 4 denotes which criteria (wet or dry) the assessed segment is located in. Columns 5 through 9 contain common pollutants found in Hawaii's waters, and Column 10 lists other less frequently found pollutants. The eleventh column contains the assessment categories that apply to each waterbody. As described earlier, the multi-category assessment allows for a better description of each waterbody. The last column states the TMDL priority and indicates which TMDLs are currently under development or completed.

If the calculated level of a pollutant was found to be above the State standard, the parameter was entered in columns 5 through 10 as "Not Attaining" (N) and assigned to either category "5" or "4b". For this listing cycle, category "4b" was assigned to a waterbody where enterococcus levels were above state standards. An active consent decree in effect for a discharger into this waterbody demonstrates that steps are being taken to address the water quality impairment by methods other than a TMDL within a reasonable timeframe.⁵ If the calculated value was below the stated value, the parameter was entered as "Attaining" (A) and assigned to category "2". It is important to note that the marine waterbodies entered in the table are not reflective of all marine areas of the state. Rather, they indicate areas where sampling has taken place, and areas of higher incidence of human contact. Areas not shown in the table do not have any sampling data available, and are considered to be in category "3". Ensuing cycles may add waters as necessary. Parameters where no data were available were coded with a "?" and also assigned to category "3".

The Waterbody Assessment Decisions Table in Chapter 3 contains a number of waterbodies that are similar in name to other waterbodies (indicated by an asterisk *); these are not duplicates. These waterbody entries are from previous 303(d) listing cycles and were listed at that time as separate entries from similar sampling stations.

⁵ Information on the consent decree with the City and County of Honolulu can be found at <http://www.epa.gov/compliance/resources/cases/civil/cwa/honolulu.html>

TABLE 4. Category List of Changes from 2008/2010 Listed Coastal Waters

- A multi-category listing method was employed for 2012 to better characterize water quality conditions.
- The Pollutants column is populated with pollutants on which a *change* has occurred (e.g. new listing, delisting, etc.).
- Pollutants: entero=enterococci; TN=Total Nitrogen; NO3+NO2=Nitrate+Nitrite nitrogen; TP=Total Phosphorus; Turb=Turbidity; chl-a=chlorophyll a; NH4=ammonium nitrogen; PO4=Phosphate.
- For the purposes of this report, listed water bodies are sorted by island, north to south.
- Summary Rationale Codes: NND=New Numerical Data; NL=New Listed Impairment (category 5); DL=Delisting (category 5 to 2); A2=Assigning of category 2; A4b=Assigning of category 4b; TC=Textual Change.

KAUAI					
Scope of Assessment	Geocode ID	Pollutant	Decision Action	Summary Rationale	Reason for Changes
Hanalei Bay upstream of Dolphin*	HIW00160	Wet/Dry Criteria	Correction	TC	Correction of mislabeled wet/dry criteria from WET to NA.
Hanalei River	HI385259	Wet/Dry Criteria	Correction	TC	Correction of mislabeled wet/dry criteria from WET to NA.
Kealia	HI402035	entero		NND, A2	Assign cat. 2; The assessment of new data documents indicate that applicable WQS are being attained.
Lumaha'i Beach	HI889639	entero	List Pollutant	NND, NL	ASSIGN cat. 5; The assessment of new data documents indicate that applicable WQS are not being attained.
Lydgate Park	HI798758	entero	Delist Pollutant	NND, DL	DELIST: cat. 2; The assessment of data documents indicate that applicable WQS are now being attained for entero, resulting in a category change from 5 to 2.
Na Pali Coast State Park	HI709808	Wet/Dry Criteria	Correction	TC	Correction of mislabeled wet/dry criteria from DRY to WET.
Nawiliwili Bay (Kalapaki Beach)	HIW00114	Wet/Dry Criteria	Correction	TC	Correction of mislabeled wet/dry criteria from WET to DRY.
		chl-a	List Pollutant	NND, NL	ASSIGN cat. 5; The assessment of new data documents indicate that applicable WQS are not being attained.
		NH4	List Pollutant	NND, NL	ASSIGN cat. 5; The assessment of new data documents indicate that applicable WQS are not being attained.

KAUAI					
Scope of Assessment	Geocode ID	Pollutant	Decision Action	Summary Rationale	Reason for Changes
Nawiliwili Bay (Nawiliwili Harbor)	HIW00115	Wet/Dry Criteria	Correction	TC	Correction of mislabeled wet/dry criteria from WET to DRY.
		entero	Delist Pollutant	NND, DL	DELIST: cat. 2; The assessment of data documents indicate that applicable WQS are now being attained for entero, resulting in a category change from 5 to 2.
		chl-a	List Pollutant	NND, NL	ASSIGN cat. 5; The assessment of new data documents indicate that applicable WQS are not being attained.
Nawiliwili Bay-from breakwater to shore	HIW00059	Wet/Dry Criteria	Correction	TC	Correction of mislabeled wet/dry criteria from WET to DRY.
Nu'alolo	HI945520	Wet/Dry Criteria	Correction	TC	Correction of mislabeled wet/dry criteria from DRY to WET.
Pacific Missile Range Facility	HI176480	entero		NND, A2	Assign cat. 2; The assessment of new data documents indicate that applicable WQS are being attained.
Sheraton Beach	HI542569	entero		NND, A2	Assign cat. 2; The assessment of new data documents indicate that applicable WQS are being attained.
Shipwreck Beach	HI358435	entero		NND, A2	Assign cat. 2; The assessment of new data documents indicate that applicable WQS are being attained.
Waikoko Estuary	HIW00162	Wet/Dry Criteria	Correction	TC	Correction of mislabeled wet/dry criteria from WET to NA.
Wailua (Wailua River Station)	HI606168	Waterbody Type	Correction	TC	Correction of mislabeled waterbody type from Estuary to Coastal.
		entero	Delist Pollutant	NND, DL	DELIST: cat. 2; The assessment of data documents indicate that applicable WQS are now being attained for entero, resulting in a category change from 5 to 2.
Waimea Bay Beach (Near River station)	HI862821	Wet/Dry Criteria	Correction	TC	Correction of mislabeled wet/dry criteria from NA to DRY.
Waimea Bay Beach-nearshore waters to 18' from Kekaha Oomano Pt. - 1.5 miles SE of Mahinaui Stream	HIW00057	Wet/Dry Criteria	Correction	TC	Correction of mislabeled wet/dry criteria from WET to DRY.

KAUAI

Scope of Assessment	Geocode ID	Pollutant	Decision Action	Summary Rationale	Reason for Changes
Waimea Rec. Pier St. Pk.	HI245235	entero	List Pollutant	NND, NL	ASSIGN cat. 5; The assessment of new data documents indicate that applicable WQS are not being attained.
Waioli Stream Estuary	HIW00163	Wet/Dry Criteria	Correction	TC	Correction of mislabeled wet/dry criteria from WET to NA.
Waipa Stream Estuary	HIW00164	Wet/Dry Criteria	Correction	TC	Correction of mislabeled wet/dry criteria from WET to NA.

OAHU					
Scope of Assessment	Geocode ID	Pollutant	Decision Action	Summary Rationale	Reason for Changes
Aukai Beach Co. Park	HI145110	entero		NND, A2	Assign cat. 2; The assessment of new data documents indicate that applicable WQS are being attained.
Diamond Head	HI544313	Geocode ID	Correction	TC	Correction of mislabeled geocode ID to match BEACH Report from HI431723 to HI544313.
Ehukai Beach Co. Pk.	HI531535	entero		NND, A2	Assign cat. 2; The assessment of new data documents indicate that applicable WQS are being attained.
Ewa (open coastal)	HIW00189	entero		NND, A4b	Assign cat. 4b; The assessment of new data documents indicate that applicable WQS are not being attained. Pollution is being addressed through pollution control requirements other than a TMDL.
Ewa Beach	HI767464	entero		NND, A2	Assign cat. 2; The assessment of new data documents indicate that applicable WQS are being attained.
Fort Hase Beach	HI410735	entero		NND, A2	Assign cat. 2; The assessment of new data documents indicate that applicable WQS are being attained.
Halona Cove	HI132946	entero		NND, A2	Assign cat. 2; The assessment of new data documents indicate that applicable WQS are being attained.
Hanauma Bay (oceanic)	HIW00017	Waterbody Type	Correction	TC	Correction of mislabeled waterbody type from Bay to Oceanic.
		Wet/Dry Criteria	Correction	TC	Correction of mislabeled wet/dry criteria from DRY to NA.
Honolulu Harbor & Shore area-Honolulu Waterfront-Aloha Tower	HIW00061	NO3+NO2		NND, A2	Assign cat. 2; The assessment of new data documents indicate that applicable WQS are being attained.
		Turb	Delist Pollutant	NND, DL	DELIST: cat. 2; The assessment of data documents indicate that applicable WQS are now being attained for total nitrogen, resulting in a category change from 5 to 2.
		NH4	List Pollutant	NND, NL	ASSIGN cat. 5; The assessment of new data documents indicate that applicable WQS are not being attained.

OAHU					
Scope of Assessment	Geocode ID	Pollutant	Decision Action	Summary Rationale	Reason for Changes
Ihilani Honu Lagoon	HI815093	entero		NND, A2	Assign cat. 2; The assessment of new data documents indicate that applicable WQS are being attained.
Ihilani Ulua Lagoon	HI550240	entero		NND, A2	Assign cat. 2; The assessment of new data documents indicate that applicable WQS are being attained.
Iroquois Pt.	HI412839	Waterbody Type	Correction	TC	Correction of mislabeled waterbody type from Coastal to Pearl Harbor.
		Wet/Dry Criteria	Correction	TC	Correction of mislabeled wet/dry criteria from WET to NA.
		entero		NND, A2	Assign cat. 2; The assessment of new data documents indicate that applicable WQS are being attained.
Ka'alawai Beach	HI253930	entero	List Pollutant	NND, NL	ASSIGN cat. 5; The assessment of new data documents indicate that applicable WQS are not being attained.
Ka'ena Pt.	HI645485	entero		NND, A2	Assign cat. 2; The assessment of new data documents indicate that applicable WQS are being attained.
Kahe Pt. Beach Co. Pk.	HI548986	entero		NND, A2	Assign cat. 2; The assessment of new data documents indicate that applicable WQS are being attained.
Kahuku Golf Course	HI989341	Waterbody Type	Correction	TC	Correction of mislabeled waterbody type from Estuary to Coastal.
		Wet/Dry Criteria	Correction	TC	Correction of mislabeled wet/dry criteria from NA to DRY.
Kaiaka Bay	HIW00106	entero	List Pollutant	NND, NL	ASSIGN cat. 5; The assessment of new data documents indicate that applicable WQS are not being attained.
Kaihalulu Beach	HI668562	entero		NND, A2	Assign cat. 2; The assessment of new data documents indicate that applicable WQS are being attained.
Kaipapa'u Beach	HI787959	entero		NND, A2	Assign cat. 2; The assessment of new data documents indicate that applicable WQS are being attained.

OAHU					
Scope of Assessment	Geocode ID	Pollutant	Decision Action	Summary Rationale	Reason for Changes
Kaloko (Queens) Beach	HI353985	entero		NND, A2	Assign cat. 2; The assessment of new data documents indicate that applicable WQS are being attained.
Kaneohe Bay (Central Region)	HIW00013	Wet/Dry Criteria	Correction	TC	Correction of mislabeled wet/dry criteria from DRY to WET.
Kaneohe Bay (Northern Region)	HIW00012	Wet/Dry Criteria	Correction	TC	Correction of mislabeled wet/dry criteria from DRY to WET.
Kaneohe Bay (Southern Region)	HIW00011	Wet/Dry Criteria	Correction	TC	Correction of mislabeled wet/dry criteria from DRY to WET.
Kapi'olani Park	HI733929	Wet/Dry Criteria	Correction	TC	Correction of mislabeled wet/dry criteria from WET to DRY.
		entero		NND, A2	Assign cat. 2; The assessment of new data documents indicate that applicable WQS are being attained.
Kaunala Beach	HI622160	entero		NND, A2	Assign cat. 2; The assessment of new data documents indicate that applicable WQS are being attained.
Kea'au Beach Co. Park	HI730738	entero		NND, A2	Assign cat. 2; The assessment of new data documents indicate that applicable WQS are being attained.
Kealia Beach	HI612698	entero		NND, A2	Assign cat. 2; The assessment of new data documents indicate that applicable WQS are being attained.
Keehi Lagoon	HIW00009	entero	List Pollutant	NND, NL	ASSIGN cat. 5; The assessment of new data documents indicate that applicable WQS are not being attained.
Kokololio Beach	HI767708	Geocode ID	Correction	TC	Correction of mislabeled geocode ID to match BEACH Report from HI467112 to HI767708.
Kualoa Sugar Mill Beach	HI484535	entero		NND, A2	Assign cat. 2; The assessment of new data documents indicate that applicable WQS are being attained.
Kuhio Beach	HI681782	Wet/Dry Criteria	Correction	TC	Correction of mislabeled wet/dry criteria from WET to DRY.

OAHU					
Scope of Assessment	Geocode ID	Pollutant	Decision Action	Summary Rationale	Reason for Changes
		entero	Delist Pollutant	NND, DL	DELIST: cat. 2; The assessment of data documents indicate that applicable WQS are now being attained for total nitrogen, resulting in a category change from 5 to 2.
		chl-a	List Pollutant	NND, NL	ASSIGN cat. 5; The assessment of new data documents indicate that applicable WQS are not being attained.
Kuhio Beach (Public Bath)	HI851298	Wet/Dry Criteria	Correction	TC	Correction of mislabeled wet/dry criteria from WET to DRY.
		NH4	List Pollutant	NND, NL	ASSIGN cat. 5; The assessment of new data documents indicate that applicable WQS are not being attained.
Laniloa Peninsula (Beach)	HI201901	entero		NND, A2	Assign cat. 2; The assessment of new data documents indicate that applicable WQS are being attained.
Laukinui Beach	HI739818	entero		NND, A2	Assign cat. 2; The assessment of new data documents indicate that applicable WQS are being attained.
Lualualei Beach Co. Park	HI800877	entero		NND, A2	Assign cat. 2; The assessment of new data documents indicate that applicable WQS are being attained.
Makao Beach	HI147212	Geocode ID	Correction	TC	Correction of mislabeled geocode ID to match BEACH Report from HI542752 to HI147212.
		entero		NND, A2	Assign cat. 2; The assessment of new data documents indicate that applicable WQS are being attained.
Mamala Bay (Oceanic)	HIW00015	Waterbody Type	Correction	TC	Correction of mislabeled waterbody type from Coastal to Oceanic.
		Wet/Dry Criteria	Correction	TC	Correction of mislabeled wet/dry criteria from WET to NA.
Manner's Beach	HI717740	entero		NND, A2	Assign cat. 2; The assessment of new data documents indicate that applicable WQS are being attained.
Maunalua Bay	HIW00016	Waterbody Type	Correction	TC	Correction of mislabeled waterbody type from Bay to Coastal.

OAHU					
Scope of Assessment	Geocode ID	Pollutant	Decision Action	Summary Rationale	Reason for Changes
		Wet/Dry Criteria	Correction	TC	Correction of mislabeled wet/dry criteria from WET to DRY.
Mokule'ia Beach Co. Park	HI220308	entero		NND, A2	Assign cat. 2; The assessment of new data documents indicate that applicable WQS are being attained.
North Beach	HI426406	entero		NND, A2	Assign cat. 2; The assessment of new data documents indicate that applicable WQS are being attained.
Ohikilolo Beach (Barking Sands)	HI731423	entero		NND, A2	Assign cat. 2; The assessment of new data documents indicate that applicable WQS are being attained.
Oneawa Beach	HI952205	entero	Delist Pollutant	NND, DL	DELIST: cat. 2; The assessment of data documents indicate that applicable WQS are now being attained for entero, resulting in a category change from 5 to 2.
Outrigger Canoe Club Beach	HI943325	Wet/Dry Criteria	Correction	TC	Correction of mislabeled wet/dry criteria from WET to DRY.
		entero		NND, A2	Assign cat. 2; The assessment of new data documents indicate that applicable WQS are being attained.
Pahipahi'alua Beach	HI575467	entero		NND, A2	Assign cat. 2; The assessment of new data documents indicate that applicable WQS are being attained.
Papa'iloa Beach	HI478834	entero		NND, A2	Assign cat. 2; The assessment of new data documents indicate that applicable WQS are being attained.
Papaoneone Beach	HI990625	entero		NND, A2	Assign cat. 2; The assessment of new data documents indicate that applicable WQS are being attained.
Pearl Harbor	HIW00006	Turb	Delist Pollutant	NND, DL	DELIST: cat. 2; The assessment of data documents indicate that applicable WQS are now being attained for entero, resulting in a category change from 5 to 2.
Pipeline, The	HI188157	entero		NND, A2	Assign cat. 2; The assessment of new data documents indicate that applicable WQS are being attained.

OAHU					
Scope of Assessment	Geocode ID	Pollutant	Decision Action	Summary Rationale	Reason for Changes
Pokai Bay (oceanic)	HIW00019	Waterbody Type	Correction	TC	Correction of mislabeled waterbody type from Bay to Oceanic.
		Wet/Dry Criteria	Correction	TC	Correction of mislabeled wet/dry criteria to NA.
Pokai Bay (open coastal)	HIW00018	Waterbody Type	Correction	TC	Correction of mislabeled waterbody type from Bay to Coastal.
		Wet/Dry Criteria	Correction	TC	Correction of mislabeled wet/dry criteria to DRY.
		entero		NND, A2	Assign cat. 2; The assessment of new data documents indicate that applicable WQS are being attained.
		TN	Delist Pollutant	NND, DL	DELIST: cat. 2; The assessment of data documents indicate that applicable WQS are now being attained for total nitrogen, resulting in a category change from 5 to 2.
		NO3+NO2		NND, A2	Assign cat. 2; The assessment of new data documents indicate that applicable WQS are being attained.
		TP		NND, A2	Assign cat. 2; The assessment of new data documents indicate that applicable WQS are being attained.
		Turb	List Pollutant	NND, NL	ASSIGN cat. 5; The assessment of new data documents indicate that applicable WQS are not being attained.
		chl-a	Delist Pollutant	NND, DL	DELIST: cat. 2; The assessment of data documents indicate that applicable WQS are now being attained for total nitrogen, resulting in a category change from 5 to 2.
		NH4		NND, A2	Assign cat. 2; The assessment of new data documents indicate that applicable WQS are being attained.
Pounders Beach	HI587568	entero		NND, A2	Assign cat. 2; The assessment of new data documents indicate that applicable WQS are being attained.

OAHU					
Scope of Assessment	Geocode ID	Pollutant	Decision Action	Summary Rationale	Reason for Changes
Punaluu Beach Park	HI148836	entero	List Pollutant	NND, NL	ASSIGN cat. 5; The assessment of new data documents indicate that applicable WQS are not being attained.
Pupukea Beach Co. Park	HI193495	entero		NND, A2	Assign cat. 2; The assessment of new data documents indicate that applicable WQS are being attained.
Pu'uiki	HI437024	entero		NND, A2	Assign cat. 2; The assessment of new data documents indicate that applicable WQS are being attained.
Pu'uohulu Beach	HI960731	entero		NND, A2	Assign cat. 2; The assessment of new data documents indicate that applicable WQS are being attained.
Queen's Surf Beach Park	HIW00069	Wet/Dry Criteria	Correction	TC	Correction of mislabeled wet/dry criteria from WET to DRY.
Sand Island	HI714359	Scope of Assessment	Correction	TC	Correction of scope of assessment to match BEACH Report from Sand Island Pt.#2 to Sand Island.
		TN	Delist Pollutant	NND, DL	DELIST: cat. 2; The assessment of data documents indicate that applicable WQS are now being attained for chl-a, resulting in a category change from 5 to 2.
		NO3+NO2	List Pollutant	NND, NL	ASSIGN cat. 5; The assessment of new data documents indicate that applicable WQS are not being attained.
		TP		NND, A2	Assign cat. 2; The assessment of new data documents indicate that applicable WQS are being attained.
		NH4		NND, A2	Assign cat. 2; The assessment of new data documents indicate that applicable WQS are being attained.
Sans Souci	HI617815	Wet/Dry Criteria	Correction	TC	Correction of mislabeled wet/dry criteria from WET to DRY.
		TN	List Pollutant	NND, NL	ASSIGN cat. 5; The assessment of new data documents indicate that applicable WQS are not being attained.

OAHU					
Scope of Assessment	Geocode ID	Pollutant	Decision Action	Summary Rationale	Reason for Changes
		chl-a	List Pollutant	NND, NL	ASSIGN cat. 5; The assessment of new data documents indicate that applicable WQS are not being attained.
Swanzy Beach Co. Park	HI151343	entero		NND, A2	Assign cat. 2; The assessment of new data documents indicate that applicable WQS are being attained.
Tongg's	HI248913	Wet/Dry Criteria	Correction	TC	Correction of mislabeled wet/dry criteria from WET to DRY.
Turtle Bay	HI776670	entero		NND, A2	Assign cat. 2; The assessment of new data documents indicate that applicable WQS are being attained.
Waiale'e	HI109657	entero		NND, A2	Assign cat. 2; The assessment of new data documents indicate that applicable WQS are being attained.
Waialua Bay	HI451176	Scope of Assessment	Correction	TC	Correction of scope of assessment to match BEACH Report from Haleiwa Ali'i to Waialua Bay.
Waialua/Kaiaka Bays Nearshore waters to 60' from Puaena Point to a point 1.5 miles W of Kaiaka Pt.	HIW00083	Wet/Dry Criteria	Correction	TC	Correction of mislabeled wet/dry criteria to WET.
War Memorial Natatorium	HI624259	Wet/Dry Criteria	Correction	TC	Correction of mislabeled wet/dry criteria from WET to DRY.

MOLOKAI

Scope of Assessment	Geocode ID	Pollutant	Decision Action	Summary Rationale	Reason for Changes
Papalaua	HI462219		Correction	TC	Delete scope of assessment entry. Correction of misplaced island from Molokai to Maui.
South Molokai Coast-nearshore waters to 18' from SW point-Waialua	HIW00052	Wet/Dry Criteria	Correction	TC	Correction of mislabeled wet/dry criteria to DRY.

LANAI					
Scope of Assessment	Geocode ID	Pollutant	Decision Action	Summary Rationale	Reason for Changes
Kawaiu Gulch-Makole Pt.	HIW00133	TN	Delist Pollutant	NND, DL	DELIST: cat. 2; The assessment of data documents indicate that applicable WQS are now being attained for entero, resulting in a category change from 5 to 2.
Manele Bay Beach	HIW00178	TN	Delist Pollutant	NND, DL	DELIST: cat. 2; The assessment of data documents indicate that applicable WQS are now being attained for entero, resulting in a category change from 5 to 2.

MAUI					
Scope of Assessment	Geocode ID	Pollutant	Decision Action	Summary Rationale	Reason for Changes
Ahihi-Kina'u Natural Area Reserve	HIW00084	Waterbody Type	Correction	TC	Correction of mislabeled waterbody type from Bay to Coastal.
Hanaka'o'o Beach Co. Pk.	HI797917	entero	Delist Pollutant	NND, DL	DELIST: cat. 2; The assessment of data documents indicate that applicable WQS are now being attained for entero, resulting in a category change from 5 to 2.
		TN		NND, A2	Assign cat. 2; The assessment of new data documents indicate that applicable WQS are being attained.
		TP	List Pollutant	NND, NL	ASSIGN cat. 5; The assessment of new data documents indicate that applicable WQS are not being attained.
		chl-a	List Pollutant	NND, NL	ASSIGN cat. 5; The assessment of new data documents indicate that applicable WQS are not being attained.
		NH4	List Pollutant	NND, NL	ASSIGN cat. 5; The assessment of new data documents indicate that applicable WQS are not being attained.
Honokowai Beach Co. Pk.	HI412391	Scope of Assessment	Correction	TC	Correction of scope of assessment to match BEACH Report. Delete (Hale Onoloa Condo).
		entero		NND, A2	Assign cat. 2; The assessment of new data documents indicate that applicable WQS are being attained.
		TN		NND, A2	Assign cat. 2; The assessment of new data documents indicate that applicable WQS are being attained.
		NO3+NO2	List Pollutant	NND, NL	ASSIGN cat. 5; The assessment of new data documents indicate that applicable WQS are not being attained.
		TP	Delist Pollutant	NND, DL	DELIST: cat. 2; The assessment of data documents indicate that applicable WQS are now being attained for entero, resulting in a category change from 5 to 2.

MAUI					
Scope of Assessment	Geocode ID	Pollutant	Decision Action	Summary Rationale	Reason for Changes
		NH4	List Pollutant	NND, NL	ASSIGN cat. 5; The assessment of new data documents indicate that applicable WQS are not being attained.
Honolua Bay	HI280286	entero		NND, A2	Assign cat. 2; The assessment of new data documents indicate that applicable WQS are being attained.
		TN	List Pollutant	NND, NL	ASSIGN cat. 5; The assessment of new data documents indicate that applicable WQS are not being attained.
		NO3+NO2	List Pollutant	NND, NL	ASSIGN cat. 5; The assessment of new data documents indicate that applicable WQS are not being attained.
		TP	List Pollutant	NND, NL	ASSIGN cat. 5; The assessment of new data documents indicate that applicable WQS are not being attained.
		chl-a	List Pollutant	NND, NL	ASSIGN cat. 5; The assessment of new data documents indicate that applicable WQS are not being attained.
		NH4	List Pollutant	NND, NL	ASSIGN cat. 5; The assessment of new data documents indicate that applicable WQS are not being attained.
Ka'anapali (Kahekili Beach)	HI643627	TN		NND, A2	Assign cat. 2; The assessment of new data documents indicate that applicable WQS are being attained.
		NO3+NO2	List Pollutant	NND, NL	ASSIGN cat. 5; The assessment of new data documents indicate that applicable WQS are not being attained.
		TP		NND, A2	Assign cat. 2; The assessment of new data documents indicate that applicable WQS are being attained.
		chl-a		NND, A2	Assign cat. 2; The assessment of new data documents indicate that applicable WQS are being attained.
		NH4	List Pollutant	NND, NL	ASSIGN cat. 5; The assessment of new data documents indicate that applicable WQS are not being attained.

MAUI					
Scope of Assessment	Geocode ID	Pollutant	Decision Action	Summary Rationale	Reason for Changes
Ka'anapali (Sheraton Kaanapali Shoreline)	HIW00022	entero		NND, A2	Assign cat. 2; The assessment of new data documents indicate that applicable WQS are being attained.
Kahana (Mahinahina Condo Shoreline)	HI160433	entero		NND, A2	Assign cat. 2; The assessment of new data documents indicate that applicable WQS are being attained.
		TN	List Pollutant	NND, NL	ASSIGN cat. 5; The assessment of new data documents indicate that applicable WQS are not being attained.
		NO3+NO2	List Pollutant	NND, NL	ASSIGN cat. 5; The assessment of new data documents indicate that applicable WQS are not being attained.
		NH4	List Pollutant	NND, NL	ASSIGN cat. 5; The assessment of new data documents indicate that applicable WQS are not being attained.
Kalama Beach Co. Park (Beach)	HIW00023	TP	List Pollutant	NND, NL	ASSIGN cat. 5; The assessment of new data documents indicate that applicable WQS are not being attained.
Kalama Beach Co. Park (Cove Park)	HI705118	TN	List Pollutant	NND, NL	ASSIGN cat. 5; The assessment of new data documents indicate that applicable WQS are not being attained.
		NO3+NO2	List Pollutant	NND, NL	ASSIGN cat. 5; The assessment of new data documents indicate that applicable WQS are not being attained.
		TP	List Pollutant	NND, NL	ASSIGN cat. 5; The assessment of new data documents indicate that applicable WQS are not being attained.
		chl-a	List Pollutant	NND, NL	ASSIGN cat. 5; The assessment of new data documents indicate that applicable WQS are not being attained.
		NH4	List Pollutant	NND, NL	ASSIGN cat. 5; The assessment of new data documents indicate that applicable WQS are not being attained.

MAUI					
Scope of Assessment	Geocode ID	Pollutant	Decision Action	Summary Rationale	Reason for Changes
Kalepolepo Beach	HI647373	entero		NND, A2	Assign cat. 2; The assessment of new data documents indicate that applicable WQS are being attained.
Kamaole Beach 1	HI761092	TN		NND, A2	Assign cat. 2; The assessment of new data documents indicate that applicable WQS are being attained.
		NO3+NO2	List Pollutant	NND, NL	ASSIGN cat. 5; The assessment of new data documents indicate that applicable WQS are not being attained.
		TP	List Pollutant	NND, NL	ASSIGN cat. 5; The assessment of new data documents indicate that applicable WQS are not being attained.
		NH4	List Pollutant	NND, NL	ASSIGN cat. 5; The assessment of new data documents indicate that applicable WQS are not being attained.
Kanaha Beach (Kaa Shoreline)	HIW00020	entero		NND, A2	Assign cat. 2; The assessment of new data documents indicate that applicable WQS are being attained.
Kihei Coast-Cove Park*	HIW00167	Wet/Dry Criteria	Correction	TC	Correction of mislabeled wet/dry criteria to DRY.
Kihei Coast-Estuary Boat Ramp	HIW00166	Wet/Dry Criteria	Correction	TC	Correction of mislabeled wet/dry criteria to DRY.
Kihei Coast-Kalepolepo	HIW00039	Wet/Dry Criteria	Correction	TC	Correction of mislabeled wet/dry criteria to DRY.
Kihei Coast-Kaonoulu Estuary	HIW00040	Wet/Dry Criteria	Correction	TC	Correction of mislabeled wet/dry criteria to NA.
Kihei Coast-Kealia Pond	HIW00070	Wet/Dry Criteria	Correction	TC	Correction of mislabeled wet/dry criteria to NA.
Kihei Coast-Keawakapu*	HIW00074	Wet/Dry Criteria	Correction	TC	Correction of mislabeled wet/dry criteria to DRY.
Kihei Coast-Kulanihakai	HIW00043	Wet/Dry Criteria	Correction	TC	Correction of mislabeled wet/dry criteria to DRY.
Kihei Coast-Lipoa South	HIW00072	Wet/Dry Criteria	Correction	TC	Correction of mislabeled wet/dry criteria to DRY.
Kihei Coast-Luana Kai	HIW00041	Wet/Dry Criteria	Correction	TC	Correction of mislabeled wet/dry criteria to DRY.

MAUI					
Scope of Assessment	Geocode ID	Pollutant	Decision Action	Summary Rationale	Reason for Changes
Kihei Coast-Maui Coast	HIW00073	Wet/Dry Criteria	Correction	TC	Correction of mislabeled wet/dry criteria to DRY.
Kihei Coast-Mokulele	HIW00042	Wet/Dry Criteria	Correction	TC	Correction of mislabeled wet/dry criteria to DRY.
Kihei Coast-South Kam II	HIW00071	Wet/Dry Criteria	Correction	TC	Correction of mislabeled wet/dry criteria to DRY.
Ku'au Bay	HI276573	entero		NND, A2	Assign cat. 2; The assessment of new data documents indicate that applicable WQS are being attained.
Lahaina Harbor	HIW00137	Waterbody Type	Correction	TC	Correction of mislabeled waterbody type from Coastal to Bay.
Ma'alaea Boat Harbor station*	HIW00082	Waterbody Type	Correction	TC	Correction of mislabeled waterbody type from Coastal to Bay.
Mai Poina Oe Iau Beach Co. Pk. (Kihei N. station)	HI715975	entero		NND, A2	Assign cat. 2; The assessment of new data documents indicate that applicable WQS are being attained.
Makena Landing Beach	HI245556	entero		NND, A2	Assign cat. 2; The assessment of new data documents indicate that applicable WQS are being attained.
Maliko Bay	HI423064	entero	List Pollutant	NND, NL	ASSIGN cat. 5; The assessment of new data documents indicate that applicable WQS are not being attained.
Malu'aka Beach	HI847607	entero		NND, A2	Assign cat. 2; The assessment of new data documents indicate that applicable WQS are being attained.
Mokapu Beach Park	HI861961	entero		NND, A2	Assign cat. 2; The assessment of new data documents indicate that applicable WQS are being attained.
Mokule'ia Beach	HI977299	entero		NND, A2	Assign cat. 2; The assessment of new data documents indicate that applicable WQS are being attained.
Napili Bay	HI764060	entero		NND, A2	Assign cat. 2; The assessment of new data documents indicate that applicable WQS are being attained.

MAUI					
Scope of Assessment	Geocode ID	Pollutant	Decision Action	Summary Rationale	Reason for Changes
		TN		NND, A2	Assign cat. 2; The assessment of new data documents indicate that applicable WQS are being attained.
		NO3+NO2	List Pollutant	NND, NL	ASSIGN cat. 5; The assessment of new data documents indicate that applicable WQS are not being attained.
		TP	List Pollutant	NND, NL	ASSIGN cat. 5; The assessment of new data documents indicate that applicable WQS are not being attained.
		chl-a	List Pollutant	NND, NL	ASSIGN cat. 5; The assessment of new data documents indicate that applicable WQS are not being attained.
		NH4	List Pollutant	NND, NL	ASSIGN cat. 5; The assessment of new data documents indicate that applicable WQS are not being attained.
Olowalu (Shorefront)	HIW00021	entero		NND, A2	Assign cat. 2; The assessment of new data documents indicate that applicable WQS are being attained.
Oneloa Beach (Big Beach) (Makena Bch Station)	HI279887	entero		NND, A2	Assign cat. 2; The assessment of new data documents indicate that applicable WQS are being attained.
Oneuli Beach	HI756040	entero		NND, A2	Assign cat. 2; The assessment of new data documents indicate that applicable WQS are being attained.
Palauea Beach Park	HI997014	entero		NND, A2	Assign cat. 2; The assessment of new data documents indicate that applicable WQS are being attained.
Papalaua	HI462219	Geocode ID	Correction	TC	Correction of mislabeled geocode ID to match BEACH Report from HIW00065 to HI462219. Moved from misplaced Molokai.
		entero		NND, A2	Assign cat. 2; The assessment of new data documents indicate that applicable WQS are being attained.
Polo Beach Park	HI339656	entero		NND, A2	Assign cat. 2; The assessment of new data documents indicate that applicable WQS are being attained.

MAUI					
Scope of Assessment	Geocode ID	Pollutant	Decision Action	Summary Rationale	Reason for Changes
Po'olenalena Beach	HI684864	entero		NND, A2	Assign cat. 2; The assessment of new data documents indicate that applicable WQS are being attained.
Puamana Beach Co. Park	HI167153	entero		NND, A2	Assign cat. 2; The assessment of new data documents indicate that applicable WQS are being attained.
Pu'u ola'i (Small Beach)	HI157533	entero		NND, A2	Assign cat. 2; The assessment of new data documents indicate that applicable WQS are being attained.
Ukumehame Beach Co. Pk.	HI814309	entero	Delist Pollutant	NND, DL	DELIST: cat. 2; The assessment of data documents indicate that applicable WQS are now being attained for entero, resulting in a category change from 5 to 2.
Ulua Beach Park	HI588333	entero		NND, A2	Assign cat. 2; The assessment of new data documents indicate that applicable WQS are being attained.
Wahikuli State Wayside Park	HI169380	entero		NND, A2	Assign cat. 2; The assessment of new data documents indicate that applicable WQS are being attained.
Waiehu Beach Co. Park	HI916183	entero		NND, A2	Assign cat. 2; The assessment of new data documents indicate that applicable WQS are being attained.
Waihe'e	HI343702	entero		NND, A2	Assign cat. 2; The assessment of new data documents indicate that applicable WQS are being attained.
West Maui Coast-Hanakeana Cove	HIW00044	Wet/Dry Criteria	Correction	TC	Correction of mislabeled wet/dry criteria to DRY.
West Maui Coast-Kahana Cove	HIW00045	Wet/Dry Criteria	Correction	TC	Correction of mislabeled wet/dry criteria to DRY.
West Maui Coast-Kahana Sunset	HIW00075	Wet/Dry Criteria	Correction	TC	Correction of mislabeled wet/dry criteria to DRY.
West Maui Coast-Kahana Village	HIW00076	Wet/Dry Criteria	Correction	TC	Correction of mislabeled wet/dry criteria to DRY.
West Maui Coast-Kaopala Bay	HIW00046	Wet/Dry Criteria	Correction	TC	Correction of mislabeled wet/dry criteria to DRY.

MAUI					
Scope of Assessment	Geocode ID	Pollutant	Decision Action	Summary Rationale	Reason for Changes
West Maui Coast-Lokelani	HIW00077	Wet/Dry Criteria	Correction	TC	Correction of mislabeled wet/dry criteria to DRY.
West Maui Coast-Napili Bay	HIW00078	Wet/Dry Criteria	Correction	TC	Correction of mislabeled wet/dry criteria to DRY.
West Maui Coast-nearshore waters to 60' from Honolulu - Lahaina	HIW00060	Wet/Dry Criteria	Correction	TC	Correction of mislabeled wet/dry criteria to DRY.
West Maui Coast-S-Turns (Pohaku)	HIW00047	Wet/Dry Criteria	Correction	TC	Correction of mislabeled wet/dry criteria to DRY.
West Maui-Papakea	HIW00079	Wet/Dry Criteria	Correction	TC	Correction of mislabeled wet/dry criteria to DRY.
West Maui-Puamana	HIW00080	Wet/Dry Criteria	Correction	TC	Correction of mislabeled wet/dry criteria to DRY.

HAWAII

Scope of Assessment	Geocode ID	Pollutant	Decision Action	Summary Rationale	Reason for Changes
2nd Beach (next to Mahaiula)	HI616452	entero		NND, A2	Assign cat. 2; The assessment of new data documents indicate that applicable WQS are being attained.
Banyan's Surfing Area	HI713314	entero	List Pollutant	NND, NL	ASSIGN cat. 5; The assessment of new data documents indicate that applicable WQS are not being attained.
Hakalau Co. Pk.	HI138086	entero		NND, A2	Assign cat. 2; The assessment of new data documents indicate that applicable WQS are being attained.
Hilo Bay (Boat Landing)	HIW00027	entero		NND, A2	Assign cat. 2; The assessment of new data documents indicate that applicable WQS are being attained.
Hilo Bay (Canoe Beach)	HI315019	entero	Delist Pollutant	NND, DL	DELIST: cat. 2; The assessment of data documents indicate that applicable WQS are now being attained for chl-a, resulting in a category change from 5 to 2.
		TN	List Pollutant	NND, NL	ASSIGN cat. 5; The assessment of new data documents indicate that applicable WQS are not being attained.
		NO3+NO2	List Pollutant	NND, NL	ASSIGN cat. 5; The assessment of new data documents indicate that applicable WQS are not being attained.
		TP	List Pollutant	NND, NL	ASSIGN cat. 5; The assessment of new data documents indicate that applicable WQS are not being attained.
		chl-a		NND, A2	Assign cat. 2; The assessment of new data documents indicate that applicable WQS are being attained.
		NH4	List Pollutant	NND, NL	ASSIGN cat. 5; The assessment of new data documents indicate that applicable WQS are not being attained.
Hilo Bay (Lighthouse)	HIW00028	entero	Delist Pollutant	NND, DL	DELIST: cat. 2; The assessment of data documents indicate that applicable WQS are now being attained for chl-a, resulting in a category change from 5 to 2.

HAWAII

Scope of Assessment	Geocode ID	Pollutant	Decision Action	Summary Rationale	Reason for Changes
		chl-a	Delist Pollutant	NND, DL	DELIST: cat. 2; The assessment of data documents indicate that applicable WQS are now being attained for chl-a, resulting in a category change from 5 to 2.
Honokohau Boat Harbor	HIW00099	Wet/Dry Criteria	Correction	TC	Correction of mislabeled wet/dry criteria to DRY.
Honoli'i Beach Co. Park	HI857411	entero	Delist Pollutant	NND, DL	DELIST: cat. 2; The assessment of data documents indicate that applicable WQS are now being attained for chl-a, resulting in a category change from 5 to 2.
Ho'okena	HI152572	Waterbody Type	Correction	TC	Correction of mislabeled waterbody type from Kona to Coastal.
		Wet/Dry Criteria	Correction	TC	Correction of mislabeled wet/dry criteria from NA to DRY.
		entero		NND, A2	Assign cat. 2; The assessment of new data documents indicate that applicable WQS are being attained.
James Kealoha Park	HI670254	Wet/Dry Criteria	Correction	TC	Correction of mislabeled wet/dry criteria from WET to NA.
Kalapana Beach (new) (Harry K. Brown Beach Co. Park)	HI542822	entero		NND, A2	Assign cat. 2; The assessment of new data documents indicate that applicable WQS are being attained.
Kamakaokahonu	HIW00032	entero	Delist Pollutant	NND, DL	DELIST: cat. 2; The assessment of data documents indicate that applicable WQS are now being attained for chl-a, resulting in a category change from 5 to 2.
Kapoho Bay	HI391407	entero	List Pollutant	NND, NL	ASSIGN cat. 5; The assessment of new data documents indicate that applicable WQS are not being attained.
Kapu'a Bay	HIW00067	Waterbody Type	Correction	TC	Correction of mislabeled waterbody type from Kona to Coastal.
		Wet/Dry Criteria	Correction	TC	Correction of mislabeled wet/dry criteria from NA to DRY.
Ka'upulehu	HI770607	entero		NND, A2	Assign cat. 2; The assessment of new data documents indicate that applicable WQS are being attained.

HAWAII					
Scope of Assessment	Geocode ID	Pollutant	Decision Action	Summary Rationale	Reason for Changes
Kawaihae Harbor	HI978783	Waterbody Type	Correction	TC	Correction of mislabeled waterbody type from Kona to Bay.
		Wet/Dry Criteria	Correction	TC	Correction of mislabeled wet/dry criteria from NA to DRY.
Kawaihae Harbor/Pelekane Bay	HIW00155	Waterbody Type	Correction	TC	Correction of mislabeled waterbody type from Kona to Bay.
		Wet/Dry Criteria	Correction	TC	Correction of mislabeled wet/dry criteria from NA to DRY.
Kealakekua Bay (Off Curio Stand)	HIW00183	entero		NND, A2	Assign cat. 2; The assessment of new data documents indicate that applicable WQS are being attained.
Kealia Beach	HI514168	Waterbody Type	Correction	TC	Correction of mislabeled waterbody type from Kona to Coastal.
		Wet/Dry Criteria	Correction	TC	Correction of mislabeled wet/dry criteria from NA to DRY.
Keaukaha Beach Park	HI849313	Wet/Dry Criteria	Correction	TC	Correction of mislabeled wet/dry criteria from WET to NA.
					Assign cat. 2; The assessment of new data documents indicate that applicable WQS are being attained.
Kehena	HI459942	entero		NND, A2	Assign cat. 2; The assessment of new data documents indicate that applicable WQS are being attained.
					DELIST: cat. 2; The assessment of data documents indicate that applicable WQS are now being attained for chl-a, resulting in a category change from 5 to 2.
Kolekole Beach Co. Park	HI693485	entero	Delist Pollutant	NND, DL	
					Assign cat. 2; The assessment of new data documents indicate that applicable WQS are being attained.
Laupahoehoe Beach Co. Park	HI380623	entero		NND, A2	
Lehia Beach	HI691720	Wet/Dry Criteria	Correction	TC	Correction of mislabeled wet/dry criteria from WET to NA.
					Assign cat. 2; The assessment of new data documents indicate that applicable WQS are being attained.
		entero		NND, A2	
Leleiwi Beach Co. Pk.	HI540868	Wet/Dry Criteria	Correction	TC	Correction of mislabeled wet/dry criteria from WET to NA.
Leleiwi Beach Co. Pk. (Richardson Ocean Ctr.)	HIW00030	Wet/Dry Criteria	Correction	TC	Correction of mislabeled wet/dry criteria from WET to NA.

HAWAII					
Scope of Assessment	Geocode ID	Pollutant	Decision Action	Summary Rationale	Reason for Changes
Manini'owali	HI720408	entero		NND, A2	Assign cat. 2; The assessment of new data documents indicate that applicable WQS are being attained.
Miloli'i Beach	HI470112	Waterbody Type	Correction	TC	Correction of mislabeled waterbody type from Kona to Coastal.
		Wet/Dry Criteria	Correction	TC	Correction of mislabeled wet/dry criteria from NA to DRY.
		entero		NND, A2	Assign cat. 2; The assessment of new data documents indicate that applicable WQS are being attained.
Old Kona Airport St. Rec. Area	HI256093	entero		NND, A2	Assign cat. 2; The assessment of new data documents indicate that applicable WQS are being attained.
Onekahakaha Beach Co. Pk. (Puhi Bay #3)	HIW00029	entero		NND, A2	Assign cat. 2; The assessment of new data documents indicate that applicable WQS are being attained.
Pine Trees	HI320616	entero		NND, A2	Assign cat. 2; The assessment of new data documents indicate that applicable WQS are being attained.
Punalu'u	HI224651	entero		NND, A2	Assign cat. 2; The assessment of new data documents indicate that applicable WQS are being attained.
Wailoa River (Boat Ramp)	HIW00172	Wet/Dry Criteria	Correction	TC	Correction of mislabeled wet/dry criteria from WET to NA.
		TN	List Pollutant	NND, NL	ASSIGN cat. 5; The assessment of new data documents indicate that applicable WQS are not being attained.
		NO3+NO2	List Pollutant	NND, NL	ASSIGN cat. 5; The assessment of new data documents indicate that applicable WQS are not being attained.
		TP	List Pollutant	NND, NL	ASSIGN cat. 5; The assessment of new data documents indicate that applicable WQS are not being attained.
		NH4	List Pollutant	NND, NL	ASSIGN cat. 5; The assessment of new data documents indicate that applicable WQS are not being attained.

HAWAII					
Scope of Assessment	Geocode ID	Pollutant	Decision Action	Summary Rationale	Reason for Changes
Wawaloli Beach	HI643938	entero		NND, A2	Assign cat. 2; The assessment of new data documents indicate that applicable WQS are being attained.
Whittington Beach Co. Pk.	HI720900	entero		NND, A2	Assign cat. 2; The assessment of new data documents indicate that applicable WQS are being attained.

CHAPTER 1: LIST OF REFERENCES

Byappanahalli, M and R. Fujioka, 2004. Indigenous soil bacteria and low moisture may limit but allow fecal bacteria to multiply and become a minor population in topical soils. *Water Science and Technology*. vol. 50, 1:27-32.

EPA Office of Water, Office of Research and Development. 2007. *Report of the Experts Scientific Workshop on Critical Research Needs For the Development of New or Revised Recreational Water Quality Criteria*. EPA 823-R-07-006. (June 15, 2007).

EPA Monitoring and Assessing Water Quality (n.d.). Retrieved September 27, 2006, from <http://water.epa.gov/lawsregs/guidance/cwa/305b/index.cfm>

EPA - Watershed Branch. 2005. *Guidance for 2006 Assessment, Listing and Reporting Requirements Pursuant to Sections 303(d), 305(b) and 314 of the Clean Water Act (July 29, 2005)*.

EPA - Watershed Branch. 2009. *Information Concerning 2010 Clean Water Act Sections 303(d), 305(b) and 314 Integrated Reporting and Listing Decisions (May 5, 2009)*.

Gruber, S.J., Kay, L.M., Kolb, R., and Henry, K. 2005. Mission Bay bacterial source identification study-A Clean Beaches initiative grant helps track causes of contamination. *Stormwater*. vol.6, 3:40-51.

U.S. EPA. 1986. Ambient water quality criteria for bacteria - 1986. EPA 44015-84-002, Office of Water Regulations and Standards, U.S. Environmental Protection Agency, Washington, DC.

U.S. EPA. *Water Quality Standards for Coastal and Great Lakes Recreation Waters; Final Rule*. Federal Register 69:220 (16 November 2004).

(this page intentionally left blank)