

CLEAN WATER BRANCH SAMPLING STATION INFORMATION

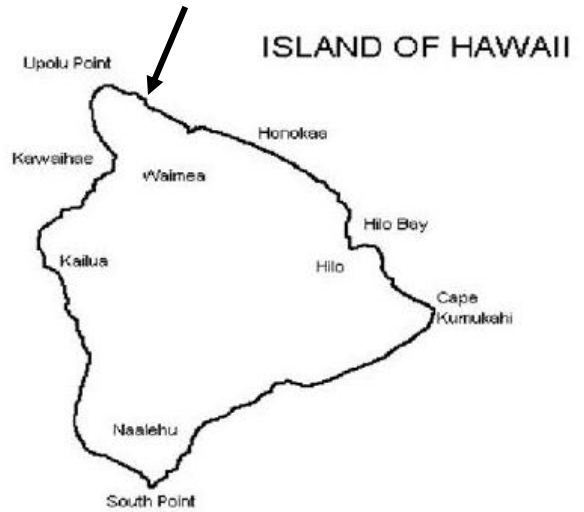
STORET NO.: 001154

LOCATION: Pololu Beach

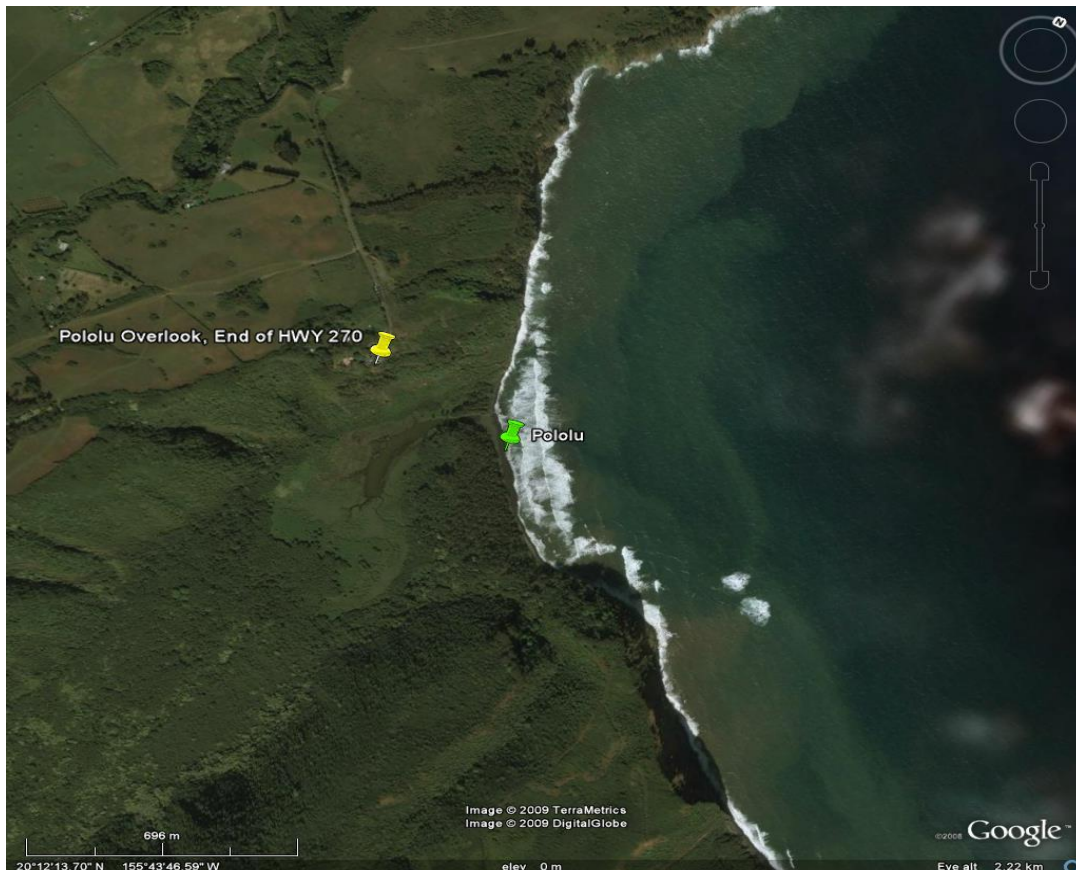
LATITUDE: 20° 12' 11.3"

LONGITUDE: 155° 43' 49.0"

DATE: 6/29/09



Description: Station located in North Kohala at the end of Akoni Pule Highway (270). From the Pololu Valley Overlook hike down the trail into the Valley. From the bottom of the trail, continue east and cross over a dry stream bed. Sample site is located approximately 100 yards east of this dry stream bed.





Head of trail down into Pololu Valley at the Pololu Overlook at the end on Highway 270



Photo from the trail. Sample site at the yellow arrow and red arrow is in the area of the stream mouth. Stream normally dry.



Sample site from the stream mouth.