

Chapter 1
Marine Waters

CHAPTER 1 TABLE OF CONTENTS

PART A. SCOPE OF WATERS	4
PART B. MONITORING AND ASSESSMENT.....	4
B.1. Monitoring Program	4
Monitoring Strategy Overview	4
Microbiological Sampling	5
Chemical Sampling.....	5
Laboratory Analytical Support	5
Quality Assurance/Quality Control.....	6
Data Storage, Management, and Sharing.....	6
B.2. Assessment Methodology.....	6
Data Source.....	6
Assessment Methodology	7
Assessment Utilizing Hawaii Water Quality Standards	9
Assessment Unit Methodology.....	11
Assessment Codes (Geocodes)	11
B.3. Assessment Results.....	11

LIST OF FIGURES AND TABLES

FIGURE 1: Flow Chart of Listing/De-listing Process for Conventional Pollutants.....	8
TABLE 1. Category Totals by Island	12
TABLE 2. Delisted Marine Waterbodies.....	12
TABLE 3. Newly Impaired Marine Waters.....	13
TABLE 4. Category List of Changes to 2006 Listed Coastal Waters	15

PART A. SCOPE OF WATERS

This chapter of the 2008/2010 Integrated Report covers all waters of salinity more than 0.5 parts per thousand. Assessment units for the 2008/2010 Integrated Report remain the same as the assessment units applied in the previous report. Waterbodies are partitioned according to the Hawaii Administrative Rules (HAR) §11-54 by type and then listing renewed accordingly. Please see methodology section in Part B.2. for details regarding decision units for attainment decisions.

PART B. MONITORING AND ASSESSMENT

B.1. Monitoring Program

This part of the 2008/2010 Integrated Report discusses HDOH's monitoring program for marine waters. The entire monitoring program is examined from strategies and procedures to data assessment.

Monitoring Strategy Overview

Two main types of surface water monitoring data are used in this report: bacteriological and chemical. Bacteriological monitoring of the shoreline areas is conducted under the auspices of the HDOH Clean Water Branch (CWB) Beach Monitoring program and the guidance of HDOH's Beach Monitoring Quality Assurance Project Plan (QAPP). CWB coastal chemistry sampling was limited to shoreline areas for the period reviewed in this report.

EPA's STORET database is the repository of data and information collected by HDOH. Waterbody assessments utilize the most current data and information from these systems. For the 2008/2010 Integrated Report, HDOH retrieved data from STORET for the period starting in January 2006 and ending in December 2009. The end-users of the STORET database system include not only government agencies but consultants, students, and the general public.

Assisted monitoring programs contribute invaluable service not only to the communities but to government as well. In Hawaii, an example of data generated by monitoring groups is the HDOH's monitoring program partnership with the Hanalei Watershed Hui and the Surfrider organizations.

Collaboration between HDOH and other state and federal agencies, including private consulting firms, is another key component of the monitoring program. CWA §401 and §402 permits stipulate water quality monitoring requirements applied to permit holders. Monitoring conducted by permittees provides a source of data from which the State's monitoring program also benefits. Water quality data generated by permittees result in greater statewide coverage and comprehensive assessments at no increase in cost to the HDOH program. The coordination between multiple agencies and permit applicants also provides for expediting the permit process through early plan reviews and dialogues in preconstruction meetings.

Microbiological Sampling

The CWB microbiological sampling program focuses mainly on shoreline waters throughout the state for the purpose of assuring the safety of the swimmers, surfers, divers, and other recreational users of the near shore waters. This program serves two purposes. First, it identifies those areas where there is a potential for health related risks associated with the recreational use of shoreline waters. Secondly, monitoring provides an ongoing baseline from which to establish trends in the future and from which to determine if additional sample results show unusual or abnormal levels of indicator bacteria (i.e., indicating possible contamination, such as a sewage leak).

Water samples are analyzed for enterococci, the recommended EPA indicator bacteria for marine recreational waters. EPA has allowed Hawaii to use *Clostridium perfringens*, in conjunction with enterococci, as a secondary tracer to help confirm high bacterial indicator counts.

For the period between January 2006 and December 2009, the CWB bacteriological monitoring program collected samples at approximately 332 stations throughout the state (Kauai, 52 stations; Oahu, 147; Maui, 65; and Hawaii, 68). The approximate 332 stations are among the 385 beach stations established throughout the state, most of which are sampled on a rotational basis. The sites are monitored on a twice-weekly (core sites) or bi-weekly (rotational sites) basis.

Chemical Sampling

The CWB periodically collects shoreline chemistry samples for nutrient analysis, in support of the Polluted Runoff Control Program. The chemistry parameters analyzed include Nitrate+Nitrite Nitrogen, Ammonia Nitrogen, Total Nitrogen, Total Phosphorus, and Chlorophyll-a.

The coastal offshore chemistry monitoring program is designed to monitor conditions in the marine environment, while compiling a database from which a baseline can be established. As mentioned above, offshore sampling has been temporarily suspended. This is due to personnel and resource limitations and an increase in the frequency of shoreline sampling in the beach monitoring program.

Laboratory Analytical Support

The HDOH employed the use of three Hawaii-based laboratories for analysis of samples: the State DOH Laboratory, Natural Energy Laboratory of Hawaii (NELH), and Microbiology Consulting Services, LLC (MCS). The Environmental Health Analytical Services Branch (EHASB) is responsible for the analysis of the samples collected by HDOH personnel. The two basic types of samples, microbiological and chemical, are each handled by separate sections within EHASB of the State Laboratories Division. Microbiological samples for West Hawaii (Kona) were handled by NELH until 2007. MCS began microbiological sampling analysis for West Hawaii in July 2007. The State maintains microbiology laboratories on each of the four largest islands, Kauai, Oahu, Maui, and Hawaii, which conducts the analysis for their respective islands. Only the Oahu laboratory is currently capable of conducting chemical analyses. Samples from the other islands are air-shipped to the Oahu laboratory for chemical analysis.

Quality Assurance/Quality Control

The monitoring program quality assurance/quality control is governed by the CWB Beach Monitoring Quality Assurance Project Plan (QAPP) and the Coastal Chemistry Monitoring Quality Assurance Project Plan.

Data Storage, Management, and Sharing

The main repository for monitoring data is EPA's STORage and RETrieval (STORET) system. All post 1999 sampling data obtained from the CWB's fixed network of routine monitoring stations is first compiled into a CWB Access database, then entered into EPA's STORET system. Data prior to 1999 are stored in the "Legacy STORET Database". As of 2007, monitoring data are transferred into STORET via the Water Quality Exchange (WQX) system. The data are then uploaded to EPA's main database which can be accessed via the internet. Future plans include development of a SQL based data management interface, and the use of the Exchange Network for data transfer (www.exchangenetwork.net).

Permittee effluent monitoring also generates a significant amount of sampling data. However, the data are only on hard copy, not in electronic form. Although the data are accessible, they must be gathered and then compiled by hand before analysis is performed. Hence, only those involved with or concerned about a specific location normally reviews this type of information. The CWB staff would like to have this data available as an additional source of information (especially in areas where no other sampling may exist), however, other responsibilities have higher priority, and therefore, no progress has been made in inputting this data into STORET.

B.2. Assessment Methodology

Data Sources

A formal call for marine data was made by the previous author of this report. Due to changes in personnel and the tardiness of the 2008/2010 Integrated Report, this report will just be an update of the previous 2006 Report. In order to complete this report in a timely manner, no data from new locations were used. The unused data will be incorporated in the next cycle, the 2012 Report. The list below details the major sources used in the 2008/2010 Integrated Report.

CLEAN WATER BRANCH

With continued funding from EPA's Beaches Environmental Assessment and Coastal Health (BEACH) program, the existing bacteriological shoreline program was able to greatly expand both the number of sites and samples taken. The microbiological dataset extends from 1973 to present. Data from the previous four years (January 2006 through December 2009) were assessed for this report. The CWB Monitoring Section provided a bacteriological dataset of 22,919 samples from the four main Hawaiian Islands. The data were collected following the CWB Beach Monitoring QAPP and are routinely checked by the QA/QC officer.

ENVIRONMENTAL ASSESSMENT COMPANY

EAC is a private research company headed by Richard Brock, PhD. An extensive dataset was provided by Dr. Brock for the south-southeastern coast of Lanai, and the Kona (western) coast of Hawaii. All data was produced following a prepared methodology, complying with the "West

Hawaii Coastal Monitoring Program Monitoring Protocol Guidelines" (May 1992). Laboratory analysis follows Standard Methods (1999).

MARINE RESEARCH CONSULTANTS

MRC is a private research company headed by Steve Dollar, PhD. The ongoing research was prepared for the Makena Resort Corporation to characterize coastal water quality (specifically targeting parameters set forth in HAR 11-54), in Makena, Maui. An extensive dataset was provided, following prepared sampling methodology, documented analysis methodology (Strickland and Parsons 1968, Grasshoff 1983), and utilizing EPA rated laboratories (Marine Analytical Specialists).

HANAIEI WATERSHED HUI

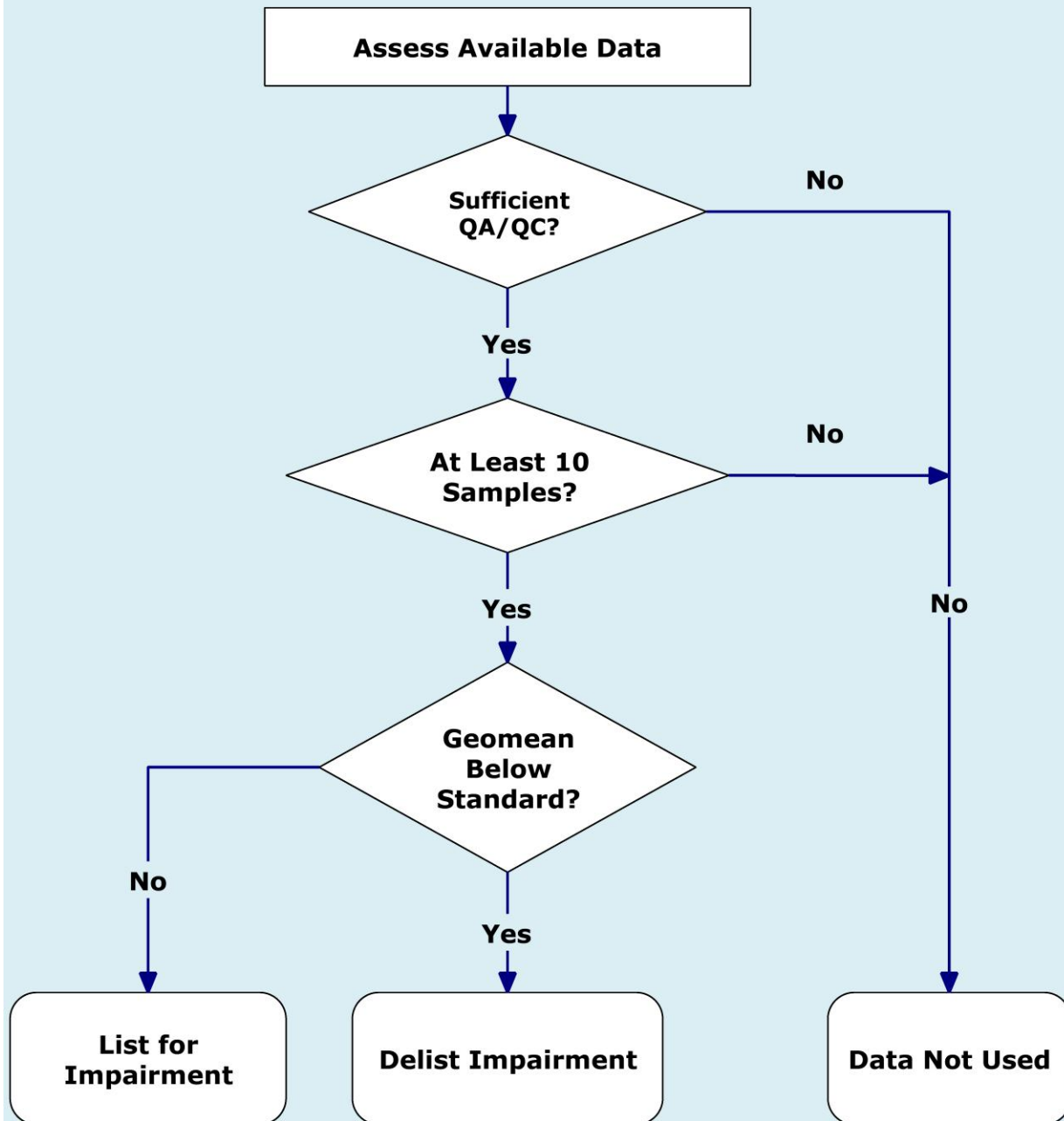
In 2005, the CWB began a cooperative bacteriological sampling program with the Hanalei Watershed Hui, in which the Hui collects samples at several of the northern Kauai stations. Data are collected according to the CWB BEACH Monitoring QAPP.

Assessment Methodology

Data from marine waters monitored between January 2006 and December 2009 were reassessed for this report. Previously evaluated waterbodies were updated with the current information. The assessments performed by CWB staff for this document follow the EPA's Guidance for 2006 Assessment, Listing and Reporting document (EPA 2005) to the maximum extent practicable. The flow chart in Figure 1 shows the basic process used for listing/delisting conventional pollutants. Enterococci data was given a 10% allowable exceedence of the geometric mean standard for the entire data set.

For this cycle, the multi-categorization method as proposed by EPA has been retained, yielding a better categorical description for each waterbody. Please refer back to the Introduction section for the list and description of the categories. Table 4 documents any changes between the 2006 and the 2008/2010 reports, and the justifications for doing so.

FIGURE 1: Flow Chart of Listing/Delisting Process for Conventional Pollutants
(enterococci, TN, NO₃+NO₂, TP, turbidity, chl-a, NH₄, others)



Assessment Utilizing Hawaii Water Quality Standards

The HAR Chapter 11-54 defines the state standards for particular parameters for Hawaii waters, and is defined by both narrative and numerical criteria. §11-54-1.1 defines a general policy of water quality anti-degradation for all water types and is as follows:

- (a) Existing uses and the level of water quality necessary to protect the existing uses shall be maintained and protected.
- (b) Where the quality of the waters exceed levels necessary to support propagation of fish, shellfish, and wildlife and recreation in and on the water, that quality shall be maintained and protected unless the director finds, after full satisfaction of the intergovernmental coordination and public participation provisions of the state's continuing planning process, that allowing lower water quality is necessary to accommodate important economic or social development in the area in which the waters are located. In allowing such degradation on lower water quality, the director shall assure water quality adequate to protect existing uses fully. Further, the director shall assure that there shall be achieved the highest statutory and regulatory requirements for all new and existing point sources and all cost-effective and reasonable best management practices for nonpoint source control.
- (c) Where existing high quality waters constitute an outstanding resource, such as waters of national and state parks and wildlife refuges and waters of exceptional recreational or ecological significance, that water quality shall be maintained and protected.

HAR §11-54-3(c) defines classifications for marine waters. Marine waterbodies are separated by type into three main waterbody categories: embayment, open coastal, and oceanic. The classification uses a tiered system, defining two Classes, "AA" and "A". Class AA waters are described as: "It is the objective of class AA waters that these waters remain in their natural pristine state as nearly as possible with an absolute minimum of pollution or alteration of water quality from any human-caused source or actions. To the extent practicable, the wilderness character of these areas shall be protected." Zones of mixing are not permitted within certain Class AA waters (HAR §11-54-3(c)(1)). Class A waters are describes as: "It is the objective of class A waters that their use for recreational purposes and aesthetic enjoyment be protected. Any other use shall be permitted as long as it is compatible with the protection and propagation of fish, shellfish, and wildlife, and with recreation in and on these waters." New sewage discharges or industrial discharges are not permitted within Class A embayments, with the exception of three industrial discharge types identified in HAR §11-54-3(c)(2).

The embayment and open coastal categories are further refined by inclusion of a wet or dry criterion, typically defined by levels of freshwater input (HAR §11-54-6(a)(3) and HAR §11-54-6(b)(3)). For the previous 2006 Report, these criteria were revised using maps of "Wet and Dry Marine Waters" provided in State 208 Plans and county Water Management Plans. Delineations of embayments and their mouth openings made for the 2006 Report using best professional judgment remain the same.

Two special area categories, Pearl Harbor and Kona (west Hawaii), are defined for marine waters, and establish specific standards for their respective water type. In addition, defined limits are placed upon the application of the standard for enterococci. As stated by HAR §11-54,

the standard is applicable "within 300 meters (one thousand feet) of the shoreline, including natural public bathing or wading areas". Waters outside the 300 meter (one thousand feet) distance from shoreline are covered by EPA's 2004 promulgation of bacteria criteria, which defines bacteria criteria for waters in which the States do not already have criteria in place. Available assessment data were compiled using the defined methodology (geometric mean) and compared to each applicable standard. Each waterbody was categorized according to comparison with each particular standard. A more detailed description of the standards can be accessed at the following website: <http://gen.doh.hawaii.gov/sites/har/AdmRules1/11-54.pdf>.

HIDOH's microbiological sampling utilizes enterococci bacteria density measurements as an indicator of human fecal contamination. However, using this bacterial indicator for the state standard has been found to be problematic in Hawaii and other BEACH programs across the country. Several studies have shown that enterococci may not be a reliable indicator in tropical locations such as Hawaii because it can multiply outside of the human body, and is also found in fecal matter of various wildlife, such as feral pigs.¹ Additionally, a 2005 study at Mission Bay, San Diego, California focused upon tracking causes of bacterial contamination, and found that "...fecal coliform and *Enterococcus* bacteria can survive for prolonged periods of time in coastal storm drains..." and that "...the majority of the indicator bacteria in Mission Bay originates from birds and that the initial load generated from avian sources can then be amplified by irrigation runoff, storm drains, intertidal sediments, and the wrack line" (Gruber et al., 2005).²

Clostridium perfringens has validity as an effective tracer of fecal contamination and is a viable option as an additional tool for monitoring water quality. A report produced by the Experts Scientific Workshop on Critical Research Needs for the Development of New or Revised Recreational Water Quality Criteria attempted to address the applicability of several potential bacterial indicators. The report acknowledges that "The presence of *C. perfringens* (spores) in water, therefore provides evidence of existing human/urban fecal contamination...", and adds that "although methods have been available for some time, confirmation of a robust and consistent method approach should be developed".³ As shown, both organisms have limitations in applicability. Usage of a single organism for water quality characterization therefore, is not desirable. To improve accuracy of Hawaii's water quality monitoring, a two-organism approach is applied, using *C. perfringens* as a companion tracer alongside enterococci.

Although the HAR does not specify the use of *C. perfringens* as a companion indicator for enterococci, as noted earlier, it is allowable by EPA for its use as a tool in Hawaii, and has been employed effectively in daily assessments. As mentioned in the Executive Summary, HIDOH amended Hawaii's water quality criteria for enterococci in May 2009. This action revised the geometric mean from 7 to 35 CFU/100 mL and the single sample maximum limit from 100 to 104 CFU/100 mL.

¹ Byappanahalli, M and R. Fujioka. 2004. Indigenous soil bacteria and low moisture may limit but allow fecal bacteria to multiply and become a minor population in topical soils. *Water Science and Technology*. vol. 50, 1:27-32.

² Gruber, S.J., Kay, L.M., Kolb, R., and Henry, K. 2005 Mission Bay bacterial source identification study-A Clean Beaches initiative grant helps track causes of contamination. *Stormwater*. vol 6,3:40-51.

³ EPA - Office of Water, Office of Research and Development. 2007. *Report of the Experts Scientific Workshop on Critical Research Needs for the Development of New or Revised Recreational Water Quality Criteria*. EPA 823-R-07-006. (June 15, 2007).

Assessment Unit Methodology

Hawaii's topographical structure is comprised of generally short, small watersheds defined by steep mountain walls. Input of fresh waters into the fronting marine waters is generally limited to the specific watershed that feeds those streams. In future cycles it is hoped that watershed names will be included to organize listings for both inland and marine waters. It is hoped that the restructuring of the assessment units may provide a more seamless integration of both water-types.

Two boundaries are defined by HAR 11-54 to guide the application of water quality standards: 1) 1000 feet or 300 meters boundary and, 2) 100 fathom depth contour boundary. The first boundary defines the marine recreational waters as "[w]ithin 300 meters (1000 feet) of the shoreline, including natural public bathing or wading areas..." (HAR 11-54-8(b)(1)). The second boundary defines the open coastal waters and is the "...marine waters bounded by the 183 meter or 600 foot (100 fathom) depth contour and the shoreline..." (HAR 11-54-6(b)(1)). As previously stated, waters outside the 300 meter boundary are covered by EPA's 2004 promulgation of bacteria criteria. Water Quality Standards Maps are located on the CWB website: <http://hawaii.gov/health/environmental/water/cleanwater/wqstd/index.html>.

There are difficulties in combining the boundary guidelines of HAR 11-54 and defined boundary limits for coastal areas. The delineated boundaries were carried over from the previous 2006 Report to this 2008/2010 Report. Each named segment corresponds to an identification alphanumeric geocode (e.g. Royal-Moana Beach is geocode HI898947) and both are used to identify the segments in Tables 1-4. A discussion on the geocodes is found in the following section, Assessment Codes.

Visual assessments were not used for the 2008/2010 Integrated Report. Unlike previous cycles prior to the 2006 Integrated Report, visual assessment data was not available for the 2008/2010 cycle. Listings from previous cycles based on legacy visual assessments have been carried over to the present listing. An example is the carry-over of the 2004 nutrient and turbidity listing for the geographic scope of "Kahului Bay inshore of breakwater". In future cycles, it is possible that these data will be revisited and/or reassessed.

Assessment Codes (Geocodes)

The alphanumeric code (geocode) assigned to each marine waterbody in the 2006 Integrated Report was retained for the 2008/2010 Report. Two sets of geocodes exist in the Hawaii structure, a two-letter alphanumeric (HI) and 3-letter alphanumeric (HIW). The numeric portion of both geocodes is preceded by the state abbreviation (HI) as suggested by EPA protocol. The two-letter geocode is from an existing structure from the EPA BEACH program that identifies recreational waters across the state. The three-letter code was generated in response to areas where BEACH codes do not exist and areas that are divided into small subsections. Each code is comprised of a total of eight characters, and is not ordered.

B.3. Assessment Results

Table 1 below summarizes the results of the assessment. Of the approximately 525 marine waterbody segments already established statewide, 279 (53%) waterbody segments are assessed

for this report. A total of 10 waterbodies were delisted (no category 5 listing present). Table 2 displays the delisted waterbodies. Assessment results for all 10 delisted waterbodies showed that state standards were attained for enterococci, using the enterococci indicator bacteria as mentioned earlier in the document. Mamala Bay (Sand Isl. Offshore) also showed attainment of the state's nutrient standards.

TABLE 1. Category Totals by Island

Island	Total # Assessed Segments	# Segments w/ Listed Pollutant	# Newly Listed Pollutants	# Newly Listed Waterbodies	# Delisted Pollutants	# Delisted Waterbodies
Kauai	36	23	8	0	6	2
Oahu	112	65	33	5	26	8
Molokai	3	3	0	0	0	0
Lanai	8	8	9	2	6	0
Maui	73	72	6	0	9	0
Hawaii	47	33	20	0	2	0
Totals	279	204	76	7	49	10

TABLE 2. Delisted Marine Waterbodies

Island	Scope of Assessment	Geocode	Entero	TN	NO3+NO2	TP	Turb	Other
Kauai	Kapaa Beach County Park	HI972832	A	?	?	?	?	
Kauai	Poipu Beach County Park	HI396850	A	?	?	?	?	
Oahu	Hawaii Kai Station	HIW00117	A	?	?	?	?	
Oahu	Hawaiian Electric Beach Park	HI628972	A	?	?	?	?	
Oahu	Kaawa Beach Park	HI580360	A	?	?	?	?	
Oahu	Kaiona Beach	HI234342	A	?	?	?	?	
Oahu	Kawaikui Beach Park	HI304424	A	?	?	?	?	
Oahu	Mamala Bay (Sand Isl. Offshore)	HIW00014	A	A	A	A	A	chl-a(A), NH4(A)
Oahu	Waialae Beach County Park	HI997368	A	?	?	?	?	
Oahu	Waimea Bay	HIW00128	A	?	?	?	?	

Key: Entero=enterococci; TN=Total Nitrogen; NO3+NO2=Nitrate+Nitrite Nitrogen, TP=Total Phosphorus; Turb=Turbidity; chl-a=chlorophyll a; NH4=Ammonium Nitrogen; **BOLD A**=Delisted pollutant (data shows attainment of the state water quality standard).

A total of 39 previously listed waterbodies had one or more pollutants delisted, for a total of 49 delisted pollutants. Assessment results for 22 waterbodies showed that state standards were attained for enterococci.

A total of seven new waterbodies were listed with at least one category "5", and a total of 30 previously listed waterbodies had one or more pollutants added to category "5", for a total of 76 newly listed pollutants. Table 3 lists the newly listed waterbodies. Assessments for the five newly listed waterbodies on Oahu showed that state standards were not met for NO₃+NO₂, chl-a, and/or NH₄. However, all five Oahu waterbodies attained state standards for enterococci (using enterococci indicator bacteria), TN, and TP. Assessments for the two newly listed waterbodies on Lanai showed that state standards were not met for TN, but do meet all other nutrient standards.

TABLE 3. Newly Impaired Marine Waters

Island	Scope of Assessment	Geocode	Entero	TN	NO ₃ +NO ₂	TP	Turb	other
Oahu	Ala Moana Beach (Diamond Hd)	HIW00002	A	A	A	A	?	chl-a(N), NH₄(N)
Oahu	Pokai Bay	HIW00007	A	A	N	A	?	chl-a(N), NH₄(N)
Oahu	Royal-Moana Beach	HI898947	A	A	N	A	?	chl-a(N), NH₄(N)
Oahu	Sans Souci	HI617815	A	A	N	A	?	chl-a(A), NH₄(N)
Oahu	Sunset Beach	HI860544	A	A	N	A	?	chl-a(N), NH₄(N)
Lanai	Hulupoe Bay	HIW00177	?	N	A	A	A	chl-a(A), NH ₄ (A)
Lanai	Manele Bay Beach	HIW00178	?	N	A	A	A	chl-a(A), NH ₄ (A)

Key: Entero=enterococci; TN=Total Nitrogen; NO₃+NO₂=Nitrate+Nitrite Nitrogen, TP=Total Phosphorus; Turb=Turbidity; chl-a=chlorophyll a; NH₄=Ammonium Nitrogen; **BOLD A**=Newly Delisted pollutant (data shows attainment of the state water quality standard); **BOLD N**=Newly Listed pollutant (data shows non-attainment of the state water quality standard).

Two tables are provided to display changes that have occurred since the previous listing period, Table 4 and the 2008/2010 Waterbody Assessment Decisions Table (Chapter 3). Table 4 is provided to aid the reader in tracking any changes from the 2006 Integrated Report for marine/estuary waters to the 2008/2010 cycle. The first column of Table 4 is entitled Assessment Location, and contains the specific name of the area that the assessment applied to. The second column, Assmt ID, contains the geocode for the waterbody. Column 3 contains the pollutant where a change has occurred. Column 4 lists the action taken to categorize the waterbody as a result of assessed data. Column 5 describes the justification for each action taken. Column 6 lists the action taken, and a description of the reasons for the change.

Assessment results for each waterbody were categorized according to EPA methods, and placed in the 2008/2010 Waterbody Assessment Table in Chapter 3, for both marine and inland waters. Inland waters are discussed in Chapter 2. The following narrative only applies to the marine section of the Waterbody Assessment Table. The first column contains the waterbody type, as distinguished by HAR 11-54. The second column, Scope of Listing, is the name of the specific area that the assessment applies to. The next column contains the Geocode ID, which is the alphanumeric identifier attached to each listing. Columns 5 through 9 contain common

pollutants found in Hawaii's waters, and Column 10 lists other less frequently found pollutants. The eleventh column contains the assessment categories that apply to each waterbody. As described earlier, the multi-category assessment allows for a better description of each waterbody. The last column states the TMDL priority and indicates which TMDLs are currently under development or completed.

If the calculated level of a pollutant was found to be above the state standard, the parameter was entered in columns five through ten as "Not Attaining" (N). If the calculated value was below the stated value, the parameter was entered as "Attaining" (A). It is important to note that the marine waterbodies entered in the table are not reflective of all marine areas of the state. Rather, they indicate areas where sampling has taken place, and areas of higher incidence of human contact. Areas not shown in the table do not have any sampling data available, and are considered to be in category "3". Ensuing cycles may add waters as necessary. Parameters where no data were available were coded with a "?".

The Waterbody Assessment Decisions Table in Chapter 3 contains a number of waterbodies that are similar in name to other waterbodies (indicated by an asterisk *); these are not duplicates. These waterbody entries are from previous 303(d) listing cycles and were listed at that time as separate entries from similar sampling stations.

TABLE 4. Category List of Changes to 2006 Listed Coastal Waters (excludes newly listed waters)

- A multi-category listing method was employed for 2008/2010 to better characterize water quality conditions. Therefore, a Category “2” is assigned to all water bodies that have shown attainments for one or more pollutants and a Category “3” has been assigned to all water bodies for one or more pollutants that have inadequate data available for assessing attainment status.
- The Pollutants column is populated with pollutants on which a *change* has occurred (e.g. new listing, delisting, etc.).
- Pollutants: entero=enterococci; TN=Total Nitrogen, NO3+NO2=Nitrate+Nitrite nitrogen, TP=Total Phosphorus, Turb=Turbidity, chl-a=chlorophyll a; PO4=Phosphate.
- For the purposes of this report, listed water bodies are sorted by island, north to south.
- Summary Rationale Codes: NND=New Numerical Data; NL=New Listed Impairment (category 5); DL=Delisting (category 5 to 2); A2=Assigning of category 2; CGS=Clarified Geographical Scope; TC=Textual Change.

KAUAI					
Assesment Location	Assmt ID	Pollutant	Decision Action	Summary Rationale	Reason for Changes of Category
Hanalei Bay (Pavilion)	HIW00092	entero	Delist Pollutant	NND, DL	DELIST: cat. 2; The assessment of data documents indicate that applicable WQS are now being attained for entero, resulting in a category change from 5 to 2.
Kapa'a Beach Co. Park	HI972832	entero	Delist Pollutant	NND, DL	DELIST: cat. 2; The assessment of data documents indicate that applicable WQS are now being attained for entero, resulting in a category change from 5 to 2.
Nawiliwili Bay (Kalapaki Beach)	HIW00114	Total N		NND, A2	Assign cat. 2; The assessment of new data documents indicate that applicable WQS are being attained.
		NO3+NO2	List Pollutant	NND, NL	ASSIGN cat. 5; The assessment of new data documents indicate that applicable WQS are not being attained.
		Total P		NND, A2	Assign cat. 2; The assessment of new data documents indicate that applicable WQS are being attained.
		chl-a		NND, A2	Assign cat. 2; The assessment of new data documents indicate that applicable WQS are being attained.
		NH4		NND, A2	Assign cat. 2; The assessment of new data documents indicate that applicable WQS are being attained.

KAUAI					
Assesment Location	Assmt ID	Pollutant	Decision Action	Summary Rationale	Reason for Changes of Category
Nawiliwili Bay (Nawiliwili Harbor)	HIW00115	Total N		NND, A2	Assign cat. 2; The assessment of new data documents indicate that applicable WQS are being attained.
		NO3+NO2	List Pollutant	NND, NL	ASSIGN cat. 5; The assessment of new data documents indicate that applicable WQS are not being attained.
		Total P		NND, A2	Assign cat. 2; The assessment of new data documents indicate that applicable WQS are being attained.
		chl-a		NND, A2	Assign cat. 2; The assessment of new data documents indicate that applicable WQS are being attained.
		NH4	List Pollutant	NND, NL	ASSIGN cat. 5; The assessment of new data documents indicate that applicable WQS are not being attained.
Po'ipu Beach Co. Park	HI396850	entero	Delist Pollutant	NND, DL	DELIST: cat. 2; The assessment of data documents indicate that applicable WQS are now being attained for entero, resulting in a category change from 5 to 2.
Port Allen Boat Harbor (Port Allen Pier)	HIW00026	Total N	Delist Pollutant	NND, DL	DELIST: cat. 2; The assessment of data documents indicate that applicable WQS are now being attained for total nitrogen, resulting in a category change from 5 to 2.
		NO3+NO2	List Pollutant	NND, NL	ASSIGN cat. 5; The assessment of new data documents indicate that applicable WQS are not being attained.
		Total P		NND, A2	Assign cat. 2; The assessment of new data documents indicate that applicable WQS are being attained.
		chl-a	Delist Pollutant	NND, DL	DELIST: cat. 2; The assessment of data documents indicate that applicable WQS are now being attained for chl-a, resulting in a category change from 5 to 2.
		NH4	List Pollutant	NND, NL	ASSIGN cat. 5; The assessment of new data documents indicate that applicable WQS are not being attained.

KAUAI					
Assesment Location	Assmt ID	Pollutant	Decision Action	Summary Rationale	Reason for Changes of Category
Salt Pond Beach Co. Park	HI701008	entero	Delist Pollutant	NND, DL	DELIST: cat. 2; The assessment of data documents indicate that applicable WQS are now being attained for entero, resulting in a category change from 5 to 2.
		Total N		NND, A2	Assign cat. 2; The assessment of new data documents indicate that applicable WQS are being attained.
		NO3+NO2	List Pollutant	NND, NL	ASSIGN cat. 5; The assessment of new data documents indicate that applicable WQS are not being attained.
		Total P		NND, A2	Assign cat. 2; The assessment of new data documents indicate that applicable WQS are being attained.
		chl-a	List Pollutant	NND, NL	ASSIGN cat. 5; The assessment of new data documents indicate that applicable WQS are not being attained.
		NH4	List Pollutant	NND, NL	ASSIGN cat. 5; The assessment of new data documents indicate that applicable WQS are not being attained.

OAHU					
Assesment Location	Assmt ID	Pollutant	Decision Action	Summary Rationale	Reason for Changes of Category
Ala Moana Beach (Center)	HIW00001	Total N	Delist Pollutant	NND, DL	DELIST: cat. 2; The assessment of data documents indicate that applicable WQS are now being attained for total nitrogen, resulting in a category change from 5 to 2.
		NO3+NO2		NND, A2	Assign cat. 2; The assessment of new data documents indicate that applicable WQS are being attained.
		Total P		NND, A2	Assign cat. 2; The assessment of new data documents indicate that applicable WQS are being attained.
		NH4		NND, A2	Assign cat. 2; The assessment of new data documents indicate that applicable WQS are being attained.
Ala Moana Beach (Diamond Hd)	HIW00002	Total N		NND, A2	Assign cat. 2; The assessment of new data documents indicate that applicable WQS are being attained.
		NO3+NO2		NND, A2	Assign cat. 2; The assessment of new data documents indicate that applicable WQS are being attained.
		Total P		NND, A2	Assign cat. 2; The assessment of new data documents indicate that applicable WQS are being attained.
		chl-a	List Pollutant	NND, NL	ASSIGN cat. 5; The assessment of new data documents indicate that applicable WQS are not being attained.
		NH4	List Pollutant	NND, NL	ASSIGN cat. 5; The assessment of new data documents indicate that applicable WQS are not being attained.
Ewa Beach Park	HI319095	Total N	Delist Pollutant	NND, DL	DELIST: cat. 2; The assessment of data documents indicate that applicable WQS are now being attained for total nitrogen, resulting in a category change from 5 to 2.
		NO3+NO2		NND, A2	Assign cat. 2; The assessment of new data documents indicate that applicable WQS are being attained.

OAHU					
Assesment Location	Assmt ID	Pollutant	Decision Action	Summary Rationale	Reason for Changes of Category
		Total P	Delist Pollutant	NND, DL	DELIST: cat. 2; The assessment of data documents indicate that applicable WQS are now being attained for total phosphorus, resulting in a category change from 5 to 2.
		NH4	List Pollutant	NND, NL	ASSIGN cat. 5; The assessment of new data documents indicate that applicable WQS are not being attained.
Haleiwa Ali'i	HI451176	entero		NND, A2	Assign cat. 2; The assessment of new data documents indicate that applicable WQS are being attained.
Haleiwa Beach Park	HI994019	entero	Delist Pollutant	NND, DL	DELIST: cat. 2; The assessment of data documents indicate that applicable WQS are now being attained for entero, resulting in a category change from 5 to 2.
Hanauma Bay (Beach)	HIW00096	entero	Delist Pollutant	NND, DL	DELIST: cat. 2; The assessment of data documents indicate that applicable WQS are now being attained for entero, resulting in a category change from 5 to 2.
		Total N	Delist Pollutant	NND, DL	DELIST: cat. 2; The assessment of data documents indicate that applicable WQS are now being attained for total nitrogen, resulting in a category change from 5 to 2.
		NO3+NO2	List Pollutant	NND, NL	ASSIGN cat. 5; The assessment of new data documents indicate that applicable WQS are not being attained.
		Total P		NND, A2	Assign cat. 2; The assessment of new data documents indicate that applicable WQS are being attained.
		chl-a	Delist Pollutant	NND, DL	DELIST: cat. 2; The assessment of data documents indicate that applicable WQS are now being attained for chl-a, resulting in a category change from 5 to 2.
		NH4	List Pollutant	NND, NL	ASSIGN cat. 5; The assessment of new data documents indicate that applicable WQS are not being attained.

OAHU					
Assesment Location	Assmt ID	Pollutant	Decision Action	Summary Rationale	Reason for Changes of Category
Hawaii Kai station	HIW00117	entero	Delist Pollutant	NND, DL	DELIST: cat. 2; The assessment of data documents indicate that applicable WQS are now being attained for entero, resulting in a category change from 5 to 2.
Hawaiian Electric Beach Park	HI628972	entero	Delist Pollutant	NND, DL	DELIST: cat. 2; The assessment of data documents indicate that applicable WQS are now being attained for entero, resulting in a category change from 5 to 2.
Heeia Kea Small Boat Harbor	HIW00097	entero	Delist Pollutant	NND, DL	DELIST: cat. 2; The assessment of data documents indicate that applicable WQS are now being attained for entero, resulting in a category change from 5 to 2.
Ihilani Kohola Lagoon	HI515191	entero		NND, A2	Assign cat. 2; The assessment of new data documents indicate that applicable WQS are being attained.
Kaaawa Beach Park	HI580360	entero	Delist Pollutant	NND, DL	DELIST: cat. 2; The assessment of data documents indicate that applicable WQS are now being attained for entero, resulting in a category change from 5 to 2.
Kahala Beach Shoreline	HI514582	entero		NND, A2	Assign cat. 2; The assessment of new data documents indicate that applicable WQS are being attained.
Kahala Hilton Beach	HI173325	entero		NND, A2	Assign cat. 2; The assessment of new data documents indicate that applicable WQS are being attained.
Kahanamoku Beach	HI366432	entero	Delist Pollutant	NND, DL	DELIST: cat. 2; The assessment of data documents indicate that applicable WQS are now being attained for entero, resulting in a category change from 5 to 2.
		Total N		NND, A2	Assign cat. 2; The assessment of new data documents indicate that applicable WQS are being attained.
		NO3+NO2		NND, A2	Assign cat. 2; The assessment of new data documents indicate that applicable WQS are being attained.

OAHU					
Assement Location	Assmt ID	Pollutant	Decision Action	Summary Rationale	Reason for Changes of Category
		Total P		NND, A2	Assign cat. 2; The assessment of new data documents indicate that applicable WQS are being attained.
		NH4		NND, A2	Assign cat. 2; The assessment of new data documents indicate that applicable WQS are being attained.
		chl-a	List Pollutant	NND, NL	ASSIGN cat. 5; The assessment of new data documents indicate that applicable WQS are not being attained.
Kailua Beach Park	HI482719	Total N	Delist Pollutant	NND, DL	DELIST: cat. 2; The assessment of data documents indicate that applicable WQS are now being attained for total nitrogen, resulting in a category change from 5 to 2.
		Total P	Delist Pollutant	NND, DL	DELIST: cat. 2; The assessment of data documents indicate that applicable WQS are now being attained for total phosphorus, resulting in a category change from 5 to 2.
		NO3+NO2		NND, A2	Assign cat. 2; The assessment of new data documents indicate that applicable WQS are being attained.
		NH4	List Pollutant	NND, NL	ASSIGN cat. 5; The assessment of new data documents indicate that applicable WQS are not being attained.
Kaiona Beach	HI234342	entero	Delist Pollutant	NND, DL	DELIST: cat. 2; The assessment of data documents indicate that applicable WQS are now being attained for entero, resulting in a category change from 5 to 2.
Kakaako Waterfront	HI302297	entero		NND, A2	Assign cat. 2; The assessment of new data documents indicate that applicable WQS are being attained.
Kananelu Beach	HI196120	entero		NND, A2	Assign cat. 2; The assessment of new data documents indicate that applicable WQS are being attained.
Kaupo Beach Co. Park	HI791127	entero		NND, A2	Assign cat. 2; The assessment of new data documents indicate that applicable WQS are being attained.

OAHU					
Assement Location	Assmt ID	Pollutant	Decision Action	Summary Rationale	Reason for Changes of Category
Kawaiku'i Beach Park	HI304424	entero	Delist Pollutant	NND, DL	DELIST: cat. 2; The assessment of data documents indicate that applicable WQS are now being attained for entero, resulting in a category change from 5 to 2.
Kawela Bay	HI698581	entero	Delist Pollutant	NND, DL	DELIST: cat. 2; The assessment of data documents indicate that applicable WQS are now being attained for entero, resulting in a category change from 5 to 2.
Kokololio Beach	HI467112	entero		NND, A2	Assign cat. 2; The assessment of new data documents indicate that applicable WQS are being attained.
Kualoa Co. Regional Park	HI848207	entero	Delist Pollutant	NND, DL	DELIST: cat. 2; The assessment of data documents indicate that applicable WQS are now being attained for entero, resulting in a category change from 5 to 2.
		Total N	List Pollutant	NND, NL	ASSIGN cat. 5; The assessment of new data documents indicate that applicable WQS are not being attained.
		NO3+NO2	List Pollutant	NND, NL	ASSIGN cat. 5; The assessment of new data documents indicate that applicable WQS are not being attained.
		Total P		NND, A2	Assign cat. 2; The assessment of new data documents indicate that applicable WQS are being attained.
		chl-a	List Pollutant	NND, NL	ASSIGN cat. 5; The assessment of new data documents indicate that applicable WQS are not being attained.
		NH4	List Pollutant	NND, NL	ASSIGN cat. 5; The assessment of new data documents indicate that applicable WQS are not being attained.
Kuhio Beach	HI681782	Total N		NND, A2	Assign cat. 2; The assessment of new data documents indicate that applicable WQS are being attained.
		NO3+NO2	List Pollutant	NND, NL	ASSIGN cat. 5; The assessment of new data documents indicate that applicable WQS are not being attained.

OAHU					
Assesment Location	Assmt ID	Pollutant	Decision Action	Summary Rationale	Reason for Changes of Category
		Total P		NND, A2	Assign cat. 2; The assessment of new data documents indicate that applicable WQS are being attained.
		chl-a		NND, A2	Assign cat. 2; The assessment of new data documents indicate that applicable WQS are being attained.
		NH4	List Pollutant	NND, NL	ASSIGN cat. 5; The assessment of new data documents indicate that applicable WQS are not being attained.
Kuhio Beach (Public Bath)	HI851298	Total N	Delist Pollutant	NND, DL	DELIST: cat. 2; The assessment of data documents indicate that applicable WQS are now being attained for total nitrogen, resulting in a category change from 5 to 2.
		NO3+NO2		NND, A2	Assign cat. 2; The assessment of new data documents indicate that applicable WQS are being attained.
		Total P		NND, A2	Assign cat. 2; The assessment of new data documents indicate that applicable WQS are being attained.
		NH4		NND, A2	Assign cat. 2; The assessment of new data documents indicate that applicable WQS are being attained.
Kuilima Cove	HI412224	entero		NND, A2	Assign cat. 2; The assessment of new data documents indicate that applicable WQS are being attained.
Laniakea Beach	HI183312	entero		NND, A2	Assign cat. 2; The assessment of new data documents indicate that applicable WQS are being attained.
Maipalaoa Beach	HI280966	entero		NND, A2	Assign cat. 2; The assessment of new data documents indicate that applicable WQS are being attained.
Makaha Beach	HI632106	Total N	Delist Pollutant	NND, DL	DELIST: cat. 2; The assessment of data documents indicate that applicable WQS are now being attained for total nitrogen, resulting in a category change from 5 to 2.

OAHU					
Assessment Location	Assmt ID	Pollutant	Decision Action	Summary Rationale	Reason for Changes of Category
		NO3+NO2	List Pollutant	NND, NL	ASSIGN cat. 5; The assessment of new data documents indicate that applicable WQS are not being attained.
		Total P		NND, A2	Assign cat. 2; The assessment of new data documents indicate that applicable WQS are being attained.
		NH4	List Pollutant	NND, NL	ASSIGN cat. 5; The assessment of new data documents indicate that applicable WQS are not being attained.
Mamala Bay (Sand Isl. Offshore)	HIW00014	entero	Delist Pollutant	NND, DL	DELIST: cat. 2; The assessment of data documents indicate that applicable WQS are now being attained for total nitrogen, resulting in a category change from 5 to 2.
		Total N	Delist Pollutant	NND, DL	DELIST: cat. 2; The assessment of data documents indicate that applicable WQS are now being attained for total nitrogen, resulting in a category change from 5 to 2.
		NO3+NO2		NND, A2	Assign cat. 2; The assessment of new data documents indicate that applicable WQS are being attained.
		Total P		NND, A2	Assign cat. 2; The assessment of new data documents indicate that applicable WQS are being attained.
		Turb		NND, A2	Assign cat. 2; The assessment of new data documents indicate that applicable WQS are being attained.
		chl-a	Delist Pollutant	NND, DL	DELIST: cat. 2; The assessment of data documents indicate that applicable WQS are now being attained for chl-a, resulting in a category change from 5 to 2.
		NH4		NND, A2	Assign cat. 2; The assessment of new data documents indicate that applicable WQS are being attained.
Mauna Lahilahi Beach	HI639551	entero		NND, A2	Assign cat. 2; The assessment of new data documents indicate that applicable WQS are being attained.

OAHU					
Assesment Location	Assmt ID	Pollutant	Decision Action	Summary Rationale	Reason for Changes of Category
Oneawa Beach	HI952205	entero	List Pollutant	NND, NL	ASSIGN cat. 5; The assessment of new data documents indicate that applicable WQS are not being attained.
Point Panic	HI197311	entero		NND, A2	Assign cat. 2; The assessment of new data documents indicate that applicable WQS are being attained.
Pokai Bay	HIW00007	Total N		NND, A2	Assign cat. 2; The assessment of new data documents indicate that applicable WQS are being attained.
		NO3+NO2	List Pollutant	NND, NL	ASSIGN cat. 5; The assessment of new data documents indicate that applicable WQS are not being attained.
		Total P		NND, A2	Assign cat. 2; The assessment of new data documents indicate that applicable WQS are being attained.
		chl-a	List Pollutant	NND, NL	ASSIGN cat. 5; The assessment of new data documents indicate that applicable WQS are not being attained.
		NH4	List Pollutant	NND, NL	ASSIGN cat. 5; The assessment of new data documents indicate that applicable WQS are not being attained.
Royal-Moana Beach	HI898947	Total N		NND, A2	Assign cat. 2; The assessment of new data documents indicate that applicable WQS are being attained.
		NO3+NO2	List Pollutant	NND, NL	ASSIGN cat. 5; The assessment of new data documents indicate that applicable WQS are not being attained.
		Total P		NND, A2	Assign cat. 2; The assessment of new data documents indicate that applicable WQS are being attained.
		chl-a	List Pollutant	NND, NL	ASSIGN cat. 5; The assessment of new data documents indicate that applicable WQS are not being attained.
		NH4	List Pollutant	NND, NL	ASSIGN cat. 5; The assessment of new data documents indicate that applicable WQS are not being attained.

OAHU					
Assement Location	Assmt ID	Pollutant	Decision Action	Summary Rationale	Reason for Changes of Category
Sandy Beach	HI776760	NO3+NO2	List Pollutant	NND, NL	ASSIGN cat. 5; The assessment of new data documents indicate that applicable WQS are not being attained.
		Total P		NND, A2	Assign cat. 2; The assessment of new data documents indicate that applicable WQS are being attained.
		NH4	List Pollutant	NND, NL	ASSIGN cat. 5; The assessment of new data documents indicate that applicable WQS are not being attained.
Sans Souci	HI617815	Total N		NND, A2	Assign cat. 2; The assessment of new data documents indicate that applicable WQS are being attained.
		NO3+NO2	List Pollutant	NND, NL	ASSIGN cat. 5; The assessment of new data documents indicate that applicable WQS are not being attained.
		Total P		NND, A2	Assign cat. 2; The assessment of new data documents indicate that applicable WQS are being attained.
		chl-a		NND, A2	Assign cat. 2; The assessment of new data documents indicate that applicable WQS are being attained.
Sunset Beach	HI860544	NH4	List Pollutant	NND, NL	ASSIGN cat. 5; The assessment of new data documents indicate that applicable WQS are not being attained.
		Total N		NND, A2	Assign cat. 2; The assessment of new data documents indicate that applicable WQS are being attained.
		NO3+NO2	List Pollutant	NND, NL	ASSIGN cat. 5; The assessment of new data documents indicate that applicable WQS are not being attained.
		Total P		NND, A2	Assign cat. 2; The assessment of new data documents indicate that applicable WQS are being attained.
		chl-a	List Pollutant	NND, NL	ASSIGN cat. 5; The assessment of new data documents indicate that applicable WQS are not being attained.

OAHU					
Assement Location	Assmt ID	Pollutant	Decision Action	Summary Rationale	Reason for Changes of Category
		NH4	List Pollutant	NND, NL	ASSIGN cat. 5; The assessment of new data documents indicate that applicable WQS are not being attained.
Tongg's	HI248913	entero		NND, A2	Assign cat. 2; The assessment of new data documents indicate that applicable WQS are being attained.
Ulehawa Beach	HI784010	entero		NND, A2	Assign cat. 2; The assessment of new data documents indicate that applicable WQS are being attained.
Wai'alaie Beach Co. Park	HI997368	entero	Delist Pollutant	NND, DL	DELIST: cat. 2; The assessment of data documents indicate that applicable WQS are now being attained for entero, resulting in a category change from 5 to 2.
Waimanalo Beach Co. Park (South)	HIW00174	entero	Delist Pollutant	NND, DL	DELIST: cat. 2; The assessment of data documents indicate that applicable WQS are now being attained for entero, resulting in a category change from 5 to 2.
		Total N	List Pollutant	NND, NL	ASSIGN cat. 5; The assessment of new data documents indicate that applicable WQS are not being attained.
		NO3+NO2	List Pollutant	NND, NL	ASSIGN cat. 5; The assessment of new data documents indicate that applicable WQS are not being attained.
		Total P		NND, A2	Assign cat. 2; The assessment of new data documents indicate that applicable WQS are being attained.
		chl-a	List Pollutant	NND, NL	ASSIGN cat. 5; The assessment of new data documents indicate that applicable WQS are not being attained.
		NH4	List Pollutant	NND, NL	ASSIGN cat. 5; The assessment of new data documents indicate that applicable WQS are not being attained.
Waimea Bay	HIW00128	entero	Delist Pollutant	NND, DL	DELIST: cat. 2; The assessment of data documents indicate that applicable WQS are now being attained for entero, resulting in a category change from 5 to 2.

OAHU					
Assesment Location	Assmt ID	Pollutant	Decision Action	Summary Rationale	Reason for Changes of Category
Wawamalu Beach Park	HI329454	entero		NND, A2	Assign cat. 2; The assessment of new data documents indicate that applicable WQS are being attained.

LANAI					
Assesment Location	Assmt ID	Pollutant	Decision Action	Summary Rationale	Reason for Changes of Category
Awehi	HIW00134	Total N	List Pollutant	NND, NL	ASSIGN cat. 5; The assessment of new data documents indicate that applicable WQS are not being attained.
		chl-a	List Pollutant	NND, NL	ASSIGN cat. 5; The assessment of new data documents indicate that applicable WQS are not being attained.
		NH4	Delist Pollutant	NND, DL	DELIST: cat. 2; The assessment of data documents indicate that applicable WQS are now being attained for NH4, resulting in a category change from 5 to 2.
Hulupoe Bay	HIW00177	Waterbody Type	Correction	TC	Correction of mislabeled waterbody type from Bay to Coastal
		Total N	List Pollutant	NND, NL	ASSIGN cat. 5; The assessment of new data documents indicate that applicable WQS are not being attained.
Kaluakoi Point to Huawai Bay	HIW00135	Total N	List Pollutant	NND, NL	ASSIGN cat. 5; The assessment of new data documents indicate that applicable WQS are not being attained.
		NH4	Delist Pollutant	NND, DL	DELIST: cat. 2; The assessment of data documents indicate that applicable WQS are now being attained for NH4, resulting in a category change from 5 to 2.
Kawaiu Gulch-Makole Pt.	HIW00133	Total N	List Pollutant	NND, NL	ASSIGN cat. 5; The assessment of new data documents indicate that applicable WQS are not being attained.
		chl-a	List Pollutant	NND, NL	ASSIGN cat. 5; The assessment of new data documents indicate that applicable WQS are not being attained.
		NH4	Delist Pollutant	NND, DL	DELIST: cat. 2; The assessment of data documents indicate that applicable WQS are now being attained for NH4, resulting in a category change from 5 to 2.
Mahanalua	HIW00136	Total N	List Pollutant	NND, NL	ASSIGN cat. 5; The assessment of new data documents indicate that applicable WQS are not being attained.

LANAI					
Assesment Location	Assmt ID	Pollutant	Decision Action	Summary Rationale	Reason for Changes of Category
		chl-a	List Pollutant	NND, NL	ASSIGN cat. 5; The assessment of new data documents indicate that applicable WQS are not being attained.
		NH4	Delist Pollutant	NND, DL	DELIST: cat. 2; The assessment of data documents indicate that applicable WQS are now being attained for NH4, resulting in a category change from 5 to 2.
Manele Bay Beach	HIW00178	Waterbody Type	Correction	TC	Correction of mislabeled waterbody type from Bay to Coastal
		Total N	List Pollutant	NND, NL	ASSIGN cat. 5; The assessment of new data documents indicate that applicable WQS are not being attained.
Manele Boat Harbor	HIW00179	NO3+NO2	Delist Pollutant	NND, DL	DELIST: cat. 2; The assessment of data documents indicate that applicable WQS are now being attained for NO3+NO2, resulting in a category change from 5 to 2.
		NH4	Delist Pollutant	NND, DL	DELIST: cat. 2; The assessment of data documents indicate that applicable WQS are now being attained for NH4, resulting in a category change from 5 to 2.

MAUI					
Assesment Location	Assmt ID	Pollutant	Decision Action	Summary Rationale	Reason for Changes of Category
H.A. Baldwin Beach Co. Pk.	HI846900	entero		NND, A2	Assign cat. 2; The assessment of new data documents indicate that applicable WQS are being attained.
Kahului Harbor	HIW00104	entero	Delist Pollutant	NND, DL	DELIST: cat. 2; The assessment of data documents indicate that applicable WQS are now being attained for entero, resulting in a category change from 5 to 2.
Kalama Beach Co. Park (Beach)	HIW00023	entero		NND, A2	Assign cat. 2; The assessment of new data documents indicate that applicable WQS are being attained.
Kalepolepo (Waimahaihai)	HIW00141	entero	Delist Pollutant	NND, DL	DELIST: cat. 2; The assessment of data documents indicate that applicable WQS are now being attained for entero, resulting in a category change from 5 to 2.
		Total N	List Pollutant	NND, NL	ASSIGN cat. 5; The assessment of new data documents indicate that applicable WQS are not being attained.
		NO3+NO2	List Pollutant	NND, NL	ASSIGN cat. 5; The assessment of new data documents indicate that applicable WQS are not being attained.
		NH4	List Pollutant	NND, NL	ASSIGN cat. 5; The assessment of new data documents indicate that applicable WQS are not being attained.
Kamaole Beach 3	HI496115	entero		NND, A2	Assign cat. 2; The assessment of new data documents indicate that applicable WQS are being attained.
Kapalua (Fleming's) Beach	HI391006	entero		NND, A2	Assign cat. 2; The assessment of new data documents indicate that applicable WQS are being attained.
		Total N	List Pollutant	NND, NL	ASSIGN cat. 5; The assessment of new data documents indicate that applicable WQS are not being attained.
		NO3+NO2	List Pollutant	NND, NL	ASSIGN cat. 5; The assessment of new data documents indicate that applicable WQS are not being attained.

MAUI					
Assesment Location	Assmt ID	Pollutant	Decision Action	Summary Rationale	Reason for Changes of Category
		Total P		NND, A2	Assign cat. 2; The assessment of new data documents indicate that applicable WQS are being attained.
		NH4	List Pollutant	NND, NL	ASSIGN cat. 5; The assessment of new data documents indicate that applicable WQS are not being attained.
Launiupoko St. Wayside Park	HI558359	entero	Delist Pollutant	NND, DL	DELIST: cat. 2; The assessment of data documents indicate that applicable WQS are now being attained for entero, resulting in a category change from 5 to 2.
Mai Poina Oe Iau Beach Co. Pk.	HIW00025	entero		NND, A2	Assign cat. 2; The assessment of new data documents indicate that applicable WQS are being attained.
Makena Landing-Maluaka Beach	HIW00142	Total P	Delist Pollutant	NND, DL	DELIST: cat. 2; The assessment of data documents indicate that applicable WQS are now being attained for total phosphorus, resulting in a category change from 5 to 2.
		Turb	Delist Pollutant	NND, DL	DELIST: cat. 2; The assessment of data documents indicate that applicable WQS are now being attained for turbidity, resulting in a category change from 5 to 2.
Oneloa Beach (Big Beach)-Ahihi-Kinau	HIW00144	Total P	Delist Pollutant	NND, DL	DELIST: cat. 2; The assessment of data documents indicate that applicable WQS are now being attained for total phosphorus, resulting in a category change from 5 to 2.
		Turb	Delist Pollutant	NND, DL	DELIST: cat. 2; The assessment of data documents indicate that applicable WQS are now being attained for turbidity, resulting in a category change from 5 to 2.
Oneuli Beach	HI756040	Turb	Delist Pollutant	NND, DL	DELIST: cat. 2; The assessment of data documents indicate that applicable WQS are now being attained for turbidity, resulting in a category change from 5 to 2.
Poolenalena-Makena Landing	HIW00143	Turb	Delist Pollutant	NND, DL	DELIST: cat. 2; The assessment of data documents indicate that applicable WQS are now being attained for turbidity, resulting in a category change from 5 to 2.

HAWAII

Assesment Location	Assmt ID	Pollutant	Decision Action	Summary Rationale	Reason for Changes of Category
Hapuna Beach St. Rec. Area	HI621002	Total N	List Pollutant	NND, NL	ASSIGN cat. 5; The assessment of new data documents indicate that applicable WQS are not being attained.
		NO3+NO2	List Pollutant	NND, NL	ASSIGN cat. 5; The assessment of new data documents indicate that applicable WQS are not being attained.
		Total P	List Pollutant	NND, NL	ASSIGN cat. 5; The assessment of new data documents indicate that applicable WQS are not being attained.
		NH4	List Pollutant	NND, NL	ASSIGN cat. 5; The assessment of new data documents indicate that applicable WQS are not being attained.
Hilo Bay (Exit of Ice Pond)	HI659453	Total N	List Pollutant	NND, NL	ASSIGN cat. 5; The assessment of new data documents indicate that applicable WQS are not being attained.
		NO3+NO2	List Pollutant	NND, NL	ASSIGN cat. 5; The assessment of new data documents indicate that applicable WQS are not being attained.
		chl-a		NND, A2	Assign cat. 2; The assessment of new data documents indicate that applicable WQS are being attained.
		NH4		NND, A2	Assign cat. 2; The assessment of new data documents indicate that applicable WQS are being attained.
Hilo Bay (Lighthouse)	HIW00028	Total N		NND, A2	Assign cat. 2; The assessment of new data documents indicate that applicable WQS are being attained.
		NO3+NO2	List Pollutant	NND, NL	ASSIGN cat. 5; The assessment of new data documents indicate that applicable WQS are not being attained.
		Total P		NND, A2	Assign cat. 2; The assessment of new data documents indicate that applicable WQS are being attained.
		NH4	List Pollutant	NND, NL	ASSIGN cat. 5; The assessment of new data documents indicate that applicable WQS are not being attained.

HAWAII					
Assesment Location	Assmt ID	Pollutant	Decision Action	Summary Rationale	Reason for Changes of Category
Honokohau Beach	HI315174	Total P	List Pollutant	NND, NL	ASSIGN cat. 5; The assessment of new data documents indicate that applicable WQS are not being attained.
		Turb	List Pollutant	NND, NL	ASSIGN cat. 5; The assessment of new data documents indicate that applicable WQS are not being attained.
		NH4	List Pollutant	NND, NL	ASSIGN cat. 5; The assessment of new data documents indicate that applicable WQS are not being attained.
		PO4	List Pollutant	NND, NL	ASSIGN cat. 5; The assessment of new data documents indicate that applicable WQS are not being attained.
Kahawai Bay-Mano Pt.	HIW00153	Turb	List Pollutant	NND, NL	ASSIGN cat. 5; The assessment of new data documents indicate that applicable WQS are not being attained.
		PO4		NND, A2	Assign cat. 2; The assessment of new data documents indicate that applicable WQS are being attained.
Kauna'oa Beach	HI261869	entero		NND, A2	Assign cat. 2; The assessment of new data documents indicate that applicable WQS are being attained.
Keahou Bay (Kona)	HI713293	entero		NND, A2	Assign cat. 2; The assessment of new data documents indicate that applicable WQS are being attained.
Kealakekua Bay	HIW00149	PO4	List Pollutant	NND, NL	ASSIGN cat. 5; The assessment of new data documents indicate that applicable WQS are not being attained.
Kuki'o Bay	HIW00154	PO4	List Pollutant	NND, NL	ASSIGN cat. 5; The assessment of new data documents indicate that applicable WQS are not being attained.
Manini'owali	HI720408	PO4		NND, A2	Assign cat. 2; The assessment of new data documents indicate that applicable WQS are being attained.

HAWAII					
Assement Location	Assmt ID	Pollutant	Decision Action	Summary Rationale	Reason for Changes of Category
Paaao Point to Keawekaheka Point	HIW00145	Turb	Delist Pollutant	NND, DL	DELIST: cat. 2; The assessment of data documents indicate that applicable WQS are now being attained for turbidity, resulting in a category change from 5 to 2.
		PO4		NND, A2	Assign cat. 2; The assessment of new data documents indicate that applicable WQS are being attained.
Pine Trees	HI320616	PO4		NND, A2	Assign cat. 2; The assessment of new data documents indicate that applicable WQS are being attained.
Pine Trees-Honokohau	HIW00146	Turb	List Pollutant	NND, NL	ASSIGN cat. 5; The assessment of new data documents indicate that applicable WQS are not being attained.
		chl-a	Delist Pollutant	NND, DL	DELIST: cat. 2; The assessment of data documents indicate that applicable WQS are now being attained for chl-a, resulting in a category change from 5 to 2.
		PO4	List Pollutant	NND, NL	ASSIGN cat. 5; The assessment of new data documents indicate that applicable WQS are not being attained.
Waiulua Bay to Anaehoomalu Bay	HIW00148	chl-a	List Pollutant	NND, NL	ASSIGN cat. 5; The assessment of new data documents indicate that applicable WQS are not being attained.
		PO4	List Pollutant	NND, NL	ASSIGN cat. 5; The assessment of new data documents indicate that applicable WQS are not being attained.
Wawaloli Beach-Pine Trees	HIW00147	PO4	List Pollutant	NND, NL	ASSIGN cat. 5; The assessment of new data documents indicate that applicable WQS are not being attained.

LIST OF REFERENCES

Byappanahalli, M and R. Fujioka, 2004. Indigenous soil bacteria and low moisture may limit but allow fecal bacteria to multiply and become a minor population in topical soils. *Water Science and Technology*. vol. 50, 1:27-32.

EPA Office of Water, Office of Research and Development. 2007. *Report of the Experts Scientific Workshop on Critical Research Needs For the Development of New or Revised Recreational Water Quality Criteria*. EPA 823-R-07-006. (June 15, 2007).

EPA Monitoring and Assessing Water Quality (n.d.). Retrieved September 27, 2006, from <http://water.epa.gov/lawsregs/guidance/cwa/305b/index.cfm>

EPA - Watershed Branch. 2005. *Guidance for 2006 Assessment, Listing and Reporting Requirements Pursuant to Sections 303(d), 305(b) and 314 of the Clean Water Act (July 29, 2005)*.

EPA - Watershed Branch. 2009. *Information Concerning 2010 Clean Water Act Sections 303(d), 305(b) and 314 Integrated Reporting and Listing Decisions (May 5, 2009)*.

Gruber, S.J., Kay, L.M., Kolb, R., and Henry, K. 2005. Mission Bay bacterial source identification study-A Clean Beaches initiative grant helps track causes of contamination. *Stormwater*. vol.6, 3:40-51.

U.S. EPA. 1986. Ambient water quality criteria for bacteria - 1986. EPA 44015-84-002, Office of Water Regulations and Standards, U.S. Environmental Protection Agency, Washington, DC.

U.S. EPA. "Water Quality Standards for Coastal and Great Lakes Recreation Waters; Final Rule." *Federal Register* 69:220 (16 November 2004).